

2587
on 18



GOVERNMENT OF KERALA

District Statistical Handbook 1986

ERNAKULAM

DEPARTMENT OF ECONOMICS AND STATISTICS
TRIVANDRUM



GOVERNMENT OF KERALA

District
Statistical
Handbook
1986

ERNAKULAM

DEPARTMENT OF ECONOMIC AND STATISTICS
TRIVANDRUM

DISTRICT STATISTICAL

HAND BOOK

1986

ERNAKULAM

**DEPARTMENT OF ECONOMICS AND STATISTICS
TRIVANDRUM**

1944

1945

1946

1947

1948

1949

PREFACE

Government of Kerala have already decided to consider district and even development block as basic unit to plan and execute selected schemes. Since different departments are required to undertake detailed planning exercise, it is important that they have to be provided with adequate and timely data at district and block levels. The department has recently published 'Block Level Statistics' for all the 14 districts. 'District Statistical Hand Books' are intended to present almost all important data depicting the socio-economic conditions of the district.

The District Statistical Hand Book of Ernakulam was prepared by Sri C. Issac, Research Assistant under the guidance of Mr. V. K. Paran Unni former Deputy Director, District Office, Economics and Statistics, Ernakulam. I hope that this publication will be of considerable use to planners and researchers who are interested to study the problems of the district.

Suggestions for improvement are most welcome.

Trivandrum,
9-12-1986.

K. BALAKRISHNAN NAIR,
Director of Economics and Statistics.

CONTENTS

Page

Section 1—Human resources

1.1	Administrative development division—1986 ..	3
1.2	Growth of population—1901 to 1981 ..	3
1.3	Taluk-wise distribution of area, population, sex ratio and literacy—1971 and 1981 ..	4
1.4	Taluk-wise distribution of rural and urban population and density—1971 and 1981 ..	5
1.5	Area and population of municipalities and towns—1981 ..	6
1.6	Taluk-wise distribution of households and average size of family—1971 and 1981 ..	7
1.7	Taluk-wise distribution of Scheduled Caste and Scheduled Tribe population—1971 and 1981 ..	8
1.8	Population by religion—1971 and 1981 ..	9
1.9	Population by age group—1971 ..	10
1.10	Taluk-wise distribution of workers and non-workers—1981 ..	11
1.11	Taluk-wise distribution of main workers under various industrial categories—1981 ..	12
1.12	Sex—Classification of main workers under various industrial categories in taluks—1981 ..	13
1.13	Number of applicants on the live register of employment exchanges 1982-83 to 1984-85 ..	14
1.14	Registration and placements effected by employment exchanges—1970-71, 1980-81 and 1984-85 ..	14

Section 2—Agriculture

2.1	Normal and average annual rainfall ..	17
2.2	Monthly rainfall at rain recording stations ..	18
2.3	Distribution of area according to land utilisation ..	20
2.4	Distribution of operational holdings according to size of holding 1976-77 and 1980-81 ..	21
2.5	Area and yield of principal crops ..	22
2.6	Estimated mean yield of paddy—Dry rice ..	24
2.7	Area irrigated by sources ..	27
2.8	Agricultural implements and machinery ..	28
2.9	Livestock population—1977 and 1982 ..	29
2.10	Number of veterinary institutions, personnel and livestock treated ..	30
2.11	Livestock slaughtered in panchayats ..	31
2.12	Livestock slaughtered in municipalities and corporations ..	31
2.13	Taluk-wise distribution of fishermen households and fishermen population ..	32
2.14	Out-turn of major forest products ..	33

Section 3—Industries and banks

3.1	Number of non-agricultural enterprises and persons working in rural and urban areas—1980 ..	37
3.2	Industry-wise distribution of registered factories and employment ..	38
3.3	Industry-wise distribution of small scale industrial units ..	40
3.4	Details of handloom, coir and milk supply societies ..	41
3.5	Number of printing presses at work, newspapers and periodicals published ..	42
3.6	Details of scheduled commercial banks ..	43
3.7	Details of non-industrial co-operative societies ..	44

Section 4—Transport and Communication

4.1	Length of roads	..	49
4.2	Details of roads maintained by panchayats	..	50
4.3	Length of railways	..	50
4.4	Number of registered motor vehicles on road	..	50
4.5	Posts and telegraph offices	..	51
4.6	Number of accidents on road, persons killed and injured	..	51

Section 5—Education

5.1	Number of schools for general education	..	55
5.2	Number of schools for professional and special education	..	55
5.3	Number of students in general education	..	56
5.4	Number of students belonging to Scheduled Castes	..	56
5.5	Number of students belonging to Scheduled Tribes	..	57
5.6	Number of students belonging to Scheduled Castes and Scheduled Tribes for higher education	..	57
5.7	Number of teachers in general education	..	58
5.8	Number of teachers in teachers training course	..	58
5.9	Number of students for higher education	..	59
5.10	Number of teachers for higher education	..	59
5.11	Number of institutions for higher education by type of management	..	60

Section 6—Medical and health care

6.1	Medical institutions, beds and personnel	..	63
6.2	Patients treated in medical institutions	..	64
6.3	Family welfare programmes	..	65
6.4	Private sector medical facilities under various systems	..	66

Section 7—Prices and wages

7.1	Farm prices of important commodities (centre-wise)	..	69
7.2	Farm prices of important commodities (month-wise)	..	72
7.3	Wholesale prices of important commodities (centre-wise)	..	86
7.4	Wholesale prices of important commodities (month-wise)	..	87
7.5	Average daily employment in plantations	..	91
7.6	Consumer price indices for the working class	..	92
7.7	Average daily wage rates of paddy field labour	..	93
7.8	Average daily wage rates of skilled and unskilled labour in the construction sector	..	94
7.9	Average monthly wage rates of shop assistants in the trade and commerce sector	..	95

Section 8—Miscellaneous

8.1	District income at current prices	..	99
8.2	District income by broad sector at current prices	..	100
8.3	Small savings collection	..	101
8.4	Classification of persons assessed for agricultural income tax	..	102
8.5	Revenue from agricultural income tax	..	102
8.6	Sales tax assesses and registered dealers	..	102
8.7	Demand, collection, remission and balance under general sales tax	..	103
8.8	Revenue from general sales tax	..	103
8.9	Agricultural income tax and super tax demanded on different agricultural produce	..	103
8.10	Demand, collection and balance of land taxes	..	104

	Page
8.11 Number of sub registry offices ..	105
8.12 Number of documents registered ..	105
8.13 Taluk-wise details of trees tapped and tree tax collected ..	106
8.14 Taluk-wise number of liquor shops ..	107
8.15 Licence fee collected on foreign liquor ..	108
8.16 Taluk-wise details of rentals obtained in auction sale of abkari shops ..	109
8.17 Income and expenditure of panchayats ..	110
8.18 Income of municipalities ..	111
8.19 Expenditure of Municipalities ..	112
8.20 Number and seating capacity of cinema houses and talkies in panchayats ..	113
8.21 Offences reported and persons tried, convicted and acquitted for cases of offences ..	114
8.22 Police stations and outposts ..	115
8.23 Statement of serious crimes ..	115
8.24 Housing conditions—1980 ..	115
8.25 Area and population of panchayats in the district ..	116
8.26 Area and population of revenue villages in the districts ..	119

SECTION I
HUMAN RESOURCES

1.1 Administrative/development division 1986

<i>Sl. No.</i>	<i>Name of Taluk</i>	<i>Number of Revenue Villages</i>	<i>Name of Block</i>	<i>Number of Panchayats</i>
(1)	(2)	(3)	(4)	(5)
1	Kanayannur	25	Edappilly Mulanthuruthy Vytila	4 6 2
2	Cochin	15	Palluruthy Vypeen	2 7
3	Alwaye	18	Parakkadavu Angamali	5 9
4	Parur	13	Alangad Parur	4 5
5	Kunnathunad	23	Vadavucode Vazhakulam Koovappady	6 6 5
6	Muvattupuzha	18	Muvattupuzha Pampakuda	8 8
7	Kothamangalam	10	Kothamangalam	9
	Total	122		86

1.2 Growth of Population 1901 to 1981

<i>Year</i>	<i>Population</i>	<i>Decadal increase (percentage)</i>	<i>Density of population</i>	<i>Sex ratio</i>
(1)	(2)	(3)	(4)	(5)
1901	646,261	..	268	985
1911	735,297	13.78	305	990
1921	789,343	7.35	328	969
1931	982,769	24.50	408	994
1941	1,172,335	19.29	487	995
1951	1,393,730	18.88	579	1008
1961	1,698,575	21.87	705	999
1971	2,163,674	27.38	899	988
1981	2,535,294	17.18	1053	998

Source: Census reports.

1.3 Taluk-wise distribution of area, population, sex ratio and literacy—1971 and 1981

Serial number	Taluk	Area (sq. kms.)	Population				Density of population		Sex ratio		Literacy (percentage)	
			1971		1981		1971	1981	1971	1981	1971	1981
			Total	Male	Female	Total	Male	Female	1971	1981	1971	1981
1	2	3	4	5	6	7	8	9	10	11	12	13
1	Kanayannur	322.7	498884	607084	304428	302656	1546	1881	979	994	69.46	77.91
2	Cochin	140.9	396849	451059	225250	225809	2818	3201	979	1002	67.14	80.18
3	Alwaye	326.3	302176	365567	182394	183173	926	1120	993	1004	60.63	74.32
4	Parur	191.6	281047	320987	159605	161382	1467	1675	1002	1011	66.76	77.36
5	Kunnathunad	677.7	292113	348168	175436	172732	431	514	987	985	61.60	74.46
6	Muvattupuzha	433.5	250227	277694	139163	138531	577	641	1000	995	65.95	77.28
7	Kothamangalam	285.0	142378	164735	82898	81837	500	578	985	987	60.10	72.31
	District total	2408.0	2163674	2535294	1269174	1266120	910	1053	988	998	65.37	76.82

Source: Census reports.

1.4 Taluk-wise distribution of rural and urban population and density—1971 and 1981

Serial number	Taluk	1971						1981					
		Rural			Urban			Rural			Urban		
		Number	Percentage to total	Density	Number	Percentage to total	Density	Number	Percentage to total	Density	Number	Percentage to total	Density
1	2	3	4	5	6	7	8	9	10	11	12	13	14
1	Kanayannur ..	230826	46.27	958	268058	53.73	3281	163127	26.87	1003	449957	79.13	2774
2	Cochin ..	160573	40.46	1732	236276	59.54	4902	199177	44.16	2049	251882	55.84	5768
3	Alwaye ..	265177	87.76	849	36999	12.24	2643	311982	85.34	1057	53585	14.66	1716
4	Kunnathunad ..	271225	92.85	408	20888	7.15	1536	325104	93.38	490	23064	6.62	1697
5	Parur ..	235929	83.95	1371	45118	16.05	2314	149018	46.42	1315	171969	53.58	2196
6	Muvattupuzha ..	228090	91.15	543	22137	8.85	1680	252381	90.88	600	25313	9.12	1921
7	Kothamangalam ..	135844	95.41	486	6534	4.59	1132	131613	79.89	532	33122	20.11	884
	District total ..	1527664	70.61	708	636010	29.39	3245	1532402	60.44	755	1002892	39.56	2656

Source: Census reports

1.5 Area and population of Municipalities and Towns—1981

Serial number	Municipality/Town	Area in sq. km.	Population			Total	Percentage to total district population
			Male	Female	Total		
1	2	3	4	5	6	7	
1	Cochin Corporation	94.88	258323	254926	513249	20.24	
2	Always Municipality	7.18	12499	12779	25278	1.00	
3	Ankamaly	24.05	14012	14295	28307	1.12	
4	Perumbavoor	13.59	11748	11316	23064	0.91	
5	Kothamangalam	37.45	16625	16497	33122	1.31	
6	Muvattupuzha	13.18	12784	12529	25313	1.00	
7	Trippunithura	18.69	21652	21994	43646	1.72	
8	Parur	9.03	12932	13356	26288	1.04	
9	Eloor	20.73	23976	22880	46856	1.85	
10	Kalamassery	27.00	22801	20966	43767	1.73	
11	Vadakkkara	16.71	20565	21702	42267	1.67	
12	Chennamangalam	10.83	12573	13320	25893	1.02	
13	Kottuvally	21.00	15191	15474	30665	1.21	
14	Mulavukad	19.27	10652	10745	21397	0.84	
15	Maradu	12.35	14306	14443	28749	1.13	
16	Thrikkakara	27.46	19230	19088	38318	1.51	
17	Cheriatadavu	4.13	3278	3435	6713	0.26	
	Total	377.6	503147	499745	1002892	39.56	

NM.—Non-municipal Town

Source: Census reports.

1.6 Taluk-wise distribution of households and average size of family--1971 and 1981

Serial number	Taluk	Number of households		Average size of households	
		1971	1981	1971	1981
1	2	3	4	5	6
1	Kanayannur	79212	106708	6.30	5.69
2	Cochin	61612	74907	6.44	6.02
3	Alwaye	48896	63270	6.18	5.78
4	Parur	44235	55415	6.35	5.79
5	Kunnathunad	49929	62426	5.85	5.58
6	Muvattupuzha	41269	49572	6.06	5.60
7	Kothamangalam	23751	28975	5.99	5.69
	Total	348904	441273	6.20	5.75

Source: Census reports.

1.7 Taluk-wise distribution of Scheduled Caste and Scheduled Tribe population 1971 and 1981

Serial number	Taluk	Scheduled Caste						Scheduled Tribe					
		1971			1981			1971			1981		
		Total	Male	Female	Total	Percentage to population	Percentage to total scheduled caste population	Total	Male	Female	Total	Percentage to population	Percentage to total scheduled tribe population
3	4	5	6	7	8	9	10	11	12	13	14		
1	Kanayannur ..	43763	26433	26206	52639	8.67	24.32	196	481	450	931	0.15	26.22
2	Cochin ..	25053	14116	14712	28828	6.39	13.32	47	187	192	379	0.08	10.67
3	Alwaye ..	26519	16052	15957	32009	8.76	14.79	79	160	135	295	0.08	8.31
4	Parur ..	27016	15476	15371	30847	9.61	14.25	23	452	419	871	0.27	24.53
5	Kunnathunad ..	33408	19920	20242	40162	11.54	18.55	40	333	326	659	0.19	18.56
6	Muvattupuzha ..	16223	9665	9545	19210	6.92	8.88	181	183	168	351	0.13	9.88
7	Kothamangalam ..	10793	6350	6398	12748	7.74	5.89	14	32	33	65	0.04	1.83
	Total ..	182775	103012	108431	216443	8.54	100.00	580	1828	1723	3551	0.14	100.00

Source: Census reports.

1-8 Population by religion 1971 and 1981

Serial number	Religion	1971@		1981	
		Number	Percentage	Number	Percentage
1	2	3	4	5	6
1	Budhists	310	0.01	135	0.01
2	Christians	989962	41.54	1019249	40.20
3	Hindus	1096374	46.01	1173596	46.29
4	Jains	1225	0.05	1072	0.04
5	Muslims	293956	12.33	339737	13.39
6	Sikhs	882	0.04	888	0.04
7	Other religions	132	0.01	167	0.01
8	Religion not stated	337	0.01	450	0.02
	All religions	2383178	100.00	2535294	100.00

@ Before the formation of Idukki District.

Source: Census reports.

1.11 Taluk-wise distribution of main workers under various industrial categories—1981

Serial number	Taluk	Cultivators		Agricultural labourers		Household industry workers		Other workers		Total workers	
		Number	Percentage to total population	Number	Percentage to total population	Number	Percentage to total population	Number	Percentage to total population	Number	Percentage to total population
1	2	3	4	5	6	7	8	9	10	11	12
1	Kanayannur	4125	0.68	13569	2.24	3165	0.52	139503	22.98	160362	26.42
2	Cochin	627	0.14	1927	0.43	2046	0.45	105577	23.41	110177	24.43
3	Alwaye	14044	3.84	24300	6.65	7815	2.14	65262	17.85	111421	30.48
4	Parur	3265	1.02	7581	2.36	3528	1.10	67252	20.95	81626	25.43
5	Kunnathunad	22051	6.33	38534	11.07	4952	1.42	46720	13.42	112257	32.24
6	Muvattupuzha	19685	7.09	24681	8.89	1743	0.62	38094	13.72	84203	30.32
7	Kothamangalam	10118	6.14	19256	11.69	684	0.42	19478	11.82	49536	30.07
	District total	73915	2.92	129848	5.12	23933	0.94	481886	19.01	709582	27.99

Source: Census reports.

1.12 Sex—Classification of main workers under various Industrial categories in taluks—1981

Serial number	Taluk	Cultivators		Agricultural Labourers		Household Industry workers		Other workers		Total workers	
		Male	Female	Male	Female	Male	Female	Male	Female	Male	Female
1	2	3	4	5	6	7	8	9	10	11	12
1	Kanayannur	3758	367	7623	5946	2225	940	113156	26347	126762	33600
2	Cochin	540	87	1407	520	1270	776	87573	18004	90790	19387
3	Alwaye	11895	2149	12311	11989	3013	4802	51514	13748	78733	32688
4	Parur	2925	340	3620	3761	2138	1390	55058	12194	63941	17685
5	Kunnathunad	18719	3332	20337	18197	2376	2576	39742	6978	81174	31083
6	Muvattupuzha	18776	909	15293	9388	1198	545	31528	6566	66795	17408
7	Kothamangalam	9533	585	10943	8313	503	181	16523	2955	37502	12034
	District total	66146	7769	71734	58114	12723	11210	395094	86792	545697	163885

Source: Census reports.

**1.13 Number of applicants on the Live Register of
Employment Exchanges 1982-83 to 1984-85**

<i>Sl. No.</i>	<i>Qualification</i>	<i>1982-83</i>	<i>1983-84</i>	<i>1984-85</i>
(1)	(2)	(3)	(4)	(5)
1.	Below S.S.L.C.	147244	148784	115222
2.	S.S.L.C.	111989	126643	129405
3.	P.D.C.	20592	20870	13749
4.	Graduates	13029	13557	10121
5.	Postgraduate	401	390	626
	Total	293255	310244	269123

Source: Department of Employment

**1.14 Registration and placements effected by Employment
Exchanges—(1970-71, 1980-81 and 1984-85)**

<i>Year</i>	<i>Total No. on Live Register</i>	<i>No. of fresh Registration</i>	<i>No. of vacancies notified</i>	<i>No. of placements effected</i>
(1)	(2)	(3)	(4)	(5)
1970-71	49702	33181	4274	2710
1980-81	232470	66839	5503	2770
1984-85	271301	20600	1902	933

Source: Divisional Employment Exchange

SECTION 2

AGRICULTURE



2.1 Normal and average annual rainfall (mm.)

<i>Year</i>	<i>Normal rainfall</i>	<i>Average annual rainfall</i>
(1)	(2)	(3)
1975	3548.5	3539.9
1980	3548.5	3293.0
1985	3548.5	3326.3

Source: Meteorological Centre, Trivandrum

2.2. Monthly rainfall at rain recording stations

(mm.)

Serial number	Station	Year	Monthly rainfall					
			January	February	March	April	May	June
1	2	3	4	5	6	7	8	9
1	Cochin	1975	1.4	*	19.4	*	186.8	829.9
		1980	..	3.4	33.0	71.1	40.5	941.7
		1985	87.2	17.8	57.7	71.1	520.3	963.6
2	North Parur	1975	1.0	..	112.0	122.0	178.0	782.0
		1984	7.0	4.0	50.0	79.0	91.0	557.0
		1985	85.5	..	2.0	8.0	262.0	899.0
		1980	15.0	575.4
		1984	95.6	135.2	71.0	252.4	137.2	848.9
		1985	143.6	..	7.1	53.4	440.8	1129.5
4	Alwaye	1975	26.0	4.0	62.0	82.0	136.8	714.5
		1980	129.3	..	865.4
		1985	91.4	..	1.7	53.8	262.8	1095.8
5	Neriyamangalam	1980	279.5	386.7	1096.5
		1984	104.8	120.4	211.2	384.4	227.2	1203.9
		1985	142.4	41.2	85.5	374.0	357.8	1355.6
6	Piravam	1980	97.7	..	876.9
		1984	53.0	189.9	159.1	306.7	113.4	1054.0
		1985	141.8	16.2	77.5	136.6	272.2	1099.1

2.2. Monthly rainfall at rain recording stations—(cont.)

(mm.)

Serial number	Station	Year	Monthly rainfall												Total
			July	August	September	October	November	December	10	11	12	13	14	15	
1	Cochin	1975	472.3	556.1	436.7	*	185.1	2708.7							
		1980	814.5	405.2	73.9	389.8	227.1	3050.3							
		1985	414.2	299.1	135.8	127.2	62.7	2892.1							
2	North Parur	1975	607.0	542.0	451.0	476.0	241.0	3512.0							
		1984	590.0	180.0	32.0	230.0	36.0	1867.0							
		1985	348.0	137.0	80.0	162.0	8.0	2046.5							
3	Odakali	1980	324.0	140.5	5.0	64.0	11.0	1134.9							
		1984	788.4	351.8	157.7	323.2	100.0	3281.2							
		1985	561.1	380.9	93.5	281.4	65.7	3233.9							
4	Alwaye	1975	617.5	569.4	490.9	462.2	..	3165.3							
		1980	818.6	439.3	146.4	313.5	178.3	2914.6							
		1985	434.1	384.2	157.2	266.8	102.7	2909.0							
5	Neriamangalam	1980	1760.5	707.7	271.5	702.8	637.5	5955.7							
		1984	1226.8	527.2	342.0	538.4	220.8	5114.3							
		1985	1031.6	703.0	213.8	333.0	119.8	4989.3							
		1980	902.9	477.8	107.5	217.4	447.6	3186.6							
6	Piravam	1984	840.1	304.0	95.0	314.4	170.4	3623.1							
		1985	594.4	460.4	165.5	235.3	182.0	3422.9							
								41.9							

Source: Observatory.

*Data not received

2.3 Distribution of area according to land utilisation

(Area in Hectares)

Serial number	Classification	(Area in Hectares)						
		1970-71 as on 30-6-1971	1975-76 as on 30-6-1976	1980-81 as on 30-6-1981	1983-84 as on 30-6-1984	1984-85		
1	2	3	4	5	6	7		
1	Total Geographical area according to village papers	317428	235319	235319	235319	235319	235319	
2	Forests	55212	8123	8123	8123	8123	8123	
3	Land put to non-agricultural use	27325	30460	32752	34222	33544	33544	
4	Barren and uncultivable land	4345	2020	2649	2649	2869	2869	
5	Permanent pastures and other grazing land	2000	968	198	166	166	166	
6	Land under miscellaneous tree crops	344	4005	1343	1929	1209	1209	
7	Cultivable waste	3620	4740	5304	5010	5401	5401	
8	Fallow land other than current fallow	2887	2399	3079	2775	2648	2648	
9	Current fallow	3239	4815	3714	3563	3232	3232	
10	Net area sown	218516	177789	178157	177482	178127	178127	
11	Area sown more than once	58365	61534	80658	67960	68724	68724	
	Total cropped area	276881	239323	258815	245442	246851	246851	

2.4 Distribution of operational holdings according to size of holding 1976-77 and 1980-81

<i>Size of holding (in hectare)</i>	<i>Number</i>	
	<i>1976-77</i>	<i>1980-81</i>
(1)	(2)	(3)
0.02—0.99	291538	325277
1.00—1.99	29969	25641
2.00—3.99	9857	10362
4.00—9.99	2278	1903
10.00 and above	69	228
Total	<u>333711</u>	<u>363411</u>

Source: Agriculture Census

2.5 Area and yield of principal crops

(Area in hectare and yield in MT)

Crops	1975-76		1980-81		1983-84		1984-85	
	Area	Yield	Area	Yield	Area	Yield	Area	Yield
1	2	3	4	5	6	7	8	9
Food Crops								
Rice	88943	119160	102500	144601	86732	119054	89183	149199
Pulses	2476	1256	1515	1085	1445	1035	1395	999
Sugarcane	28	112	80	495	59	340	50	288
Pepper	6499	1092	6652	1264	6665	1560	6191	547
Ginger	1632	3883	2162	5474	2177	5403	2282	7385
Turmeric	679	669	789	1462	710	1276	626	1125
Cardamom	7242	876	6151	1098	6192	797	5727	1089
Betel nuts (+)	4965	37414	4557	27634	4895	38863	5478	42857
Banana & Plantain	3375	3787	4067	2103	4032	2064	3809	1383
Cashew nuts	17091	323702	12462	240267	11874	252323	10364	205207
Tapioca								
Total	160710	..	163568	..	145961	..	144462	..

2.5 Area and yield of principal crops—(cont.)

Crops	1975-76		1980-81		1983-84		1984-85	
	Area	Yield	Area	Yield	Area	Yield	Area	Yield
	2	3	4	5	6	7	8	9
Non-food crops								
Sesamum ..	1867	621	2482	769	2303	701	2131	298
Coconut (+) ..	50726	269	60881	327	62038	264	55678	363
Tea ..	45	..	30	..	2	..	2	..
Coffee ..	1367	53	172	100	247	66	274	225
Rubber ..	23096	13556	23334	13929	27580	16498	34319	21727

(+) Million nuts

TABLE 2.6—(cont.)

Taluk	1981-82								1982-83							
	Autuma		Winter		Summer		Autumn		Winter		Summer		Mean Yield			
	Cropped area	Mean yield	Cropped area	Mean yield	Cropped area	Mean yield	Cropped area	Mean yield	Cropped area	Mean yield	Cropped area	Mean yield	Cropped area	Mean Yield		
	14	15	16	17	18	19	20	21	22	23	24	25				
Kanayannur	4630	1553	3773	1585	441	2397	3876	1593	3970	1949	162	556				
Cochin	1671	2262	9598	2081	6465	1966	2533	2453	9889	2532	6683	2700				
Alwaye	9759	2148	4006	2511	2698	2657	9870	2620	3116	1824	1718	1649				
Parur	3311	2041	13813	2413	7839	2429	3598	2248	13296	2371	5346	1675				
Kunnathumad	10810	2089	6103	2735	1207	1892	1311	2371	6343	2378	895	2199				
Muvattupuzha	5486	2819	4086	2402	753	2258	4896	3258	4263	2403	306	1567				
Kothamangalam	4435	2308					4039	2621								

TABLE 2-6—(cont.)

Taluk	1983-84						1984-85					
	Autumn		Winter		Summer		Autumn		Winter		Summer	
	Cropped area	Mean yield	Cropped area	Mean yield	Cropped area	Mean yield	Cropped area	Mean yield	Cropped area	Mean yield	Cropped area	Mean yield
Kanayannur ..	3417	2235	3702	2300	546	2771	3472	1995	4042	2330	434	2721
Cochin ..	2329	1844	9117	2137	5048	2224	2160	1755	9395	2552	5219	2307
Alwaye ..	8543	2404	2174	1089	1294	2654	8543	2892	2742	2636	1375	2950
Farur ..	3450	1169	12985	1619	5335	1833	11881	2276	13025	2491	5408	2539
Kunnathunad ..	10941	1885	5772	2617	1256	2758	4491	2517	5493	2847	1134	2203
Muvattupuzha ..	4144	2998	3244	2006	523	2229	3634	2881	3725	2535	501	2099
Kothamangalam ..	3512	2619										
	26	27	28	29	30	31	32	33	34	35	36	37

2.7 Area irrigated by sources

(in hectares)

Year	Major		Medium		Minor		Total	
	Gross	Net	Gross	Net	Gross	Net	Gross	Net
1978-79	42950	18880	15254.00	..	34134.00
1980-81	44580	18880	19619.05	13958.38	64199.05	32838.38
1984-85	44580	18880	20884.68	14890.47	65464.68	33770.47

Source: 1. Periyar Valley Irrigation Project.
2. P.W.D. Minor Irrigation.

2-8 Agricultural Implements and Machinery 1982

Hand Operated Implements

1. Seed Fertilizer Drill	..	1467
2. Seed drill	..	18
3. Chaff cutter	..	91
4. Wheel hoc	..	189
5. Sprayers	..	4987
6. Duster	..	245

Animal Operated Implements

7. Wooden plough	..	29662
8. Soil stirring (steel plough) Iron plough	..	3118
9. Soil turning (steel plough)	..	937
10. Disc harrow	..	51
11. Cultivator (Trihalo)	..	10
12. Seed-cum-fertilizer drill	..	5
13. Seed drill	..	150
14. Leveller	..	13305
15. Wet land puddler	..	204
16. Olpad Thresher	..	45
17. Animal cart	..	263
18. Persian wheel	..	26
19. Sugarcane crusher	..	5

Plant Protection Equipments and Engines etc.

20. Power operated sprayer/duster	..	158
21. Diesel engine pumpset	..	1467
22. Electric pumpset	..	18283

Tractor Power and Other Implements

23. Power filter (for agricultural purpose)	..	940
24. Tractor (for agricultural purpose)	..	141
25. Mould board plough	..	389
26. Disc harrow	..	21
27. Seed drill	..	5
28. Seed-cum-fertilizer drill	..	4
29. Planter	..	10
30. Leveller	..	1019
31. Potato digger	..	1
32. Trailer	..	29
33. Combined harvester	..	13

Other Power Operated Equipments (Tractor Attached)

34. Thresher (Wheat)	..	1
35. Thresher (Paddy)	..	24
36. Thresher (Multicrop)	..	9
37. Sugarcane crusher	..	1

Source: Livestock Census 1982.

2.9 Livestock population

		(Number)	
<i>Items</i>		1977	1982
(1)		(2)	(3)
<i>Cattle.—</i>			
Male over 3 years	..	55976	31767
Female over 3 years	..	119830	142962
Young stock	..	121637	129638
Total	..	<u>297443</u>	<u>304367</u>
<i>Buffalows.—</i>			
Male over 3 years	..	16251	14829
Female over 3 years	..	9179	8327
Young Stocks	..	3260	4116
Total	..	<u>28690</u>	<u>27272</u>
Sheep	253
Goat	..	156280	180354
Horses and Ponics	1
Mules
Donkeys	6
Pigs	..	22720	15335
Elephants	66
Total Livestock	..	<u>505133</u>	<u>527654</u>
<i>Poultry.—</i>			
Fouls	..	1444649	1489939
Ducks	..	105935	126003
Others	..	355	8210
Total	..	<u>1550939</u>	<u>1624152</u>

2.10 Number of Veterinary institutions, personnel and Livestock treated

<i>Description</i>	<i>1975-76</i>	<i>1980-81</i>	<i>1984-85</i>
(1)	(2)	(3)	(4)
1. <i>No. of institutions.—</i>			
(a) Hospitals ..	9	38	51
(b) Dispensaries (including Poly Clinic) ..	29	9	12
2. <i>No. of Veterinary personnel.—</i>			
(a) Veterinary surgeons ..	52	54	81
(b) Others	82
3. Cases for anti-rabic treatments done post prophylactic ..	1260	538	3380
4. Inpatients treated	50	..	3
5. Outpatients treated	223431	290519	336092
Total ..	<u>223481</u>	<u>290519</u>	<u>336095</u>
6. No. of obstetrical cases ..	1311	2273	2500
7. No. of castrations ..	1940	2414	2123
8. Other operations ..	5268	5332	8417
Total ..	<u>8519</u>	<u>10019</u>	<u>13040</u>

Source.—Animal husbandry department

2.11 Livestock slaughtered in panchayats

Year	Cattle			Buffaloes	Sheep and goats	Pigs	Others	Total
	Male	Female	Calves					
1	2	3	4	5	6	7	8	9
1981	1905	1765	103	4313	3446	1111	9	12652
1982	899	789	157	3655	2392	1257	..	9149
1983	692	268	196	3566	2662	1688	..	9072

2.12 Livestock slaughtered in Municipalities and Corporation

Year	Cattle			Buffaloes	Sheep and goats	Pigs	Others	Total
	Male	Female	Calves					
1	2	3	4	5	6	7	8	9
1981	26947	5955	N.A.	3344	62795	N.A.	N.A.	99051
1982	24353	6543	"	3261	58491	"	"	92648
1983	27500	6461	"	3557	69857	"	"	106875

N.A.—Not available

Source: Directorate of Animal Husbandry, Trivandrum

2.13 Taluk-wise distribution of fishermen households and fishermen population

Serial number	Name of taluk*	Marine						Inland						Total			
		Number of households			Population			Number of households			Population			Number of households		Population	
		3	4	5	6	7	8	9	10	11	12	13	14	Male	Female	Total	
1	Always	249	256	767	1623	249	856	767	1623	249	856	767	1623
2	Cochin	7774	26026	25303	51329	2519	7944	7807	15751	10293	33970	33110	67080	10293	33970	33110	67080
3	Kanayannur	399	1366	1374	2740	2613	8658	8404	17062	3012	10024	9778	19802	3012	10024	9778	19802
4	Moovattupuzha	120	329	310	639	120	329	310	639	120	329	310	639
5	Parur	200	657	654	1311	2300	7790	7338	15128	2500	8447	7992	16499	2500	8447	7992	16499
	District total	8373	28049	27331	55380	7601	25577	24626	50203	16174	53626	51957	105583	16174	53626	51957	105583

* Fishing taluks only

2.14 Out turn of major forest products

<i>Year</i>	<i>Timber</i>		<i>Fuel Firewood and Charcoal (M.T.)</i>
	<i>Round log (Vol. in cum.)</i>	<i>Round Poles (Poles Nos.)</i>	
(1)	(2)	(3)	(4)
1978-79	19250·240	138714	56920·450
1980-81	119420·00	187657	8882·07
1984-85	186·296	162798	2233·275

Source: Forest department

SECTION 3

INDUSTRIES AND BANKS

1950

**3.1 Number of non-agricultural enterprises and persons
working in rural and urban areas 1980**

(1)	<i>Rural</i> (2)	<i>Urban</i> (3)	<i>Total</i> (4)
No. of Non-agricultural Enterprises ..	52786	38167	90953
No. of persons usually working ..	125851	170702	296553

Source: Economic Census 1980 Quick tabulation results

3.2 Industry-wise distribution of registered factories and employment

Name of industry	Number of Registered factories				Average daily number of workers		
	1970-71		1980-81		1984		1984
	2	3	4	5	6	7	
1							
Manufacture of food products	42	75	68	5440	5165	4772	
Manufacture of Beverages, Tobacco and Tobacco products	..	1	1	..	20	20	
Manufacture of cotton textiles	..	5	6	2350	2000	2020	
Manufacture of wool, silk and synthetic fibre textiles	..	1	1	2000	2000	2000	
Manufacture of textile products including wearing apparel other than footwear	..	10	10	860	890	890	
Manufacture of wood products, furniture and fixtures	..	57	69	74	2593	2650	
Manufacture of paper and paper products, printing and publishing and allied industries	..	31	33	31	1724	2527	
Manufacture of rubber plastic petroleum and coal products	..	19	33	32	2740	2153	
Manufacture of chemicals and chemical products (except products of petroleum and coal)	..	22	47	44	8540	10285	
Manufacture of non-metallic mineral products	..	20	32	32	2289	2836	
Basic metal and alloys Industries	..	5	29	33	380	3506	
Manufacture of metal products and parts except machinery and transport equipments	..	42	34	33	2705	1065	
Manufacture of machinery machine tools and parts except electrical machinery	..	1	23	22	2000	2690	

Manufacture of electrical machinery apparatus, appliances and supplies and parts	..	13	18	23	3350	4084	4108
Manufacture of transport equipment and parts	..	13	9	9	2555	1331	1331
Other manufacturing industries	..	3	3	4	200	200	229
Electricity	..	2	1	1	100	50	50
Gas and steam	1	1	..	50	50
Water works and supply	..	1	3	3	50	171	171
Water transport	1	1	..	1016	1016
Storage and warehousing	..	1	..	1	50	..	50
Personal services	..	1	13
Repair service	..	12	27	31	1551	1221	1334

Source: Inspectorate of Factories and Boilers

**3.3 Industry-wise distribution of small scale
industrial units 1985**

<i>Sl. No.</i>	<i>Name of industry</i>	<i>No. of units</i>
(1)	(2)	(3)
1.	Edible oil	300
2.	Bakery beverages of other food products	366
3.	Textile and connected industry	184
4.	Wood, furniture and wood products	565
5.	Paper products, printing and publicity	233
6.	Rubber and plastic product	307
7.	Chemical and chemical products	611
8.	Non-metallic mineral products	427
9.	Basic metal products	476
10.	Machinery and tools and electrical goods	170
11.	Other manufacturing industries	556
12.	Repairing and servicing	260
13.	Others	39
	Total	4494

3.4 Details of handloom, coir and milk supply societies

(Rs. in lakhs)

Item	Handloom		Coir		Milk supply	
	1980-81	1983-84	1980-81	1984-85	1980-81	1984-85
1	2	3	4	5	6	7
Number of societies	16	23	40	36	89	132
Number of members	4375	4657	18194	19809	7722	24088
Paid up share capital	29.68	28.80	27.55	58.14	2.52	4.20
Deposits	..	18.19	2.48	8.22	1.74	14.88
Borrowings	3.96	150.79	32.73	36.94	2.43	2.01
Other funds including reserve funds	6.64	9.58	3.72	14.15	1.82	7.83
Total working capital	118.08	119.00	3273	38.08	0.70	18.74
Loan to members	N.A.	N.A.	N.A.	N.A.	3.99	5.30
Loan repaid	N.A.	N.A.	N.A.	N.A.	1.06	2.99
Loan outstanding	N.A.	N.A.	N.A.	N.A.	3.35	2.89

N.A.—Not Available

- Source.—1. Coir Project Office, Parur
 2. Dairy Development Department
 3. D.I. Centre, Ernakulam

3-5 Number of printing presses at work—Newspapers and periodicals published

Year	No. of printing presses at work			Daily			Weekly			Fortnightly			Monthly and Bi-monthly		
	1	2	3	4	5	6	7	8	9	10	11	12	13	14	Others
1975-76	65	16	16	3	..	17	3	1	10	2	..	21	5	2	
1980-81	350	20	20	6	..	19	2	..	26	3	2	53	15	1	
1984-85	602	27	27	6	..	48	6	..	64	5	5	136	40	6	

Year	No. of printing presses at work	Quarterly			Annually			Others							
		15	16	17	18	19	20	21	22	23	Others				
												Malayalam	English	Others	Malayalam
1975-76	65	1	5	2	..	6	..	3	..	3	..	2	..	2	
1980-81	350	14	2	4	3	..	2	2	..	3	..	1	
1984-85	602	40	7	2	8	1	3	1	1	3	1	3	2	2	

3.6 Details of scheduled commercial banks

<i>Item</i>	1975-76	1980-81	1984-85
(1)	(2)	(3)	(4)
Number of offices	264	358	385
Deposits (Rs. in lakhs)	12285	28970	42331
Advance amount outstanding (Rs. in lakhs)	11616	31008	48198

Source: Union Bank of India, Lead Bank, M.G. Road, Ernakulam.

TABLE 3.7

Details of non industrial co-operative societies

(Rs. in lakhs)

Sl. No.	Type of societies	No. of societies		No. of membership		Paid up share capital			Deposits		
		1982-83	1983-84	1982-83	1983-84	1982-83	1983-84	1982-83	1983-84		
		3	4	5	6	7	8	9	10		
1	District co-operative banks	1	1	391	411	121.49	129.35	1,629.50	2,124.17		
2	Primary land mortgage banks	2	2	18,852	21,615	32.12	39.63	0.28	0.28		
3	Primary agricultural credit societies and farmer's service societies	162	165	4,16,986	4,05,574	417.61	609.25	1,936.09	2,468.21		
4	Harijan	51	52	17,412	21,849	15.52	17.59	1.73	5.42		
5	Urban Banks	7	8	55,607	61,209	51.96	68.64	410.35	536.10		
6	Employees	110	113	54,068	56,602	213.72	220.26	477.17	616.81		
7	Others	18	18	17,658	22,737	16.31	16.80	91.35	120.27		
8	Marketing federation	2	2	107	111	231.61	281.61	0.56	0.53		
9	Primary marketing societies	5	6	6,821	7,040	19.16	22.21	2.62	2.60		
10	Poultry societies	5	6	928	1,286	0.15	0.25		
11	Collective Farming	1	1	137	137	0.02	0.01		
12	Joint farming	3	3	624	150	0.20	0.11		
13	Irrigation societies	4	4	1,205	1,238	0.43	0.47		
14	Consumer federation	1	1	25	25	120.97	125.97		
15	Wholesale consumer stores	1	1	14,355	14,412	24.75	24.49	0.72	0.94		
16	Primary consumer stores	40	40	23,004	23,994	16.15	17.29	9.04	11.87		
17	College stores	11	11	33,124	41,086	1.03	1.35	0.06	0.04		
18	School stores	342	343	4,61,744	4,87,310	7.16	6.00	2.14	..		
19	Apex housing	1	1	205	205	354.66	420.60		
20	Primary housing	44	44	13,069	15,821	75.08	96.89		
21	Labour contract	6	8	1,229	1,664	0.25	0.44		
22	Forest labour	1	1	497	497	0.03	0.03	0.07	0.07		
23	Transport societies	1	2	..	103	..	0.84		
24	Other non-credit societies	31	32	7,679	8,192	23.06	18.60		

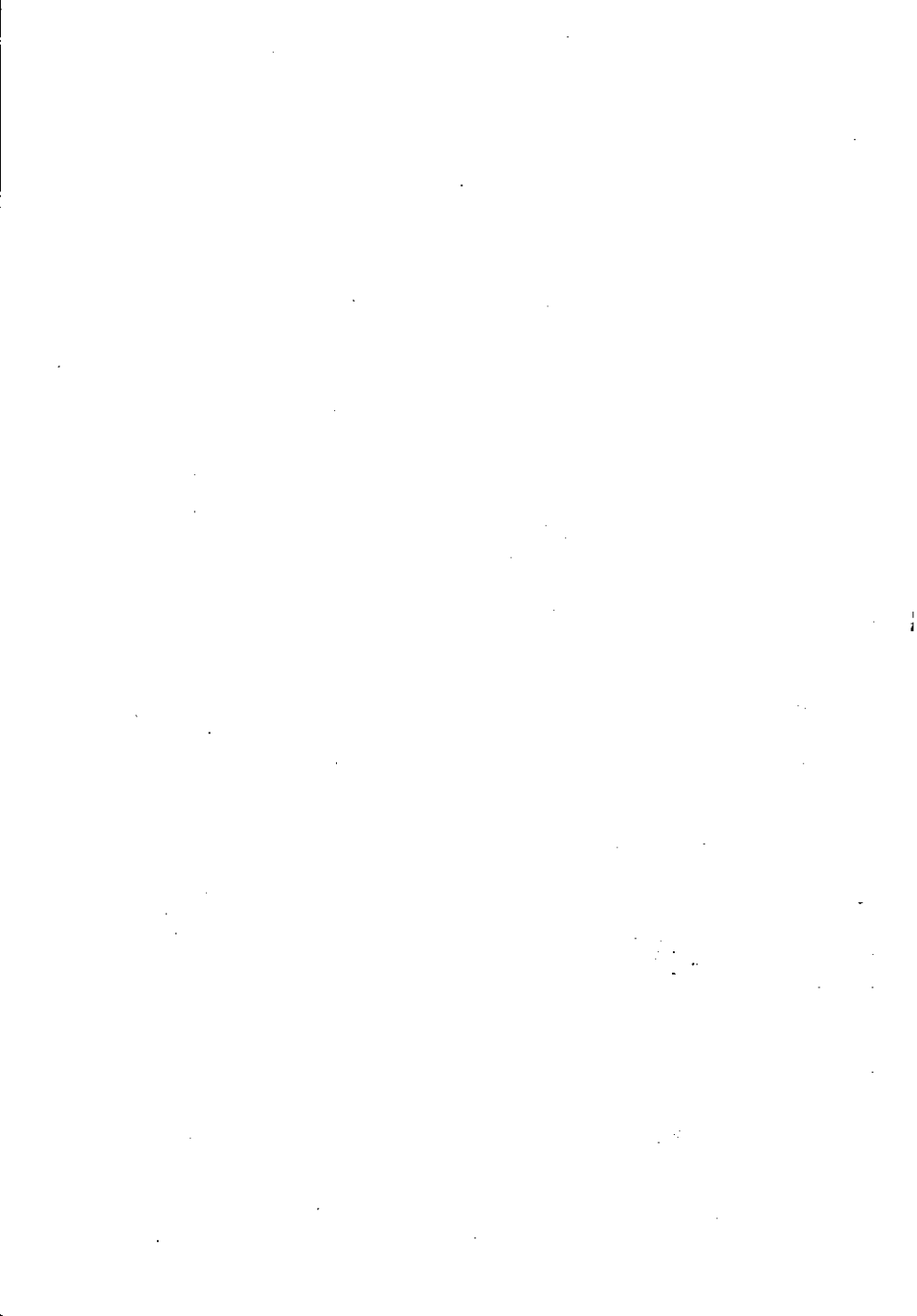
TABLE 3.7—(cont.)

(Rs. in lakhs)

45

Sl. No.	Type of societies	Borrowing		Reserve and other funds		Total working capital			Loans issued	
		1982-83	1983-84	1982-83	1983-84	1982-83	1983-84	1982-83	1983-84	
		11	12	13	14	15	16	17	18	
1	District co-operative banks	309.16	312.67	136.35	148.18	2,300.77	2,823.70	1,620.03	1,831.95	
2	Primary land mortgage banks	413.65	510.56	7.61	3.66	511.74	612.03	63.37	160.76	
3	Primary agricultural credit societies and farmers' service societies	988.11	1,352.21	256.22	243.19	4,862.63	6,586.22	2,550.18	3,312.79	
4	Harijan	27.92	32.70	4.04	1.16	65.86	83.76	10.97	21.49	
5	Urban Bank	28.01	38.81	38.58	50.10	574.45	735.68	705.21	601.25	
6	Employees	146.93	184.00	43.74	44.05	1,177.37	1,948.92	685.14	951.73	
7	Others	8.98	2.30	6.21	3.79	240.67	319.35	111.78	128.89	
8	Marketing federation	1,163.89	1,739.85	321.31	377.70	2,695.07	4,217.09	
9	Primary marketing societies	5.09	8.95	10.52	10.47	68.11	69.75	..	0.11	
10	Poultry societies	0.02	0.04	0.17	0.24	
11	Collective farming	..	0.25	0.01	0.01	
12	Joint farming	0.07	0.92	
13	Irrigation societies	0.33	0.03	0.53	0.30	5.12	5.04	
14	Consumer federation	166.30	254.02	75.87	4.46	414.82	522.66	
15	Wholesale consumer stores	23.92	79.70	1.02	23.39	249.27	221.52	
16	Primary consumer stores	18.19	18.32	11.38	17.28	225.49	148.37	
17	College stores	0.41	0.48	0.22	0.58	8.79	10.42	
18	School stores	2.01	1.30	2.90	33.10	33.10	33.20	
19	Apex housing	3,212.74	3,856.25	17.06	84.64	3,677.85	4,642.85	823.07	578.72	
20	Primary housing	396.78	496.82	21.13	11.40	693.71	835.59	106.59	11.69	
21	Labour contract	0.81	1.63	0.55	1.09	2.26	3.78	0.22	0.57	
22	Forest Labour	0.08	0.08	1.62	1.64	..	0.02	
23	Transport societies	2.13	
24	Other non credit societies	21.22	38.32	18.61	15.99	137.52	158.57	0.04	7.47	

Source: Co-operative Department



SECTION 4

TRANSPORT AND COMMUNICATION

4.1 Length of roads

(km.)

Type of roads	1975-76		1980-81		1984-85		Total
	Total	P. W. D.	(+) Others	Total	P. W. D.	(+) Others	
1	2	3	4	5	6	7	8
Cement or concrete	5	..	31	31	..	42	43
Bituminous or tarred	1246	1495.811	372	1868	1446	460	1906
Water bound mecadam	636	153.215	291	444	301	327	628
Lower type	619	137.210	434	571	116	436	552
Others	3	3
Total	2506	1786.368	1128	2914	1863	1268	3132

(+) Others—Includes roads under Irrigation Department, Forest Department, Cochin Corporation and Municipalities.

Source: P. W. D., P. V. I. project, Forest Department, Corporation and Municipalities

4.2 Details of roads maintained by Panchayats

		(km.)		
<i>Type of roads</i>		1975-76	1980-81	1984-85
(1)		(2)	(3)	(4)
1.	Black topped and .. metalled	15	129	1795
2.	Gravelled ..	317	1853	1461
3.	Earthern ..	1157	3811	3092
	Total ..	<u>1489</u>	<u>5793</u>	<u>6348</u>

Source: Panchayat Department

4.3 Length of Railway

		(kms.)		
<i>Type of guage</i>		1970-71	1980-81	1984-85
(1)		(2)	(3)	(4)
	Broad guage ..	41	78	78
	Metre guage ..	29
	Mixed guage ..	8
	Total ..	<u>78</u>	<u>78</u>	<u>78</u>

Source: Chief Engineer, Southern Railways

4.4. Number of registered motor vehicles on road

Sl. No.	<i>Type of vehicles</i>	1975-76	1980-81	1984-85
(1)	(2)	(3)	(4)	(5)
1.	Goods vehicles ..	2471	4504	6571
2.	Stage vehicles (buses) ..	521	864	1524
3.	Taxi cars ..	1548	2053	2573
4.	Motor car (Pvt.) ..	7029	10321	12985
5.	Jeep ..	422	816	1159
6.	Motor cycles ..	4736	12502	22989
7.	Autorikshaws ..	653	1826	3539
8.	Tractor trailors ..	346	350	958
9.	Others ..	469	882	735
	Total ..	<u>18195</u>	<u>34128</u>	<u>53033</u>

Source: Regl. Transport Office

4.5. Post and Telegraph Offices

Sl. No.	Type of offices	(No.)		
		1970-71	1980-81	1984-85
(1)	(2)	(3)	(4)	(5)
1.	Post Offices—			
	(a) Head Post Office ..	3	5	5
	(b) Department sub post offices ..	119	131	143
	(c) Experimental post offices ..	235	207	217
2.	No. of Telegraph offices ..	85	157	168
3.	No. of Telephone connections ..	8422	20686	26162
4.	No. of Telephone Exchanges ..	27	49	53
5.	No. of Public Telephones ..	114	N.A.	255
6.	No. of letter boxes—			
	(a) Urban ..	423	477	512
	(b) Rural ..	690	1066	1087

N.A.—Not Available

Source: P. and T. Departments

4.6. Number of accidents on road, persons killed and injured

Sl. No.	Accidents	1980-81	1984-85
(1)	(2)	(3)	(4)
1.	No. of vehicles involved ..	1109	1760
2.	Total No. of accidents ..	1054	1136
3.	Persons killed ..	154	187
4.	Persons injured ..	1285	2634
5.	Other information (specify)

Source: Police Department

SECTION 5
EDUCATION

5-1 Number of schools for general education

Sl. No.	Category	Government			Private aided			Private unaided			Total		
		1975-76	1980-81	1984-85	1975-76	1980-81	1984-85	1975-76	1980-81	1984-85	1975-76	1980-81	1984-85
1	2	3	4	5	6	7	8	9	10	11	12	13	14
1	L. P. Schools	227	226	207	277	279	284	6	6	15	510	511	506
2	U. P. Schools	79	79	83	112	106	100	5	5	14	196	190	197
3	High Schools	51	56	83	124	136	173	16	19	24	191	211	280
	Total	357	361	373	513	521	557	27	30	53	897	912	983

5-2 Number of schools for professional and special education

Sl. No.	Category	Government			Private aided			Private unaided			Total		
		1975-76	1980-81	1984-85	1975-76	1980-81	1984-85	1975-76	1980-81	1984-85	1975-76	1980-81	1984-85
1	2	3	4	5	6	7	8	9	10	11	12	13	14
1	T. T. C.	3	3	3	10	10	10	13	13	13

Source: Office of the Deputy Director (Edn.), Srimalam

5-3 Number of students in general education

Sl. No.	Category	Government			Private aided			Private unaided			Total		
		1975-76	1980-81	1984-85	1975-76	1980-81	1984-85	1975-76	1980-81	1984-85	1975-76	1980-81	1984-85
1	2	3	4	5	6	7	8	9	10	11	12	13	14
1	L. P. Schools	NA	68260	50001	NA	95974	77944	NA	2185	2448	274533	166419	130393
2	U. P. Schools	"	52814	49469	"	67656	56777	"	2565	2716	189094	123035	102902
3	High Schools	"	77528	88423	"	185044	199004	"	11616	13605	104728	274188	301032
	Total	"	198602	181833	"	348674	333725	"	16366	18769	567935	563642	539327

5-4 Number of students belonging to Scheduled Castes

Sl. No.	Category	Government			Private aided			Private unaided			Total		
		1975-76	1980-81	1984-85	1975-76	1980-81	1984-85	1975-76	1980-81	1984-85	1975-76	1980-81	1984-85
1	2	3	4	5	6	7	8	9	10	11	12	13	14
1	L. P. Schools	NA	8976	8250	NA	9276	9670	NA	32	141	NA	18284	18261
2	U. P. Schools	"	6488	5435	"	6338	6435	"	94	85	"	12920	11955
3	High Schools	"	9569	10532	"	18625	15798	"	357	331	"	28551	26656
	Total	"	25033	24217	"	34239	32098	"	483	557	"	59755	56872

5.5 Number of students belonging to Scheduled Tribes

Sl. No.	Category	Government			Private aided			Private unaided			Total		
		1975-76	1980-81	1984-85	1975-76	1980-81	1984-85	1975-76	1980-81	1984-85	1975-76	1980-81	1984-85
1	2	3	4	5	6	7	8	9	10	11	12	13	14
1	L. P. Schools	NA	117	118	NA	142	150	NA	1	2	NA	260	270
2	U. P. Schools	"	110	114	"	71	139	"	8	10	"	189	263
3	High Schools	"	131	156	"	164	179	"	6	12	"	301	347
	Total	"	358	388	"	377	468	"	15	24	"	750	880

N.A.—Not Available

Source: Education Department

5.6 Number of students belonging to Scheduled Castes and Scheduled Tribes for higher education (1984-85)

Sl. No.	Type of institution	1984-85				Total
		Government	Private	Government	Private	
1	2	3	4	5	6	
1	University departments	23	2631	23	23	
2	Colleges for general education	663	51	3294	3294	
3	Colleges for professional education	88	51	139	139	
	Total	774	2682	3456	3456	

Source: Collegiate education, University of Cochin

5.7 Number of teachers in general education

Sl. No.	Category	Government			Private aided			Private unaided			Total		
		1975-76	1980-81	1984-85	1975-76	1980-81	1984-85	1975-76	1980-81	1984-85	1975-76	1980-81	1984-85
1	2	3	4	5	6	7	8	9	10	11	12	13	14
1	L. P. Schools	NA	1944	1674	NA	2838	2548	NA	52	65	NA	4894	4287
2	U. P. Schools	"	1412	1925	"	2037	1840	"	111	247	"	3560	3412
3	High Schools	"	2571	3211	"	6040	6835	"	408	517	"	9019	10563
	Total	--	5927	6210	"	10915	11223	"	571	829	"	17413	18262

5.8 Number of teachers in Teacher Training Courses

Sl. No.	Category	Government			Private aided			Private unaided			Total		
		1975-76	1980-81	1984-85	1975-76	1980-81	1984-85	1975-76	1980-81	1984-85	1975-76	1980-81	1984-85
1	2	3	4	5	6	7	8	9	10	11	12	13	14
1	T.T.C.	64	64	60	55	55	56	119	119	116
	Total	64	64	60	55	55	56	119	119	116

Source: Education Department

5-9 Number of students for higher education

Sl. No.	Type of institution	1975-76			1980-81			1984-85		
		Government		Total	Government		Total	Government		Total
		3	4	5	6	7	8	9	10	11
1	2									
1	University departments	NA	18762	21738	2087	27119	2087	1121	33392	1121
2	Colleges for general education	2976	547	1284	4363	1161	31482	4949	38342	38342
3	Colleges for professional education..	737			786		1947	1019	1491	2510

Source: Collegiate education

5-10 Number of teachers for higher education

Sl. No.	Type of institution	1975-76			1980-81			1984-85		
		Government		Total	Government		Total	Government		Total
		3	4	5	6	7	8	9	10	11
1	2									
1	University departments	NA	917	1104	132	1398	132	155	1527	155
2	Colleges for general education	187	70	110	193	96	1591	271	1798	1798
3	Colleges for professional education..	40			62		158	71	121	192

Source: Collegiate education, University of Cochin

5.11 Number of institutions for higher education by type of management

Serial number	Type of institution	1975-76			1980-81			1984-85		
		Government	Private	Total	Government	Private	Total	Government	Private	Total
		2	3	4	5	6	7	8	9	10
1	University department	..	N.A.	..	16	..	16	17	..	17
2	Colleges for general education including oriental studies	..	2	15	3	18	21	4	19	23
3	Colleges for professional education	..	2	3	3	3	6	3	3	6

Source: Collegiate Education

SECTION 6

MEDICAL AND HEALTH CARE

6.1 Medical institutions, beds and personnel

(Number)

Serial number	Particulars	Modern Medicine			Ayurvedic Medicine			Homoeopathic medicine					
		1975-76	1980-81	1984-85	1975-76	1980-81	1984-85	1975-76	1980-81	1984-85			
		3	4	5	6	7	8	9	10	11			
	<i>I. Institutions</i>												
1	Government Hospitals	18	21	22	9	11	11	1	2	2			
2	Primary Health Centres	17	17	19
3	Dispensaries including T.B. centres..	53	57	56	29	32	39	9	12	22			
4	Grant in aid institutions	1	2	1	20	17	11	1			
	<i>II. Beds</i>	2420	2946	3156	154	170	180	25	50	50			
	<i>III. Medical personnel</i>												
1	Doctors	..	232	268	50	60	40	11	17	26			
2	Nurses and Mid-wives	..	643	849	..	28	19	..	4	6			
3	(Compounders)	..	121	130	..	40	39	24			
4	Pharmacists	432	..	123	108	53			
	Others			

Source: District Medical Offices

6.2 Patients treated in Medical institutions

(Number)

Serial number	Category	Government hospitals			Dispensaries		
		1975-76	1980-81	1984-85	1975-76	1980-81	1984-85
1	2	3	4	5	6	7	8
1	Modern Medicine*						
	Bed strength	2420	2946	3156
	Inpatients	145127	141137	156039
	Outpatients	2450402	29822576	3020411
2	Indigenous medicine						
	Bed strength	154	170	180
	Inpatients	..	2407	2090
	Outpatients	..	521260	581451	..	1025823	936298
3	Homoeopathic medicine						
	Bed strength	25	50	50
	Inpatients	256	467	467
	Outpatients	38288	103791	103591	68092	400879	825911

*Including dispensaries.

Source: District Medical Officers.

6.3 Family Welfare Programme

(Number)

Year	Sterilisation			I.U.C.D.	Induced abortion	Others	Grand total
	Vasectomy	Tubectomy	Total				
1	2	3	4	5	6	7	8
1975-76	7388	6647	14035	3381	2739	..	20155
1980-81	1667	9693	11360	1891	13251
1984-85	1171	18698	19869	4602	24471

Source: District Medical Office, Ernakulam.

6.4 Details of Private Medical Facilities, 1986

<i>System of Medicine</i>		<i>Number of Institutions</i>	<i>Number of Doctors</i>	<i>Number of para Medical Staff</i>	<i>Number of Beds</i>
(1)		(2)	(3)	(4)	(5)
Allopathy	..	441	1110	2758	8646
Ayurveda	..	365	387	86	79
Homoeopathy	..	371	389	55	71
Others	..	3	3
Total		<u>1180</u>	<u>1889</u>	<u>2899</u>	<u>8796</u>

SECTION 7

PRICES & WAGES

7.1 Farm Prices of important Com. modities (Centre-wise)

Serial number	Commodity	Unit	Parur			Kanyakannur			Cochin		
			Average Price			Average Price			Average Price		
			1975	1980	1985	1975	1980	1985	1975	1980	1985
1	2	3	4	5	6	7	8	9	10	11	12
1	Paddy	..	173-39	136-90	206-01	258-07	137-23	223-05	200-69	139-51	..
2	Coconut (with husk)	..	78-92	141-25	193-96	80-40	145-69	183-88	80-08	138-42	186-46
3	Banana	..	25-61	39-58	58-48	..	46-90	12-45
4	Areca nut	..	3-48	7-31	9-28	3-44	5-54	9-54	3-75	6-73	..
5	Pepper (Dry)	1305-45
6	Tapioca (Raw)	..	31-46	46-46
7	Ginger (Dry)
8	Cashewnut	580-00

TABLE 7-I—(cont.)

Serial number	Commodity	Unit	Moovattupuzha				Kunnathunadu			
			Average Price				Average Price			
			1975	1980	1985		1975	1980	1985	
			13	14	15	16	17	18		
1	Paddy	..	259.51	145.47	254.42	255.49	147.12	234.26		
2	Coconut (with husk)	..	77.33	141.04	174.79	85.13	146.54	190.63		
3	Banana	..	23.91	45.08	61.96	28.92	32.19	54.38		
4	Arecanut	..	2.06	5.97	11.67	4.01	6.95	10.92		
5	Pepper (Dry)	..	1057.50	1297.27	..	1000.00	1386.67	3702.92		
6	Tapioca (Raw)	..	31.04	38.70	61.04	32.08	36.25	63.06		
7	Ginger (Dry)	..	681.50	425.68	438.33	1293.75		
8	Cashewnut	..	275.63	580.00	..	272.50	575.00	796.88		

TABLE 7.1—(cont.)

Serial number	Commodity	Unit	Always				Kothamangalam			
			Average Price				Average Price			
			1975	1980	1985	1985	1975	1980	1985	1985
1	Paddy	..	235.25	134.77	231.62	..	153.73	232.10	232.10	
2	Coconut (with husk)	..	78.54	142.92	204.58	..	139.90	190.63	190.63	
3	Banana	..	25.92	35.48	56.25	..	34.42	52.50	52.50	
4	Arecanut	..	3.49	7.19	14.28	..	5.22	8.52	8.52	
5	Pepper (Dry)	1276.88	1297.50	3357.50	3357.50	
6	Tapioca (Raw)	..	30.00	35.29	65.63	..	37.40	58.54	58.54	
7	Ginger (Dry)	373.75	421.88	1515.00	1515.00	
8	Cashewnut	..	276.67	580.00	768.75	768.75	

7.2 Farm prices of important commodities (Month-wise)

Commodity	Year	Unit	January	February	March	April	May	June	July
1	2	3	4	5	6	7	8	9	10
Centre: Parur									
Paddy	1975	Qtl.	141.23	144.68	144.68	144.68	146.47	144.13	144.96
	1980	"	174.99	174.72	169.76	169.76	189.74	214.95	231.49
Coconut with husk	1975	100 Nos.	100.00	95.00	77.50	75.00	75.00	75.00	65.00
	1980	"	120.00	120.50	122.50	127.50	140.00	145.00	150.00
Banana	1985	"	299.25	253.00	230.50	212.75	197.75	174.50	179.00
	1975	"	21.00	23.50	25.00	30.00	30.00	30.00	39.00
	1980	"	39.00	42.00	37.50	35.00	38.50	39.00	70.00
	1985	"	57.50	52.50	40.00	44.00	57.50	70.00	70.00
Arccanut	1975	"	3.00	3.00	3.00	3.00	3.00	4.50	5.00
	1980	"	5.50	6.50	7.00	9.75	11.00	9.00	8.00
Pepper (Dry)	1985	"	8.50	9.50	10.00	10.00
	1975	Qtl.
	1980	"
	1985	"
Tapioca	1975	"	32.00	31.00	32.00	32.00	32.00	35.00	33.50
	1980	"	50.00	50.00	50.00	50.00	57.50	50.00	37.50
Ginger (Dry)	1985	"
	1975	Qtl.
	1980	"
	1985	"
Cashewnut	1975	"
	1980	"
	1985	"

7.2 Farm prices of important commodities (Month-wise)—(cont.)

Commodity	Year	Unit	August	September	October	November	December	Average	Remarks
			11	12	13	14	15	16	17
Centre: Parus—(cont.)									
Paddy	1975	Qtl.	158.46	172.24	189.46	173.39	
	1980	"	..	130.07	120.02	120.02	124.98	136.90	
	1985	"	..	231.49	231.49	231.49	220.74	206.01	
Coconut with husk	1975	100 Nos.	231.49	75.00	75.00	82.00	82.50	78.92	
	1980	"	70.00	155.00	155.00	155.00	152.50	141.25	
	1985	"	152.50	153.00	169.00	145.00	152.50	193.96	
Banana	1975	"	161.25	25.00	25.00	25.00	25.00	25.61	
	1980	"	..	40.00	40.00	40.00	40.00	39.58	
	1985	"	45.00	69.00	..	55.00	50.00	58.48	
Areca nut	1975	"	71.25	3.50	3.00	3.48	
	1980	"	4.25	3.50	3.50	6.00	6.00	7.31	
	1985	"	7.00	6.00	6.00	9.00	10.00	9.28	
Pepper (Dry)	1975	Qtl.	8.50	8.00	10.00	
	1980	"	
	1985	"	
Tapioca	1975	"	30.00	30.00	..	30.00	30.00	31.46	
	1980	"	40.00	40.00	30.00	45.00	45.00	46.46	
	1985	"	42.50	
Ginger (Dry)	1975	Qtl.	
	1980	"	
	1985	"	
Cashewnut	1975	"	
	1980	"	
	1985	"	

7.2 Farm prices of important commodities (Month-wise)

Commodity	Year	Unit	January	February	March	April	May	June	July
1	2	3	4	5	6	7	8	9	10
Centre: Kanayannur									
Paddy	1975	Qul.	248.02	261.8J	292.80	299.69	296.25	310.03	282.47
	1980	"	130.90	130.90	132.69	194.35	137.79	337.79	137.79
	1985	"	192.91	192.91	192.91	199.80	213.57	227.35	244.58
Coconut with husk	1975	100 Nos.	96.50	88.50	83.00	85.50	83.50	79.50	68.25
	1980	"	129.25	131.00	118.50	128.50	137.00	147.00	155.00
	1985	"	332.50	200.00	192.50	137.50	200.00	182.50	172.50
Banana	1975	"	45.50	43.50	43.00	41.00	45.00	45.50	48.50
	1980	"							
	1985	"	2.95	3.20	3.40	3.63	3.85	4.05	3.83
Areca nut	1975	"	5.25	6.00	5.75	6.50	6.50		
	1980	"	6.00	13.00					
	1985	"							
Tapioca	1975	Qul.							
	1980	"							
	1985	"							
Cashewnut	1975	"			580.00	580.00	580.00		
	1980	"							
	1985	"							
Pepper	1975	"	1387.50	1347.50	1272.50	1270.00	1230.00	1762.50	1210
	1980	"							
	1985	"							

7.2 Farm prices of important commodities (Month-wise—(cont.))

Commodity	Year	Unit	August	September	October	November	December	Average	Remarks
			11	12	13	14	15	16	17
Centre: Kanyakumari									
Paddy	1975	Qtl.	254.91	206.69	213.57	227.35	203.24	258.07	
	1980	"	139.58	141.23	137.79	141.22	144.68	137.23	
	1985	"	248.02	241.13	230.80	244.58	248.02	223.05	
Coconut with husk	1975	100 Nos.	70.50	71.00	76.00	84.50	78.00	80.40	
	1980	"	155.75	161.00	170.25	172.50	142.50	143.69	
	1985	"	147.50	147.50	147.50	146.50	140.00	183.88	
Banana	1975	"	55.50	52.50	49.00	46.90	
	1980	"	
	1985	"	0.65	3.45	3.40	3.05	2.80	3.44	
Arecanut	1975	"	4.50	4.25	5.54	
	1980	"	8.00	8.00	8.75	11.00	12.00	9.54	
	1985	"	
Tapioca	1975	Qtl.	
	1980	"	
	1 85	"	
	1975	"	
	1980	"	
	1985	"	
Cashewnut	1975	"	
	1980	"	
	1985	"	
Pepper	1975	"	
	1980	"	1172.50	1257.50	1460.00	1490.00	..	580.00	
	1985	"	
	1985	"	1305.45	

7.2 Farm prices of important commodities (Month-wise)—(cont.)

Commodity	Year	Unit	August	September	October	November	December	Average	Remarks
			11	12	13	14	15	16	17
Centre : Cochin—(cont.)									
Paddy	1975	Qtl.	137.79	198.14	203.24	200.69	
	1980	"	141.23	..	139.51	
Coconut with husk	1975	100 Nos.	71.50	72.00	73.50	80.00	75.00	80.08	
	1980	"	142.50	147.50	150.00	150.00	147.50	138.42	
Banana	1985	"	157.50	155.00	152.50	152.50	145.00	186.46	
	1975	100 Nos.	
	1980	"	
Areca nut	1975	"	3.90	3.55	3.45	2.95	2.90	3.75	
	1980	"	7.50	7.25	5.25	4.00	4.75	6.73	
Pepper (Dry)	1975	Qtl.	14.00	12.00	10.00	..	11.00	12.45	
	1980	"	
Tapioca	1985	"	
	1975	"	
Ginger (Dry)	1980	"	
	1985	"	
Gas:ewnut	1975	"	
	1980	"	
	1985	"	

7.2 Farm prices of important commodities (Month-wise)—(cont.)

Commodity	Year	Unit	Month						
			January	February	March	April	May	June	July
1	2	3	4	5	6	7	8	9	10
Centre: Muvattupuzha									
Paddy	1975	Qtl.	275.58	275.58	289.36	316.92	303.14	303.14	303.14
	1980	"	154.32	143.30	157.08	159.84	150.19	147.16	139.99
	1985	"	208.06	217.71	222.12	219.64	225.01	255.32	296.25
Coconut with husk	1975	100 No.	102.00	92.50	87.50	87.50	85.00	77.50	65.00
	1980	"	137.50	127.50	120.00	127.50	140.00	140.00	140.00
	1985	"	297.50	205.00	215.00	197.50	205.00	185.00	172.50
Banana	1975	"	22.00	22.00	22.00	22.00	22.00	25.00	25.00
	1980	"	29.00	29.50	33.00	35.00	60.00	65.00	60.00
	1985	"	41.00	40.00	42.50	42.50	53.00	72.50	77.50
Arecanut	1975	"	2.00	2.00	2.00	2.50
	1980	"	6.00	8.50	12.00	15.00	15.50	14.00	14.00
	1985	"	8.50	10.00	12.00	15.00	15.50	14.00	15.50
Pepper (Dry)	1975	Qtl.	1065.00	1327.50	1290.00	1305.00	1260.00	1265.00	1265.00
	1980	"	1345.00	1327.50	1290.00	1305.00	1260.00	1265.00	1265.00
	1985	"	1345.00	1327.50	1290.00	1305.00	1260.00	1265.00	1265.00
Tapioca	1975	Qtl.	30.00	30.00	30.00	30.00	30.00	30.00	30.00
	1980	"	40.00	40.00	40.00	40.00	40.00	40.00	40.00
	1985	"	45.00	45.00	45.00	45.00	45.00	45.00	40.00
Ginger (Dry)	1975	"	638.00	412.50	400.00	400.00	400.00	62.50	80.00
	1980	"	382.50	412.50	400.00	400.00	360.00	350.00	355.00
	1985	"	382.50	412.50	400.00	400.00	360.00	350.00	355.00
Cashewnut	1975	Qtl.	..	260.00	307.50	325.00	210.00
	1980	"	580.00	580.00	580.00
	1985	"

7.2 Farm prices of important commodities (Month-wise)—(cont.)

Commodity	Year	Unit	August	September	October	November	December	Average	Remarks
			11	12	13	14	15	16	17
Centre : Muvattupuzha									
—(cont.)									
Paddy	1975	Qtl.	227.35	206.69	199.80	206.69	206.69	259.51	
	1980	"	144.96	137.51	135.03	139.99	136.27	145.47	
	1985	"	299.69	285.91	285.91	268.69	268.69	254.42	
Coconut with husk	1975	100 No.	62.50	62.50	63.50	72.50	70.00	77.33	
	1980	"	140.00	150.00	150.00	175.00	145.00	141.04	
	1985	"	122.50	122.50	117.50	120.00	137.50	174.79	
Banana	1975	"	21.00	20.00	26.00	30.00	31.00	23.91	
	1980	"	62.50	50.00	42.50	40.00	35.00	45.08	
	1985	"	80.00	80.00	77.50	72.50	62.50	61.96	
Areca nut	1975	"	2.00	2.00	2.00	2.00	2.00	2.06	
	1980	"	5.00	5.00	6.00	6.50	4.75	5.97	
	1985	"	8.50	9.50	11.50	10.00	10.00	11.67	
Pepper (Dry)	1975	Qtl.	..	1200.00	1412.50	..	1050.00	1057.50	
	1980	"	1350.00	1250.00	1257.27	
	1985	"	
Tapioca	1975	Qtl.	30.00	30.00	32.50	35.00	35.00	31.04	
	1980	"	40.00	42.50	40.00	37.50	27.00	38.70	
	1985	"	77.50	77.50	70.00	70.00	70.50	61.04	
Ginger (Dry)	1975	"	..	400.00	522.50	475.00	625.00	681.50	
	1980	"	425.68	
	1985	"	
Cashewnut	1975	Qtl.	275.63	
	1980	"	580.00	
	1985	"	

7. 2 Farm prices of important commodities (Month-wise) (cont.)

Commodity	Year	Unit	January	February	March	April	May	June	July
1	2	3	4	5	6	7	8	9	10
Centre: Kunnathunad									
Paddy	1975	Qtl.	275.58	282.47	310.03	296.25	275.58	310.03	275.58
	1980	"	137.79	137.79	137.79	141.23	141.23	146.47	163.35
	1985	"	223.50	234.24	234.24	226.66	226.66	226.66	241.13
Coconut with husk	1975	100 Nos.	115.00	107.50	100.00	90.00	82.50	75.00	65.00
	1980	"	140.00	137.50	131.00	145.00	155.00	155.00	155.00
	1985	"	312.50	250.00	225.00	212.50	180.00	175.00	172.50
Banana	1975	"	26.00	26.50	26.50	27.50	31.00	33.50	30.00
	1980	"	52.50	57.50	57.50	52.50	40.00	35.00	32.50
	1985	"	3.00	3.25	3.00	5.00	7.00	57.50	65.00
Arceanut	1975	"	5.25	4.63	7.25	10.00	12.00	4.50	5.00
	1980	"	10.00	11.00	12.50	13.00	11.50	12.75	6.50
	1985	"	10.00	11.00	12.50	13.00	11.50	12.50	10.00
Pepper (Dry)	1975	Qtl.	1325.00	1335.00	1350.00
	1980	"	2875.00	2950.00	3450.00	4125.00	3850.00	4010.00	3875.00
	1985	"	30.00	30.00	32.50	35.00	37.50	32.50	30.00
Tapioca	1975	"	40.00	40.00	40.00	40.00	45.00	42.00	37.50
	1980	"	45.00	45.00	50.00	60.00
	1985	"
Ginger (Dry)	1975	"	400.00	460.00	430.00
	1980	"	1650.00	1550.00	1612.50	2075.00	1825.00	2075.00	1900.00
	1985	"	..	265.00	297.50	310.00	217.50
Cashewnut	1975	"	560.00	580.00	580.00	580.00	..
	1980	"	..	750.00	775.00	812.50	850.00
	1985	"

7. 2 Farm prices of important commodities (Month wise)—(cont.)

Commodity	Year	Unit	August	September	October	November	December	Average	Remarks
Centre—Kannathumad									
—(cont)									
Paddy	1975	Qtl.	227.35	189.46	189.46	213.57	220.46	255.49	
	1980	"	165.35	148.12	144.68	144.68	155.01	147.12	
	1985	"	234.24	234.24	225.01	240.03	264.56	234.26	
Coconut with husk	1975	100 Nos.	65.00	65.00	70.00	87.50	100.00	85.13	
	1980	"	150.00	150.00	150.00	160.00	130.00	146.54	
	1985	"	150.00	150.00	165.00	150.00	145.00	190.63	
Banana	1975	"	30.50	28.00	28.00	30.00	30.00	28.92	
	1980	"	30.00	30.00	30.00	30.00	30.00	32.19	
	1985	"	65.00	55.00	45.00	45.00	47.50	54.38	
Areca nut	1975	"	4.05	3.25	3.00	3.25	3.40	4.01	
	1980	"	5.00	4.50	5.00	5.25	5.25	6.95	
	1985	"	10.00	9.50	10.00	10.00	11.00	10.92	
Pepper (Dry)	1975	Qtl.	1000.00	1000.00	
	1980	"	1336.67	
	1985	"	3475.00	3775.00	4025.00	4100.00	3925.00	3702.92	
Tapioca	1975	Qtl.	30.00	30.00	30.00	35.00	32.50	32.08	
	1980	"	30.00	30.00	30.00	30.00	36.25	30.00	
	1985	"	70.00	70.00	67.50	70.00	90.00	63.06	
Ginger (Dry)	1975	Qtl.	
	1980	"	..	450.00	450.00	..	440.00	438.33	
	1985	"	1700.00	1450.00	1000.00	1298.75	
Cashewnut	1975	"	272.50	
	1980	"	575.00	
	1985	"	796.88	

7.2 Farm prices of important commodities (Month-wise) (cont.)

Commodity	Year	Unit	1	2	3	4	5	6	7	8	9	10
Centre: Always												
Paddy	1975	Qtl.		246.37			275.58	296.25	303.14	282.47	261.80	241.13
	1980	"		129.25			129.25	130.90	137.79	134.35	130.90	141.23
	1985	"		172.51			197.59	218.53	230.80	237.69	241.13	241.13
Coconut with husk	1975	"		100.00			97.50	80.00	75.00	75.00	75.00	65.00
	1980	"		120.00			120.00	120.00	127.50	135.00	142.50	155.00
	1985	"		312.50			275.00	250.00	200.00	200.00	195.00	195.00
Arccanut	1975	100 Nos.		3.00			3.00	3.00	3.00	3.00	4.50	5.00
	1980	"		7.00			7.25	7.75	10.00	10.00	9.50	6.50
	1985	"		10.00			12.50	18.00	20.00	25.00	25.00	30.00
Banana	1975	"		19.00			22.50	25.00	27.50	30.00	35.00	37.50
	1980	"		37.50			35.00	35.00	35.00	35.00	37.50	37.50
	1985	"		55.00			55.00	55.00	50.00	60.00	60.00	60.00
Tapioca	1975	Qtl.		30.00			30.00	30.00	30.00	30.00	30.00	30.00
	1980	"		33.50			32.00	35.00	35.00	35.00	35.00	35.00
	1985	"		45.00			47.50	60.00	60.00	60.00	60.00	60.00
Pepper (Dry)	1975	"		1400.00			1327.50	1300.00	1285.00	1225.00	1260.00	1250.00
	1980	"	
	1985	"	
Ginger (Dry)	1975	"		475.00			452.50	430.00	405.00	370.00	350.00	350.00
	1980	"	
	1985	"	
Cashewnut	1975	"		275.00	285.00	270.00
	1980	"	
	1985	"	

7.1 Farm prices of important commodities (Month-wise)—(cont.)

Commodity	Year	Unit	August	September	October	November	December	Average	Remarks
Centre: Always—(cont.)									
Paddy	1975	Qtl.	213.57	186.02	158.46	172.24	186.02	235.25	
	1980	"	141.23	128.97	137.79	137.79	137.79	134.77	
	1985	"	241.13	254.91	248.02	248.02	248.02	231.62	
Coconut with husk	1975	"	67.50	70.00	75.00	80.00	82.50	78.54	
	1980	"	160.00	160.00	160.00	162.50	152.50	142.92	
	1985	"	195.00	165.00	145.00	155.00	167.50	204.58	
Areca nut	1975	100 Nos.	4.25	3.63	3.38	3.00	3.10	3.49	
	1980	"	5.25	5.50	5.75	6.50	5.25	7.19	
	1985	"	12.00	12.00	11.00	10.00	10.00	14.28	
Banana	1975	"	23.50	23.50	25.00	25.00	25.00	25.92	
	1980	"	36.25	33.50	33.50	35.00	35.00	35.48	
	1985	"	55.00	56.25	
Tapioca	1975	Qtl.	30.00	30.00	30.00	30.00	30.00	30.00	
	1980	"	38.00	37.00	37.00	36.00	35.00	35.29	
	1985	"	60.00	80.00	80.00	85.00	90.00	65.63	
Pepper (Dry)	1975	"	1275.00	1300.00	1255.00	1245.00	1200.00	1276.88	
	1980	"	
	1985	"	
Ginger (Dry)	1975	"	340.00	345.00	342.50	325.00	300.00	373.75	
	1980	"	
	1985	"	
Cashewnut	1975	"	276.67	
	1980	"	
	1985	"	

7.2 Farm prices of important commodities (Month-wise)—(cont.)

Commodity	Year	Unit	January	February	March	April	May	June	July
1	2	3	4	5	6	7	8	9	10
Centre: Kothamangalam									
—(cont.)									
Paddy	1975	Qtl.	139.58	141.22	158.46	158.46	144.68	144.68	155.01
	1980		192.91	213.57	220.46	220.46	220.46	258.36	248.02
	1985	100 Nos.							
	1975	"	125.00	130.00	130.00	130.00	132.50	135.00	135.00
	1980	"	325.00	235.00	240.00	217.50	207.50	162.50	167.50
	1985	"							
	1975	"	5.00	5.00	5.00	5.00	6.00	8.00	6.50
	1980	"	8.50	8.50	10.50	12.00	8.50	10.50	7.50
	1985	"							
	1975	"	35.00	35.00	35.00	35.00	35.00	35.00	35.00
	1980	"	40.00	40.00	40.00	40.00	40.00	..	60.00
	1985	"							
	1975	Qtl.	1400.00	1350.00	1287.50	1300.00
	1980	"	2700.00	3000.00	3537.50	..	3700.00
	1985	"							
	1975	"	465.00	447.50	387.50	387.50
	1980	"	1750.00	1620.00	1580.00	..	1700.00
	1985	"							
	1975	"	..	580.00	580.00	580.00	580.00	580.00	..
	1980	"	..	600.00	825.00	825.00	825.00
	1985	"	..						
	1975	"	40.00	40.00	40.00	40.00	40.00	40.00	40.00
	1980	"	40.00	40.00	40.00	40.00	40.00	40.00	40.00
	1985	"							
	1975	"							
	1980	"							
	1985	"							
	1975	"							
	1980	"							
	1985	"							
	1975	"							
	1980	"							
	1985	"							
	1975	"							
	1980	"							
	1985	"							
	1975	"							
	1980	"							
	1985	"							
	1975	"							
	1980	"							
	1985	"							
	1975	"							
	1980	"							
	1985	"							
	1975	"							
	1980	"							
	1985	"							
	1975	"							
	1980	"							
	1985	"							
	1975	"							
	1980	"							
	1985	"							
	1975	"							
	1980	"							
	1985	"							
	1975	"							
	1980	"							
	1985	"							
	1975	"							
	1980	"							
	1985	"							
	1975	"							
	1980	"							
	1985	"							
	1975	"							
	1980	"							
	1985	"							
	1975	"							
	1980	"							
	1985	"							
	1975	"							
	1980	"							
	1985	"							
	1975	"							
	1980	"							
	1985	"							
	1975	"							
	1980	"							
	1985	"							
	1975	"							
	1980	"							
	1985	"							
	1975	"							
	1980	"							
	1985	"							
	1975	"							
	1980	"							
	1985	"							
	1975	"							
	1980	"							
	1985	"							
	1975	"							
	1980	"							
	1985	"							
	1975	"							
	1980	"							
	1985	"							
	1975	"							
	1980	"							
	1985	"							
	1975	"							
	1980	"							
	1985	"							
	1975	"							
	1980	"							
	1985	"							
	1975	"							
	1980	"							
	1985	"							
	1975	"							
	1980	"							
	1985	"							
	1975	"							
	1980	"							
	1985	"							
	1975	"							
	1980	"							
	1985	"							
	1975	"							
	1980	"							
	1985	"							
	1975	"							
	1980	"							
	1985	"							
	1975	"							
	1980	"							
	1985	"							
	1975	"							
	1980	"							
	1985	"							
	1975	"							
	1980	"							
	1985	"							
	1975	"							
	1980	"							
	1985	"							
	1975	"							
	1980	"							
	1985	"							
	1975	"							
	1980	"							
	1985	"							
	1975	"							
	1980	"							
	1985	"							
	1975	"							
	1980	"							
	1985	"							
	1975	"							
	1980	"							
	1985	"							
	1975	"							
	1980	"							
	1985	"							
	1975	"							
	1980	"							
	1985	"							
	1975	"							
	1980	"							
	1985	"							
	1975	"							
	1980	"							
	1985	"							
	1975	"							
	1980	"							
	1985	"							
	1975	"							
	1980	"							
	1985	"							
	1975	"							
	1980	"							
	1985	"							
	1975	"							
	1980	"							
	1985	"							
	1975	"							
	1980	"							
	1985	"							
	1975	"							

7.2 Farm prices of important commodities (Month-wise)—(cont.)

83

Commodity	Year	Unit	August	September	October	November	December	Average	Remarks
			11	12	13	14	15	16	17
Centre: Kothamangalam									
—(cont.)									
Paddy	1975	Qtl.	165.35	168.79	141.23	158.46	168.79	153.73	
	1980	"	241.13	220.46	237.69	253.26	258.36	232.10	
Coconut with husk	1975	"	142.50	150.00	160.00	161.25	147.50	139.90	
	1980	"	145.00	130.00	140.00	150.00	147.50	190.63	
Areca nut	1975	"	4.50	3.50	4.25	4.88	5.00	5.22	
	1980	"	6.50	7.75	8.00	6.50	7.50	8.52	
Banana	1975	"	35.00	34.00	35.00	35.00	29.00	34.42	
	1980	"	72.50	77.50	67.50	50.00	50.00	52.50	
Pepper (Dry)	1975	Qtl.	1150.00	1297.50	
	1980	"	3850.00	3357.50	
Ginger (Dry)	1975	"	421.88	
	1980	"	925.00	1515.00	
Cashewnut	1975	"	580.00	
	1980	"	768.75	
Tapioca	1975	"	37.50	33.75	32.50	32.50	32.50	37.40	
	1980	"	65.00	75.00	80.00	85.00	90.00	58.54	
	1985	"	

7.3 Wholesale Price of important commodities (Centre-wise)

Sl. No.	Commodity	Unit	Average Price		
			1975	1980	1985
1	2	3	4	5	6
Ernakulam					
1	Rice (Matta)	.. Qtl.	NA	227.15	375.48
2	Copra	.. "	545.41	996.32	1314.42
3	Rubber	.. "	NA	NA	NA
4	Banana (Ripe)	.. 1000 Nos.	286.44	377.63	568.27
5	Arecanut (Ripe)	.. "	28.97	53.52	116.08
6	Tapioca (Raw)	.. Qtl.	39.23	53.98	78.08
7	Coconut Oil	.. "	886.08	1549.03	2080.19
8	Coconut (with Husk)	.. 1000 Nos.	881.29	1456.34	2091.25

7.3 Wholesale Price of important commodities (Centre-wise)—(cont.)

Sl. No.	Commodity	Unit	Average Price		
			1975	1980	1985
1	2	3	4	5	6
Cochin					
1	Rice (Matta)	.. Qtls.	NA	NA	NA
2	Copra	.. "	546.09	975.93	1305.81
3	Rubber	.. "	790.40	1129.06	1614.73
4	Pepper (Dry)	.. "	1140.71	1339.90	3817.29
5	Arecanut (Dry)	.. "	577.33	1154.31	2418.85
6	Ginger (Dry)	.. "	707.73	435.85	1661.88
7	Coconut Oil	.. "	847.72	1510.74	1990.40
8	Coconut (with husk)	.. 1000 Nos.	751.48	1366.44	1857.73

7-4 Wholesale prices of important commodities (Month-wise)

Serial number	Commodity	Year	Unit	Average	January	February	March	April	May	June
1	2	3	4	5	6	7	8	9	10	11
	Ernakulam									
1	Rice (Matta)	1975 1980 1985	Qtl.	227.15 375.48 545.41	222.50 338.75 705.00	219.00 340.00 628.75	215.00 338.20 585.50	223.75 345.00 570.00	225.00 358.00 538.00	228.75 401.75 500.00
2	Copra	1975 1980 1985	"	996.32 1314.42	846.25 2190.00	874.00 1721.25	818.75 1555.00	863.13 1406.25	916.60 1284.00	972.50 1178.75
3	Banana (Ripe)	1975 1980	1000Nos.	286.44 377.63	261.00 345.00	260.00 350.00	318.75 310.00	218.75 277.50	342.00 356.00	343.75 450.00
4	Areca nut (Ripe)	1975 1980	"	568.27 28.97	550.00 23.80	536.25 25.00	480.00 25.00	387.50 32.50	525.00 42.00	587.50 28.75
5	Tapioca (Raw)	1975 1980	Qtl.	116.08 39.23	92.50 32.40	97.50 35.00	113.00 38.75	128.75 40.00	127.50 43.25	123.75 40.00
6	Coconut oil	1975 1980	"	886.08 1549.03	85.00 1166.00	90.00 1047.50	83.33 951.25	53.00 60.00	55.00 73.33	55.00 70.00
7	Coconut (with husk)	1975 1980	1000Nos.	881.29 1456.34	1080.00 1343.75	967.50 1369.00	930.00 1283.75	930.00 1368.75	899.00 1440.00	856.25 1518.75
		1985	"	2091.25	..	2712.50

7-4 Wholesale prices of important commodities (Month-wise) — (cont.)

Serial number	Commodity	Year	Unit	12	13	14	15	16	17	18	Remarks
Ernakulam (—(cont.)—)											
1	Rice, (Matta)	1975	Qil.	232.50	244.00	233.75	219.00	227.50	235.00	235.00	
		1980		405.00	413.25	403.75	388.75	387.00	386.25	386.25	
		1985		445.63	467.00	487.50	505.00	565.00	547.50	547.50	
2	Copra	1975	"	1076.25	1047.00	1076.25	1137.60	1223.75	1103.75	1103.75	
		1980		1190.00	1085.00	1056.25	1102.50	1029.00	1035.00	1035.00	
		1985	1000Nos.	275.00	268.00	256.25	300.00	300.00	293.75	293.75	
3	Banana (Ripe)	1980	"	425.00	420.00	382.50	428.00	417.50	370.00	370.00	
		1985	"	650.00	750.00	627.40	571.25	575.00	579.25	579.25	
4	Arccanut (Ripe)	1975	"	25.63	30.00	29.75	31.40	28.75	25.00	25.00	
		1980	"	45.00	46.25	49.38	49.00	47.50	50.63	50.63	
		1985	"	112.50	116.25	123.75	125.00	120.00	112.50	112.50	
5	Tapioca (Raw)	1975	Qil.	37.50	37.50	40.00	45.80	41.25	39.25	39.25	
		1980	"	53.75	50.00	50.00	56.25	58.75	50.00	50.00	
		1985	"	70.00	70.00	75.03	76.25	84.00	100.00	100.00	
6	Coconut oil	1975	"	743.75	767.00	750.25	814.50	910.00	852.50	852.50	
		1980	"	1670.00	1625.00	1683.75	1751.00	1870.00	1703.75	1703.75	
		1985	"	1841.25	1707.50	1638.75	1670.00	1582.00	1577.50	1577.50	
7	Coconut (with husk)	1975	1000Nos.	713.75	768.00	816.25	826.00	883.75	905.00	905.00	
		1980	"	1683.75	1643.00	1643.00	1643.00	1470.00	1470.00	1470.00	
		1985	"	

7-4 Wholesale prices of important commodities (Month-wise)—(cont.)

Serial number	Commodity	Year	Unit	Average	January	February	March	April	May	June
1	2	3	4	5	6	7	8	9	10	11
	Cochin									
1	Copra	1975	Qtl.	546.09	696.25	625.63	591.88	573.75	538.50	501.25
		1980	"	975.93	844.38	883.00	814.38	865.63	916.50	975.00
		1985	"	1305.81	1130.00	1723.75	1520.00	1391.25	1269.00	1177.00
2	Rubber	1975	"	790.40	894.00	863.75	826.25	836.25	794.00	810.00
		1980	"	1129.06	1013.75	982.00	1013.75	1025.00	1031.00	1057.50
		1985	"	1614.73	1461.25	1488.75	1524.00	1583.75	1653.00	1665.00
3	Pepper	1975	"	1140.71	1110.20	1055.75	1007.50	1073.75	1072.00	1117.25
		1980	"	1339.90	1441.25	1363.00	1308.75	1306.25	1274.00	1300.00
		1985	"	3817.29	2831.25	3106.25	3465.00	4125.00	3900.00	4200.00
4	Ginger (Dry)	1975	"	707.73	660.00	612.50	597.50	630.00	647.00	625.00
		1980	"	435.85	482.50	461.00	435.00	425.00	393.00	365.00
		1985	"	1661.88	1912.50	1612.50	1620.00	2037.50	1960.00	2112.50
5	Arcanuit (Dry)	1975	"	577.33	531.00	540.00	527.50	582.50	590.00	600.00
		1980	"	1154.31	1050.00	1120.00	1140.00	1122.50	1194.00	1160.00
		1985	"	2418.85	1943.75	2062.50	2380.00	2762.50	2640.00	2712.50
6	Coconut oil	1975	"	847.72	1095.00	961.75	905.00	883.75	837.50	796.25
		1980	"	1510.74	1285.63	1354.00	1235.00	1321.25	1395.00	1476.25
		1985	"	1990.40	3226.25	2600.00	2370.00	2145.00	1937.00	1795.00
7	Coconut (with husk)	1975	1000Nos.	751.48	..	912.50	825.00	800.00	775.00	743.75
		1980	"	1366.44	1146.25	1176.00	1162.50	1171.25	1235.00	1291.25
		1985	"	1857.73	2912.50	2337.50	2150.00	1975.00	1810.00	1637.50

7-4 Wholesale prices of important commodities (Month-wise)—(cont.)

Serial number	Commodity	Year	Unit	July	August	September	October	November	December	Remarks
	Cochin (cont.)									
	Copra	1975	Qtl.	451.88	477.50	490.00	507.00	569.38	590.00	
		1980	"	1066.25	1050.50	1075.63	1139.00	NT	1105.00	
		1985	"	1180.00	1068.75	1045.00	1095.00	1027.00	1045.00	
2	Rubber	1975	"	798.75	768.50	762.50	699.50	720.00	711.25	
		1980	"	1190.00	1258.00	1293.75	1264.00	1182.50	1237.50	
		1985	"	1687.50	1692.50	1690.00	1682.50	1631.00	1617.50	
3	Pepper	1975	"	1146.25	1128.80	1167.00	1262.00	1288.75	1259.25	
		1980	"	1258.75	1212.00	1281.25	1441.00	1510.05	1382.50	
		1985	"	4018.75	3687.50	3831.25	4063.75	4290.00	4268.75	
		1975	"	627.50	657.00	822.50	870.00	937.50	806.25	
4	Ginger (Dry)	1980	"	353.75	342.00	397.50	523.00	540.00	512.50	
		1985	"	1981.25	1693.75	1412.50	1412.50	1150.00	1037.50	
		1975	"	607.50	606.00	627.50	596.00	580.00	540.00	
5	Arecanut (Dry)	1980	"	1160.00	1116.00	1045.00	1208.00	1257.50	1338.75	
		1985	"	2662.50	2587.50	2637.50	2400.00	2000.00	2237.50	
		1975	"	716.88	736.50	780.00	775.00	875.00	810.00	
6	Coconut oil	1980	"	1626.25	1599.00	1647.50	1724.00	1815.00	1650.00	
		1985	"	1798.75	1653.75	1607.50	1665.00	1544.00	1542.50	
		1975	1000Nos.	643.75	660.00	681.25	675.00	800.00	750.00	
7	Coconut (with hunk)	1980	"	1440.00	1444.00	1500.00	1571.00	1675.00	1585.00	
		1985	"	1712.50	1500.00	1475.00	1512.50	1412.50	1585.00	

7.5 Average daily Employment in plantations

<i>Plantation</i>		1980-81	1983-84
<i>Rubber Plantation.—</i>			
Garden labour	..	8,935	9,400
Permanent outside labour	..	400	400
Temporary outside labour
Total	..	<u>9,335</u>	<u>9,800</u>
<i>Coffee Plantation.—</i>			
Garden labour permanent	..	34	38
Outside labour permanent	..	12	14
Outside temporary	..	1,370	1,386
Total	..	<u>1,416</u>	<u>1,438</u>
<i>Tea Plantation.—</i>			
Garden labour in field
Garden labour in factory	..	40	40
Outside labour in field
Outside labour in factory	..	1,400	1,426
Total	..	<u>1,440</u>	<u>1,466</u>

Source : Inspector of Plantations, Alwaye.

7-6 Consumer price indices for the working class

Centre	Year	Month												
		Average	January	February	March	April	May	June	July	August	September	October	November	December
1	2	3	4	5	6	7	8	9	10	11	12	13	14	15
Ernakulam	1976	161.42	169	162	161	162	160	160	164	161	159	159	160	160
	1980	196.0	184	185	185	186	187	191	202	204	206	206	207	208
	1984	293.1	280	282	282	285	288	294	300	301	301	301	301	302
	1985	303.1	302	301	298	298	301	305	308	308	305	303	303	305

7.7 Average daily wage rates of paddy field labour

<i>Category of labour</i>	<i>Sex</i>	<i>(in Rs.)</i>		
		<i>1983-84</i>	<i>1984-85</i>	<i>1985-86</i>
(1)	(2)	(3)	(4)	(5)
Bunding	Men	15.75	26.90	26.50
Weeding	Women	11.35	13.10	15.10

Source: D.E.S.

7.3 Average daily wage rates of workers in the construction sector 1982-83 to 1984-85 in Ernakulam District

(in Rs.)

Year	District	Skilled workers										Unskilled workers		
		Carpenter		Mason		Painter		Sawer	Plumber	Electrical Wireman	Men	Women	Children	
		I Class	II Class	I Class	II Class	I Class	II Class							
1	2	3	4	5	6	7	8	9	10	11	12	13	14	
	(Urban)													
1982-83	Ernakulam	28.20	26.27	28.12	26.22	25.50	22.88	..	26.25	26.25	16.00	12.00	11.16	
1983-84	"	34.38	32.18	34.38	32.05	29.75	28.67	30.00	29.75	29.67	19.50	13.08	12.33	
1984-85	"	36.25	33.05	36.25	33.05	31.25	29.39	..	31.45	31.25	21.25	14.57	12.77	
	(Rural)													
1982-83	Ernakulam	27.22	25.42	27.92	25.42	25.45	22.78	..	29.00	25.78	16.00	12.00	11.11	
1983-84	"	34.17	31.57	34.17	31.67	29.95	27.86	32.00	30.67	29.50	19.50	13.42	12.00	
1984-85	"	36.25	32.69	36.25	32.69	31.32	28.84	..	31.35	31.30	21.25	14.36	12.50	

7.9 Average monthly wage rates of Shop Assistants in the trade and commerce sector 1982-83 to 1984-85

(Urban)

(in Rs.)

<i>N.I.C.</i>	1982-83	1983-84	1984-85
(1)	(2)	(3)	(4)
Wholesale trade:			
60	414	420	454
61	529	563	733
62	526
63	554	559	600
64	610	610	842
Retail trade:			
65	420	467	536
66	908	923	1,158
67	395	425	501
68	344	364	465
69	555	585	664

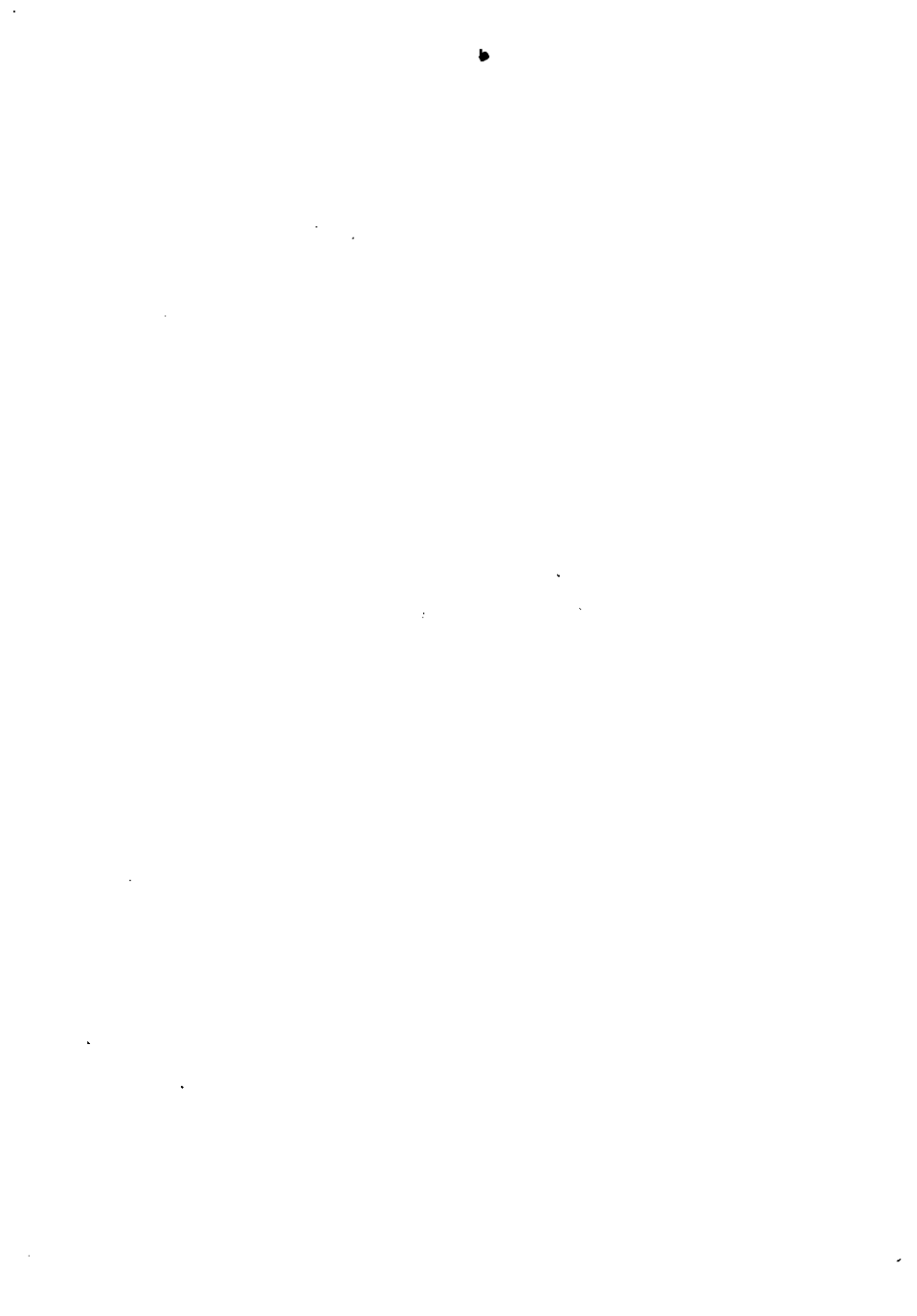
N.I.C. Code:

- Division-6 Wholesale and retail trade and restaurants and hotels.
- 60 Wholesale trade in food, textiles, live animals, beverage and intoxicants.
- 61 Wholesale trade in fuel, light, chemicals perfumery, ceramics and glasses.
- 62 Wholesale trade in wood, paper, other fabrics, skins and inedible oils.
- 63 Wholesale trade in all types of machinery, equipments including transport and electrical equipments.
- 64 Wholesale trade in miscellaneous manufacture, like furniture, rubber products, building materials, clock, eye-glasses, hardware and sanitary equipments, jewellery, precious metals etc.
- 65 Retail trade in food articles, beverage, tobacco and intoxicants.
- 66 Retail trade in textiles and readymade garments.
- 67 Retail trade in fuel and other household utilities and durables like firewood, kerosene, utensils, fancy stores, furniture, jewellery, footwear, electrical goods etc.
- 68 Retail trade in others like medical stores, books, stationery, building materials, transport equipment, petrol etc.
- 69 Retail trade—Restaurants and hotels, cafe, lodging places etc.



SECTION 8

MISCELLANEOUS



8.1 District income at current prices

<i>Year</i>	<i>(Rs. in lakhs)</i>			
	<i>Total income</i>		<i>Per capita income</i>	
	<i>District</i>	<i>State</i>	<i>District</i>	<i>State</i>
(1)	(2)	(3)	(4)	(5)
1976-71	14,232	125,843	665.00	596
1975-76	24,680	213,131	1,035.23	907.33
1980-81	43,964	349,887	1,742.00	1,382.00
1982-83	58,753	442,172	2,256.00	1,689.00
1983-84(*)	68,242	520,341	2,570.00	1,951.00

(*) Provisional

8.2 District income by broad sector at current prices

(Rs. in lakhs)

Serial number	Sector	1975-76		1980-81		1982-83		1983-84	
		District	State	District	State	District	State	District	State
1	2	3	4	5	6	7	8	9	10
1	Agricultural, Forestry, Fishing and mining (Primary)	6,734	1,03,536	12,799	1,45,043	16,074	1,71,949	18,768	2,10,515
	Percentage to total	27.29	48.58	29.1	41.4	27.4	38.9	27.5	40.5
2	Manufacturing continuation Electricity and water supply (Secondary)	8,400	37,800	15,398	75,515	19,808	95,769	22,066	1,05,640
	Percentage to total	34.03	17.74	35.0	21.6	33.7	21.7	32.3	20.3
3	Tertiary sector	9,546	71,795	15,767	1,29,929	22,871	1,74,454	27,408	2,04,186
	Percentage to total	38.68	33.68	35.9	37.0	38.9	39.4	40.2	39.2
	Total	24,680	2,13,131	43,964	3,49,887	58,753	4,42,172	68,242.0	5,20,341

8.3 Small Savings Collection

Type	1980-81		1983-84	
	Gross (2)	Net (3)	Gross (4)	Net (5)
1. National Savings Certificates ..	17.50	(—) 26.96	190.53	178.12
2. Post Office Savings Bank ..	342.19	20.04	428.65	54.19
3. Cumulative Time Deposit Account..	51.63	27.90	75.18	21.48
4. Post Office Time Deposit ..	258.80	36.22	253.19	(—) 65.75
5. Post Office Recurring Deposit ..	84.22	32.78	154.32	59.30
6. National Development Bond ..	0.90	0.90
7. Public Provident Fund Scheme ..	27.11	27.11	48.64	48.63
Total ..	782.35	117.99	1,150.51	295.98

Source: Office of the Regional Director, National Savings (Government of India), Kerala

8.4 Classification of persons assessed for Agricultural Income Tax

Category	1978-79	1980-81	1984-85
(1)	(2)	(3)	(4)
1. Individuals ..	1,938	2,611	1,764
2. Registered Companies ..	45	64	52
3. Registered Firms ..	7	4	4
4. Unregistered Firms
5. Hindu undivided families ..	44	5	..
6. Tenants in Common ..	53	103	45
7. Association of persons
Total ..	2087	2787	1865

Source: A.I.T. and S.T. Offices

8.5 Revenue from Agricultural Income Tax

Kind of tax	(Rs. in lakhs)		
	1978-79	1980-81	1984-85
(1)	(2)	(3)	(4)
1. Agricultural Income Tax ..	15.18	19.34	20.91
2. " Super Tax
3. Surcharge ..	0.66	1.35	0.92
4. Penalty ..	0.05	0.08	0.06
Total	15.89	20.77	21.89

Source: A.I.T. Offices

8.6 Sales Tax assessees and registered dealers

Category	(Number)			
	1973-74	1981-82	1983-84	1984-85
(1)	(2)	(3)	(4)	(5)
1. Number of assessees under rule 13, 14 and 15 ..	3490	3074
2. Under rule 21 ..	1401	6756	9208	10424
3. Total number of assessees ..	4891	9830	9208	10424
4. Total number of registered dealers under G.S.T. ..	5410	11886	9460	10704
5. ,, under C.S.T.	3676	3123	3487

Source: A.I.T. and S.T. Offices

8.7 Demand, collection, remission and balance under general sales tax

Item	(Rs. in lakhs)			
	1973-74	1981-82	1983-84	1984-85
(1)	(2)	(3)	(4)	(5)
1. Demand ..	2,175.88	15,208.46	19,987.30	24,316.89
2. Collection ..	1,961.52	13,194.06	16,716.45	18,680.72
3. Remission ..	48.51	56.69	493.56	165.76
4. Balance ..	165.85	1,957.71	2,777.29	5,470.41

Source: A.I.T. and S.T. Offices

8.8 Revenue from general sales tax

Kind of tax	(Rs. in lakhs)			
	1973-74	1981-82	1983-84	1984-85
(1)	(2)	(3)	(4)	(5)
1. Sales tax ..	1,519.66	12,333.68	15,596.18	17,606.01
2. Surcharge ..	74.57	852.06	1,120.27	1,074.08
3. Registration fee ..	0.57	1.38	6.36	6.13
4. Permit fee ..	0.01	0.01	0.23	0.02
5. Miscellaneous ..	1.88	6.09	19.16	32.82
Total ..	1,596.69	13,193.22	16,742.20	18,719.66

Source: A.I.T. and S.T. Offices

8.9 Agricultural income tax and super tax demanded on different agricultural produce

Crops	1978-79	1980-81	1984-85
(1)	(2)	(3)	(4)
1. Rubber ..	4.29	13.40	13.72
2. Cardamom ..	2.01	3.53	0.76
3. Coconut ..	5.16	2.37	3.47
4. Others ..	6.43	1.16	3.51
Total ..	17.89	20.46	21.46

Source: A.I.T. Offices

3.16 Demand, collection and balance of land taxes

(Rs. in lakhs)

Serial number	Kind of tax	1970-71			1980-81			1984-85		
		Demand	Collection	Balance	Demand	Collection	Balance	Demand	Collection	Balance
1	2	3	4	5	6	7	8	9	10	11
1	Basic Tax	3.12	3.12	..	9.04	9.04	..	23.02	23.02	..
2	Land Revenue Other than Basic tax	2.66	2.42	0.24	10.61	5.17	5.44	18.26	17.66	0.60
3	Plantation	1.05	0.98	0.07	3.22	2.97	0.25	2.42	2.42	..
4	Additional tax	1.50	1.25	0.25	23.04	18.75	4.27	18.25	18.24	0.01
5	Irrigation tax	7.96	6.95	1.01	10.77	10.66	0.11
6	Others	114.57	90.58	23.99	677.55	665.29	12.26
	R.R. Items
	Total	8.33	7.77	0.56	168.42	133.46	34.96	750.27	737.29	12.98

Source: Collectorate

8.11 Number of sub-registry offices

Year	No. of offices
1970-71	18
1980-81	20
1984-85	20

8.12 Number of documents registered

(Rs. in lakhs)

Type of documents	1970-71		1980-81		1984-85	
	Number	Value	Number	Value	Number	Value
1	2	3	4	5	6	7
Mortgage ..	11372	373	17822	108	17255	4608
Sale deed ..	23846	799	42792	126	44640	3840
Wills ..	558	..	1228	..	1669	..
Money bonds ..	198	6	170	1	515	67
Other cases ..	20534	507	15558	242	23580	1288
Total ..	56508	1685	77570	477	87659	9203

Source: Registration department.

8.13 Taluk-wise details of trees tapped and tree-tax collected

(Rs. in lakhs)

Serial number	Taluk	1970-71			1980-81			1984-85		
		Coconut trees tapped	Choondapana tapped	Tree tax collected	Coconut trees tapped	Choondapana tapped	Tree tax collected	Coconut trees tapped	Choondapana tapped	Tree tax collected
	2	3	4	5	6	7	8	9	10	11
1	Kanayannur	19959	350	4.13	10888	325	1.85	10958	316	1.85
2	Cochin	11326	..	2.27	5411	..	0.87	6440	..	1.03
3	Alwaye	12827	366	2.71	12689	370	2.15	13024	404	2.22
4	Parur	10532	..	2.11	7524	..	1.20	7724	..	1.24
5	Kunnathunad	3189	2928	1.81	3313	3039	1.50	3325	3045	1.51
6	Muvattupuzha	1850	7989	3.53	1438	3450	1.33	1799	3880	1.47
7	Kothamangalam	997	1143	0.53	1192	1166	0.56
	District total	59683	11533	16.56	42260	8327	9.43	44457	8811	9.88

8.14 Taluk-wise number of liquor shops

Serial number	Taluk	1970-71			1980-81			1984-85		
		Number of toddy shops	Number of arrack shops	Number of foreign liquor shops	Number of toddy shops	Number of arrack shops	Number of foreign liquor shops	Number of toddy shops	Number of arrack shops	Number of foreign liquor shops
1	2	3	4	5	6	7	8	9	10	11
1	Kanayannur	81	36	18	81	36	20	81	47	26
2	Cochin	48	30	6	48	30	7	49	47	8
3	Alwaye	51	20	3	51	20	3	55	35	3
4	Parur	44	20	..	44	20	..	44	29	1
5	Kunnathunad	51	20	1	51	20	2	51	33	2
6	Muvattupuzha	60	19	4	47	14	4	46	23	4
7	Kothamangalam	18	7	1	18	12	1
	District total	335	145	32	340	147	37	344	226	45

Source: Excise department

8.15 License fee collected on foreign liquor

Kind of fee (1)	1970-71 (2)	(Rs. in lakhs)	
		1980-81 (3)	1984-85 (4)
Restaurant License fee ..	0.88	18.50	115.50
License fee for the sale of foreign liquor in clubs ..	0.02	0.05	0.21

Source: Excise department

8-16 Taluk-wise details of rentals obtained in auction sale of abkari shops

(Rs. in lakhs)

Serial number	Taluk	1970-71			1980-81			1984-85		
		Toddy shops	Arrack shops	Foreign liquor shops	Toddy shops	Arrack shops	Foreign liquor shops	Toddy shops	Arrack shops	Foreign liquor shops
1	2	3	4	5	6	7	8	9	10	11
1	Kanyakannur	17.42	10.34	4.97	43.10	180.02	112.48	2.53	168.11	165.77
2	Cochin	7.45	7.82	1.14	22.03	90.02	27.36	0.60	99.57	37.78
3	Alwaye	18.03	9.25	1.24	10.36	73.97	20.54	0.21	11.31	23.96
4	Parur	4.76	3.90	..	0.25	59.43	..	0.31	116.48	2.05
5	Kunnathunad	15.42	7.32	0.43	24.52	51.86	12.07	25.45	101.03	13.60
6	Muvattupuzha	26.52	13.15	1.50	45.98	65.78	21.40	2.10	106.70	27.58
7	Kothamangalam	28.78	36.86	7.02	9.50	46.25	7.01
	Total	89.60	51.78	9.28	175.02	557.94	200.87	40.70	649.45	277.75

8.17 Income and expenditure of Panchayats

Item (1)	1975-76 (2)	(Rs. in lakhs)	
		1980-81 (3)	1984-85 (4)
1. Number of Panchayats ..	86.00	86.00	86.00
2. Income			
(a) Opening balance ..	40.00	138.78	152.17
(b) Receipts ..	119.96	334.62	368.48
(c) Total ..	159.96	478.40	520.65
3. Expenditure ..	103.98	205.90	365.05
4. Closing Balance ..	55.98	267.50	155.60

Source: District Panchayat Office, Ernakulam.

3-16 Income of Municipalities

(Rs. in lakhs)

Serial number	Municipality	1970-71			1980-81			1984-85			Total
		Municipal taxes and rates	Other receipts	Total	Municipal taxes and rates	Other receipts	Total	Municipal taxes and rates	Other receipts	Total	
1				5	6	7	8	9	10	11	
2	Gochin Corporation	80.44	20.11	100.55	NA	NA	463.10	NA	NA	732.70	
3	Alwaye Municipality	4.52	10.62	15.14	23.40	73.86	97.26	48.65	41.14	89.79	
4	Farur	3.54	2.21	5.75	15.47	8.71	24.18	29.03	8.61	37.64	
5	Angamaly	..	9.92	12.30	7.94	0.33	8.27	13.35	3.73	17.08	
6	Perumbavoor	2.38	15.84	12.15	27.99	24.81	21.44	46.25	
7	Kothamangalam	2.57	0.54	3.11	9.62	4.10	13.72	15.55	17.14	32.69	
8	Muvattupuzha	2.55	1.91	4.46	6.06	13.18	19.24	12.05	22.99	35.04	
9	Tripunithura	11.30	2.57	13.87	15.04	4.77	19.81	

Source: Municipality, Corporation of Cochin.

8-19 Expenditure of Municipalities

(Rs. in lakhs)

Serial number	Municipalities	1970-71			1980-81			1984-85			Total
		Capital expenditure	Current expenditure	Total	Capital expenditure	Current expenditure	Total	Capital expenditure	Current expenditure	Total	
1		3	4	5	6	7	8	9	10	11	
1	Cochin Corporation	36.59	55.99	92.58	1.89	32.29	454.11	23.88	50.54	728.03	
2	Always Municipality	1.40	11.49	12.89	10.83	14.30	34.18	14.64	21.70	74.42	
3	Parur	2.91	3.29	6.20	12.99	21.12	25.13	8.79	14.69	36.34	
4	Angamaly	7.82	4.31	12.13	7.73	18.57	34.11	26.66	35.30	23.42	
5	Perumbavoor	0.09	2.70	2.79	7.72	11.03	18.75	7.75	23.66	51.96	
6	Kothamangalam	8.38	2.48	10.28	12.76	12.83	24.47	31.41	
7	Muvattupuzha	28.72	12.17	40.89	3.51	21.27	37.36	
8	Trippunithura	24.79	

Source: Municipalities and Corporation of Cochin

8.20 Number and seating capacity of cinema houses and talkies in Panchayats

Seating capacity	No. of cinema houses and talkies			Taxes collected (Rupees in lakhs)		
	1975-76	1980-81	1984-85	1975-76	1980-81	1984-85
(1)	(2)	(3)	(4)	(5)	(6)	(7)
Permanent:						
Below 500	}	19	24	28
Between 500-1000						
Between 1000-1500						
1500 and above						
Sub total	19	24	28
Temporary:						
Below 500	}	56	77	74
Between 500-1000						
Between 1000-1500						
1500 and above						
Sub total	56	77	74
Grand total	75	101	102	11.15	18.27	25.31

Source: District Panchayat Office, Ernakulam

8.21 Offences reported and persons tried, convicted and acquitted for Case of offences

Serial number	Description of offences	No. of cases		No. of persons									
		Cases found to be true of offences reported		Tried		Convicted		Acquitted		PT			
		Ernakulam city 1984-85	Ernakulam rural 1984-85	Ernakulam city 1984-85	Ernakulam rural 1984-85	Ernakulam city 1984-85	Ernakulam rural 1984-85	Ernakulam city 1984-85	Ernakulam rural 1984-85	Ernakulam city 1984-85	Ernakulam rural 1984-85		
1	2	190	303	141	211	364	1118	256	16	108	1102	450	83
2	Rioting
3	Offences relating to coins
4	Offences relating to coins to bank notes	18	36	18	36	11	46	7	26	4	20	36	23
5	Murder
6	Culpable homicide not amounting to murder	1	..	1	3	..
7	Administering of stupefying drugs
8	Kidnapping and abduction	9	8	8	7	6	16	2	..	4	16	3	2
9	Dacoity	3	3	3	2	9	..	9	16	..
10	Robbery	15	15	7	12	11	..	10	..	1	..	2	..
11	Housebreaking and thefts	307	255	239	248	72	87	31	57	41	30	182	25
12	Cheating	57	62	28	32	2	18	2	17	..	1	23	9
13	Breach of trust	25	12	10	7	3	10	3	8	..	2	9	1
14	Thefts	284	249	192	216	67	109	49	73	18	36	144	7
	Other crimes	1015	2097	901	1592	774	1097	565	206	209	891	441	1041
	Total	1924	3045	1548	2368	1319	2501	994	403	385	2098	1309	1191

8.22 Police Stations and Outposts

<i>Year</i>	<i>No. of Police Stations</i>	<i>No. of Outposts</i>
1980-81 ..	34	8
1984-85 ..	43	3

Source: Police Department

8.23 Statement of serious crimes

<i>Nature of crime</i>	<i>1980-81</i>	<i>1984-85</i>
(1)	(2)	(3)
1. Rioting ..	724	493
2. Offences relating to coins ⁴
3. Offences relating to currency and Bank notes ..	6	5
4. Murder ..	42	54
5. Culpable homicide not amount- ing to murder	1
6. Administering of stupifying drugs
7. Kidnapping and abduction ..	11	17
8. Dacoity ..	12	6
9. Robbery ..	47	30
10. House breaking and thefts ..	801	562
11. Cheating ..	83	119
12. Breach of trust ..	56	37
13. Thefts ..	833	533
14. Other crimes ..	3435	3112
Total ..	7291	4969

Source: Police Department

8.24 Housing condition—1980

<i>House type</i>	<i>Number</i>	<i>Percentage to total</i>
(1)	(2)	(3)
Total houses ..	401457	100 00
Huts ..	83149	20.71
Old and dilapidated ..	12948	3.23
Pucca ..	305360	76.06
Electrified houses ..	140845	35.08
Houses experiencing scarcity for drinking water ..	174497	43.47
Houses with water sealed lava- tories ..	121238	30.20

Source: Survey on Housing and Employment—1980

8.25 Area and population of Panchayats in the District—1981

<i>Sl. No.</i>	<i>Name of block</i>	<i>Name of panchayat</i>	<i>Area</i>	<i>Population 1981</i>
(1)	(2)	(3)	(4)	(5)
1.	Alengad	Alengad ..	18.35	28944
		Eloor ..	21.95	52528
		Kadungalloor ..	18.06	26602
		Karumalloor ..	21.05	26091
2.	Angamaly	Ayyampuzha ..	24.55	19284
		Kalady ..	16.44	23181
		Kanjoor ..	14.32	18056
		Karukutty ..	33.55	25615
		Malayattoor- Neeleswaram ..	34.22	21163
		Manjapra ..	21.00	9857
		Mookannur ..	13.02	12648
		Sreemoolanagaram ..	14.41	19087
		Thuravoor ..	12.33	15801
3.	Edappally	Cheranelloor ..	10.59	18381
		Kadamakkudy ..	12.91	13696
		Kalamassery ..	27.00	43767
		Thrikkakara ..	27.46	38318
4.	Koovapady	Assamannur ..	21.27	14589
		Koovappady ..	43.97	46747
		Mudakkuzha ..	21.97	14280
		Rayamangalam ..	36.77	27271
		Vengoor ..	267.01	19287
5.	Kothaman- galam	Kovalangad ..	59.91	24084
		Keerampara ..	28.74	11650
		Kottappady ..	31.94	13987
		Nellikuzhy ..	27.61	24176
		Paingottoor ..	23.50	13446
		Pallarimangalam ..	15.82	9828
		Pindirana ..	25.76	14025
Pothanikkad ..	17.14	8878		
Varappetty ..	21.50	13385		

8-25 Area and population of Panchayats in the
District—1981—(cont.)

Sl. No.	Name of block	Name of panchayat	Area	Population 1981
(1)	(2)	(3)	(4)	(5)
6.	Mulanthuruthy	Amballur ..	22.59	19200
		Chottanikkara ..	12.68	13782
		Edakkattuvayal ..	26.27	15395
		Mulanthuruthy ..	21.47	19761
		Thiruvamkulam ..	10.49	15517
		Udayamperoor ..	24.86	25717
7.	Muvattupuzha	Arakkuzha ..	29.31	14627
		Avoly ..	18.60	13757
		Ayavana ..	29.47	16161
		Kalloorkad ..	24.40	12435
		Manjalloor ..	23.86	12730
		Marady ..	21.37	12460
		Paipra ..	32.18	27004
		Valakom ..	23.72	15493
8.	Palluruthy	Chellanam ..	17.60	29536
		Kumbalangi ..	15.77	22376
9.	Pampakuda	Elanji ..	29.48	16030
		Koothattukulam ..	23.18	15057
		Maneed ..	26.19	14432
		Palakkuzha ..	22.65	12051
		Pampakkuda ..	29.61	15662
		Piravom ..	29.36	24048
		Ramamangalam ..	23.88	13680
		Thirumarady ..	29.24	15596
10.	Parakkadavu	Chengamanad ..	15.15	22080
		Kunnukara ..	21.68	21053
		Nedumbassery ..	23.14	23936
		Parakkadavu ..	24.66	25150
		Puthenvelikkara ..	16.99	21319

**8.25 Area and population of Panchayats in the
District—1981—(cont.)**

<i>Sl. No.</i>	<i>Name of block</i>	<i>Name of panchayat</i>	<i>Area</i>	<i>Population 1981</i>
(1)	(2)	(3)	(4)	(5)
11.	Parur	Chendamangalam ..	10.83	25893
		Chittattukara ..	9.46	22695
		Ezhikkara ..	15.08	15516
		Kottuvally ..	21.00	30665
		Vadakkekara ..	11.44	29509
12.	Vadavukode	Aikkaranad ..	25.64	16244
		Kunnathunad ..	26.86	22409
		Mazhuvannur ..	49.11	25571
		Poothrikka ..	25.53	17208
		Thiruvaniyoor ..	21.91	19559
		Vadavucode- Puthencruz ..	36.88	23653
13.	Vazhakkulam	Choornikkara ..	11.01	23712
		Edathala ..	15.98	22826
		Keezhmad ..	17.79	23470
		Kizhakkambalam ..	31.57	24521
		Vazhakkulam ..	19.64	23934
		Vengola ..	35.64	29831
14.	Vypeen	Edavanakkad ..	11.24	18707
		Elamkunnappuzha ..	11.66	43911
		Kuzhippilly ..	7.73	10775
		Njarakkal ..	8.60	21672
		Nayarambalam ..	12.19	21726
		Mulavukad ..	19.27	21397
		Pallipuram ..	16.48	37187
15.	Vytila	Kumbalam ..	20.78	21678
		Maradu ..	12.35	28749

**8-26 Area and population of revenue villages
in the District—1981**

<i>Sl. No.</i>	<i>Taluk</i>	<i>Name of revenue village/town</i>	<i>Area</i>	<i>Population</i>
(1)	(2)	(3)	(4)	(5)
1.	Kanayannur	Kadamakkudy ..	12.91	13696
		Cheranalloor ..	10.59	18381
		(Portion)		
		Thiruvamkulam ..	10.49	15517
		Kureckad ..	5.30	6495
		Kumbalam ..	20.78	21678
		Manakunnam ..	24.86	25717
		Kanayannoor ..	7.38	7217
		Mulanthuruthy ..	21.47	19761
		Edakkattuvayal ..	18.07	10547
		Amballoor ..	10.82	10054
		Keccherry ..	5.06	4565
		Kulayattikkara ..	6.71	4581
		Kaippattur ..	8.20	4848
		Mulavukad (N.M.) ..	19.27	21397
		Kalamassery (N.M.) ..	27.00	43767
		Maradu (N.M.) ..	12.35	28749
		Thrikkakara (N.M.) ..	27.46	38318
		Thrippunithura ..		
		Town	18.69	43646
		Cochin City ..	94.88	513249
2.	Cochin	Kuzhuppilly ..	12.69	20896
		Pallipuram ..	11.52	27066
		Edavanakad ..	11.24	18707
		Nayarambalam ..	12.19	21726
		Njarakkal ..	8.60	21672
		Elamkunnappuzha ..		
		(Portion)	11.66	43911
		Kumbalangi ..	21.14	33631
		Chellanam ..	8.11	11568
		Cheriakadavu ..		
		(N.M.)	4.13	6713

8.26 Area and population of revenue villages in the District—1981—(cont.)

<i>Sl. No.</i>	<i>Taluk</i>	<i>Name of revenue village/town</i>	<i>Area</i>	<i>Population</i>		
(1)	(2)	(3)	(4)	(5)		
3.	Always	Parakkadavu ..	24.66	25150		
		Kothakulangara North ..	40.50	34701		
		Manjapra ..	73.21	39101		
		Malayattoor ..	13.38	7984		
		Manickamangalam ..	20.82	32957		
		Kothakulangara South (Portion) ..	7.40	12806		
		Chengamanad ..	38.29	46016		
		Chowara ..	8.28	10661		
		Vadakkumbhagam ..	7.19	9966		
		Kizhakkumbhagam ..	7.13	8090		
		Thekkumbhagam ..	6.13	8426		
		Always (Portion) ..	48.07	76124		
		Angamaly Town ..	24.05	28307		
		Always Town ..	7.18	25278		
		4.	Parur	Puthenvelikkara ..	25.50	29690
				Airoor ..	31.66	33812
Parur-Ezhikkara (Portion) ..	19.27			25453		
Alengad ..	21.02			32186		
Kadungallur ..	15.88			27877		
Vadakkekara (N.M.) ..	16.71			42267		
Chendamangalam (N.M.) ..	10.83			25893		
Kottuvally (N.M.) ..	21.00			30665		
Eloor (N.M.) ..	20.73			46856		
Parur Town ..	9.03			26288		

8-26 Area and population of revenue villages in the District—1961—(cont.)

<i>Sl. No.</i>	<i>Taluk</i>	<i>Name of revenue village/town</i>	<i>Area</i>	<i>Population</i>
(1)	(2)	(3)	(4)	(5)
5.	Kunnathunad	Vazhakulam ..	19.64	23934
		Perumbavoor (Portion) ..	14.18	18947
		Cheranalloor ..	36.68	34281
		Vengoor West ..	21.97	14280
		Vengoor East ..	54.91	19065
		Assamannoor ..	21.27	14589
		Rayamangalam ..	29.88	20790
		Vengola ..	35.64	29831
		Kizhakkambalam ..	31.57	24521
		Kunnathunad ..	26.86	22409
		Mazhuvannoor ..	49.11	25571
		Aikkaranad North ..	25.64	16244
		Vadavucode ..	2.50	1976
		Chemmanad ..	56.29	41236
		Aikkaranad South ..	25.53	17208
		Forest Area (Thundathil Range)	212.43	222
		Perumbavoor Town ..	13.59	23064
6.	Muvattupuzha	Mulavoor ..	26.46	20899
		Velloorkunnam (Portion) ..	8.35	7830
		Valakom ..	21.09	13768
		Marady (Portion) ..	17.93	11531
		Onakkoor ..	21.87	11170
		Menmury ..	22.94	11520
		Ramamangalam ..	14.08	9225
		Manced ..	26.19	14432
		Piravam ..	29.36	24048
		Elanji ..	29.48	16030
		Koothattukulam ..	23.18	15057
		Thirumarady ..	29.24	15596
		Palakuzha ..	22.65	12051
		Arakkuzha ..	27.35	12983
		Muvattupuzha (Portion) ..	18.60	13757
		Enanalloor ..	33.90	18007
		Kallookad ..	24.19	11659
		Manjalloor ..	23.48	12818
		Muvattupuzha Town ..	13.18	25313

**8-26 Area and population of revenue villages in the
District—1931—(cont.)**

<i>Sl. No.</i>	<i>Taluk</i>	<i>Name of revenue village/town</i>	<i>Area</i>	<i>Population</i>
(1)	(2)	(3)	(4)	(5)
7.	Kothamangalam	Eramallur ..	27·61	24176
		Kottapady ..	31·94	13987
		Pindimana ..	25·76	14025
		Keerampara ..	32·79	12134
		Kuttamangalam ..	60·03	26291
		Kadavoor ..	23·50	13446
		Pothaniced ..	24·34	14070
		Varapeety ..	21·52	13484
		Kothamangalam Town ..	37·45	33122

WCO

PRINTED BY THE S.G.P. AT THE GOVERNMENT PRESS,
ERNAKULAM—1987

NO