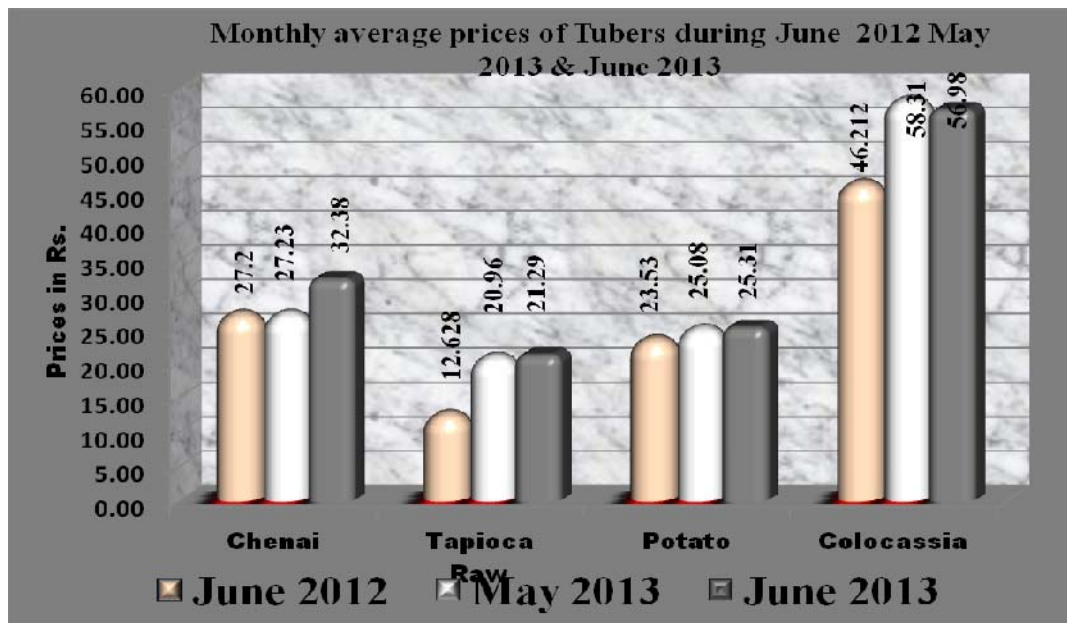




Government of Kerala

# PRICE BULLETIN

## JUNE 2013



PRICES DIVISION  
Department of Economics & Statistics  
Thiruvananthapuram  
2013

## PREFACE

*Price collection is one of the major items of work undertaken by the Department of Economics and Statistics. The importance and usefulness of the information pertaining to the price movements has much significance in the context of a growing economy. This Department has been collecting different types of prices viz. Farm price, Market price, etc. (both Wholesale and Retail). These prices are being widely used for various purposes such as for the preparation of Indices, to provide compensation to Farmer's and for tendering consumable articles for Govt. Institutions. Among the Retail prices, the daily prices of fifty essential commodities being collected on daily basis from District Headquarters assumes significance, because the same is being forwarded daily to the office of the Chief Minister and Minister of Food and Civil Supplies, Minister for Agriculture, Chief Secretary, Food and civil Supplies Secretary, Planning secretary, Agr.Production Commissioner, Department of Civil supplies, Reserve Bank of India etc. In addition to the daily prices, weekly prices are also being collected every Friday.*

*From January 2004 onwards a publication titled "PRICE BULLETIN" is being prepared and published monthly incorporating the Retail prices of main essential commodities under 8 major groups. Group wise analysis has been made with reference to current month, previous month and corresponding month of the previous year with suitable pictorial representations.*

*This publication is being prepared and published by Prices Division under the supervision of **Sri.T.Gorkey Jose, Additional Director (Prices)**. I appreciate the work done by **Smt.L.Sheeja (Assistant Director)**, **Smt.K.Indira Devi (Research Officer)**, **Sri.Sooraj Cheruthottathil (Statistical Assistant Grade I)** and all the Price Reporters and Price Supervisors in the Districts for preparing such a worthy publication.*

*Suggestions if any for improving the publication is solicited.*

Thiruvananthapuram

11-07-2013

Sd/-

V.RAMACHANDRAN

DIRECTOR

## **REVIEW ON RETAIL PRICES OF ESSENTIAL COMMODITIES**

**JUNE 2013**

### **Introduction**

*This bulletin reflects the average retail prices of essential commodities for the month of June 2013. An increasing trend has been seen in the retail prices under report when compared with that of the previous month as well as the corresponding month of previous year. Statement showing the monthly average retail prices of essential commodities for the month of June of the previous year 2012, previous month May 2013 and current month of June 2013 are attached and the percentage variation over previous month and current month of previous year are attached. Group Wise analysis has been made with reference to current month, previous month and the corresponding month of the previous year with suitable pictorial representation.*

# 1. RICE

## Comparison of state average Retail prices of different varieties of Rice

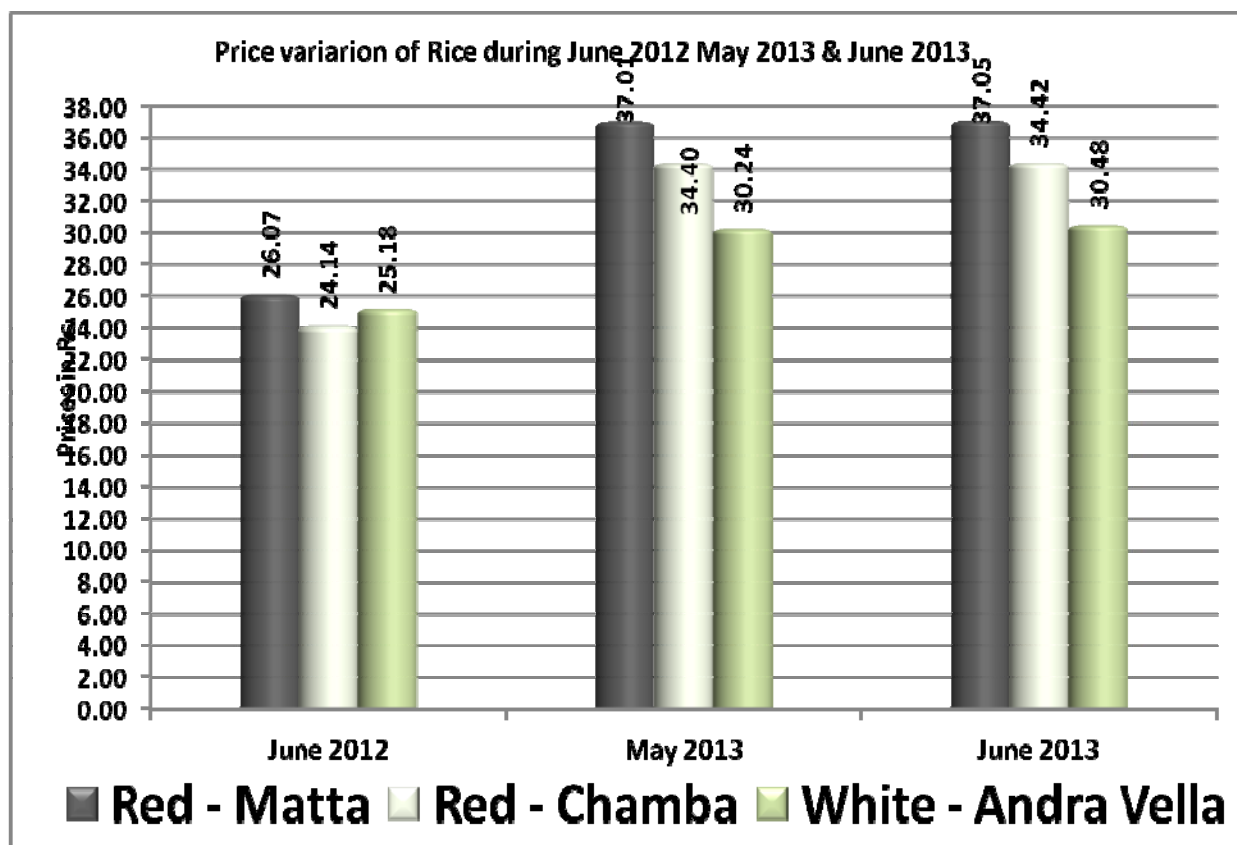
An upward trend has been observed in the retail prices of Rice during the period under report when compared with both the previous month and the corresponding month of the previous year. The price of all items in this group had increased by up to 1% when compared with the price of the previous month.

When compared with the prices of the corresponding month of the previous Year the state average retail prices of Red- Matta, Red-Chamba and Andhra vella had increased by 42.12%, 42.57% and 21.03% respectively. The following table and diagram represents the prices and percentage variation over month and year of Rice

**Table-1**

Sl.No.	Name of Commodity	Unit	Prices (in Rs.) on			Percentage Variation	
			June-2012	May -2013	June -2013	Over month	Over year
1	Red - Matta	Kg	26.07	37.01	37.05	0.12	42.12
2	Red - Chamba	Kg	24.14	34.40	34.42	0.05	42.57
3	White - Andra Vella	Kg	25.18	30.24	30.48	0.79	21.03

**Graph-1**



## 2. PULSES

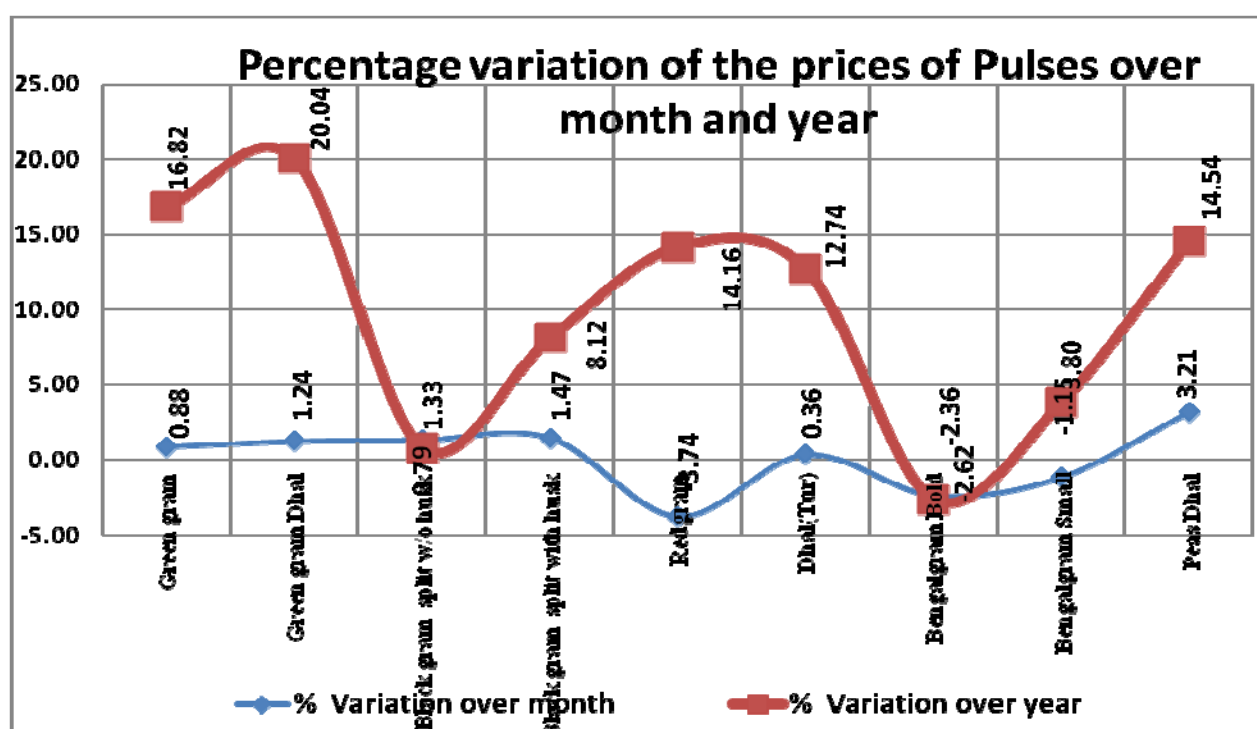
### Comparison of state average Retail prices of Pulses.

A mixed trend is still continuing in the retail prices of pulses during the period under report when compared with both the previous month and the corresponding month of the previous year. A negative change in the price of Red gram Bengal gram bold and Bengal gram small was noticed while the prices of all other items increased by 1% to 4%, when compared with price of the previous month. When compared with price of the corresponding month of the previous year Bengal gram Bold showed a negative change and the price of all other items increased by 1% to 21%. The following table and diagram represents the prices and percentage variation over month and year of pulses.

Table-2

Sl. No.	Name of Commodity	Unit	Prices (in Rs.) on			Percentage Of Variation	
			June-2012	May -2013	June -2013	Over month	Over year
1	Green gram	Kg	64.38	74.56	75.22	0.88	16.82
2	Green gram dhal	Kg	70.18	83.21	84.25	1.24	20.04
3	Black gram split w/o husk	Kg	63.80	63.46	64.30	1.33	0.79
4	Black gram split with husk	Kg	57.15	60.90	61.79	1.47	8.12
5	Redgram	Kg	56.54	67.06	64.55	-3.74	14.16
6	Dhall(Tur)	Kg	68.88	77.38	77.66	0.36	12.74
7	Bengalgram Bold	Kg	62.38	62.22	60.75	-2.36	-2.62
8	Bengalgram Small	Kg	55.46	58.24	57.57	-1.15	3.80
9	Peas Dhall	Kg	40.97	45.47	46.93	3.21	14.54

Graph - 2



### 3. OTHER FOOD ITEMS

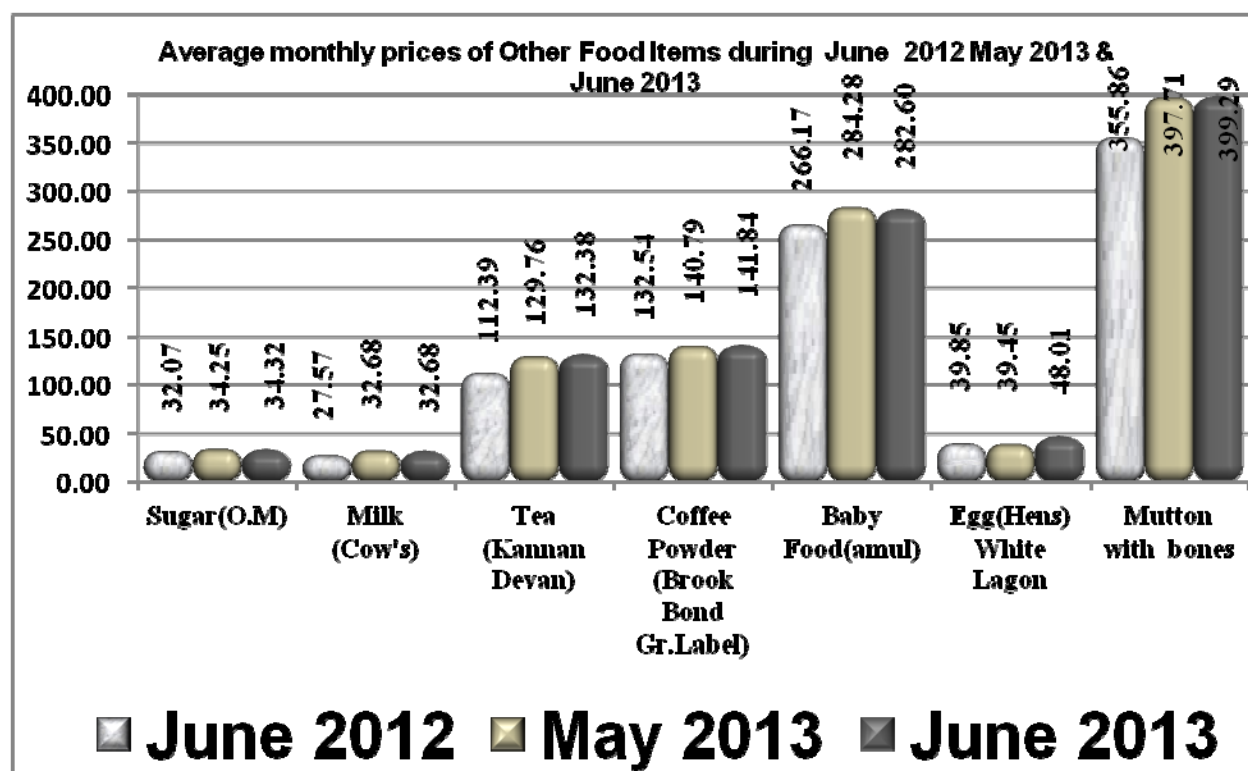
#### Comparison of state average Retail prices of other food items.

During this period the state average retail price of all other food items showed an upward trend when compared with the price of the previous month and the corresponding month of the previous year. The price of all the items in this group had increased by up to 22% when compared with the price of the previous month. When compared with the prices of the corresponding month of the previous year the state average retail prices of all the other items increased by 6% to 21% respectively.

Table-3

Sl. No.	Name of Commodity	Unit	Prices (in Rs.) on			Percentage Of Variation	
			June-2012	May -2013	June -2013	Over month	Over year
1	Sugar(O.M)	Kg.	32.07	34.25	34.32	0.21	7.02
2	Milk (Cow's)	Ltr.	27.57	32.68	32.68	0.00	18.53
3	Tea (Kannan Devan)	500gms	112.39	129.76	132.38	2.02	17.79
4	Coffee Powder (Brooke Bond Gr.Label)	500gms	132.54	140.79	141.84	0.75	7.01
5	Baby Food (Amul)	Kg	266.17	284.28	282.60	-0.59	6.17
6	Egg(Hens) White Lagon	Dozen	39.85	39.45	48.01	21.70	20.48
7	Mutton with bones	Kg	355.86	397.71	399.29	0.40	12.20

Graph-3



## 4. OIL AND OILSEEDS

### Comparison of state average Retail prices of Oil and oilseeds.

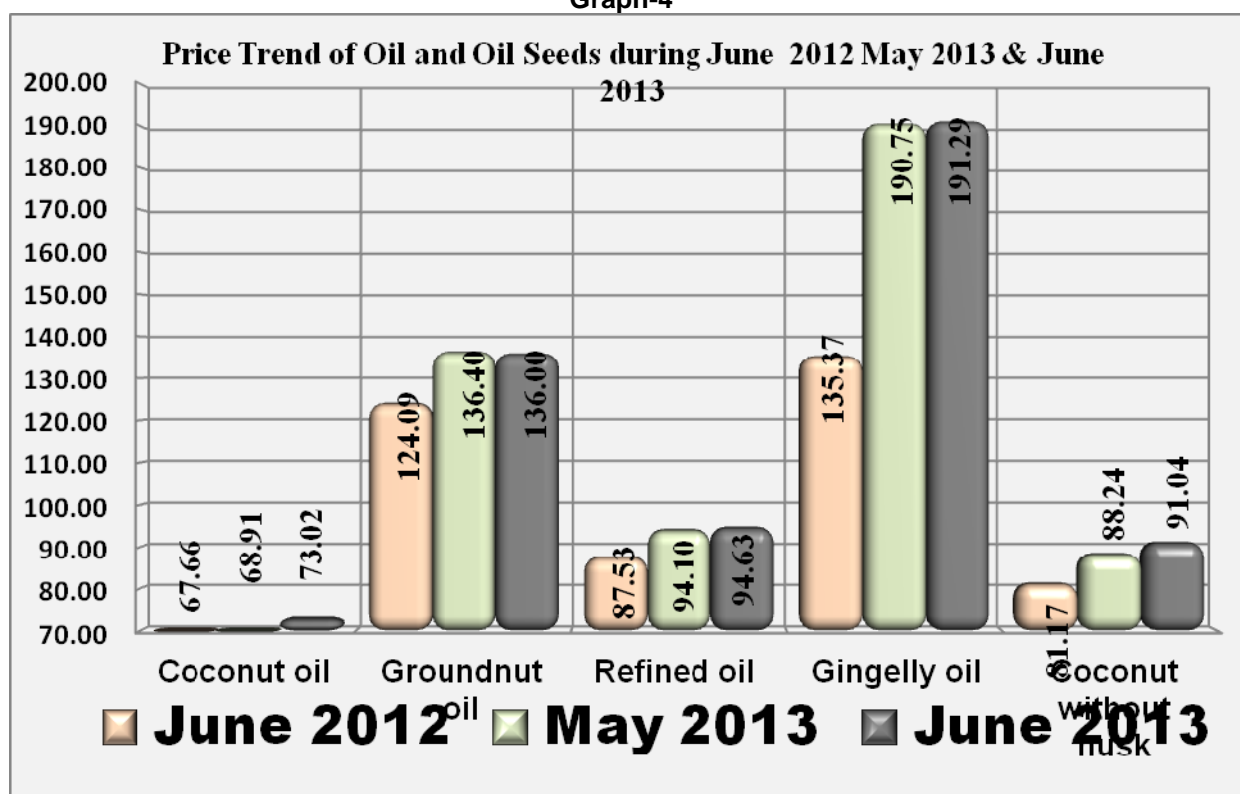
A mixed trend was observed during the month in the State average retail price of oil and oil seeds when compared with the price of the previous month as well as that of the corresponding month of the previous year. The prices of all items except Groundnut oil showed marginal increase when compared with the prices of the previous month.

When compared with the price of the corresponding month of the previous year the state average retail price of all items increased by 7% to 42%. Notable increase was seen in the price of Gingelly oil (41.31%) when compared with the price of the corresponding month of the previous year.

**Table-4**

Name of Commodity	Unit	Prices (in Rs.) on			Over month	Over year
		June-2012	May -2013	June -2013		
Coconut oil	Ltr.	67.66	68.91	73.02	5.95	7.92
Groundnut oil	Ltr.	124.09	136.40	136.00	-0.29	9.60
Refined oil	Ltr.	87.53	94.10	94.63	0.56	8.11
Gingelly oil	Ltr.	135.37	190.75	191.29	0.28	41.31
Coconut without husk	10 nos	81.17	88.24	91.04	3.17	12.15

**Graph-4**



## 5. SPICES AND CONDIMENTS

### Comparison of state Average Retail prices of Spices and Condiments:

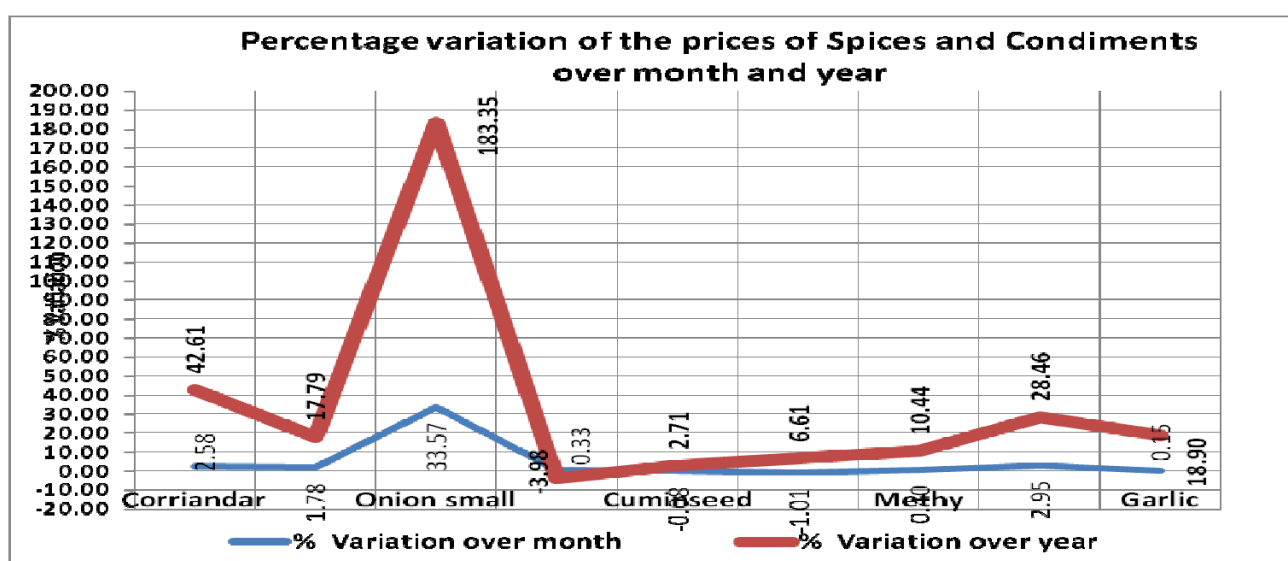
A mixed trend is seen in the state average retail price of spices and condiments. A negative trend is seen in the state average retail prices of cuminseed and Mustard, while the state average retail prices of all the other items except Onion small showed a marginal increase when compared with the price of the previous month.

Tamarind without seeds (loose) showed a negative change of 3.98 %, while the state average retail prices of all other items had increased by 2% to 184 % when compared with the prices of the corresponding month of the previous year. Notable increase was seen in the retail prices of Onion small (33.57% and 183.35%) Corriander (2.58% and 42.61%), and Turmeric (2.95% and 28.46%) when compared with the prices of the previous month as well as the corresponding month of the previous year.

**Table-5**

Sl. No.	Name of Commodity	Unit	Prices (in Rs.) on			Percentage of Variation	
			June-2012	May -2013	June -2013	Over previous month	Over previous Year
1	Corriandar	Kg.	64.91	90.25	92.58	2.58	42.61
2	Chillies dry	Kg.	74.29	85.97	87.50	1.78	17.79
3	Onion small	Kg.	29.77	63.16	84.36	33.57	183.35
4	Tamarind without seeds loose	Kg.	82.94	79.38	79.64	0.33	-3.98
5	Cuminseed	100gm	22.44	23.06	23.05	-0.08	2.71
6	Mustard	100gm	6.92	7.45	7.38	-1.01	6.61
7	Methy	100gm	6.40	7.04	7.07	0.40	10.44
8	Turmeric	100gm	10.91	13.62	14.02	2.95	28.46
9	Garlic	100gm	4.96	5.89	5.90	0.15	18.90

**Graph 5**





## 6. TUBERS

### Comparison of state Average Retail prices of Tubers

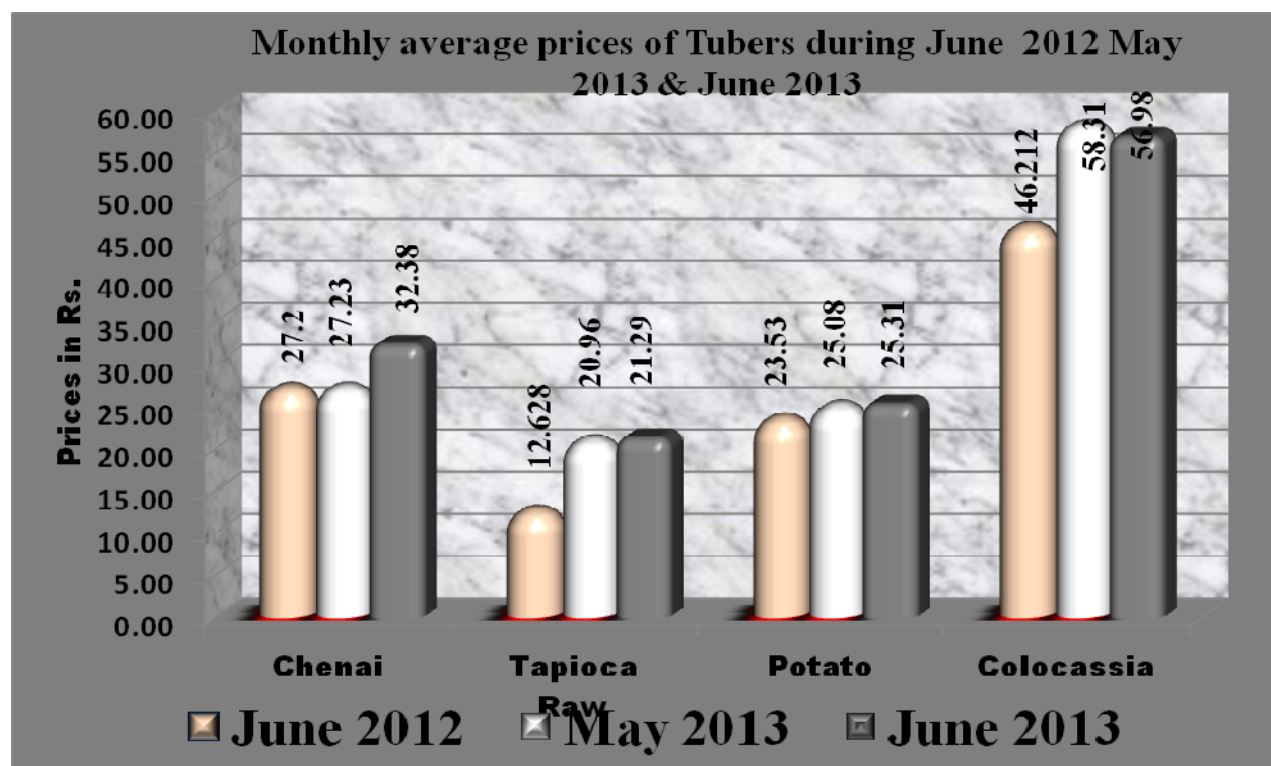
During this period the prices of all items of tubers except Colocassia showed an upward trend when compared with the prices of the previous month.

When compared with the prices of corresponding month of the previous year, the prices of all items show an increasing trend by 7% to 69%. Notable increase was seen in the retail prices of Tapioca Raw (68.55%), and Colocassia (23.3%) when compared with the prices of the corresponding month of the previous year. The price of the Chenai (18.91% and 19.03%) exhibited huge variation when compared with that of the previous month as well as the corresponding month of the previous year.

Table-6

Sl. No.	Name of Commodity	Unit	Prices (in Rs.) on			Percentage of Variation	
			June-2012	May -2013	June -2013	Over previous month	Over previous Year
1	Chenai	Kg.	27.20	27.23	32.38	18.91	19.03
2	Tapioca Raw	Kg.	12.63	20.96	21.29	1.55	68.55
3	Potato	Kg.	23.53	25.08	25.31	0.88	7.54
4	Colocassia	Kg.	46.21	58.31	56.98	-2.28	23.30

Graph 6



## 7. VEGETABLES

### Comparison of state average Retail prices of Vegetables.

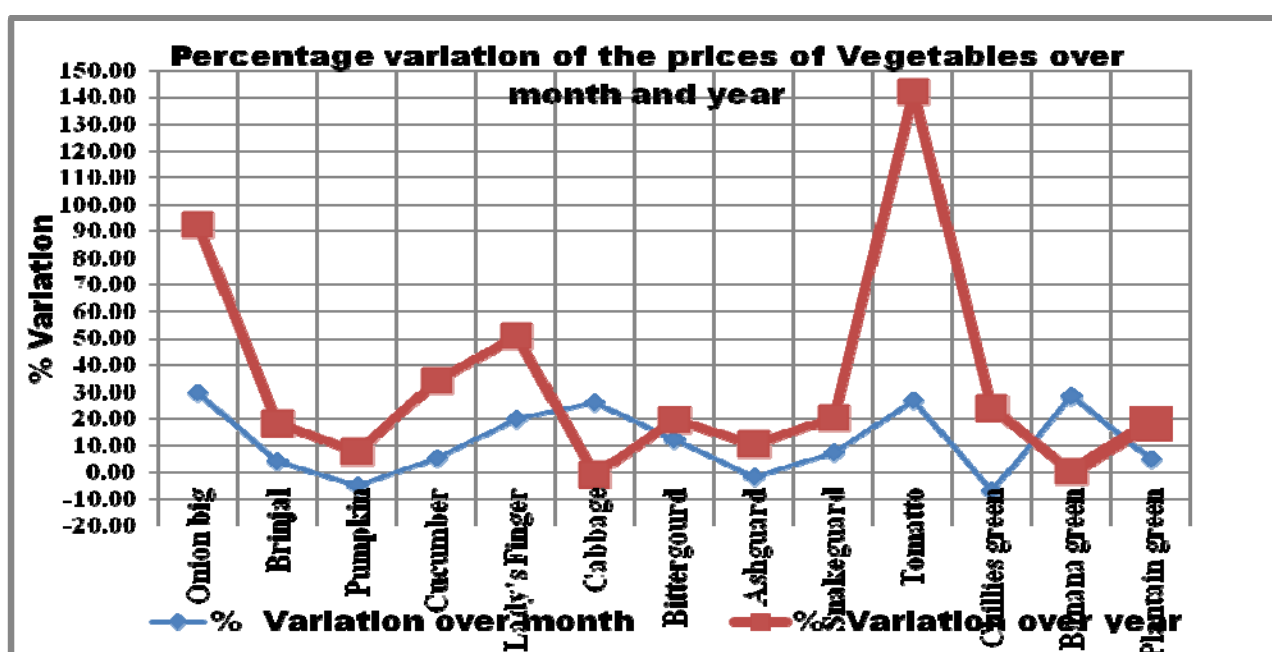
A mixed trend was observed during the month in the State average retail price of vegetables compared with that of the previous month as well as the corresponding month of the previous year. The prices of Pumpkin, Ash gourd and Chillies green showed a downward trend of 4.87%, 1.64% and 6.83% respectively, while the prices of all the other items showed an upward trend of 3% to 30% when compared with the prices of the previous month.

The state average retail price of Cabbage (1.09%) showed a negative trend, while the prices of all other items increased by 1% to 142% when compared with the prices of the corresponding month of the previous year. Notable increase was seen in the price of Onion big (92.42%), Cumcumber (34.10%), Lady's Finger (50.82%) and Tomatto (141.87%), when compared with the prices of the corresponding month of the previous year. The following table and diagram represents the prices and percentage variation over month and year of Vegetables..

Table-7

Sl. No.	Name of Commodity	Unit	Prices (in Rs.) on			Percentage Of Variation	
			June-2012	May -2013	June -2013	Over previous month	Over previous Year
1	Onion big	Kg.	12.56	18.66	24.16	29.49	92.42
2	Brinjal	Kg.	25.81	29.37	30.52	3.90	18.22
3	Pumpkin	Kg.	17.07	19.32	18.38	-4.87	7.62
4	Cucumber	Kg.	14.83	18.87	19.89	5.37	34.10
5	Lady's Finger	Kg.	22.83	28.69	34.43	20.02	50.82
6	Cabbage	Kg	30.80	24.15	30.47	26.17	-1.09
7	Bitter gourd	Kg.	38.24	40.67	45.65	12.23	19.36
8	Ash gourd	Kg.	16.97	19.04	18.73	-1.64	10.37
9	Snake gourd	Kg.	26.30	29.47	31.63	7.31	20.26
10	Tomatto	Kg.	19.99	38.08	48.34	26.93	141.87
11	Chillies green	100gm	4.06	5.40	5.03	-6.83	23.83
12	Banana green	Kg.	42.24	33.01	42.41	28.47	0.40
13	Plantain green	Kg.	20.00	22.61	23.67	4.69	18.36

Graph-7



## 8. MISCELLANEOUS ITEMS

### Comparison of state Average Retail prices of miscellaneous items

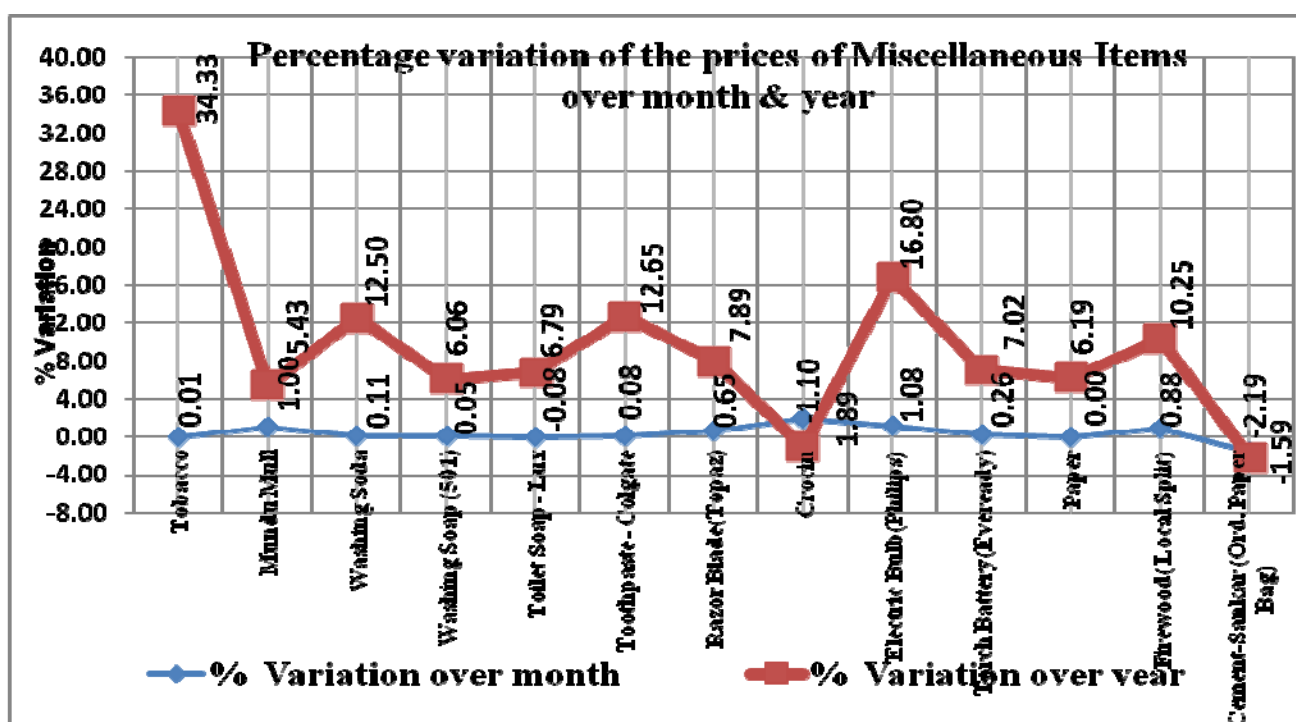
A mixed trend is still continuing in the state average retail prices of miscellaneous items when compared with the prices of the previous month as well as the corresponding month of the previous year. A negative trend is seen in the state average retail prices of Toilet Soap- Lux (0.08%) and Cement – Sankar (1.59%) while all the other items showed a marginal increase when compared with the prices of the previous month.

When compared with the prices of the corresponding month of the previous year all items except Crocin and Cement – Sankar showed an increasing trend by 5% to 35%. Notable increase was seen in the state average retail price of Tobacco (34.33%).

Table-8

Sl.No	Name of Commodity	Unit	Prices (in Rs.) on			Percentage Of Variation	
			June-2012	May -2013	June -2013	Over previous month	Over previous Year
1	Tobacco	Kg.	116.79	156.86	156.88	0.01	34.33
2	Mundu Mull	Each	101.93	106.40	107.47	1.00	5.43
3	Washing Soda	Kg.	32.89	36.96	37.00	0.11	12.50
4	Washing Soap (501)	1/2 Bar	14.56	15.43	15.44	0.05	6.06
5	Toilet Soap - Lux	100 gm	19.58	20.93	20.91	-0.08	6.79
6	Toothpaste - Colgate	100 gm	32.40	36.47	36.50	0.08	12.65
7	Razor Blade(Topaz)	5 nos	8.01	8.58	8.64	0.65	7.89
8	Crocin	2 tabs	2.73	2.65	2.70	1.89	-1.10
9	Electric Bulb(Philips)	40W	11.80	13.64	13.79	1.08	16.80
10	Torch Battery (Eveready)	Each	14.25	15.21	15.25	0.26	7.02
11	Paper	24Sheet	13.22	14.04	14.04	0.00	6.19
12	Firewood( Local Split)	Quintal	344.67	376.67	380.00	0.88	10.25
13	Cement - Sankar (Ord.Paper Bag)	Packet	359.00	356.78	351.13	-1.59	-2.19

Graph 8



## ANNEXURE

Statement Showing The State Average Retail Prices Of Essential Commodities							
for The month of June 2013							
Sl. No.	Name of Commodity	Unit	Prices (in Rs.) on			Percentage of Variation	
			June-2012	May -2013	June -2013	Over month	Over year
(1)	(2)	(3)				(7)	(8)
	<b>A. RICE - Open Market</b>						
1	Red - Matta	Kg	26.07	37.01	37.05	0.12	42.12
2	Red - Chamba	Kg	24.14	34.40	34.42	0.05	42.57
3	White - Andra Vella	Kg	25.18	30.24	30.48	0.79	21.03
	<b>B. PULSES</b>						
1	Green gram	Kg	64.38	74.56	75.22	0.88	16.82
2	Green gram dhall	Kg	70.18	83.21	84.25	1.24	20.04
3	Black gram split w/o husk	Kg	63.80	63.46	64.30	1.33	0.79
4	Black gram split with husk	Kg	57.15	60.90	61.79	1.47	8.12
5	Redgram	Kg	56.54	67.06	64.55	-3.74	14.16
6	Dhall(Tur)	Kg	68.88	77.38	77.66	0.36	12.74
7	Bengalgram Bold	Kg	62.38	62.22	60.75	-2.36	-2.62
8	Bengalgram Small	Kg	55.46	58.24	57.57	-1.15	3.80
9	Peas Dhall	Kg	40.97	45.47	46.93	3.21	14.54
	<b>C. OTHER FOOD ITEMS</b>						
1	Sugar(O.M)	Kg.	32.07	34.25	34.32	0.21	7.02
2	Milk (Cow's)	Ltr.	27.57	32.68	32.68	0.00	18.53
3	Tea (Kannan Devan)	500gms	112.39	129.76	132.38	2.02	17.79
4	Coffee Powder (Brook Bond Gr.Label)	500gms	132.54	140.79	141.84	0.75	7.01
5	Baby Food(amul)	Kg	266.17	284.28	282.60	-0.59	6.17
6	Egg(Hens) White Lagon	Dozen	39.85	39.45	48.01	21.70	20.48
7	Mutton with bones	Kg	355.86	397.71	399.29	0.40	12.20
	<b>D. OIL AND OIL SEEDS</b>						
1	Coconut oil	Ltr.	67.66	68.91	73.02	5.95	7.92
2	Groundnut oil	Ltr.	124.09	136.40	136.00	-0.29	9.60
3	Refined oil	Ltr.	87.53	94.10	94.63	0.56	8.11
4	Gingelly oil	Ltr.	135.37	190.75	191.29	0.28	41.31
5	Coconut without husk	10 nos	81.17	88.24	91.04	3.17	12.15
	<b>E. SPICES AND CONDIMENTS</b>						
1	Corriander	Kg.	64.91	90.25	92.58	2.58	42.61
2	Chillies dry	Kg.	74.29	85.97	87.50	1.78	17.79
3	Onion small	Kg.	29.77	63.16	84.36	33.57	183.35
4	Tamarind without seeds loose	Kg.	82.94	79.38	79.64	0.33	-3.98
5	Cuminseed	100gm	22.44	23.06	23.05	-0.08	2.71
6	Mustard	100gm	6.92	7.45	7.38	-1.01	6.61
7	Methy	100gm	6.40	7.04	7.07	0.40	10.44
8	Turmeric	100gm	10.91	13.62	14.02	2.95	28.46
9	Garlic	100gm	4.96	5.89	5.90	0.15	18.90

Sl. No.	Name of Commodity	Unit	Prices (in Rs.) on			Percentage of Variation	
			June-2012	May -2013	June -2013	Over month	Over year
	<b>F. TUBERS</b>						
1	Chenai	Kg.	27.20	27.23	32.38	18.91	19.03
2	Tapioca Raw	Kg.	12.63	20.96	21.29	1.55	68.55
3	Potato	Kg.	23.53	25.08	25.31	0.88	7.54
4	Colocassia	Kg.	46.21	58.31	56.98	-2.28	23.30
	<b>G. VEGETABLES</b>						
1	Onion big	Kg.	12.56	18.66	24.16	29.49	92.42
2	Brinjal	Kg.	25.81	29.37	30.52	3.90	18.22
3	Pumpkin	Kg.	17.07	19.32	18.38	-4.87	7.62
4	Cucumber	Kg.	14.83	18.87	19.89	5.37	34.10
5	Lady's Finger	Kg.	22.83	28.69	34.43	20.02	50.82
6	Cabbage	Kg.	30.80	24.15	30.47	26.17	-1.09
7	Bitter gourd	Kg.	38.24	40.67	45.65	12.23	19.36
8	Ash gourd	Kg.	16.97	19.04	18.73	-1.64	10.37
9	Snake gourd	Kg.	26.30	29.47	31.63	7.31	20.26
10	Tomatto	Kg.	19.99	38.08	48.34	26.93	141.87
11	Chillies green	100gm	4.06	5.40	5.03	-6.83	23.83
12	Banana green	Kg.	42.24	33.01	42.41	28.47	0.40
13	Plantain green	Kg.	20.00	22.61	23.67	4.69	18.36
	<b>H. MISCELLANEOUS ITEMS</b>						
1	Tobacco	Kg.	116.79	156.86	156.88	0.01	34.33
2	Mundu Mull	Each	101.93	106.40	107.47	1.00	5.43
3	Washing Soda	Kg.	32.89	36.96	37.00	0.11	12.50
4	Washing Soap (501)	1/2 Bar	14.56	15.43	15.44	0.05	6.06
5	Toilet Soap - Lux	100 gm	19.58	20.93	20.91	-0.08	6.79
6	Toothpaste - Colgate	100 gm	32.40	36.47	36.50	0.08	12.65
7	Razor Blade(Topaz)	5 nos	8.01	8.58	8.64	0.65	7.89
8	Crocicn	2 tabs	2.73	2.65	2.70	1.89	-1.10
9	Electric Bulb(Philips)	40W	11.80	13.64	13.79	1.08	16.80
10	Torch Battery(Eveready)	Each	14.25	15.21	15.25	0.26	7.02
11	Paper	24 Sheets	13.22	14.04	14.04	0.00	6.19
12	Firewood( Local Split)	Quintal	344.67	376.67	380.00	0.88	10.25
13	Cement - Sankar (Ord.Paper Bag)	Packet	359.00	356.78	351.13	-1.59	-2.19