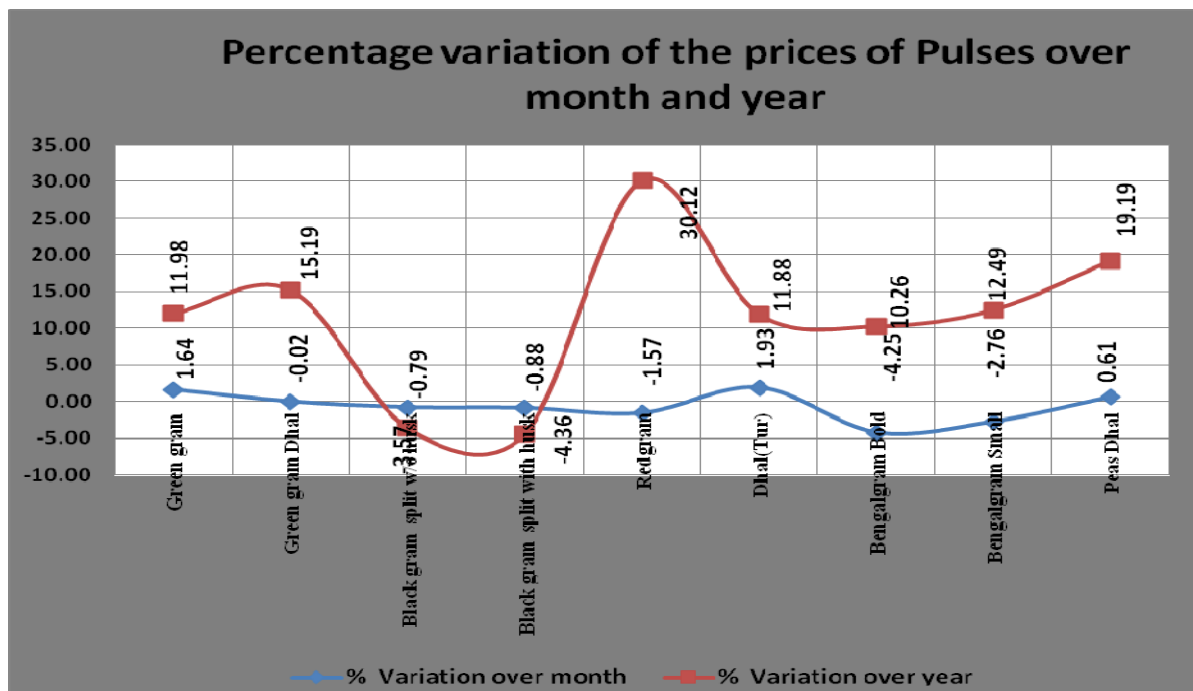




Government of Kerala

PRICE BULLETIN APRIL 2013



PRICES DIVISION
Department of Economics & Statistics
Thiruvananthapuram
2013

PREFACE

Price collection is one of the major items of work undertaken by the Department of Economics and Statistics. The importance and usefulness of the information pertaining to the price movements has much significance in the context of a growing economy. This Department has been collecting different types of prices viz. Farm price, Market price, etc. (both Wholesale and Retail). These prices are being widely used for various purposes such as for the preparation of Indices, to provide compensation to Farmer's and for tendering consumable articles for Govt. Institutions. Among the Retail prices, the daily prices of fifty essential commodities being collected on daily basis from District Headquarters assumes significance, because the same is being forwarded daily to the office of the Chief Minister and Minister of Food and Civil Supplies, Minister for Agriculture, Chief Secretary, Food and civil Supplies Secretary, Planning secretary, Agr.Production Commissioner, Department of Civil supplies, Reserve Bank of India etc. In addition to the daily prices, weekly prices are also being collected every Friday.

From January 2004 onwards a publication titled "PRICE BULLETIN" is being prepared and published monthly, incorporating the Retail prices of main essential commodities under 8 major groups. Group wise analysis has been made with reference to current month, previous month and corresponding month of the previous year with suitable pictorial representations.

*This publication is being prepared and published by Prices Division under the supervision of **Sri.T.Gorkey Jose, Additional Director (Prices)**. I appreciate the work done by **Smt.L.Sheeja (Assistant Director)**, **Smt.K.Indira Devi (Research Officer)**, **Sri.Sooraj Cheruthottathil (Statistical Assistant Grade I)** and all the Price Reporters and Price Supervisors in the Districts for preparing such a worthy publication.*

Suggestions if any for improving the publication is solicited.

Thiruvananthapuram
18-05-2013

Sd/-
V.RAMACHANDRAN
DIRECTOR

REVIEW ON RETAIL PRICES OF ESSENTIAL COMMODITIES

APRIL 2013

Introduction

This bulletin reflects the average retail prices of essential commodities for the month of April 2013. A mixed trend has been seen in the retail prices under report when compared with that of the corresponding period of the last year as well as the last month. Statement showing the monthly average retail prices of essential commodities for the month of April of the previous year 2012, previous month March 2012 and current month of April 2013 are attached and the percentage variation over previous month and current month of previous year are attached. GroupWise analysis has been made with reference to current month, previous month and the corresponding month of the previous year with suitable pictorial representations.

1. RICE

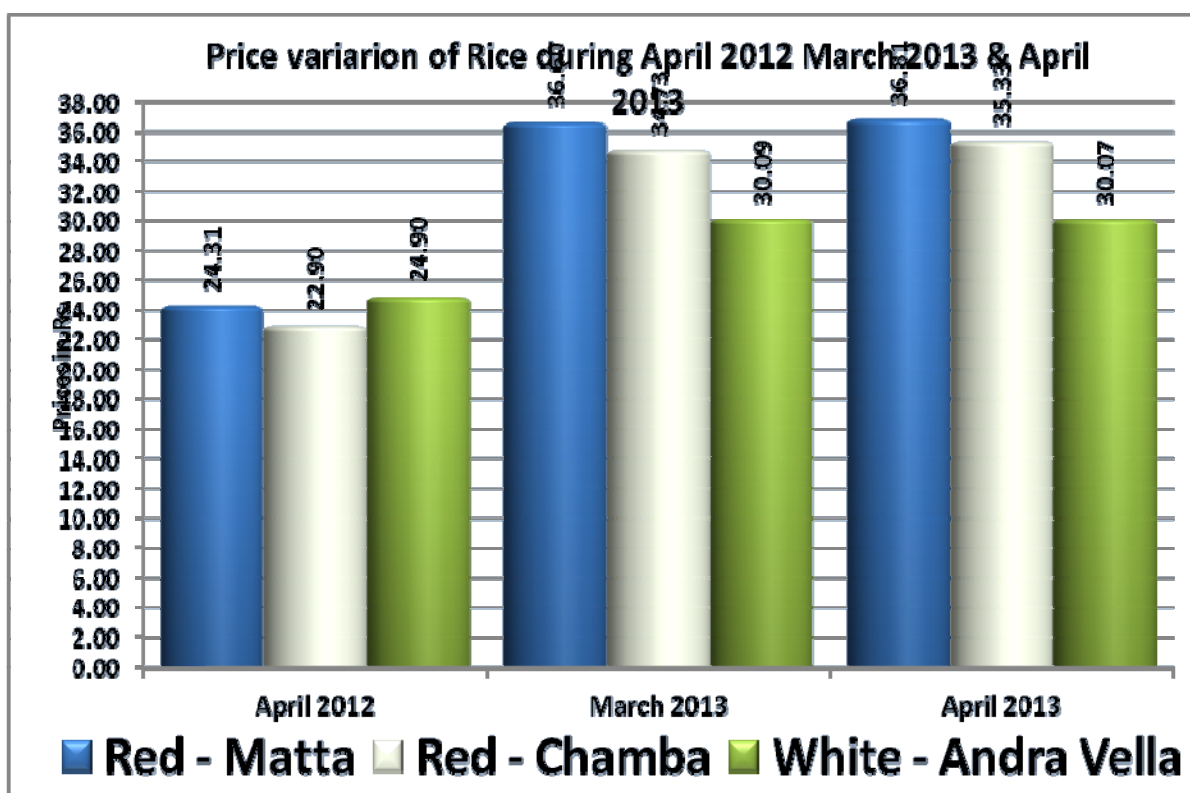
Comparison of State average retail prices of different varieties of Rice

A mixed trend has been observed in the retail price of Rice during the period under report when compared with the price of the previous month. A nominal increase is seen in the price of Red-matta and Red-Chamba, the price of Andra vella shows a negative change when compared with the price of the previous month. When compared with the corresponding month of the previous year state average retail prices of Red-matta, Red-Chamba and White Andra vella had increased by 51.45%, 54.29% and 20.77% respectively. The following table and diagram represents the prices and percentage variation over month and year of Rice.

Table-1

Sl.No.	Name of Commodity	Unit	Prices (in Rs.) on			Percentage Variation	
			April 2012	March 2012	April 2013	Over month	Over year
1	Red - Matta	Kg	24.31	36.60	36.81	0.58	51.45
2	Red - Chamba	Kg	22.90	34.73	35.33	1.72	54.29
3	White - Andra Vella	Kg	24.90	30.09	30.07	-0.07	20.77

Graph-1



2. PULSES

Comparison of State average retail prices of Pulses.

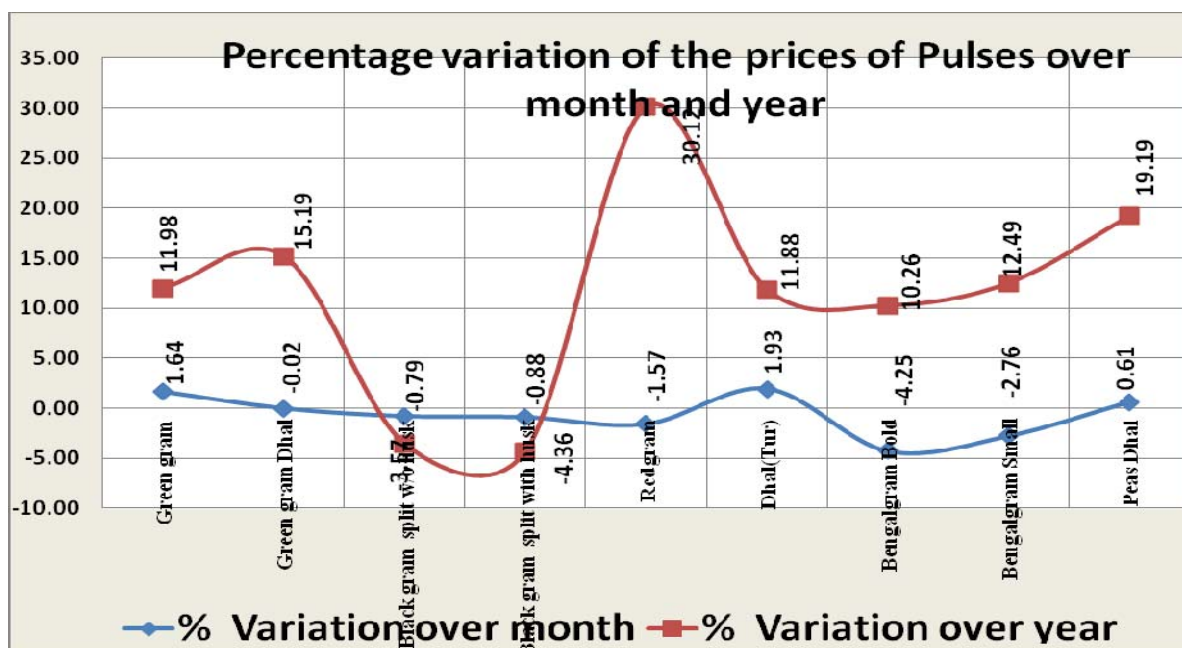
A mixed trend is still continuing in the retail prices of pulses during the period under report when compared with both the previous month and the corresponding month of the previous year. A nominal increase in the prices of Green gram, Red gram and Peas dhal was noticed while all other items decreased by 1% to 5% when compared with the price of the previous month.

When compared with the corresponding month of the previous year the state average retail prices of Black gram split without husk and with husk had decreased by 3.57% and 4.36% respectively. While all other items showed an upward trend of 10% to 31%. Notable increase was seen in the price of Red gram (30.12%) when compared with the price of the corresponding month of the previous year. The following table and diagram represents the prices and percentage variation over month and year of Pulses.

Table-2

Sl. No.	Name of Commodity	Unit	Prices (in Rs.) on			Percentage Of Variation	
			April 2012	March 2012	April 2013	Over month	Over year
1	Green gram	Kg	66.18	72.91	74.11	1.64	11.98
2	Green gram dhal	Kg	71.73	82.64	82.63	-0.02	15.19
3	Black gram split w/o husk	Kg	65.52	63.68	63.18	-0.79	-3.57
4	Black gram split with husk	Kg	64.00	61.75	61.21	-0.88	-4.36
5	Redgram	Kg	52.41	69.29	68.20	-1.57	30.12
6	Dhall(Tur)	Kg	68.20	74.86	76.30	1.93	11.88
7	Bengalgram Bold	Kg	56.04	64.53	61.79	-4.25	10.26
8	Bengalgram Small	Kg	51.60	59.69	58.05	-2.76	12.49
9	Peas Dhall	Kg	37.22	44.08	44.36	0.61	19.19

Graph - 2



3. OTHER FOOD ITEMS

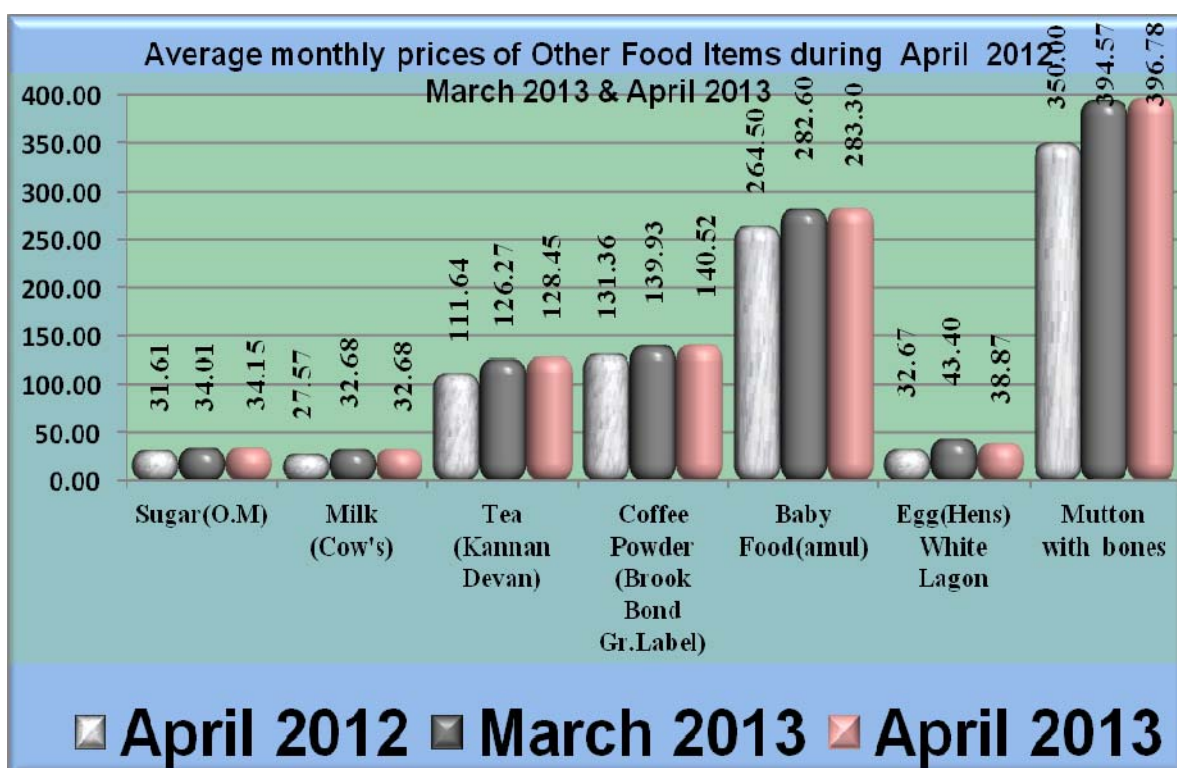
Comparison of State average retail prices of other food items.

During this period the state average retail prices of all the items in this group except Egg (Hens) White Lagoon showed a nominal increase when compared with the price of the previous month. The price of the Egg (hens) white Lagoon had decreased by 10.43% when compared with the prices of the previous month. The price of all the other items in this group had increased by 6% to 19% when compared with the price of the corresponding month of the previous year.

Table-3

Sl. No.	Name of Commodity	Unit	Prices (in Rs.) on			Percentage Of Variation	
			April 2012	March 2012	April 2013	Over month	Over year
1	Sugar(O.M)	Kg.	31.61	34.01	34.15	0.41	8.04
2	Milk (Cow's)	Ltr.	27.57	32.68	32.68	0.00	18.53
3	Tea (Kannan Devan)	500gms	111.64	126.27	128.45	1.72	15.05
4	Coffee Powder (Brooke Bond Gr.Label)	500gms	131.36	139.93	140.52	0.42	6.98
5	Baby Food (Amul)	Kg	264.50	282.60	283.30	0.25	7.11
6	Egg(Hens) White Lagon	Dozen	32.67	43.40	38.87	-10.43	18.98
7	Mutton with bones	Kg	350.00	394.57	396.78	0.56	13.37

Graph-3



4. OIL AND OILSEEDS

Comparison of State average retail prices of Oil and oilseeds.

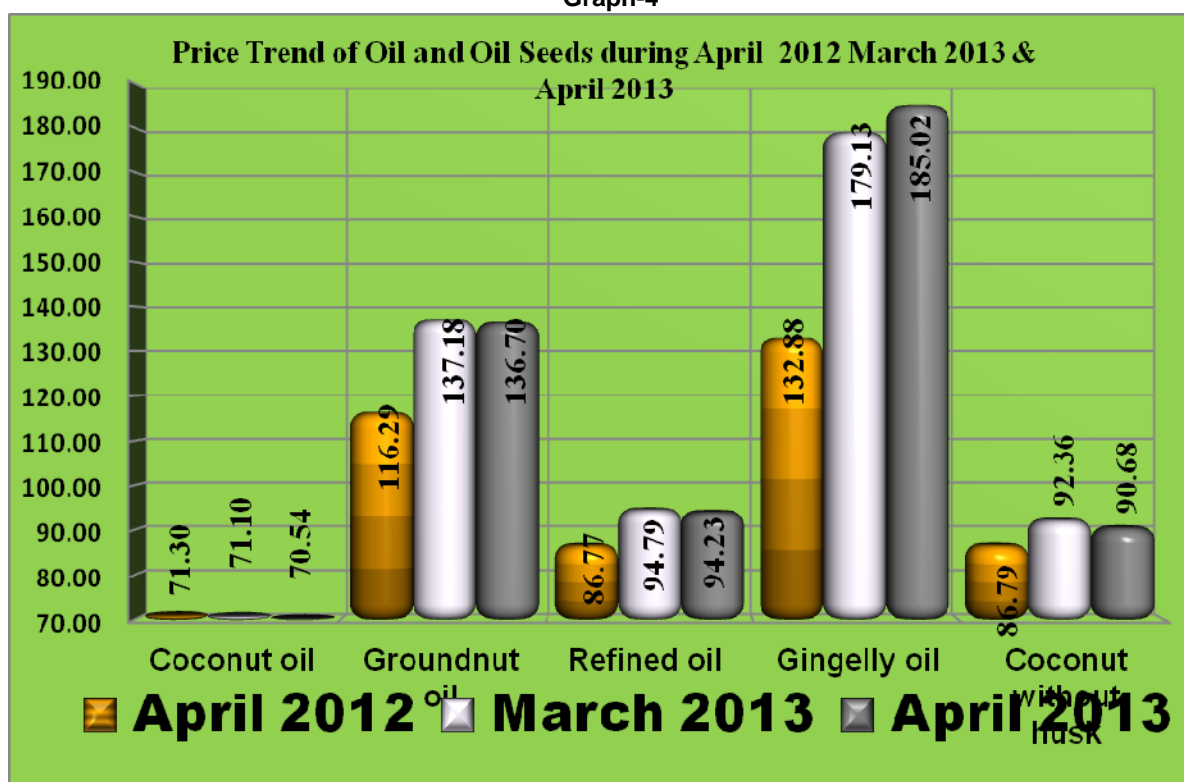
A mixed trend is still continuing in the retail prices of Oil and Oil seeds when compared with the price of the previous month and the corresponding month of the previous year. During this period the prices of all items of Oil and Oil seeds except Gingally oil showed a negative change when compared with the price of the previous month.

When compared with the corresponding month of the previous year, State average retail price of Coconut oil decreased by 1.08%, while the prices of all other items had increased by 4% to 40%.

Table-4

Name of Commodity	Unit	Prices (in Rs.) on			Percentage Of Variation	
		April 2012	March 2012	April 2013	Over month	Over year
Coconut oil	Ltr.	71.30	71.10	70.54	-0.80	-1.08
Groundnut oil	Ltr.	116.29	137.18	136.70	-0.35	17.55
Refined oil	Ltr.	86.77	94.79	94.23	-0.58	8.60
Gingelly oil	Ltr.	132.88	179.13	185.02	3.29	39.24
Coconut without husk	10 nos	86.79	92.36	90.68	-1.82	4.48

Graph-4



5. SPICES AND CONDIMENTS

Comparison of State average retail prices of Spices and Condiments:

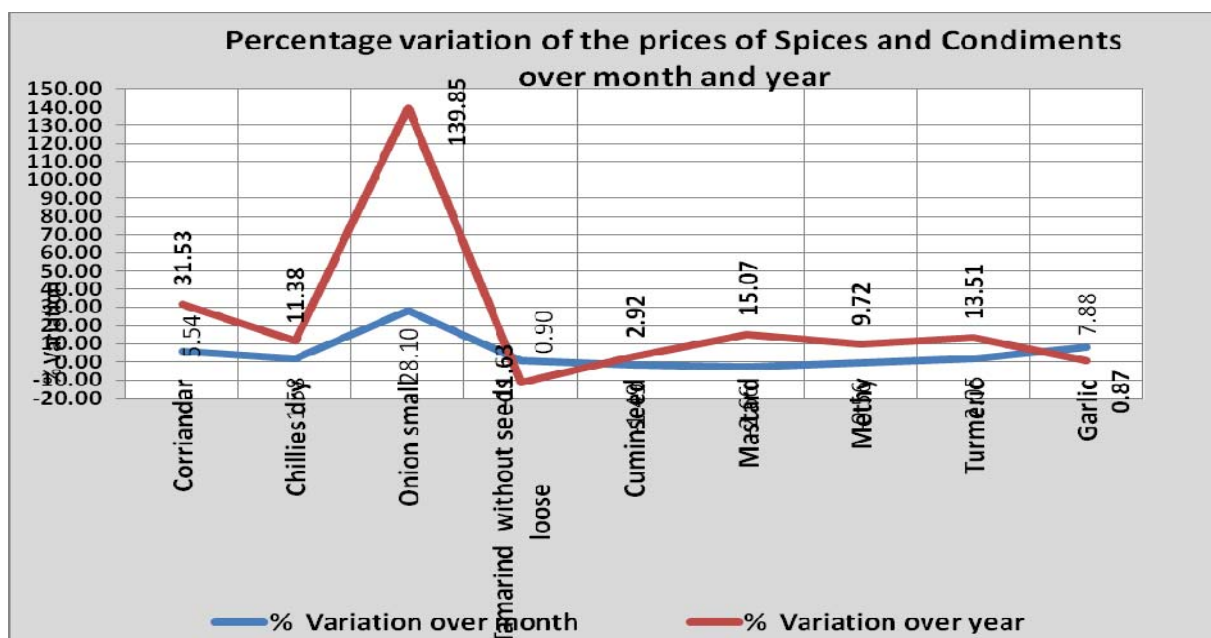
A mixed trend is seen in the state average retail price of spices and condiments compared with the price of the previous month and the corresponding month of the previous year. Cumin seed, Mustard and Methy showed a negative change of 1.49%, 2.66% and 0.56% respectively, while the state average retail prices of all the other items showed an upward trend of 1% to 29% when compared with the price of previous month.

Tamarind without seed loose showed a negative change of 11.63% while the prices of all other items had increased by 1% to 139.85%. Notable increase was seen in the retail prices of Onion small (139.85%) when compared with the prices of the corresponding month of the previous year.

Table-5

Sl. No.	Name of Commodity	Unit	Prices (in Rs.) on			Percentage of Variation	
			April 2012	March 2012	April 2013	Over previous month	Over previous Year
1	Corriandar	Kg.	65.30	81.39	85.89	5.54	31.53
2	Chillies dry	Kg.	77.18	84.63	85.97	1.58	11.38
3	Onion small	Kg.	19.09	35.74	45.79	28.10	139.85
4	Tamarind without seeds loose	Kg.	89.16	78.08	78.79	0.90	-11.63
5	Cuminseed	100gm	22.26	23.26	22.91	-1.49	2.92
6	Mustard	100gm	6.45	7.63	7.43	-2.66	15.07
7	Methy	100gm	6.36	7.01	6.97	-0.56	9.72
8	Turmeric	100gm	11.44	12.72	12.98	2.05	13.51
9	Garlic	100gm	5.17	4.83	5.22	7.88	0.87

Graph 5



6. TUBERS

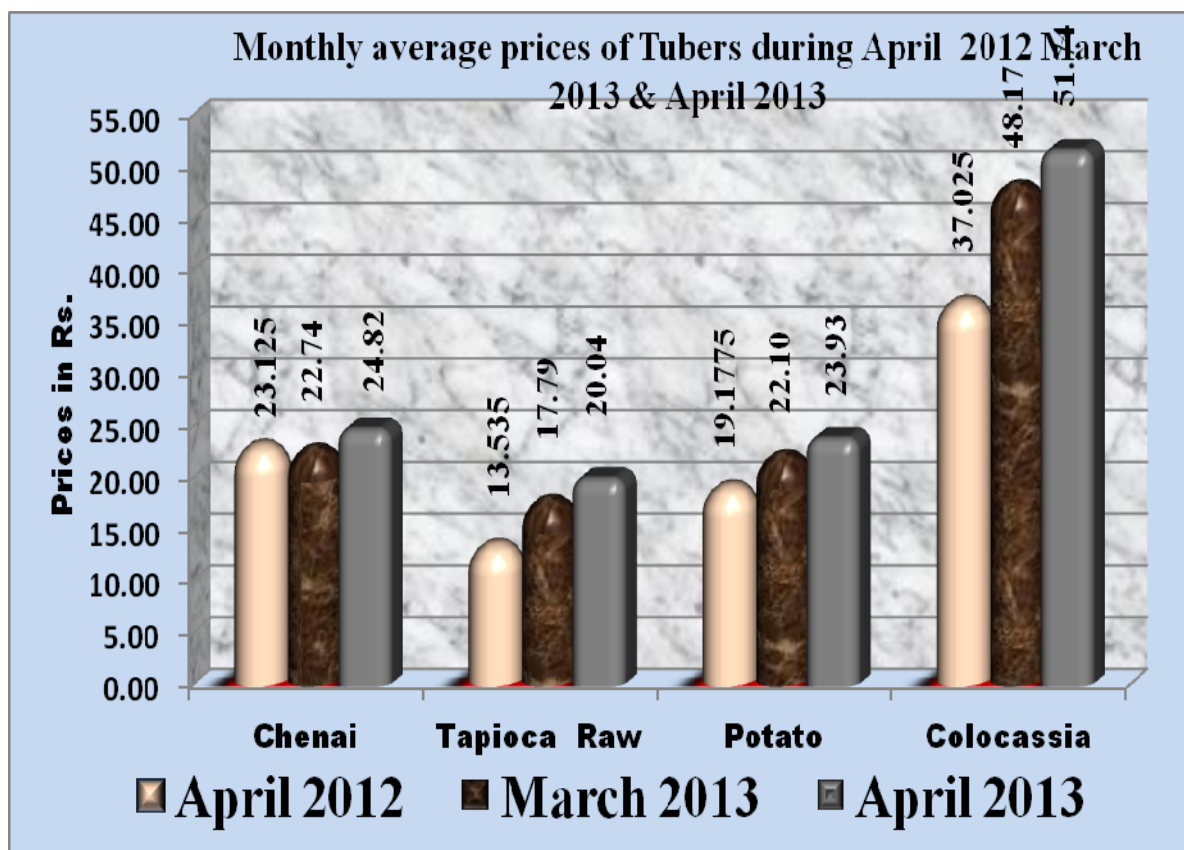
Comparison of State average retail prices of Tubers

An upward trend is seen in the retail prices of Tubers when compared with the prices of the previous month as well as the corresponding month of the previous year. During this period all items of Tubers has increased by 7% to 13 % when compared with the prices of the previous month. When compared with the prices of the corresponding month of the previous year the prices of all four items increased by 7% to 49%.

Table-6

Sl. No.	Name of Commodity	Unit	Prices (in Rs.) on			Percentage of Variation	
			April 2012	March 2012	April 2013	Over previous month	Over previous Year
1	Chennai	Kg.	23.13	22.74	24.82	9.15	7.34
2	Tapioca Raw	Kg.	13.54	17.79	20.04	12.67	48.06
3	Potato	Kg.	19.18	22.10	23.93	8.28	24.77
4	Colocassia	Kg.	37.03	48.17	51.74	7.40	39.73

Graph 6



7. VEGETABLES

Comparison of State average retail prices of Vegetables.

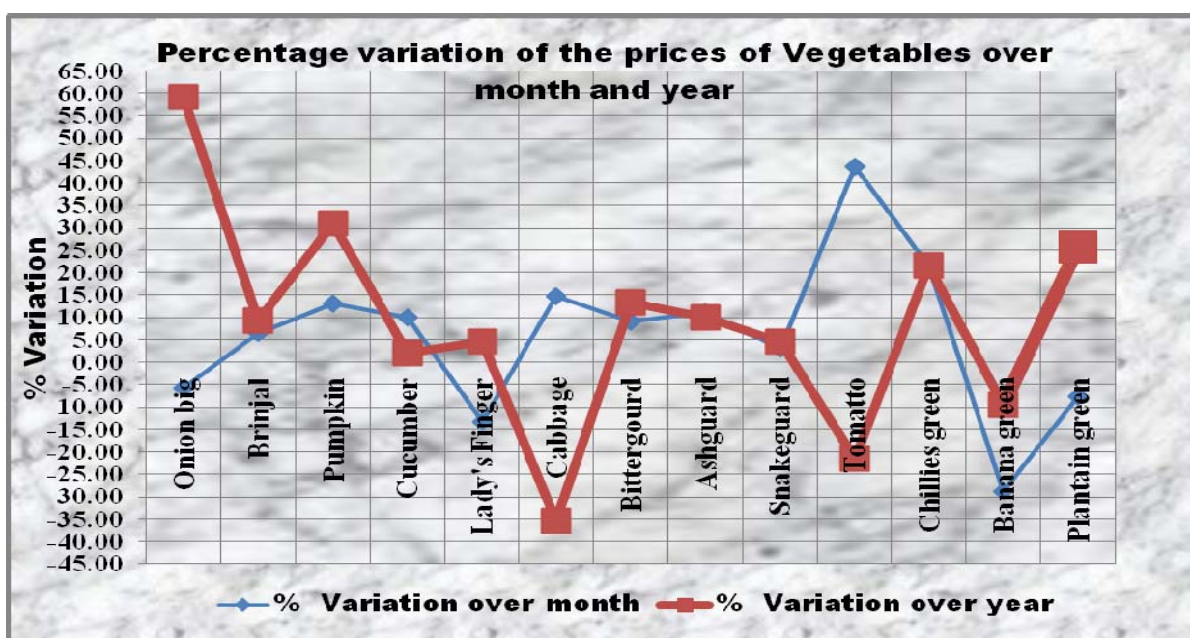
A mixed trend was observed during the month in the State average retail price of vegetables compared with that of previous month as well as the corresponding month of the previous year. The price of Onion big Lady's finger, Banana green, and Plantain green showed a downward trend of 5.68%,13.17%, 28.90% and 7.59% respectively while the prices of all the other items showed an upward trend when compared with the prices of the previous month.

The State average retail prices of Cabbage, Tomato and Banana green showed a negative trend while the prices of all other items of vegetables increased by 2% to 60%. Notable increase was seen in the prices of Onion big (59.21%), Pumpkin (31.08%) and Plantain green (25.85%) when compared with the price of the corresponding month of the previous year. The following table and diagram represents the prices and percentage variation over month and year of vegetables.

Table-7

Sl. No.	Name of Commodity	Unit	Prices (in Rs.) on			Percentage Of Variation	
			April 2012	March 2012	April 2013	Over previous month	Over previous Year
1	Onion big	Kg.	11.90	20.09	18.95	-5.68	59.27
2	Brinjal	Kg.	24.64	25.30	26.97	6.59	9.42
3	Pumpkin	Kg.	14.32	16.59	18.77	13.17	31.08
4	Cucumber	Kg.	19.61	18.22	20.03	9.93	2.13
5	Lady's Finger	Kg.	32.14	38.73	33.63	-13.17	4.62
6	Cabbage	Kg	33.20	18.73	21.48	14.70	-35.28
7	Bitter gourd	Kg.	33.43	34.76	37.89	9.02	13.35
8	Ash gourd	Kg.	17.04	16.83	18.73	11.30	9.95
9	Snake gourd	Kg.	25.38	25.76	26.52	2.97	4.51
10	Tomato	Kg.	29.14	15.93	22.88	43.63	-21.51
11	Chillies green	100gm	3.47	3.47	4.21	21.47	21.57
12	Banana green	Kg.	32.45	41.34	29.40	-28.90	-9.41
13	Plantain green	Kg.	18.29	24.91	23.02	-7.59	25.85

Graph-7



8. MISCELLANEOUS ITEMS

Comparison of State average retail prices of miscellaneous items

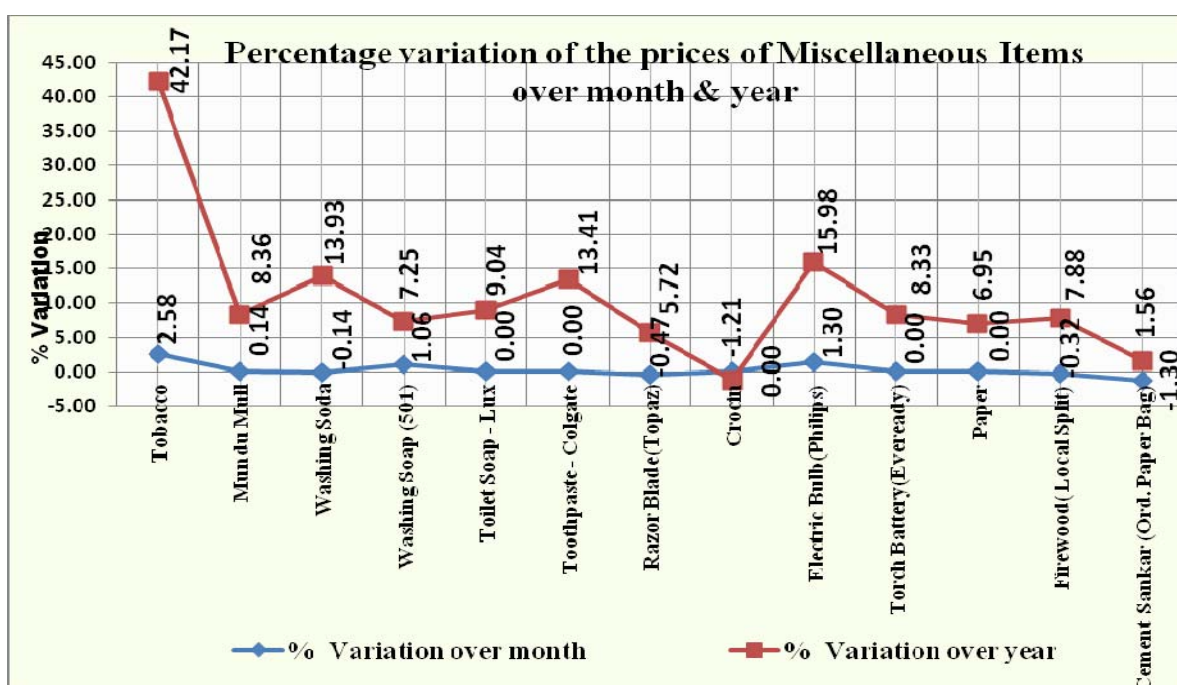
A mixed trend is still continuing in the retail prices of miscellaneous items during the period under report when compared with both the previous month and the corresponding month of the previous year. The price of washing soda, Razor Blade (Topaz), Firewood (Local split) and Cement-Sankar showed a negative change while the prices of all other items showed an upward trend when compared with the prices of the previous month.

When compared with the price of the corresponding month of the previous year all items except Crocin showed an increasing trend by 1% to 43% while the state average retail prices of Crocin decreased by 1.21%.

Table-8

Sl.No	Name of Commodity	Unit	Prices (in Rs.) on			Percentage Of Variation	
			April 2012	March 2012	April 2013	Over previous month	Over previous Year
1	Tobacco	Kg.	110.09	152.57	156.52	2.58	42.17
2	Mundu Mull	Each	98.04	106.08	106.23	0.14	8.36
3	Washing Soda	Kg.	32.43	37.00	36.95	-0.14	13.93
4	Washing Soap (501)	1/2 Bar	14.31	15.18	15.34	1.06	7.25
5	Toilet Soap - Lux	100 gm	19.20	20.93	20.93	0.00	9.04
6	Toothpaste - Colgate	100 gm	32.12	36.43	36.43	0.00	13.41
7	Razor Blade(Topaz)	5 nos	8.04	8.54	8.50	-0.47	5.72
8	Crocin	2 tabs	2.68	2.65	2.65	0.00	-1.21
9	Electric Bulb(Philips)	40W	11.73	13.43	13.61	1.30	15.98
10	Torch Battery (Eveready)	Each	14.04	15.21	15.21	0.00	8.33
11	Paper	24Sheet	13.13	14.04	14.04	0.00	6.95
12	Firewood(Local Split)	Quintal	349.17	377.86	376.67	-0.32	7.88
13	Cement - Sankar (Ord.Paper Bag)	Packet	356.28	366.60	361.85	-1.30	1.56

Graph 8



ANNEXURE

Statement Showing The State Average Retail Prices Of Essential Commodities							
for The month of April 2013							
Sl. No.	Name of Commodity	Unit	Prices (in Rs.) on			Percentage of Variation	
			April 2012	March 2012	April 2013	Over month	Over year
(1)	(2)	(3)				(7)	(8)
	A. RICE - Open Market						
1	Red - Matta	Kg	24.31	36.60	36.81	0.58	51.45
2	Red - Chamba	Kg	22.90	34.73	35.33	1.72	54.29
3	White - Andra Vella	Kg	24.90	30.09	30.07	-0.07	20.77
	B. PULSES						
1	Green gram	Kg	66.18	72.91	74.11	1.64	11.98
2	Green gram dhal	Kg	71.73	82.64	82.63	-0.02	15.19
3	Black gram split w/o husk	Kg	65.52	63.68	63.18	-0.79	-3.57
4	Black gram split with husk	Kg	64.00	61.75	61.21	-0.88	-4.36
5	Redgram	Kg	52.41	69.29	68.20	-1.57	30.12
6	Dhall(Tur)	Kg	68.20	74.86	76.30	1.93	11.88
7	Bengalgram Bold	Kg	56.04	64.53	61.79	-4.25	10.26
8	Bengalgram Small	Kg	51.60	59.69	58.05	-2.76	12.49
9	Peas Dhall	Kg	37.22	44.08	44.36	0.61	19.19
	C. OTHER FOOD ITEMS						
1	Sugar(O.M)	Kg.	31.61	34.01	34.15	0.41	8.04
2	Milk (Cow's)	Ltr.	27.57	32.68	32.68	0.00	18.53
3	Tea (Kannan Devan)	500gms	111.64	126.27	128.45	1.72	15.05
4	Coffee Powder (Brook Bond Gr.Label)	500gms	131.36	139.93	140.52	0.42	6.98
5	Baby Food(amul)	Kg	264.50	282.60	283.30	0.25	7.11
6	Egg(Hens) White Lagon	Dozen	32.67	43.40	38.87	-10.43	18.98
7	Mutton with bones	Kg	350.00	394.57	396.78	0.56	13.37
	D. OIL AND OIL SEEDS						
1	Coconut oil	Ltr.	71.30	71.10	70.54	-0.80	-1.08
2	Groundnut oil	Ltr.	116.29	137.18	136.70	-0.35	17.55
3	Refined oil	Ltr.	86.77	94.79	94.23	-0.58	8.60
4	Gingelly oil	Ltr.	132.88	179.13	185.02	3.29	39.24
5	Coconut without husk	10 nos	86.79	92.36	90.68	-1.82	4.48
	E. SPICES AND CONDIMENTS						
1	Corriander	Kg.	65.30	81.39	85.89	5.54	31.53
2	Chillies dry	Kg.	77.18	84.63	85.97	1.58	11.38
3	Onion small	Kg.	19.09	35.74	45.79	28.10	139.85
4	Tamarind without seeds loose	Kg.	89.16	78.08	78.79	0.90	-11.63
5	Cuminseed	100gm	22.26	23.26	22.91	-1.49	2.92
6	Mustard	100gm	6.45	7.63	7.43	-2.66	15.07
7	Methy	100gm	6.36	7.01	6.97	-0.56	9.72
8	Turmeric	100gm	11.44	12.72	12.98	2.05	13.51
9	Garlic	100gm	5.17	4.83	5.22	7.88	0.87

Sl. No.	Name of Commodity	Unit	Prices (in Rs.) on			Percentage of Variation	
			April 2012	March 2012	April 2013	Over month	Over year
	F. TUBERS						
1	Chenai	Kg.	23.13	22.74	24.82	9.15	7.34
2	Tapioca Raw	Kg.	13.54	17.79	20.04	12.67	48.06
3	Potato	Kg.	19.18	22.10	23.93	8.28	24.77
4	Colocassia	Kg.	37.03	48.17	51.74	7.40	39.73
	G. VEGETABLES						
1	Onion big	Kg.	11.90	20.09	18.95	-5.68	59.27
2	Brinjal	Kg.	24.64	25.30	26.97	6.59	9.42
3	Pumpkin	Kg.	14.32	16.59	18.77	13.17	31.08
4	Cucumber	Kg.	19.61	18.22	20.03	9.93	2.13
5	Lady's Finger	Kg.	32.14	38.73	33.63	-13.17	4.62
6	Cabbage	Kg	33.20	18.73	21.48	14.70	-35.28
7	Bitter gourd	Kg.	33.43	34.76	37.89	9.02	13.35
8	Ash gourd	Kg.	17.04	16.83	18.73	11.30	9.95
9	Snake gourd	Kg.	25.38	25.76	26.52	2.97	4.51
10	Tomatto	Kg.	29.14	15.93	22.88	43.63	-21.51
11	Chillies green	100gm	3.47	3.47	4.21	21.47	21.57
12	Banana green	Kg.	32.45	41.34	29.40	-28.90	-9.41
13	Plantain green	Kg.	18.29	24.91	23.02	-7.59	25.85
	H. MISCELLANEOUS ITEMS						
1	Tobacco	Kg.	110.09	152.57	156.52	2.58	42.17
2	Mundu Mull	Each	98.04	106.08	106.23	0.14	8.36
3	Washing Soda	Kg.	32.43	37.00	36.95	-0.14	13.93
4	Washing Soap (501)	1/2 Bar	14.31	15.18	15.34	1.06	7.25
5	Toilet Soap - Lux	100 gm	19.20	20.93	20.93	0.00	9.04
6	Toothpaste - Colgate	100 gm	32.12	36.43	36.43	0.00	13.41
7	Razor Blade(Topaz)	5 nos	8.04	8.54	8.50	-0.47	5.72
8	Crocin	2 tabs	2.68	2.65	2.65	0.00	-1.21
9	Electric Bulb(Philips)	40W	11.73	13.43	13.61	1.30	15.98
10	Torch Battery(Eveready)	Each	14.04	15.21	15.21	0.00	8.33
11	Paper	24 Sheets	13.13	14.04	14.04	0.00	6.95
12	Firewood(Local Split)	Quintal	349.17	377.86	376.67	-0.32	7.88
13	Cement - Sankar (Ord.Paper Bag)	Packet	356.28	366.60	361.85	-1.30	1.56