



GOVERNMENT OF KERALA

**REPORT ON
NPI-ORPHANAGE /
CARE HOME SURVEY
2013-14**



**SURVEY DESIGN DIVISION
DEPARTMENT OF ECONOMICS AND STATISTICS
KERALA**



Government of Kerala

**Report on
NPI-Orphanage / Care home Survey
2013-14**

Survey Design Division

Directorate of Economics & Statistics

April 2016

*Directorate of Economics and Statistics, 5th Floor, Vikas Bhavan, Thiruvananthapuram-695033.
Telephone:0471-2305318, Fax:0471-2305317*

PREFACE

In fact, a meager part of our society is categorically denied to relish the basic necessities of human being due to the devilish activities of their extended family. Fortunately, the inception of care homes, in different manifestation, such as orphanages home for the infirm, elderly and destitute, crèche for economically backward and differently abled children etc has reduced the plight of this stratum to some extent in our state. The myriad Government as well as NGO Care homes has been playing a major role in rehabilitating this stratum across the state for a long time. The care homes not only stand as an “abode of peace” but also secular in nature to protect and care for those who have been thrown away from the all walks of life.

A comprehensive report regarding the nature of functioning of these institutions, the problems faced by these institutions and their immense presence throughout our state was meticulously prepared and published by our Department in 2007. The report was a huge success and well received instantly and the name of our Department has been etched in golden letters in the History of Kerala. We believe that our previous report may have been benefitted by the Data seekers and also the warm responses from all quarters made us to rethink to bring out a new report with present updates.

Field work was carried out by the investigators under the direct supervision of the Taluk level officers and District level officers of the Department during 2013-14. The entire activities in connection with this survey were done under the aegis of the Survey and Design Division of the Directorate of Economics and Statistics. The 13th FC Award has provided the fund to realise this Care Homes Survey of 2013-14. This report is prepared by Sri.C.Anilkumar, Research Assistant of the Survey Design Division.

First and foremost, my sincere thanks to the Survey Coordination Committee of the Directorate for their enduring effort for designing the schedules. My special thanks to Sri.K.K.Mani, Member Secretary, and Orphanage Control Board for his technical assistance. Sri.Babu.P.V, Additional Director and Smt.C.S.Latha Kumari, Joint Director, Sri.K.R.Pradeepa Chandran Nair & Sri.S.Kiran, Research Officers, Sri.C.Anil Kumar, Research Assistant, Sri.Biju.C.C Statistical Assistant Computer Division, Sri. Shibu.S, Sri.Shanu.S, Sri.Manoj.K.R & Smt.Shibi.C.R, Statistical Assistants of the Survey Design Division of the Directorate of Economics and Statistics and those who have worked hard behind the scenes in preparation of this report is really appreciated.

I hope the report will be useful to, Planners, Policymakers and Researchers and other data users.

Suggestions for improvement are most welcome.

*V.Ramachandran
Director General*

Contributions

OFFICERS OF SURVEY DESIGN DIVISION	
Additional Director	P.V.Babu
Joint Director	C.S.Lathakumari
Research Officer	Kiran.S
Research Officer	K.R. Pradeepachandran Nair
Research Assistant	C. Anilkumar
Statistical Assistant - Grade.I	Manoj.K.R.
Statistical Assistant - Grade.I	Jincy Rani. T. S.
Statistical Assistant - Grade.I	Shibi. C. R

Supervision - District Level	Deputy Directors Research Officers
Supervision - Taluk Level	Taluk Statistical Officers and Statistical Inspectors
Data Collection	Statistical Investigators

Software development	Biju. C.C, Statistical Assistant - Grade.I, Computer Division
----------------------	--

Contents

Chapter	Item	Page No
1	Introduction.....	9
2	General Aspects.....	13
3	Facilities in care homes/Orphanages	19
4	Inmates in Care homes/Orphanages.....	21
5	Financial Aspects.....	27
6	Major Findings.....	29
7	Detailed Tables.....	31

Chapter 1

INTRODUCTION

1.1 INTRODUCTION

1.1.1 The state of Kerala is more or less at par with the developed countries of the world in the socio-economic and cultural fronts. But several socio – economic indicators during the recent past have shown a changing mindset of the people of Kerala regarding their attitude towards the weaker sections of the society, the orphans, the aged and their wellbeing.

1.1.2 Keralites used to boast of their joint family system which has already neared extinction. The transition of the society from a joint family system to nuclear families have necessarily loosened the bond of love and affection that existed among the family members .In this paradigm shift, people have become more self-centered and they are least bothered about the agony of others.. In contrast to that of a joint family the entire responsibility of the family is vested with the head and spouse of the family. In their struggle for existence, in majority of the families both the spouse engage in work, leaving them no other option than to entrust their younger ones and aged parents in the shelter of paid homes or day care centers.

1.1.3 A large number of people in our society still suffer from lack of care and shelter from their near and dear ones. The orphans and destitute are not the creation of destiny, nevertheless, there is an erosion of humanitarian values, and a prevailing placidity in the intimate human relations. It is our society which is responsible for the ill-fated ones. Many of them, including infants are abandoned by their parents and near and dear ones due to various reasons like diseases, poverty or many other reasons. Now a days lot of institutions coming up for extruding services of nursing assistance at home, providing domestic helpers, Child care etc. and become a profitable economic activity. In this context a study on care homes /orphanages in Kerala is very relevant.

1.1.4 There are numerous institutions in the state operating Care homes and Orphanages under Government or private agencies. Social Justice Department has implemented various schemes to rehabilitate and render assistance to destitute.

1.1.5 The Department of Economics and Statistics conducted this survey to create a data base about the various institutions that function for the aged people, orphans, physically handicapped and other destitute.

1.2 Objectives of the survey

- ✚ To ascertain the number of care homes for orphans, destitute and aged people and rescue homes functioning in the state
- ✚ To ascertain the number of inmates residing in these homes.
- ✚ To collect the information of the current status of Children under schooling age who reside in these homes.
- ✚ To study the management of these care homes, the infrastructure facilities provided in these homes, fee structure and the financial assistance they receive from the state government.
- ✚ To collect information on employment generation in care homes.
- ✚ To study about the financial aid they receive from within the state, outside the state and from foreign countries.
- ✚ To study the mode of admission and fee structure of these institutions.
- ✚ To study the problems faced by these institutions.
- ✚ To study the facilities provided to the inmates in these homes.

1.3 Conduct of the survey

1.3.1 The fieldwork of the survey was conducted in all the 14 districts in the state by the investigators of this department in addition to their normal duties under the guidance and instructions from the Directorate. The Deputy Directors of the districts were entrusted with the responsibility for the conduct of the survey at the district level. Taluk Statistical Officers and

Statistical Inspectors at the taluks supervised the field works and the other works connected with the survey.

1.3.2 The survey was conducted during the period from 2014 February 15th to 2014 March 15th. The data entry of the schedules was also done in the district and taluk statistical offices.

1.4 Methodology

1.4.1 The statistical investigators visited all the offices of the Social Justice Department, Municipalities/Corporations/Grama panchayaths and other related institutions where the information of Care homes and Orphanages likely to be available and listed the registered and unregistered care homes for orphans, destitute and the aged people.

1.4.2 The details of the non-registered institutions were collected through local enquiry also. A list of these homes was prepared at Municipalities/Corporations/Grama panchayath level. All these institutions were surveyed by the investigators and information collected in a schedule designed for this survey.

Chapter 2

GENERAL ASPECTS

2.1 An over view of Care homes/Orphanages in Kerala

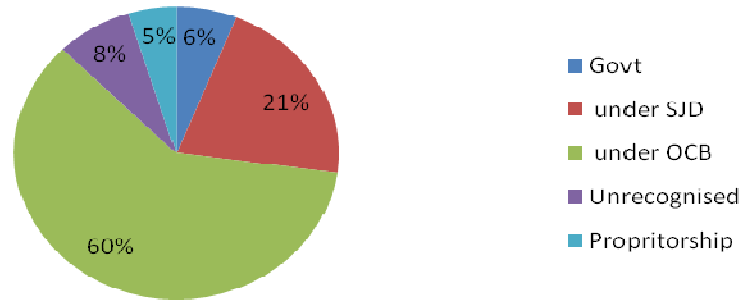
2.1.1 According to the survey 2260 care homes /orphanages are working in the state.

Statement No.2.1- District wise no of Care homes/orphanages in Kerala

Sl No	Name of District	No of Care homes/Orphanages	Percentage
1	Kasargode	70	3.10
2	Kannur	154	6.81
3	Wayanad	98	4.34
4	Kozhikode	122	5.40
5	Malappuram	136	6.02
6	Palakkad	164	7.26
7	Thrissur	260	11.50
8	Eranakulam	383	16.95
9	Idukki	151	6.68
10	Kottayam	238	10.53
11	Alappuzha	93	4.11
12	Pathanamthitta	91	4.03
13	Kollam	101	4.47
14	Thiruvananthapuram	199	8.80
	Total	2260	100

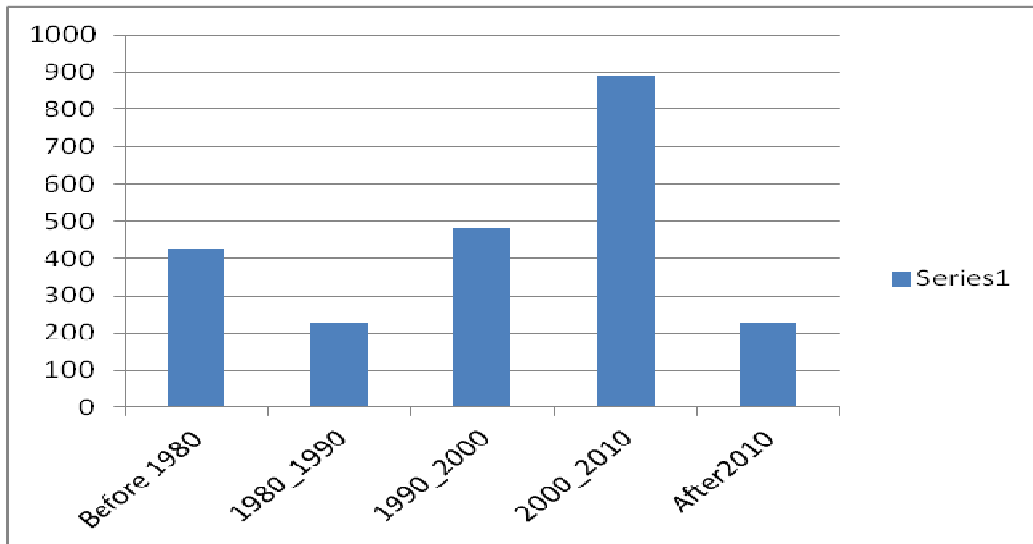
2.1.2 Among the 2260 care homes/orphanages in the state, 1367(60.5%) are under the direct control of Orphanage Control Board, and 136 institutions under Government control, 477 are under Social Justice Dept. 173 are unrecognized and 107 institutions are under Proprietorship.

Carehomes/Orphanages according to control under different agencies



2.1.3 Most of the care homes/orphanages started functioning between the years 2000 and 2010, ie, 819 Nos. Only 224 institutions have started functioning after the year 2010. No of care homes/orphanages according to the year of starting is given in the table 1.

Number of Care homes according to year of Starting



2.1.4 Among the 2017 care homes/orphanages which are not under Government control, 1312 are under Charitable Societies, 690 by Trusts and 15 are under other agencies.

Statement No 2.3-Details of care homes/orphanages run by the religious institutions

Religion	No of care homes/Orphanages	Percentage
Hindu	80	3.5
Christian	1180	52.2
Muslim	384	17.0
Non religious	616	27.3
Total	2260	100

2.1.5. 1644 institutions in the State are run by religious institutions of which 1180 nos (72%). ie, the majority are under by the Christian community, 384 by the Muslims and 80 nos are owned by the Hindu community. Eranakulam district has the highest number of care homes run by Christian and Hindu religious institutions. But Malappuram district has highest number of care homes/orphanages run by Muslim religious organizations

2.1.6. 409 institutions have registered under Foreign Contribution Regulation Act. It can be seen that 974 institutions have received assistance in the form of grant-in-aid.

Statement 2.4-Type of care homes/Orphanages

Type of care homes	Number	Percentage
Child	1220	53.98
Disabled	342	15.13
Old age	521	23.05
Women	102	4.51
Others	75	3.32
Total	2260	100

2.1.7 According to the category of care homes it can be noticed that more than half of care homes, 1220 nos. are orphanages for children, 342 are

care homes for the disabled, 521 old age homes, 102 care homes for Women and 75 institutions belong to other categories.

2.2 Details on building and its area

2.2.1 Among the 2260 care homes / Orphanages, 1959 of them function in own buildings, 105 of them function in Government owned buildings while 131 of them are housed in rented or leased buildings. 65 care homes function in rent free buildings.

Type of ownership	No of Institutions	Percentage
Owned	1959	86.7
GOVT	105	4.6
Rent Lease	131	5.8
Rent Free	65	2.9
Total	2260	100

2.2.2 These orphanages/care homes are classified into three types based on the types of buildings in which they function, pucca, semipucca and kutchra. Accordingly there are 2106 pucca, 148 semipucca and 6 kutchra buildings.

2.2.3 On classifying these institutions on the basis of their building area, it can be seen that majority of these buildings ie, 636 of them have building area less than 2000 sq.ft , 495 Nos. have their building area between 2001 and 3250, 620 Nos. have their building area between 3251 and 6000 sq. ft. and only 509 Nos. have their building area above 6000 sq.ft.

2.2.4 When the compound area of these institutions are considered, majority fall in the category of 71 to 200 cents ie, 678 Nos. 605 institutions have a compound area of below 30 cents , 534 institutions can be classified under those having a compound area between 31- 70 cents . Only 440 institutions function within a compound area more than 200 cents.

2.3 Fitness certificate and sanitation certificate

2.3.1 2000 institutions are having fitness certificate issued by the authorities, ie, these institutions are maintain the standards prescribed by the authorities. Moreover 2045 institutions possess the sanitation certificate issued by the authorities, ie, these institutions possess the minimum required sanitation facilities.

2.4 .Other activities of the institutions

2.4.1 These institutions do not limit their service to providing shelter to the needy alone. They also run other services like education, health care and other activities. As per the survey result there are 2398 educational institutions run by these care homes, 491 health care institutions and 1826 other institutions. There are altogether 4715 such institutions are run by these agencies.

2.5. Problems faced by the institutions

2.5.1 These institutions are having several operational problems like financial, legal and local issues from the public .It is reported that the majority of the institutions face financial problems, ie, 964 institutions facing shortage of funds, 31 units face legal problems, 13 institutions face local issues from the public, 51 institutions face both financial and legal problems whereas 11 confront with both financial and problems faced from the public. About 1119 institutions are in trouble with some problems either within or outside the institutions.

Chapter 3

Facilities in care homes / Orphanages

3.1 Facilities provided to the inmates in care homes/Orphanages

3.1.1 The primary requirement of the inmates of these homes is getting sufficient food regularly. 2201 homes are well equipped with adequate infrastructure to provide regular supply of food to the inmates.

3.1.2 In 2144 care homes are having mess facility. Separate dining facility for women is provided in 1438 institutions. The essential items like soaps and other toiletry items are providing to the inmates in 2149 institutions. In 1660 institutions separate toilet facility for women is provided.

3.1.3 In 2055 institutions are having telephone facilities.

3.1.4 It can be noticed that library and reading room have been provided in 1691 institutions. Moreover, in 2139 care homes newspapers are available and in 1708 institutions other publications are also available. The other sources of entertainments like radio /television are available in 1926 institutions.

3.1.5 In 1536 care homes, facilities for sports activities are available for their inmates. Similarly about 497 institutions provide health club facilities

3.1.6 Majority of institutions, ie 2076 provide medical facilities to the inmates. In about 1884 institutions, the service of doctor is made available.

3.1.7 In 977 institutions uniforms have been provided to its inmates. 801 institutions provide Vocational Training.

3.1.8 965 care homes possess own vehicles whereas 662 care homes use rented vehicles. 633 of these institutions do not own any kind of vehicles.

Chapter 4

Inmates in Care homes/Orphanages

4.1 Nature of inmates in Care homes/Orphanages

4.1.1 The inmates of these homes belong to different social backgrounds. There are 29666 inmates residing in these institutions. 2666 inmates are orphan, 9235 inmates are survived by their mothers whereas 4946 have father alone as their blood relation alive. 2374 of these inmates are abandoned ones. On the contrast 10445 inmates are surrendered ones.

4.1.2 Among the total inmates of these orphanages, 7574 inmates possess orphan certificate, 8970 possess non-orphan certificate, 1206 are abandoned certificate holders, 3178 surrender certificate holders and 8738 belong to other category.

Statement-4.1 Marital status of inmates in care homes

Marital Status	No of inmates	Percentage
Never Married	72620	82.34
Married	6523	7.4
Divorced	967	1.1
Separated	2160	2.45
Widow	4403	4.99
Widower	1519	1.72
Total	88192	100

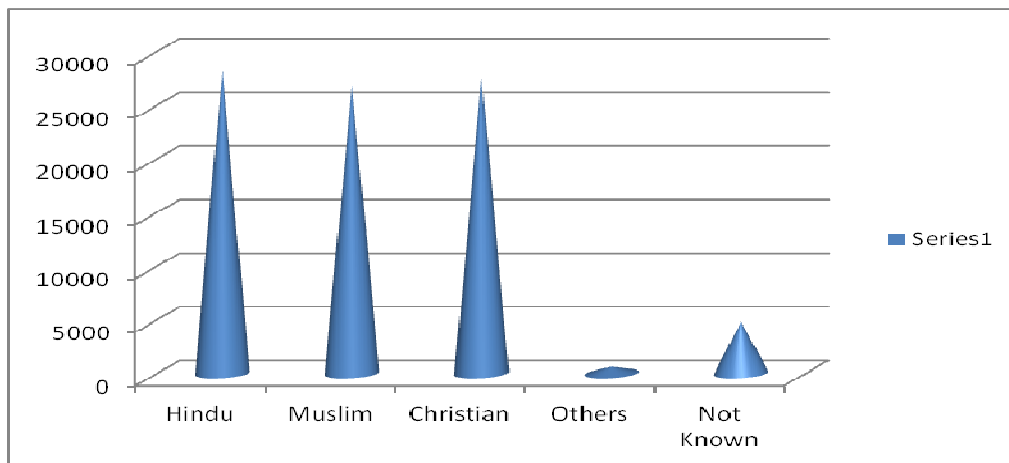
4.1.3 Admission to these care homes are categorized into four types, Majority of the inmates are admitted at free of cost, ie, 82915 inmates. About 1759 inmates are admitted based on fees charged for their accommodation whereas a nominal fees is charged on 2863 inmates. Admission based on Sponsorship to some of the inmates residing in these care homes ie; about 655 members.

4.1.4 There are 1741 inmates from Tamilnadu, 1139 numbers from Karnataka, 310 from Andhra Pradesh, 403 from West Bengal, 274 from Odisha 96 from Assam, 287 from Uttar Pradesh, 468 from Bihar and 3404 inmates belongs from other states. 250 inmates in these homes are from other countries.

4.1.5 7580 orphans and 13350 inmates are opted these homes since they were denied of these facilities at home. It is a fact that the persons who take admissions to these homes are guided by factors beyond their control, ie, 26893 (30.5) of the inmates were took admission to these homes due to the severe poverty. The shelter of these homes provides them security and regular food.

4.1.6 16319(18.5%) of the inmates took to these homes since there are no one to look after them. 306 inmates were admitted to these homes since their relatives are residing abroad where as 438 inmates were in these homes since their relatives are presently away from home. The ill- treatment meted out from the family members, is another reason for 1574 inmate to choose these homes. Among these inmates, 7589 members are mentally challenged, 5914 suffer from mental illness, 175 due to autism, 239 suffer from Alzheimer’s disease. About 2662 of the inmates are admitted to these homes due to other illnesses. 5153 of the inmates have sought admission to these homes due to other reasons.

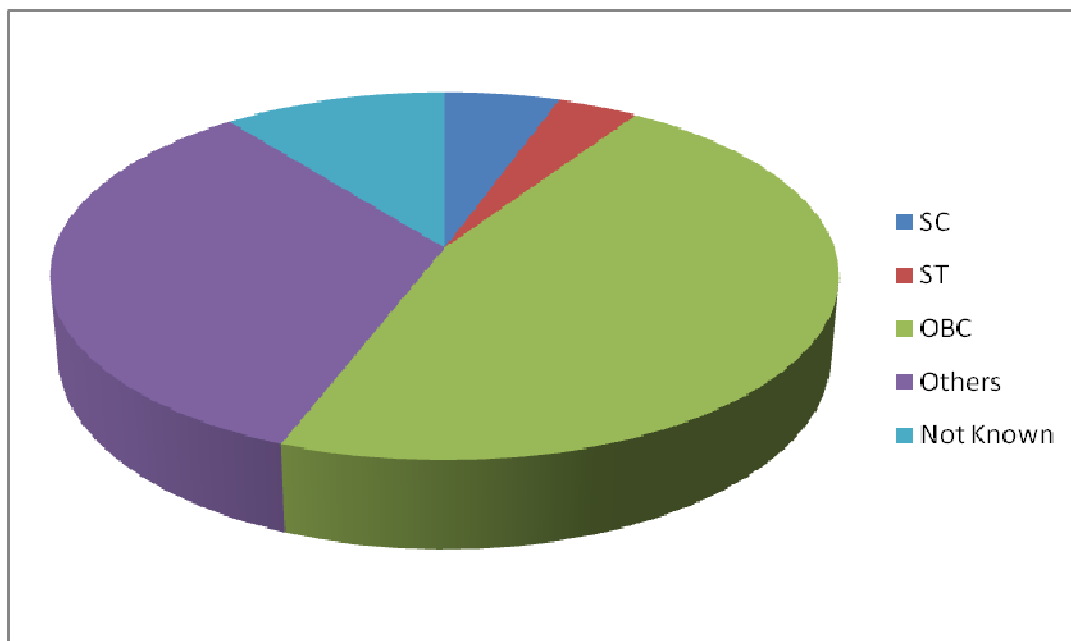
Number of Inmates in Care Homes According to Religion



4.1.7 The inmates of these institutions belong to different religious beliefs. It is remarkable that the number of inmates from Hindu, Christian and Muslim community are more or less equal, ie, 32.14% belong to Hindu community , 31.21% belonging to Christianity and 26869(30.47%) to the Muslim community. Only 627 inmates belong to other religions and 4819 inhabitants are unaware of their religious background.

4.1.8 The social groups of the inmates of these institutions were also collected during the survey. Majority of the inmates belongs to other backward caste category, ie, 40937 nos, followed by the inmates belonging to the general category, ie, 29533 nos. The members of SC and ST communities are 4803 and 3402 nos respectively. About 9517 inmates are not known their social background.

Number of Inmates in Care Homes According to Social group



4.1.8 Educational background of those residing in these homes are studied in the survey and found that the majority of the inmates are schooling only up to the primary level, ie, 49777(56.44%). And 17322(19.64%) inmates hold SSLC qualification and only 6734(7.7%) of them have Higher Secondary level. 13051(14.8%) inmates are illiterates. Graduates and Post Graduates

are numbered 965 and 343 respectively. It is remarkable to see that the number of inmates (53492) who were below 18 years and having education at least some level.

Statement 4.2-Details of age group wise Educated inmates.

Age group	Male	Percentage	Female	Percentage	Total	Percentage
below 18	26863	50.22	26629	49.78	53492	95.03
		75.75%		67.11%		71.19%
19-60	4928	41.24	7022	58.76	11950	68.18
		13.9%		17.7%		15.90%
61-70	1817	38.46	2908	61.54	4725	67.43
		5.12%		7.33%		6.29%
71-80	1316	38.73	2082	61.27	3398	68.62
		3.71%		5.25%		4.52%
81-91	481	33.9	938	66.1	1419	66.59
		1.36%		2.36%		1.89%
above90	56	35.67	101	64.33	157	54.7
		0.16%		0.25%		0.21%
Total	35461	47.19	39680	52.81	75141	85.2

4.1.9 Inmates in Care homes excluding Day care for Old age, there are about 87098 inmates, out of which 72342(83.06%) inmates are having relatives. 8168(9.38%) inmates are not having relatives at all 6588 inmates informed that they do not know whereabouts of their relatives.

Statement 4.3-Information about the relatives of the inmates in Care homes

Category of institution	No of inmates						Total
	Having relatives	Percentage	having no relatives	Percentage	unknown about relatives	Percentage	
Children	47313	92.82	2728	5.35	934	1.83	50975
Disabled	11270	70.63	2006	12.57	2681	16.80	15957
Old Age	8638	66.84	2521	19.51	1765	13.66	12924
Women	2466	74.84	323	9.80	506	15.36	3295
Others	2655	67.27	590	14.95	702	17.79	3947
Total	72342	83.06	8168	9.38	6588	7.56	87098

4.1.10 About 9110 inmates have gone out of these institutions due to various reasons during 2012-13. Out of the out gone inmates residing within the country are 375 inmates got employed, 307 got married, 197 adopted and 7997 inmates left these homes for other reasons.

4.1.11 Some of the inmates have migrated outside the country. 48 inmates got employed abroad, 2 were married abroad, 24 adopted and 160 inmates went abroad for other reasons.

4.1.12. 286 of the inmates went absconding and 2075(23.82%) inmates died during the period under study.

Statement No 4.4-Number of inmates gone outside the institution

Category of institution	No of inmates gone outside the institution	
	No	% out of total inmates
Children	6362	12.70
Disabled	968	9.45
Old Age	994	17.49
Women	392	14.26
Others	394	19.23
Total	9110	13.17

4.1.13 Some of the institutions also run certain economic activities by establishing manufacturing units/enterprises. This equipped the inmates with one or other type of jobs training and engages in economic activities. There are about 405 such institutions altogether. A total of 9844 inmates take active participation in the functioning of these units. About 2937 inmates engaged in agriculture activity. 911 in Handloom/Handicraft, 1389 are working in the manufacturing units owned by these institutions. 2307 inmates engage related activities of tailoring. 1242 of the inmates engaged as artistic work whereas 151 work in catering units followed by 92 in trading and 56 in repair service. Altogether 759 of the inmates engage in other than types of activities mentioned above. 27.71% of the inmates in women care

homes and 21.14% of inmates in care home for disabled involved in different activities of these manufacturing units/enterprises.

Statement No 4.5 Number of inmates involve in different activities in the enterprises run by the care homes

Category of institution	No of inmates involved in different activities in the enterprises run by the care homes	
	Number of inmates	% over total inmates
Children	4327	8.49
Disabled	3374	21.14
Old Age	904	6.99
Women	913	27.71
Others	326	8.26
Total	9844	11.30

4.1.14 About 18823 persons are working in these care homes in different category, including 5294 individuals rendering their service free without getting any monetary benefit.

Statement No 4.6-Employment generated in Care homes 2012-13.

Category	Male	Female	Total
Office Staff	1809	2565	4374
Watchman/Peon/Attenders/Sweepers	1012	1191	2203
Teachers/Draftsman	1017	1586	2603
Doctors	499	318	817
Nurse	114	1084	1198
Physiotherapist	71	119	190
Councilors	278	417	695
Social Workers	342	499	841
Drivers	729	20	749
Cook	832	2374	3206
Others	691	1256	1947
Total	7394	11429	18823

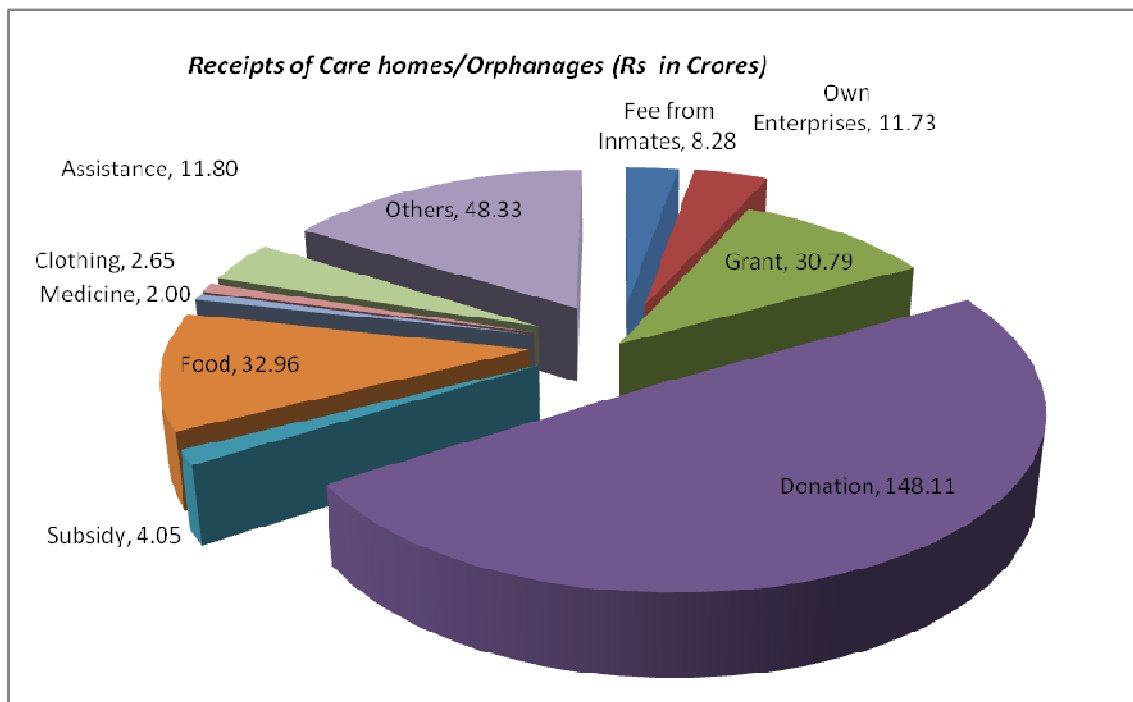
Chapter 5

Financial Aspects

5.1 Financial Aspects

5.1.1 The total income by various means is ascertained as 263.08 Crores rupees. The major portion of income is received as donation from individuals/others and as foreign assistance (148.11 core rupees) ie, 56.3%. The second major source of income to these institutions is from other receipts such as assistance from state/central government, LSGD, foreign remittance etc. (Rs 48.33 Crores).

Details of Receipts of Care homes/Orphanages



5.1.2 The details of expenditure of these homes were also collected during the survey. For the year 2012-13 these institutions spent an amount of Rs 264.28 Crores. It is a noticeable fact that major portion of the income is spent on food (ie, 95.45 Crores rupees).

5.1.3 These institutions have total assets worth Rs. 4335.51Crores rupees. These institutions own land and buildings worth Rs.4175.90Crores. The furniture and fixtures of these institutions are valued to the tune of 71.88Crores. The machinery and equipment possessed by these institutions are valued at Rs. 15.05Crores. The vehicles and other assets together constitute Rs 40.57crores and Rs 32.12Crores respectively.

5.1.4 The State Government also provides aid to these institutions by various means. 1171 of these institutions are provided with ration permit for subsidised rice supply, 1000 for wheat and for 586 institutions with permit for sugar supply at subsidized rate. The provision for subsidized gas connection is available in 729 institutions and subsidy on electricity charges is provided for 1041 homes. Also 263 of these homes have water connection in concessional rates. Vehicle tax, Building tax and land tax have been exempted to 189, 1111 and 409 institutions respectively.

Chapter 6

Major Findings

6.1 Major Findings

- ✚ There are 2260 care homes/orphanages in Kerala with maximum nos in Eranakulam District, 383 and minimum in Kasaragode with 70.
- ✚ A major portion 224Nos,of these institutions in Ernakulum district are run by Christian religious group.
- ✚ A larger percentage of these care homes/ orphanages are for children and old age .
- ✚ In about 52% of these institutions admission is voluntary, 24% admission is statutory. In 1268 institutions also admit the persons on the basis of recommendation by others.
- ✚ 2129(94.20%) institutions are functioning in Owned/Government/rent free buildings.
- ✚ (93.2%) of these care homes/orphanages are working pucca buildings.
- ✚ 1121(50%) numbers of the institutions have a compound area more than 70 cents.
- ✚ 88% and 90% of these care homes/orphanages have fitness certificate and Sanitation certificate respectively.
- ✚ There are 2398 educational institutions, 491 health institutions and 1826 other type of institutions run by the Management of care homes /orphanages.
- ✚ 42.65% of these care homes /orphanages are in financial problems.
- ✚ Most of these institutions provide the major essential facilities to their inmates such as regular food(3 times a day), mess, Essential items like soap, oil, etc, telephone, news paper , medical aid etc.
- ✚ There are 29666 inmates residing in the orphanages ,who are admitted on varies reasons, such as being orphan(9%),having only mother or father(47.8%),abandoned (8%)or surrendered(35.2%).

- ✚ 70.5% of the orphanages are possessing either orphan or non orphan or abandoned or surrender deal certificate.
- ✚ Out of 88192 inmates in care homes, 82.3% inmates are under the category of never married.
- ✚ 94% of the inmates in care homes are admitted without charging any fees.
- ✚ 9.5%, a nominal part of the inmates in care homes are from other states also.
- ✚ 72.7%(64142) of the inmates in care homes reached in the institution due to either poverty, orphanage, no one to look after or no facility at home .Different type of illness lead 8990(10.2%) persons to the care homes.
- ✚ Out of 50975(57.8%) of the inmates in children's homes, orphanage/poverty/no facility at home lead 92.34 %(47085) of the children to these care homes.
- ✚ As the social groups of the inmates are considered 46.4% are from other backward community.
- ✚ Out of 75141 literate inmates 39680(52.8%) persons are females. 343 inmates are having post Graduation /professional degree.
- ✚ 49339 (56.6%) and 3561(4.1%) inmates in Care homes in the age group 7-18 having relatives and not having or unknown about the relatives respectively.
- ✚ 46313((90.85%) of the inmates in the children's care home are having relatives .
- ✚ 4286((33.16%) of the inmates in the old age homes are neither having relatives nor unknown about the relatives.
- ✚ 423 inmates went outside the care home for employment during 2012-13.
- ✚ 984((11.16%) inmates involved in different activities in the manufacturing units or other types of enterprises run within the institutions.

DETAILED TABLES

Table - 1**District wise No. of Care Homes in Kerala by Type of Institution**

Sl No	District	Type of Institution					
		Govt	Institution run by NGO's			Proprietorship	Total
			under SJD	under OCB	Unrecognized		
1	Kasaragod	11	13	35	9	2	70
2	Kannur	5	17	129	1	2	154
3	Wayanad	4	24	56	10	4	98
4	Kozhikkode	15	27	68	11	1	122
5	Malappuram	7	27	89	9	4	136
6	Palakkad	7	29	107	17	4	164
7	Thrissur	13	60	166	13	8	260
8	Ernakulam	21	89	219	44	10	383
9	Idukki	6	35	74	10	26	151
10	Kottayam	7	47	160	16	8	238
11	Alappuzha	6	16	63	4	4	93
12	Pathanamthitta	4	22	52	9	4	91
13	Kollam	10	29	41	6	15	101
14	Thiruvananthapuram	20	42	108	14	15	199
Total		136	477	1367	173	107	2260

* SJD - Social Justice Department

* OCB -Orphanage Control Board

* NGO -Non Governmental Organisation

Table - 2**District wise No. of Care Homes in Kerala by Year of Starting**

Sl No	District	Year of Starting						Total
		before 1990	1991 - 1995	1996 - 2000	2001 - 2005	2006 - 2010	after 2010	
1	Kasaragod	10	11	9	16	10	14	70
2	Kannur	47	12	27	23	31	14	154
3	Wayanad	25	9	11	29	18	6	98
4	Kozhikkode	46	17	12	20	18	9	122
5	Malappuram	45	22	20	20	21	8	136
6	Palakkad	39	18	18	34	38	17	164
7	Thrissur	90	16	35	47	45	27	260
8	Ernakulam	124	30	54	60	75	40	383
9	Idukki	34	9	22	36	35	15	151
10	Kottayam	94	27	38	37	27	15	238
11	Alappuzha	28	6	11	22	18	8	93
12	Pathanamthitta	26	6	14	13	22	10	91
13	Kollam	31	3	9	18	20	20	101
14	Thiruvananthapuram	55	22	35	30	36	21	199
Total		694	208	315	405	414	224	2260

Table – 3

District wise No. of Care Homes in Kerala by Type of Institution (Excluding Govt. & Proprietorship)

Sl No	District	Type of Institution (Non Govt.)			
		Charitable Society	Trust	Company	Total
1	Kasaragod	32	23	2	57
2	Kannur	104	43	0	147
3	Wayanad	72	18	0	90
4	Kozhikode	62	44	0	106
5	Malappuram	90	35	0	125
6	Palakkad	92	60	1	153
7	Thrissur	144	94	1	239
8	Ernakulam	215	137	0	352
9	Idukki	77	39	3	119
10	Kottayam	153	70	0	223
11	Alappuzha	57	26	0	83
12	Pathanamthitta	57	23	3	83
13	Kollam	39	35	2	76
14	Thiruvananthapuram	118	43	3	164
Total		1312	690	15	2017

Table - 4**District wise No. of Care Homes in Kerala run by Religious Organizations**

SI No	District	Religion				Non Religious
		Hindu	Christian	Muslim	Total	
1	Kasaragod	3	13	25	41	29
2	Kannur	3	83	39	125	29
3	Wayanad	2	61	11	74	24
4	Kozhikkode	3	35	46	84	38
5	Malappuram	2	11	100	113	23
6	Palakkad	6	59	57	122	42
7	Thrissur	15	158	27	200	60
8	Ernakulam	18	224	31	273	110
9	Idukki	4	97	1	102	49
10	Kottayam	3	193	6	202	36
11	Alappuzha	4	56	6	66	27
12	Pathanamthitta	5	58	1	64	27
13	Kollam	5	35	15	55	46
14	Thiruvananthapuram	7	97	19	123	76
Total		80	1180	384	1644	616

Table – 5**District wise No. of Care Homes in Kerala having Registration under FCRA**

Sl No	District	Registration under FCRA		Total
		Registered	Not Registered	
1	Kasaragod	14	56	70
2	Kannur	8	146	154
3	Wayanad	16	82	98
4	Kozhikkode	33	89	122
5	Malappuram	11	125	136
6	Palakkad	31	133	164
7	Thrissur	67	193	260
8	Ernakulam	71	312	383
9	Idukki	16	135	151
10	Kottayam	38	200	238
11	Alappuzha	18	75	93
12	Pathanamthitta	20	71	91
13	Kollam	25	76	101
14	Thiruvananthapuram	41	158	199
Total		409	1851	2260

* FCRA - Foreign Contribution Regulation Act

Table - 6**District wise No. of Care Homes in Kerala Recognised for Grant-in-Aid**

SI No	District	Status of grant-in-Aid		Total
		Recognized	Not Recognized	
1	Kasaragod	24	46	70
2	Kannur	68	86	154
3	Wayanad	46	52	98
4	Kozhikkode	68	54	122
5	Malappuram	81	55	136
6	Palakkad	80	84	164
7	Thrissur	116	144	260
8	Ernakulam	131	252	383
9	Idukki	58	93	151
10	Kottayam	129	109	238
11	Alappuzha	36	57	93
12	Pathanamthitta	22	69	91
13	Kollam	45	56	101
14	Thiruvananthapuram	70	129	199
Total		974	1286	2260

Table - 7**District wise No. of Care Homes in Kerala by Category of Institution**

SI No	District	Category Of Institution					Total
		for Children	for Disabled	for Old Age	for Women	for Others	
1	Kasaragod	41	9	16	3	1	70
2	Kannur	85	22	35	7	5	154
3	Wayanad	60	17	15	6	0	98
4	Kozhikkode	76	13	23	5	5	122
5	Malappuram	112	9	7	5	3	136
6	Palakkad	104	19	32	4	5	164
7	Thrissur	133	36	78	10	3	260
8	Ernakulam	160	73	115	19	16	383
9	Idukki	101	20	18	9	3	151
10	Kottayam	105	45	69	10	9	238
11	Alappuzha	46	16	23	4	4	93
12	Pathanamthitta	42	16	28	5	0	91
13	Kollam	59	15	20	5	2	101
14	Thiruvananthapuram	96	32	42	10	19	199
	Total	1220	342	521	102	75	2260

Table - 8**District wise No. of Care Homes in Kerala by Nature of Admission**

Sl No	District	Nature of Admission			
		Statutory	Voluntary	Recommended by Govt. Agency	Recommended by Others
1	Kasaragod	22	39	12	28
2	Kannur	58	84	46	99
3	Wayanad	21	47	46	66
4	Kozhikkode	27	83	33	44
5	Malappuram	26	79	15	29
6	Palakkad	71	80	39	67
7	Thrissur	43	124	55	155
8	Ernakulam	71	226	92	244
9	Idukki	28	80	29	68
10	Kottayam	47	125	63	175
11	Alappuzha	18	42	18	55
12	Pathanamthitta	15	36	20	64
13	Kollam	34	38	29	57
14	Thiruvananthapuram	50	100	60	117
Total		531	1183	557	1268

Table - 9**District wise No. of Care Homes by Ownership of Building**

Sl No	District	Ownership of Building				
		Owned	Govt.	Rented/Leased	Rent free	Total
1	Kasaragod	54	10	5	1	70
2	Kannur	143	5	5	1	154
3	Wayanad	87	3	4	4	98
4	Kozhikkode	99	16	4	3	122
5	Malappuram	124	5	5	2	136
6	Palakkad	142	8	10	4	164
7	Thrissur	234	7	9	10	260
8	Ernakulam	324	19	23	17	383
9	Idukki	122	2	22	5	151
10	Kottayam	218	5	10	5	238
11	Alappuzha	87	3	3	0	93
12	Pathanamthitta	86	2	3	0	91
13	Kollam	77	8	10	6	101
14	Thiruvananthapuram	162	12	18	7	199
Total		1959	105	131	65	2260

Table – 10**District wise No. of Carehomes in Kerala by Type of Building**

Sl No	District	Type of Building			
		Pucca	Semi-pucca	Katcha	Total
1	Kasaragod	63	7	0	70
2	Kannur	145	8	1	154
3	Wayanad	95	3	0	98
4	Kozhikkode	105	16	1	122
5	Malappuram	128	8	0	136
6	Palakkad	159	5	0	164
7	Thrissur	249	11	0	260
8	Ernakulam	363	19	1	383
9	Idukki	147	4	0	151
10	Kottayam	222	14	2	238
11	Alappuzha	84	9	0	93
12	Pathanamthitta	80	11	0	91
13	Kollam	87	13	1	101
14	Thiruvananthapuram	179	20	0	199
Total		2106	148	6	2260

Table - 11**District wise No. of Care Homes in Kerala by Building Area (in sq. ft)**

Sl No	District	Building area (in sq. ft)				
		Less than 2000	2001 - 3250	3251 - 6000	More than 6000	Total
1	Kasaragod	23	15	16	16	70
2	Kannur	32	34	53	35	154
3	Wayanad	34	16	31	17	98
4	Kozhikkode	30	22	39	31	122
5	Malappuram	24	34	43	35	136
6	Palakkad	44	41	49	30	164
7	Thrissur	66	58	62	74	260
8	Ernakulam	115	80	97	91	383
9	Idukki	64	28	35	24	151
10	Kottayam	48	51	78	61	238
11	Alappuzha	29	30	19	15	93
12	Pathanamthitta	23	20	23	25	91
13	Kollam	39	25	19	18	101
14	Thiruvananthapuram	65	41	56	37	199
Total		636	495	620	509	2260

Table - 12**District wise No. of Care Homes by Compound Area (in cents)**

SI No	District	Compound area (in cents)				
		Less than 30	31 - 70	71 - 200	More than 200	Total
1	Kasaragod	16	19	19	16	70
2	Kannur	41	32	50	31	154
3	Wayanad	19	20	29	30	98
4	Kozhikkode	32	35	32	23	122
5	Malappuram	21	22	57	35	136
6	Palakkad	36	29	57	42	164
7	Thrissur	55	73	85	47	260
8	Ernakulam	140	87	98	56	383
9	Idukki	54	26	45	26	151
10	Kottayam	51	53	87	47	238
11	Alappuzha	18	34	31	10	93
12	Pathanamthitta	18	23	25	25	91
13	Kollam	29	25	30	17	101
14	Thiruvananthapuram	75	56	33	35	199
Total		605	534	678	440	2260

Table - 13**District wise No. of Care Homes in Kerala having Fitness Certificate / Sanitation Certificate**

SI No	District	Total No. of Institutions	No. of Institutions having			
			Fitness certificate		Sanitation Certificate	
			Number	Percentage	Number	Percentage
1	Kasaragod	70	55	79	52	74
2	Kannur	154	143	93	146	95
3	Wayanad	98	88	90	86	88
4	Kozhikkode	122	106	87	107	88
5	Malappuram	136	104	76	112	82
6	Palakkad	164	140	85	138	84
7	Thrissur	260	215	83	238	92
8	Ernakulam	383	349	91	362	95
9	Idukki	151	142	94	144	95
10	Kottayam	238	221	93	224	94
11	Alappuzha	93	82	88	87	94
12	Pathanamthitta	91	86	95	84	92
13	Kollam	101	89	88	93	92
14	Thiruvananthapuram	199	180	90	172	86
Total		2260	2000	88	2045	90

Table - 14**District wise No. of Care Homes engaging multiple activities**

Sl No	District	Number of Institutions run by the Management of Care Homes		
		Educational	Health	Others
1	Kasaragod	54	5	22
2	Kannur	83	103	80
3	Wayanad	203	21	49
4	Kozhikkode	150	20	195
5	Malappuram	612	12	36
6	Palakkad	105	22	160
7	Thrissur	290	62	258
8	Ernakulam	216	79	387
9	Idukki	37	8	90
10	Kottayam	93	30	118
11	Alappuzha	168	31	62
12	Pathanamthitta	37	11	124
13	Kollam	124	26	103
14	Thiruvananthapuram	226	61	142
Total		2398	491	1826

Table - 15

District wise No.of Care Homes in Kerala According to lack of working environment and financial soundness

Sl No	District	Major Problems faced by the Institution								Total
		Financial	Legal	From Public	Financial & Legal	Financial & From Public	Legal & From public	All of three	Others	
1	Kasaragod	32	1	2	1	0	0	0	34	70
2	Kannur	66	1	2	6	0	0	0	70	154
3	Wayanad	50	2	1	1	0	1	1	40	98
4	Kozhikkode	49	2	1	0	2	0	2	66	122
5	Malappuram	46	5	1	0	0	0	0	72	136
6	Palakkad	50	2	1	7	1	0	0	103	164
7	Thrissur	126	2	0	5	0	0	0	127	260
8	Ernakulam	178	3	1	5	3	0	0	184	383
9	Idukki	78	1	1	6	0	0	2	48	151
10	Kottayam	78	7	1	7	2	0	1	133	238
11	Alappuzha	50	0	1	2	1	0	1	38	93
12	Pathanamthitta	21	0	0	2	0	0	0	68	91
13	Kollam	31	0	0	1	2	0	1	66	101
14	Thiruvananthapuram	109	5	1	8	0	0	6	70	199
Total		964	31	13	51	11	1	14	1119	2260

Table - 16

District wise No. of Care Homes in Kerala According to Facilities provided to Inmates

Sl No	District	Facilities to inmates															
		Sufficient food (3times/day)	Mess	Separate Dining hall for Women	Essential items (Soap, Oil, Tooth Paste, Tooth Brush etc)	Separate Toilet for Women	Telephone	Library and Reading room	News paper	Other Publications	Radio/Television	Sports and Games	Health Club	Medical Aid	Doctors Service	Uniform	Vocational Training
1	Kasaragod	65	63	40	64	42	62	50	68	46	47	50	10	62	53	40	32
2	Kannur	154	154	97	154	103	141	125	151	128	132	109	28	141	141	61	50
3	Wayanad	94	84	56	91	69	90	75	91	79	81	74	17	92	77	50	40
4	Kozhikkode	119	116	74	118	86	111	94	113	90	101	89	41	118	110	51	55
5	Malappuram	136	129	87	133	94	124	114	133	104	75	113	45	125	100	93	62
6	Palakkad	162	159	85	156	112	148	122	153	115	109	108	40	137	138	90	56
7	Thrissur	257	254	190	256	205	227	203	245	186	236	186	46	245	226	115	92
8	Ernakulam	375	366	234	365	290	334	275	361	291	354	248	79	352	320	124	126
9	Idukki	128	122	88	123	93	133	92	125	91	123	88	28	130	106	59	51
10	Kottayam	237	236	158	234	190	236	191	234	197	229	156	51	228	211	106	86
11	Alappuzha	93	92	64	93	69	90	62	90	81	89	60	22	84	77	44	25
12	Pathanamthitta	89	88	65	86	69	84	66	86	79	85	62	19	87	81	29	23
13	Kollam	96	91	70	93	75	93	74	98	82	86	72	31	92	82	48	31
14	Thiruvananthapuram	196	190	130	183	163	182	148	191	139	179	121	40	183	162	67	72
	Total	2201	2144	1438	2149	1660	2055	1691	2139	1708	1926	1536	497	2076	1884	977	801

Table - 17**District wise No. of Care Homes in Kerala According to availability of ICT Facility**

Sl No	District	With Internet	Without Internet	No Computer	Total
1	Kasaragod	20	31	19	70
2	Kannur	37	52	65	154
3	Wayanad	36	31	31	98
4	Kozhikkode	40	53	29	122
5	Malappuram	57	52	27	136
6	Palakkad	44	85	35	164
7	Thrissur	66	114	80	260
8	Ernakulam	102	137	144	383
9	Idukki	24	74	53	151
10	Kottayam	78	89	71	238
11	Alappuzha	29	38	26	93
12	Pathanamthitta	25	28	38	91
13	Kollam	33	32	36	101
14	Thiruvananthapuram	62	77	60	199
Total		653	893	714	2260

Table - 18**District wise No. of Care Homes in Kerala having vehicle Facility**

Sl No	District	Transportation Facility			
		Owned	Rented	Not available	Total
1	Kasaragod	29	22	19	70
2	Kannur	68	41	45	154
3	Wayanad	40	32	26	98
4	Kozhikkode	55	23	44	122
5	Malappuram	66	22	48	136
6	Palakkad	65	63	36	164
7	Thrissur	126	65	69	260
8	Ernakulam	162	121	100	383
9	Idukki	43	35	73	151
10	Kottayam	82	107	49	238
11	Alappuzha	42	28	23	93
12	Pathanamthitta	39	34	18	91
13	Kollam	48	17	36	101
14	Thiruvananthapuram	100	52	47	199
Total		965	662	633	2260

Table - 19**District wise details of Inmates according to Nature of admission**

SI No	District	Number of inmates in Orphanages					
		Orphan	Having Mother Only	Having Father Only	Abandoned	Surrendered	Total
1	Kasaragod	116	1067	1094	51	188	2516
2	Kannur	120	452	247	34	502	1355
3	Wayanad	115	480	493	111	197	1396
4	Kozhikkode	273	1607	285	958	1058	4181
5	Malappuram	365	1659	1111	407	1558	5100
6	Palakkad	186	648	209	36	1642	2721
7	Thrissur	329	616	296	45	1789	3075
8	Ernakulam	432	818	382	511	956	3099
9	Idukki	44	215	83	5	165	512
10	Kottayam	162	363	101	74	690	1390
11	Alappuzha	68	318	154	3	331	874
12	Pathanamthitta	51	203	91	41	79	465
13	Kollam	232	350	266	24	533	1405
14	Thiruvananthapuram	173	439	134	74	757	1577
Total		2666	9235	4946	2374	10445	29666

Table - 20**District wise Number of Inmates in Orphanages having Certificates**

SI No	District	Number of inmates Having					
		Orphan Certificate	Non Orphan Certificate	Abandoned Certificate	Surrender Deal Certificate	No Certificate	Total
1	Kasaragod	1858	212	0	0	446	2516
2	Kannur	397	359	8	72	519	1355
3	Wayanad	288	222	0	114	772	1396
4	Kozhikkode	831	905	907	267	1271	4181
5	Malappuram	1923	2230	6	105	836	5100
6	Palakkad	629	1061	22	594	415	2721
7	Thrissur	319	1169	14	464	1109	3075
8	Ernakulam	491	900	90	185	1433	3099
9	Idukki	67	312	12	4	117	512
10	Kottayam	197	356	77	404	356	1390
11	Alappuzha	92	195	1	262	324	874
12	Pathanamthitta	108	244	16	24	73	465
13	Kollam	156	296	0	324	629	1405
14	Thiruvananthapuram	218	509	53	359	438	1577
Total		7574	8970	1206	3178	8738	29666

Table - 21**District wise Number of Inmates in Care Homes According to Marital Status**

Sl No	District	Marital Status						Total
		Never Married	Married	Divorced	Separated	Widow	Widower	
1	Kasaragod	3273	67	2	36	64	26	3468
2	Kannur	4335	495	56	78	229	83	5276
3	Wayanad	3268	101	4	29	78	59	3539
4	Kozhikkode	5889	305	65	112	143	50	6564
5	Malappuram	7054	113	26	209	68	16	7486
6	Palakkad	6210	230	30	49	316	113	6948
7	Thrissur	7827	1155	142	179	513	139	9955
8	Ernakulam	10732	1060	138	342	1022	283	13577
9	Idukki	4004	231	88	307	288	100	5018
10	Kottayam	6590	767	140	229	600	266	8592
11	Alappuzha	2417	303	36	90	179	38	3063
12	Pathanamthitta	2450	120	23	123	225	79	3020
13	Kollam	2984	597	147	160	413	166	4467
14	Thiruvananthapuram	5587	979	70	217	265	101	7219
Total		72620	6523	967	2160	4403	1519	88192

Table - 22**District wise Number of inmates in Care Homes According to type of admission**

SI No	District	Type of admission				Total
		Free of cost	With full fees	With nominal fees	With Sponsorship	
1	Kasaragod	3351	13	74	30	3468
2	Kannur	5181	53	28	14	5276
3	Wayanad	3209	129	201	0	3539
4	Kozhikkode	6437	9	11	107	6564
5	Malappuram	7352	16	92	26	7486
6	Palakkad	6649	100	172	27	6948
7	Thrissur	9319	140	486	10	9955
8	Ernakulam	12118	403	999	57	13577
9	Idukki	4474	417	99	28	5018
10	Kottayam	8172	149	214	57	8592
11	Alappuzha	2917	8	124	14	3063
12	Pathanamthitta	2859	40	58	63	3020
13	Kollam	4169	200	28	70	4467
14	Thiruvananthapuram	6708	82	277	152	7219
Total		82915	1759	2863	655	88192

Table - 23**District wise number of Inmates from Other States in Care Homes**

SI No	District	No. of Inmates from									Total
		Tamilnadu	Karnataka	Andhra Pradesh	West Bangal	Odisha	Assam	Uttar Pradesh	Bihar	Others	
1	Kasaragod	33	463	21	3	3	3	12	5	160	703
2	Kannur	176	213	35	21	17	7	42	38	219	768
3	Wayanad	31	8	2	1	0	1	2	67	55	167
4	Kozhikkode	79	39	8	50	5	3	26	126	1076	1412
5	Malappuram	114	44	19	125	5	6	34	17	49	413
6	Palakkad	213	22	8	70	3	3	1	11	28	359
7	Thrissur	140	54	19	48	7	1	30	39	161	499
8	Ernakulam	408	189	97	15	112	17	62	59	298	1257
9	Idukki	79	9	5	2	8	0	1	3	13	120
10	Kottayam	147	34	42	21	29	4	31	11	208	527
11	Alappuzha	44	22	16	17	22	1	8	10	91	231
12	Pathanamthitta	35	4	3	4	22	2	5	37	35	147
13	Kollam	83	20	14	6	18	0	3	10	1105	1259
14	Thiruvananthapuram	159	18	21	20	23	48	30	35	156	510
Total		1741	1139	310	403	274	96	287	468	3654	8372

Table - 24

District wise Number of Inmates in Care Homes by Reason for Admission

Sl.No	District	Number of inmates													Total
		Orphan	Poverty	No one to look after	No facility at home	Relatives abroad	Presently relatives away from home	Torture from other family members	Mentally Challenged	Mental Illness	Autism	Alzheimers	Other Illness	Others	
1	Kasaragod	892	1866	399	94	0	2	3	36	99	0	0	1	76	3468
2	Kannur	456	1699	1283	537	7	7	120	443	370	40	10	70	234	5276
3	Wayanad	191	1450	418	650	3	32	64	316	94	0	2	54	265	3539
4	Kozhikkode	669	2706	1522	849	2	8	78	194	272	1	10	96	157	6564
5	Malappuram	1297	4015	418	841	10	0	41	249	295	10	6	0	304	7486
6	Palakkad	736	2746	534	1306	9	20	13	516	332	7	8	105	616	6948
7	Thrissur	644	2660	2067	2142	44	101	175	897	732	6	29	237	221	9955
8	Ernakulam	930	2059	3348	2318	112	136	478	1120	1120	16	35	380	1525	13577
9	Idukki	156	1064	1009	1122	2	0	27	763	196	3	0	107	569	5018
10	Kottayam	468	1956	1935	987	19	27	274	1119	1019	35	7	394	352	8592
11	Alappuzha	124	1123	951	352	16	34	24	144	234	5	4	8	44	3063
12	Pathanamthitta	147	420	711	534	41	4	81	592	370	15	1	46	58	3020
13	Kollam	459	1068	740	541	11	34	42	767	224	8	8	187	378	4467
14	Thiruvananthapuram	411	2061	984	1077	30	33	154	433	557	29	119	977	354	7219
Total		7580	26893	16319	13350	306	438	1574	7589	5914	175	239	2662	5153	88192

Table - 25

Category wise Number of Inmates in Care Homes by Reason for Admission

Sl.No	General Category of Institution	Number of inmates											Total	
		Orphan	Poverty	No facility at home	Relatives abroad	Presently relatives away from home	Family Base Abuse	Mentally Challenged	Mental Illness	Autism	Alzheimers	Other Illness		Others
1	Children	10944	24888	11253	51	156	883	101	11	4	13	74	2597	50975
2	Disabled	2273	757	656	1	11	11	6300	4174	150	113	720	820	15986
3	Old Age	8407	923	1044	244	208	346	300	586	6	92	537	1242	13935
4	Women	1239	174	290	3	60	307	380	624	2		14	242	3335
5	Others	1036	151	107	7	3	27	508	519	13	21	1317	252	3961
Total		23899	26893	13350	306	438	1574	7589	5914	175	239	2662	5153	88192

Table - 26

District Wise Number of Inmates in Care Homes According to Religion and Social Group

Sl No	District	Religion											Social Group										
		Hindu		Muslim		Christian		Others		Not Known		Total	SC		ST		OBC		Others		Not Known		Total
		Male	Female	Male	Female	Male	Female	Male	Female	Male	Female		Male	Female	Male	Female	Male	Female	Male	Female	Male	Female	
1	Kasaragod	223	164	2015	575	107	180	3	2	199	0	3468	6	14	9	34	2076	515	186	343	261	24	3468
2	Kannur	863	906	1215	637	446	1011	2	14	98	84	5276	39	64	28	48	1750	1327	387	916	420	297	5276
3	Wayanad	478	726	729	686	335	572	0	8	1	4	3539	95	81	91	242	817	859	525	797	15	17	3539
4	Kozhikkode	507	840	2713	1620	227	439	5	0	80	133	6564	100	190	5	51	2981	2074	301	437	145	280	6564
5	Malappuram	375	388	4261	2069	88	190	0	0	55	60	7486	31	51	40	48	4373	2187	77	172	258	249	7486
6	Palakkad	1164	1732	2002	1225	241	297	0	0	127	160	6948	171	139	313	632	2342	1806	446	497	255	347	6948
7	Thrissur	1408	2564	1065	759	1280	2350	41	85	136	267	9955	155	426	73	351	1616	1686	1749	2972	337	590	9955
8	Ernakulam	1593	2968	1039	769	1548	4059	92	51	734	724	13577	245	524	179	373	1921	2820	1713	3737	948	1117	13577
9	Idukki	1052	1302	68	55	979	1321	13	45	133	50	5018	375	364	164	245	239	409	1155	1595	312	160	5018
10	Kottayam	1202	1784	155	158	1720	3154	17	38	284	80	8592	162	334	62	111	423	885	2038	3636	672	269	8592
11	Alappuzha	555	660	376	46	349	884	0	0	135	58	3063	94	120	73	12	694	521	419	863	135	132	3063
12	Pathanamthitta	485	741	119	19	615	862	10	7	146	16	3020	82	192	19	5	255	269	773	1104	246	75	3020
13	Kollam	619	811	798	437	450	892	42	41	212	165	4467	136	229	14	20	1175	1281	501	526	295	290	4467
14	Thiruvananthapuram	986	1253	850	409	1114	1818	51	60	338	340	7219	182	202	78	82	1728	1908	752	916	606	765	7219
	Total	11510	16839	17405	9464	9499	18029	276	351	2678	2141	88192	1873	2930	1148	2254	22390	18547	11022	18511	4905	4612	88192

Table - 27

Age Group wise Number of Inmates in Care Homes According to Religion and Social Group

Sl No	Age Group	Religion											Social Group										
		Hindu		Muslim		Christian		Others		Not Known		Total	SC		ST		OBC		Others		Not Known		Total
		Male	Female	Male	Female	Male	Female	Male	Female	Male	Female		Male	Female	Male	Female	Male	Female	Male	Female	Male	Female	
1	0-6	645	812	331	299	359	480	19	13	225	205	3388	86	125	142	216	512	505	566	682	273	281	3388
4	7-18	5519	9038	15875	7998	4576	8448	78	196	668	504	52900	1420	2169	927	1870	18200	12923	4807	8156	1329	1099	52900
2	19-60	2982	3642	833	766	2626	4603	62	78	1136	799	17527	249	396	50	117	2023	2480	3263	5095	2051	1803	17527
3	61-70	1145	1597	220	230	864	1955	61	21	472	442	7007	56	116	11	32	770	1297	1108	2012	815	790	7007
5	71-80	863	1145	109	125	708	1628	40	30	150	154	4952	50	79	16	12	660	927	832	1605	298	473	4952
6	81-90	317	537	33	41	319	803	14	12	24	31	2131	9	39	2	5	200	377	390	845	103	161	2131
7	90+	39	68	4	5	47	112	2	1	3	6	287	3	6		2	25	38	56	116	12	29	287
Total		11510	16839	17405	9464	9499	18029	276	351	2678	2141	88192	1873	2930	1148	2254	22390	18547	11022	18511	4881	4636	88192

Table - 28

Category of Institution wise Number of Inmates in Care Homes According to Religion and Social Group

Sl. No	General Category of Institution	Religion										Social Group											
		Hindu		Muslim		Christian		Others		Not Known		Total	SC		ST		OBC		Others		Not Known		Total
		Male	Female	Male	Female	Male	Female	Male	Female	Male	Female		Male	Female	Male	Female	Male	Female	Male	Female	Male	Female	
1	Children	5219	8668	15737	7871	4100	7927	78	183	620	572	50975	1374	2093	1034	1982	17794	12555	4293	7491	1223	1136	50975
2	Disabled	3066	2910	770	479	2938	3665	82	38	1373	665	15986	317	361	44	143	1916	1702	3705	4241	2247	1310	15986
3	Old Age	2474	3471	410	363	1975	4566	88	68	265	255	13935	125	253	60	72	1709	2684	2486	4711	827	1008	13935
4	Women	0	1225	0	381	0	1415	0	47	0	267	3335	0	166	0	52	0	849	0	1610	0	658	3335
5	Others	751	565	488	370	486	456	28	15	420	382	3961	57	57	10	5	971	757	538	458	597	511	3961
Total		11510	16839	17405	9464	9499	18029	276	351	2678	2141	88192	1873	2930	1148	2254	22390	18547	11022	18511	4894	4623	88192

Table - 29**District Wise Number of Inmates according to Educational Qualifications**

Sl.No.	District	Educational qualifications												Total
		Illiterates		Primary level		SSLC		Plus Two		Graduation		Post Graduation/ Professional		
		Male	Female	Male	Female	Male	Female	Male	Female	Male	Female	Male	Female	
1	Kasaragod	78	109	1692	580	618	153	130	79	29	0	0	0	3468
2	Kannur	417	543	1453	1468	583	515	157	121	13	4	1	1	5276
3	Wayanad	149	216	892	1138	311	442	184	194	6	6	0	1	3539
4	Kozhikkode	232	233	2251	1630	783	801	250	360	14	6	2	2	6564
5	Malappuram	305	203	2749	1416	1219	675	500	406	5	5	1	2	7486
6	Palakkad	507	369	2085	2367	714	461	194	168	32	40	2	9	6948
7	Thrissur	624	877	2250	3827	681	831	342	418	23	52	10	20	9955
8	Ernakulam	1014	1732	2575	4444	1015	1521	232	550	99	239	71	85	13577
9	Idukki	746	670	1168	1501	241	386	65	188	19	22	6	6	5018
10	Kottayam	491	605	2167	3094	532	1231	114	205	29	50	45	29	8592
11	Alappuzha	213	234	734	953	400	326	51	122	13	10	4	3	3063
12	Pathanamthitta	237	360	730	816	247	348	140	106	17	10	4	5	3020
13	Kollam	468	422	1167	1035	307	556	151	265	27	53	1	15	4467
14	Thiruvananthapuram	425	572	1749	1846	634	791	481	561	43	99	7	11	7219
Total		5906	7145	23662	26115	8285	9037	2991	3743	369	596	154	189	88192

Table - 30**Number of Inmates according to Educational Qualification (by age group)**

Sl.No.	Age group	Educational qualifications												Total
		Illiterates		Primary level		SSLC		Plus Two		Graduation		Post Graduation/ Professional		
		Male	Female	Male	Female	Male	Female	Male	Female	Male	Female	Male	Female	
1	below 18	1433	1363	18158	17332	6386	6463	2317	2834	0	0	2	0	56288
2	19-60	2720	2857	2870	4168	1243	1678	547	747	226	355	42	74	17527
3	61-70	937	1345	1261	2092	349	493	86	109	83	163	38	51	7007
4	71-80	553	1001	966	1655	231	290	36	38	29	61	54	38	4952
5	81-90	224	488	357	782	75	102	5	13	29	16	15	25	2131
6	90+	39	91	50	86	1	11	0	2	2	1	3	1	287
Total		5906	7145	23662	26115	8285	9037	2991	3743	369	596	154	189	88192

Table - 31

Number of Inmates according to Educational Qualifications (by general category of Institution)

Sl.No.	General Category of Institution	Educational qualifications												Total
		Illiterates		Primary level		SSLC		Plus Two		Graduation		Post Graduation/ Professional		
		Male	Female	Male	Female	Male	Female	Male	Female	Male	Female	Male	Female	
1	Children	941	809	16625	15757	5996	5973	2189	2683	0	0	0	0	50973
2	Disabled	3064	2721	3702	3448	1046	1028	271	393	127	148	19	19	15986
3	Old Age	1444	2340	2643	4787	712	1081	134	206	155	183	124	126	13935
4	Women	0	836	0	1487	0	619	0	182	0	175	0	36	3335
5	Others	457	439	692	636	531	336	397	279	87	90	11	8	3963
Total		5906	7145	23662	26115	8285	9037	2991	3743	369	596	154	189	88192

Table - 32**District Wise No. of Inmates in Care Homes by Information about Relatives**

SL.NO.	District	Having Relatives		Not Having Relatives		Not Known		Total
		Male	Female	Male	Female	Male	Female	
1	Kasaragod	2312	763	61	114	139	28	3417
2	Kannur	1757	2018	576	472	290	155	5268
3	Wayanad	1399	1858	97	100	46	31	3531
4	Kozhikkode	3211	2347	206	452	108	145	6469
5	Malappuram	4450	2428	110	80	228	184	7480
6	Palakkad	3215	2966	187	336	121	85	6910
7	Thrissur	3336	5157	323	398	256	433	9903
8	Ernakulam	3440	6383	691	936	665	937	13052
9	Idukki	1865	2445	152	199	227	119	5007
10	Kottayam	2446	4507	404	469	509	208	8543
11	Alappuzha	1070	1287	114	165	225	177	3038
12	Pathanamthitta	1030	1312	164	226	174	91	2997
13	Kollam	1576	1584	223	327	256	352	4318
14	Thiruvananthapuram	2870	3310	292	294	155	244	7165
Total		33977	38365	3600	4568	3399	3189	87098

Table - 33**Age Group Wise No. of Inmates in Care Homes by Information about Relatives**

SL.NO.	Age Group	Having Relatives		Not Having Relatives		Not Known		Total
		Male	Female	Male	Female	Male	Female	
1	0-6	1364	1549	141	140	75	119	3388
2	7-18	25108	24231	1362	1345	252	602	52900
3	19-60	4694	7034	1125	1386	1776	1364	17379
4	61-70	1320	2546	492	857	756	569	6540
5	71-80	1018	2041	398	560	414	386	4817
6	81-90	473	964	82	280	126	149	2074
Total		33977	38365	3600	4568	3399	3189	87098

Table - 34**No. of Inmates in Care Homes by Information about Relatives (by General Category of Institution)**

SL.NO.	General Category of Institution	Having Relatives		Not Having Relatives		Not Known		Total
		Male	Female	Male	Female	Male	Female	
1	Child	24102	23211	1381	1347	271	663	50975
2	Disabled	5549	5721	915	1091	1750	931	15957
3	Old Age	2897	5741	988	1533	944	821	12924
4	Women	0	2466	0	323	13	493	3295
5	Others	1429	1226	316	274	421	281	3947
Total		33977	38365	3600	4568	3399	3189	87098

Table - 35

District wise Number of Inmates gone out from Institution during 2012-13

Sl.No	District	Within Country				Outside Country				Total
		Employment	Marriage	Adoption	Others	Employment	Marriage	Adoption	Others	
1	Kasaragod	3	4	9	226	0	0	0	2	244
2	Kannur	17	22	11	436	1	0	10	2	499
3	Wayanad	22	17	3	303	1	0	0	13	359
4	Kozhikkode	12	37	10	714	9	2	3	8	795
5	Malappuram	40	33	6	1280	24	0	0	11	1394
6	Palakkad	23	64	14	384	0	0	7	1	493
7	Thrissur	47	30	17	982	6	0	0	5	1087
8	Ernakulam	78	40	37	1093	1	0	0	34	1283
9	Idukki	4	3	10	327	1	0	0	15	360
10	Kottayam	89	21	27	932	5	0	4	45	1123
11	Alappuzha	0	6	0	320	0	0	0	2	328
12	Pathanamthitta	9	4	0	238	0	0	0	12	263
13	Kollam	12	9	2	189	0	0	0	1	213
14	Thiruvananthapuram	19	17	51	573	0	0	0	9	669
Total		375	307	197	7997	48	2	24	160	9110

Table - 36

District wise no. of Inmates involved in the activities according to type of Enterprises in Care Homes

Sl.No	District	Manufacturing unit or other types of Enterprises run within the institution	No. of Inmates involved in the activities									Total
			Agriculture	Handloom/ Handicraft	Manufacturing	Tailoring	Catering	Repair Unit	Trade	Art & Performing activities	Others	
1	Kasaragod	9	51	65	21	96	0	0	0	150	0	383
2	Kannur	33	169	75	29	258	9	7	20	38	10	615
3	Wayanad	20	99	6	44	31	11	0	2	53	47	293
4	Kozhikkode	25	491	29	146	548	0	0	0	5	103	1322
5	Malappuram	15	70	7	76	170	0	0	0	8	20	351
6	Palakkad	39	274	122	157	466	2	2	1	216	21	1261
7	Thrissur	45	384	50	99	56	14	6	29	103	157	898
8	Ernakulam	73	352	163	320	275	18	10	25	128	114	1405
9	Idukki	23	133	52	38	50	4	7	4	46	27	361
10	Kottayam	39	296	105	189	110	44	11	5	51	139	950
11	Alappuzha	11	44	1	10	2	2	2	2	1	5	69
12	Pathanamthitta	12	89	31	32	24	0	2	0	116	10	304
13	Kollam	12	218	118	86	88	17	2	0	43	55	627
14	Thiruvananthapuram	49	267	87	142	133	30	7	4	284	51	1005
Total		405	2937	911	1389	2307	151	56	92	1242	759	9844

Table - 37

Category of Institution wise no. of Inmates involved in the activities according to Enterprises in Care Homes

Sl.No	General Category of Institution	Type of Enterprises									Total
		Agriculture	Handloom/ Handicraft	Manufacturing	Tailoring	Catering	Repair Unit	Trade	Art & Performing activities	Others	
1	Children	1428	264	139	1653	17	10	13	673	130	4327
2	Disabled	748	463	943	289	64	35	59	454	319	3374
3	Old Age	393	81	104	113	19	11	20	26	137	904
4	Women	186	86	171	220	37	0	0	89	124	913
5	Others	182	17	32	32	14	0	0	0	49	326
Total		2937	911	1389	2307	151	56	92	1242	759	9844

Table - 38
Category wise Number of Employees in Care Homes

Sl. No	Category	Paid: Part Time		Paid: Full Time		Unpaid: Part Time		Unpaid: Full Time		Total
		Male	Female	Male	Female	Male	Female	Male	Female	
1	Office Staff	159	148	1217	1117	136	89	297	1211	4374
2	Watchman/Peon/ Attenders/Sweepers	127	243	783	782	39	38	63	128	2203
3	Teachers/Craftsman	248	266	685	1004	45	95	39	221	2603
4	Doctor	175	90	53	23	263	170	8	35	817
5	Nurse	11	153	88	460	12	157	3	314	1198
6	Physiotherapist	35	30	15	43	17	22	4	24	190
7	Counsellors	46	75	79	75	118	150	35	117	695
8	Social Workers	43	60	92	141	132	130	75	168	841
9	Driver	180	1	483	11	36	6	30	2	749
10	Cook	81	281	704	1868	10	38	37	187	3206
11	Others	101	142	394	717	106	101	90	296	1947
Total		1206	1489	4593	6241	914	996	681	2703	18823

Table – 38a**Category wise Number of Employees in Care Homes (Abstract)**

Sl. No	Category	Male	Female	Total
1	Office Staff	1809	2565	4374
2	Watchman/Peon/Attenders/Sweepers	1012	1191	2203
3	Teachers/Craftsman	1017	1586	2603
4	Doctor	499	318	817
5	Nurse	114	1084	1198
6	Physiotherapist	71	119	190
7	Counsellors	278	417	695
8	Social Workers	342	499	841
9	Driver	729	20	749
10	Cook	832	2374	3206
11	Others	691	1256	1947
Total		7394	11429	18823

Table - 39
District wise Number of Employees in Care Homes as Office Staff

Sl. No	District	Paid:Part Time		Paid:Full Time		Unpaid:Part Time		Unpaid:Full Time		Total
		Male	Female	Male	Female	Male	Female	Male	Female	
1	Kasaragod	7	4	78	22	2	0	12	14	139
2	Kannur	11	0	87	69	5	4	20	109	305
3	Wayanad	0	3	67	64	2	0	16	47	199
4	Kozhikkode	12	5	113	61	9	8	14	54	276
5	Malappuram	17	0	172	41	7	1	6	16	260
6	Palakkad	15	9	116	64	14	6	22	47	293
7	Thrissur	15	26	128	133	9	3	42	150	506
8	Ernakulam	13	28	100	159	27	20	52	276	675
9	Idukki	6	18	21	65	13	8	20	82	233
10	Kottayam	21	18	53	116	8	13	29	216	474
11	Alappuzha	8	11	55	35	7	6	11	60	193
12	pathanamthitta	5	4	51	62	14	5	15	41	197
13	Kollam	14	6	91	102	8	4	10	34	269
14	Thiruvananthapuram	15	16	85	124	11	11	28	65	355
Total		159	148	1217	1117	136	89	297	1211	4374

Table - 40**District wise Number of Employees in Care Homes as Watchman/Peon/Attenders/Sweepers**

Sl. No	District	Paid: Part Time		Paid: Full Time		Unpaid: Part Time		Unpaid: Full Time		Total
		Male	Female	Male	Female	Male	Female	Male	Female	
1	Kasaragod	2	7	35	16	0	1	2	5	68
2	Kannur	7	9	64	54	2	2	14	9	161
3	Wayanad	0	7	24	41	1	0	7	5	85
4	Kozhikkode	3	24	65	51	0	2	1	6	152
5	Malappuram	10	14	85	60	2	0	1	2	174
6	Palakkad	4	13	74	79	13	0	1	0	184
7	Thrissur	14	29	70	85	0	6	1	18	223
8	Ernakulam	18	48	94	141	3	11	17	29	361
9	Idukki	8	13	25	28	6	9	1	12	102
10	Kottayam	15	23	43	60	4	0	4	22	171
11	Alappuzha	11	8	34	30	6	4	9	5	107
12	Pathanamthitta	4	21	30	25	0	0	3	2	85
13	Kollam	10	10	43	42	0	2	1	10	118
14	Thiruvananthapuram	21	17	97	70	2	1	1	3	212
Total		127	243	783	782	39	38	63	128	2203

Table - 41
District wise Number of Employees in Care Homes as Teachers/Craftsman

Sl. No	District	Paid: Part Time		Paid: Full Time		Unpaid: Part Time		Unpaid: Full Time		Total
		Male	Female	Male	Female	Male	Female	Male	Female	
1	Kasaragod	35	3	43	13	1	0	4	8	107
2	Kannur	11	8	43	48	2	4	8	16	140
3	Wayanad	16	14	28	83	7	3	2	17	170
4	Kozhikkode	43	7	83	58	5	3	0	11	210
5	Malappuram	39	19	150	59	6	1	0	0	274
6	Palakkad	12	14	101	110	3	7	2	5	254
7	Thrissur	12	50	50	131	1	3	0	25	272
8	Ernakulam	27	51	32	129	8	11	14	35	307
9	Idukki	3	13	9	39	0	14	2	28	108
10	Kottayam	16	21	7	77	1	11	4	46	183
11	Alappuzha	4	5	20	27	3	14	0	9	82
12	Pathanamthitta	5	13	11	45	2	4	0	6	86
13	Kollam	8	9	65	78	4	8	0	3	175
14	Thiruvananthapuram	17	39	43	107	2	12	3	12	235
Total		248	266	685	1004	45	95	39	221	2603

Table - 42**District wise Number of Employees in Care Homes as Doctor**

Sl. No	District	Paid: Part Time		Paid: Full Time		Unpaid: Part Time		Unpaid: Full Time		Total
		Male	Female	Male	Female	Male	Female	Male	Female	
1	Kasaragod	3	1	2	0	4	1	0	0	11
2	Kannur	3	7	4	3	14	14	0	2	47
3	Wayanad	6	4	1	0	17	6	0	1	35
4	Kozhikkode	10	2	3	1	15	8	0	3	42
5	Malappuram	1	0	4	0	18	4	1	0	28
6	Palakkad	14	7	4	3	19	5	0	0	52
7	Thrissur	29	15	5	3	23	10	0	8	93
8	Ernakulam	39	18	9	4	53	40	1	10	174
9	Idukki	11	6	0	0	14	17	0	1	49
10	Kottayam	20	14	2	2	27	22	2	4	93
11	Alappuzha	6	2	3	0	19	11	3	1	45
12	Pathanamthitta	2	1	0	4	18	10	1	2	38
13	Kollam	11	3	7	1	9	4	0	1	36
14	Thiruvananthapuram	20	10	9	2	13	18	0	2	74
Total		175	90	53	23	263	170	8	35	817

Table - 43
District wise Number of Employees in Care Homes as Nurse

Sl. No	District	Paid: Part Time		Paid: Full Time		Unpaid: Part Time		Unpaid: Full Time		Total
		Male	Female	Male	Female	Male	Female	Male	Female	
1	Kasaragod	1	0	0	4	0	4	0	3	12
2	Kannur	0	2	14	41	3	7	0	24	91
3	Wayanad	2	2	1	10	0	9	1	15	40
4	Kozhikkode	0	5	2	12	0	4	0	10	33
5	Malappuram	0	1	6	8	3	7	0	8	33
6	Palakkad	0	5	5	26	1	7	0	4	48
7	Thrissur	0	15	8	42	1	10	0	36	112
8	Ernakulam	0	33	21	78	0	53	2	59	246
9	Idukki	5	27	0	18	0	10	0	30	90
10	Kottayam	3	28	13	63	0	9	0	72	188
11	Alappuzha	0	6	0	39	2	11	0	13	71
12	Pathanamthitta	0	4	2	26	2	5	0	18	57
13	Kollam	0	15	11	52	0	2	0	9	89
14	Thiruvananthapuram	0	10	5	41	0	19	0	13	88
Total		11	153	88	460	12	157	3	314	1198

Table - 44
District wise Number of Employees in Care Homes as Physiotherapist

Sl. No	District	Paid: Part Time		Paid: Full Time		Unpaid: Part Time		Unpaid: Full Time		Total
		Male	Female	Male	Female	Male	Female	Male	Female	
1	Kasaragod	0	0	0	2	2	0	0	1	5
2	Kannur	0	1	1	10	1	2	0	2	17
3	Wayanad	0	3	0	1	1	0	0	2	7
4	Kozhikkode	3	0	3	3	0	1	0	0	10
5	Malappuram	0	0	0	2	2	0	0	0	4
6	Palakkad	6	5	1	1	0	0	0	0	13
7	Thrissur	3	7	2	4	2	1	0	3	22
8	Ernakulam	4	3	1	7	0	9	2	6	32
9	Idukki	1	1	1	1	1	1	0	2	8
10	Kottayam	5	3	0	5	2	1	0	3	19
11	Alappuzha	1	1	0	0	2	1	1	0	6
12	Pathanamthitta	2	2	0	3	3	2	0	2	14
13	Kollam	4	3	3	2	0	0	1	2	15
14	Thiruvananthapuram	6	1	3	2	1	4	0	1	18
Total		35	30	15	43	17	22	4	24	190

Table - 45
District wise Number of Employees in Care Homes as Counsellors

Sl. No	District	Paid: Part Time		Paid: Full Time		Unpaid: Part Time		Unpaid: Full Time		Total
		Male	Female	Male	Female	Male	Female	Male	Female	
1	Kasaragod	2	1	1	3	2	1	2	2	14
2	Kannur	2	2	1	2	6	10	2	14	39
3	Wayanad	1	2	2	8	4	6	5	11	39
4	Kozhikkode	2	1	13	6	6	7	1	11	47
5	Malappuram	0	2	2	2	6	1	2	2	17
6	Palakkad	2	3	2	3	9	4	2	0	25
7	Thrissur	3	10	12	7	8	17	5	13	75
8	Ernakulam	12	20	11	4	14	32	0	20	113
9	Idukki	1	6	7	5	10	15	1	6	51
10	Kottayam	7	11	7	8	12	16	3	24	88
11	Alappuzha	2	1	2	3	8	10	1	5	32
12	pathanamthitta	2	3	8	4	17	14	5	6	59
13	Kollam	7	7	7	10	1	5	0	1	38
14	Thiruvananthapuram	3	6	4	10	15	12	6	2	58
Total		46	75	79	75	118	150	35	117	695

Table - 46
District wise Number of Employees in Care Homes as Social Workers

Sl. No	District	Paid: Part Time		Paid: Full Time		Unpaid: Part Time		Unpaid: Full Time		Total
		Male	Female	Male	Female	Male	Female	Male	Female	
1	Kasaragod	0	0	1	1	0	0	4	8	14
2	Kannur	1	1	4	3	1	11	17	12	50
3	Wayanad	0	3	1	7	1	3	5	9	29
4	Kozhikkode	1	0	8	12	8	3	3	6	41
5	Malappuram	0	3	3	3	5	1	2	1	18
6	Palakkad	2	1	11	4	13	7	5	2	45
7	Thrissur	15	5	10	21	18	22	9	39	139
8	Ernakulam	4	16	10	26	15	23	7	42	143
9	Idukki	8	8	8	12	10	5	2	11	64
10	Kottayam	5	12	13	16	3	7	2	20	78
11	Alappuzha	0	0	2	3	5	8	1	13	32
12	Pathanamthitta	0	2	6	10	14	8	4	0	44
13	Kollam	7	5	8	9	0	3	0	2	34
14	Thiruvananthapuram	0	4	7	14	39	29	14	3	110
Total		43	60	92	141	132	130	75	168	841

Table - 47
District wise Number of Employees in Care Homes as Driver

Sl. No	District	Paid: Part Time		Paid: Full Time		Unpaid: Part Time		Unpaid: Full Time		Total
		Male	Female	Male	Female	Male	Female	Male	Female	
1	Kasaragod	2	0	16	1	0	0	3	0	22
2	Kannur	4	0	35	0	2	0	3	0	44
3	Wayanad	7	0	22	0	1	0	5	0	35
4	Kozhikkode	9	0	41	0	1	1	1	0	53
5	Malappuram	8	0	38	0	1	0	2	0	49
6	Palakkad	11	0	40	0	2	0	1	0	54
7	Thrissur	28	0	45	2	2	1	0	0	78
8	Ernakulam	29	0	72	0	9	1	4	0	115
9	Idukki	12	0	15	0	1	0	0	0	28
10	Kottayam	15	1	34	2	6	2	2	2	64
11	Alappuzha	5	0	19	0	2	0	4	0	30
12	Pathanamthitta	8	0	21	0	1	0	2	0	32
13	Kollam	13	0	39	1	1	0	1	0	55
14	Thiruvananthapuram	29	0	46	5	7	1	2	0	90
Total		180	1	483	11	36	6	30	2	749

Table - 48
District wise Number of Employees in Care Homes as Cook

Sl. No	District	Paid: Part Time		Paid: Full Time		Unpaid: Part Time		Unpaid: Full Time		Total
		Male	Female	Male	Female	Male	Female	Male	Female	
1	Kasaragod	5	7	75	42	0	0	5	6	140
2	Kannur	4	7	56	102	0	2	5	21	197
3	Wayanad	1	12	19	90	0	0	4	7	133
4	Kozhikkode	7	16	80	100	0	0	1	4	208
5	Malappuram	8	11	118	101	0	0	0	0	238
6	Palakkad	4	8	78	151	0	3	3	7	254
7	Thrissur	13	25	55	190	1	2	2	27	315
8	Ernakulam	10	40	54	360	1	8	8	42	523
9	Idukki	7	24	19	85	1	5	1	6	148
10	Kottayam	4	39	23	231	3	3	2	25	330
11	Alappuzha	4	14	20	81	0	3	5	10	137
12	Pathanamthitta	1	22	11	77	3	5	1	18	138
13	Kollam	4	23	39	87	0	0	0	8	161
14	Thiruvananthapuram	9	33	57	171	1	7	0	6	284
Total		81	281	704	1868	10	38	37	187	3206

Table - 49
District wise Number of Employees in Care Homes as Others

Sl.No	District	Paid: Part Time		Paid: Full Time		Unpaid: Part Time		Unpaid: Full Time		Total
		Male	Female	Male	Female	Male	Female	Male	Female	
1	Kasaragod	3	6	26	17	0	0	0	0	52
2	Kannur	4	5	14	22	0	0	6	27	78
3	Wayanad	0	0	8	30	1	1	2	11	53
4	Kozhikkode	7	2	63	75	6	6	0	8	167
5	Malappuram	3	5	25	19	9	2	0	1	64
6	Palakkad	3	4	20	29	10	13	9	8	96
7	Thrissur	13	29	29	101	10	4	9	36	231
8	Ernakulam	19	26	59	126	14	19	34	59	356
9	Idukki	9	11	17	22	6	19	13	14	111
10	Kottayam	13	16	27	79	23	21	5	39	223
11	Alappuzha	6	7	11	23	11	10	0	13	81
12	Pathanamthitta	1	1	13	31	3	1	0	19	69
13	Kollam	6	10	36	42	5	1	3	5	108
14	Thiruvananthapuram	14	20	46	101	8	4	9	56	258
Total		101	142	394	717	106	101	90	296	1947

Table - 50**District wise Details of Receipt as fees from Inmates and Own Enterprises during 2012-13 (Amt in Rs.)**

Sl.No.	District	Fees Received from inmates	Receipts from Own Enterprises	Total
1	Kasaragod	447777	1785500	2233277
2	Kannur	2981250	4834354	7815604
3	Wayanad	1442440	9923859	11366299
4	Kozhikkode	1021750	2935425	3957175
5	Malappuram	1577800	9167020	10744820
6	Palakkad	11530907	7539722	19070629
7	Thrissur	11912870	2382065	14294935
8	Ernakulam	14816169	17176195	31992364
9	Idukki	5511995	8522653	14034648
10	Kottayam	6430594	9171775	15602369
11	Alappuzha	12473401	5442	12478843
12	Pathanamthitta	3482675	3955587	7438262
13	Kollam	2259035	624069	2883104
14	Thiruvananthapuram	6868039	39264412	46132451
Total		82756702	117288078	200044780

Table - 51**District wise Details of Grant received (2012-13) by Care Homes (Amt in Rs.)**

Sl.No.	District	Government				Foreign Assistance	Total
		State	Central	LSG	Total		
1	Kasaragod	3113368	800000	0	3913368	860000	4773368
2	Kannur	9753188	62000	55000	9870188	0	9870188
3	Wayanad	7237792	10746530	95216	18079538	1400232	19479770
4	Kozhikkode	26207157	4358113	1407132	31972402	1762985	33735387
5	Malappuram	15752419	464000	260795	16477214	675000	17152214
6	Palakkad	10256608	2723840	63275	13043723	100000	13143723
7	Thrissur	17404152	1826115	58772	19289039	5751281	25040320
8	Ernakulam	21929384	2642073	1197160	25768617	3870578	29639195
9	Idukki	8152695	752400	389115	9294210	0	9294210
10	Kottayam	29545315	3237623	23750	32806688	23759757	56566445
11	Alappuzha	5340111	0	13056	5353167	2626966	7980133
12	Pathanamthitta	5152167	976388	35640	6164195	553144	6717339
13	Kollam	6543169	203899	6656738	13403806	1768990	15172796
14	Thiruvananthapuram	47399824	4800310	1931971	54132105	5180498	59312603
Total		213787349	33593291	12187620	259568260	48309431	307877691

Table - 52
District wise Details of Donation received (2012-13) by Care Homes
(Amt in Rs.)

Sl.No.	District	Foreign Assistance	Individuals/Others	Total
1	Kasaragod	1821022	77599325	77599325
2	Kannur	504432	101248678	101753110
3	Wayanad	2284860	90623477	92908337
4	Kozhikkode	10054281	134236754	144291035
5	Malappuram	286056	112159519	112445575
6	Palakkad	4980706	112674215	117654921
7	Thrissur	24059764	163514901	187574665
8	Ernakulam	34276416	200567742	234844158
9	Idukki	8135485	30952129	39087614
10	Kottayam	18517171	106420120	124937291
11	Alappuzha	7882346	27086610	34968956
12	Pathanamthitta	4806017	71639276	76445293
13	Kollam	5122495	44887066	50009561
14	Thiruvananthapuram	11513060	75044265	86557325
Total		132423089	1348654077	1481077166

Table - 53
District wise Subsidy received (2012-13) by Care Homes (Amt in Rs.)

Sl.No.	District	Government			Total
		State	Central	LSG	
1	Kasaragod	22413	0	0	22413
2	Kannur	8400	32000	0	40400
3	Wayanad	76320	100000	1500	177820
4	Kozhikkode	1195455	0	175	1195630
5	Malappuram	665487	0	0	665487
6	Palakkad	2302010	47650	13652	2363312
7	Thrissur	4945521	6259480	104980	11309981
8	Ernakulam	6336354	1278080	272753	7887187
9	Idukki	1960030	143564	0	2103594
10	Kottayam	4122795	5000	0	4127795
11	Alappuzha	140608	0	10000	150608
12	Pathanamthitta	5966061	0	17800	5983861
13	Kollam	1922559	7500	202000	2132059
14	Thiruvananthapuram	2219485	53760	33398	2306643
Total		31883498	7927034	656258	40466790

Table - 54**District wise Details of amount Received as assistance (2012-13) by Care Homes (Amt in Rs.)**

Sl.No.	District	Government				Individuals/ Others	Total
		State	Central	LSG	Total		
1	Kasaragod	0	0	0	0	1215215	1215215
2	Kannur	0	0	0	0	2178159	2178159
3	Wayanad	0	0	0	0	633000	633000
4	Kozhikkode	0	0	0	0	6976647	6976647
5	Malappuram	0	0	0	0	115038	115038
6	Palakkad	671120	0	0	671120	2818700	3489820
7	Thrissur	0	0	0	0	48219969	48219969
8	Ernakulam	2472850	0	0	2472850	24366642	26839492
9	Idukki	8640	0	0	8640	1040764	1049404
10	Kottayam	165000	0	300	165300	16740326	16905626
11	Alappuzha	340000	0	0	340000	1739963	2079963
12	Pathanamthitta	0	0	0	0	3667986	3667986
13	Kollam	0	0	0	0	336000	336000
14	Thiruvananthapuram	0	0	0	0	4319219	4319219
Total		3657610	0	300	3657910	114367628	118025538

Table - 55**District wise Details of Other Receipts (2012-13) in Care Homes (Amt in Rs.)**

Sl. No.	District	Government			Total	Foreign	Individuals/ Others	Total
		State	Central	LSG				
1	Kasaragod	606602	0	0	606602	0	6222207	6828809
2	Kannur	1086350	0	0	1086350	10000	30563542	31659892
3	Wayanad	3290276	0	0	3290276	0	15397952	18688228
4	Kozhikkode	6112730	0	1418	6114148	0	37605740	43719888
5	Malappuram	61000	1220794	0	1281794	0	10857716	12139510
6	Palakkad	866679	0	0	866679	0	33214181	34080860
7	Thrissur	2585389	0	2901800	5487189	0	24504962	29992151
8	Ernakulam	301500	0	15850	317350	1850744	124103507	126271601
9	Idukki	168186	0	0	168186	0	8642799	8810985
10	Kottayam	1162935	0	500	1163435	714599	59430164	61308198
11	Alappuzha	0	0	0	0	2303881	19125474	21429355
12	Pathanamthitta	12256	0	35000	47256	25000	30272894	30345150
13	Kollam	2276000	0	350000	2626000	0	28773976	31399976
14	Thiruvananthapuram	1635313	0	168927	1804240	1522156	23285342	26611738
Total		20165216	1220794	3473495	24859505	6426380	452000456	483286341

Table - 56**District Wise No. of Care Homes received different types of Govt. Aid (2012-13)**

Sl No	District	Types of Government Aid									
		Ration Permit for			Uninterrupted ration Supply	Subsidy		Water Connection with Concession	exemption		
		Rice	Wheat	Sugar		Gas	Electricity		Vehicle Tax	Building Tax exemption	Land Tax
1	Kasaragod	31	26	8	9	22	34	5	1	28	10
2	Kannur	86	66	30	34	64	77	16	15	88	24
3	Wayanad	57	46	6	12	22	47	7	7	50	12
4	Kozhikkode	58	58	49	36	36	49	11	9	62	23
5	Malappuram	51	50	21	27	28	56	14	9	62	20
6	Palakkad	69	59	29	41	37	75	15	12	84	39
7	Thrissur	132	112	37	54	74	116	29	17	135	52
8	Ernakulam	186	161	117	86	171	187	59	35	208	97
9	Idukki	77	73	68	53	39	53	15	16	61	17
10	Kottayam	174	148	113	67	116	144	31	23	133	39
11	Alappuzha	50	36	6	27	28	47	7	7	44	20
12	Pathanamthitta	49	42	25	31	15	41	14	6	38	8
13	Kollam	45	34	19	16	24	39	10	12	40	12
14	Thiruvananthapuram	106	89	58	60	53	76	30	20	78	36
Total		1171	1000	586	553	729	1041	263	189	1111	409

Table - 57
District Wise Details of Expenditure during financial year 2012-13

SL.No	District	Salary and Wages	Rent	Food Items	Telephone & Internet	Electricity Charge	Water Charges	Dress Items	Medical Expenses	Expense for enterprises	Entertainment Charges	Registration/ License fees	Transportation Charge	School/ Tuition Fees	Others	Total
1	Kasaragod	26954564	320400	36236346	649590	1684952	335436	5499156	1738807	48623	546907	56100	1335062	1399124	33633612	110438679
2	Kannur	44083412	1944621	49362502	1137307	3481180	149762	3603824	4425498	3821499	525688	114722	2757865	2290924	22884048	140582852
3	Wayanad	30834713	109250	46213833	840313	1642097	153283	4243472	2583168	30018946	977480	110385	3894546	3268835	55110445	180000766
4	Kozhikode	83698646	262149	67786594	1196368	3710105	233818	6815373	5190537	1234843	1933444	239138	3317023	4302626	65244272	245164936
5	Malappuram	51082146	835818	76799377	722231	2282137	188664	5757085	4235396	1010880	762146	39643	1890125	2683190	16271597	164560435
6	Palakkad	55261540	1666825	72974131	1203031	4025588	297203	4605521	7522743	9044921	963419	209949	5471588	2032642	26362946	191642047
7	Thrissur	73350450	1818999	99601679	2078748	5037738	432620	8662340	14968333	3988799	2534987	282445	6549420	16071941	48646944	284025443
8	Ernakulam	91835963	1387787	143100050	3797566	7856975	2365619	11285135	31283517	7162333	5174666	382117	11429543	8404917	59370231	384836419
9	Idukki	28633540	676400	34524958	1063156	1280047	229260	2569663	5868742	2473207	669923	36128	2922777	1228912	7046108	89222821
10	Kottayam	52560806	369021	104788235	1805247	4220361	815669	5449086	17218078	12458799	1736583	269146	6540282	3660896	29502985	241395194
11	Alappuzha	28097483	616363	37026052	818027	2187176	195279	2649350	6031592	1144811	682364	135223	1670530	2125140	16044500	99423890
12	pathanam thitta	23923123	182000	48997649	734967	1781895	619314	1742644	7468590	833214	770405	183189	3447657	1391375	27388072	119464094
13	Kollam	48241220	430407	49309366	898909	1666103	300223	3011322	4153246	1096670	710787	65262	3760450	2125037	5828956	121597958
14	Thiruvananthapuram	118810468	2270006	87764372	1552328	4601317	2250358	4960440	11143434	1849944	1752485	1881850	4559062	5088717	21955372	270440153
Total		757368074	12890046	954485144	18497788	45457671	8566508	70854411	123831681	76187489	19741284	4005297	59545930	56074276	435290088	2642795687

Table - 58

Details of expenditure during financial year 2012-13(by General Category of Institution)

Sl.No	General Category of Institution	Salary and Wages	Rent	Food Items	Telephone & Internet	Electricity Charge	Water Charges	Dress Items	Medical Expenses	Expense for enterprises	Entertainment Charges	Registration/ License fees	Transportation Charge	School/Tuition Fees	Others	Total
1	Children	389711598	4683459	554184474	9872396	23716822	3552419	47591178	33272563	48148204	11425755	1094231	27081990	49704561	251643090	1455682740
2	Disabled	177847399	2167431	168805344	3377146	6593414	1435674	9901034	38469906	15775145	3336144	535723	17847494	1529649	87208625	534830128
3	Old Age	112029985	4338645	163655587	3453148	10782331	1798191	9096203	36500453	7852093	3085159	1925777	10455833	3075192	78112986	446161583
4	Women	31086618	483468	36493315	1033120	2239619	576471	2252285	7687676	3230666	1499088	35696	1970713	1109427	9816059	99514221
5	Others	46692474	1217043	31346424	761978	2125485	1203753	2013711	7901083	1181381	395138	413870	2189900	655447	8509328	106607015
Total		757368074	12890046	954485144	18497788	45457671	8566508	70854411	123831681	76187489	19741284	4005297	59545930	56074276	435290088	2642795687

Table - 59**District wise Details of Assets of Care Homes (Amount in Rs.)**

SL.NO	District	Land and Building	Furniture and Fixtures	Tools and Equipments	Vehicles	Others	Total
1	Kasaragod	697198243	19866841	6064954	12192379	5817494	741139911
2	Kannur	2380222818	34574830	5308832	24349099	7442746	2451898325
3	Wayanad	1235010634	39308078	13658842	22755029	4909733	1315642316
4	Kozhikkode	2540172719	27879057	9564182	26668714	69237240	2673521912
5	Malappuram	2248573855	46261360	13646522	26985830	54681930	2390149497
6	Palakkad	1671967627	78305841	11671156	27620013	7958065	1797522702
7	Thrissur	2567197628	68664819	15427745	45056489	36856708	2733203389
8	Ernakulam	9148406189	121276147	26556001	67775466	48126421	9412140224
9	Idukki	1379529336	26137519	6225169	17300027	3896334	1433088385
10	Kottayam	3399560180	74446138	15399630	39761002	15712639	3544879589
11	Alappuzha	920432461	21607333	4263668	13714554	15517161	975535177
12	pathanamthitta	2769405007	37098390	10153627	18414525	4800784	2839872333
13	Kollam	2318300076	37288222	3350717	32000724	35102199	2426041938
14	Thiruvananthapuram	8482977088	86108916	9199226	31107461	11134833	8620527524
Total		41758953861	718823491	150490271	405701312	321194287	43355163222

Table - 60**Details of Assets of Care Homes (Amount in Rs.) (by General Category of Institution)**

SL.NO	General Category Of Institution	Land and Building	Furniture and Fixtures	Tools and Equipments	Vehicles	Others
1	Child	23036310970	362196075	79602450	216875888	216898087
2	Disabled	6220792915	117881853	30768247	79599748	36855533
3	Old Age	10098954175	183139100	27842038	79886246	30955561
4	Women	1104046810	36448738	5744685	13708867	2683650
5	Others	1298848991	19157725	6532851	15630563	33801456
Total		41758953861	718823491	150490271	405701312	321194287



SURVEY DESIGN DIVISION
DEPARTMENT OF ECONOMICS AND STATISTICS
KERALA

email: ecostatdir@gmail.com, Phone:0471 2305318