



Government of Kerala
Report On
Annual Survey of Industries- Kerala
2008-09



Department of Economics & Statistics

Kerala, Thiruvananthapuram-2012

Website: www.ecostat.kerala.gov.in, Email: ecostatdir@gmail.com



Government of Kerala

**Report On Annual Survey of Industries-Kerala
2008-09**

**Department of Economics & Statistics, Kerala
Kerala, Thiruvananthapuram-2012**

Website: www.ecostat.kerala.gov.in, Email: ecostatdir@gmail.com

Preface

The Annual Survey of Industries (ASI), being the prime source of Industrial Statistics in the Indian Economy provides information on various aspects of the original industrial sector prevailing in India separately by the States a specified region. The present volume is based on the results of ASI 2008-09 Kerala received from the Central Statistical Organization (CSO) (IS Wing), Kolkotta and their findings. The information would be useful in the context of Planning, which usually aims at removing regional imbalances and also for identifying the proper areas where investments could be effective and meaningful.

The Annual Survey of Industries provides the basic statistics of Industrial Sector. It provides information to assess, evaluate, composition and structure of organised manufacturing process and repair services. The survey is conducted annually under the statutory provisions of the Collection of Statistical Act 1953 and the Rules framed there under in 1959. National Sample Survey Organization (NSSO), Field Operations Division (FOD) is conducting the survey at National Level.

The ASI Division of the Directorate of Economics and Statistics under the leadership of Smt. K. Sathyabhama, Additional Director with the help of Sri. Anirudhan. S (Assistant Director) Sri. V. Vijaya Kumar (Research Officer) Sri. Rajendran Kuttikkadu (Research Assistant) Smt. B Sujatha (Research Assistant) and Smt. Devi vysala (Statistical Assistant Grade I) prepared this book. I hope that this publication will be useful as a reference book in Industrial Statistics . Constructive suggestions to improve this publication are always welcome.

V.Ramachandran

Director

Thiruvananthapuram,
Dated: 12/02/2013

Contents

		Pages
Chapter 1	Scope and Coverage	1
Chapter 2	Concepts and Definitions	8
Chapter 3	Principal Characteristics of Industrial sector	14
Chapter 4	Principal Characteristics by Major Economic Activity	17
Annexure-I	National Industrial Classification	27
Annexure-II	Tables-ASI DATA -KERALA	35
Table 1	Estimate of selected characteristics of factory sector by 3-digit industry class (NIC -2008)	36
Table 2	Estimate of (i) employment, (ii) mandays employed and (iii) emoluments paid in the factory sector by their type for each 3-digit industry division (NIC-2008)	45
Table 3	Estimate of selected characteristics of factory sector by 2-digit industry class (NIC 2008)	50
Table 4	Estimate of (i) employment, (ii) mandays employed and (iii) emoluments paid in the factory sector by their type for each 2-digit industry division (NIC-2008)	55
Annexure-III	Tables-ASI DATA – ALL INDIA LEVEL	60
Table 5	Estimate of selected characteristics of factory sector by 3-digit industry class (NIC -2008)	61
Table 6	Estimate of (i) employment, (ii) mandays employed and (iii) emoluments paid in the factory sector by their type for each 3-digit industry division (NIC-2008)	74
Table 7	Estimate of selected characteristics of factory sector by 2-digit industry class (NIC 2008)	81
Table 8	Estimate of (i) employment, (ii) mandays employed and (iii) emoluments paid in the factory sector by their type for each 2-digit industry division (NIC-2008)	86
Table 9	Annual Series For Principal Characteristics of all Industries	91
Table 10	Principal Characteristics By Major States in ASI 2008-09 (Arranged in Descending Order of Net Value Added)	97
Table 11	Principal Characteristics by Rural - Urban Break-up in ASI 2008-09	100
Table 12	Principal Characteristics by Type of Organisation in ASI 2008-09	101

CHAPTER - 1

Scope and Coverage

1. Introduction:

The Annual Survey of Industries, the principal source of Industrial Statistics in India provides statistical information to assess and evaluate, objectively and realistically, the changes in the growth, composition and structure of organized manufacturing sector comprising activities related to manufacturing process, repair services, gas and water supply and cold storage. The survey is conducted annually under the Statutory Provisions of the Collection of Statistics Act, 1953 and the Rules framed there under in 1959 except in the State of Jammu and Kashmir where it is conducted under the Jammu and Kashmir Collection of Statistics Act, 1961 and Rules framed there under in 1964.

2. Historical Background:

Understanding the importance of collection and compilation of data relating to industrial sector of the country, the Government of India after 1930, launched a voluntary scheme for the collection of detailed data from important industries in India. The Census Manufacturing Industries (CMI) conducted under the Industrial Statistics Act, 1942 and Rules framed there under. While the responsibility for collection of the returns and their verification rested with the Statistics Authorities in the States, the Directorate of Industrial Statistics at the Centre was in charge of co-ordination, technical guidance and publication of results.

The CMI was conducted for the accounting years (calendar years). With the implementation of the Factories Act, 1948 the scope of CMI was extended. The frame for the census was the list of factories classified according to the industries maintained by the Chief Inspector of Factories. The criterion of classification of factory was the value of its principal products.

A closely related survey called the Sample Survey of Manufacturing Industries (SSMI) was also conducted according to the need arose from the urgent requirements of the National Income Committee for Statistics relating to the manufacturing industries for the estimation of the contribution from industries to the national income. With the implementation of the Factories Act, 1948 the SSMI covered the factories registered under Section 2m (i) and 2 m (ii).

After independence, Central Statistical Organization (CSO) was set up under the Cabinet Secretariat by the Government of India in 1951 as an apex statistical body for -coordinating the large variety of data collected by various agencies, which was necessitated for adoption of planned economy by the Government. In 1956, the Industrial Statistics Act, 1942 was repealed with the passing of a more comprehensive collection of Statistics Act, 1953. Subsequently Directorate of Industrial Statistics was transferred to the Cabinet Secretariat in 1959 and was attached to Central Statistical Organization as Industrial Statistics Wing.

3. Census of Manufacturing Industries (CMI):

The Directorate of Industrial Statistics launched the Census Manufacturing Industries (CMI) in 1946 with the objective of studying the structure of the Indian industry and estimating its contribution to national income. Because of practical difficulties, the CMI could cover only 29 of the 63 industry groups specified in the Industrial Statistics Act and extended only to 11 States of the Indian Union. It was conducted annually up to the year 1958. Afterwards, the geographical coverage of the CMI extended to 13 States and 2 Union Territories.

4. Sample Survey of Manufacturing Industries (SSMI) :

Following the recommendations of the National Income Committee (1949), the Directorate of Industrial Statistics conducted the first SSMI in 1949 for collecting data from factories falling under the 34 industry groups left out by the CMI and defined under the Factories Act 1934. The technical work including the survey design, sample selection and preparation of schedules was undertaken by the Directorate of Industrial Statistics while the tabulation and analysis of data, report writing etc. was carried out by the Indian Statistical Institute, Calcutta. The SSMI was conducted annually up to the year 1958 by the then Directorate of National Sample Survey (now the NSS Organization). The sampling design adopted envisaged classification of establishments in each of the industries into groups according to the number of workers employed. For industries with marked concentration in particular areas, a further grouping according to States was also done.

ASI refers to the factories defined in accordance with the Indian Factories Act, 1948 and thus has coverage wider than that of the CMI and the SSMI put together and substituted both the CMI and the Sample Survey of Manufacturing Industries (SSMI). The ASI in its present form started in 1960 with 1959 as the reference year and is continuing since then except for the ASI 1972. The Directorate of Industrial Statistics was transferred to CSO in 1957 and renamed as CSO (IS Wing). ASI has replaced both the CMI and SSMI.

5. Annual Survey of Industries:

The Annual Survey of Industries (ASI) is a Statutory Survey conducted under the provisions of the Collection of Statistics Act, 1953 and Rules framed there under in 1959. Deputy Director General (FOD) functions as the Statistics Authority under the Act for the conduct of the ASI. ASI is a record based inquiry. This scheme covers the units registered under the following Acts.

- a) Factories registered under Section 2 m (i) and 2 m (ii) of the Indian Factories Act, 1948 ie. Those factories employing 10 or more workers with power and those employing 20 or more workers and without power respectively.

And

- b) Bidi and Cigar Establishments registered under Bidi and Cigar Workers (condition of employment) Act, 1966.

The survey covers entire country except States /Union Territories of Arunachal Pradesh, Mizoram, Sikkim, and Lakshadweep.

The ASI data are collected in 2 parts namely, Part I relating to Capital, Employment, and Emoluments, Consumption of Fuels, Lubricants and Raw Materials, other Inputs /Outputs, Value Added for use of Central Statistical Organisation and other agencies while Part II relates to Labour turnover, Absenteeism, Labour Cost etc. for use of Labour Bureau. In addition, information on certain key items are collected through a SHORT Schedules on a priority basis for quick tabulation from 1999-2000 onwards. The ASI refers to the factories defined in accordance with the Factories Act, 1948 and thus has coverage wider than that of the CMI and SSMI put together.

6. Scope and Coverage:

The Annual Survey of Industries covers the entire factory sector comprising factories registered under section 2 m (i) and 2 m (ii) of the Factories Act, 1948. The coverage of the factory sector extends not only to manufacturing units but also to others, categorized under services such as those engaged in water supply, sanitary services, motion picture production, laundering, job-dyeing and electricity undertaking. However from 1998-99 onwards all electricity undertaking engaged in generation, transmission and distribution of electricity registered with Central Electricity Authority (CEA) are being excluded. Similarly, Defence installations, technical training institutes, establishments engaged in hotel and café services, and Storage and distribution of oil are not covered. However, the Bidi and Cigar units covered under Bidi and Cigar Workers (condition of employment) Act, 1966 are surveyed under ASI. Geographically the survey covers the entire country, except States/Union Territories of Arunachal Pradesh, Mizoram, Sikkim, and Lakshadweep. From 1998-99 onwards the departmental units such as Railway workshops, RTC workshops, Government mints, Sanitary, water supply, gas storage etc. are not covered, as there are alternative sources of their data compilation for the GDP estimates by the National Accounts Division of CSO.

7. ASI Frame and its updation:

The ASI frame is based on the lists of registered factories /units maintained by the Chief Inspector of Factories (CIF) in each State and those maintained by licensing authorities in respect of Beedi and Cigar Establishments and electricity undertakings. Availability of a complete and up-to-date frame listing all the eligible units is an essential prerequisite for any large-scale survey. In fact, availability of proper frame is one of the most critical requirements for working out correct multiplier to arrive at proper estimate. Regional offices of FOD (NSSO) maintain close liaison with Chief

Inspector of Factories in updating the frame every year. ASI frame should be complete and error free. The updated list of Registered Factories should be forwarded to CSO on quarterly basis regularly.

8. Sampling Design:

The Sampling Design adopted for ASI has undergone considerable changes from time to time taking into account technical and other requirements. The Technical Group on Revision of Sampling Design of ASI recommended a revised Sampling Design in 1997-98. The salient features of stratification of the population for selection of units are (i) Census Sector and (ii) Sample Sector.

9. Census Sector:

1. For industrially less developed States/Uts:
 - a. All industrial units of less industrially developed 12 States/Uts and
2. For States /UTS other than those industrially less developed States /Uts,
 - b. Industrial units having 200 or more workers
3. All electricity undertakings and PSUs (Public Sector Undertaking) not covered as above ie. Industrial units not having 200 or more workers.

Further the sector includes industrial units having significant input / output/GVA/NVA which would jointly contribute to industrial units having 200 or more workers and electricity undertakings and PSUs not covered under industrial units not having 200 or more workers, not less than 90% of NVA within a State. All units with 50 or more workers operating with power and units having 100 or more workers operating without power were covered under Census Sector.

10. Sample sector

All industrial units of the entire ASI frame minus the industrial units of the Census Sector formed the Sample Sector. State X industry constitutes the stratum in the Sample Sector. The sample size is first decided for each industry group at all India level and sample size for each industry within each State (stratum) is allocated in proportion to sampling variation measured in terms of RSE (Relative Standard Error) but not the number of factories. CSO (IS Wing) is responsible for selection of units in accordance with sampling design recommended by expert committee from time to time. Generally there is a certain minimum coverage in the stratum and appropriate adjustment may be made by amalgamating industries of similar nature, wherever necessary, using a circular systematic sampling technique.

Sample Sector comprised of 50 / 100 workers operating with or without power in the major states was covered fully. In 1997-98 a consensus decision has been taken so as not to attempt for the district level estimates. This design has been more or less continued in 2003-04 with the modification that the Census Sector was defined to include units having 100 or more workers, instead of 200 or more workers and only 5 industrially backward States /Uts namely Manipur, Meghalaya, Nagaland, Tripura and Andaman Nicobar Islands were covered in the Census Sector. The Public Sector Undertakings were also covered in the general scheme i.e., units having 100 or more workers in Census Sector and rest in Sample Sector.

The entire sample was selected in the form of two independent sub-sample using Circular Systematic Sampling Method. Sub-samples were one or more same units were selected in both the sub-samples were discarded and fresh sub-samples were drawn.

11. Industrial Classification:

A standard Industrial Classification is essential for developing a proper database in any country. Such classifications are frequently used in classifying the economically active population, statistics of industrial production and distribution, the different fields of labour statistics and other economic data such as national income. Comparability of statistics available from various sources, on different aspects of the economy, and usability of such data for economic analysis are prerequisites for standardization of a system of classification. The classification of economic activity is under 3 broad categories namely,

- 1) Primary Production (Agriculture and Mining)
- 2) Secondary Production (Manufacturing and Construction)
- 3) Services (Transport, Commerce, and Administration etc.)

The Central Statistical Organisation (CSO) which is responsible for co-ordination of statistical activities in the country as well as for evolving and maintaining statistical standards took up

the task of evolving a standard industrial classification as early as in 1960 and evolved a Standard Industrial Classification (SIC) in 1962. Considering the significant changes in the organisation and structure of the industries the necessity to revise the industrial classification has been felt from time to time and the SIC 1962 revised in the years 1970, 1987, and 1998. The latest classification, ie., NIC 1998 developed on the basis of UNISIC 1990(Rev.3) has been adopted from ASI 1998-99.

12. Reference Period and Schedule of Enquiry:

In the beginning the Reference Period for the ASI was the Calendar Year for all items except fixed assets and working capital for which it was the accounting year. After a careful study of the relevant issues the reference year was changed to the financial year for all the items with effect from ASI 1988-89 and for ASI Part II data it continues to be calendar year. Reference Period for ASI 2008-09 is the accounting year of the factory ending on any day during the fiscal year 2008-09. Thus ASI 2008-09 data collected from the respective establishment relate to their accounting year ended on any day between 1st April 2008 and 31st March 2009. Survey conducted in the year 2009-10.

The schedule has been designed to meet substantially the national and international requirements for industrial data. ASI schedule is the basic tool to collect desired data. A comprehensive schedule has been devised to collect ASI data. ASI schedule consists of different parts. In the initial rounds the schedule-sought particulars relating to manufacturing activity only. Over the years, additions were made to meet the specific data requirements of various organizations. By the year 1973-74 the schedule consisted of 5 parts:

1. Part I on Manufacturing
2. Part II on Labour Turn over
3. Part III on Stocks and Consumption of components and accessories in small-scale sector.
4. Part IV on Construction expenditure and
5. Part V on Indirect Taxes, Sales subsidies and capacity of power equipment installed.

It was felt that ASI schedule had become too lengthy and complicated. So modifications made in the schedule consisting of 3 parts namely, Part I covering data on Manufacturing activities, Part II covering Labour and Part III covering Construction which was adopted in 1974-75. Part III was canvassed until ASI 1997-98 after which it was dropped for want of finalizations of the exact data requirements by NBO (National Buildings Organisation). Thus from ASI 1998-99 onwards only Part I and Part II are being canvassed in addition to a "Short Schedule" which has been introduced from ASI 1999-2000 with a view to collect data on certain key parameters, mainly for the purpose of preparing quick GDP estimates. In a view of the urgent requirement of such data, it was decided to accept the provisional data wherever actual audited data was not available. Appropriate action is taken before each ASI round, to implement necessary revisions and modifications in response to specific data demands.

13. Unit of Enumeration:

The Primary Unit of Enumeration in the survey is a Factory in the case of manufacturing industries, a Workshop in the case of repair services, an undertaking or a licensee in the case of electricity, gas and water supply undertakings, an establishment in the case of Bidi and Cigar industries. The owner of two or more establishments located in the same region and pertaining to the same industry group and belonging to the same scheme (Census or Sample) was however, permitted to furnish a single consolidated return called "Joint Return". Wherever different parts of single integration unit of production are registered as different factories the owner is permitted to submit a single return for the whole unit provided the constituent factories are located in the same State.

14. Form of Returns

The returns are submitted in the prescribed form for the purpose of ASI under the collection of Statistics (Central) rules 1959. As the data relating to a single factory cannot be published in a view of restrictive class in the Act, safeguarding the interest of the owners, the industries in such case had been combined and data published for a group of industries.

State Government participates in the survey programme in a scale to commensurate with their requirements. Our department has started collection of data under this scheme with effect from 2000 onwards. The State Level Co-ordination Committee (SLCC) is the nodal agency, co-coordinating the fieldwork of ASI in the State. Principal Secretary to Government, Industries Department is the Chairman of the SLCC

15. Limitations:

As the data relating to less than 3 units in an industry group cannot be published, the data in respect of such industrial units are combined with the nearest sub-group of group keeping the nearness in the line of production as far as possible. Also as the figures were rounded up to the nearest integer at various levels of aggregates during the course of tabulation, there might be slight variation in the total presented at higher level of aggregation and the sums of corresponding constituents showing different tables.

CHAPTER 2
CONCEPTS AND DEFINITIONS

1. Reference Year:

Reference year for ASI 2008-09 is the accounting year of the factory ending on 31st March 2009 while the survey was conducted in 2009-2010.

2. Factory:

Factory is one, which is registered under 2m(i) and 2 m (ii) of the Factories Act, 1948.

The Sections 2m(i) and 2 m (ii) refer to any premises including the precincts thereof: (a) Whereon 10 or workers are working or were working on any day of the preceding 12 months, and in any part of which a manufacturing process is being carried on with the aid of power, or is ordinarily so carried on or (b) Whereon

20 or more workers are working or were working on any day of the preceding 12 months and in any part of which a manufacturing process is being carried on without the aid of power or is ordinarily so carried on.

3. Fixed Capital:

Fixed capital represents the depreciated value of fixed assets owned by the factory as on the closing day of the accounting year. Fixed assets are those that have a normal productive life of more than one year. Fixed capital includes land including lease hold land, buildings, plant and machinery, furniture and fixtures, transport equipment, water system and roadways and other fixed assets such as hospitals, schools etc. used for the benefit of factory personnel

4. Physical Working Capital:

Physical working capital is the total inventories comprising of raw materials and components, fuels, and lubricants, spares, stores, and others, semi finished goods and finished goods as on the closing day of the accounting year. However, it does not include the stock of the materials, fuels, stores etc. Supplied by others, to the factory for processing and finished goods processed by the factory from raw materials supplied by others.

5. Working Capital:

Working capital is the sum total of Physical Working Capital as already defined above and the cash deposits in hand and at bank and the net balance receivable over amounts payable at the end of the accounting year. Working capital, however, excludes unused overdraft facility, fixed deposits irrespective of duration, advances for acquisition of fixed assets, loans and advances by proprietors and partners irrespective of their purpose and duration, long term loans including interest thereon and investments.

6. Productive Capital

Productive Capital is the total of fixed capital and Working capital as defined above.

7. Invested Capital:

Invested Capital is the total of fixed capital and Physical working capital as defined above.

8. Gross value of Plant and Machinery:

Gross value of Plant and Machinery represents the total original (un depreciated) value of installed plant and machinery at the end of the accounting year. It includes the book value of the newly installed plants and machinery and the approximate value of rented in plant and machinery at the time of renting in but exclude the value of rented out plants and machinery. Total value of all the plants and machinery acquired on hire-purchase basis is also included.

9. Outstanding Loans:

Outstanding loans represents all loans whether short term or long term, whether interest bearing or not, outstanding according to the books of the factory as on the closing day of the accounting year.

10. Rent Paid:

Rent paid represents the amount of royalty paid in the nature of rent for the use of the fixed assets in the factory.

11. Interest paid:

Interest paid includes all interest paid on factory account on loans, whether short term or long term, irrespective of the duration and the nature of agency from which the loan was taken. Interest paid to partners and proprietors on capital or loan are excluded.

12. Rent Received:

Rent received represents the amount of royalty received in the nature of rent for the use of the fixed assets in the factory.

13. Interest Received:

Interest received includes all interest paid on factory account on loans, whether short term or long term, irrespective of the duration and the nature of agency from which the loan was taken. Interest paid to partners and proprietors on capital or loan are excluded.

14. Workers:

Workers are defined to include all persons employed directly or through any agency whether for wages or not and engaged in any manufacturing process or in cleaning any part of the machinery or premises used for manufacturing process or in any other kind of work incidental to or connected with the manufacturing process or the subject of the manufacturing process. Labour engaged in the repair and maintenance or production of fixed assets for factory's own use or labour employed for generating electricity or producing coal, gas etc. are included.

15. Employees:

Employees include all workers defined above and persons receiving wages and holding supervisory or managerial positions engaged in administrative office, store keeping section and welfare section, sales department as also those engaged in purchase of raw materials etc. or purchase of fixed assets for the factory and watch and ward staff.

16. Total Persons Engaged:

Total Persons engaged includes the employees as defined above and all working proprietors and their family members who are actively engaged in the work of the factory even without any pay and the unpaid members of the co-operative societies who worked in or for the factory in any direct or productive capacity. The number of workers or employees is an average number obtained by dividing man-days worked by the number of days the factory had worked during the reference year.

17. Man days:

Man-days represent the total number of days worked and the number of days paid for during the accounting year. It is obtained by summing up the number of persons of specified categories attending in each shift over all the shifts worked on all days.

18. Wages and Salaries:

Wages and Salaries are defined to include all remuneration in monetary terms and also payable more or less regularly in each pay period to workers as compensation for work done during the accounting year. It includes:

- a) Direct wages and salaries (ie. basic wages/salaries, payment of overtime, dearness, compensatory, house rent and other allowances)
- b) Remuneration for the period not worked (ie. basic wages/salaries and allowances payable for leave period, paid holiday, lay-off, payments and compensation for unemployment, if not paid from sources other than employers)
- c) Bonus and ex-gratia payment paid both at regular and less frequent intervals (ie., incentive bonuses, productive bonuses, profit sharing bonuses, festival or year-end bonuses etc.)

It excludes lay off payments that are made from trust

or other special funds set up exclusively for this purpose, ie. Payments not made by the employer. It also excludes imputed value of benefits in kind, employer's contribution to old age benefits and other social security charges, direct expenditure on maturity benefits, crèches and other group benefits, traveling and other expenditure incurred for business purposes and reimbursed by the employer are excluded. The wages are expressed in terms of gross value ie, before deduction for fines, damages, taxes, provident fund, employee's state insurance contribution etc.

19. Contribution to Provident fund and other funds:

This includes old age benefits like provident fund, pension, gratuity, etc. and employer's contribution towards other social security charges such as employee's state insurance, compensation for work injuries and occupational diseases, provident fund linked insurance, retrenchments and lay off benefits.

20. Workmen and staff welfare expenses:

This includes group benefits like direct expenditure on maturity, crèches, canteen facilities, educational, cultural, recreational facilities and grants to trade unions, co-operative stores etc. meant for employees.

21. Total Emoluments:

'Total emoluments' is defined as the sum of wages and salaries, employer's contribution as provident fund and other funds and workmen and staff welfare expenses as defined above.

22. Fuels Consumed:

Fuels consumed represents total purchase value of all items of fuels such as coal liquefied petroleum gas, petrol, diesel, electricity lubricants, water etc. Consumed by the factory during the accounting year but excluding the items, which directly enter into the manufacturing process.

23. Materials consumed:

Materials consumed represents the total delivered value of all items of raw materials, components, chemicals, packing materials, and stores which actually enter into the production process of the factory during the accounting year. It also includes the cost of all materials used for the construction of building etc. for the factory's own use. It however, excludes all intermediate products consumed during the accounting year. Intermediate products are those products, which are produced by the factory but are subject to further manufacturing.

24. Ex-Factory value:

Ex-factory value of all products and by-products manufactured is attained at the rate of net sale value (inclusive of subsidies etc.) with respect to each of the items.

25. Total Input:

Total input comprises of total value of fuels, materials consumed as well as expenditures such as cost of contract and commission work done by others on materials supplied by the factory, cost of materials consumed for repair and maintenances work done by others to the factory 's fixed assets, inward freight and transport charges, rates and taxes, (excluding income tax) postage, telephone and telex expenses, insurance charges, banking charges, cost of printing and stationery and purchase value of goods sold in the same condition as purchased. Rent paid and interest paid is not included.

26. Total Output:

Total output comprises of total ex-factory value of products and by-products manufactured as well as other receipts from non-industrial services rendered to others, work done for others on materials supplied by them, value of electricity produced and sold, sale value of goods sold in the same conditions purchased, addition in stock of semi-finished goods and value of own construction. Rent received and interest received is not being included from ASI 2001-'02.

27. Depreciation:

Depreciation is consumption of fixed capital due to wear and tear and obsolescence during the accounting year and is taken as provided by the factory owner or is estimated on the basis of cost of installation and working life of fixed assets.

28. Net Value Added:

Net value added is arrived by deducting total input and depreciation from total output.

29. Components and Accessories Consumed:

Components and accessories consumed are the portion of materials consumed and shown separately to represent as a special type of consumption.

30. Imported Materials Consumed on Actual Use

This comprises of the portion of materials consumed that are imported from other countries. It may be raw materials or fuels or components and accessories of the input basket.

31. Semi--finished goods

Finished goods refer to the imputed value of all materials which have been partially processed by the factory but which are not usually sold without further processing. It includes the work in progress for materials supplied by others, but excludes the value of semi-finished fixed assets produced for factory's own use,

32. Finished Goods:

Finished goods of the factory are the ultimate products ready for sale. It does not require further processing but needs packaging and labeling etc.

CHAPTER-3

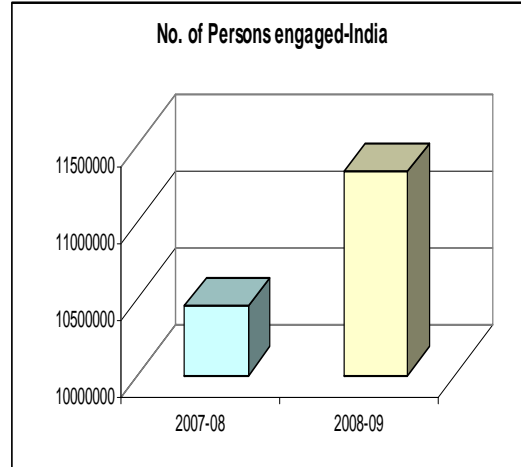
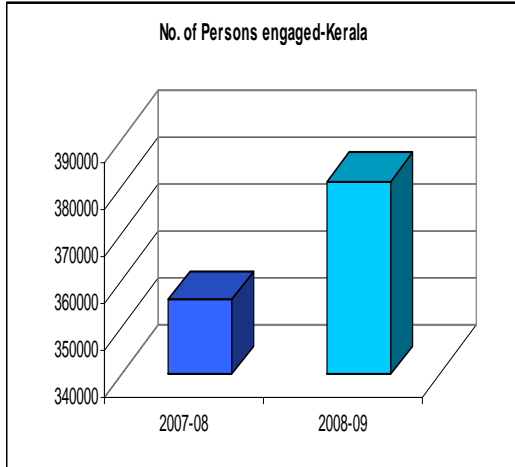
PRINCIPAL CHARACTERISTICS OF INDUSTRIAL SECTOR

Table -3.1

**Principal Characteristics of Industrial Sector during 2007-2008 and 2008-2009
Kerala and All India-Relating to Workers**

Sl. No	Characteristics	Kerala			India		
		2007-2008	2008-2009	%of variation	2007-2008	2008-2009	%of variation
A	No. of persons engaged	356147	381558	7.13	10452535	11327485	8.37
1	Workers	308641	331043	7.26	8198110	8776745	7.06
1.1	Directly Employed	268486	271204	1.01	5659750	5977328	5.61
	Men	91915	93679	1.92	4539837	4779073	5.27
	Women	176571	177525	0.54	1119777	1198255	7.01
	Children	0	0	0.00	136	0	-100.00
1.2	Employed through Contractors	40155	59839	49.02	2538360	2799417	10.28
2	Employees other than workers	45707	48080	5.19	2180385	2476049	13.56
0	Supervisory and Managerial	24547	23487	-4.32	978139	1086849	11.11
	Other employees	21160	24593	16.22	1202246	1389200	15.55
3	Unpaid family members / Proprietors etc.	1800	2436	35.33	74040	74692	0.88
B	Total mandays employed (in ' 000 s)	91292	101329	10.99	3144881	3386622	7.69
C	Wages and salaries including Employer's contribution (in Lakhs)	273127	326167	19.42	12502430	15233620	21.85
1	Wages and salaries including bonus (in Lakhs)	227329	269263	18.45	10544284	12944123	22.76
1.1	Wages and salary	209002	248173	18.74	9984395	12262100	22.81
1.1.1	Workers (wages to workers)	133235	157616	18.30	5103023	5977184	17.13
1.1.2	Supervisory and Managerial	50239	57982	15.41	3375002	4344878	28.74
1.1.3	Other employees	25528	32575	27.60	1506370	1940038	28.79
1.2	Bonus to all staff	18327	21090	15.08	559890	682023	21.81
2	Employer's contribution	45798	56904	24.25	1958146	2289497	16.92

In the above table the item 'persons employed through contractors' shows an increase of 49.02 % during 2008 -2009 in Kerala where as in India it is only 10.28 %. Wages and salaries in Kerala increased by 18.74 % and in national level it is 22.81 %..The difference between Kerala and India is 4.07%. Bonus to staff in Kerala is 15.08 % while in India it is 21.81 %.



Under the heading 'directly employed', child labour is there in India, during 2007-2008 it is 136. But no child labourers is reported during the period 2008-09 both in the State and national level. Total man days employed shows a variation of increase around 10.99% in the state level.

Table -3.2

**Principal Characteristics Of Industrial Sector During 2007-2008 and 2008-2009
Kerala and All India**

SI No	Characteristics	Kerala			India		
		2007-2008	2008-2009	%of variation	2007-2008	2008-2009	%of variation
1	Total No of workers	308641	331043	7.26	8198110	8776745	7.06
2	No of persons engaged	356147	381558	7.13	10452535	11327485	8.37
3	Wages to workers	133235	157616	18.30	5103023	5977184	17.13
4	Total emoluments	227329	269263	18.45	10544284	12944123	22.76
5	No of factories	5584	5867	5.07	146385	155321	6.10
6	Fixed capital	914336	1189335	30.08	84513209	105596614	24.95
7	Working capital	418223	272472	-34.85	31695306	31123298	-1.80
8	Invested capital	1707590	1928079	12.91	128012553	153517773	19.92
9	Outstanding Loans	471336	742539	57.54	45399645	53641948	18.15
10	Fuels consumed	252186	329017	30.47	12956170	15216203	17.44
11	Materials consumed	4125232	5191406	25.85	175288695	206598245	17.86
12	Total inputs	4874337	6208382	27.37	222295282	266148638	19.73
13	Products and By products	5051188	6456514	27.82	247071651	286314842	15.88
14	Total value of outputs	5556577	7090489	27.61	277570904	327279786	17.91
15	Depreciation	89416	111595	24.80	7116354	8354590	17.40

Table -3.2 (contd.)

16	Net value added	592824	770511	29.97	48159268	52776558	9.59
17	Rent paid	8390	11756	40.12	750549	975778	30.01
18	Interest paid	67818	84225	24.19	5148688	6868048	33.39
19	Rent received	3419	1934	-43.43	557242	232299	-58.31
20	Interest Received	4366	5416	24.05	493411	674095	36.62
21	Net income	516616	674531	30.57	42260031	44932732	6.32
22	Net fixed capital formation	60455	140754	132.82	10662743	14240111	33.55
23	Gross fixed capital formation	149872	252350	68.38	17779098	22594701	27.09
24	Addition in stock of :	181045	-105543	-158.30	8450845	3563843	-57.83
	a. Materials ,fuels etc	181397	-106930	-158.95	4952720	1974707	-60.13
	b. Semi finished goods	-4298	13869	-422.68	1060215	909350	-14.23
	Finished goods	3946	-12482	-416.32	2437910	679786	-72.12
25	Gross capital formation	330916	146806	-55.64	26229942	22594701	-13.86
26	Profit	243489	348364	43.07	29757600	29699112	-0.20
27	Gross value addition to fixed Capital	193030	284615	47.45	22661180	29670250	30.93

Regarding the above table, the total number of workers in Kerala in the registered factories during 2008-2009 shows an increase of 7.26 %. At the same time the number of factories shows 5.07% increase during 2008-2009. Further the fixed capital during 2008-2009 increased by 30.08% while the working capital decreased by 34.85% and invested capital increased by 12.91 %. The total inputs increased by 27.37 % and total output by 27.61 %. Interest received shows an increase by 24.05% during 2008-2009. Net value added increased by 29.97% in Kerala but in India during 2008 - 2009 it increased only by 9.59 %. Rent paid increased by 40.12 % in Kerala but all India level increase is by 30.01% only. In the case of rent received in Kerala decreased by 43.43 % during 2008 -2009 but in India decreased by 58.31%. The net income in Kerala increased by 30.57 %. But in India it is 6.32 % only..The characteristic net fixed capital formation in Kerala increased to 132.82 % while in India the increase is 33.50%. There is wide variation between the State level and all India figures during 2008-2009.Gross fixed capital formation during 2008-2009 in Kerala it is 68.8 %, while in India it is 27.09%. In the case of addition in stock of materials, fuels etc. in Kerala it is 158.95 % decrease while in India the decrease is 60.13%. Semi finished goods in Kerala shows decrease of 422.68% where as in India it is 14.23 %. It is true in the case of finished goods also. In Kerala it is 416.32% decrease and national level it is 72.12% decrease. Gross capital formation also varies to a measure of 55.64% decrease in Kerala and to 13.86 % decrease in India.In the case of Profit it is 43.07% increase in Kerala whereas it is 0.2% decrease in national level.

CHAPTER 4
PRINCIPAL CHARACTERISTICS BY MAJOR ECONOMIC ACTIVITY

Table -4.1

Principal Characteristics by Major Economic Activity

SI No	Principal characteristics	Unit	Manufacturing	Others	All
1	Factories	Number	5527	340	5867
		%	94.20	5.80	100
2	No of factories in operation	Number	5049	315	5364
		%	94.13	5.87	100
3	Fixed capital	Rs in Lakhs	1136445	52890	1189335
		%	95.55	4.45	100
4	Invested capital	Rs in Lakhs	1863178	64901	1928079
		%	96.63	3.37	100
5	Workers	Number	322374	8669	331043
		%	97.38	2.62	100
6	Total persons engaged	Number	367792	13766	381558
		%	96.39	3.61	100
7	Wages to workers	Rs in Lakhs	151515	6101	157616
		%	95.35	4.65	100
8	Input	Rs in Lakhs	5901422	306960	6208382
		%	95.06	4.94	100
9	Gross output	Rs in Lakhs	6751661	338828	7090489
		%	95.22	4.78	100
10	Depreciation	Rs in Lakhs	103696	7899	111595
		%	92.92	7.08	100
11	Net value added	Rs in Lakhs	746542	23969	770511
		%	96.89	3.11	100
12	Net income	Rs in Lakhs	653777	20754	674531
		%	96.92	3.08	100

From the above table it is understood that during the year 2008-2009, the total number of registered factories is 5867 out of which majority is from the manufacturing sector. The number of factories registered under the manufacturing sector is 94.2%, where as in other sector it is only 5.8%. Thus manufacturing sector plays a crucial role in the industrial economy. Taking into consideration the number of factories in operation, 94.13% shows in manufacturing sector and 5.87% in other sector. Out of 331043 workers employed, 97.38% of the workers are in the manufacturing sector and total number of persons engaged shows 96.39%. This table also gives an idea about the stock of capital, input and gross output etc. The total stock of fixed and invested capital in the manufacturing sector is 95.55% and 96.63% respectively and the total input of manufacturing sector is 95.06%. The net value added during the year from the manufacturing sector is 96.89%.

Table -4.2

Table showing variation of Principal characteristics by major economic activity between 2007-08 and 2008-09 .

SI No	Characteristics	Unit	Manufacturing			Others		
		Numbers	2007-2008	2008-2009	% of Variation	2007-2008	2008-2009	% of Variation
1	2	3	4	5	6	8	9	
1	No of factories	Numbers	5311	5527	4.07	273	340	24.54
2	No of factories In operation	Rs in Lakhs	4930	5049	2.41	273	315	15.38
3	Fixed capital	Rs in Lakhs	874910	1136445	29.89	39426	52890	34.15
4	Invested capital	Numbers	1649298	1863178	12.97	58292	64901	11.34
5	Workers	Numbers	300752	322374	7.19	7889	8669	9.89
6	Total persons Engaged	Rs in Lakhs	345598	367792	6.42	10549	13766	30.50
7	Wages to Workers	Rs in Lakhs	128492	151515	17.90	4743	6101	20.63
8	Total inputs	Rs in Lakhs	4670924	5901422	26.34	203413	306960	50.90
9	Gross output	Rs in Lakhs	5328915	6751661	26.70	227662	338828	48.83
10	Depreciation	Rs in Lakhs	83339	103696	24.43	6077	7899	29.98
11	Net value added	Rs in Lakhs	574653	746542	29.91	18171	23969	31.91
12	Net income	Rs in Lakhs	502439	653777	30.12	14177	20754	46.39

SI no	Characteristics	Unit	All		
		Numbers	2007-08	2008-09	% of Variation
1	2	3	10	11	12
1	No of factories	Numbers	5584	5867	5.07
2	No of factories in Operation	Rs in Lakhs	5203	5364	3.09
3	Fixed capital	Rs in Lakhs	914336	1189335	30.08
4	Invested capital	Numbers	1707590	1928079	12.91
5	Workers	Numbers	308641	331043	7.26
6	Total persons engaged	Rs in Lakhs	356147	381558	7.13
7	Wages to workers	Rs in Lakhs	133235	157616	18.30
8	Total inputs	Rs in Lakhs	4874337	6208382	27.37
9	Gross output	Rs in Lakhs	5556577	7090489	27.61
10	Depreciation	Rs in Lakhs	89416	111595	24.80
11	Net value added	Rs in Lakhs	592824	770511	29.97
12	Net income	Rs in Lakhs	516616	674531	30.57

The above table shows the comparison of principal characteristics of industrial sector during 2007 –2008, 2008-09. In the manufacturing sector the number of factories increased by 4.07% in the year 2008-2009 but the total number of factories increased by 5.07% . In the case of the other sector, there is a remarkable variation of 29.97% in net value addition and 30.57% in Net income during the year 2008-2009. The table overall shows an increasing trend in number of factories, capital investment, total input , total output , net income etc.

Structural Ratios And Technical Co-efficient By Major Economic Activity 2008-2009

Table -4.3

Factory Related

SI No	Item	Unit	Manu- facturing	Others	All
1	Fixed Capital per factory	Rs in Lakhs	205.62	155.56	202.72
2	Gross output per factory	Rs in Lakhs	1221.58	996.55	1208.54
3	Net value added per factory	Rs in Lakhs	135.07	70.50	131.33
4	Workers per factory	Numbers	58.33	25.50	56.42
5	Persons engaged per factory	Numbers	66.54	40.49	65.03

Table -4.4

Worker related

SI No	Item	Unit	Manu- facturing	Others	All
1	Fixed capital per person engaged	Rs in Lakhs	3.09	3.84	3.12
2	Gross output per person engaged	Rs in Lakhs	18.36	24.61	18.58
3	Net value added per person engaged	Rs in Lakhs	2.03	1.74	2.02
4	Wages per worker	Rs in Lakhs	0.70	0.91	0.71

Table -4.5

Ratio

SI No	Item	Unit	Manu- facturing	Others	All
1	Ratio of fixed capital to net value added	Nil	1.52	2.21	1.54
2	Ratio of Fixed capital to Gross output	Nil	0.17	0.16	0.17
3	Ratio of Net value added to gross output	Nil	0.11	0.07	0.11

The above three table shows the structural ratios and technical co efficient by major economic activities during the year 2008-09. The fixed capital utilised by each factory in the manufacturing sector is Rs 205.62 Lakhs and in other sector it is Rs. 155.56 Lakhs. Gross output per factory shows an amount of Rs. 1221.58 Lakhs in the manufacturing sector while it is Rs 996.55 Lakhs in the other sector. Thus manufacturing sector has a prime role in the case of gross output per factory. The

number of workers and persons engaged per factory is higher in the manufacturing sector, than in other sector. In the case of net value added per factory in the manufacturing sector is Rs 135.07 Lakh whereas Rs 70.50 Lakh in the other sector during the year 2008-09.

Fixed capital per person engaged, Gross output per person engaged, and wages per worker all show an increase in other sectors than in manufacturing sector. Net value added per person engaged alone shows a decrease in the other sector. The ratio of fixed capital to net value added is higher in the other sector than manufacturing sector whereas the ratio of fixed capital to gross output and net value added to gross output are also higher in the manufacturing sector.

Table -4.6**Fuels and Materials Consumed, GVA, NVA, Etc 2008-2009**

NIC code	Fuels Consumed	Materials Consumed	Total Inputs	Gross value Added	Depreciation	Net value Added
016	3	60	70	-9	13	-22
102	5971	117322	133782	12632	2205	10426
103	108	2665	4064	10	120	-110
104	1611	79061	89569	3178	1473	1705
105	2482	50105	59232	8229	1715	6513
106	4785	125392	164246	7294	2696	4597
107	5089	380888	469227	94894	4738	90156
108	1085	24911	30898	8441	646	7795
110	1064	37094	52869	7330	3280	4051
120	104	2209	6740	10061	20	10041
131	6874	44628	58373	2366	9319	-6953
139	1717	54891	70857	-921	3308	-4230
141	706	14545	17176	9263	971	8291
143	7	398	548	115	8	107
151	53	2845	3667	1027	50	977
152	2068	23059	28497	7430	1540	5890
161	262	5920	7199	1687	93	1594
162	2412	54591	65638	11045	1676	9369
170	11467	47745	63863	22541	2682	19860
181	609	15600	22138	18154	803	17351
192	111264	2450287	2580966	185013	19084	165929
201	33869	260705	307660	33583	8602	24980
202	4477	67014	91904	36661	2507	34154
210	2922	27383	35913	15040	2661	12379
221	18472	374509	430441	108100	7138	100962
222	3240	40724	50560	14208	2062	12145
231	2623	3203	6181	915	285	631
239	21176	47969	79891	33572	5389	28183
241	55105	473956	552660	31126	5148	25978
242	9017	33445	46616	7452	1363	6090

243	6746	22181	31502	2335	795	1539
251	106	1717	2597	870	51	818
259	943	7246	11645	2388	365	2023
261	1559	54522	66828	25707	2351	23357
263	270	2585	5033	1551	75	1476
264	1	6	16	-5	5	-10
267	75	8397	9225	5656	37	5619
271	541	24888	27475	13727	260	13467
272	0	0	0	0	9	-9
273	120	3969	4309	1347	100	1246
274	39	1807	3185	578	87	491
279	283	3161	7609	9467	1065	8402
281	628	15719	18846	8783	1184	7599
282	790	21402	24569	8873	703	8171
292	27	378	778	313	19	295
293	3	32	211	64	6	57
301	1640	44160	90896	51214	875	50339
309	236	1292	2124	1309	175	1135
310	413	7637	9028	1660	416	1244
321	36	2940	3434	586	119	467
325	166	3464	4996	4147	194	3953
329	15	220	277	154	15	139
331	48	1810	2712	1251	31	1221
383	346	280	690	303	111	191
581	1206	31507	41991	17524	3051	14473
Other	2137	66963	306960	31868	7899	23969
TOTAL	329017	5191406	6208382	882107	111595	770511

Table -4.7

**Rent, Loan, Interest Gross Value Of Plant And Machinery, Etc.
Value Of Products And Byproducts, Value Of Output Etc**

NIC Code	Rent Paid For Fixed Assets	Outstanding Loans	Interest Paid	Rent Received For Fixed Assets	Interest Received	Gross Value Of Plant And Machinery	Value Of Products And By Products	Total Output
016	0	0	0	0	0	91	59	61
102	441	16869	8537	261	23	12157	123283	146414
103	2	221	79	2	1	308	3567	4074
104	76	7024	1114	30	17	3669	88752	92747
105	58	6615	385	0	29	3997	65053	67461
106	46	13567	2127	167	135	6799	133132	171540
107	1083	66362	8323	291	139	17203	498553	564121
108	38	1705	523	1	34	5624	33653	39339
110	173	8741	694	30	21	9874	48934	60199
120	50	41	20	0	0	0	5488	16801
131	76	91350	7723	4	124	100970	53992	60739
139	410	34935	7344	15	125	20246	60932	69936

Table -4.7(contd.)

141	152	8687	1357	0	43	9101	22816	26439
143	0	53	0	0	0	0	555	663
151	34	403	121	0	0	280	4601	4694
152	32	2329	497	0	23	5964	34533	35927
161	57	468	138	0	1	576	8003	8886
162	197	10873	1816	106	90	10823	72104	76683
170	182	5583	1458	66	142	51176	85599	86404
181	416	21125	1436	36	151	7529	17545	40292
192	1012	8507	931	0	407	250705	2753958	2765979
201	319	31643	4979	220	1114	164885	336947	341243
202	152	7217	2132	56	42	28255	117514	128565
210	805	26426	2348	20	121	11110	48073	50953
221	284	27891	3968	45	495	70660	500122	538541
222	901	9950	1618	8	31	7181	62422	64768
231	5	2845	551	0	0	5237	7093	7096
239	1156	21936	1554	35	363	40810	110660	113463
241	33	98509	6768	0	994	49153	570584	583786
242	24	3820	940	3	23	26637	53026	54068
243	19	7797	943	8	16	5088	33460	33837
251	14	616	19	0	3	140	1503	3467
259	204	922	111	6	0	4925	11697	14033
261	293	124863	4494	257	284	32428	81451	92535
263	4	17636	71	0	15	599	4705	6584
264	0	0	0	0	0	91	0	11
267	0	592	77	1	2	1159	14803	14881
271	39	1339	222	1	177	2747	40487	41202
272	0	28	0	58	0	421	0	0
273	4	2180	452	0	0	5002	5613	5656
274	3	565	33	2	0	314	2653	3763
279	282	0	173	0	4	5030	10924	17076
281	190	9164	946	0	38	14305	27428	27629
282	94	2967	519	1	40	7258	31671	33442
292	32	25	20	0	0	77	652	1091
293	0	0	9	0	0	0	112	275
301	79	1759	1953	180	43	14202	112209	142110
309	7	10421	69	0	0	4475	1635	3433
310	21	3353	827	0	0	1586	10269	10688
321	44	64	151	7	0	695	3499	4020
325	37	356	45	1	0	822	9092	9143
329	5	24	4	0	1	193	423	431
331	31	290	69	0	0	348	2516	3963
383	0	1016	36	0	0	1147	924	993
581	689	9147	1734	12	37	23440	58219	59515
Other	1451	11718	1763	2	69	60312	69017	338828
TOTAL	11756	742539	84225	1934	5416	1107825	6456514	7090489

Table -4.8**Details Regarding Wages and Salaries No Of Workers etc. at 2 Digit Level. 2008-09.**

NIC Code	Total Persons Engaged	No of Workers	Wages To Workers	Total Emoluments
01	24	16	5	12
10	167265	156955	38856	54294
11	2643	2111	1872	3261
12	43682	42214	6794	8297
13	21479	18604	9226	14230
14	7800	7125	3440	4295
15	3030	2577	1249	1828
16	10603	8347	3578	6668
17	5398	4369	5479	8331
18	3188	1877	1772	4411
19	5048	3989	7499	15890
20	12153	7831	15174	28918
21	6425	4424	2983	6470
22	22399	17574	13959	22378
23	16685	13386	8795	14494
24	12180	10541	7164	10451
25	2682	2132	1945	2761
26	5069	3429	3223	9049
27	4617	3458	4142	7450
28	4888	3294	4178	8255
29	328	246	124	173
30	5072	4427	6547	15082
31	1649	1300	669	968
32	780	608	385	664
33	710	527	562	809
38	313	233	45	135
58	1684	783	1852	7179
Other	13767	8670	6101	12509
Total	381558	331043	157616	269263

Table -4.9**Principal Characteristics Of Major Industrial Activities For The Last 10 Years (All India Level) 1998-99 To 2008-09.**

SI No	Factors	Unit	1998-99	2008-2009	% of Increase
1	No Of Factories	Numbers	131706	155321	17.93
2	Fixed Capital	Rs In Lakhs	39115145	105596614	169.96
3	Invested Capital	Rs In Lakhs	53706813	153517773	185.84
4	No Of Workers	Numbers	6364464	8776745	37.90
5	Total Persons Engaged	Numbers	N.A	11327485	0.00
6	Wages To Workers	Rs In Lakhs	2482648	5977184	140.76
7	Total Inputs	Rs In Lakhs	61004389	266148638	336.28
8	Total Outputs	Rs In Lakhs	78377081	327279786	317.57
9	Depreciation	Rs In Lakhs	2826587	8354590	195.57
10	Net Value Added	Rs In Lakhs	14546105	52776558	262.82

Above table shows the variation of principal characteristics of major industrial activities for the last 10 years at all India level. On comparison, the number of workers in the industrial sector increased by 37.9%. At the same time the wages to workers increased from Rs 2482648 Lakhs to 5977184 Lakhs, ie 140.76 % increase. The increase of Total input is 336.28%, while the increase of Total output is only 317.57%. The increase in Depreciation is 195.57%. In the case of number of registered factories only 17.93% increase is there, for the last 10 years. Fixed capital, Invested capital, Net value added also shows increased variation for the last 10 years.

Table -4.10**Principal Characteristics Of Major Industrial Activities For The Last 10 Years (Kerala) 1998-99 To 2008-09.**

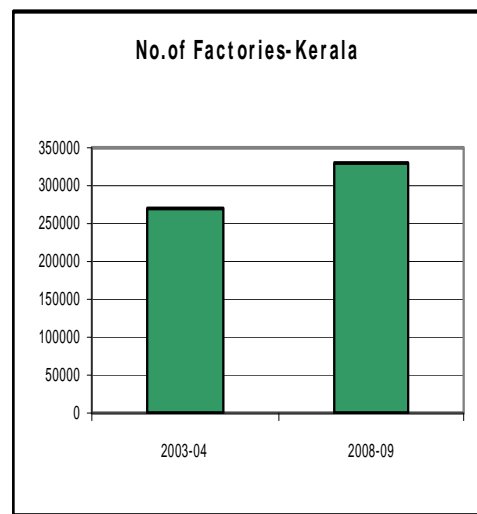
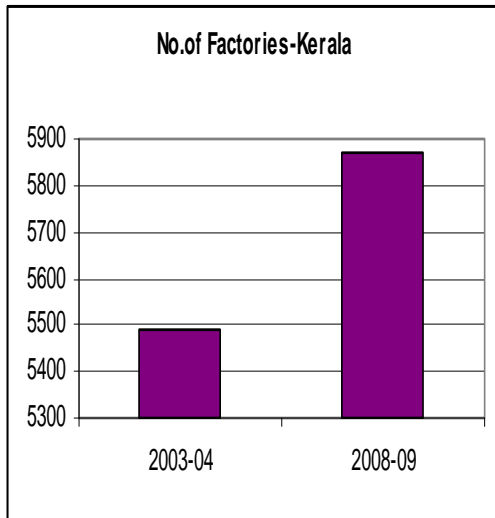
SI No	Factors	Unit	1998-99	2008-2009	% of increase
1	No Of Factories	Numbers	4703	5868	24.77
2	Fixed Capital	Rs In Lakhs	603159	1189335	97.18
3	Invested Capital	Rs In Lakhs	957654	1928079	101.33
4	No Of Workers	Numbers	231730	331043	42.86
5	Total Persons Engaged	Numbers	284860	381558	33.95
6	Wages To Workers	Rs In Lakhs	78115	157616	101.77
7	Total Inputs	Rs In Lakhs	1625364	6208382	281.97
8	Total Outputs	Rs In Lakhs	2089088	7090489	239.41
9	Depreciation	Rs In Lakhs	51886	111595	115.08
10	Net Value Added	Rs In Lakhs	411838	770511	87.09

Above table shows the variation of principal characteristics of major industrial activities for the last 10 years in Kerala. On comparison, the number of workers in the industrial sector increased by 42.86 %. The number of Total persons engaged also increased by 33.95%. At the same time the wages to workers increased from Rs 78115 Lakhs to Rs 157616 Lakhs, ie 101.77 %. The increase of Total input is 281.97 %, while the increase of Total output is only 239.41 %. The increase in Depreciation is 115.08%. In the case of number of registered factories only 24.77 % increase is there, for the last 10 years. Fixed capital, Invested capital, Net value added also shows increased variation for the last 10 years.

Table -4.11

Principal Characteristics Of Major Industrial Activities For The Last 5 Years (Kerala) 2003-2004 and 2008-09(source ;internet)

SI No	Factors	Unit	2003-2004	2008- 2009	% of increase
1	No Of Factories	Numbers	5491	5868	6.87
2	Fixed Capital	Rs In Lakhs	692953	1189335	71.63
3	Invested Capital	Rs In Lakhs	1111852	1928079	73.41
4	No Of Workers	Numbers	272433	331043	21.51
5	Total Persons Engaged	Numbers	316611	381558	20.51
6	Wages To Workers	Rs In Lakhs	95959	157616	64.25
7	Total Inputs	Rs In Lakhs	2705788	6208382	129.45
8	Total Outputs	Rs In Lakhs	3183189	7090489	122.75
9	Depreciation	Rs In Lakhs	68287	111595	63.42
10	Net Value Added	Rs In Lakhs	409114	770511	88.34



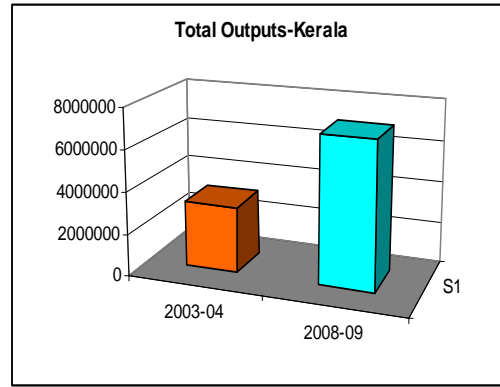
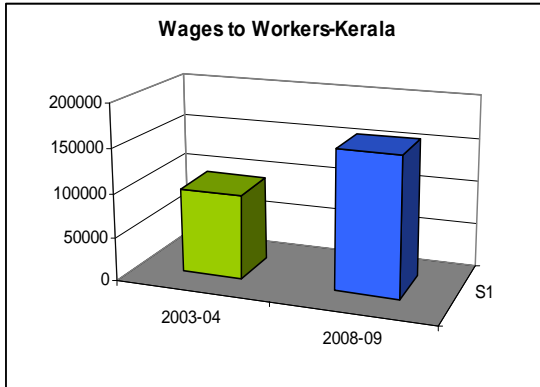


Table -4.12

**Principal Characteristics Of Major Industrial Activities For The Last 5 Years
(All India) 2003-2004 and 2008-09**

Sl No	Factors	Unit	2003- 2004	2008- 2009	% of increase
1	No Of Factories	Numbers	129074	155321	20.33
2	Fixed Capital	Rs In Lakhs	47333140	105596614	123.09
3	Invested Capital	Rs In Lakhs	67959786	153517773	125.90
4	No Of Workers	Numbers	6086908	8776745	44.19
5	Total Persons Engaged	Numbers	7870081	11327485	43.93
6	Wages To Workers	Rs In Lakhs	3047777	5977184	96.12
7	Total Inputs	Rs In Lakhs	103962329	266148638	156.00
8	Total Outputs	Rs In Lakhs	128740055	327279786	154.22
9	Depreciation	Rs In Lakhs	4482349	8354590	86.39
10	Net Value Added	Rs In Lakhs	20295377	52776558	160.04

Regarding the above two tables the variation of principal characteristics of major industrial activities for the last 5 years of Kerala and India are reflected. While taking into consideration of the number of factories in Kerala, it increased by 6.87 % only for the last five years from 2003-2004 to 2008 -2009. But the number of workers increased by 21.51 % . Wages increased by 64.25 % . Total input increased by 129.45 % , where as total output increase is 122.75 % .

When all India figures are taken in to consideration regarding the above characteristics number of factories increased by 20.33 % , while in Kerala the increase is only 6.87 % . Number of workers amounted 21.51 % increase while in India it is 44.19 % . Wages to workers increased by 96.12 % , whereas Kerala shows an increase of 64.25 % . In the case of Total inputs Kerala shows a figure of 129.45%, while India shows a figure of 156 % increase. Total output shows 154.22 % increase in all India level where as Kerala shows only 122.75 % .

ANNEXURE-1

NATIONAL INDUSTRIAL CLASSIFICATION -2008

NIC 3 Digit	NIC 4 Digit	Description
016	0163	Post-harvest crop activities
089	0893	Extraction of salt
101	1010	Processing and preserving of meat
102	1020	Processing and preserving of fish, crustaceans and molluscs and products thereof
103	1030	Processing and preserving of fruit and vegetables
104	1040	Manufacture of vegetable and animal oils and fats
105	1050	Manufacture of dairy products
106		Manufacture of grain mill products, starches and starch products
	1061	Manufacture of grain mill products
	1062	Manufacture of starches and starch products
107		Manufacture of other food products
	1071	Manufacture of bakery products
	1072	Manufacture of sugar
	1073	Manufacture of cocoa, chocolate and sugar confectionery
	1074	Manufacture of macaroni, noodles, couscous and similar farinaceous products
	1075	Manufacture of prepared meals and dishes
	1079	Manufacture of other food products n.e.c.
108	1080	Manufacture of prepared animal feeds
110		Manufacture of beverages
	1101	Distilling, rectifying and blending of spirits; ethyl alcohol production from fermented materials
	1102	Manufacture of wines
	1103	Manufacture of malt liquors and malt
	1104	Manufacture of soft drinks; production of mineral waters and other bottled waters
120	1200	Manufacture of tobacco products

131		Spinning, weaving and finishing of textiles
	1311	Preparation and spinning of textile fibres
	1312	Weaving of textiles
	1313	Finishing of textiles
139		Manufacture of other textiles
	1391	Manufacture of knitted and crocheted fabrics
	1392	Manufacture of made-up textile articles, except apparel
	1393	Manufacture of carpets and rugs
	1394	Manufacture of cordage, rope, twine and netting
	1399	Manufacture of other textiles n.e.c.
141	1410	Manufacture of wearing apparel, except fur apparel
142	1420	Manufacture of articles of fur
143	1430	Manufacture of knitted and crocheted apparel
151		Tanning and dressing of leather; manufacture of luggage, handbags, saddlery and harness; dressing and dyeing of fur
	1511	Tanning and dressing of leather; dressing and dyeing of fur
	1512	Manufacture of luggage, handbags and the like, saddlery and harness
152	1520	Manufacture of footwear
161	1610	Saw milling and planing of wood
162		Manufacture of products of wood, cork, straw and plaiting materials
	1621	Manufacture of veneer sheets; manufacture of plywood, laminboard, particle board and other panels and board
	1622	Manufacture of builders' carpentry and joinery
	1623	Manufacture of wooden containers
	1629	Manufacture of other products of wood; manufacture of articles of cork, straw and plaiting materials
170		Manufacture of paper and paper products
	1701	Manufacture of pulp, paper and paperboard
	1702	Manufacture of corrugated paper and paperboard and containers of paper and paperboard
	1709	Manufacture of other articles of paper and paperboard

181		Printing and service activities related to printing
	1811	Printing
	1812	Service activities related to printing
182	1820	Reproduction of recorded media
191	1910	Manufacture of coke oven products
192	1920	Manufacture of refined petroleum products
201		Manufacture of basic chemicals, fertilizer and nitrogen compounds, plastics and synthetic rubber in primary forms
	2011	Manufacture of basic chemicals
	2012	Manufacture of fertilizers and nitrogen compounds
	2013	Manufacture of plastics and synthetic rubber in primary forms
202		Manufacture of other chemical products
	2021	Manufacture of pesticides and other agrochemical products
	2022	Manufacture of paints, varnishes and similar coatings, printing ink and mastics
	2023	Manufacture of soap and detergents, cleaning and polishing preparations, perfumes and toilet preparations
	2029	Manufacture of other chemical products n.e.c.
203	2030	Manufacture of man-made fibres
210	2100	Manufacture of pharmaceuticals, medicinal chemical and botanical products
221		Manufacture of rubber products
	2211	Manufacture of rubber tyres and tubes; retreading and rebuilding of rubber tyres
	2219	Manufacture of other rubber products
222	2220	Manufacture of plastics products
231	2310	Manufacture of glass and glass products
239		Manufacture of non-metallic mineral products n.e.c.
	2391	Manufacture of refractory products
	2392	Manufacture of clay building materials
	2393	Manufacture of other porcelain and ceramic products
	2394	Manufacture of cement, lime and plaster

	2395	Manufacture of articles of concrete, cement and plaster
	2396	Cutting, shaping and finishing of stone
	2399	Manufacture of other non-metallic mineral products n.e.c.
241	2410	Manufacture of basic iron and steel
242	2420	Manufacture of basic precious and other non-ferrous metals
243		Casting of metals
	2431	Casting of iron and steel
	2432	Casting of non-ferrous metals
251		Manufacture of structural metal products, tanks, reservoirs and steam generators
	2511	Manufacture of structural metal products
	2512	Manufacture of tanks, reservoirs and containers of metal
	2513	Manufacture of steam generators, except central heating hot water boilers
252	2520	Manufacture of weapons and ammunition
259		Manufacture of other fabricated metal products; metalworking service activities
281		Manufacture of general purpose machinery
	2811	Manufacture of engines and turbines, except aircraft, vehicle and cycle engines
	2812	Manufacture of fluid power equipment
	2813	Manufacture of other pumps, compressors, taps and valves
	2814	Manufacture of bearings, gears, gearing and driving elements
	2815	Manufacture of ovens, furnaces and furnace burners
	2816	Manufacture of lifting and handling equipment
	2817	Manufacture of office machinery and equipment
	2818	Manufacture of power-driven hand tools
	2819	Manufacture of other general-purpose machinery
282		Manufacture of special-purpose machinery
	2821	Manufacture of agricultural and forestry machinery
	2822	Manufacture of metal-forming machinery and machine tools
	2823	Manufacture of machinery for metallurgy

	2824	Manufacture of machinery for mining, quarrying and construction
	2825	Manufacture of machinery for food, beverage and tobacco processing
	2826	Manufacture of machinery for textile, apparel and leather production
	2829	Manufacture of other special-purpose machinery
291	2910	Manufacture of motor vehicles
292	2920	Manufacture of bodies (coachwork) for motor vehicles; manufacture of trailers and semi-trailers
293	2930	Manufacture of parts and accessories for motor vehicles
301		Building of ships and boats
	3011	Building of ships and floating structures
	3012	Building of pleasure and sporting boats
302	3020	Manufacture of railway locomotives and rolling stock
303	3030	Manufacture of air and spacecraft and related machinery
304	3040	Manufacture of weapons and ammunition
309		Manufacture of transport equipment n.e.c.
	3091	Manufacture of motorcycles
	3092	Manufacture of bicycles and invalid carriages
	3099	Manufacture of other transport equipment n.e.c.
310	3100	Manufacture of furniture
321		Manufacture of jewellery, bijouterie and related articles
	3211	Manufacture of jewellery and related articles
	3212	Manufacture of imitation jewellery and related articles
322	3220	Manufacture of musical instruments
323	3230	Manufacture of sports goods
324	3240	Manufacture of games and toys
325	3250	Manufacture of medical and dental instruments and supplies
329	3290	Other manufacturing n.e.c.
331		Repair of fabricated metal products, machinery and equipment
	3311	Repair of fabricated metal products
	3312	Repair of machinery
	3313	Repair of electronic and optical equipment

	3314	Repair of electrical equipment
	3315	Repair of transport equipment, except motor vehicles
	3319	Repair of other equipment
332	3320	Installation of industrial machinery and equipment
351	3510	Electric power generation, transmission and distribution
352	3520	Manufacture of gas; distribution of gaseous fuels through mains
353	3530	Steam and air conditioning supply
360	3600	Water collection, treatment and supply
370	3700	Sewerage
381		Waste collection
	3811	Collection of non-hazardous waste
	3812	Collection of hazardous waste
382		Waste treatment and disposal
	3821	Treatment and disposal of non-hazardous waste
	3822	Treatment and disposal of hazardous waste
383	3830	Materials recovery
452	4520	Maintenance and repair of motor vehicles
454	4540	Sale, maintenance and repair of motorcycles and related parts and Accessories
521	5210	Warehousing and storage
581		Publishing of books, periodicals and other publishing activities
	5811	Book publishing
	5812	Publishing of directories and mailing lists
	5813	Publishing of newspapers, journals and periodicals
	5819	Other publishing activities
591		Motion picture, video and television programme activities
	5911	Motion picture, video and television programme production activities
	5912	Motion picture, video and television programme post-production activities
	5913	Motion picture, video and television programme distribution activities
592	5920	Sound recording and music publishing activities

742	7420	Photographic activities
829		Business support service activities n.e.c.
	8292	Packaging activities
951		Repair of computers and communication equipment
	9511	Repair of computers and peripheral equipment
	9512	Repair of communication equipment
952		Repair of personal and household goods
	9521	Repair of consumer electronics
	9522	Repair of household appliances and home and garden equipment
	9523	Repair of footwear and leather goods
	9524	Repair of furniture and home furnishings
	9529	Repair of personal and household goods, n.e.c.
960		Other personal service activities
	9601	Washing and (dry-) cleaning of textile and fur products

ANNEXURE-II
ASI DATA -KERALA

Table -1
Estimate of selected characteristics of factory sector by 3-digit industry class
(NIC-2008)

SI No	Characteristics	All	016	102	103	104	105
1	Number Of Factories	5867	7	114	35	35	56
2	Factories In Operation	5364	1	100	35	27	56
3	Fixed Capital	1189335	75	19683	1536	9757	14217
4	Physical Working Capital	738744	12	13718	745	8006	2536
5	Working Capital	272472	28	-18441	786	3644	-3977
6	Invested Capital	1928079	87	33402	2281	17763	16753
7	Gross Value Of Addition To Fixed Capital	284615	0	3999	211	4424	1848
8	Rent Paid For Fixed Assets	11756	0	441	2	76	58
9	Outstanding Loan	742539	0	16869	221	7024	6615
10	Interest Paid	84225	0	8537	79	1114	385
11	Rent Received For Fixed Assets	1934	0	261	2	30	0
12	Interest Received	5416	0	23	1	17	29
13	Gross Value Of Plant & Machinery	1107825	91	12157	308	3669	3997
14	Value Of Product And By-Product	6456514	59	123283	3567	88752	65053
15	Total Output	7090489	61	146414	4074	92747	67461
16	Fuels Consumed	329017	3	5971	108	1611	2482
17	Materials Consumed	5191406	60	117322	2665	79061	50105
18	Total Inputs	6208382	70	133782	4064	89569	59232
19	Gross Value Added	882107	-9	12632	10	3178	8229
20	Depreciation	111595	13	2205	120	1473	1715
21	Net Value Added	770511	-22	10426	-110	1705	6513
22	Net Fixed Capital Formation	140754	-13	762	37	2917	-1036
23	Gross Fixed Capital Formation	252350	0	2968	157	4391	680
24	Addition in Stock of	-105543	-19	-2653	-49	1869	956
	(a) Materials, Fuels etc.	-106930	-12	226	46	1268	148
	(b) Semi Finished Goods	13869	0	-8	-1	787	0
	(c) Finished Goods	-12482	-7	-2871	-94	-186	808
25	Gross Capital Formation	146806	-19	316	108	6260	1635
26	Income	674531	-22	1448	-191	514	6070
27	Profit	348364	-34	-2181	-662	-1144	2596

Table -1 (contd.)

Sl No	Characteristics	106	107	108	110	120	131
1	Number Of Factories	148	777	18	41	799	162
2	Factories In Operation	132	692	16	36	787	124
3	Fixed Capital	26334	49856	4632	30023	316	94647
4	Physical Working Capital	22385	94045	2616	8415	120	26647
5	Working Capital	10170	48985	-2300	13738	598	5711
6	Invested Capital	48719	143901	7249	38437	436	121294
7	Gross Value Of Addition To Fixed Capital	3105	8416	653	2949	10	44367
8	Rent Paid For Fixed Assets	46	1083	38	173	50	76
9	Outstanding Loan	13567	66362	1705	8741	41	91350
10	Interest Paid	2127	8323	523	694	20	7723
11	Rent Received For Fixed Assets	167	291	1	30	0	4
12	Interest Received	135	139	34	21	0	124
13	Gross Value Of Plant & Machinery	6799	17203	5624	9874	0	100970
14	Value Of Product And By-Product	133132	498553	33653	48934	5488	53992
15	Total Output	171540	564121	39339	60199	16801	60739
16	Fuels Consumed	4785	5089	1085	1064	104	6874
17	Materials Consumed	125392	380888	24911	37094	2209	44628
18	Total Inputs	164246	469227	30898	52869	6740	58373
19	Gross Value Added	7294	94894	8441	7330	10061	2366
20	Depreciation	2696	4738	646	3280	20	9319
21	Net Value Added	4597	90156	7795	4051	10041	-6953
22	Net Fixed Capital Formation	454	2135	-200	-598	-13	33209
23	Gross Fixed Capital Formation	3151	6873	446	2682	8	42528
24	Addition in Stock of	3865	2874	622	-2072	-32	945
	(a) Materials, Fuels etc.	4654	-503	636	-2139	-40	1271
	(b) Semi Finished Goods	-401	3337	-1	-38	0	-225
	(c) Finished Goods	-388	40	-13	105	8	-101
25	Gross Capital Formation	7016	9747	1067	611	-24	43473
26	Income	2425	80749	7234	3184	9970	-14752
27	Profit	573	31227	5850	-563	860	-25280

Table -1 (contd.)

SI No	Characteristics	139	141	143	151	152	161	162
1	Number Of Factories	170	24	20	5	85	216	321
2	Factories In Operation	170	24	20	5	85	181	308
3	Fixed Capital	38496	15404	55	394	7023	820	14120
4	Physical Working Capital	17035	2917	222	1499	3398	737	9762
5	Working Capital	-12446	2030	230	389	1633	698	4739
6	Invested Capital	55531	18321	277	1893	10422	1558	23882
7	Gross Value Of Addition To Fixed Capital	10201	3299	0	28	1606	85	2427
8	Rent Paid For Fixed Assets	410	152	0	34	32	57	197
9	Outstanding Loan	34935	8687	53	403	2329	468	10873
10	Interest Paid	7344	1357	0	121	497	138	1816
11	Rent Received For Fixed Assets	15	0	0	0	0	0	106
12	Interest Received	125	43	0	0	23	1	90
13	Gross Value Of Plant & Machinery	20246	9101	0	280	5964	576	10823
14	Value Of Product And By-Product	60932	22816	555	4601	34533	8003	72104
15	Total Output	69936	26439	663	4694	35927	8886	76683
16	Fuels Consumed	1717	706	7	53	2068	262	2412
17	Materials Consumed	54891	14545	398	2845	23059	5920	54591
18	Total Inputs	70857	17176	548	3667	28497	7199	65638
19	Gross Value Added	-921	9263	115	1027	7430	1687	11045
20	Depreciation	3308	971	8	50	1540	93	1676
21	Net Value Added	-4230	8291	107	977	5890	1594	9369
22	Net Fixed Capital Formation	2533	1049	-7	-25	42	-11	316
23	Gross Fixed Capital Formation	5842	2021	0	25	1582	82	1992
24	Addition in Stock of	-14184	882	68	232	963	143	-1776
	(a) Materials, Fuels etc.	-4074	729	77	-36	424	75	-1565
	(b) Semi Finished Goods	-5401	-2	0	35	288	-10	125
	(c) Finished Goods	-4709	155	-9	233	251	78	-336
25	Gross Capital Formation	-8342	2903	68	257	2545	226	215
26	Income	-11984	6782	106	822	5361	1399	7356
27	Profit	-18617	829	68	402	3633	245	1161

Table -1 (contd.)

Sl No	Characteristics	170	181	192	201	202	210	221
1	Number Of Factories	116	117	21	70	118	124	280
2	Factories In Operation	115	111	21	70	117	100	266
3	Fixed Capital	28488	8272	310443	90979	24845	23883	55816
4	Physical Working Capital	17381	6229	154906	33523	26946	11290	32223
5	Working Capital	8263	5995	51567	-41200	38388	6441	8207
6	Invested Capital	45868	14502	465349	124502	51792	35173	88039
7	Gross Value Of Addition To Fixed Capital	2983	624	86284	10004	7392	3536	14946
8	Rent Paid For Fixed Assets	182	416	1012	319	152	805	284
9	Outstanding Loan	5583	21125	8507	31643	7217	26426	27891
10	Interest Paid	1458	1436	931	4979	2132	2348	3968
11	Rent Received For Fixed Assets	66	36	0	220	56	20	45
12	Interest Received	142	151	407	1114	42	121	495
13	Gross Value Of Plant & Machinery	51176	7529	250705	164885	28255	11110	70660
14	Value Of Product And By-Product	85599	17545	2753958	336947	117514	48073	500122
15	Total Output	86404	40292	2765979	341243	128565	50953	538541
16	Fuels Consumed	11467	609	111264	33869	4477	2922	18472
17	Materials Consumed	47745	15600	2450287	260705	67014	27383	374509
18	Total Inputs	63863	22138	2580966	307660	91904	35913	430441
19	Gross Value Added	22541	18154	185013	33583	36661	15040	108100
20	Depreciation	2682	803	19084	8602	2507	2661	7138
21	Net Value Added	19860	17351	165929	24980	34154	12379	100962
22	Net Fixed Capital Formation	216	-261	65868	-3507	3792	444	5506
23	Gross Fixed Capital Formation	2898	542	84952	5095	6299	3104	12644
24	Addition in Stock of	7491	2302	-137390	-13512	1593	1451	-1499
	(a) Materials, Fuels etc.	2871	2268	-142000	-14287	-283	586	889
	(b) Semi Finished Goods	19	-6	5236	-190	548	603	641
	(c) Finished Goods	4601	40	-626	965	1328	262	-3029
25	Gross Capital Formation	10389	2844	-52437	-8418	7893	4555	11145
26	Income	18220	15500	163986	19682	31869	9226	96711
27	Profit	8332	10430	140574	-5784	21867	1430	72889

Table -1 (contd.)

SI No	Characteristics	222	231	239	241	242	243
1	Number Of Factories	170	7	867	68	23	30
2	Factories In Operation	170	4	732	68	23	30
3	Fixed Capital	14037	3551	60401	59747	15073	6389
4	Physical Working Capital	7598	1270	16432	75592	8495	6401
5	Working Capital	7856	691	12438	32960	3902	-4866
6	Invested Capital	21635	4821	76833	135339	23569	12790
7	Gross Value Of Addition To Fixed Capital	2111	125	14135	11499	2545	1197
8	Rent Paid For Fixed Assets	901	5	1156	33	24	19
9	Outstanding Loan	9950	2845	21936	98509	3820	7797
10	Interest Paid	1618	551	1554	6768	940	943
11	Rent Received For Fixed Assets	8	0	35	0	3	8
12	Interest Received	31	0	363	994	23	16
13	Gross Value Of Plant & Machinery	7181	5237	40810	49153	26637	5088
14	Value Of Product And By-Product	62422	7093	110660	570584	53026	33460
15	Total Output	64768	7096	113463	583786	54068	33837
16	Fuels Consumed	3240	2623	21176	55105	9017	6746
17	Materials Consumed	40724	3203	47969	473956	33445	22181
18	Total Inputs	50560	6181	79891	552660	46616	31502
19	Gross Value Added	14208	915	33572	31126	7452	2335
20	Depreciation	2062	285	5389	5148	1363	795
21	Net Value Added	12145	631	28183	25978	6090	1539
22	Net Fixed Capital Formation	-269	-196	5292	5991	762	-323
23	Gross Fixed Capital Formation	1793	89	10681	11139	2124	473
24	Addition in Stock of	107	-396	3022	2089	-123	-390
	(a) Materials, Fuels etc.	300	-35	2142	13560	340	-474
	(b) Semi Finished Goods	-87	13	-40	-28	-538	-54
	(c) Finished Goods	-106	-374	920	-11443	75	138
25	Gross Capital Formation	1900	-307	13703	13229	2001	83
26	Income	9626	76	25473	19177	5125	577
27	Profit	5280	-693	8939	12344	1893	-1316

Table -1 (contd.)

Sl No	Characteristics	251	259	261	263	264	267
1	Number Of Factories	51	91	19	3	5	8
2	Factories In Operation	39	79	19	3	1	2
3	Fixed Capital	633	3436	27566	952	93	405
4	Physical Working Capital	413	1915	16764	1433	21	3054
5	Working Capital	-2036	1812	22157	2394	-62	8741
6	Invested Capital	1046	5352	44330	2385	115	3459
7	Gross Value Of Addition To Fixed Capital	99	794	4382	119	59	66
8	Rent Paid For Fixed Assets	14	204	293	4	0	0
9	Outstanding Loan	616	922	124863	17636	0	592
10	Interest Paid	19	111	4494	71	0	77
11	Rent Received For Fixed Assets	0	6	257	0	0	1
12	Interest Received	3	0	284	15	0	2
13	Gross Value Of Plant & Machinery	140	4925	32428	599	91	1159
14	Value Of Product And By-Product	1503	11697	81451	4705	0	14803
15	Total Output	3467	14033	92535	6584	11	14881
16	Fuels Consumed	106	943	1559	270	1	75
17	Materials Consumed	1717	7246	54522	2585	6	8397
18	Total Inputs	2597	11645	66828	5033	16	9225
19	Gross Value Added	870	2388	25707	1551	-5	5656
20	Depreciation	51	365	2351	75	5	37
21	Net Value Added	818	2023	23357	1476	-10	5619
22	Net Fixed Capital Formation	36	389	1472	624	54	29
23	Gross Fixed Capital Formation	87	754	3823	699	59	66
24	Addition in Stock of	129	9	-657	64	5	177
	(a) Materials, Fuels etc.	16	89	418	56	5	219
	(b) Semi Finished Goods	98	-161	-708	12	0	45
	(c) Finished Goods	15	81	-367	-4	0	-87
25	Gross Capital Formation	217	763	3166	764	63	243
26	Income	786	1708	18570	1401	-10	5542
27	Profit	-223	-543	9462	182	-69	4334

Table -1 (contd.)

Sl No	Characteristics	271	272	273	274	279	281
1	Number Of Factories	29	6	6	17	17	38
2	Factories In Operation	29	0	6	15	17	37
3	Fixed Capital	1686	91	785	794	9966	8654
4	Physical Working Capital	7071	0	821	596	4831	8747
5	Working Capital	11979	188	728	392	7218	3852
6	Invested Capital	8757	91	1606	1388	14797	17401
7	Gross Value Of Addition To Fixed Capital	717	0	266	154	3261	2437
8	Rent Paid For Fixed Assets	39	0	4	3	282	190
9	Outstanding Loan	1339	28	2180	565	0	9164
10	Interest Paid	222	0	452	33	173	946
11	Rent Received For Fixed Assets	1	58	0	2	0	0
12	Interest Received	177	0	0	0	4	38
13	Gross Value Of Plant & Machinery	2747	421	5002	314	5030	14305
14	Value Of Product And By-Product	40487	0	5613	2653	10924	27428
15	Total Output	41202	0	5656	3763	17076	27629
16	Fuels Consumed	541	0	120	39	283	628
17	Materials Consumed	24888	0	3969	1807	3161	15719
18	Total Inputs	27475	0	4309	3185	7609	18846
19	Gross Value Added	13727	0	1347	578	9467	8783
20	Depreciation	260	9	100	87	1065	1184
21	Net Value Added	13467	-9	1246	491	8402	7599
22	Net Fixed Capital Formation	439	-9	166	62	2195	1460
23	Gross Fixed Capital Formation	699	0	266	148	3260	2643
24	Addition in Stock of	1440	0	-699	68	2695	6159
	(a) Materials, Fuels etc.	545	0	-58	-27	1368	6060
	(b) Semi Finished Goods	276	0	-1	21	60	16
	(c) Finished Goods	619	0	-640	74	1267	83
25	Gross Capital Formation	2139	0	-433	216	5955	8802
26	Income	13206	-9	790	455	7947	6463
27	Profit	7312	-9	-17	117	5147	1189

Table -1 (contd.)

SI No	Characteristics	282	292	293	301	309	310
1	Number Of Factories	32	11	8	8	4	84
2	Factories In Operation	31	11	8	8	4	73
3	Fixed Capital	5690	230	58	17245	1498	3222
4	Physical Working Capital	7171	194	47	45453	1214	744
5	Working Capital	6335	57	30	-10329	2379	-3758
6	Invested Capital	12861	424	105	62699	2712	3966
7	Gross Value Of Addition To Fixed Capital	1187	4	0	6685	232	604
8	Rent Paid For Fixed Assets	94	32	0	79	7	21
9	Outstanding Loan	2967	25	0	1759	10421	3353
10	Interest Paid	519	20	9	1953	69	827
11	Rent Received For Fixed Assets	1	0	0	180	0	0
12	Interest Received	40	0	0	43	0	0
13	Gross Value Of Plant & Machinery	7258	77	0	14202	4475	1586
14	Value Of Product And By-Product	31671	652	112	112209	1635	10269
15	Total Output	33442	1091	275	142110	3433	10688
16	Fuels Consumed	790	27	3	1640	236	413
17	Materials Consumed	21402	378	32	44160	1292	7637
18	Total Inputs	24569	778	211	90896	2124	9028
19	Gross Value Added	8873	313	64	51214	1309	1660
20	Depreciation	703	19	6	875	175	416
21	Net Value Added	8171	295	57	50339	1135	1244
22	Net Fixed Capital Formation	223	-15	-6	5662	52	183
23	Gross Fixed Capital Formation	926	4	0	6537	228	599
24	Addition in Stock of	1411	-53	14	23552	-470	2
	(a) Materials, Fuels etc.	466	89	8	14151	-51	-146
	(b) Semi Finished Goods	22	-142	4	9386	-402	33
	(c) Finished Goods	923	0	2	15	-17	115
25	Gross Capital Formation	2337	-49	14	30090	-242	601
26	Income	7558	241	49	48307	1059	396
27	Profit	2305	88	20	31549	-278	-726

Table -1 (contd.)

SI No	Characteristics	321	325	329	331	383	581	Other
1	Number Of Factories	5	11	10	12	8	6	340
2	Factories In Operation	4	6	10	12	8	6	315
3	Fixed Capital	767	1617	127	442	1431	19744	52890
4	Physical Working Capital	253	407	183	1771	588	9938	12012
5	Working Capital	-413	908	183	3525	484	9345	19506
6	Invested Capital	1020	2023	310	2213	2019	29683	64901
7	Gross Value Of Addition To Fixed Capital	137	161	38	104	1010	4108	12981
8	Rent Paid For Fixed Assets	44	37	5	31	0	689	1451
9	Outstanding Loan	64	356	24	290	1016	9147	11718
10	Interest Paid	151	45	4	69	36	1734	1763
11	Rent Received For Fixed Assets	7	1	0	0	0	12	2
12	Interest Received	0	0	1	0	0	37	69
13	Gross Value Of Plant & Machinery	695	822	193	348	1147	23440	60312
14	Value Of Product And By-Product	3499	9092	423	2516	924	58219	69017
15	Total Output	4020	9143	431	3963	993	59515	338828
16	Fuels Consumed	36	166	15	48	346	1206	2137
17	Materials Consumed	2940	3464	220	1810	280	31507	66963
18	Total Inputs	3434	4996	277	2712	690	41991	306960
19	Gross Value Added	586	4147	154	1251	303	17524	31868
20	Depreciation	119	194	15	31	111	3051	7899
21	Net Value Added	467	3953	139	1221	191	14473	23969
22	Net Fixed Capital Formation	7	-461	13	28	373	-2035	4946
23	Gross Fixed Capital Formation	126	-267	28	59	484	1015	12844
24	Addition in Stock of	-1126	-118	32	651	180	5025	-1417
	(a) Materials, Fuels etc.	-1126	-100	13	70	103	4942	-1106
	(b) Semi Finished Goods	0	-14	0	586	61	59	15
	(c) Finished Goods	0	-4	19	-5	16	24	-326
25	Gross Capital Formation	-1000	-384	59	710	664	6039	11428
26	Income	272	3872	131	1119	155	12050	20754
27	Profit	14	3409	60	88	9	3449	6347

Table -2
Estimate of (i) employment, (ii) mandays employed and (iii) emoluments paid in the factory sector by their type for each 3-digit industry division (NIC-2008)

SI No	Characteristics	All	016	102	103	104	105
A	No. Of Persons Engaged	381558	24	4962	1076	1554	2583
1	Workers	331043	16	3658	872	1269	1677
1.1	Directly Employed	271204	16	2921	833	907	1346
	Men	93679	12	1340	322	896	1033
	Women	177525	4	1581	511	11	313
1.2	Employed Through Contractors	59839	0	737	39	362	331
2	Employees Other Than Workers	48080	8	1274	175	285	895
2.1	Supervisory and Managerial	23487	1	575	129	164	372
2.2	Other Employees	24593	7	699	46	121	523
3	Unpaid family members/proprietor etc.	2436	0	31	28	0	11
B	Total Man days Employed (in '000)	101329	6	1531	289	473	829
C	Wages and Salaries Including						
	Employers' Contribution	326167	12	3630	470	1658	3473
1	Wages and Salary Including Bonus	269263	12	3074	433	1452	2593
1.1	Wages and Salary	248173	11	2839	415	1326	2498
1.1.1	Workers	157616	5	1433	234	844	1287
1.1.2	Supervisory & Managerial	57982	2	955	165	384	682
1.1.3	Other Employees	32575	4	451	16	98	529
1.2	Bonus to All Staff	21090	1	234	18	126	96
2	Employers' Contribution	56904	0	556	37	206	880

Table -2 (contd.)

SI No	Characteristics	106	107	108	110	120	131
A	No. Of Persons Engaged	3900	151654	1537	2643	43682	11218
1	Workers	3036	145179	1264	2111	42214	9973
1.1	Directly Employed	1756	144024	889	1402	15567	9768
	Men	1527	7929	883	823	2245	7624
	Women	229	136095	6	579	13322	2144
1.2	Employed Through Contractors	1280	1155	375	709	26647	206
2	Employees Other Than Workers	815	6148	267	522	916	1245
2.1	Supervisory and Managerial	379	3012	90	218	379	568
2.2	Other Employees	436	3136	177	304	537	677
3	Unpaid family members/proprietor etc.	49	327	6	10	552	0
B	Total Man days Employed (in '000)	927	33713	464	785	11703	3691
C	Wages and Salaries Including						
	Employers' Contribution	1853	49522	1385	3748	9110	10528
1	Wages and Salary Including Bonus	1578	44053	1112	3261	8297	8426
1.1	Wages and Salary	1484	37708	1054	3090	7256	7794
1.1.1	Workers	1056	33213	788	1872	6794	5802
1.1.2	Supervisory & Managerial	240	2762	144	868	238	1243
1.1.3	Other Employees	188	1733	122	350	224	749
1.2	Bonus to All Staff	93	6344	59	170	1042	631
2	Employers' Contribution	275	5469	273	487	813	2102

Table -2 (contd.)

SI No	Characteristics	139	141	143	151	152	161
A	No. Of Persons Engaged	10261	7603	197	505	2525	2979
1	Workers	8631	6986	139	469	2108	2523
1.1	Directly Employed	5566	6986	139	447	1694	1803
	Men	4354	1501	4	206	1523	704
	Women	1212	5485	135	241	171	1099
1.2	Employed Through Contractors	3064	0	0	22	413	720
2	Employees Other Than Workers	1573	603	39	36	401	351
2.1	Supervisory and Managerial	682	191	39	18	208	248
2.2	Other Employees	891	412	0	18	193	103
3	Unpaid family members/proprietor etc.	58	14	20	0	17	105
B	Total Man days Employed (in '000)	2974	2270	48	153	747	803
C	Wages and Salaries Including						
	Employers' Contribution	6633	5953	38	420	1728	1154
1	Wages and Salary Including Bonus	5805	4261	34	359	1470	1089
1.1	Wages and Salary	4964	4079	29	325	1331	1027
1.1.1	Workers	3424	3417	23	271	978	877
1.1.2	Supervisory & Managerial	932	386	6	39	243	113
1.1.3	Other Employees	608	276	0	15	110	37
1.2	Bonus to All Staff	841	182	5	34	139	62
2	Employers' Contribution	828	1692	4	61	258	65

Table -2 (contd.)

SI No	Characteristics	162	170	181	192	201	202
A	No. Of Persons Engaged	7624	5398	3188	5048	6905	5247
1	Workers	5824	4369	1877	3989	4868	2963
1.1	Directly Employed	4623	3611	1743	1263	4242	2651
	Men	3142	2674	1446	1256	4129	1865
	Women	1481	937	297	7	113	786
1.2	Employed Through Contractors	1201	757	135	2726	625	313
2	Employees Other Than Workers	1656	973	1278	1059	2030	2242
2.1	Supervisory and Managerial	842	641	461	687	1308	1068
2.2	Other Employees	814	332	817	372	722	1174
3	Unpaid family members/proprietor etc.	144	56	33	0	8	42
B	Total Man days Employed (in '000)	2103	1750	1026	1802	2421	1575
C	Wages and Salaries Including						
	Employers' Contribution	6195	9888	5070	23412	25467	10003
1	Wages and Salary Including Bonus	5578	8331	4411	15890	20834	8085
1.1	Wages and Salary	5186	8145	4207	15559	19760	7639
1.1.1	Workers	2701	5479	1772	7499	12358	2816
1.1.2	Supervisory & Managerial	1666	2386	1259	6077	5837	3189
1.1.3	Other Employees	819	280	1176	1983	1565	1634
1.2	Bonus to All Staff	392	186	204	330	1074	445
2	Employers' Contribution	617	1557	659	7522	4633	1918

Table -2 (contd.)

SI No	Characteristics	210	221	222	231	239	241
A	No. Of Persons Engaged	6425	18282	4117	662	16023	9136
1	Workers	4424	14679	2895	519	12867	8115
1.1	Directly Employed	3849	11647	2529	479	11821	544
	Men	2322	10041	2059	431	8166	484
	Women	1527	1606	470	48	3655	60
1.2	Employed Through Contractors	575	3032	366	40	1045	7571
2	Employees Other Than Workers	1985	3562	1151	139	2603	1011
2.1	Supervisory and Managerial	910	2128	465	91	1571	247
2.2	Other Employees	1075	1434	686	48	1032	764
3	Unpaid family members/proprietor etc.	16	40	72	3	554	10
B	Total Man days Employed (in '000)	1928	5640	1190	211	4253	2765
C	Wages and Salaries Including						
	Employers' Contribution	7795	23821	4346	769	16534	6833
1	Wages and Salary Including Bonus	6470	18851	3527	656	13838	6116
1.1	Wages and Salary	5964	17315	3133	586	12620	5876
1.1.1	Workers	2983	12275	1684	412	8383	4669
1.1.2	Supervisory & Managerial	1458	3715	893	123	2857	310
1.1.3	Other Employees	1523	1325	556	51	1380	897
1.2	Bonus to All Staff	507	1536	394	70	1217	240
2	Employers' Contribution	1325	4970	819	113	2696	717

Table -2 (contd.)

SI No	Characteristics	242	243	251	259	261	263
A	No. Of Persons Engaged	1438	1606	724	1958	3716	712
1	Workers	1131	1295	527	1606	2621	453
1.1	Directly Employed	914	883	358	1591	2436	338
	Men	869	853	358	1492	1516	166
	Women	45	30	0	99	920	172
1.2	Employed Through Contractors	217	412	169	15	185	115
2	Employees Other Than Workers	288	309	183	321	1096	259
2.1	Supervisory and Managerial	168	157	118	216	569	130
2.2	Other Employees	120	152	65	105	527	129
3	Unpaid family members/proprietor etc.	19	3	15	31	0	0
B	Total Man days Employed (in '000)	488	468	211	574	1086	208
C	Wages and Salaries Including						
	Employers' Contribution	3232	1893	1008	2252	9107	1219
1	Wages and Salary Including Bonus	2726	1609	829	1932	7159	907
1.1	Wages and Salary	2635	1524	806	1809	6663	875
1.1.1	Workers	1482	1013	514	1431	2285	515
1.1.2	Supervisory & Managerial	992	259	227	287	1637	227
1.1.3	Other Employees	161	252	65	91	2741	133
1.2	Bonus to All Staff	90	86	22	123	496	30
2	Employers' Contribution	506	284	179	320	1948	312

Table -2 (contd.)

SI No	Characteristics	264	267	271	272	273	274
A	No. Of Persons Engaged	26	615	2598	0	584	419
1	Workers	13	342	1971	0	509	329
1.1	Directly Employed	13	342	1749	0	456	312
	Men	6	275	1327	0	422	66
	Women	7	67	422	0	34	246
1.2	Employed Through Contractors	0	0	222	0	54	18
2	Employees Other Than Workers	13	271	622	0	75	86
2.1	Supervisory and Managerial	9	150	347	0	33	41
2.2	Other Employees	4	121	275	0	42	45
3	Unpaid family members/proprietor etc.	0	2	5	0	0	5
B	Total Man days Employed (in '000)	7	166	775	0	175	123
C	Wages and Salaries Including						
	Employers' Contribution	59	1207	5894	0	807	339
1	Wages and Salary Including Bonus	41	943	4446	0	639	298
1.1	Wages and Salary	38	903	4226	0	607	287
1.1.1	Workers	17	405	2919	0	484	160
1.1.2	Supervisory & Managerial	16	314	985	0	82	92
1.1.3	Other Employees	5	184	322	0	41	35
1.2	Bonus to All Staff	2	39	220	0	32	10
2	Employers' Contribution	18	264	1448	0	168	41

Table -2 (contd.)

SI No	Characteristics	274	309	310	321	325
A	No. Of Persons Engaged	419	539	1649	252	381
1	Workers	329	380	1300	201	285
1.1	Directly Employed	312	370	1291	36	285
	Men	66	361	1066	25	72
	Women	246	9	225	11	213
1.2	Employed Through Contractors	18	10	9	165	0
2	Employees Other Than Workers	86	159	322	50	96
2.1	Supervisory and Managerial	41	100	124	27	50
2.2	Other Employees	45	59	198	23	46
3	Unpaid family members/proprietor etc.	5	0	27	1	0
B	Total Man days Employed (in '000)	123	167	463	75	116
C	Wages and Salaries Including					
	Employers' Contribution	339	1337	1122	258	462
1	Wages and Salary Including Bonus	298	1077	968	236	369
1.1	Wages and Salary	287	1049	947	235	358
1.1.1	Workers	160	506	669	156	195
1.1.2	Supervisory & Managerial	92	433	153	69	118
1.1.3	Other Employees	35	110	125	10	45
1.2	Bonus to All Staff	10	29	21	0	12
2	Employers' Contribution	41	260	154	22	93

Table -2 (contd.)

SI No	Characteristics	329	331	383	581	Other
A	No. Of Persons Engaged	147	710	313	1684	13766
1	Workers	122	527	233	783	8669
1.1	Directly Employed	114	391	230	774	7819
	Men	24	318	230	774	7452
	Women	90	73	0	0	367
1.2	Employed Through Contractors	8	136	3	9	851
2	Employees Other Than Workers	25	181	80	902	5035
2.1	Supervisory and Managerial	11	121	18	532	1781
2.2	Other Employees	14	60	62	370	3254
3	Unpaid family members/proprietor etc.	0	3	0	0	63
B	Total Man days Employed (in '000)	42	211	59	585	4077
C	Wages and Salaries Including					
	Employers' Contribution	71	1031	146	8601	14409
1	Wages and Salary Including Bonus	58	809	135	7179	12510
1.1	Wages and Salary	55	790	135	6859	11589
1.1.1	Workers	34	562	45	1852	6101
1.1.2	Supervisory & Managerial	12	175	57	3951	2923
1.1.3	Other Employees	9	53	33	1056	2565
1.2	Bonus to All Staff	4	20	0	320	921
2	Employers' Contribution	13	222	11	1422	1899

Table -3
Estimate of selected characteristics of factory sector by 2-digit industry class
(NIC-2008)

SI No	Characteristics	All	01	10	11	12	13
1	Number Of Factories	5867	7	1182	41	799	332
2	Factories In Operation	5364	1	1057	36	787	294
3	Fixed Capital	1189335	75	126016	30023	316	133143
4	Physical Working Capital	738744	12	144051	8415	120	43682
5	Working Capital	272472	28	38867	13738	598	-6735
6	Invested Capital	1928079	87	270067	38437	436	176825
7	Gross Value Of Addition To Fixed Capital	284615	0	22657	2949	10	54568
8	Rent Paid For Fixed Assets	11756	0	1745	173	50	486
9	Outstanding Loan	742539	0	112363	8741	41	126285
10	Interest Paid	84225	0	21088	694	20	15067
11	Rent Received For Fixed Assets	1934	0	752	30	0	19
12	Interest Received	5416	0	377	21	0	249
13	Gross Value Of Plant & Machinery	1107825	91	49756	9874	0	121216
14	Value Of Product And By-Product	6456514	59	945992	48934	5488	114923
15	Total Output	7090489	61	1085695	60199	16801	130675
16	Fuels Consumed	329017	3	21132	1064	104	8591
17	Materials Consumed	5191406	60	780344	37094	2209	99519
18	Total Inputs	6208382	70	951018	52869	6740	129230
19	Gross Value Added	882107	-9	134677	7330	10061	1445
20	Depreciation	111595	13	13595	3280	20	12627
21	Net Value Added	770511	-22	121082	4051	10041	-11183
22	Net Fixed Capital Formation	140754	-13	5071	-598	-13	35742
23	Gross Fixed Capital Formation	252350	0	18666	2682	8	48370
24	Addition in Stock of	-105543	-19	7485	-2072	-32	-13238
	(a) Materials, Fuels etc.	-106930	-12	6476	-2139	-40	-2803
	(b) Semi Finished Goods	13869	0	3713	-38	0	-5625
	(c) Finished Goods	-12482	-7	-2704	105	8	-4810
25	Gross Capital Formation	146806	-19	26151	611	-24	35131
26	Income	674531	-22	98249	3184	9970	-26735
27	Profit	348364	-34	36259	-563	860	-43897

Table -3 (contd.)

SI No	Characteristics	14	15	16	17	18	19
1	Number Of Factories	44	90	537	116	117	21
2	Factories In Operation	44	90	489	115	111	21
3	Fixed Capital	15460	7417	14940	28488	8272	310443
4	Physical Working Capital	3138	4897	10499	17381	6229	154906
5	Working Capital	2259	2021	5437	8263	5995	51567
6	Invested Capital	18598	12315	25440	45868	14502	465349
7	Gross Value Of Addition To Fixed Capital	3299	1634	2512	2983	624	86284
8	Rent Paid For Fixed Assets	152	67	254	182	416	1012
9	Outstanding Loan	8740	2731	11341	5583	21125	8507
10	Interest Paid	1357	618	1954	1458	1436	931
11	Rent Received For Fixed Assets	0	0	106	66	36	0
12	Interest Received	43	23	91	142	151	407
13	Gross Value Of Plant & Machinery	9101	6244	11400	51176	7529	250705
14	Value Of Product And By-Product	23371	39134	80107	85599	17545	2753958
15	Total Output	27101	40621	85569	86404	40292	2765979
16	Fuels Consumed	713	2121	2673	11467	609	111264
17	Materials Consumed	14943	25904	60511	47745	15600	2450287
18	Total Inputs	17725	32165	72836	63863	22138	2580966
19	Gross Value Added	9376	8456	12733	22541	18154	185013
20	Depreciation	979	1590	1769	2682	803	19084
21	Net Value Added	8398	6867	10964	19860	17351	165928
22	Net Fixed Capital Formation	1042	18	305	216	-261	65868
23	Gross Fixed Capital Formation	2021	1607	2074	2898	542	84952
24	Addition in Stock of	950	1194	-1634	7491	2302	-137389
	(a) Materials, Fuels etc.	807	388	-1491	2871	2268	-142000
	(b) Semi Finished Goods	-3	322	115	19	-6	5237
	(c) Finished Goods	146	484	-258	4601	40	-626
25	Gross Capital Formation	2971	2803	441	10389	2844	-52438
26	Income	6888	6182	8755	18220	15500	163985
27	Profit	896	4035	1405	8332	10430	140574

Table -3 (contd.)

SI No	Characteristics	20	21	22	23	24	25
1	Number Of Factories	188	124	450	873	121	142
2	Factories In Operation	187	100	436	736	121	117
3	Fixed Capital	115824	23883	69854	63952	81209	4069
4	Physical Working Capital	60470	11290	39821	17702	90489	2328
5	Working Capital	-2812	6441	16063	13128	31996	-225
6	Invested Capital	176294	35173	109674	81654	171698	6397
7	Gross Value Of Addition To Fixed Capital	17396	3536	17057	14260	15241	893
8	Rent Paid For Fixed Assets	471	805	1184	1161	76	217
9	Outstanding Loan	38860	26426	37841	24781	110126	1538
10	Interest Paid	7111	2348	5586	2105	8651	130
11	Rent Received For Fixed Assets	276	20	53	36	11	6
12	Interest Received	1156	121	526	363	1032	3
13	Gross Value Of Plant & Machinery	193140	11110	77841	46047	80878	5065
14	Value Of Product And By-Product	454461	48073	562544	117753	657069	13200
15	Total Output	469808	50953	603309	120560	671691	17500
16	Fuels Consumed	38346	2922	21712	23800	70867	1049
17	Materials Consumed	327718	27383	415233	51172	529582	8963
18	Total Inputs	399565	35913	481002	86072	630778	14242
19	Gross Value Added	70243	15040	122307	34488	40913	3258
20	Depreciation	11110	2661	9200	5674	7306	417
21	Net Value Added	59134	12379	113107	28814	33607	2842
22	Net Fixed Capital Formation	285	444	5237	5096	6430	425
23	Gross Fixed Capital Formation	11394	3104	14437	10770	13736	841
24	Addition in Stock of	-11919	1451	-1392	2627	1576	137
	(a) Materials, Fuels etc.	-14570	586	1189	2108	13426	105
	(b) Semi Finished Goods	358	603	554	-27	-620	-64
	(c) Finished Goods	2293	262	-3135	546	-11230	96
25	Gross Capital Formation	-525	4555	13045	13396	15312	979
26	Income	51552	9226	106337	25549	24880	2494
27	Profit	16083	1430	78169	8246	12922	-766

Table -3 (contd.)

SI No	Characteristics	26	27	28	29	30	31
1	Number Of Factories	35	75	70	18	12	84
2	Factories In Operation	25	67	68	18	12	73
3	Fixed Capital	29016	13320	14345	288	18743	3222
4	Physical Working Capital	21272	13320	15918	242	46667	744
5	Working Capital	33230	20504	10187	87	-7950	-3758
6	Invested Capital	50288	26640	30262	530	65411	3966
7	Gross Value Of Addition To Fixed Capital	4625	4398	3624	4	6917	604
8	Rent Paid For Fixed Assets	298	328	284	32	86	21
9	Outstanding Loan	143092	4112	12132	25	12181	3353
10	Interest Paid	4642	880	1465	29	2022	827
11	Rent Received For Fixed Assets	259	61	1	0	180	0
12	Interest Received	300	181	78	0	43	0
13	Gross Value Of Plant & Machinery	34278	13512	21563	77	18677	1586
14	Value Of Product And By-Product	100960	59677	59099	765	113844	10269
15	Total Output	114011	67697	61071	1366	145544	10688
16	Fuels Consumed	1905	983	1418	30	1876	413
17	Materials Consumed	65510	33825	37121	411	45452	7637
18	Total Inputs	81101	42579	43415	989	93020	9028
19	Gross Value Added	32910	25118	17656	377	52524	1660
20	Depreciation	2468	1521	1887	25	1050	416
21	Net Value Added	30442	23597	15770	351	51474	1244
22	Net Fixed Capital Formation	2178	2852	1683	-21	5715	183
23	Gross Fixed Capital Formation	4646	4373	3570	4	6765	599
24	Addition in Stock of	-411	3506	7570	-39	23084	2
	(a) Materials, Fuels etc.	698	1828	6526	97	14101	-146
	(b) Semi Finished Goods	-651	357	38	-138	8985	33
	(c) Finished Goods	-458	1321	1006	2	-2	115
25	Gross Capital Formation	4235	7878	11139	-35	29848	601
26	Income	25502	22389	14021	290	49366	396
27	Profit	13909	12550	3494	108	31271	-726

Table -3 (contd.)

SI No	Characteristics	32	33	38	58	Others
1	Number Of Factories	26	12	8	6	340
2	Factories In Operation	20	12	8	6	315
3	Fixed Capital	2510	442	1431	19744	52890
4	Physical Working Capital	842	1771	588	9938	12012
5	Working Capital	678	3525	484	9345	19507
6	Invested Capital	3353	2213	2019	29683	64901
7	Gross Value Of Addition To Fixed Capital	337	104	1010	4108	12981
8	Rent Paid For Fixed Assets	85	32	0	689	1452
9	Outstanding Loan	444	290	1016	9147	11718
10	Interest Paid	199	70	36	1734	1763
11	Rent Received For Fixed Assets	8	0	0	12	2
12	Interest Received	1	1	0	37	69
13	Gross Value Of Plant & Machinery	1711	349	1147	23440	60312
14	Value Of Product And By-Product	13013	2517	924	58219	69017
15	Total Output	13595	3963	993	59515	338828
16	Fuels Consumed	218	48	346	1206	2137
17	Materials Consumed	6624	1810	280	31507	66963
18	Total Inputs	8707	2712	690	41991	306960
19	Gross Value Added	4888	1251	303	17524	31868
20	Depreciation	328	31	111	3051	7899
21	Net Value Added	4559	1221	191	14473	23969
22	Net Fixed Capital Formation	-442	28	373	-2035	4946
23	Gross Fixed Capital Formation	-114	59	484	1015	12845
24	Addition in Stock of	-1211	651	180	5025	-1416
	(a) Materials, Fuels etc.	-1212	70	103	4942	-1105
	(b) Semi Finished Goods	-14	586	61	59	15
	(c) Finished Goods	15	-5	16	24	-326
25	Gross Capital Formation	-1324	710	664	6039	11428
26	Income	4275	1119	155	12050	20754
27	Profit	3483	88	9	3449	6347

Table -4
Estimate of (i) employment, (ii) mandays employed and (iii) emoluments paid in the factory sector by their type for each 2-digit industry division (NIC-2008-2 digit)

SI No	Characteristics	All	01	10	11	12	13
A	No. Of Persons Engaged	381558	24	167265	2643	43682	21479
1	Workers	331043	16	156955	2111	42214	18604
1.1	Directly Employed	271204	16	152675	1402	15567	15334
	Men	93679	12	13929	823	2245	11978
	Women	177525	4	138746	579	13322	3356
1.2	Employed Through Contractors	59839	0	4280	709	26647	3270
2	Employees Other Than Workers	48080	8	9858	522	916	2817
2.1	Supervisory and Managerial	23487	1	4720	218	379	1250
2.2	Other Employees	24593	7	5138	304	537	1567
3	Unpaid family members/proprietor etc.	2436	0	452	10	552	58
B	Total Man days Employed (in '000)	101329	6	38226	785	11703	6665
C	Wages and Salaries Including Employers' Contribution	326167	12	61989	3748	9110	17161
1	Wages and Salary Including Bonus	269263	12	54294	3261	8297	14230
1.1	Wages and Salary	248173	11	47325	3090	7256	12758
1.1.1	Workers	157616	5	38856	1872	6794	9226
1.1.2	Supervisory & Managerial	57982	2	5332	868	238	2175
1.1.3	Other Employees	32575	4	3137	350	224	1357
1.2	Bonus to All Staff	21090	1	6970	170	1042	1472
2	Employers' Contribution	56904	0	7695	487	813	2931

Table -4 (contd.)

SI No	Characteristics	14	15	16	17	18	19
A	No. Of Persons Engaged	7800	3030	10603	5398	3188	5048
1	Workers	7125	2577	8347	4369	1877	3989
1.1	Directly Employed	7125	2141	6426	3611	1743	1263
	Men	1505	1729	3845	2674	1446	1256
	Women	5620	412	2581	937	297	7
1.2	Employed Through Contractors	0	435	1921	757	135	2726
2	Employees Other Than Workers	642	437	2008	973	1278	1059
2.1	Supervisory and Managerial	230	226	1091	641	461	687
2.2	Other Employees	412	211	917	332	817	372
3	Unpaid family members/proprietor etc.	34	17	248	56	33	0
B	Total Man days Employed (in '000)	2318	900	2906	1750	1026	1802
C	Wages and Salaries Including Employers' Contribution	5992	2147	7350	9888	5070	23411
1	Wages and Salary Including Bonus	4295	1828	6668	8331	4411	15890
1.1	Wages and Salary	4108	1655	6213	8145	4207	15560
1.1.1	Workers	3440	1249	3578	5479	1772	7499
1.1.2	Supervisory & Managerial	392	281	1779	2386	1259	6078
1.1.3	Other Employees	276	125	856	280	1176	1983
1.2	Bonus to All Staff	187	173	454	186	204	330
2	Employers' Contribution	1697	319	682	1557	659	7521

Table -4 (contd.)

SI No	Characteristics	20	21	22	23	24	25
A	No. Of Persons Engaged	12153	6425	22399	16685	12180	2682
1	Workers	7831	4424	17574	13386	10541	2132
1.1	Directly Employed	6892	3849	14176	12301	2340	1949
	Men	5993	2322	12101	8598	2205	1850
	Women	899	1527	2075	3703	135	99
1.2	Employed Through Contractors	938	575	3398	1085	8200	184
2	Employees Other Than Workers	4272	1985	4713	2742	1607	504
2.1	Supervisory and Managerial	2376	910	2593	1662	572	334
2.2	Other Employees	1896	1075	2120	1080	1035	170
3	Unpaid family members/proprietor etc.	50	16	112	557	32	46
B	Total Man days Employed (in '000)	3996	1928	6830	4463	3721	785
C	Wages and Salaries Including Employers' Contribution	35468	7795	28168	17303	11958	3260
1	Wages and Salary Including Bonus	28918	6470	22378	14494	10451	2761
1.1	Wages and Salary	27399	5964	20449	13206	10035	2615
1.1.1	Workers	15174	2983	13959	8795	7164	1945
1.1.2	Supervisory & Managerial	9026	1458	4608	2980	1561	514
1.1.3	Other Employees	3199	1523	1882	1431	1310	156
1.2	Bonus to All Staff	1519	507	1930	1288	416	145
2	Employers' Contribution	6550	1325	5790	2809	1507	499

Table -4 (contd.)

SI No	Characteristics	26	27	28	29	30	31
A	No. Of Persons Engaged	5069	4617	4888	328	5072	1649
1	Workers	3429	3458	3294	246	4427	1300
1.1	Directly Employed	3129	3165	3294	246	1623	1291
	Men	1963	2264	3238	141	1604	1066
	Women	1166	901	56	105	19	225
1.2	Employed Through Contractors	300	293	0	0	2804	9
2	Employees Other Than Workers	1639	1149	1550	72	642	322
2.1	Supervisory and Managerial	858	625	658	39	295	124
2.2	Other Employees	781	524	892	33	347	198
3	Unpaid family members/proprietor etc.	2	9	46	11	3	27
B	Total Man days Employed (in '000)	1467	1370	1537	95	1423	463
C	Wages and Salaries Including						
	Employers' Contribution	11592	9839	10527	183	18095	1122
1	Wages and Salary Including Bonus	9049	7450	8255	173	15082	968
1.1	Wages and Salary	8480	6848	7895	172	13815	947
1.1.1	Workers	3223	4142	4178	124	6547	669
1.1.2	Supervisory & Managerial	2194	1597	2260	39	3497	153
1.1.3	Other Employees	3063	1109	1457	9	3771	125
1.2	Bonus to All Staff	569	602	361	1	1266	21
2	Employers' Contribution	2543	2389	2272	10	3013	154

Table -4 (contd.)

SI No	Characteristics	32	33	38	58	Other
A	No. Of Persons Engaged	780	710	313	1684	13767
1	Workers	608	527	233	783	8670
1.1	Directly Employed	435	391	230	774	7819
	Men	121	318	230	774	7452
	Women	314	73	0	0	367
1.2	Employed Through Contractors	173	136	3	9	851
2	Employees Other Than Workers	171	181	80	902	5035
2.1	Supervisory and Managerial	88	121	18	532	1781
2.2	Other Employees	83	60	62	370	3254
3	Unpaid family members/proprietor etc.	1	3	0	0	63
B	Total Man days Employed (in '000)	232	210	59	585	4077
C	Wages and Salaries Including					
	Employers' Contribution	792	1031	146	8601	14408
1	Wages and Salary Including Bonus	664	809	135	7179	12509
1.1	Wages and Salary	648	789	135	6859	11588
1.1.1	Workers	385	562	45	1852	6101
1.1.2	Supervisory & Managerial	199	175	57	3951	2922
1.1.3	Other Employees	64	52	33	1056	2565
1.2	Bonus to All Staff	17	20	0	320	920
2	Employers' Contribution	128	222	11	1422	1899

ANNEXURE III
ASI DATA – ALL INDIA LEVEL

Table -5
Estimate of selected characteristics of factory sector by 3-digit industry class
(NIC-2008)

SI No	Characteristics	All	016	089	101	102	103
1	Number Of Factories	155321	2902	80	90	352	709
2	Factories In Operation	149382	2610	72	87	317	690
3	Fixed Capital	105596614	214375	14915	101975	101933	275858
4	Physical Working Capital	47921159	230931	3024	51512	106180	111511
5	Working Capital	31123298	169633	-40	55693	41145	72045
6	Invested Capital	153517773	445306	17939	153487	208113	387369
7	Gross Value Of Addition To Fixed Capital	29670250	68353	7105	16052	15436	77912
8	Rent Paid For Fixed Assets	975778	1481	257	647	2452	10421
9	Outstanding Loan	53641948	232352	4097	27652	72118	195269
10	Interest Paid	6868048	34743	937	6068	24186	22419
11	Rent Received For Fixed Assets	232299	1191	2	135	473	269
12	Interest Received	674095	4140	39	252	845	760
13	Gross Value Of Plant & Machinery	103440390	59564	5059	84884	64750	164964
14	Value Of Product And By-Product	286314842	1179594	19896	591489	638647	457632
15	Total Output	327279786	1520688	20365	661166	729314	572283
16	Fuels Consumed	15216203	28360	2092	17889	24520	24023
17	Materials Consumed	206598245	1095102	915	493993	585367	313838
18	Total Inputs	266148638	1418813	8779	576382	654841	505210
19	Gross Value Added	61131148	101875	11586	84784	74473	67073
20	Depreciation	8354590	17850	1354	8992	10870	22094
21	Net Value Added	52776558	84026	10232	75793	63602	44978
22	Net Fixed Capital Formation	14240111	45227	4121	3690	-2706	38890
23	Gross Fixed Capital Formation	22594701	63077	5475	12682	8164	60984
24	Addition in Stock of	3563843	-47016	-242	8452	-15897	11483
	(a) Materials, Fuels etc.	1974707	1223	47	2173	-2950	4547
	(b) Semi Finished Goods	909350	68	200	1446	-396	330
	(c) Finished Goods	679786	-48307	-489	4833	-12551	6606
25	Gross Capital Formation	26158544	16061	5233	21134	-7734	72467
26	Income	44932732	47802	9038	69078	36964	12139
27	Profit	29699112	15960	6659	53384	14982	-23100

Table -5 (contd.)

SI No	Characteristics	104	105	106	107	108	110
1	Number Of Factories	2429	1100	14052	6577	547	1362
2	Factories In Operation	2239	1069	13318	6233	526	1308
3	Fixed Capital	845007	547866	993503	3856825	89425	1303249
4	Physical Working Capital	1184040	363839	2037452	3143821	102461	490155
5	Working Capital	371012	149017	644234	880240	69040	405408
6	Invested Capital	2029048	911705	3030955	7000646	191886	1793404
7	Gross Value Of Addition To Fixed Capital	206196	181807	269343	746644	16211	403180
8	Rent Paid For Fixed Assets	7372	10800	21416	28007	1568	14746
9	Outstanding Loan	664545	374300	1026175	3054134	69972	608670
10	Interest Paid	107376	35954	259713	424561	10022	64860
11	Rent Received For Fixed Assets	4114	939	1646	8287	156	11482
12	Interest Received	18558	6301	9038	22567	722	4505
13	Gross Value Of Plant & Machinery	768966	435326	442807	3945068	66642	1061491
14	Value Of Product And By-Product	10067456	3831385	7929052	7927407	954952	3070945
15	Total Output	11885790	4264721	9102294	8969583	1039257	3312317
16	Fuels Consumed	189804	118821	206693	348592	28903	137730
17	Materials Consumed	9187091	3304343	6862001	5943150	845094	1727361
18	Total Inputs	11237088	3851335	8237670	7492934	961952	2267979
19	Gross Value Added	648702	413386	864624	1476649	77305	1044338
20	Depreciation	67927	47857	94040	286375	8579	122107
21	Net Value Added	580776	365529	770584	1190274	68726	922231
22	Net Fixed Capital Formation	117675	118952	157846	242935	5725	211398
23	Gross Fixed Capital Formation	185602	166809	251887	529310	14304	333504
24	Addition in Stock of	-113821	34940	273522	-53631	12996	126184
	(a) Materials, Fuels etc.	-162883	-540	285863	75210	9209	82625
	(b) Semi Finished Goods	8424	3855	-1403	-10541	-225	20709
	(c) Finished Goods	40638	31625	-10938	-118300	4012	22850
25	Gross Capital Formation	71781	201748	525409	475678	27300	459689
26	Income	466027	318776	489454	737706	57136	842625
27	Profit	383453	155825	317526	118643	29250	678605

Table -5 (contd.)

Sl No	Characteristics	120	131	139	141	142	143
1	Number Of Factories	3280	9617	3743	3959	44	1758
2	Factories In Operation	3119	9123	3579	3830	44	1616
3	Fixed Capital	251115	7318955	1290545	999307	3807	312568
4	Physical Working Capital	366251	2269422	609776	888018	6735	227299
5	Working Capital	281052	1515781	456762	773518	21790	121446
6	Invested Capital	617366	9588378	1900321	1887325	10541	539867
7	Gross Value Of Addition To Fixed Capital	74928	1512763	273706	248775	862	59777
8	Rent Paid For Fixed Assets	9562	22869	13549	69839	144	4080
9	Outstanding Loan	92206	5506480	911449	720632	27474	245586
10	Interest Paid	17459	592479	134156	105945	650	44292
11	Rent Received For Fixed Assets	6346	9811	2077	9848	55	263
12	Interest Received	2581	31297	6147	4097	30	2177
13	Gross Value Of Plant & Machinery	274538	8448439	1070177	588339	1006	168373
14	Value Of Product And By-Product	1869031	11535303	3116351	3335527	21995	1238579
15	Total Output	2019260	13589055	3580955	4000510	23180	1352016
16	Fuels Consumed	21053	1351931	147932	86615	185	30549
17	Materials Consumed	792133	8613515	2176735	1952775	14354	713681
18	Total Inputs	1087064	11451920	2947389	3017914	16436	1114891
19	Gross Value Added	932196	2137135	633566	982596	6744	237125
20	Depreciation	27156	669679	118864	95778	260	40431
21	Net Value Added	905040	1467457	514701	886818	6483	196694
22	Net Fixed Capital Formation	19606	377564	94324	91266	711	14873
23	Gross Fixed Capital Formation	46762	1047243	213188	187044	971	55305
24	Addition in Stock of	49672	-98009	20252	98599	1632	45736
	(a) Materials, Fuels etc.	28150	-146717	3328	27554	1242	8387
	(b) Semi Finished Goods	2161	48684	8707	9314	87	13829
	(c) Finished Goods	19361	24	8217	61731	303	23520
25	Gross Capital Formation	96433	949235	233441	285643	2604	101040
26	Income	878020	852109	366996	711034	5690	148321
27	Profit	730085	-92346	118858	170116	1225	33578

Table -5 (contd.)

Sl No	Characteristics	151	152	161	162	170	181
1	Number Of Factories	1228	1331	1127	1975	4637	3272
2	Factories In Operation	1194	1305	998	1896	4542	3238
3	Fixed Capital	173090	359493	28942	221185	2650958	992077
4	Physical Working Capital	201987	321336	25288	176742	696711	241930
5	Working Capital	80756	182238	23406	123121	440137	209084
6	Invested Capital	375077	680828	54230	397926	3347668	1234007
7	Gross Value Of Addition To Fixed Capital	42834	135355	4728	69529	810948	290262
8	Rent Paid For Fixed Assets	3669	13155	375	2961	14234	18427
9	Outstanding Loan	90698	186031	26008	152000	1305344	808577
10	Interest Paid	17975	35991	2730	22962	154889	73622
11	Rent Received For Fixed Assets	1782	1064	97	435	4116	8902
12	Interest Received	633	1549	268	1559	11114	6843
13	Gross Value Of Plant & Machinery	80216	226779	16685	166031	2618056	675334
14	Value Of Product And By-Product	833653	1282648	119878	634491	3858385	1079295
15	Total Output	941394	1516745	139125	710418	4107717	1930409
16	Fuels Consumed	23118	38691	1748	35061	464039	47747
17	Materials Consumed	667380	931972	108629	483643	2415385	1028853
18	Total Inputs	807572	1253826	129672	618723	3252867	1474216
19	Gross Value Added	133822	262919	9453	91695	854850	456193
20	Depreciation	18066	37652	1529	21653	176937	91233
21	Net Value Added	115757	225267	7923	70042	677914	364959
22	Net Fixed Capital Formation	21118	62516	2957	26739	471313	131815
23	Gross Fixed Capital Formation	39183	100168	4486	48391	648249	223048
24	Addition in Stock of	4055	36260	2386	22418	85950	42992
	(a) Materials, Fuels etc.	1423	15538	1249	12401	48176	35966
	(b) Semi Finished Goods	906	9472	463	1891	12898	1750
	(c) Finished Goods	1726	11250	674	8126	24876	5276
25	Gross Capital Formation	43238	136429	6873	70810	734200	266040
26	Income	94113	176121	4818	44119	508790	272910
27	Profit	31840	50040	-316	-3801	250385	83355

Table -5 (contd.)

SI No	Characteristics	182	191	192	201	202	203
1	Number Of Factories	18	515	438	3229	5137	90
2	Factories In Operation	18	493	423	3129	4975	88
3	Fixed Capital	10800	387072	7338029	8567075	2546908	581860
4	Physical Working Capital	1641	345155	2932761	1997959	1565467	128277
5	Working Capital	1797	304905	1448245	1030234	1102138	74014
6	Invested Capital	12441	732227	10270790	10565033	4112375	710137
7	Gross Value Of Addition To Fixed Capital	3846	118196	1153887	2162312	839087	80566
8	Rent Paid For Fixed Assets	804	30422	22779	28751	28311	1439
9	Outstanding Loan	8707	164930	642895	2689212	1265578	187989
10	Interest Paid	552	23267	142909	389643	276954	22930
11	Rent Received For Fixed Assets	7	744	4189	11646	4303	475
12	Interest Received	114	4645	22461	44830	24575	1425
13	Gross Value Of Plant & Machinery	17244	384619	8733079	11582213	2318993	1325571
14	Value Of Product And By-Product	17776	1295702	45579246	16884155	8505199	943783
15	Total Output	20488	1515385	46574470	18375260	9596207	968188
16	Fuels Consumed	889	33809	578759	1681085	344021	96304
17	Materials Consumed	6888	966250	37166341	11679108	5640235	696270
18	Total Inputs	11990	1209266	39233872	15206283	7307301	845879
19	Gross Value Added	8498	306119	7340598	3168977	2288906	122309
20	Depreciation	1088	35754	590283	710588	214401	63131
21	Net Value Added	7411	270365	6750315	2458390	2074506	59179
22	Net Fixed Capital Formation	1781	30262	497302	870856	421409	5674
23	Gross Fixed Capital Formation	2868	66016	1087585	1581444	635810	68805
24	Addition in Stock of	52	116280	-820011	36434	143850	-47326
	(a) Materials, Fuels etc.	-70	49160	-358723	15682	130122	-31033
	(b) Semi Finished Goods	-19	304	-123823	31620	-12789	-3070
	(c) Finished Goods	141	66816	-337465	-10868	26517	-13223
25	Gross Capital Formation	2920	182295	267574	1617878	779660	21478
26	Income	6054	216676	6584627	2039996	1769241	34810
27	Profit	4896	159352	6219881	1373172	1244781	-44410

Table -5 (contd.)

Sl No	Characteristics	210	221	222	231	239	241
1	Number Of Factories	3420	1978	6357	622	15966	4167
2	Factories In Operation	3292	1936	6203	588	15127	4032
3	Fixed Capital	4233373	1069502	2097019	844639	6649858	17038114
4	Physical Working Capital	2006682	520302	796234	221745	1711161	5607817
5	Working Capital	2318041	388278	739807	274376	1477137	3316144
6	Invested Capital	6240055	1589804	2893253	1066384	8361019	22645931
7	Gross Value Of Addition To Fixed Capital	1087261	363325	650920	234651	2571112	5092956
8	Rent Paid For Fixed Assets	32560	10752	19472	6284	82701	40112
9	Outstanding Loan	2325801	364324	1704866	436465	2753982	8598112
10	Interest Paid	203957	51384	192589	42357	269527	1039774
11	Rent Received For Fixed Assets	10772	3084	2523	609	10402	11333
12	Interest Received	21318	9172	11610	1133	24864	79753
13	Gross Value Of Plant & Machinery	3071094	1164722	2220241	931033	6511155	16157158
14	Value Of Product And By-Product	8543221	3501376	5633303	892726	10499970	32997774
15	Total Output	10200034	3768639	6167338	927634	11212637	36082873
16	Fuels Consumed	316445	160867	283514	202491	2028033	3455471
17	Materials Consumed	4347988	2391074	3988248	414682	4003507	22784154
18	Total Inputs	6692389	2894967	4948254	713292	7291202	29829098
19	Gross Value Added	3507645	873672	1219084	214342	3921435	6253775
20	Depreciation	327539	118797	208101	68273	447266	1014354
21	Net Value Added	3180105	754876	1010984	146068	3474168	5239421
22	Net Fixed Capital Formation	541819	176420	296735	140929	1435790	3495803
23	Gross Fixed Capital Formation	869358	295216	504836	209202	1883056	4510157
24	Addition in Stock of	395563	54644	69563	46755	308393	722427
	(a) Materials, Fuels etc.	238135	16053	47054	24081	151753	444122
	(b) Semi Finished Goods	71696	20812	17160	7250	77577	32202
	(c) Finished Goods	85732	17779	5349	15424	79063	246103
25	Gross Capital Formation	1264920	349860	574398	255956	2191449	5232584
26	Income	2943588	692740	798923	97427	3121941	4159535
27	Profit	2199216	456983	517863	18884	2460263	2746222

Table -5 (contd.)

Sl No	Characteristics	242	243	251	252	259	261
1	Number Of Factories	1144	3345	2994	40	6739	758
2	Factories In Operation	1125	3291	2889	40	6605	745
3	Fixed Capital	2458507	1421184	1149583	8928	1411905	391582
4	Physical Working Capital	945798	936453	1200749	4891	797073	241614
5	Working Capital	1343318	693658	596194	5544	646519	287208
6	Invested Capital	3404305	2357637	2350332	13819	2208978	633196
7	Gross Value Of Addition To Fixed Capital	448128	509795	429843	2606	471451	108800
8	Rent Paid For Fixed Assets	10706	7483	20939	104	13262	8272
9	Outstanding Loan	833264	786770	842641	5551	843646	318024
10	Interest Paid	73364	128473	123026	902	127867	32845
11	Rent Received For Fixed Assets	2140	1330	4436	64	3101	1714
12	Interest Received	74308	8393	30626	39	7608	4076
13	Gross Value Of Plant & Machinery	2882396	1211262	765150	5319	1096829	399580
14	Value Of Product And By-Product	7100817	4827710	4725598	25583	3793577	1272712
15	Total Output	7284080	5189955	5519820	29083	4460840	1507228
16	Fuels Consumed	602786	354741	96006	884	216199	26084
17	Materials Consumed	4845338	3539947	3573990	15851	2658937	917473
18	Total Inputs	5824362	4414833	4407894	21909	3601718	1159566
19	Gross Value Added	1459718	775122	1111926	7174	859122	347662
20	Depreciation	178163	109825	77975	665	123181	43487
21	Net Value Added	1281555	665297	1033951	6509	735940	304175
22	Net Fixed Capital Formation	208003	276159	258298	1852	306159	52235
23	Gross Fixed Capital Formation	386166	385984	336273	2517	429340	95722
24	Addition in Stock of	-190512	164729	319669	630	67483	53462
	(a) Materials, Fuels etc.	-64219	107681	140560	-102	30553	30956
	(b) Semi Finished Goods	-112448	31350	124610	414	17132	959
	(c) Finished Goods	-13845	25698	54499	318	19798	21547
25	Gross Capital Formation	195654	550712	655943	3147	496823	149183
26	Income	1197485	529342	889986	5502	594812	263057
27	Profit	948198	264641	513648	2667	282186	109478

Table -5 (contd.)

Sl No	Characteristics	262	263	264	265	266	267
1	Number Of Factories	158	251	245	541	69	61
2	Factories In Operation	157	241	230	532	69	56
3	Fixed Capital	300298	589458	456281	170520	22359	14134
4	Physical Working Capital	166739	204300	270465	115582	19040	15165
5	Working Capital	129207	441480	266061	131367	25025	23356
6	Invested Capital	467036	793758	726745	286102	41399	29299
7	Gross Value Of Addition To Fixed Capital	40808	128002	89383	46708	11022	1432
8	Rent Paid For Fixed Assets	8793	19186	11956	5280	327	1717
9	Outstanding Loan	176693	219257	395726	168679	13446	17028
10	Interest Paid	5642	28153	36359	25362	1984	3017
11	Rent Received For Fixed Assets	125	11326	455	563	621	116
12	Interest Received	614	2211	740	2216	93	76
13	Gross Value Of Plant & Machinery	413185	384041	631994	124985	15234	12954
14	Value Of Product And By-Product	991131	1657072	1819331	736035	82134	41761
15	Total Output	1119844	2325411	2245171	837636	93255	45541
16	Fuels Consumed	22610	14464	19115	10700	1267	770
17	Materials Consumed	732700	904406	1430452	422079	56055	19947
18	Total Inputs	928597	1622340	1954642	563391	70989	27904
19	Gross Value Added	191247	703071	290529	274245	22266	17637
20	Depreciation	52464	56632	54795	16972	1444	1724
21	Net Value Added	138782	646438	235734	257273	20822	15912
22	Net Fixed Capital Formation	-24683	63317	25420	26075	5219	-405
23	Gross Fixed Capital Formation	27782	119949	80215	43047	6663	1319
24	Addition in Stock of	16148	34353	-16030	11163	10373	4507
	(a) Materials, Fuels etc.	-4438	27588	10992	1233	7195	1340
	(b) Semi Finished Goods	1615	840	-3051	6707	1211	3032
	(c) Finished Goods	18971	5925	-23971	3223	1967	135
25	Gross Capital Formation	43929	154302	64184	54211	17036	5826
26	Income	124347	599099	187419	226631	18511	11179
27	Profit	80382	415492	126656	125428	12975	6473

Table -5 (contd.)

Sl No	Characteristics	268	271	272	273	274	275
1	Number Of Factories	20	2078	307	1013	466	658
2	Factories In Operation	20	2027	287	981	458	617
3	Fixed Capital	3508	826200	347203	562342	205587	303675
4	Physical Working Capital	1616	920432	156242	370135	86459	204778
5	Working Capital	2475	1048933	185527	385531	92166	118628
6	Invested Capital	5125	1746631	503445	932477	292046	508453
7	Gross Value Of Addition To Fixed Capital	877	328012	150707	156479	53412	115453
8	Rent Paid For Fixed Assets	54	36579	2618	6487	2231	6168
9	Outstanding Loan	951	421825	227628	493136	96363	204792
10	Interest Paid	232	83835	24326	93589	15613	16421
11	Rent Received For Fixed Assets	0	1900	316	1308	175	2971
12	Interest Received	25	13699	4119	4042	650	1098
13	Gross Value Of Plant & Machinery	2323	583904	275263	470553	251663	296001
14	Value Of Product And By-Product	20722	5806793	964948	2602496	586556	956201
15	Total Output	20844	6480727	994578	2839202	655509	1108191
16	Fuels Consumed	307	64181	27714	46563	24900	11437
17	Materials Consumed	11772	4201422	658699	2103203	412093	675586
18	Total Inputs	15566	5127191	761821	2426368	520406	857438
19	Gross Value Added	5278	1353536	232757	412834	135103	250753
20	Depreciation	654	76042	22155	49959	19680	31224
21	Net Value Added	4624	1277493	210602	362875	115422	219529
22	Net Fixed Capital Formation	-229	184822	118375	108580	23156	64012
23	Gross Fixed Capital Formation	425	260864	140530	158539	42836	95237
24	Addition in Stock of	-274	59854	4654	-1654	382	30453
	(a) Materials, Fuels etc.	-292	15958	-5085	-10269	-929	19525
	(b) Semi Finished Goods	6	32043	-2204	12121	3476	8202
	(c) Finished Goods	12	11853	11943	-3506	-2165	2726
25	Gross Capital Formation	150	320718	145184	156885	43219	125689
26	Income	4337	1157079	183659	262799	97579	196940
27	Profit	1749	787977	129860	151743	49385	143307

Table -5 (contd.)

Sl No	Characteristics	279	281	282	291	292	293
1	Number Of Factories	730	4474	4443	154	481	3026
2	Factories In Operation	700	4425	4354	142	452	3005
3	Fixed Capital	181936	1714386	1713593	3713986	380856	2701779
4	Physical Working Capital	149241	1893842	1620558	1006390	69323	946852
5	Working Capital	275563	1313157	1022569	175942	45137	481462
6	Invested Capital	331177	3608228	3334151	4720376	450179	3648631
7	Gross Value Of Addition To Fixed Capital	53770	533962	513648	1766488	114866	908256
8	Rent Paid For Fixed Assets	4279	41983	30871	26371	3093	28278
9	Outstanding Loan	74695	817845	1430941	1101693	79850	1281565
10	Interest Paid	16975	133301	127294	98115	11572	171603
11	Rent Received For Fixed Assets	677	15224	7340	2488	834	5474
12	Interest Received	1578	27004	18995	25227	527	8552
13	Gross Value Of Plant & Machinery	148762	1570068	1513305	3626830	262687	2733965
14	Value Of Product And By-Product	955889	6390500	6638449	8798469	421143	6977250
15	Total Output	1020163	9100884	7917409	9541879	452614	7501270
16	Fuels Consumed	12772	127224	108254	119577	8949	205621
17	Materials Consumed	681584	4280186	4644416	7062874	294078	5002158
18	Total Inputs	808021	6438187	6346193	8236336	353052	6122239
19	Gross Value Added	212142	2662697	1571216	1305543	99562	1379031
20	Depreciation	19161	173315	167873	346342	11277	299738
21	Net Value Added	192981	2489382	1403343	959202	88285	1079293
22	Net Fixed Capital Formation	24312	270876	252162	927344	93331	415201
23	Gross Fixed Capital Formation	43473	444191	420035	1273686	104608	714939
24	Addition in Stock of	17776	491859	230047	87179	3326	88688
	(a) Materials, Fuels etc.	6616	142775	149720	106682	2157	69880
	(b) Semi Finished Goods	7349	245411	65191	-13512	-60	11689
	(c) Finished Goods	3811	103673	15136	-5991	1229	7119
25	Gross Capital Formation	61248	936050	650083	1360865	107933	803627
26	Income	171727	2314098	1245177	834716	73620	879411
27	Profit	117711	1518154	635199	402966	33637	324342

Table -5 (contd.)

Sl No	Characteristics	301	302	303	304	309	310
1	Number Of Factories	83	298	54	40	1376	948
2	Factories In Operation	83	295	54	40	1352	906
3	Fixed Capital	375058	104992	57290	2101	1002453	136355
4	Physical Working Capital	747047	117024	20274	2525	340569	111973
5	Working Capital	723726	94259	6843	3059	-159940	94583
6	Invested Capital	1122105	222016	77564	4626	1343022	248328
7	Gross Value Of Addition To Fixed Capital	220726	44117	32107	649	252626	28430
8	Rent Paid For Fixed Assets	4726	1639	3208	21	8332	4565
9	Outstanding Loan	310661	32515	37055	619	814200	60593
10	Interest Paid	32160	8353	1472	197	52932	13196
11	Rent Received For Fixed Assets	274	124	35	2	2063	1902
12	Interest Received	2879	2844	585	159	7283	395
13	Gross Value Of Plant & Machinery	139373	66623	39188	2841	1034423	108255
14	Value Of Product And By-Product	708932	458102	81835	3993	4951597	508140
15	Total Output	839005	536426	114762	4215	5208106	609152
16	Fuels Consumed	5321	11277	1875	170	98300	20471
17	Materials Consumed	356943	331078	59424	1888	3666147	349494
18	Total Inputs	536468	425526	77048	2953	4246080	486298
19	Gross Value Added	302537	110900	37714	1262	962026	122854
20	Depreciation	13769	7717	4960	297	112077	16467
21	Net Value Added	288768	103182	32754	965	849950	106387
22	Net Fixed Capital Formation	186278	30837	23745	321	66251	7852
23	Gross Fixed Capital Formation	200047	38554	28704	618	178328	24319
24	Addition in Stock of	326818	36713	-2462	-141	6255	4008
	(a) Materials, Fuels etc.	125275	28968	-3116	99	14321	1409
	(b) Semi Finished Goods	201505	7324	236	-159	1264	4655
	(c) Finished Goods	38	421	418	-81	-9330	-2056
25	Gross Capital Formation	526865	75268	26243	476	184583	28327
26	Income	251881	93190	28075	747	788686	88626
27	Profit	196158	53986	9178	-669	519944	27304

Table -5 (contd.)

Sl No	Characteristics	321	322	323	324	325	329
1	Number Of Factories	1037	21	115	131	349	761
2	Factories In Operation	968	21	115	131	343	737
3	Fixed Capital	335125	1375	15465	12844	130194	227814
4	Physical Working Capital	1164613	752	16085	16617	75756	122299
5	Working Capital	603027	882	18564	-11399	96690	154801
6	Invested Capital	1499737	2127	31551	29461	205950	350113
7	Gross Value Of Addition To Fixed Capital	44294	545	2925	2942	31446	47615
8	Rent Paid For Fixed Assets	8311	60	121	992	2789	3421
9	Outstanding Loan	782427	1369	8346	10185	122075	127213
10	Interest Paid	140231	156	1887	2417	10284	15585
11	Rent Received For Fixed Assets	3002	91	20	17	103	398
12	Interest Received	1621	5	9	34	2974	2650
13	Gross Value Of Plant & Machinery	178868	781	3960	7219	115109	172104
14	Value Of Product And By-Product	4369243	3748	64261	47763	316649	632363
15	Total Output	5723708	3802	76331	49359	367783	730116
16	Fuels Consumed	23508	211	1927	1545	9668	18053
17	Materials Consumed	3983165	2312	44214	33470	156237	450347
18	Total Inputs	5439781	2866	60024	40655	226105	586105
19	Gross Value Added	283927	936	16307	8704	141678	144011
20	Depreciation	30691	122	1420	1338	12518	20360
21	Net Value Added	253237	815	14886	7366	129160	123651
22	Net Fixed Capital Formation	6266	371	1218	1476	12378	21461
23	Gross Fixed Capital Formation	36957	493	2638	2814	24896	41821
24	Addition in Stock of	78699	115	101	2139	9142	1057
	(a) Materials, Fuels etc.	-45363	85	288	1412	8335	-5391
	(b) Semi Finished Goods	-15221	29	-8	507	1682	7973
	(c) Finished Goods	139283	1	-179	220	-875	-1525
25	Gross Capital Formation	115656	608	2740	4953	34037	42878
26	Income	104694	598	12879	3957	116087	104644
27	Profit	-66392	58	6229	422	72664	59177

Table -5 (contd.)

Sl No	Characteristics	331	332	381	382	383	581	Others
1	Number Of Factories	689	110	9	34	146	204	6614
2	Factories In Operation	673	109	9	32	134	199	6479
3	Fixed Capital	113639	26212	8611	21521	9338	274173	7381042
4	Physical Working Capital	65380	38418	532	550	69318	69979	906088
5	Working Capital	105076	25765	-2756	5714	25024	97762	-56046
6	Invested Capital	179019	64630	9142	22071	78656	344152	8287138
7	Gross Value Of Addition To Fixed Capital	20252	12837	3107	14320	3011	89836	1943735
8	Rent Paid For Fixed Assets	5532	998	17	30	590	4380	52589
9	Outstanding Loan	90535	23554	969	10039	17920	134783	2660248
10	Interest Paid	13173	1613	223	419	3808	15576	324661
11	Rent Received For Fixed Assets	1824	65	59	0	101	10301	13642
12	Interest Received	289	97	5	12	1486	634	31696
13	Gross Value Of Plant & Machinery	27244	22843	5814	20265	7059	199470	5760079
14	Value Of Product And By-Product	264063	171798	6767	1101	128368	255237	4260188
15	Total Output	655861	185251	16849	6838	191617	484962	11786794
16	Fuels Consumed	4389	2164	1201	1166	2731	9944	321369
17	Materials Consumed	184442	111882	7082	1908	106581	263580	3000751
18	Total Inputs	460495	142610	11195	4838	167599	357513	9694246
19	Gross Value Added	195366	42641	5654	2000	24018	127449	2092548
20	Depreciation	11222	2519	1840	993	1257	22209	371212
21	Net Value Added	184144	40122	3815	1008	22760	105240	1721339
22	Net Fixed Capital Formation	4466	7739	-202	7294	1033	18897	-10497
23	Gross Fixed Capital Formation	15688	10257	1638	8287	2289	41107	360717
24	Addition in Stock of	3080	5609	17	404	6719	14622	7151
	(a) Materials, Fuels etc.	582	2988	17	400	-1711	12891	-10412
	(b) Semi Finished Goods	819	2614	0	0	41	76	2380
	(c) Finished Goods	1679	7	0	4	8389	1655	15183
25	Gross Capital Formation	18767	15866	1654	8692	9008	55729	367869
26	Income	165439	37511	3575	559	18363	85284	1344080
27	Profit	106889	18728	2692	-524	14782	22135	990783

Table -6
Estimate of (i) employment, (ii) mandays employed and (iii) emoluments paid in the factory sector by their type for each 4-digit industry division (NIC-2008)

Characteristics		All	016	089	101	102	103
A	No. Of Persons Engaged	11327485	106798	5423	14546	33061	45001
1	Workers	8776745	87381	4867	11336	27782	36290
1.1	Directly Employed	5977328	50086	672	5718	14733	18963
	Men	4779073	32961	653	4948	7730	11345
	Women	1198255	17125	19	770	7003	7618
1.2	Employed Through Contractors	2799417	37295	4195	5618	13049	17327
2	Employees Other Than Workers	2476049	17274	496	3195	5180	8409
2.1	Supervisory and Managerial	1086849	5588	217	1316	2347	4613
2.2	Other Employees	1389200	11686	279	1879	2833	3796
3	Unpaid family members/proprietor etc.	74692	2144	59	14	99	303
B	Total Man days Employed (in '000)	3386622	20594	1174	4579	10574	12347
C	Wages and Salaries Including						
	Employers' Contribution	15233620	31842	2379	15694	21982	35239
1	Wages and Salary Including Bonus	12944123	30493	2119	14175	19908	31683
1.1	Wages and Salary	12262100	29783	2067	13489	19062	30253
1.1.1	Workers	5977184	21303	1444	7815	11728	14702
1.1.2	Supervisory & Managerial	4344878	4289	415	3542	5059	11672
1.1.3	Other Employees	1940038	4191	208	2132	2275	3879
1.2	Bonus to All Staff	682023	710	52	687	846	1429
2	Employers' Contribution	2289497	1349	260	1519	2074	3556

Table -6 (contd.)

Characteristics		104	105	106	107	108	110
A	No. Of Persons Engaged	106800	102245	346779	762793	28395	123898
1	Workers	82965	70709	265303	617338	21603	94368
1.1	Directly Employed	45365	45842	153595	525701	12685	49541
	Men	43317	43247	128913	303296	11883	43553
	Women	2048	2595	24682	222405	802	5988
1.2	Employed Through Contractors	37600	24867	111709	91636	8918	44827
2	Employees Other Than Workers	22409	31290	70200	142432	6611	29038
2.1	Supervisory and Managerial	8644	11776	25990	43247	2719	11338
2.2	Other Employees	13765	19514	44210	99185	3892	17700
3	Unpaid family members/proprietor etc.	1426	247	11276	3023	181	492
B	Total Man days Employed (in '000)	31626	35806	87626	215490	8894	38674
C	Wages and Salaries Including						
	Employers' Contribution	82574	162951	171928	619063	27885	164020
1	Wages and Salary Including Bonus	75376	137870	161886	533828	24722	142055
1.1	Wages and Salary	71716	132097	155242	494537	23460	135186
1.1.1	Workers	39956	61557	96664	282380	12588	65080
1.1.2	Supervisory & Managerial	20015	38742	33333	112900	6390	46033
1.1.3	Other Employees	11745	31798	25245	99257	4482	24073
1.2	Bonus to All Staff	3660	5773	6644	39292	1262	6869
2	Employers' Contribution	7198	25081	10042	85235	3163	21965

Table -6 (contd.)

Characteristics		120	131	139	141	142	143
A	No. Of Persons Engaged	452026	1092922	307285	624664	2884	170330
1	Workers	429627	937842	255793	530178	2525	147104
1.1	Directly Employed	126588	806125	205762	446825	2113	142165
	Men	62408	664710	149485	190826	509	89074
	Women	64180	141415	56277	255999	1604	53091
1.2	Employed Through Contractors	303039	131718	50031	83353	412	4939
2	Employees Other Than Workers	19752	150305	49802	92735	350	22421
2.1	Supervisory and Managerial	6966	72602	21956	42375	178	9454
2.2	Other Employees	12786	77703	27846	50360	172	12967
3	Unpaid family members/proprietor etc.	2647	4774	1690	1751	8	806
B	Total Man days Employed (in '000)	132639	359688	93320	186398	823	49897
C	Wages and Salaries Including						
	Employers' Contribution	147935	944454	248138	540917	4465	114742
1	Wages and Salary Including Bonus	128970	814457	223598	474060	4185	106488
1.1	Wages and Salary	120886	769016	211857	445025	4118	99623
1.1.1	Workers	96560	520369	133317	270194	2648	72376
1.1.2	Supervisory & Managerial	15986	171473	50674	121807	175	15092
1.1.3	Other Employees	8340	77174	27866	53024	1295	12155
1.2	Bonus to All Staff	8084	45442	11741	29036	66	6864
2	Employers' Contribution	18965	129997	24540	66857	280	8254

Table -6 (contd.)

Characteristics		151	152	161	162	170	181
A	No. Of Persons Engaged	70505	180478	9924	58437	231415	128625
1	Workers	57856	154956	7270	44681	182788	85312
1.1	Directly Employed	45060	138132	6070	33206	129691	73381
	Men	35572	87019	4632	30574	115489	67076
	Women	9488	51113	1438	2632	14202	6305
1.2	Employed Through Contractors	12796	16824	1200	11475	53097	11931
2	Employees Other Than Workers	12087	24875	1788	12828	46488	41841
2.1	Supervisory and Managerial	5514	10707	1040	5943	21876	13350
2.2	Other Employees	6573	14168	748	6885	24612	28491
3	Unpaid family members/proprietor etc.	563	647	866	928	2139	1472
B	Total Man days Employed (in '000)	20935	53238	2590	16895	73637	40342
C	Wages and Salaries Including						
	Employers' Contribution	62273	126081	5134	47920	258405	189554
1	Wages and Salary Including Bonus	54156	110839	4784	43121	221808	162206
1.1	Wages and Salary	50285	103420	4575	40943	209515	154946
1.1.1	Workers	29139	67264	3132	22119	120034	61571
1.1.2	Supervisory & Managerial	15467	24486	1117	12475	61064	49781
1.1.3	Other Employees	5679	11670	326	6349	28417	43594
1.2	Bonus to All Staff	3871	7419	209	2178	12294	7260
2	Employers' Contribution	8117	15242	350	4799	36597	27348

Table -6 (contd.)

Characteristics		182	191	192	201	202	203
A	No. Of Persons Engaged	743	40136	73031	231939	323881	25233
1	Workers	528	32186	57974	158345	242264	20037
1.1	Directly Employed	323	21026	18403	92690	177639	16749
	Men	202	19505	18201	89420	113151	16493
	Women	121	1521	202	3270	64488	256
1.2	Employed Through Contractors	205	11160	39572	65654	64625	3288
2	Employees Other Than Workers	215	7420	15015	72732	79384	5174
2.1	Supervisory and Managerial	128	3095	9190	40997	37052	2842
2.2	Other Employees	87	4325	5825	31735	42332	2332
3	Unpaid family members/proprietor etc.	0	530	42	861	2232	23
B	Total Man days Employed (in '000)	225	12607	25265	77338	97546	8975
C	Wages and Salaries Including						
	Employers' Contribution	1158	57325	364746	666824	524459	79220
1	Wages and Salary Including Bonus	789	46523	261458	539246	439584	57021
1.1	Wages and Salary	735	43511	252973	516831	415694	53615
1.1.1	Workers	308	28502	125496	195612	133574	32648
1.1.2	Supervisory & Managerial	331	9674	104953	211707	206079	14762
1.1.3	Other Employees	96	5335	22524	109512	76041	6205
1.2	Bonus to All Staff	55	3012	8485	22415	23890	3406
2	Employers' Contribution	369	10802	103288	127578	84875	22199

Table -6 (contd.)

Characteristics		210	221	222	231	239	241
A	No. Of Persons Engaged	379083	149326	281655	58548	721238	600966
1	Workers	237966	116450	215388	47291	589753	466859
1.1	Directly Employed	142566	85290	153419	32339	266409	272765
	Men	122667	78700	138033	30814	241228	268088
	Women	19899	6590	15386	1525	25181	4677
1.2	Employed Through Contractors	95400	31159	61970	14951	323344	194093
2	Employees Other Than Workers	140447	32207	63732	10981	121027	132869
2.1	Supervisory and Managerial	59236	16643	28972	5305	55398	75833
2.2	Other Employees	81211	15564	34760	5676	65629	57036
3	Unpaid family members/proprietor etc.	669	670	2535	277	10458	1238
B	Total Man days Employed (in '000)	118645	46979	86152	18852	194646	202951
C	Wages and Salaries Including						
	Employers' Contribution	744372	235757	281060	78543	661678	1413313
1	Wages and Salary Including Bonus	643645	194828	246748	67347	570445	1146567
1.1	Wages and Salary	612084	178927	233460	62840	544012	1116045
1.1.1	Workers	195295	95674	111111	33506	290327	526191
1.1.2	Supervisory & Managerial	279647	60042	86827	19420	177911	464439
1.1.3	Other Employees	137142	23211	35522	9914	75774	125415
1.2	Bonus to All Staff	31562	15901	13287	4507	26432	30522
2	Employers' Contribution	100727	40929	34312	11196	91233	266746

Table -6 (contd.)

	Characteristics	242	243	251	252	259	261
A	No. Of Persons Engaged	86620	210968	223054	2074	282928	70487
1	Workers	64173	164978	174631	1646	220909	51643
1.1	Directly Employed	44423	103838	87719	1409	146769	37735
	Men	42660	102212	85830	1393	141262	27142
	Women	1763	1626	1889	16	5507	10593
1.2	Employed Through Contractors	19749	61140	86912	237	74140	13908
2	Employees Other Than Workers	21949	44612	47167	417	58548	18668
2.1	Supervisory and Managerial	11724	22619	24169	238	27484	10917
2.2	Other Employees	10225	21993	22998	179	31064	7751
3	Unpaid family members/proprietor etc.	498	1378	1257	11	3471	177
B	Total Man days Employed (in '000)	28452	63760	67214	626	84599	21462
C	Wages and Salaries Including						
	Employers' Contribution	249288	264701	376338	2835	312626	153579
1	Wages and Salary Including Bonus	210113	230020	338848	2550	273312	128653
1.1	Wages and Salary	201488	216410	325055	2414	259586	124033
1.1.1	Workers	114844	115693	155190	1163	138480	51106
1.1.2	Supervisory & Managerial	58212	75518	133663	1029	83736	58197
1.1.3	Other Employees	28432	25199	36202	222	37370	14730
1.2	Bonus to All Staff	8624	13609	13793	137	13726	4620
2	Employers' Contribution	39175	34681	37490	285	39314	24926

Table -6 (contd.)

	Characteristics	262	263	264	265	266	267
A	No. Of Persons Engaged	19670	38384	26988	45699	3360	3574
1	Workers	15240	21175	18234	29654	2302	2290
1.1	Directly Employed	8602	13190	11675	22729	1360	2126
	Men	6773	9862	9817	18492	1090	1779
	Women	1829	3328	1858	4237	270	347
1.2	Employed Through Contractors	6638	7984	6559	6925	941	164
2	Employees Other Than Workers	4414	17151	8651	15932	1058	1250
2.1	Supervisory and Managerial	2110	5686	3994	6557	504	282
2.2	Other Employees	2304	11465	4657	9375	554	968
3	Unpaid family members/proprietor etc.	16	58	103	112	0	34
B	Total Man days Employed (in '000)	6172	10915	8104	13414	1018	1072
C	Wages and Salaries Including						
	Employers' Contribution	43966	183607	60763	101202	5536	4706
1	Wages and Salary Including Bonus	38173	162417	52362	89327	5000	4050
1.1	Wages and Salary	36505	135246	44582	83096	4812	3832
1.1.1	Workers	13165	19723	15748	29429	1465	1756
1.1.2	Supervisory & Managerial	18093	38499	19649	33187	2339	880
1.1.3	Other Employees	5247	77024	9185	20480	1008	1196
1.2	Bonus to All Staff	1668	27171	7780	6231	187	218
2	Employers' Contribution	5793	21190	8401	11875	536	656

Table -6 (contd.)

	Characteristics	268	271	272	273	274	275
A	No. Of Persons Engaged	1170	164615	30103	67960	40959	37473
1	Workers	907	114640	22379	49408	32543	28667
1.1	Directly Employed	878	77590	14298	32343	21141	17250
	Men	565	70768	13276	30497	15870	15295
	Women	313	6822	1022	1846	5271	1955
1.2	Employed Through Contractors	29	37050	8081	17066	11402	11418
2	Employees Other Than Workers	264	49514	7589	18289	8287	8499
2.1	Supervisory and Managerial	132	25797	4502	9249	3401	3768
2.2	Other Employees	132	23717	3087	9040	4886	4731
3	Unpaid family members/proprietor etc.	0	462	135	262	129	306
B	Total Man days Employed (in '000)	353	49554	9486	21053	12449	11021
C	Wages and Salaries Including						
	Employers' Contribution	2588	369103	53799	111056	48194	53632
1	Wages and Salary Including Bonus	2380	313578	45609	94551	41360	46649
1.1	Wages and Salary	2279	297946	43625	90463	39088	42949
1.1.1	Workers	799	114701	18288	37878	21018	18427
1.1.2	Supervisory & Managerial	1292	142167	20163	39333	11184	17967
1.1.3	Other Employees	188	41078	5174	13252	6886	6555
1.2	Bonus to All Staff	101	15632	1983	4088	2272	3701
2	Employers' Contribution	208	55525	8190	16505	6834	6983

Table -6 (contd.)

	Characteristics	279	281	282	291	292	293
A	No. Of Persons Engaged	40226	449928	264246	112757	39584	357401
1	Workers	29444	230303	177027	81913	33083	277968
1.1	Directly Employed	20609	153195	129021	57596	13734	172375
	Men	18433	149651	126337	57039	13329	160418
	Women	2176	3544	2684	557	405	11957
1.2	Employed Through Contractors	8835	77107	48006	24316	19349	105593
2	Employees Other Than Workers	10517	218239	85527	30834	6307	78555
2.1	Supervisory and Managerial	4631	60948	40910	20597	2869	38878
2.2	Other Employees	5886	157291	44617	10237	3438	39677
3	Unpaid family members/proprietor etc.	266	1386	1692	10	194	878
B	Total Man days Employed (in '000)	11976	98904	79438	34093	11737	106809
C	Wages and Salaries Including						
	Employers' Contribution	54016	795943	609979	431750	39983	555069
1	Wages and Salary Including Bonus	45619	680319	508838	349602	35553	463541
1.1	Wages and Salary	43151	636408	484300	328536	34262	439774
1.1.1	Workers	18670	278073	166640	147921	20881	222953
1.1.2	Supervisory & Managerial	16899	230240	223994	146655	9550	158594
1.1.3	Other Employees	7582	128095	93666	33960	3831	58227
1.2	Bonus to All Staff	2469	43911	24537	21065	1292	23766
2	Employers' Contribution	8397	115624	101141	82148	4430	91528

Table -6 (contd.)

	Characteristics	301	302	303	304	309	310
A	No. Of Persons Engaged	26109	26676	6210	1238	158900	40371
1	Workers	21996	20746	4368	874	126139	31073
1.1	Directly Employed	5901	12671	3525	646	78996	22498
	Men	5843	12525	3467	635	77664	21669
	Women	58	146	58	11	1332	829
1.2	Employed Through Contractors	16095	8075	843	229	47143	8576
2	Employees Other Than Workers	4104	5839	1841	357	32120	8880
2.1	Supervisory and Managerial	2359	2909	1071	158	15693	3772
2.2	Other Employees	1745	2930	770	199	16427	5108
3	Unpaid family members/proprietor etc.	9	90	1	6	641	418
B	Total Man days Employed (in '000)	8111	8012	1779	368	47622	12257
C	Wages and Salaries Including						
	Employers' Contribution	55723	39204	18897	1415	268742	61322
1	Wages and Salary Including Bonus	48036	33592	16679	1208	208277	54589
1.1	Wages and Salary	45600	30909	16349	1145	197193	52799
1.1.1	Workers	27093	15670	8279	534	102158	24114
1.1.2	Supervisory & Managerial	11742	11020	5212	379	71562	19802
1.1.3	Other Employees	6765	4219	2858	232	23473	8883
1.2	Bonus to All Staff	2436	2683	331	63	11084	1789
2	Employers' Contribution	7687	5612	2218	207	60465	6733

Table -6 (contd.)

	Characteristics	321	322	323	324	325	329
A	No. Of Persons Engaged	136032	527	7621	4036	26249	51370
1	Workers	104055	423	6260	3103	18332	41863
1.1	Directly Employed	89139	407	5587	2501	15786	30752
	Men	76722	346	4622	2079	12368	18747
	Women	12417	61	965	422	3418	12005
1.2	Employed Through Contractors	14916	15	673	602	2547	11112
2	Employees Other Than Workers	31447	102	1314	858	7823	9151
2.1	Supervisory and Managerial	11490	52	644	430	3151	4555
2.2	Other Employees	19957	50	670	428	4672	4596
3	Unpaid family members/proprietor etc.	531	3	46	75	93	356
B	Total Man days Employed (in '000)	39091	158	2307	1189	7751	15414
C	Wages and Salaries Including						
	Employers' Contribution	171086	540	6649	3536	43423	45467
	Wages and Salary Including						
1	Bonus	153850	390	5823	3164	38523	39701
1.1	Wages and Salary	146820	358	5341	2988	37056	37485
1.1.1	Workers	87209	210	3096	1582	13349	20870
1.1.2	Supervisory & Managerial	36297	117	1620	963	17996	11731
1.1.3	Other Employees	23314	31	625	443	5711	4884
1.2	Bonus to All Staff	7030	32	482	175	1467	2216
2	Employers' Contribution	17236	150	826	372	4900	5766

Table -6 (contd.)

	Characteristics	331	332	381	382	383	581	Others
A	No. Of Persons Engaged	25349	8562	902	1042	5704	20385	268961
1	Workers	17787	5361	716	778	4774	9232	172795
1.1	Directly Employed	11125	4251	113	507	4145	7729	131810
	Men	10958	4017	95	502	3589	7628	130087
	Women	167	234	18	5	556	101	1723
1.2	Employed Through Contractors	6662	1111	603	272	630	1503	40985
2	Employees Other Than Workers	7199	3160	185	261	872	11117	94173
2.1	Supervisory and Managerial	3280	1658	91	120	315	3215	35477
2.2	Other Employees	3919	1502	94	141	557	7902	58696
3	Unpaid family members/proprietor etc.	364	40	2	2	57	36	1997
B	Total Man days Employed (in '000)	7466	2555	276	329	1311	6953	82029
C	Wages and Salaries Including							
	Employers' Contribution	58550	18783	883	1083	3580	63148	353298
1	Wages and Salary Including Bonus	52372	15153	783	981	3235	55066	313289
1.1	Wages and Salary	49525	14391	761	930	2983	51068	296737
1.1.1	Workers	24572	5082	430	457	2011	10983	123293
1.1.2	Supervisory & Managerial	15211	7438	256	303	625	23172	110615
1.1.3	Other Employees	9742	1871	75	170	347	16913	62829
1.2	Bonus to All Staff	2848	762	22	52	252	3999	16557
2	Employers' Contribution	6178	3630	100	102	345	8082	40009

Table -7
Estimate of selected characteristics of factory sector by 2-digit industry class
(NIC-2008)

Sl No	Characteristics	All	01	08	10	11	12
1	Number Of Factories	155321	2902	80	25854	1362	3280
2	Factories In Operation	149382	2610	72	24479	1308	3119
3	Fixed Capital	1055966.14	2143.75	149.15	68123.92	13032.49	2511.15
4	Physical Working Capital	479211.59	2309.31	30.24	71008.16	4901.55	3662.51
5	Working Capital	311232.98	1696.33	-0.40	22824.26	4054.08	2810.52
6	Invested Capital	1535177.73	4453.06	179.39	139132.08	17934.04	6173.66
7	Gross Value Of Addition To Fixed Capital	296702.50	683.53	71.05	15296.01	4031.80	749.28
8	Rent Paid For Fixed Assets	9757.78	14.81	2.57	826.83	147.46	95.62
9	Outstanding Loan	536419.48	2323.52	40.97	54841.65	6086.70	922.06
10	Interest Paid	68680.48	347.43	9.37	8902.99	648.60	174.59
11	Rent Received For Fixed Assets	2322.99	11.91	0.02	160.19	114.82	63.46
12	Interest Received	6740.95	41.40	0.39	590.44	45.05	25.81
13	Gross Value Of Plant & Machinery	1034403.90	595.64	50.59	59734.07	10614.91	2745.38
14	Value Of Product And By-Product	2863148.42	11795.94	198.96	323980.20	30709.45	18690.31
15	Total Output	3272797.86	15206.88	203.65	372244.08	33123.17	20192.60
16	Fuels Consumed	152162.03	283.60	20.92	9592.45	1377.30	210.53
17	Materials Consumed	2065982.45	10951.02	9.15	275348.77	17273.61	7921.33
18	Total Inputs	2661486.38	14188.13	87.79	335174.13	22679.79	10870.64
19	Gross Value Added	611311.48	1018.75	115.86	37069.95	10443.38	9321.96
20	Depreciation	83545.90	178.50	13.54	5467.33	1221.07	271.56
21	Net Value Added	527765.58	840.26	102.32	31602.62	9222.31	9050.40
22	Net Fixed Capital Formation	142401.11	452.27	41.21	6830.07	2113.98	196.06
23	Gross Fixed Capital Formation	225947.01	630.77	54.75	12297.41	3335.04	467.62
24	Addition in Stock of	35638.43	-470.16	-2.42	1580.42	1261.84	496.72
	(a) Materials, Fuels etc.	19747.07	12.23	0.47	2106.27	826.25	281.50
	(b) Semi Finished Goods	9093.50	0.68	2.00	14.90	207.09	21.61
	(c) Finished Goods	6797.86	-483.07	-4.89	-540.75	228.50	193.61
25	Gross Capital Formation	261585.44	160.61	52.33	13877.83	4596.89	964.33
26	Income	449327.32	478.02	90.38	21872.79	8426.25	8780.20
27	Profit	296991.12	159.60	66.59	10499.63	6786.05	7300.85

Table -7 (contd.)

Sl No	Characteristics	13	14	15	16	17	18
1	Number Of Factories	13360	5761	2559	3102	4637	3290
2	Factories In Operation	12703	5490	2498	2895	4542	3256
3	Fixed Capital	86095.01	13156.81	5325.83	2501.26	26509.58	10028.76
4	Physical Working Capital	28791.99	11220.52	5233.23	2020.30	6967.11	2435.71
5	Working Capital	19725.43	9167.54	2629.94	1465.27	4401.37	2108.81
6	Invested Capital	114886.99	24377.33	10559.06	4521.56	33476.68	12464.48
7	Gross Value Of Addition To Fixed Capital	17864.70	3094.14	1781.89	742.56	8109.48	2941.08
8	Rent Paid For Fixed Assets	364.18	740.64	168.23	33.36	142.34	192.31
9	Outstanding Loan	64179.29	9936.92	2767.29	1780.08	13053.44	8172.84
10	Interest Paid	7266.35	1508.87	539.66	256.92	1548.89	741.75
11	Rent Received For Fixed Assets	118.87	101.66	28.46	5.32	41.16	89.1
12	Interest Received	374.44	63.04	21.82	18.27	111.14	69.58
13	Gross Value Of Plant & Machinery	95186.16	7577.18	3069.95	1827.16	26180.56	6925.79
14	Value Of Product And By-Product	146516.54	45961.01	21163.02	7543.69	38583.85	10970.71
15	Total Output	171700.10	53757.06	24581.39	8495.42	41077.17	19508.97
16	Fuels Consumed	14998.63	1173.49	618.08	368.09	4640.39	486.36
17	Materials Consumed	107902.50	26808.10	15993.52	5922.72	24153.85	10357.42
18	Total Inputs	143993.09	41492.41	20613.98	7483.95	32528.67	14862.06
19	Gross Value Added	27707.01	12264.65	3967.41	1011.47	8548.5	4646.91
20	Depreciation	7885.43	1364.69	557.18	231.82	1769.37	923.21
21	Net Value Added	19821.57	10899.95	3410.23	779.65	6779.14	3723.7
22	Net Fixed Capital Formation	4718.88	1068.51	836.34	296.96	4713.13	1335.95
23	Gross Fixed Capital Formation	12604.31	2433.20	1393.52	528.78	6482.49	2259.16
24	Addition in Stock of	-777.57	1459.67	403.16	248.05	859.5	430.43
	(a) Materials, Fuels etc.	-1433.89	371.83	169.62	136.51	481.76	358.95
	(b) Semi Finished Goods	573.91	232.30	103.78	23.54	128.98	17.31
	(c) Finished Goods	82.41	855.54	129.76	88.00	248.76	54.17
25	Gross Capital Formation	11826.75	3892.87	1796.67	776.83	7342	2689.59
26	Income	12191.04	8650.44	2702.34	489.37	5087.9	2789.64
27	Profit	265.13	2049.20	818.80	-41.17	2503.85	882.51

Table -7 (contd.)

Sl No	Characteristics	19	20	21	22	23	24
1	Number Of Factories	953	8456	3420	8335	16588	8656
2	Factories In Operation	916	8191	3292	8139	15714	8448
3	Fixed Capital	77251.01	116958.43	42333.73	31665.21	74944.96	209178.05
4	Physical Working Capital	32779.16	36917.03	20066.82	13165.36	19329.07	74900.68
5	Working Capital	17531.5	22063.86	23180.41	11280.85	17515.13	53531.19
6	Invested Capital	110030.17	153875.45	62400.55	44830.57	94274.03	284078.73
7	Gross Value Of Addition To Fixed Capital	12720.82	30819.66	10872.61	10142.45	28057.64	60508.79
8	Rent Paid For Fixed Assets	532.02	585.02	325.6	302.24	889.85	583.01
9	Outstanding Loan	8078.25	41427.79	23258.01	20691.9	31904.47	102181.46
10	Interest Paid	1661.75	6895.26	2039.57	2439.73	3118.84	12416.11
11	Rent Received For Fixed Assets	49.33	164.25	107.72	56.07	110.11	148.04
12	Interest Received	271.06	708.3	213.18	207.83	259.97	1624.54
13	Gross Value Of Plant & Machinery	91176.98	152267.77	30710.94	33849.64	74421.88	202508.16
14	Value Of Product And By-Product	468749.48	263331.37	85432.21	91346.79	113926.95	449263.01
15	Total Output	480898.54	289396.56	102000.34	99359.78	121402.71	485569.09
16	Fuels Consumed	6125.68	21214.1	3164.45	4443.81	22305.25	44129.99
17	Materials Consumed	381325.91	180156.14	43479.88	63793.22	44181.88	311694.38
18	Total Inputs	404431.38	233594.62	66923.89	78432.2	80044.95	400682.93
19	Gross Value Added	76467.16	55801.94	35076.45	20927.58	41357.76	84886.16
20	Depreciation	6260.37	9881.19	3275.39	3268.97	5155.39	13023.42
21	Net Value Added	70206.8	45920.75	31801.05	17658.6	36202.37	71862.74
22	Net Fixed Capital Formation	5275.64	12979.39	5418.19	4731.55	15767.19	39799.65
23	Gross Fixed Capital Formation	11536.01	22860.59	8693.58	8000.52	20922.58	52823.07
24	Addition in Stock of	-7037.32	1329.58	3955.63	1242.07	3551.47	6966.44
	(a) Materials, Fuels etc.	-3095.64	1147.71	2381.35	631.07	1758.33	4875.84
	(b) Semi Finished Goods	-1235.19	157.61	716.96	379.72	848.27	-488.96
	(c) Finished Goods	-2706.49	24.26	857.32	231.28	944.87	2579.56
25	Gross Capital Formation	4498.69	24190.16	12649.2	9242.58	24474.05	59789.51
26	Income	68013.03	38440.47	29435.88	14916.63	32193.68	58863.62
27	Profit	63792.33	25735.44	21992.16	9748.46	24791.47	39590.61

Table -7 (contd.)

Sl No	Characteristics	25	26	27	28	29	30
1	Number Of Factories	9773	2104	5252	8917	3662	1851
2	Factories In Operation	9534	2051	5070	8779	3599	1824
3	Fixed Capital	25704.16	19481.39	24269.43	34279.79	67966.21	15418.94
4	Physical Working Capital	20027.13	10345.2	18872.87	35144	20225.65	12274.38
5	Working Capital	12482.57	13061.79	21063.49	23357.26	7025.41	6679.46
6	Invested Capital	45731.3	29826.6	43142.3	69423.8	88191.86	27693.33
7	Gross Value Of Addition To Fixed Capital	9039	4270.31	8578.33	10476.1	27896.11	5502.25
8	Rent Paid For Fixed Assets	343.05	555.85	583.61	728.54	577.43	179.25
9	Outstanding Loan	16918.38	13098.05	15184.4	22487.87	24631.08	11950.5
10	Interest Paid	2517.95	1335.95	2507.59	2605.95	2812.89	951.14
11	Rent Received For Fixed Assets	76.01	149.21	73.46	225.63	87.96	24.98
12	Interest Received	382.73	100.5	251.86	459.98	343.06	137.5
13	Gross Value Of Plant & Machinery	18672.98	19842.96	20261.45	30833.73	66234.82	12824.48
14	Value Of Product And By-Product	85447.57	66208.98	118728.82	130289.49	161968.62	62044.58
15	Total Output	100097.43	81949.29	130983.7	170182.93	174957.63	67025.14
16	Fuels Consumed	3130.89	953.19	1875.67	2354.77	3341.47	1169.43
17	Materials Consumed	62487.77	44948.83	87325.87	89246.02	123591.1	44154.81
18	Total Inputs	80315.21	63429.96	105012.45	127843.81	147116.27	52880.75
19	Gross Value Added	19782.22	18519.33	25971.25	42339.12	27841.36	14144.39
20	Depreciation	2018.22	2281.72	2182.22	3411.88	6573.56	1388.19
21	Net Value Added	17764	16237.6	23789.03	38927.24	21267.79	12756.19
22	Net Fixed Capital Formation	5663.09	1469.5	5232.57	5230.38	14358.75	3074.32
23	Gross Fixed Capital Formation	7681.31	3751.22	7414.79	8642.26	20932.32	4462.51
24	Addition in Stock of	3877.82	1136.99	1114.65	7219.07	1791.93	3671.84
	(a) Materials, Fuels etc.	1710.11	745.73	258.16	2924.95	1787.19	1655.47
	(b) Semi Finished Goods	1421.56	113.18	609.88	3106.03	-18.83	2101.7
	(c) Finished Goods	746.15	278.08	246.61	1188.09	23.57	-85.33
25	Gross Capital Formation	11559.13	4888.22	8529.44	15861.33	22724.24	8134.34
26	Income	14903	14345.8	20697.83	35592.75	17877.47	11625.8
27	Profit	7985	8786.34	13799.83	21533.53	7609.45	7785.99

Table -7 (contd.)

Sl No	Characteristics	31	32	33	38	58	Other
1	Number Of Factories	948	2413	799	190	204	6614
2	Factories In Operation	906	2314	782	175	199	6479
3	Fixed Capital	1363.55	7228.17	1398.52	394.7	2741.73	73810.45
4	Physical Working Capital	1119.73	13961.22	1037.98	703.99	699.79	9060.89
5	Working Capital	945.83	8625.66	1308.41	279.82	977.62	-560.44
6	Invested Capital	2483.28	21189.39	2436.49	1098.69	3441.52	82871.37
7	Gross Value Of Addition To Fixed Capital	284.3	1297.67	330.9	204.37	898.36	19437.33
8	Rent Paid For Fixed Assets	45.65	156.95	65.31	6.36	43.8	525.9
9	Outstanding Loan	605.93	10516.16	1140.89	289.28	1347.83	26602.47
10	Interest Paid	131.96	1705.6	147.86	44.51	155.76	3246.63
11	Rent Received For Fixed Assets	19.02	36.3	18.88	1.6	103.01	136.42
12	Interest Received	3.95	72.92	3.87	15.03	6.34	316.98
13	Gross Value Of Plant & Machinery	1082.55	4780.41	500.87	331.38	1994.7	57600.8
14	Value Of Product And By-Product	5081.4	54340.27	4358.61	1362.36	2552.37	42601.88
15	Total Output	6091.52	69510.99	8411.12	2153.04	4849.62	117867.97
16	Fuels Consumed	204.71	549.14	65.52	50.98	99.44	3213.69
17	Materials Consumed	3494.94	46697.44	2963.25	1155.71	2635.8	30007.49
18	Total Inputs	4862.98	63555.36	6031.05	1836.32	3575.13	96942.46
19	Gross Value Added	1228.54	5955.63	2380.07	316.72	1274.49	20925.51
20	Depreciation	164.67	664.48	137.41	40.89	222.09	3712.13
21	Net Value Added	1063.87	5291.15	2242.66	275.83	1052.4	17213.39
22	Net Fixed Capital Formation	78.52	431.71	122.05	81.25	188.97	-104.96
23	Gross Fixed Capital Formation	243.19	1096.2	259.45	122.14	411.07	3607.19
24	Addition in Stock of	40.08	912.54	86.88	71.4	146.22	71.49
	(a) Materials, Fuels etc.	14.09	-406.34	35.7	-12.94	128.91	-104.12
	(b) Semi Finished Goods	46.55	-50.38	34.32	0.41	0.76	23.8
	(c) Finished Goods	-20.56	1369.26	16.86	83.93	16.55	151.81
25	Gross Capital Formation	283.27	2008.74	346.34	193.54	557.29	3678.68
26	Income	886.26	3428.6	2029.5	224.96	852.84	13440.84
27	Profit	273.04	721.58	1256.17	169.5	221.35	9907.86

Table -8
Estimate of (i) employment, (ii) mandays employed and (iii) emoluments paid in the factory sector by their type for each 2-digit industry division (NIC-2008)

	Characteristics	All	01	08	10	11	12
A	No. Of Persons Engaged	11327485	106798	5423	1439618	123898	452026
1	Workers	8776745	87381	4867	1133327	94368	429627
1.1	Directly Employed	5977328	50086	672	822602	49541	126588
	Men	4779073	32961	653	554679	43553	62408
	Women	1198255	17125	19	267923	5988	64180
1.2	Employed Through Contractors	2799417	37295	4195	310725	44827	303039
2	Employees Other Than Workers	2476049	17274	496	289723	29038	19752
2.1	Supervisory and Managerial	1086849	5588	217	100651	11338	6966
2.2	Other Employees	1389200	11686	279	189072	17700	12786
3	Unpaid family members/proprietor etc.	74692	2144	59	16569	492	2647
B	Total Man days Employed (in '000)	3386622	20594	1174	406942	38674	132639
C	Wages and Salaries Including						
	Employers' Contribution	15233620	31842	2379	1137316	164020	147935
1	Wages and Salary Including Bonus	12944123	30493	2119	999448	142055	128970
1.1	Wages and Salary	12262100	29783	2067	939855	135186	120886
1.1.1	Workers	5977184	21303	1444	527390	65080	96560
1.1.2	Supervisory & Managerial	4344878	4289	415	231652	46033	15986
1.1.3	Other Employees	1940038	4191	208	180813	24073	8340
1.2	Bonus to All Staff	682023	710	52	59593	6869	8084
2	Employers' Contribution	2289497	1349	260	137868	21965	18965

Table -8 (contd.)

	Characteristics	13	14	15	16	17	18
A	No. Of Persons Engaged	1400207	797878	250984	68361	231415	129368
1	Workers	1193635	679807	212812	51951	182788	85840
1.1	Directly Employed	1011886	591103	183192	39276	129691	73704
	Men	814195	280409	122591	35206	115489	67278
	Women	197691	310694	60601	4070	14202	6426
1.2	Employed Through Contractors	181749	88704	29620	12675	53097	12136
2	Employees Other Than Workers	200107	115506	36963	14616	46488	42056
2.1	Supervisory and Managerial	94558	52007	16221	6983	21876	13478
2.2	Other Employees	105549	63499	20742	7633	24612	28578
3	Unpaid family members/proprietor etc.	6465	2566	1209	1794	2139	1472
B	Total Man days Employed (in '000)	453008	237118	74173	19485	73637	40568
C	Wages and Salaries Including						
	Employers' Contribution	1192592	660125	188353	53054	258405	190713
1	Wages and Salary Including Bonus	1038055	584733	164995	47905	221808	162996
1.1	Wages and Salary	980872	548766	153705	45518	209515	155680
1.1.1	Workers	653686	345218	96403	25251	120034	61878
1.1.2	Supervisory & Managerial	222146	137074	39952	13592	61064	50112
1.1.3	Other Employees	105040	66474	17350	6675	28417	43690
1.2	Bonus to All Staff	57182	35966	11290	2387	12294	7315
2	Employers' Contribution	154537	75392	23358	5149	36597	27717

Table -8 (contd.)

	Characteristics	19	20	21	22	23	24
A	No. Of Persons Engaged	113167	581053	379083	430981	779786	898554
1	Workers	90161	420646	237966	331837	637044	696010
1.1	Directly Employed	39429	287079	142566	238709	298748	421027
	Men	37706	219064	122667	216733	272042	412960
	Women	1723	68015	19899	21976	26706	8067
1.2	Employed Through Contractors	50732	133568	95400	93129	338295	274983
2	Employees Other Than Workers	22434	157291	140447	95938	132008	199430
2.1	Supervisory and Managerial	12284	80891	59236	45614	60703	110176
2.2	Other Employees	10150	76400	81211	50324	71305	89254
3	Unpaid family members/proprietor etc.	572	3116	669	3205	10735	3115
B	Total Man days Employed (in '000)	37873	183859	118645	133130	213498	295163
C	Wages and Salaries Including Employers' Contribution	422070	1270503	744372	516817	740221	1927301
1	Wages and Salary Including Bonus	307981	1035851	643645	441576	637792	1586699
1.1	Wages and Salary	296484	986140	612084	412387	606853	1533943
1.1.1	Workers	153998	361834	195295	206785	323833	756728
1.1.2	Supervisory & Managerial	114627	432548	279647	146869	197332	598169
1.1.3	Other Employees	27859	191758	137142	58733	85688	179046
1.2	Bonus to All Staff	11497	49711	31562	29188	30939	52756
2	Employers' Contribution	114089	234652	100727	75241	102429	340602

Table -8 (contd.)

	Characteristics	25	26	27	28	29	30
A	No. Of Persons Engaged	508057	209332	381336	714174	509741	219133
1	Workers	397186	141444	277081	407330	392964	174124
1.1	Directly Employed	235897	98296	183231	282217	243705	101739
	Men	228484	75520	164138	275988	230786	100134
	Women	7413	22776	19093	6229	12919	1605
1.2	Employed Through Contractors	161289	43148	93850	125113	149259	72385
2	Employees Other Than Workers	106132	67388	102696	303766	115697	44262
2.1	Supervisory and Managerial	51891	30182	51348	101858	62344	22191
2.2	Other Employees	54241	37206	51348	201908	53353	22071
3	Unpaid family members/proprietor etc.	4739	501	1560	3078	1081	747
B	Total Man days Employed (in '000)	152439	62510	115540	178343	152639	65892
C	Wages and Salaries Including						
	Employers' Contribution	691800	555947	689800	1405922	1026802	383981
1	Wages and Salary Including Bonus	614710	482361	587367	1189157	848696	307792
1.1	Wages and Salary	587053	434385	557221	1120707	802572	291195
1.1.1	Workers	294832	133192	228981	444713	391755	153734
1.1.2	Supervisory & Managerial	218428	172136	247713	454233	314799	99914
1.1.3	Other Employees	73793	129057	80527	221761	96018	37547
1.2	Bonus to All Staff	27656	47976	30146	68449	46123	16597
2	Employers' Contribution	77090	73586	102433	216765	178106	76189

Table -8 (contd.)

	Characteristics	31	32	33	38	58	Others
A	No. Of Persons Engaged	40371	225834	33911	7648	20385	268961
1	Workers	31073	174036	23148	6269	9232	172792
1.1	Directly Employed	22498	144172	15375	4764	7729	131808
	Men	21669	114885	14975	4186	7628	130085
	Women	829	29287	400	578	101	1723
1.2	Employed Through Contractors	8576	29864	7773	1504	1503	40985
2	Employees Other Than Workers	8880	50694	10359	1318	11117	94176
2.1	Supervisory and Managerial	3772	20321	4938	526	3215	35478
2.2	Other Employees	5108	30373	5421	792	7902	58698
3	Unpaid family members/proprietor etc.	418	1104	404	61	36	1997
B	Total Man days Employed (in '000)	12257	65910	10021	1916	6953	82026
C	Wages and Salaries Including						
	Employers' Contribution	61322	270702	77333	5546	63148	353302
1	Wages and Salary Including Bonus	54589	241451	67525	4998	55066	313293
1.1	Wages and Salary	52799	230048	63916	4672	51068	296737
1.1.1	Workers	24114	126315	29654	2898	10983	123294
1.1.2	Supervisory & Managerial	19802	68725	22649	1183	23172	110615
1.1.3	Other Employees	8883	35008	11613	591	16913	62828
1.2	Bonus to All Staff	1789	11403	3609	326	3999	16555
2	Employers' Contribution	6733	29251	9808	548	8082	40009

Table 9 :
Annual Series For Principal Characteristics of all Industries
(Value Figures in Rs. Lakhs, Mandays in Thousand and Others in Number)

	Characteristics	1981-82	1982-83	1983-84	1984-85
	1	2	3	4	5
1	Number Of Factories	105037	93166	96706	100328
2	Fixed Capital	3470259	4100600	4860554	5484211
3	Working Capital	1505488	1631988	1850402	2232323
4	Invested Capital	5399127	6299198	7249434	8050202
5	Outstanding Loans	3349934	3852135	4811656	5247519
6	Number Of Workers	6105622	6312673	6158837	6091409
7	Mandays-Workers	1686248	1791856	1851719	1855498
8	Number Of Employees	7777868	8009792	7824121	7871712
9	Mandays-Employees	2154214	2337524	2383165	2406722
10	Total Person Engaged	7894254	8166168	7994406	7981370
11	Wages To Workers	439417	514828	592078	675730
12	Total Emoluments	677753	804609	921825	1066021
13	Old Age Benefits	50425	57412	67713	78487
14	Social Security Benefits	13832	17531	17566	19607
15	Other Benefits	25872	28602	36482	42628
16	Fuels Consumed	524730	649889	784560	918471
17	Material Consumed	4354078	5041668	5533507	6419685
18	Total Inputs	5694900	6709650	7001692	8062437
19	Products	6539253	7676689	8802296	9915008
20	Value Of Output	7363046	8623768	9353741	10556600
21	Depreciation	216889	246754	338331	405448
22	Net Value Added	1451257	1667368	2013718	2088716
23	Rent Paid	16881	19706	22460	25852
24	Interest Paid	326918	407611	469881	533774
25	Net Income	1107458	1240051	1521377	1529089
26	Net Fixed Capital Formation	507756	539614	621321	622010
27	Gross Fixed Capital Formation	724646	786368	959652	1027458
28	Addition In Stock Of				
	(i)Material,Fuels Etc.	134693	56659	76564	116086
	(ii)Semi Finished Goods	42637	41053	45241	51077
	(iii)Finished Goods	104065	151451	38385	-17935
	(iv)Total	281401	249163	160190	149228
29	Gross Capital Formation	1006054	1035532	1119842	1176687
30	Profits	339576	331897	477971	322345

Table -9 (contd.)

	Characteristics	1985-86	1986-87	1987-88	1988-89
	1	6	7	8	9
1	Number Of Factories	101016	97957	102596	104077
2	Fixed Capital	6008524	6723094	7847463	8912356
3	Working Capital	2379864	2180329	2755102	2724616
4	Invested Capital	8811181	9769297	11393383	13297905
5	Outstanding Loans	6207203	7009633	7943693	6546478
6	Number Of Workers	5819169	5806866	6061786	6026328
7	Mandays-Workers	1795111	1789947	1871201	1851385
8	Number Of Employees	7471515	7441879	7785580	7743344
9	Mandays-Employees	2298690	2325830	2425810	2400364
10	Total Person Engaged	7584007	7548755	7903826	7858281
11	Wages To Workers	709209	785043	893370	1029223
12	Total Emoluments	1108113	1229918	1408105	1572832
13	Old Age Benefits	86622	97271	109067	156623*
14	Social Security Benefits	24747	28534	30863	114538*
15	Other Benefits	41751	43008	49227	
16	Fuels Consumed	1099034	1205704	1432489	1418122
17	Material Consumed	7443229	8110653	9394302	11496681
18	Total Inputs	9248839	10284440	11938728	14258830
19	Products	11272340	12461540	14449855	17308978
20	Value Of Output	11945705	13304352	15397307	18434878
21	Depreciation	440053	464687	625220	712568
22	Net Value Added	2256813	2555224	2833360	3463480
23	Rent Paid	32566	35942	44751	59620
24	Interest Paid	614809	708763	862606	969355
25	Net Income	1609438	1810520	1926003	2434505
26	Net Fixed Capital Formation	643242	650461	811991	806184
27	Gross Fixed Capital Formation	1083295	1115148	1437211	1518752
28	Addition In Stock Of				
	(i)Material, Fuels Etc.	126457	108627	284960	541945
	(ii)Semi Finished Goods	43134	24492	41782	107758
	(iii)Finished Goods	124124	135469	119144	276387
	(iv)Total	293715	268588	445886	926090
29	Gross Capital Formation	1377010	1383736	1883097	2444842
30	Profits	348205	411789	328741	590512

Table -9 (contd.)

	Characteristics	1989-90	1990-91	1991-92	1992-93
	1	10	11	12	13
1	Number Of Factories	107992	110179	112286	119494
2	Fixed Capital	10692778	13364756	15190240	19287139
3	Working Capital	3386365	4252036	4446816	6249011
4	Invested Capital	15914036	19491285	22123418	27772858
5	Outstanding Loans	8430536	10456557	11018723	16128731
6	Number Of Workers	6326541	6307143	6269039	6649310
7	Mondays-Workers	1962805	1949506	1935646	2040458
8	Number Of Employees	8142550	8162504	8193590	8704947
9	Mondays-Employees	2549238	2542346	2557384	2715117
10	Total Person Engaged	8256712	8279403	8319563	8835952
11	Wages To Workers	1179567	1319205	1358263	1683112
12	Total Emoluments	1840888	2058633	2097048	2756026
13	Provident & Other Funds	193407	216438	236399	284256
14	Workmen & Staff Welfare Expense	131946	160118	185441	228257
15	Fuels Consumed	1789759	2089975	2405611	3107273
16	Material Consumed	14407490	16694319	18540808	22369361
17	Total Inputs	17871549	20898600	23302799	28294279
18	Products And By- Products	21580473	25275671	27960785	34224991
19	Value Of Output	23004199	27056353	29919581	36861377
20	Depreciation	866369	1006294	1134080	1442279
21	Net Value Added	4266281	5151459	5482702	7124819
22	Rent Paid	72808	88474	119117	140144
23	Interest Paid	1213680	1488850	1881190	2262427
24	Net Income	2979793	3574136	3482395	4722248
25	Net Fixed Capital Formation	1150248	1422965	1926934	2161825
26	Gross Fixed Capital Formation	2016617	2429259	3061014	3604104
27	Addition In Stock Of				
28	(i)Material, Fuels Etc.	408877	400620	274343	1210489
	(ii)Semi Finished Goods	107467	118404	142502	151052
	(iii)Finished Goods	187941	307620	366595	679089
	(iv)Total	704286	826643	783440	2040630
	Gross Capital Formation	2720902	3255902	3844455	5644734
29	Profits	813552	1138947	963507	1453708

Table -9 (contd.)

	Characteristics	1993-94	1994-95	1995-96	1996-97	1997-98
	1	14	15	16	17	18
1	Number Of Factories	121594	123010	134571	132814	136012
2	Fixed Capital	22441333	27764512	34846773	38004439	42308227
3	Working Capital	8710857	8729632	10766313	17165931	15461658
4	Invested Capital	32054715	38753459	48996925	52215413	57682603
5	Outstanding Loans	16271340	20637103	24693365	25960884	32460512
6	Number Of Workers	6632323	6970116	7632297	7208143	7652254
7	Mondays-Workers	2045434	2163012	2393812	2303625	N.A
8	Number Of Employees	8707909	9102407	10044697	9448643	9997573
9	Mondays-Employees	2726927	2854829	3196414	3037414	N.A
10	Total Person Engaged	8837716	9227097	10222169	9536282	10073485
11	Wages To Workers	1759741	2201946	2797035	2655459	2978167
12	Total Emoluments	2863967	3534151	4511605	4640358	5237112
13	Provident & Other Funds	337756	377664	471214	537849	973758
14	Workmen & Staff Welfare Expense	254955	306388	575882	409225	N.A
15	Fuels Consumed	3372470	4039065	4850854	5464718	6058270
16	Material Consumed	25482640	31167489	41037867	40820342	45842264
17	Total Inputs	32085518	39079472	50749118	55691484	63809899
18	Products And By- Products	39295990	48041810	62112876	64506637	71411682
19	Value Of Output	42574425	51798701	67051423	74180838	83633644
20	Depreciation	1645508	1867530	2362586	2753467	3179621
21	Net Value Added	8843399	10851699	13939719	15735887	16644124
22	Rent Paid	181329	234507	387506	426234	418451
23	Interest Paid	2345535	2678240	3588806	3994437	4560700
24	Net Income	6316535	7938952	9963407	9886483	11664973
25	Net Fixed Capital Formation	1076841	4084716	4549401	5246127	4049844
26	Gross Fixed Capital Formation	2722348	5952246	6911987	7993659	7227085
27	Addition In Stock Of					
28	(i)Material, Fuels Etc.	368835	1015813	997418	510717	225865
	(ii)Semi Finished Goods	70186	205142	341036	115897	118595
	(iii)Finished Goods	112695	543698	811985	749995	632195
	(iv)Total	551715	1764653	2150439	1376609	976655
	Gross Capital Formation	3274064	7716898	9062426	9370268	8203739
29	Profits	2859858	3720750	4404706	4197844	5445612

Table -9(contd.)

	characteristics	1998-99	1999-2000	2000-2001	2001-2002	2002-2003
	1	19	20	21	22	23
1	Number Of Factories	131706	131558	131268	128549	127957
2	Fixed Capital	39115145	40186473	39960422	43196013	44475938
3	Working Capital	10274034	10378436	10520839	10040585	10012110
4	Invested Capital	53706813	56663430	57179940	60591285	63747308
5	Outstanding Loans	22820981	25378161	25795392	26921926	26339233
6	Number Of Workers	6364464	6280659	6135238	5957848	6161493
7	Mondays-Workers	N.A	1904067	1858844	1800576	1870226
8	Number Of Employees	8588581	N.A	7917810	7686654	7870529
9	Mondays-Employees	N.A	2482671	2411969	2332893	2397579
10	Total Person Engaged	N.A	8172836	7987780	7750366	7935948
11	Wages To Workers	2482648	2630427	2767074	2743824	2968905
12	Total Emoluments	4462585	4784351	5071873	5105957	5515801
13	Provident & Other Funds	N.A	683228	665095	780680	815297
14	Workmen & Staff Welfare Expense	N.A	455567	448770	458284	503115
15	Fuels Consumed	4625952	5519803	5896802	5972579	6657582
16	Material Consumed	44447997	52516779	56144875	58796122	70077245
17	Total Inputs	61004389	70936465	74855152	77922749	91618549
18	Products And By- Products	68102731	78311715	81847916	84936649	100128587
19	Value Of Output	78377081	89793835	92690185	96245663	113056111
20	Depreciation	2826587	3359929	3472893	3892702	4203558
21	Net Value Added	14546105	15497442	14362141	14430212	17234004
22	Rent Paid	409083	453117	407862	375118	379356
23	Interest Paid	3969283	4387703	4198659	4221788	3835182
24	Net Income	10167739	10656621	9755619	9833306	13019466
25	Net Fixed Capital Formation	4080495	1507954	1215034	3122442	541866
26	Gross Fixed Capital Formation	6907081	4867882	4687927	7015145	4745424
27	Addition In Stock Of					
28	(i)Material, Fuels Etc.	3754	749937	236267	333170	1087077
	(ii)Semi Finished Goods	135366	153976	232012	78730	229669
	(iii)Finished Goods	171599	694739	985274	-39746	335468
	(iv)Total	310719	1598652	1453553	372154	1652214
	Gross Capital Formation	7217800	6466535	6141480	7387299	6397638
29	Profits	4730623	4733475	3569880	3488385	6185254

Table -9 (contd.)

	Characteristics	2003-04	2004-05	2005-06	2006-07	2007-08	2008-09
	1	24	25	26	27	28	29
1	Number Of Factories	129074	136353	140160	144710	146385	155321
2	Fixed Capital	47333140	51306925	60694028	71513139	84513209	105596614
3	Working Capital	11923049	16005396	18446260	28218880	31695306	31123298
4	Invested Capital	67959786	75941770	90157861	107150382	128012553	153517773
5	Outstanding Loans	28977564	33463375	35150737	42858882	45399645	53641948
6	Number Of Workers	6086908	6599298	7136097	7880536	8198110	8776745
7	Man days-Workers	1840986	1995220	2154187	2383707	2477465	2660547
8	Number Of Employees	7803395	8383278	9038523	10252148	10378495	11252793
9	Man days-Employees	2368602	2544598	2739729	3034322	3144881	3386622
10	Total Person Engaged	7870081	8453624	9111680	10328434	10452535	11327485
11	Wages To Workers	3047777	3363505	3766366	4429135	5103023	5977184
12	Total Emoluments	5833675	6440594	7400820	8875099	10544284	12944123
13	Provident & Other Funds	878363	807614	857258	1029960	1106509	1284077
14	Workmen & Staff Welfare Expense	533395	583074	612293	753445	851638	1005420
15	Fuels Consumed	9198216	8585384	9662969	12006706	12956170	15216203
16	Material Consumed	77501526	102434747	120428441	151177096	175288695	206598245
17	Total Inputs	103962329	136294133	154365843	194836758	222295282	266148638
18	Products And By-Products	113574250	144520293	169755185	212863582	247071651	286314842
19	Value Of Output	128740055	167256142	190835548	240854764	277570904	327279786
20	Depreciation	4482349	4971324	5283286	6445480	7116354	8354590
21	Net Value Added	20295377	25990686	31186419	39572526	48159268	52776558
22	Rent Paid	416084	453845	529948	640399	750549	975778
23	Interest Paid	3397229	3245360	3339801	4131128	5148688	6868048
24	Net Income	16482065	22291481	27316670	34800999	42260031	44932732
25	Net Fixed Capital Formation	1271031	2553722	7324388	7987020	10662743	14240111
26	Gross Fixed Capital Formation	5753380	7525046	12607674	14432500	17779098	22594701
27	Addition In Stock Of						
28	(i)Material, Fuels Etc.	1318920	2377486	2178056	2926206	4952720	1974707
	(ii)Semi Finished Goods	130864	642020	853964	927755	1060215	909350
	(iii)Finished Goods	215599	462739	1517008	1646496	2437910	679786
	(iv)Total	1665383	3482245	4549027	5500458	8450845	3563843
	Gross Capital Formation	7418762	11007290	17156701	19932958	26229942	26158544
29	Profits	9236632	14460199	18446298	24142496	29757600	29699112

Table 10
Principal Characteristics By Major States in ASI 2008-09
(Arranged in Descending Order of Net Value Added)
(Value Figures in Rs. Lakhs & Others in Numbers)

SI No	States	Factories	Fixed Capital	Productive Capital	Invested Capital	Workers
	1	2	3	4	5	6
1	Maharashtra	20450	17901787	22829428	26109467	1034201
2	Gujarat	14863	17236698	22905355	24691131	871459
3	Tamil Nadu	8451	8669455	7934054	11558732	598070
4	Karnataka	26122	9778762	10677243	14699277	1456155
5	Andhra Pradesh	16903	7439952	9703792	10960697	909828
6	Uttar Pradesh	1907	2189841	3310161	3469272	172861
7	Jharkhand	10935	6267696	10280773	9423178	574874
8	Haryana	4450	3706457	4576852	6133423	377322
9	Chattisgarh	6352	3469297	4320087	4663623	275950
10	Madhya Pradesh	1930	5468284	5847911	6680966	174774
11	West Bengal	1919	2818914	5902559	3801782	126890
12	Punjab	6260	4137348	5940658	6196315	449887
13	Orissa	3345	2820091	3725613	4036384	202428
14	Rajasthan	1846	3057109	3555204	3992048	122524
15	Himachal Pradesh	1294	2189156	2977150	2874252	84497
16	Uttaranchal	10065	2648036	3366691	4612258	431568
17	Daman& Diu	1151	1307315	1766781	1975963	71327
18	Kerala	5868	1189335	1461807	1928079	331043
19	Dadra& Nagar Haveli	519	526496	764899	949345	40545
20	Goa	1443	476728	1150869	865770	69038
21	Delhi	3026	312873	641588	740846	87552
22	Assam	649	243669	460448	398911	45033
23	Jammu& Kashmir	1775	303254	450326	584884	62864
24	Puducherry	2211	940427	1276381	1361928	126338
25	Bihar	675	317107	565729	538248	39356
26	Meghalaya	95	60715	136232	88570	4571
27	Chandigarh(U.T.)	278	69003	110925	111002	7068
28	Tripura	363	41808	59451	56325	23643
29	Nagaland	91	2047	6516	6107	2468
30	Andaman& N. Island	72	1367	2478	2365	2313
31	Manipur	12	5586	11948	6623	299
	All India	155321	105596614	136719912	153517773	8776745

Table -10 (contd.)

Sl No	States	Total Persons Engaged	Wages to workers	Total Emoluments	Total Input	Gross Output
	1	7	8	9	10	11
1	Maharashtra	1491931	972674	2588401	47256822	60017352
2	Gujarat	1125543	593380	1303885	43332420	50808787
3	Tamil Nadu	770133	425350	958062	17704363	22581276
4	Karnataka	1774019	850633	1624606	25196704	30080195
5	Andhra Pradesh	1093554	487449	889405	17165109	21240271
6	Uttar Pradesh	229727	179307	454569	5294910	8292360
7	Jharkhand	738644	359075	797971	17096758	20046266
8	Haryana	607527	273749	631186	12017193	14433596
9	Chattisgarh	351351	160873	336099	7118715	9066470
10	Madhya Pradesh	213192	173653	326234	5033763	6953247
11	West Bengal	172044	91071	309200	5769044	7640548
12	Punjab	549852	343201	569983	12236885	14179648
13	Orissa	273332	144693	312612	7340407	9040202
14	Rajasthan	163625	171027	350605	4261768	5910751
15	Himachal Pradesh	110242	51202	133852	2763168	4227948
16	Uttaranchal	544776	231594	418187	9065673	10551352
17	Daman& Diu	92557	41403	102818	5604668	6496541
18	Kerala	381558	157616	269263	6208382	7090489
19	Dadra& Nagar Haveli	53107	36531	77100	2209806	2752579
20	Goa	88513	34970	81241	2547721	3031277
21	Delhi	126816	52452	138943	2365211	2747594
22	Assam	54581	21500	42203	1009909	1349375
23	Jammu& Kashmir	73659	29038	44472	2605831	2953967
24	Puducherry	149256	54440	97008	3297786	3676790
25	Bihar	49254	25369	57017	1126021	1455756
26	Meghalaya	5567	3144	5252	132707	192159
27	Chandigarh(U.T.)	11142	5989	15717	303128	352625
28	Tripura	26089	4474	6447	54859	75598
29	Nagaland	2877	483	678	9842	12806
30	Andaman& N. Island	2654	609	756	5350	6706
31	Manipur	362	235	353	13713	15254
	All India	11327485	5977184	12944123	266148638	327279786

Table -10 (contd.)

Sl No	States	Depreciation	Net Value Added	Rent Paid	Interest Paid
	1	12	13	14	15
1	Maharashtra	1472731	11287800	193238	1392024
2	Gujarat	1434645	6041722	80307	742020
3	Tamil Nadu	623662	4253250	93060	374519
4	Karnataka	912141	3971350	109988	851412
5	Andhra Pradesh	528078	3547084	66982	500999
6	Uttar Pradesh	154164	2843285	43024	129990
7	Jharkhand	535619	2413888	52408	412335
8	Haryana	381016	2035386	80122	324107
9	Chattisgarh	259319	1688436	20852	208356
10	Madhya Pradesh	252125	1667360	16013	282396
11	West Bengal	210138	1661367	39087	153294
12	Punjab	282784	1659980	30102	300859
13	Orissa	197672	1502123	21337	175711
14	Rajasthan	218983	1430000	6706	144452
15	Himachal Pradesh	131543	1333237	8088	91853
16	Uttaranchal	228839	1256840	27762	318403
17	Daman& Diu	113411	778462	7110	114524
18	Kerala	111595	770511	11756	84225
19	Dadra& Nagar Haveli	52609	490164	13400	32508
20	Goa	43796	439760	16860	52002
21	Delhi	34426	347958	21824	51895
22	Assam	18707	320759	1200	24634
23	Jammu& Kashmir	29762	318374	2278	12971
24	Puducherry	77614	301389	4035	46348
25	Bihar	30576	299159	4318	26740
26	Meghalaya	7100	52352	2032	3937
27	Chandigarh(U.T.)	5347	44150	1338	12284
28	Tripura	5224	15515	446	2255
29	Nagaland	140	2823	49	235
30	Andaman& N. Island	113	1243	45	77
31	Manipur	712	830	11	683
	All India	8354590	52776558	975778	6868048

Table 11
Principal Characteristics by Rural - Urban Break-up in ASI 2008-09
(Value Figures in Rs. Lakhs & Others in Number)

Sector	Factories	Fixed Capital	Productive Capital	Invested Capital	Workers	Total Persons Engaged	Wages to Workers
Rural	65212	63847397	75188696	88538750	4153950	5320084	2517618
Urban	90109	41749217	61531216	64979023	4622795	6007401	3459566
Total	155321	105596614	136719912	153517773	8776745	11327485	5977184
Sector	Total Emoluments	Total Input	Gross Output	Depreciation	Net Value Added	Rent Paid	Interest Paid
Rural	5329046	131536609	165034985	4858174	28640202	473291	3774139
Urban	7615078	134612028	162244800	3496416	24136356	502486	3093908
Total	12944123	266148638	327279786	8354590	52776558	975778	6868048

Table 12
Principal Characteristics by Type of Organisation in ASI 2008-09
(Value Figures in Rs. Lakhs & Others in numbers)

SI No	Type of Organisation	Factories	Fixed Capital	Productive Capital	Invested Capital
1	Individual Proprietorship	42868	1414080	2403946	2704124
2	Joint Family(HUF)	1575	73564	151031	142687
3	Partnership	49225	3207263	6135425	6761692
4	Public limited company	15230	71157571	88124922	97953294
5	Private limited company	42205	22035826	30852454	34243878
6	Govt Dept. Enterprises	306	1106837	1303293	1282047
7	Public Corporation	347	3988935	4447918	5417400
8	Corporate	58088	98289169	124728587	138896619
9	Khadi & Village Industry	108	4672	5779	12588
10	Handloom Industry	14	7542	8174	10309
11	11. Co-operative Society	1414	1370525	1476928	2898057
12	12.Others (Incl MR)	2029	1229799	1810043	2091696
	Total	155321	105596614	136719912	153517773

Table 12(Contd..)

SI No	Type of Organisation	Workers	Total Persons Engaged	Wages to Workers
1	Individual Proprietorship	933873	1119560	336815
2	Joint Family(HUF)	36925	45769	13476
3	Partnership	1577453	1929388	645567
4	Public limited company	3044623	3980313	2796290
5	Private limited company	2787386	3720423	1668672
6	Govt Dept. Enterprises	23210	32652	31640
7	Public Corporation	113698	153762	274867
8	Corporate Sector(4+5+6+7)	5968917	7887150	4771469
9	Khadi & Village Industry	4462	5400	1652
10	Handloom Industry	1274	1707	964
11	11. Co-operative Society	166907	229083	118083
12	12.Others (Incl MR)	86934	109427	89156
	Total	8776745	11327485	5977184

Table 12(Contd..)

SI No	Type of Organisation	Total Emoluments	Total input	Gross Output
1	Individual Proprietorship	492207	7631665	9067045
2	Joint family(HUF)	22389	414565	478855
3	Partnership	1080200	21198853	24636767
4	Public limited company	6424278	145851386	180305807
5	Private limited company	3898284	66742154	81331624
6	Govt Dept. Enterprises	61690	874919	1173484
7	Public Corporation	549823	14104044	19544276
8	Corporate Sector(4+5+6+7)	10934075	227572503	282355191
9	Khadi & Village Industry	2470	31219	35988
10	Handloom Industry	2384	8003	13559
11	Co-operative Society	238005	4795898	5428322
12	Others (Incl NR)	172394	4495931	5264059
	Total	12944123	266148638	327279786

Table 12(Contd..)

SI No	Type of Organisation	Depreciation	Net Value Added	Rent Paid	Interest Paid
1	Individual Proprietorship	161398	1273981	27422	178508
2	Joint family(HUF)	8599	55691	1191	9504
3	Partnership	419614	3018300	66832	514388
4	Public limited company	5324142	29130280	474186	3794590
5	Private limited company	1949098	12640372	371510	1856075
6	Govt Dept. Enterprises	46066	252499	2829	45922
7	Public Corporation	244029	5196203	14289	188050
8	Corporate Sector(4+5+6+7)	7563335	47219354	862814	5884637
9	Khadi & Village Industry	389	4379	82	376
10	Handloom Industry	565	4991	70	376
11	Co-operative Society	115036	517389	8511	213609
12	Others (Incl NR)	85653	682475	8855	66651
	Total	8354590	52776558	975778	6868048