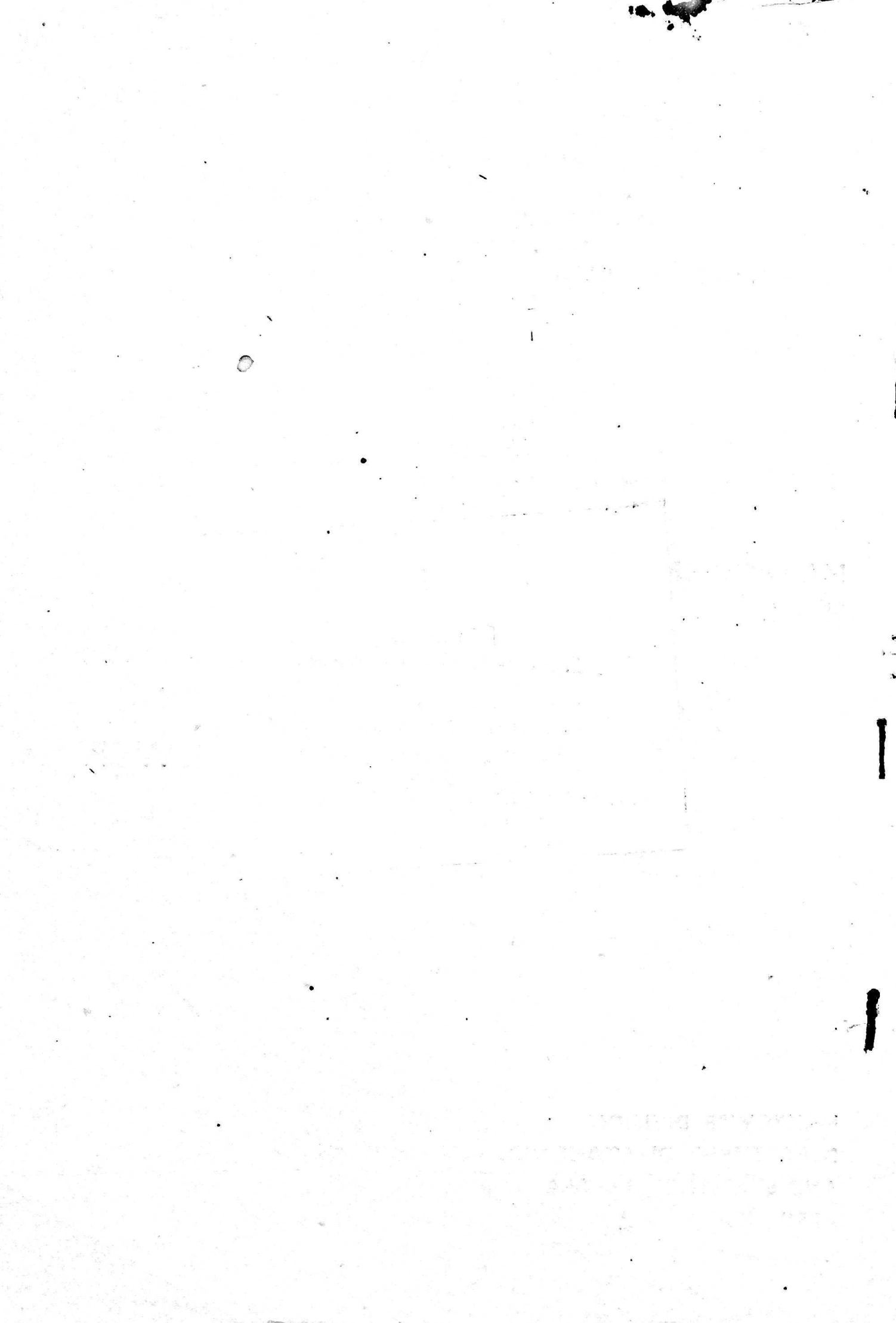


GOVERNMENT OF KERALA

NO. 47

REPORT ON  
INDEX OF INDUSTRIAL PRODUCTION  
FOR THE QUARTERS ENDED  
July, SEPT, DEC. 1983, & MARCH '84  
AND THE ANNUAL REPORT  
FOR 1983-84

DEPARTMENT OF ECONOMICS  
AND STATISTICS, KERALA



GOVERNMENT OF KERALA  
REPORT ON  
INDEX OF INDUSTRIAL PRODUCTION  
(Base : 1970 = 100)

FOR THE QUARTERS ENDED  
30-6-1983, 30-9-1983, 31-12-83,  
31-3-1984 & THE ANNUAL REPORT  
FOR 1983-84.

DEPARTMENT OF ECONOMICS & STATISTICS  
KERALA  
TRIVANDRUM  
JULY - 1985



A BRIEF NOTE ON THE INDEX OF INDUSTRIAL PRODUCTION FOR THE  
QUARTERS ENDED 30-6-83, 30-9-83, 31-12-83, 31-3-84  
AND THE ANNUAL REPORT FOR 1983-84

-----

Introduction:

Index of Industrial Production is a measure of the change in production in the industrial sector over a period of time. It is one of the indicators of the developments in the industrial sector. The index will be useful for the purpose of studying the trend in industrial production over time for inter-industry comparisons and for comparison with the industrial developments in other States and Country as a whole. The Department of Economics and Statistics, Kerala has been preparing the indices of Industrial Production for Kerala State from the Fifth Five Year Plan period onwards.

Coverage:

The present index covers the manufacturing and Electricity sectors in the State. Under 'Manufacturing', the index covers the industrial units included in the census part of the Annual Survey of Industries (A.S.I), that is (a) those registered factories employing 50 or more persons and using power and (b) those employing 100 or more persons not using power. The coverage of index is limited to the census sector industrial units as this sector accounted for nearly 90% of the value added by manufacture. Except in the case of four industries, cashewnut processing, saw mills, Tea Processing and Tile Manufacturing data from all the units covered by the A.S.I. are used for the computation of the index.

The present issue covers the indices of industrial production for the quarters ending June 1983, September 1983, December 1983, March 1984 and the annual index for 1983-84 with base 1970=100. The general index and the constituent group indices for the four quarters at 2 digit level of National Industrial Classification (N.I.C.) has been indicated in Table I. Table II depicts the indices at 3 digit level. The quarterly indices for the respective period for the year 1982-'83 are also furnished for the purpose of a comparative study. Along with annual indices for 1983-84, the annual indices for 1982-83 are also included in this report.

The general index revealed a falling trend during the year under review, viz., 1983-84. It stood at 139.06 as against 158.59 during the year 1982-83 which is lower by 19.53 points or 12.31%. The decline in the general index was mainly attributed to the down fall in production reported in different major industry groups such as manufacture of food products, cotton textiles, non-metallic mineral products, basic metal and alloy industries, Electrical Machinery, other Manufacturing industries and Electricity.



This was, however, counter balanced, to some extent by increased production s in some other major industry groups. Out of 16 major commodity groups only 6 groups evinced improvement in the level of production. The highest level of increase during the year under report was seen in the case of manufacturing of wool, silk, synthetic fibres etc. followed by manufacture of paper & paper products, manufacture of textile production, manufacture of metal products and parts except machinery, manufacture of transport equipment and parts and lastly the manufacture of chemical and chemical products.

It is evident from the tables, the general index for the quarter ending June 1983, showed an abnormal decrease when compared to the same period in the previous year. This fall of general index from 174.12 for the quarter ending June 1982 to 85.70 for the quarter ending June 1983 was mainly due to the powercut imposed by the Kerala State Electricity Board during the period.

Group Indices:

This decline in 1983-84 observed in the case of industries at two digit level and 3 digit level of National Industrial Classification was mainly attributed to the powercut; closure of many industrial units due to non-availability of raw materials, seasonal variations, lock-outs and strikes.

---





INDEX OF INDUSTRIAL PRODUCTION

TABLE No. I

(Base - 1970 = 100)

| Industrial Code | Major Group | Items  | List for the quarter ending |           |          |         |            |         |          |         |            |         |         | ANNUAL  |         |
|-----------------|-------------|--|-----------------------------|-----------|----------|---------|------------|---------|----------|---------|------------|---------|---------|---------|---------|
|                 |             |  | Sept. 1982                  | June 1982 | Sept. 82 | Dec. 82 | March 1983 | June 83 | Sept. 83 | Dec. 83 | March 1984 | 1983-84 | 1982-83 |         |         |
| 2               | ✓           | GENERAL INDEX  | 100.00                      | 174.12    | 167.12   | 165.98  | 127.13     | 85.70   | 129.41   | 169.83  | 171.29     | 139.06  | 158.99  | 1983-84 | 1982-83 |
| 21              |             | Manufacture of food products   | 18.15                       | 135.27    | 174.23   | 188.18  | 111.94     | 112.49  | 120.13   | 132.04  | 148.04     | 128.18  | 152.68  |         |         |
| 23              |             | Manufacture of cotton textiles                                       | 6.46                        | 148.40    | 177.00   | 157.11  | 80.10      | 77.93   | 94.50    | 116.77  | 146.86     | 109.02  | 142.65  |         |         |
| 24              |             | " wood, silk, Synthetic fibre textiles                               | 4.14                        | 28.73     | 27.87    | 28.75   | 20.49      | 23.33   | 25.31    | 111.72  | 116.48     | 69.21   | 26.46   |         |         |
| 26              |             | " Textiles products (including wearing apparel other than foot wear) | 1.57                        | 110.57    | 139.09   | 48.00   | 53.21      | 65.89   | 31.29    | 101.94  | 135.77     | 83.72   | 65.89   |         |         |
| 27.             |             | Manufacture of wood and wood products (fixtures and furniture)       | 4.06                        | 161.52    | 117.18   | 127.82  | 126.13     | 113.77  | 104.65   | 107.42  | 127.50     | 113.36  | 117.87  |         |         |
| 28.             |             | " Paper and paper products   | 12.54                       | 46.47     | 44.43    | 47.61   | 37.88      | 52.49   | 90.52    | 97.67   | 82.47      | 80.79   | 45.12   |         |         |
| 30.             |             | " Rubber, Plastic, Petroleum coal products                           | 7.00                        | 157.78    | 195.99   | 204.12  | 192.79     | 185.64  | 170.18   | 172.66  | 169.84     | 174.58  | 186.67  |         |         |
| 31              |             | " Chemical products (except products of petroleum coal)              | 13.50                       | 180.97    | 230.71   | 218.83  | 143.59     | 111.24  | 186.28   | 236.38  | 250.06     | 195.99  | 193.38  |         |         |
| 32              |             | " Non-ferrous metal products   | 3.82                        | 207.33    | 197.63   | 215.23  | 238.24     | 185.95  | 93.97    | 201.64  | 260.43     | 185.50  | 214.61  |         |         |
| 33              |             | " Basic metal and alloys industries                                  | 3.33                        | 176.00    | 165.19   | 149.87  | 95.06      | 60.60   | 66.55    | 84.86   | 111.60     | 80.90   | 146.73  |         |         |

Contd...2/-



1 2 3 4 5 6 7 8 9 10 11 12 13

|     |  |       |        |        |                                  |        |        |        |        |        |        |        |
|-----|--|-------|--------|--------|----------------------------------|--------|--------|--------|--------|--------|--------|--------|
| 34  | Manufacture of metal products and parts except machinery and transport equipments  | 0.59  | 407.64 | 332.46 | 309. <sup>28</sup> <del>46</del> | 509.43 | 311.44 | 379.46 | 424.26 | 409.66 | 381.21 | 339.70 |
| 35  | Manufacture of machinery and machine tools and parts (except electrical machinery) | 0.16  | 32.14  | 35.71  | 39.29                            | 32.14  | 50.00  | 25.00  | 25.00  | 35.71  | 33.93  | 34.82  |
| 36  | Manufacture of electrical machinery apparatus, appliances supplies and parts       | 2.07  | 137.36 | 102.13 | 95.95                            | 133.61 | 50.00  | 84.74  | 86.92  | 63.40  | 71.26  | 117.26 |
| 37  | Manufacture of transport equipments and parts                                      | 0.39  | 57.92  | 38.78  | 120.06                           | 105.09 | 66.55  | 73.10  | 139.41 | 72.31  | 87.84  | 80.47  |
| 38. | Other manufacturing industries   | 0.54  | 95.25  | 82.58  | 97.04                            | 89.33  | 53.61  | 68.95  | 69.96  | 17.83  | 52.59  | 81.05  |
| 40  | Electricity  | 18.56 | 298.72 | 224.13 | 214.62                           | 184.37 | 146.08 | 165.93 | 215.28 | 221.10 | 187.10 | 230.46 |



INDEX OF INDUSTRIAL PRODUCTION

(Base 1970 = 100)

TABLE II

| Dist-<br>rial<br>Code<br>or<br>Group | Item   | Weight | Index for the quarter ending |            |           |            |           |           |           |           |           |             |             |           |  |
|--------------------------------------|--|--------|------------------------------|------------|-----------|------------|-----------|-----------|-----------|-----------|-----------|-------------|-------------|-----------|--|
|                                      |  |        | June<br>82                   | July<br>82 | Aug<br>82 | Sept<br>82 | Oct<br>82 | Nov<br>82 | Dec<br>82 | Jan<br>83 | Feb<br>83 | March<br>83 | April<br>83 | May<br>83 |  |
| 1                                    | 2  | 3      | 4                            | 5          | 6         | 7          | 8         | 9         | 10        | 11        | 12        | 13          | 14          |           |  |
|                                      | GENERAL INDEX  |        | 174.12                       | 167.12     | 165.98    | 127.13     | 85.70     | 129.41    | 169.83    | 179.29    | 139.06    | 158.59      |             |           |  |
| 20-21                                | Manufacture of food products   | 18.15  | 135.57                       | 174.23     | 188.18    | 111.94     | 112.49    | 120.13    | 132.04    | 148.04    | 128.18    | 152.48      |             |           |  |
| 202                                  | Canning, Preservation of fruits and vegetables   | 0.26   | 508.64                       | 161.85     | 17.04     | 88.18      | 146.79    | 76.17     | 51.28     | 168.32    | 110.64    | 143.93      |             |           |  |
| 203                                  | Canning, Preservation & processing of fish curstacco and similar foods                         | 0.98   | 146.74                       | 88.30      | 364.97    | 408.85     | 130.54    | 140.96    | 77.51     | 574.98    | 240.00    | 252.22      |             |           |  |
| 204                                  | Grain Mill products  | 0.03   | 128.28                       | 135.12     | 110.43    | 97.22      | 60.80     | 65.88     | 71.55     | 63.88     | 65.53     | 117.75      |             |           |  |
| 205                                  | Manufacture of refining of Sugar, cocoa, Maida-sari sugar etc. from Sugarcane, palm juice etc. | 0.61   | -                            | 5.95       | 285.51    | 205.66     | -         | 3.82      | 203.26    | 11.51     | 72.86     | 124.28      |             |           |  |
| 210                                  | Manufacture of Hydrogenated oil, Vanaspathi, ghee etc.   | 0.08   | 47.80                        | 18.36      | 42.45     | 79.16      | 47.38     | 44.46     | 41.33     | 272.28    | 101.36    | 46.94       |             |           |  |
| 212                                  | Tea processing   | 5.49   | 273.78                       | 243.879    | 307.49    | 185.89     | 226.72    | 224.84    | 290.24    | 212.87    | 238.66    | 238.66      |             |           |  |
| 213                                  | Coffee Processing  | 0.12   | 14.56                        | 188.05     | 177.01    | 200.87     | 181.21    | 188.34    | 210.23    | 117.42    | 174.30    | 186.87      |             |           |  |
| 214                                  | Cashewnut processing like drying, shelling, roasting, slitting etc.                            | 10.13  | 47.72                        | 150.99     | 92.95     | 27.79      | 47.13     | 61.40     | 34.51     | 59.49     | 50.63     | 79.87       |             |           |  |

(Contd...2/-)



| 1   | 2   | 3           | 4             | 5             | 6             | 7             | 8             | 9             | 10            | 11            | 12            | 13            |
|-----|---|-------------|---------------|---------------|---------------|---------------|---------------|---------------|---------------|---------------|---------------|---------------|
| 217 | Manufacture of Starch   | 0.45        | 417.54        | 297.93        | 491.87        | 341.36        | 280.19        | 301.37        | 467.13        | 585.72        | 408.60        | 387.18        |
| 23  | <u>Manufacture of Cotton Textiles</u>   | <u>6.46</u> | <u>148.40</u> | <u>177.00</u> | <u>157.11</u> | <u>88.10</u>  | <u>77.93</u>  | <u>94.50</u>  | <u>116.77</u> | <u>146.86</u> | <u>109.02</u> | <u>142.65</u> |
| 231 | Cotton spinning, weaving, shrinking, sari pressing mercerising & furnishing of cotton textiles in mills | 6.46        | 148.40        | 177.00        | 157.11        | 88.10         | 77.93         | 94.50         | 116.77        | 146.86        | 109.02        | 142.65        |
| 24  | <u>Manufacture of Wool, Silk &amp; Synthetic fibre textiles</u>   | <u>4.14</u> | <u>28.73</u>  | <u>27.87</u>  | <u>28.75</u>  | <u>20.49</u>  | <u>23.33</u>  | <u>25.31</u>  | <u>111.72</u> | <u>116.48</u> | <u>69.21</u>  | <u>26.46</u>  |
| 247 | Spinning, weaving, & furnishing of other textiles, synthetic fibre, rayons nylon etc.                   | 4.14        | 28.73         | 27.87         | 28.75         | 20.49         | 23.33         | 25.31         | 111.72        | 116.48        | 69.21         | 26.46         |
| 26  | <u>Manufacture of textiles products (including weaving apparel other than foot wear)</u>                | <u>1.57</u> | <u>110.57</u> | <u>49.09</u>  | <u>48.82</u>  | <u>53.21</u>  | <u>65.89</u>  | <u>31.29</u>  | <u>101.94</u> | <u>135.77</u> | <u>83.72</u>  | <u>65.42</u>  |
| 260 | Knitting mills  | 0.02        | 142.45        | 141.69        | 139.73        | 120.33        | 142.35        | 148.42        | 139.87        | 127.71        | 139.59        | 136.05        |
| 260 | Manufacture of Coir products  | 1.55        | 110.16        | 47.90         | 47.65         | 52.35         | 64.90         | 29.78         | 101.46        | 135.87        | 83.00         | 64.52         |
| 27  | <u>Manufacture of wood and wood products - furniture &amp; fixtures</u>                                 | <u>4.00</u> | <u>101.52</u> | <u>113.19</u> | <u>127.82</u> | <u>126.13</u> | <u>113.77</u> | <u>104.65</u> | <u>107.42</u> | <u>127.60</u> | <u>113.36</u> | <u>117.17</u> |
| 270 | Manufacture of Veneers, plywood & their products  | 2.91        | 129.13        | 115.43        | 134.08        | 132.55        | 112.55        | 105.88        | 405.74        | 120.77        | 111.23        | 127.80        |

(Contd.....3/-)





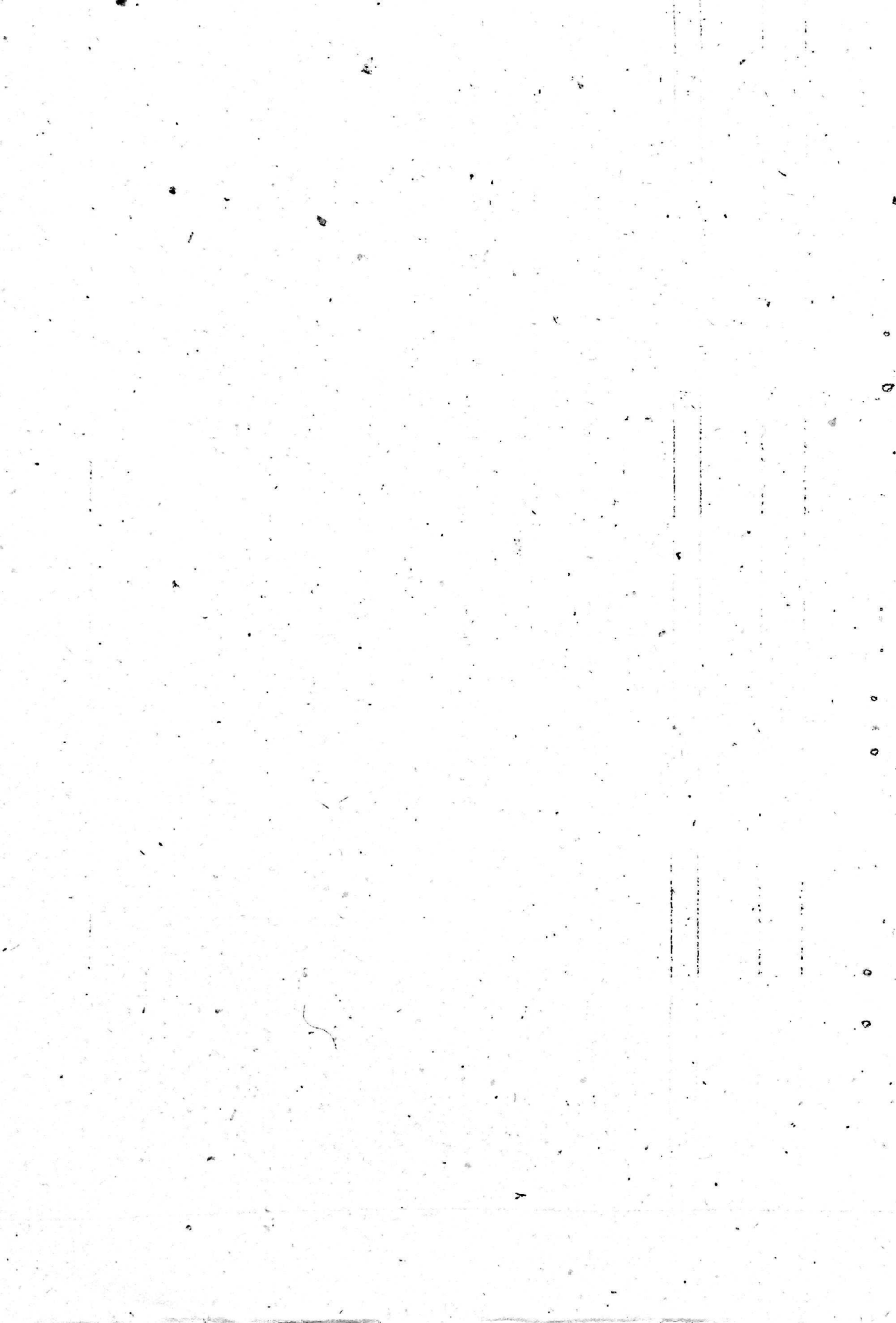
Just-

Index for the quarter ending

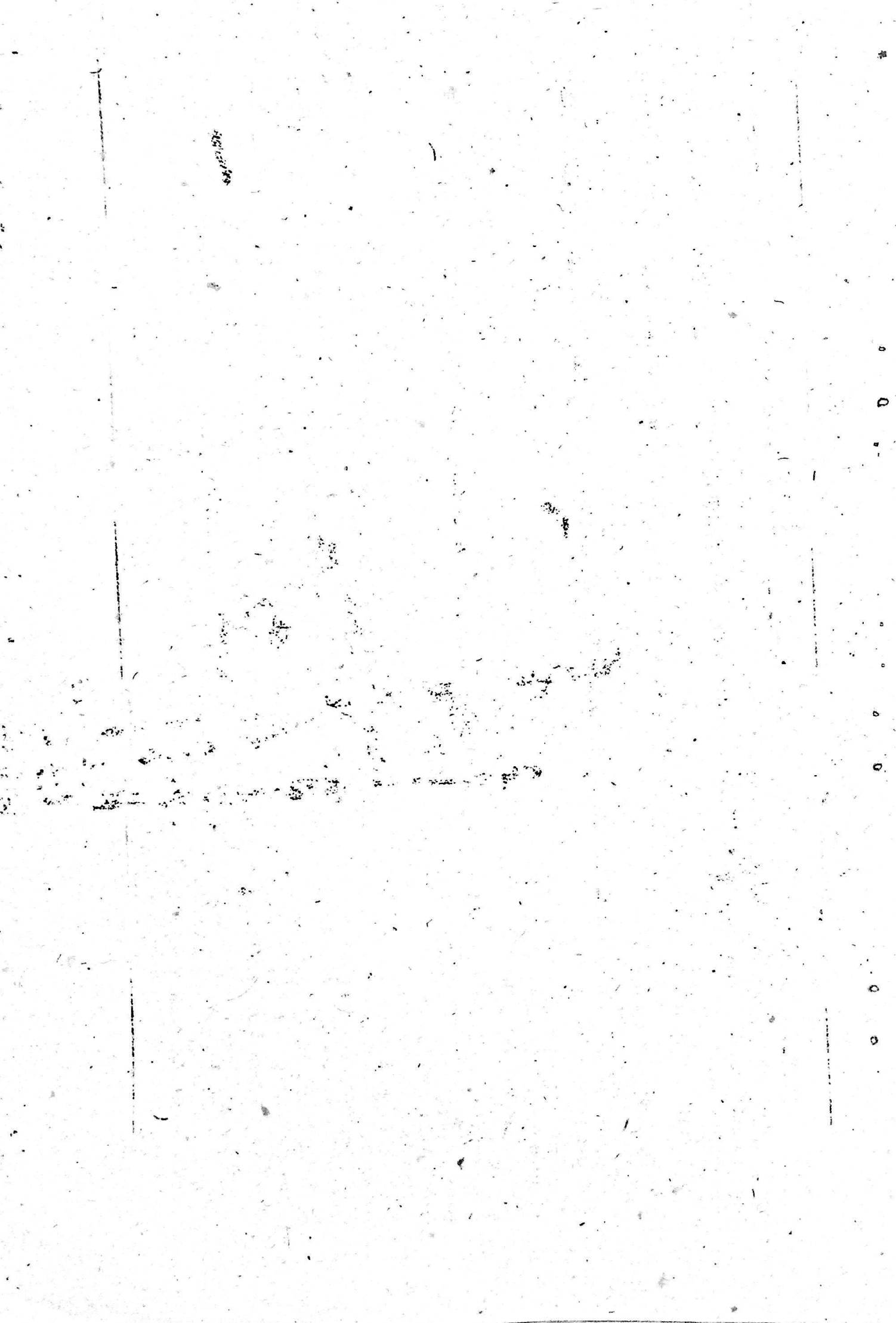
ANNUAL

| Item | June 1982 | Sept. 82 | Dec. 82 | March 1983 | June 83 | Sept. 83 | Dec. 83 | March 1984 | June 84 | Sept. 84 | Dec. 84 | March 1985 | June 85 |
|------|-----------|----------|---------|------------|---------|----------|---------|------------|---------|----------|---------|------------|---------|
| 1    | 34.33     | 98.54    | 89.27   | 85.37      | 113.03  | 100.11   | 102.89  | 131.22     | 111.81  |          |         |            | 13      |
| 10   | 205.61    | 135.13   | 181.99  | 185.43     | 128.29  | 82.89    | 229.00  | 185.19     | 156.34  |          |         |            | 76.88   |
| 20   | 46.47     | 48.43    | 47.61   | 37.98      | 52.49   | 90.52    | 97.67   | 12.47      | 80.79   |          |         |            | 45.12   |
| 30   | 10.36     | 20.42    | 16.71   | 7.16       | 23.61   | 68.46    | 72.26   | 63.16      | 56.87   |          |         |            | 15.66   |
| 40   | 168.60    | 171.45   | 176.52  | 164.46     | 169.29  | 174.15   | 188.35  | 165.82     | 174.40  |          |         |            | 170.26  |
| 50   | 211.12    | 205.33   | 258.79  | 260.32     | 270.60  | 288.46   | 357.37  | 202.14     | 279.64  |          |         |            | 233.89  |
| 60   | 152.78    | 195.99   | 204.12  | 192.79     | 185.64  | 137.34   | 172.66  | 169.84     | 174.58  |          |         |            | 186.67  |
| 70   | 136.52    | 128.43   | 115.59  | 96.86      | 68.75   | 98.04    | 120.72  | 107.54     | 97.76   |          |         |            | 119.35  |
| 80   | 141.05    | 230.53   | 280.72  | 139.39     | 124.57  | 173.42   | 210.95  | 81.38      | 147.58  |          |         |            | 197.92  |

(Contd.../-)



|     | 1   | 2     | 3      | 4      | 5      | 6      | 7      | 8      | 9      | 10     | 11     | 12     | 13 |
|-----|---|-------|--------|--------|--------|--------|--------|--------|--------|--------|--------|--------|----|
| 302 | Manufacture of rubber products (not elsewhere classified)   | 1.04  | 216.38 | 270.25 | 256.86 | 196.61 | 174.69 | 245.96 | 336.87 | 312.76 | 267.57 | 235.03 |    |
| 304 | Petroleum refineries  | 5.54  | 143.12 | 182.38 | 193.18 | 197.36 | 193.95 | 150.01 | 141.53 | 148.95 | 160.61 | 179.01 |    |
| 31  | <u>Manufacture of chemical &amp; chemical products (except petroleum &amp; coal)</u>  | 16.50 | 140.97 | 230.71 | 210.22 | 143.59 | 111.24 | 166.28 | 236.38 | 250.06 | 195.99 | 193.35 |    |
| 310 | Manufacture of basic industrial organic and organic chemical & gases such as acids, alcohols & thin salts, gases like acetylene, oxygen, nitrogen etc.                      | 5.40  | 127.01 | 156.45 | 144.15 | 79.71  | 60.28  | 85.81  | 133.67 | 147.23 | 106.75 | 126.83 |    |
| 311 | Manufacture of fertilizers and pesticides   | 6.25  | 150.84 | 265.64 | 258.36 | 147.02 | 97.90  | 231.33 | 289.67 | 331.82 | 237.68 | 215.47 |    |
| 313 | Manufacture of drugs & medicines  | 0.78  | 487.89 | 579.74 | 455.62 | 386.02 | 432.04 | 507.63 | 828.62 | 786.07 | 638.59 | 477.32 |    |
| 314 | Manufacture of perfumes, cosmetics, lotions, hair dressing, tooth paste, soap in any form, synthetics detergent, shampoos, shaving products, cleaners, toilet preparations. | 4.07  | 179.15 | 208.69 | 209.37 | 176.61 | 137.83 | 188.82 | 177.24 | 158.13 | 165.50 | 193.46 |    |



|  | 2    | 3      | 4      | 5      | 6      | 7      | 8      | 9      | 10     | 11     | 12     | 13     |
|--|------|--------|--------|--------|--------|--------|--------|--------|--------|--------|--------|--------|
| <u>Manufacture of non-metallic mineral products</u>  |      | 3.82   | 207.33 | 197.63 | 215.23 | 238.24 | 185.95 | 93.97  | 201.64 | 260.43 | 185.50 | 214.61 |
| Manf. of structural clay products  | 2.39 | 194.10 | 186.39 | 220.20 | 223.45 | 209.50 | 24.44  | 139.43 | 209.32 | 145.67 | 206.04 |        |
| Manufacture of structural glass & glass products   | 0.25 | 327.05 | 222.13 | 149.82 | 538.84 | 200.78 | 413.31 | 466.72 | 370.87 | 362.92 | 309.46 |        |
| Manf. of China ware & porcelain ware   | 0.36 | 168.44 | 156.17 | 145.42 | 186.49 | 195.42 | 194.48 | 387.06 | 657.78 | 358.68 | 164.13 |        |
| " Cement, Lime & Plaster   | 0.34 | 323.19 | 344.92 | 332.92 | 249.39 | 206.72 | 279.76 | 363.04 | 316.49 | 292.25 | 312.61 |        |
| " miscellaneous non-metal mineral products such as State products abrasives, graphite products, mineral, wood silica products & other non-metallic products not elsewhere classified | 0.48 | 157.68 | 167.31 | 193.13 | 193.13 | 38.83  | 67.00  | 119.91 | 119.91 | 86.41  | 177.81 |        |
| <u>Basic Metal &amp; alloys Industries</u>   |      | 3.33   | 176.80 | 165.19 | 149.87 | 95.06  | 60.60  | 66.55  | 84.86  | 111.60 | 80.90  | 146.73 |
| Iron & Steel industries  | 0.73 | 175.68 | 186.96 | 99.96  | 45.52  | 34.92  | 44.09  | 33.74  | 155.51 | 67.06  | 127.03 |        |
| boundaries, forging  | 0.08 | 899.87 | 707.32 | 986.67 | 668.32 | 200.29 | 423.35 | 441.52 | 425.09 | 372.56 | 815.55 |        |
| Aluminium Manufacturing  | 2.52 | 154.19 | 141.69 | 137.79 | 91.23  | 63.61  | 61.78  | 88.36  | 88.94  | 75.67  | 131.23 |        |

(contd.)









2 3 4 5 6 7 8 9 10 11 12 13

|  |       |        |        |        |        |        |        |        |        |        |        |
|--|-------|--------|--------|--------|--------|--------|--------|--------|--------|--------|--------|
| mf. of electrical machinery, apparatus, appliance, supplies and parts.   | 2.07  | 137.36 | 102.13 | 95.95  | 133.61 | 50.00  | 84.74  | 86.92  | 63.40  | 71.26  | 117.26 |
| mf. of electrical machinery, apparatus & parts (such as electrical motor, generators, transformers, electromagnatic, switches and brakes)  | 1.21  | 144.99 | 106.42 | 82.08  | 161.50 | 58.18  | 101.48 | 80.88  | 51.32  | 72.96  | 123.75 |
| mf. of <del>xxx</del> insulated wire & cables  | 0.55  | 90.69  | 41.41  | 69.59  | 60.01  | 47.02  | 20.12  | 57.69  | 31.35  | 39.06  | 65.43  |
| mf. of electrical apparatus and other parts such as lamps, lbs, tubes, sockets, switches, insulators (except porcelain), inductors, iron, heers, shavers, vacuum cleaners etc. excluding repairing | 0.26  | 137.69 | 182.49 | 190.03 | 159.43 | 39.39  | 170.92 | 212.95 | 200.75 | 156.00 | 167.41 |
| mf. of electrical machinery apparatus, appliance and supplies & parts not elsewhere classified   | 0.05  | 681.90 | 407.76 | 355.17 | 375.00 | 26.72  | 93.10  | 37.93  | 70.69  | 57.11  | 454.96 |
| mf. of Transport equipments and parts  | 0.39  | 57.93  | 38.78  | 120.06 | 105.09 | 66.55  | 73.10  | 139.41 | 72.31  | 87.84  | 80.47  |
| Building & repairing   | 0.26  | 20.00  | -      | 120.00 | 100.00 | 40.00  | 40.00  | 140.00 | 40.00  | 65.00  | 80.00  |
| mf. of bicycle, cycle rickshaw & parts   | 0.13  | 133.79 | 116.35 | 120.18 | 115.28 | 119.65 | 139.30 | 138.22 | 136.93 | 133.52 | 128.40 |
| Manufacturing Industries   | 0.54  | 95.25  | 82.58  | 97.04  | 89.33  | 53.61  | 68.95  | 69.96  | 17.83  | 52.59  | 91.05  |
| mf. of medical, surgical & scientific equipments   | 0.54  | 95.25  | 82.58  | 97.04  | 89.33  | 53.61  | 68.95  | 69.96  | 17.83  | 52.59  | 91.05  |
| Electricity  | 18.56 | 298.73 | 224.13 | 214.62 | 184.37 | 146.08 | 165.93 | 215.28 | 221.10 | 187.10 | 230.46 |
| Generation & transmission electric energy  | 18.56 | 298.73 | 224.13 | 214.62 | 184.37 | 146.08 | 165.93 | 215.28 | 221.10 | 187.10 | 230.46 |

=

ST. JOHN'S COLLEGE, NEW YORK

RECEIVED FROM THE OFFICE OF THE SECRETARY OF THE ARMY

NO. 500 OF 25, 1913

FOR THE YEAR 1913

AMOUNT \$100.00

PAID TO THE OFFICE OF THE SECRETARY OF THE ARMY

FOR THE YEAR 1913

AMOUNT \$100.00

PAID TO THE OFFICE OF THE SECRETARY OF THE ARMY

FOR THE YEAR 1913

AMOUNT \$100.00

PAID TO THE OFFICE OF THE SECRETARY OF THE ARMY

FOR THE YEAR 1913

AMOUNT \$100.00

PAID TO THE OFFICE OF THE SECRETARY OF THE ARMY

FOR THE YEAR 1913

AMOUNT \$100.00

~~1278~~

1277

