

GOVERNMENT OF KERALA

**NATIONAL SAMPLE SURVEY
THIRTY FOURTH (Round)
JULY 1979 - JUNE 1980**

**tables with notes on trade hotels & restaurants
kerala**

**DEPARTMENT OF
ECONOMICS & STATISTICS
TRIVANDRUM**

NATIONAL SAMPLE SURVEY

THIRTY FOURTH ROUND

JULY 1979 - JUNE 1980

TABLES WITH NOTES ON
TRADE HOTELS AND RESTAURANTS

STATE: KERALA

TRADE HOTELS AND RESTAURANTS

(N.S.S. 34th Round)

Coverage:

The economic activities covered under this sector are described in the National Industrial classification, 1970 against the industrial codes from 60 to 69, 821 and 822.

Estimation procedure:

The income method is adopted to estimate the income originated from the sector. The estimated number of workers multiplied by the value added per worker relating to a particular industrial group is assumed to give the estimated domestic product of that industrial group.

Working force:

The working force for 78-79 for each industry group (60 to 69, 821 and 822) are arrived by moving the 1971 census figures using the Geometric growth rate of census figures.

Value added per worker:

The value added per worker are arrived from the 34th round N.S.S. results on trading activity.

The N.S.S. data does not cover public sector enterprises. Hence adjustments for the same and for imputed bank charges are also made in the estimate.

The survey on wholesale and retail trade, hotel and restaurant, transport, storage and warehousing and service-enterprises was conducted in ^{the} 34th round of the National Sample Survey. The regular survey covered the non-directory establishments (NDE) and the own account enterprises (OAE). Another independent survey was conducted to cover directory establishments (DE). The public sector establishments was left out of the coverage of the surveys.

Sample design (NDE. and OAE.):

The sample design was one of stratified two-stage with districts as strata, enumeration blocks (EB's) of the 1977 economic census as first stage sampling units and N.D.E. and O.A.E. as the second stage sampling units.

Sampling frame:

Enumeration blocks formed during 1977 Economic Census showing the number of D.E. and N.D.E. for different industries to each EB was used as the sampling frame for the selection of EBS the first stage units.

Stratification:

Each district was treated as separate strata.

Sub Stratification:

All the enumeration blocks was divided into two sub-strata. All the E.Bs. having at least one D.E. and or N.D.E. in any of the four industries, namely, (i) wholesale and retail trade, (ii) hotels and restaurant, (iii) transport and (iv) storage and warehousing were included in sub-stratum-1. Residual enumeration blocks were included in sub-stratum-2.

Allocation of Sample EBs.

Each Investigator had to survey 24 sample EBs. during the year. Thus the number of EBs proposed to be enumerated was 24 multiplied by the Investigator strength available in the State. The total number of sample EBs. to be enumerated in the State was distributed over districts and thereto rural and urban sectors in proportion to the total number of D.E. and N.D.E. industries in the district and sector (rural or urban). Next, district-wise sample size was allocated between sub-strata-1 and 2 approximately in the ratio 5:1 separately for the rural and urban sectors.

Selection of E.Bs:

Sample E.Bs. were selected from sub-stratum-1 with probability proportional to total number of DE. and NDE under the four industries, with replacement. From sub-stratum-2, sample EBs. were selected at random. Independent samples were selected from each sub-stratum within each stratum separately for rural and urban sectors.

Sample Enterprises:

All the OAE. in the service enterprises found in the sample EBs. was surveyed. In addition, a maximum of 15 enterprises were surveyed within each sample EB. All the NDE belonging to the industries under coverage of the survey were surveyed first and next a sample of OAE (other than those in the service sector) was also surveyed to make the NDE + OAE quota (excluding OAE in service sector) in a sample EB equal to 15. In case, the number of NDE in a sample EB exceeded 15 no OAE was surveyed there and a sample 15 NDE was surveyed.

The details relating to the non-directory establishments and own account enterprises were collected in schedules 2.41 B and 2.42 B.

1. Survey on Directory Establishments:

Sample Enumeration Blocks (EBs) for the Directory Establishments (DE) Survey were selected from surveyed EBs. of sub-stratum-1 of the Non-Directory Establishments (NDE) survey, showing at least one DE under survey coverage as per listing schedule of N.S.S. 34th round was termed as a success EB. for the NDE. Survey.

Sample Design (Rural):

Districts were considered as strata and independent samples of Enumeration Blocks were selected from each District. All E.Bs. in a district having at least one Directory/Non-directory establishment in industry divisions 6 and 7 (excluding communication) as per Economic Census constituted sub-stratum-1. Enumeration Blocks from sub-stratum were selected with probability proportional to size (size being the number of Directory and Non-Directory Establishments in the Industry divisions 6 and 7) (excluding communication) in the enumeration block. E.Bs. for D.E. Survey 1979-80 were selected from surveyed E.Bs. of N.D.E. survey showing at least one D.E. under survey coverage as per listing schedule of N.S.S. 34th round. Sub-blocks were formed in N.D.E. survey in few cases and one of the sub-blocks were selected at random. If selected for D.E. survey, the same sub-block was surveyed.

All directory establishments in the enumeration block were surveyed, if the number of directory establishments was less than 16 (10 for some months of the survey). When total number of the D.E. eligible for survey exceed 16 in an EB, D.Es. to be surveyed were distributed over different schedule. types as follows. First, one D.E. was allotted to each schedule type. Next, one more was allotted to each schedule type in the priority order of schedules 2.21 A, 2.32 A, 2.33 A, 2.34 A, 2.52 A, 2.53 A, 2.54 A, 2.55 A, 2.41 A, 2.42 A. Until , the total number of sample D.Es, become 16. This procedure was repeated as many times as warranted to arrive at 16 sample D.Es. After determining the number to be selected for each schedule type, D.Es. to be surveyed were selected circular systemtically, independently from each schedule type.

Urban:

The procedure adopted for selection of urban sample was similar to the procedure adopted in rural areas.

The data relating to Directory Establishments engaged in trading activities were collected in schedules 2.41 A and 2.42 A.

Agency for Field work:

Collection of data relating to the enterprises selected for the different surveys was attended to by the National Sample Survey Investigators of this Department. The Statistical Inspectors in-charge of N.S.S. at the various district headquarters supervised the field work and the District Statistical Officers were in-charge of the field work at the district level.

Table: 1 National Sample Survey 34th Round - Value added per person - 1978-79

RURAL

Industry Group	Employment			Value added (Rs. '000)			Value added per worker (Rs.)
	D.E.	N.D.E. & O.A.E.	Total	D.E.	N.D.E. & O.A.E.	Total	
1	2	3	4	5	6	7	8
60	2346	2150	4496	30228	5717	35945	7994.88
61	-	495	495	-	1774	1774	3583.84
62	88	-	88	1269	-	1269	14420.45
63	-	-	-	-	-	-	-
64	3711	1031	4742	36071	3422	39493	8328.34
65	10881	146076	156957	41626	366085	407711	2597.60
66	2007	84945	86952	10442	120517	130959	1506.11
67	268	12468	12736	2240	27385	29625	2326.08
68	3920	32448	36368	31752	73079	104831	2862.51
69	18501	188417	206918	87134	349927	437061	2112.24
821	658	3075	3733	64	7034	7098	1901.42
822	-	-	-	-	-	-	-

Table: 2 - NATIONAL SAMPLE SURVEY 34th ROUND - VALUE ADDED PER PERSON - 1978-79

Industry Group	Employment			Value added (Rs. '000)			Value added per worker (Rs.)
	D.E.	N.D.I. & O.A.I.	Total	D.E.	N.D.E. & O.A.E.	Total	
1	2	3	4	5	6	7	8
60	9703	1088	10791	69722	5492	75214	6970.06
61	2309	114	2423	24892	285	25177	10390.83
62	2283	364	2667	6072	881	6953	2607.04
63	652	151	803	30973	1043	32016	39870.48
64	3496	658	4154	47687	4787	52474	12632.16
65	18260	29917	48177	76301	82843	159144	3303.31
66	2933	21261	24194	22900	51811	74711	3088.00
67	5080	9763	14863	49430	36253	85683	5764.85
68	11810	13604	25414	86359	22094	108453	4267.45
69	22668	25018	47686	103473	65284	168757	3538.92
821	2061	993	3054	19672	4557	24229	7933.53
822	-	-	-	-	-	-	-

URBAN

Table: 3 - Net value added from Trade Hotels & Restaurants - 1978-79

RURAL

Industry Group	Employment principal worker	Employment subsidiary worker	Total	Value added per worker	Total value added (Rs.000)
	2	3	4	5	6
60	6626	1466	8092	7994.88	64694
61	6439	1425	7864	3583.84	28183
62	22536	4587	27523	14420.45	396894
63	62	14	76	-	-
64	43747	9681	53428	8328.34	444966
65	230493	51008	281501	2597.60	731227
66	11618	2571	14189	1506.11	21370
67	10788	2387	13175	2326.08	30646
68	54516	12064	66580	2882.51	191917
69	128121	28353	156474	2112.24	330511
821	5574	1234	6808	1901.42	12945
822	13	3	16	-	-
					2253353

Source: Employment - Census figures
 Ratio on principal and subsidiary workers - N.S.S. 29th Round

Table: 4 - Net value added from Trade Hotels and Restaurants - 1978-79

URBAN

Industry Group	Employment principal worker	Employment subsidiary worker	Total	Value added (Rs.)	Total Net value added (Rs.000)
1	2	3	4	5	6
60	2786	341	3127	6970.06	21795
61	735	90	825	10390.83	8572
62	882	108	990	2607.04	2581
63	40	5	45	39870.48	1794
64	5616	687	6303	12632.16	79620
65	68022	8319	76341	3303.31	252178
66	8866	1085	9953	3088.00	30735
67	8786	1075	9861	5764.85	56847
68	57800	7069	64869	4267.45	276825
69	33135	4053	37192	3538.92	131619
821	10256	1254	11510	7933.53	91315
822	1	-	1	-	-
					953881

Table:5- Average earning from ^{Trade}Hotels and Restaurants

			<u>URBAN</u>
	Employment	Total value (Rs. '000)	Average earning
Trade 60-68	183825	822262	4473
Hotels and Restaurants 69.	37192	131619	3539
Total	221017	953881	

Table: 6 - Average earning from Trade Hotels & Restaurants

			<u>RURAL</u>
	Employment	Total value (Rs. '000)	Average earning
Trade 60-68	479252	1922842	4012
Hotels and Restaurants 69	156474	330511	2112
Total	635726	2253353	

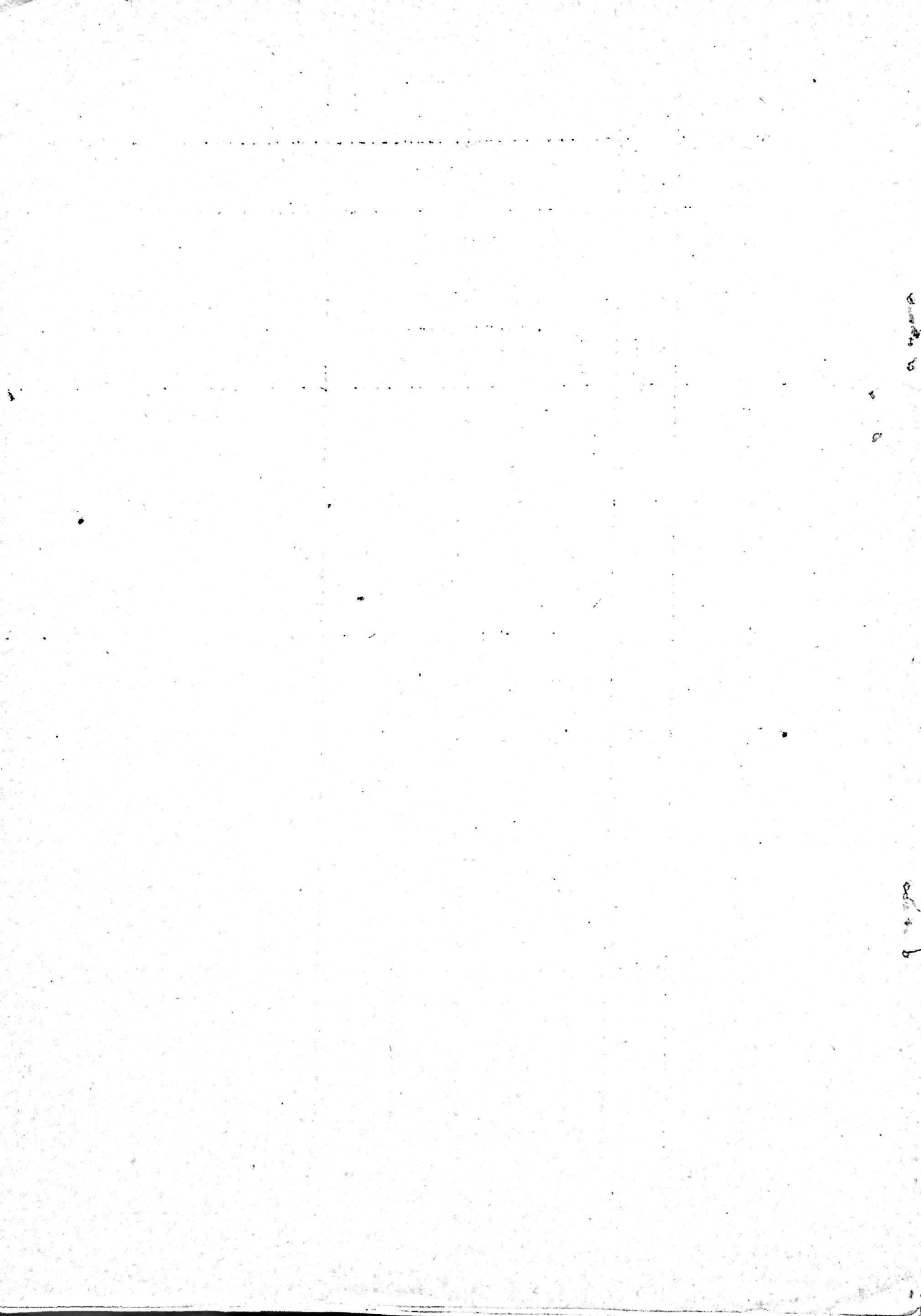
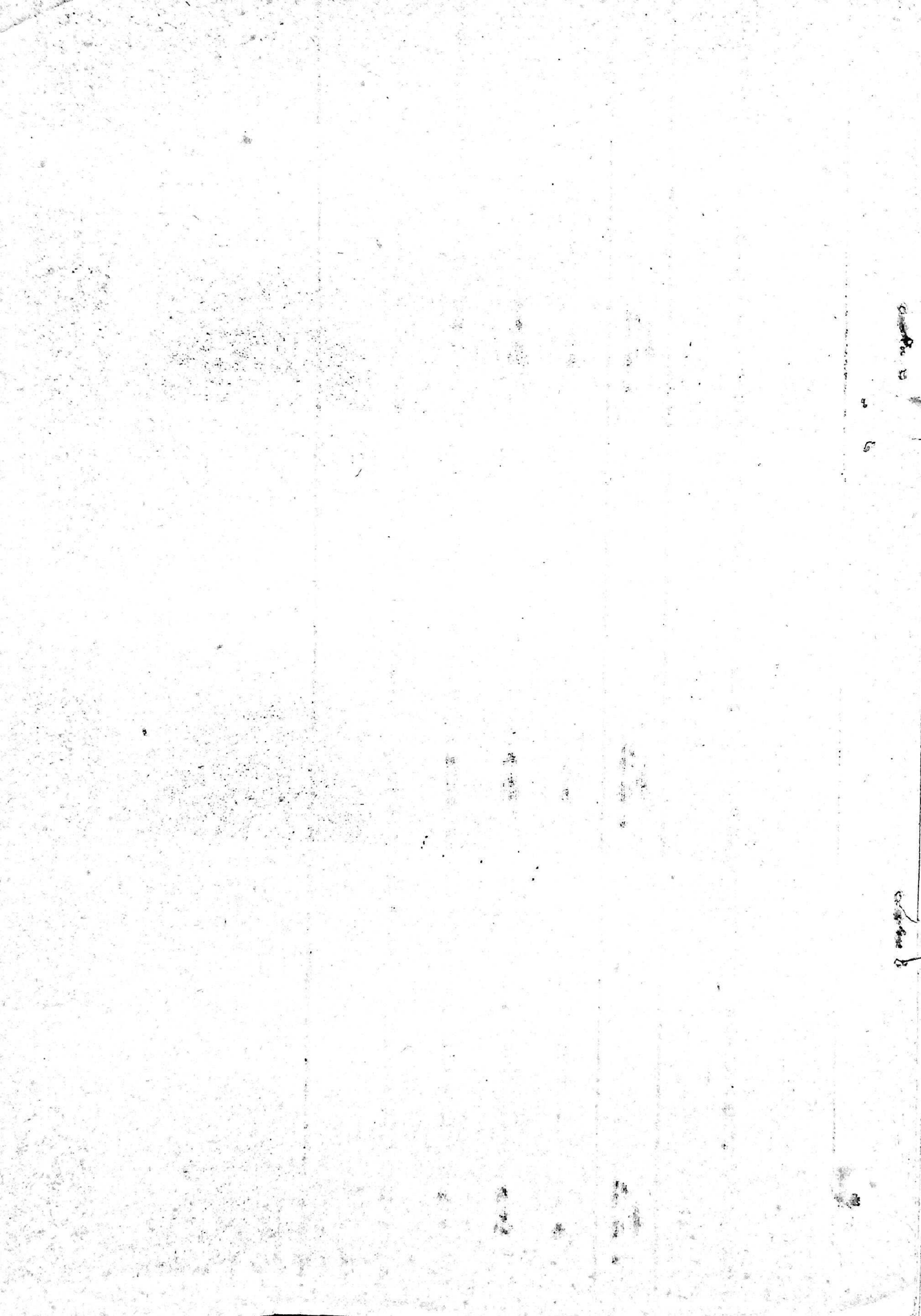


Table:7 - Statement on value added from Trade, Hotels and Restaurants - 1978-79

(Rs. '00 000)

Item	Year 1978-79
Net value added	31655
1. Trade	27451
2. Hotels and Restaurants	4621
3. Less imputed bank charges	417

=



1359

