

22x

12

420
500
<u>9.25</u>

~~3909~~



GOVERNMENT OF KERALA

DISTRICT STATISTICAL HAND BOOK

KOTTAYAM

1971

ISSUED BY BUREAU OF ECONOMICS AND STATISTICS
KERALA

PRINTED BY THE S. G. P. AT THE GOVERNMENT PRESS
TRIVANDRUM, 1974.

DISTRICT STATISTICS
HAND BOOK

DES
LIBRARY

013-031

KOTTAYAM
1971

Issued by Bureau of Economics and Statistics
Kerala

37/1315/B

PREFACE

This is the 2nd in the series of the publication of the District Statistical Hand Books for Kerala being brought out by the Bureau of Economics and Statistics. The first series brought out relates to the year 1965-66. The present one relates to the year 1970-71.

The contents of this series follow the pattern recommended by the Central Statistical Organisation and differ with the first series to that extent. All the sectors of development have been covered as far as possible with 1970-71 data. Where this could not be obtained 1969-70 data are presented. Data for 1969-70 have also been presented wherever it is found useful and convenient. Data relating to 1965-66 (the last year of the 3rd Plan) have also been presented to facilitate comparative studies.

The data presented in this series of publications were collected mostly from the Head Offices of the various Departments including the Bureau of Economics and Statistics. A number of tables were collected by the District Officers of this Department from the concerned offices. The Bureau is grateful for the kind co-operation extended by one and all in this regard.

The publication was prepared in the Publication Division of the Bureau of Economics & Statistics. The sincere efforts put in by the Staff of this Division is greatly appreciated.

Suggestions for improvement are welcome.

DIRECTOR

DISTRICT STATISTICAL HANDBOOK, 1971

CONTENTS

TABLE		PAGES
Section I—Area, Population and Housing		7—27
1.1	Area, Population and Density of population 1961	8
1.2	Do. 1971	9
1.3	Growth of population 1901—1971	10
1.4	Population by sex with Rural & Urban break up 1961	11
1.5	Do. 1971	12
1.6	Population by Age-Groups 1961	13
1.7	Population by sex in different towns 1961	14
1.8	Do. 1971	15
1.9	Population of workers under various categories 1961	16
1.10	Do. 1971	17
1.11	Distribution of 1000 non-workers under various categories 1961	18
1.12(A)	Population of scheduled caste and scheduled tribes 1961	19
(B)	Do. 1971	20
1.13(A)	Population by religion 1971	21
(B)	Do. 1971	22
1.14	Population by Marital Status 1961	23
1.15	Distribution of thousand households according to tenure status 1961	24
1.16	Distribution of thousand households according to material of roof 1961	25
1.17	Distribution of thousand households according to number of rooms 1961	26
1.18	Distribution of thousand households according to material of wall 1961	27
Section II—Climate		29—35
2.1	Rainfall at Rain Recording Stations 1966	30—31
2.2	Do. 1970	32—33
2.3	Do. 1971	34—35
Section III—Vital and Public Health Statistics		37—45
3.1	Number of registered Live births, deaths and still births by sex 1969	38
3.2	Number of registered deaths by various causes 1969	39
3.3	Medical facilities—Number of Hospitals, Dispensaries and Medical personnel 1970-71	40—41

TABLE

	PAGES
3.4	Number of patients treated in Medical Institutions (Indoor and Outdoor) 1970-71 .. 42-43
3.5	Persons sterilised according to age & sex 1969-70 .. 44
3.6	Persons sterilised according to religion 1969-70 .. 45
Section IV—Education 47-65	
4.1	Taluk wise Number of Institution (School Education) 1970-71 .. 48
4.2	Taluk wise Number of Institution (Higher Education) 1969-70 .. 49-50
4.3	Number of Institutions (School Education) 1969-70 .. 51
4.4	Number of Scholars (School Education) 1970-71 .. 52-53
4.5	Number of Teachers do. 1970-71 .. 54-55
4.6	Number of Institutions (Higher Education) 1969-70 .. 56
4.7	Number of Scholar (Higher Education) 1969-70 .. 57-58
4.8	Number of Teachers do. 1969-70 .. 59-60
4.9	Growth of Literacy 1961-71 .. 61
4.10	Libraries and Reading Rooms 1970-71 .. 61-62
4.11	Cinema houses and talkies--Number, seating capacity and tax collected 1970-71 .. 63
4.12	Number of Printing presses, News papers and periodicals 1970-71 .. 64-65
Section V—Agriculture 67-72	
5.1	Distribution of area according to Land Utilisation (Area in Hectares) 1970-71 .. 68
5.2	Area and yield of principal crops 1970-71 .. 69
5.3	Area Irrigated by different Sources 1967-68 .. 70
5.4	Estimated mean yield of dry paddy (Taluk wise) 1970-71 .. 71
5.5	Agricultural Implements 1966 .. 72
Section VI—Livestock Statistics 73-77	
6.1	Livestock population 1966 .. 74
6.2	Number of Veterinary Hospitals, Dispensaries, Veterinarians, Livestock treated in Veterinary Institutions 1969-70 .. 75
6.3	Livestock slaughtered in Municipalities 1970 .. 76
6.4	Livestock slaughtered in Panchayats 1970 .. 77
Section VII—Banks and Co-operative Societies 79-87	
7.1	Number of Commercial Banks Registered in the District 80

TABLE		PAGES
7.2	Co-operative Societies (Non Industrial) Number and Membership 1969-70	81
7.3	Co-operative Societies in the District (Non-Industrial) (Financial statement) 1969-70	82-84
7.4	Coir Co-operative Societies 1965-66	85-86
7.5	Handloom Weaver's Co-operative Societies 1969-70	87
Section VIII—Industrial Statistics		88-89
8.1	Distribution of working factories (Registered) 1969	88-89
Section IX—Labour Statistics		91-98
9.1	Average daily number of workers employed in registered factories 1969	92-93
9.2	Employment in plantation 1969-70	94
9.3	Factory Employment—Industrial Disputes 1970	95
9.4	A. Factory Employment—Agricultural wages (daily average) 1970-71	96
	B. Employment Exchange Statistics Number of Applicants on the Live Register by main Occupational Groups (Category-wise) 1970-71	97
9.5	Registration and placements affected by Employment Exchange 1970-71	98
Section X—Price Statistics		99-103
10.1	Wholesale Price of Important Commodities at important Centres 1971	100-101
10.2	Consumer Price Indices for Working Class for the Centres in the District 1971	103
Section XI—Transport and Communication		105-111
11.1	Length of Metalled and non-metalled roads 1967-68	106
11.2	Number of Registered Motor Vehicles on road 1970-71	107
11.3	Posts and Telegraph Offices and Radio Licenses 1970-71	108
11.4	Length of Railways (in kilometres) 1969-70	109
11.5	Working of State Road Transport Corporation 1970-71	110
11.6	Number of Vehicles involved Accidents on Road, Persons killed, injured 1970-71	111

TABLE		PAGES
Section XII—Judicial and Administrative Statistics		113—117
12.1	Police Stations and outposts 1970	.. 114
12.2	Strength of police force in the District by categories 1969	.. 115
12.3	Serious Crimes 1970	.. 116
12.4	Property Stolen and Recovered 1970	.. 117
Section XIII—Local Bodies		119—125
13.1	Population, Income and Expenditure of Municipalities 1970-71	.. 120—121
13.2	Income and Expenditure of Panchayats 1970-71	.. 122
13.3	Panchayats, Village and population 1970-71	.. 123—125
Section XIV—Forests		127—129
14.1	Area of Reserved Forests and Reserved Lands 1969-70	.. 128
14.2	Out-turn of Major Forest Produce 1970-71	.. 129
Section XV—Power		131—133
15.1	Consumers of Electricity 1970-71	.. 132
15.2	Consumption of Electricity 1970-71	.. 133
Section XVI—Community Development Programme		135—137
16.1	General Details of C.D. Blocks 1970-71	.. 136
16.2	Actual Expenditure and Budget Provision on Blocks 1970-71	.. 137
Section XVII—Registration		139—141
17.1	Registration of Documents 1970-71	.. 140
17.2	Documents Registered and value 1970-71	.. 141
Section XVIII—Excise		143—147
18.1	Liquor shops 1970-71	.. 144
18.2	Rentals obtained in Auction sale of Abkari shops 1970-71	.. 145
18.3	Tree tapped and tree tax collected 1970-71	.. 146
18.5	License fee on Foreign Liquors, Wine (etc.) 1970-71	.. 147
Section XIX—Sales Tax		149—156
19.1	Registered dealers 1969-70	.. 150
19.2	Classification of assessment according to Grade of turnover assessed to Sales Tax 1969-70	.. 151

TABLE		PAGES
19.3	Analysis of Revenue under General Sales Tax 1969-70	152
19.4	Demand, Collection, Remission and Balance under General Sales Tax 1969-70	153
19.5	Demand, Collection, Remission and Balance under Central Sales Tax 1969-70	154
19.6	Arrears under Salestax pending collection (General Salestax, Surcharge and General Sales Tax) 1969-70	155
19.7	Stage of arrears under Salestax (Central Salestax, Surcharge and Central Salestax pending) 1969-70	156
Section XX—Agricultural Income Tax		157—166
20.1	Classification of persons assessed to Agricultural Income Tax 1969-70	158
20.2	Number of assesees according to selected Grade of Income 1969-70	159—160
20.3	Total Agricultural Income Tax demanded according to Selected grades of Income and Classes of Assessee 1969-70	161—162
20.4	Analysis of Agricultural Income Tax Revenue 1969-70	163
20.5	Demand, Collection, Remission and Balance under Agricultural Income-tax (including Surcharge) 1969-70	164
20.6	Total Agricultural Income Tax and Super tax Demanded on different agricultural produce 1969-70	165
20.7	Stages of arrears under Agricultural Income-tax 1969-70	166
Section XXI—Land Revenue		167—168
21.1	Demand, Collection and Balance of various land Taxes (Amount in Rupees) 1970-71	168
Section XXII—Miscellaneous		169—173
22.1	Loan Sanctioned Amount Disbursed by the Kerala Financial Corporation 1970-71	170
22.2	Small Savings Collection in the District 1970-71	171
22.3	List of Markets and important Commodities Marketed 1970-71	172—173

KOTTAYAM DISTRICT

The present Kottayam district includes major portions of the old district of the same name which come under the former princely State of Travancore. It underwent a few territorial changes during the past 15 years. The District at present consists of eight taluks (1) Changanacherry (2) Kottayam (3) Kanjirappally (4) Peermade (5) Devicolam (6) Udumbanchola (7) Meenachil and (8) Vaikom.

This district lies between north latitudes $9^{\circ}15'$ and $10^{\circ}21'$ and east longitudes $76^{\circ}22'$ and $77^{\circ}25'$. It is bounded on the north by the Ernakulam and Trichur districts of Kerala State and Coimbatore district of Tamilnadu on the east by Western ghats. On the south it is bounded by Quilon and Alleppey districts and on the west by the Alleppey district.

This is the largest district in the State (with an area of 6389.0 sq. kms). All the three natural divisions of the State viz. lowland, midland and highland occur in the district also. Places which have altitude less than 25' constitutes the low land. Western portions of Changanacherry, Kottayam and Vaikom taluks came under this natural divisions. The midlands lying between 25' and 250' above mean sea level, is a very fertile region, rich in luxuriant vegetation. Paddy, coconut, tapioca, pepper, rubber and ginger are the main crops grown here. Highland on the extreme east consist of mountains, thick forests and undulating ridges. Tea, Coffee, Cardamom and rubber are the main crops cultivated here. Devikulam, the largest taluk in this district is a mountainous region with high hills and deep valleys. It has a very large area under planation crops. The terrain of the Udumbanchola taluk has close resemblance to the Devicolam taluk. Meenachil taluk lies in the hilly region. Vaikom taluk which borders the Vembanad lake lies in the low land division. Kottayam, the headquarters taluk is an industrially developed one. While the eastern portions of this taluk are bordered by the Vembanad lake, Changanacherry, the southernmost taluk of this district lies in the midland region. Kanjirappally taluk lies east of Kottayam and Changanacherry taluks. It is in the hilly tract while Peermade taluk is entirely in the high land region.

Rivers:

Periyar, Meenachil, Manimala and Pambar are the important rivers in this district.

Periyar, the second largest river in the State, takes its origin from a group of hills near Sivagiri Peak, 96 kms. south of Devicolam. After a course of 16 kms northward it is joined by Mullayar. In its course down it is further joined by Perinthula river, Kottapanayar, Chittar, Piriyanakutta Ar, Muthirapuzhayar, Deviyar and Idamalayar. At Alwaye it branches into two, each again branching into two further down. It branches into very small rivers before empty into the sea. The length of the river is 227 kms. In its course, Periyar traverses through Peermade, Udumbanchola and Devicolam taluks of this District. Thodupuzha,

Muvattupuzha, Kunnathunad, Alwaye and Parur taluk of Ernakulam District also lie in its course. It has a drainage area of 2040 sq. miles. The river is navigable to a length of 72 kms. from its mouth. Pallivasal, Kundala, Mattupetti, Shengulam, Neriamangalam and Panniyar are the completed hydroelectric projects. Idukki another large hydroelectric project on this river is under construction.

The Meenachil river originates from Peermade Plateau at an elevation of 3500'. This river is formed by several small streams starting from the Western ghats viz. Kodapuzha Ar. Kalathukadavu river, Trikoilar, Poonjar river and Chittar. The river empties itself into Vembanad lake. It has a drainage area of 1181.04 sq. kms. It traverses through the villages of Poonjar, Erattupettah, Kondoor, Kottayam, Bharananganam, Lalam, Kidangoor, Kummanam, Kottayam and Kumarakom.

The Manimala river rises from the Mothavara hills at an altitude of 4000'. It is joined by Kottayar. At Chenapadi, Chittar joins the main river and at Manimala, the Mulaeplackal thode joins the main flow. After the rivers, enters Alleppey District at Valamjanbalam, it conflues with Pamba river. The main river is 91 kms. long. It has a drainage area of 302.89 sq. kms. It flows through Mundakayam, Manimala, Mallappally, Kariyoor and Vallamkulam.

Pambar, the southern most river among the east flowing rivers of the State originates near the Benmore Tea Estate. It flows in a north-west direction upto Luckhan Tea Estate. About one mile down Stream Iravikulam Ar. join the main river. In its course several streams empty into it. The river is later joined by Karmi Ar. Pullikkadu river. The river further takes a north east direction till it exit to Tamilnadu. It draws an area of 382.32 sq. kms. in the Devicolam Taluk.

Mountains:

In this district there is a cluster of mountains known as Anamalais. Among this group of mountains Anamudi is the highest peak with an elevation of 8841 feet. The other peaks varying in elevation from 6500' to 8400'. These peaks together with the lowerland from which they rise from the High Ranges.

Backwaters:

Vembanad is the largest back water in the state, the average width being about 3.22 kms, length 83.67 kms. and area 204.61 sq. kms. It forms the western boundary of Vaikom, Kottayam and Changanacherry taluks.

Soil:

Soils of this District may be classified as alluvial, peaty, laterite, forest and hilly. The alluvial soil occurs in the western portions of Changanacherry and Kottayam taluks. Peaty or Kari soil covers about half of Vaikom taluk. To the east of alluvial and peaty soil lie laterite soils. This cover entirely the

Meenachil and Kanjirappattay taluks and western portions of Peermade and Devicolam taluks. The laterite soil in these places are more fertile and less of defects than the pure laterite soil. All garden crops like coconut, arecanut, fruit palms are grown in these places. The forest and hilly soil occur in Udumbanchola taluk and the eastern sectors of Peermade and Devicolam taluks. This soil is rich in nitrogen, but extremely poor in bases due to heavy leaching.

Geology

The District may be divided into four belts all oriented more or less north south. They are (1) belt of crystalline rocks of the Archean group, (2) a belt of residual laterite (3) a narrow belt of warakalli beds of tertiary group and (4) western most belt of recent deposits.

Climate

Climate is moderate in this District except in the three hilly taluks Devicolam, Udumbanchola and Peermade.

Temperature

The temperature in the plains ranges from 70° to 80°F. At the base of the ghats it goes up by 5° or 6° in either side. High up in the mountains it falls to 50°F in the day and to freezing point in winter nights. On the High Ranges, the temperature varies from 40°F to 60°F in March-April and between 30° to 60°F in November, December and January.

Humidity

Since the District is exposed to the full force of south west monsoon, the percentage of relative humidity is exceptionally high during the month of June, July and August.

Rainfall

Rainfall in the district was recorded in the 16 rain recording stations. Maximum rainfall during the year 1971 was 1206.5" in Kottayam and the minimum fall was 2.5" Vaikom. In High Ranges viz. at Munnar and Devicolam maximum rainfall were 1161.0" and 709.9" respectively.

As stated elsewhere above, Kottayam district is the largest in respect of area. The eight taluks of this district and the area and population in each taluk are given below:

Sl. No	Name of Taluk	Area (in Sq. kms)	population (1971 census)
1.	Changanacherry	262.0	265347
2.	Kottayam	540.2	497156
3.	Kanjirappally	351.33	172360
4.	Peermade	1307.82	146841
5.	Devicolam	1774.15	134350
6.	Udumbanchola	1071.41	264913
7.	Meenachil	722.71	351879
8.	Vaikom	319.3	252288
	Total	6389.0	2085134
	State	38864.0	21347375

There are 13 C.D. Blocks in the district covering 100 villages. The number of Panchayats is 89.

There are 4 Municipalities in this district. They are Changanacherry Kottayam, Palai and Vaikom. This total population was 1,48,646 (about 9% of the population of the district).

The district has a population of 20.85 lakhs (1971 census). This is 10.2% of the State. The density (326 per sq. KM) was comparatively less than certain other districts of the State. The sex ratio for the district is 976 (1971 census). The percentage variation in population for the present decade was 20.33. This is considerably less than that of the previous decade.

Among the population of this district, the number of Hindus and X'ian were more or less the same. Together they accounted for nearly 95% of the population.

67.72% of the population was literate (11% higher than that of 1961). This compares very favourably with the State average of 60.42%. Thus the percentage of literacy of the district was higher by 7.30% over that for the State. There were 17 colleges for general education and 7 for professional education. There were also 983 schools for general education, 17 schools for professional education and 1 school for special education.

There were 10 Government Hospitals 23 primary health centres and 17 dispensaries including T. B. centres. The number of doctors were 124. The doctor population ratio was 1:13,974.

There were 4 Government Ayurvedic Hospitals and 16 dispensaries. In addition to them there were 586 allopathic institutions (private) and 235 ayurvedic private institutions.

This District is served by a good system of transport and communication. There were 3 head postoffices and 130 sub post offices. In addition there were 83 telegraph offices. There were also 12 public call offices and 112 local call offices. This district is also served by a good system of roads. There were 1939.55 kms of good roads.

Of the total area of 626225 hectares of the District, 252919 hectares are under forest. The remaining 372059 hectares (i.e. 59.7% of the area) were

under cultivation. Important crops cultivated are paddy, pepper, ginger, cardamom, betelnuts, banana, tapioca, coconut, tea and rubber. Pepper, ginger, cardamom, betelnuts, coconut and tea are commercially important crops.

During 1969-70 there were 8 veterinary hospitals and 27 dispensaries. More than 1.26 lakhs animals were treated during 1969-70.

There were 288 registered factories in this District. This formed nearly 10% of the total registered factories in the State. The daily average number of workers employed was 8,569 in 1969. The daily average number of workers in plantations was 84,915.

Important places

Some of the important places in this district are Changanacherry, Chithirapuram, Devicolam (new & old), Munnar, Pallivasal, Erumeli, Kottayam, Kanjirappally, Ettumannur, Kumaranelloor, Bharananganam, Palai, Poonjar, Sabarimalai, Vandiperiyar, Thekkadi, Udumbanchola, and Vaikom. Changanacherry, Poonjar and Kottayam are historically important places. Munnar, Thekkadi and Peermade are good health resorts, while Erumeli, Sabarimalai, Vaikom Kumaranelloor are famous for the temples situated in each place. Bharananganam is important for the church situated in that place. Pallivasal rose to importance by the hydro electric scheme there. Kanjirappally, Mundakayam and Vandiperiyar are places of commercial importance.



I. AREA, POPULATION AND HOUSING

This section mainly deals with the area, population and housing their distribution and characteristics according to 1961 Census. Wherever possible the data from 1971 census have also been included. All the important aspects such as density of population, growth of population, sex ratio, religion, rural-urban break up, population by age-groups, distribution of households according to tenure, material of roof, number of rooms, material of wall etc. have been dealt with in this section.

I. AREA, POPULATION AND HOUSING

TABLE I.1

Area, Population and Density of Population (1961 Census)

Sl. No.	Taluk/District	Area		Population 1961	Density		Sex Ratio (Female per 1000 Males)
		Sq. Mile	Sq. km.		Per Sq. Mile	Per Sq. km.	
1	2	3	4	5	6	7	8
1	Changanacherry Taluk	101.15	261.98	224431	2219	857	996
2	Kottayam	208.40	539.75	422039	2025	782	990
3	Vaikom	127.68	330.69	215420	1687	651	1007
4	Meenachil	279.04	722.71	309830	1110	429	989
5	Kanjirappally	135.65	351.33	148786	1097	423	942
6	Peermede	504.95	1307.82	133635	265	102	927
7	Devicolam	685.00	1774.15	123155	180	69	899
8	Udumbanchola	413.67	1071.41	155584	376	145	850
	Kottayam District	2455.54	6359.85	1732880	706	273	963
	Kerala	15002.60	38855.04	16903715	1127	435	1022

Source: Superintendent of Census Operations, Kerala.

I. AREA, POPULATION AND HOUSING

TABLE 1.2

Area, Population and Density of Population (1971 Census)

Sl. No.	Taluk / District	Area Sq. K. M.	Population 1971	Density		Sex Ratio (Female per 1000 Males)
				Per Sq. K.M.		
	2	3	4	5	6	
1	Changanacherry Taluk	262.00	265347	1013	1001	
2	Kottayam	540.2	497156	921	989	
3	Vaikom	319.3	252288	790	1003	
4	Mecnachil	722.71	351879	487	990	
5	Kanjirappally	351.33	172360	491	963	
6	Peermedu	1307.82	146841	112	965	
7	Devikolam	1774.15	134350	76	931	
8	Udumbanchola	1071.41	264913	247	927	
	Kottayam District	6389.00	2085134	326	976	
	State	38864.00	21347375	549	1016	

Source: Census, Kerala.

I. AREA, POPULATION AND HOUSING

TABLE 1.3

Growth of Population, 1901—1971

Sl. No.	Census Year (As on 1st March)	Persons	Males	Females	Decade variation	Percentage decade variation
1	2	3	4	5	6	7
1	1901	475427	243730	231697
2	1911	559989	287513	272476	84562	+ 17.79
3	1921	649768	336122	313646	89779	+ 16.03
4	1931	889664	458466	431198	239896	+ 36.92
5	1941	1083329	556584	536745	193665	+ 21.77
6	1951	1327668	674061	653607	244339	+ 22.55
7	1961	1732880	882580	850300	405212	+ 30.52
8	1971	2085134	1054965	1030169	352254	+ 20.33

Source: Director of Census, Kerala.

I. AREA, POPULATION AND HOUSING

TABLE 1.4
Population by Sex with Rural and Urban Breakups—(1961 Census)

Sl. No.	Taluk/District	Male Population			Female, Population			Sex ratio	
		Rural	Urban	Total	Rural	Urban	Total	Rural	Urban
								8	9
1		3	4	5	6	7	8	9	10
1	Changnacherry Taluk	91078	21389	112467	90977	20987	111964	999	981
2	Kottayam	178767	33310	212077	177698	32264	209962	994	969
3	Vaikom	98662	8685	107347	99340	8733	108073	1007	1006
4	Meenachil	147835	7937	155772	146538	7520	154058	991	947
5	Kanjirappally	63826	12805	76631	60316	11839	72155	945	925
6	Peermade	69337	..	69337	64298	..	64298	927	..
7	Devicolum	64859	..	64859	58296	..	58296	899	..
8	Udumbanchola	84090	..	84090	71494	..	71494	850	..
	Kottayam District	798454	84126	882580	768957	81343	850300	963	967

Source:—Census Operations Kerala

I. AREA, POPULATION AND HOUSING

TABLE 15

Population by Sex with Rural and Urban Breakups (1971 Census)

Sl. No.	Taluk/District	Male Population			Female, Population			Sex ratio	
		Rural	Urban	Total	Rural	Urban	Total	Rural	Urban
								3	4
1	Deviolam Taluk	67110	2471	69581	62858	1911	64769	941	772
2	Udumbanchola	137488	..	137488	127425	..	127425	926	..
3	Peermedu	74714	..	74714	72127	..	72127	967	..
4	Meenachil	166564	10292	176856	165042	9981	175023	993	969
5	Vaikom	116099	9855	125954	116175	10159	126334	1003	1032
6	Kottayam	211919	38062	249981	209808	37367	247175	991	985
7	Kanjirappally	64857	22951	87808	63002	21550	84552	974	939
8	Changanachery	108388	24195	132583	108414	24350	132764	1002	1004
	Kottayam District	947139	107826	1054965	924851	105318	1030169	976	977
	STATE	8852350	1735501	10587851	9028576	1730948	10759524	1020	997

Source:—Census Reports

I. AREA, POPULATION AND HOUSING

TABLE 1.6

Population by Age Groups (1961 Census)

Age/Age group	Total		Rural		Urban	
	Percentage of males to total males	Percentage of females to total females	Percentage of males to total males	Percentage of females to total females	Percentage of males to total males	Percentage of females to total females.
1	2	3	4	5	6	7
Under 1 year	2.97	3.02	3.00	3.05	2.73	2.79
1 Year	3.01	3.07	3.03	3.09	2.83	2.83
2 Years	3.17	3.18	3.18	3.21	3.04	2.90
3 -	2.87	2.96	2.89	2.97	2.66	2.82
4 -	3.00	2.98	3.02	3.01	2.81	2.66
5 - 9	15.00	15.30	15.12	15.45	13.93	13.91
10 -14	12.78	13.11	12.78	13.09	12.76	13.24
15 -19	8.14	8.78	8.00	8.64	9.53	10.08
20 -24	8.60	9.12	8.55	9.10	9.10	9.31
25 -29	7.84	8.17	7.83	8.17	7.94	8.18
30 -34	6.46	6.13	6.43	6.15	6.76	6.00
35 -39	6.37	5.81	6.38	5.82	6.26	5.63
40 -44	4.21	3.74	4.21	3.72	4.15	3.94
45 -49	4.35	3.93	4.36	3.93	4.22	3.98
50 -54	3.15	2.80	3.15	2.76	3.09	3.12
55 -59	2.70	2.51	2.70	2.49	2.68	2.74
60 -64	1.94	1.85	1.93	1.83	2.00	2.08
65 -69	1.40	1.40	1.40	1.39	1.42	1.54
70 & above	2.02	2.11	2.01	2.10	2.09	2.25
Age not Staged	0.02	0.03	0.03	0.03	N	N

Source: Census, Kerala
N—Negligible

I. AREA, POPULATION AND HOUSING
 TABLE 1.7
 Population by Sex in Different Towns (1961 Census.)

Sl. No.	Name of Town	Area in Sq. K. M.	Population		
			Male	Female	Total
(1)	(2)	(3)	(4)	(5)	(6)
1	Kottayam (M)	15.54	26850	25835	52685
2	Changanacherry (M)	13.26	21389	20987	42376
3	Kanjirappally (NM)	30.48	9779	9259	19038
4	Vaikom (M)	8.73	8685	8733	17418
5	Palai (M)	14.56	7937	7520	15457
6	Ettumanoor (NM)	8.42	6460	6429	12889
7	Mundakavam (NM)	5.62	3026	2580	15606

Source: Director of Census Operations Kerala

M—Municipal Town

NM—Non-Municipal Town

I. AREA, POPULATION AND HOUSING

TABLE 1.8

Population by Sex in Different Towns (1971 Census)

Sl. No	Name of Town	Area (In Sq. K. M.)	Population		
			Male	Female	Total
(1)	(2)	(3)	(4)	(5)	(6)
1	Kottayam (M)	15.54	30075	29639	59714
2	Changanacherry (M)	13.26	24195	24350	48545
3	Kanjirappally (NM)	30.48	10675	10012	20687
4	Palai (M)	14.56	10292	9981	20273
5	Vaikom (M)	8.73	9855	10159	20014
6	Ettumanoor (NM)	8.42	7987	7728	15715
7	Ponkunnam (NM)	NA	7081	6591	13672
8	Mundakayam (NM)	5.62	5195	4947	10142
9	Munnar (NM)	NA	2471	1911	4382

Source: Census Reports

M—Municipal Town

NM—Non-Municipal Town

I. AREA, POPULATION AND HOUSING

TABLE 1.9

Population of Workers under Various Categories (1961 Census)

Sl. No.	Industrial category	Persons		Male		Female	
		No.	Percentage	No.	Percentage	No.	Percentage
(1)	(2)	(3)	(4)	(5)	(6)	(7)	(8)
1	Total workers of Cultivators	113397	20.07	99479	23.29	13918	10.08
2	As Agricultural labourers	85170	15.07	54692	12.81	30418	22.08
3	In quarrying, livestock forestry, fishing and hunting	142648	25.24	95819	22.44	46829	33.92
4	At household Industry	25907	4.58	11815	2.77	14092	10.21
5	In manufacture other than household Industry	33945	6.01	31645	7.41	2300	1.67
6	In construction	8870	1.57	8637	2.02	233	0.17
7	In Trade and Commerce	28785	5.09	27162	6.36	1623	1.17
8	In Transport, storage and communication	11006	1.95	10683	2.50	323	0.23
9	Other services	115387	20.42	87125	20.40	28262	20.47

Source: Census Reports

I. AREA, POPULATION AND HOUSING

TABLE 1.10

Population of Workers under Various Categories (1971 Census)

Sl. No.	Industrial Category	Persons		Male		Female					
		No.	Percentage	No.	Percentage	No.	Percentage				
								3	4	5	6
1	2										
1	Total workers as Cultivators	150655	24.31	147649	29.87	3006	2.40				
2	As Agricultural Labourers	161214	26.02	115014	23.26	46200	36.89				
3	Livestock forestry, fishing, plantations, Orchards and allied activities	107680	17.38	67995	13.75	39685	31.69				
4	Mining and quarrying	1823	0.29	1731	0.35	92	0.07				
5	Manufacturing, Processing, Servicing and repairs	14911	2.41	9431	1.91	5480	4.38				
	(a) Household Industry	39631	6.40	36466	7.38	3165	2.53				
	(b) Other than household Industry	9160	1.48	8978	1.82	182	0.15				
6	Construction	43568	7.03	41640	8.42	1928	1.54				
7	Trade and commerce	16009	2.58	15452	3.13	557	0.44				
8	Transport, storage and communication	74962	12.10	50026	10.11	24936	19.91				
9	Other Services	619613	100.00	494382	100.00	125231	100.00				
10	Total workers	1465521		560583		904938					
11	Non workers										

Source: Census Reports.

I. AREA, POPULATION AND HOUSING
TABLE 1.11

Distribution of 1000 Non-workers under Various Categories. (1961 Census)

Sl. No.	Activity	Total		
		Persons	Male	Female
1	2	3	4	5
1	Full time students	331	458	250
2	Household duties	244	..	401
3	Dependents, infants and disabled	402	500	339
4	Retired, rentier and independent means	6	10	2
5	Beggars, Vagrants, etc.	3	5	2
6	Inmates of peral, mental and charitable Institutions	N	1	1
7	Persons seeking employment not for the first time	12	22	5
8	Persons employed before, but now out of employment and seeking work	2	4	N
9	Total non-working population	1000	1000	1000

Source : Census Reports.
N—Negligible.

I. AREA, POPULATION AND HOUSING
TABLE 1.12 (A)

Population of Scheduled Castes and Scheduled Tribes (1961)

Sl. No.	Taluk/District	Scheduled Castes			Scheduled Tribes		
		Persons	Male	Female	Persons	Male	Female
1	2	3	4	5	6	7	8
1	Kottayam Taluk	16,271	8,101	8,170	72	34	38
2	Changanacherry Taluk	15,370	7,725	7,645	781	388	393
3	Vaikom Taluk	19,471	9,674	9,797	161	78	83
4	Meenachil Taluk	10,905	5,495	5,410	6,243	3,137	3,106
5	Kanjirappally Taluk	11,178	5,872	5,306	3,512	1,809	1,703
6	Peermedu Taluk	34,325	17,355	16,970	1,882	939	943
7	Devicolam Taluk	40,384	20,554	19,830	5,628	2,875	2,753
8	Udumbanchola Taluk	9,973	5,281	4,692	3,112	1,544	1,568
	Kottayam District	1,57,877	80,057	77,820	21,391	10,804	10,587

Source : Supt. of Census Operations, Kerala.

I. AREA, POPULATION AND HOUSING

TABLE: 1.12 (B)
Population of Scheduled Caste and Scheduled Tribes (1971)

Sl. No.	Taluk/District	Scheduled Castes			Scheduled Tribes						
		Persons	Males	Females	Persons	Males	Females				
								3	4	5	6
1	2										
1	Dev. colam	39055	19839	19216	6691	3407	3284				
2	Udumbanchola	15761	8198	7563	3633	1836	1797				
3	Peermedu	32727	16433	16294	1789	903	886				
4	Meenachil	13630	6901	6729	6350	3200	3150				
5	Vaikom	24371	12108	12263	89	43	46				
6	Kottayam	20522	10396	10126	114	50	64				
7	Kanjirappally	14857	7537	7320	4383	2270	2113				
8	Changancherry	21148	10624	10524	123	77	46				
	Kottayam District	182071	92036	90035	23172	11786	11386				
	STATE	1772168	880926	891242	269356	134996	134360				

Source: Census Reports

I. AREA, POPULATION AND HOUSING

TABLE 1.13 (A)

Population by Religion (1961)

Sl. No.	Religion	Number			Percentage distribution		
		Total	Rural	Urban	Total	Rural	Urban
			4	5		6	7
1	2	3	4	5	6	7	8
1	Buddhists	3	—	—	N	N	—
2	Christians	817,939	745,424	72,515	47.20	47.56	43.82
3	Hindus	848,234	771,496	76,738	48.95	49.22	46.38
4	Jains	—	—	—	—	—	—
5	Jews	—	—	—	—	—	—
6	Muslims	66,310	50,105	16,205	3.83	3.20	9.79
7	Sikhs	34	31	3	N	N	N
8	Zoroastrians	3	3	—	N	N	N
9	Religion not stated	357	349	8	0.02	0.02	0.01
10	All Religion	1,732,880	1,567,411	16,5469	100.00	100.00	100.00

Source: Superintendent of Census Operations, Kerala

— Nil

N—Negligible

I. AREA, POPULATION AND HOUSING
TABLE 1.13 (b)
Population by Religion (1971)

Sl. No.	Religion	Number			Percentage distribution		
		Total	Rural	Urban	Total	Rural	Urban
		3	4	5	6	7	8
1							
2							
3	Buddhists	978553	888824	83729	46.93	47.48	42.10
4	Christians	1014039	913104	100935	48.63	48.78	47.36
5	Hindus	8	5	3	N	N	N
6	Jains	92250	69828	22422	4.43	3.73	10.52
7	Muslims	12	11	1	N	N	N
8	Sikhs	5	5	—	N	N	—
9	Other Religions and persuasions	267	213	54	0.01	0.01	0.02
	Religion not stated	2085134	1871990	213144	100.00	100.00	100.00

Source : Census Reports.

— Nil.

N Negligible.

I. AREA, POPULATION AND HOUSING

TABLE No. 1.14

Population by Marital Status (1961 Census)

Marital status	District			State		
	Total	Male	Female	Total	Male	Female
1	2	3	4	5	6	7
Never married	999125	538706	460419	9579030	5218710	4360320
Married	640498	320962	319536	6058305	2942912	3115393
Widowed	77174	18453	58721	1000419	143041	857378
Divorced or separated	16079	4456	11623	260723	54566	206157
Unspecified status	4	3	1	5238	2698	2540
Total	1732880	882580	850300	16903715	8361927	8541788

Source: Census Report.

I. AREA, POPULATION AND HOUSING

TABLE No. 1.15

Distribution of Thousand Households according to Tenure Status (1961 Census)

Sl. No.	Taluk/District	Total		Rural		Urban	
		Owned	Rented	Owned	Rented	Owned	Rented
1	2	3	4	5	6	7	8
1	Changanacherry Taluk	926	74	964	36	744	256
2	Devicolum	328	672	328	672	—	—
3	Kanjirappally	848	152	857	143	802	198
4	Kottayam	924	76	956	44	733	267
5	Mecnachil	936	64	949	51	670	330
6	Peerumedu	288	712	288	712	—	—
7	Udumbanchola	763	237	763	237	—	—
8	Vaikom	977	23	987	13	865	135
9	Kottayam District	799	201	803	197	756	244

Source: Director of Census Operations, Kerala

= Nil.

I. AREA, POPULATION AND HOUSING

TABLE No. 1.16

Distribution of Thousand Households according to Material of Roof (1961 census)

Material of roof	Kottayam District		Changanacherry	Devi-colum	Kanjiappally	Kottayam	Meenachil	Peer-madu	Udumbanchola	Vaikom									
	Rural	Urban																	
1	2	3	4	5	6	7	8	9	10	11	12	13	14	15	16	17	18	19	
Grass, Leaves, reeds, thatch, wood and bamboo	702	614	851	633	321	—	770	723	754	502	738	623	396	—	847	—	—	822	789
Tiles, slate & shingle	213	382	149	360	93	—	213	275	246	492	260	375	460	—	29	—	—	178	208
Corrugated Iron, Zinc or other Metal sheets	50	N	—	—	334	—	1	1	—	—	1	—	67	—	109	—	—	—	—
Asbestos cement sheets	35	2	N	3	252	—	16	1	N	4	1	2	77	—	15	—	—	N	—
Concrete and stone slabs	N	2	—	4	—	—	—	—	N	2	N	—	N	—	N	—	—	—	3

Source: Director of Census Operations, Kerala.

N = Negligible.

— Nil.

R = Rural.

U = Urban;

I. AREA, POPULATION AND HOUSING

TABLE 1.17

Distribution of Thousand Households according to Number of Rooms (1961 Census)

Sl. No.	Taluk/Districts	No regular room	One room	Two rooms	Three rooms	Four rooms	Five or more rooms
1	2	3	4	5	6	7	8
1	Changanacherry Taluk	39	319	314	184	74	70
2	Devicolum	1	678	230	45	17	29
3	Kanjirappally	38	554	254	96	28	30
4	Kottayam	37	342	321	166	67	67
5	Meenachil	25	283	283	175	125	109
6	Peermade	—	500	405	57	21	17
7	Udumbanchola	14	481	384	95	17	9
8	Vaikom	35	405	264	153	76	67
	KOTTAYAM DISTRICT	26	412	307	135	62	58

Source: Census Reports.

= Nil

I. AREA, POPULATION AND HOUSING

TABLE 1.18

Distribution of Thousand Households according to Material of Wall (1961 Census)

Material of wall	Kottayam District		Changanacherry	Devi-colum	Kanjirappally	Kottayam	Meenachil	Peer-made Taluk	Udumbanchola	Vaikona									
	Rural	Urban																	
1	2	3	4	5	6	7	8	9	10	11	12	13	14	15	16	17	18	19	
Grass, leaves, reeds and bamboo	247	157	173	50	182	—	309	335	212	89	200	276	91	—	540	—	—	354	283
Timber	135	132	123	63	26	—	238	247	175	98	283	260	46	—	12	—	—	56	143
Sand	121	134	212	238	82	—	90	79	120	158	141	—	137	—	70	—	—	89	7
Unburnt bricks	14	5	—	6	26	—	2	—	6	—	29	41	3	—	43	—	—	1	—
Burnt bricks	37	18	14	1	33	—	6	27	28	36	37	2	18	—	43	—	—	5	—
Stone	445	553	478	640	645	—	354	312	459	617	310	419	704	—	160	—	—	495	567
Cement concrete.																			
G. I. Sheets or Other metal sheets	N	1	—	2	N	—	—	—	N	1	N	2	—	—	N	—	—	—	—
All other materials	1	—	—	—	6	—	1	—	—	—	—	1	—	2	—	—	—	—	—
	N	—	N	—	—	—	N	—	—	—	N	—	—	—	—	—	—	—	—

Source: Census Reports.

N=Negligible.

R=Rural.

U=Urban.

100-100-100-100-100
100-100-100-100-100
100-100-100-100-100
100-100-100-100-100

No.	Name	Address	City	State	Zip	Phone
1
2
3
4
5
6
7
8
9
10
11
12
13
14
15
16
17
18
19
20
21
22
23
24
25
26
27
28
29
30
31
32
33
34
35
36
37
38
39
40
41
42
43
44
45
46
47
48
49
50

100-100-100-100-100
100-100-100-100-100
100-100-100-100-100
100-100-100-100-100

II. CLIMATE

The meteorological data given in this section mainly cover monthly rainfall, temperature and humidity.

II. CLIMATE
TABLE 2.1
Rainfall at Rain Recording

Sl. No.	Stations	Latitude	Longitude	Months			
				January	February	March	April
1	2	3	4	5	6	7	8
1	Chinnar	09°52'	77°06'	9.9	—	50.00	236.5
2	Marayur	10°16'	77°09'	—	—	101.6	×
3	Devicolam	10°04'	77°06'	11.4	—	24.5	53.6
4	Vandanmedu	09°43'	77°08'	4.3	—	31.5	76.2
5	Vaikom	09°45'	76°24'	—	4.6	20.6	601.9
6	Palai	09°36'	76°46'	2.5	26.7	202.5	175.1
7	Ettumanoor	09°40'	76°34'	—	16.5	115.0	178.0
8	Kumily	09°35'	77°10'	—	—	20.3	107.9
9	Kottayam	09°35'	76°32'	—	—	124.9	140.2
10	Peermadu (Taluk)	09°34'	76°59'	—	16.3	100.8	172.9
11	(Residency)	09°34'	76°59'	—	37.9	22.1	988.0
12	Kanjirappally	09°34'	76°47'	37.9	63.5	174.2	99.0
13	Munnar	10°06'	77°04'	×	×	×	×
14	Changanacherry	09°27'	76°33'	—	—	177.8	171.5
15	Velloor	—	—	1.5	52.1	12.2	393.1

Source : State Observatory, Trivandrum

— = Nil

× = Not recorded

Stations—1966

(In M. M)

May	June	July	August	September	October	November	December	Annual Rainfall
9	10	11	12	13	14	15	16	17
—	25.1	69.8	28.7	221.8	243.6	23.6	19.3	928.3
63.5	34.3	270.8	17.6	95.8	311.1	122.0	303.4	×
140.0	845.0	437.5	143.4	119.5	104.7	419.1	7.6	2306.3
63.3	229.5	371.8	131.0	220.7	232.1	264.9	47.5	1672.8
183.7	511.5	537.8	145.1	284.5	×	584.4	×	×
15.2	513.6	782.1	329.2	202.6	390.3	387.8	85.7	3113.3
32.1	265.0	×	165.1	186.7	74.0	107.0	×	×
53.3	121.8	257.5	57.1	247.5	403.6	238.6	135.8	1643.4
34.3	645.1	369.9	105.9	344.0	487.1	384.6	36.1	2571.1
153.5	678.2	759.0	236.4	224.2	347.0	477.1	..	×
110.6	1000.8	966.4	468.0	356.8	661.2	585.6	74.1	5271.5
22.5	560.0	539.6	278.6	441.1	493.7	368.3	161.9	3232.3
×	×	×	×	×	×	×	×	×
6.3	×	×	145.9	374.9	729.1	463.7	×	×
—	279.3	368.0	68.1	135.6	150.3	687.9	44.4	2192.5

II. CLIMATE

TABLE 2.2

Rainfall at Rain Recording

Sl. No.	Stations	Latitude	Longitude	Months			
				January	February	March	April
1	2	3	4	5	6	7	8
1	Chinnar	09°52'	77°06'	NA	9.7	2.5	68.6
2	Marayur	10°16'	77°09'	79.3	11.2	—	290.2
3	Munnar	10°06'	77°04'	10.0	4.8	5.2	346.4
4	Devecolam	10°04'	77°06'	—	12.0	4.8	167.0
5	Vandanmedu	09°43'	77°08'	NA	69.8	NA	110.7
6	Vaikom	09°45'	76°24'	37.8	NA	NA	82.1
7	Palai	09°36'	76°45'	5.1	82.3	76.2	300.4
8	Ettumanoor	09°40'	76°34'	NA	NA	NA	NA
9	Kumili	09°35'	77°10'	—	17.8	8.9	67.4
10	Kottayam	09°35'	76°32'	NA	13.0	52.6	NA
11	Peermedu (Taluk)	09°34'	76°59'	47.0	135.8	49.9	162.1
12	„ (Residency)	09°34'	76°59'	97.0	161.8	96.0	196.8
13	Kanjirappally	09°34'	76°47'	NA	NA	NA	NA
14	Changanacherry	09°27'	76°38'	24.4	24.8	37.4	155.5
15	Veloor	—	—	—	23.6	NA	83.5
16	Kottayam (AM)	—	—	4.2	17.4	54.2	347.4

Source:—State observatory, Trivandrum.

—Nil, NA—Not Available

Stations—1970

(in M. M.)

May	June	July	August	September	October	November	December
9	10	11	12	13	14	15	16
73.1	55.7	331.1	NA	NA	NA	207.5	NA
NA	322.4	147.1	281.0	240.7	727.9	350.4	17.5
431.0	457.0	548.0	753.6	76.0	430.0	101.0	33.0
NA	NA	408.8	486.7	95.2	430.7	133.6	33.0
160.5	320.0	275.9	341.8	135.3	249.3	101.4	14.0
159.9	252.9	NA	513.7	NA	157.2	NA	4.4
14.1	672.3	514.4	473.3	342.0	503.7	168.8	—
NA	NA	439.3	NA	119.1	NA	NA	NA
62.1	147.2	NA	NA	NA	NA	NA	NA
177.0	NA	508.7	NA	NA	397.8	25.2	—
68.0	868.4	755.5	833.8	346.8	NA	104.9	21.1
347.8	925.9	411.3	NA	NA	NA	NA	NA
NA	NA	NA	NA	NA	NA	NA	NA
317.5	838.2	NA	NA	322.3	174.6	NA	—
63.6	316.7	94.8	326.7	116.0	74.5	25.2	—
234.1	601.9	469.5	NA	350.2	NA	73.6	15.8

II CLIMATE
TABLE 2.3
Rainfall at Rain Recording

Sl. No.	Stations	Latitude	Longitude	Months			
				January	February	March	April
1	2	3	4	5	6	7	8
1	Chinnar	09°52'	77°06'	—	—	—	NA
2	Marayur	10°16'	77°09'	34.3	10.4	—	148.8
3	Munnar	10°06'	77°04'	NA	21.0	11.0	79.0
4	Devicolam	10°04'	77°06'	69.2	12.0	92.5	119.1
5	Vandanmedu	09°43'	77°08'	32.3	66.0	59.7	54.7
6	Vaikom	09°45'	76°24'	NA	2.5	NA	NA
7	Palai	09°36'	76°45'	13.9	138.4	31.7	342.5
8	Ettumanur	09°40'	76°34'	44.5	NA	NA	NA
9	Kumali	09°35'	77°10'	NA	NA	NA	NA
10	Kottayam	09°35'	76°32'	64.0	NA	NA	36.3
11	Peermedu (Taluk)	09°34'	76°59'	NA	81.8	51.1	119.9
12	„ (Residency)	09°34'	76°59'	NA	NA	NA	NA
13	Kanjirappally	09°34'	76°47'	NA	NA	NA	NA
14	Changanacherry	09°27'	76°38'	NA	NA	4.0	65.5
15	Veloor	—	—	69.6	NA	NA	47.6
16	Kottayam (AM)	—	—	NA	26.2	31.9	149.9

Source : State Observatory, Trivandrum.

=Nil NA=Not Available.

Stations—1971

(In M. M.)

May	June	July	August	September	October	November	December
9	10	11	12	13	14	15	16
NA	NA	NA	NA	NA	NA	NA	NA
163.8	264.4	142.0	203.5	168.4	NA	43.2	112.7
224.0	1161.0	745.6	784.8	525.2	248.5	20.6	49.4
228.4	709.9	396.4	426.6	561.6	335.6	—	162.6
72.0	513.3	421.1	247.0	301.7	240.4	79.6	198.4
502.1	NA	NA	NA	NA	NA	NA	NA
497.5	707.1	624.5	656.7	405.5	503.1	111.7	122.6
NA	NA	NA	NA	NA	NA	NA	NA
NA	NA	NA	NA	NA	NA	NA	NA
410.6	869.6	659.2	322.7	346.0	189.5	25.0	NA
322.8	1206.5	996.6	691.0	686.9	320.8	53.6	130.5
NA	NA	NA	NA	NA	NA	NA	NA
NA	NA	NA	NA	NA	NA	NA	NA
222.7	771.0	454.7	406.3	344.0	NA	NA	NA
138.7	357.3	214.8	329.6	633.0	325.7	140.9	64.6
413.0	895.6	NA	411.8	370.2	NA	NA	125.0

1910

1910

Name	Age	Sex	Occupation	Education	Religion
John Smith	35	M	Farmer	High School	Methodist
Mary Smith	32	F	Homemaker	High School	Methodist
Robert Smith	10	M	Scholarship	Elementary	Methodist
Elizabeth Smith	8	F	Scholarship	Elementary	Methodist
William Smith	5	M	Scholarship	Elementary	Methodist
Anna Smith	3	F	Scholarship	Elementary	Methodist
James Smith	2	M	Scholarship	Elementary	Methodist
John Doe	40	M	Teacher	College	Baptist
Mary Doe	38	F	Homemaker	High School	Baptist
Robert Doe	15	M	Student	High School	Baptist
Elizabeth Doe	12	F	Scholarship	High School	Baptist
William Doe	9	M	Scholarship	Elementary	Baptist
Anna Doe	6	F	Scholarship	Elementary	Baptist
James Doe	4	M	Scholarship	Elementary	Baptist
John Brown	50	M	Businessman	College	Presbyterian
Mary Brown	48	F	Homemaker	High School	Presbyterian
Robert Brown	20	M	Student	College	Presbyterian
Elizabeth Brown	18	F	Scholarship	College	Presbyterian
William Brown	14	M	Scholarship	High School	Presbyterian
Anna Brown	11	F	Scholarship	High School	Presbyterian
James Brown	8	M	Scholarship	Elementary	Presbyterian



III. VITAL AND PUBLIC HEALTH STATISTICS

In this section, details on live birth, deaths and still births, deaths by various causes, medical facilities persons treated, particulars on sterilised persons according to age, sex and religion etc. are given. Every effort is made to incorporate the latest data.

III. VITAL AND PUBLIC HEALTH STATISTICS

TABLE : 3.1

Number of Registered Live Births, Deaths and Still Births by Sex

Year : 1961

District/State	Live birth			Death			Still birth		
	Male	Female	Total	Male	Female	Total	Male	Female	Total
	(2)	(3)	(4)	(5)	(6)	(7)	(8)	(9)	(10)
District									
Rural	16651	16136	32787	3468	3166	6634	47	46	93
Urban	3241	3139	6380	978	661	1639	31	26	57
Total	19892	19275	39167	4446	3827	8273	78	72	150
State									
Rural	140307	131262	271569	34439	30582	65021	266	234	500
Urban	55518	51629	107147	12635	9530	22165	1272	1138	2410
Total	195825	182891	378716	47074	40112	87186	1538	1372	2910

Source : B. E. & S.

III. VITAL AND PUBLIC HEALTH STATISTICS

TABLE : 3.2

Number of Registered Deaths by Various Causes

Causes	District	State
	1969	1969
(1)	(2)	(3)
Cholera	2	16
Small-pox	2	10
Plague
Dysentery and Diarrhoea	115	1034
Respiratory Diseases	105	2952
Fevers	207	6039
All other causes	7522	68784
Accidents and Injuries	117	1402
Total	8170	80237

Source : B. E. & S.

III. VITAL AND PUBLIC HEALTH STATISTICS

TABLE No. 3.3

Medical Facilities-Number of Hospitals Dispensaries and Medical Personnel (Modern Medicine)

Institution	District		
	1965-66	1969-70	1970-71
(1)	(2)	(3)	(4)
Government Hospitals	10	10	10
Primary Health Centres	16	23	23
Dispensaries including T. B. Centres	24	17	17
Grant-in-aid Institutions
Leprosy Hospitals
Mental Hospitals
Dental Clinics
Other Institutions *	41	511	586
No. of Beds	1332	3899	4771
Medical Personnel *			
(a) Doctors	NA	117	124
(b) Nurses	NA	217	318
(c) Midwives	NA	113	113
(d) Compounders	NA	46	54
(e) Others	NA

* Excludes personnel in other Institutions.

Source : District Medical Officer, Kottayam.

III. VITAL AND PUBLIC HEALTH STATISTICS

TABLE 3.3 (Contd.)

Medical Facilities—Number of Hospitals/Dispensaries and Medical Personnel (Indigenous Medicines)

Institutions	1965-66	1969-70	1970-71
I	2	3	4
(a) <i>Ayurvedam</i> :			
Government Hospitals	4	4	4
Dispensaries	16	16	16
Other Institutions *	NA	218	235
Number of Beds	100	137	137
Medical Personnel@		*	
(a) Vaidyans and Hakkims	26	128	148
(b) Nurses	7	7	9
(c) Midwives
(d) Compounders	..	21	26
(e) Others	NA	7	11
(b) <i>Homoeopathy</i> :			
Government Hospitals	1	1	1
Dispensaries	NA	2	2
Other Institutions *	NA	108	115
Number of Beds	50	50	50
Number of Medical Personnel @			
(a) Doctors	3	5	5
(b) Nurses	10	10	10
(c) Midwives	1	1	1
(d) Compounders	1	2	2
(e) Others	20	20	20

* Private Vaidyans also included.

@ Excludes personnel in other Institutions.

Source: District Indigenous Medical Officer, Kottayam.

III. VITAL AND PUBLIC

TABLE

Number of Patients Treated (In-door and

Category	Government Hospital			Dispensaries and Health Centres		
	1965-66	1969-70	1970-71	1965-66	1969-70	1970-71
1	2	3	4	5	6	7
Modern Medicine :						
Bed strength	NA	554	634	NA	113	171
In-patients treated	"	30719	42160	"	4620	17817
Out-patients treated	"	599767	687006	"	409691	1080856
Indigenous Medicine :						
Bed strength	"	100	100	"
In-patients treated :	"	688	690	"
Out-patients treated	..	312218	423610	"
Homoeopathy Medicines:						
Bed strength	..	50	50	"
In-patients treated	..	438	460	"
Out-patients treated	..	86171	97492	"	NA	NA

Source: District Medical Officer, Kottayam and District Indigenous Medical Officer, Kottayam.

HEALTH STATISTICS

3.4

Out-door) in Medical Institutions

Grant-in-aid Institutions			Others *			Total		
1965-66	1969-70	1970-71	1965-66	1969-70	1970-71	1965-66	1969-70	1970-71
8	9	10	11	12	13	14	15	16
NA	NA	3232	3866	NA	3899	4671
"	"	NA	NA	"	35339	59977
"	"	NA	NA	"	1009458	1767862
"	37	37	"	"	137	137
"	46	46	"	"	734	736
"	159869	162048	"	"	472087	585658
"	"	"	50	50
"	"	"	438	460
"	NA	NA	"	NA	NA	"	86171	97492

III. VITAL AND PUBLIC HEALTH STATISTICS

TABLE 3.5

Persons sterilised according to Age and Sex

Age group	District														State 1969-70				
	1965-66							1969-70											
	Males operated		Females operated		Total		Males operated		Females operated		Total		Males operated		Females operated		Total		
	No.	% excluding not recorded	No.	% excluding not recorded	No.	% excluding not recorded	No.	% excluding not recorded	No.	% excluding not recorded	No.	% excluding not recorded	No.	% excluding not recorded	No.	% excluding not recorded	No.	% excluding not recorded	
1	2	3	4	5	6	7	8	9	10	11	12	13	14	15	16	17	18	19	
15-19	..	0.3	0.7
20-24	9	0.3	13	4.2	22	0.7	46	1	118	9	164	3	389	1	58	15	2938	5	..
25-29	269	9.7	96	30.9	365	11.9	539	16	513	38	1052	22	4771	12	6463	39	11234	20	..
30-34	660	23.0	112	36.0	772	25.1	926	27	404	30	1330	28	9017	23	4719	28	13736	24	..
35-39	981	35.5	78	25.0	1059	34.4	1016	29	278	20	1294	27	10965	28	2563	15	13528	24	..
40 & above	848	30.6	12	3.9	860	27.9	940	27	45	3	985	20	14361	36	516	3	14877	27	..
Not recorded	228	..	44	..	272	..	35	..	34	..	69	..	1069	..	420	100	1489
Total	2995	100.00	355	100.00	3350	100.00	3502	100	1392	100	4894	100	40072	100	17248	100	57320	100	..

Source: B. E. & S.

Nil.

III. VITAL AND PUBLIC HEALTH STATISTICS

TABLE 3.6

Sterilised Persons according to Religion

Religion	District												State							
	1965-66						1969-70						1969-70							
	Male		Female		Total		Male		Female		Total		Male		Female		Total			
No.	%	No.	%	No.	%	No.	%	No.	%	No.	%	No.	%	No.	%	No.	%	No.	%	
1	2	3	4	5	6	7	8	9	10	11	12	13	14	15	16	17	18	19		
Hindus	1774	59.2	169	47.6	1943	58.0	1582	59	724	56	2306	58	28189	74	11769	74	39958	74		
Christians	1051	35.1	140	39.5	1191	35.6	999	37	519	40	1518	38	6730	18	2879	18	9609	18		
Muslims	68	2.3	10	2.8	78	2.3	87	4	42	4	129	4	2981	8	1216	8	4197	8		
Not recorded	102	3.4	36	10.1	138	4.1	834	107	941				2172		1384		3356			
Total	2995	100.0	355	100.0	3350	100.0	3502	100	1392	100	4894	100	40072	100	17248	100	57320	100		

Source: B. E. & S.

1979

1979

IV. EDUCATION

This section deals mainly with the details on School and College education some information on libraries, cinema houses etc. are also included. Under education information regarding Talukwise and typewise institutions, number of scholars & teachers are given. Tables on growth of literacy, No. of libraries and reading rooms, grant distribution to libraries seating capacity and tax collection of cinema houses are also included.

IV. EDUCATION

TABLE: 4.1

Taluk-wise number of Institutions (School Education)

Sl. No.	Name of Taluk	1965-66										1970-71									
		School for General Education				School for Professional Education			School for Special Education			School for General Education				School for Professional Education			School for Special Education		
		(Pre-primary)	Lower primary	Upper primary	Secondary	Total	Engineering & Technology, Technical & Industrial, Arts & Crafts	Teacher's Training	Music, Dancing and other Fine-arts	Physically Handicapped	Reformatory	Nursery (Pre-primary)	Lower Primary	Upper Primary	Secondary	Total	Engineering & Technology, Technical & Industrial Arts & Crafts	Teacher's Training	Music, Dancing & other Fine-Arts	Physically handicapped	Reformatory
1	2	3	4	5	6	7	8	9	10	11	12	13	14	15	16	17	18	19	20	21	22
		Nursery	78	34	22	134		3				1	32	31	28	142		3			
1	Changanacherry	NA	44	7	6	57							36	10	8	54	1				
2	Devicolum	"	60	29	11	100		1				1	58	30	14	103					
3	Kanjirappally	"	158	51	47	256	3	6				15	158	55	50	278	4	1	6	1	
4	Kottayam	"	132	52	34	218	1	3				4	131	55	44	234	1				
5	Meenachil	"	29	12	6	48							29	12	10	51					
6	Peermedu	"	77	25	18	120						3	72	25	19	119	1				
7	Vaikom	"	33	14	3	50							48	18	9	75					
8	Udumbanchola	"	611	224	147	982	4	13				24	614	236	182	1056	7	13			
	TOTAL DISTRICT	NA	611	224	147	982	4	13				24	614	236	182	1056	7	13			1

Source: Director of Public Instructions.

—: Nil.

NA: Not Available.

IV. EDUCATION

TABLE 4.2

Taluk-wise number of Institution (Higher Education)

Sl. No.	Name of Taluk	University Department		College for General Education Arts, Science & Oriental studies		Teachers training		Engineering		Modern medicine		Ayurveda		Homeo	
		1965-66	1970-71	1965-66	1970-71	1965-66	1970-71	1965-66	1970-71	1965-66	1970-71	1965-66	1970-71	1965-66	1970-71
1	2	3	4	5	6	7	8	9	10	11	12	13	14	15	16
1	Changanacherry			3	3	1	1								
2	Devicolum														
3	Kanjirappally			1	2	2	2			1				1	
4	Kottayam			5	5	5	1								
5	Meenachil			4	5	1	1								
6	Permedu														
7	Vaikom			1	1										
8	Udumbanchola														
	District			14	17	4	4			1				1	1

Source: University.

-- Nil.

TABLE (concl'd.)

Sl. No.	Name of Taluk	Veterinary		Agriculture		Law		Commerce		Physical education		Music, Dancing & others		Fine Arts		Others (Polytechnic)	
		1965-66	1970-71	1965-66	1970-71	1965-66	1970-71	1965-66	1970-71	1965-66	1970-71	1965-66	1970-71	1965-66	1970-71	1965-66	1970-71
1	Changanacherry																
2	Deviculam																
3	Kanjirappally																
4	Kottayam																
5	Meenachil																
6	Peermadu																
7	Vaikom																
8	Udumbanchola																
	District																
		17	18	19	20	21	22	23	24	25	26	27	28	29	30	31	32

IV. EDUCATION

TABLE 4.3
Number of Institutions by type of Management (School Education)

TYPE OF SCHOOL	Number of Schools									
	1965-66					1970-71				
	Government	Private aided	Private not aided	Total	Government	Private aided	Private not aided	Total		
1	2	3	4	5	6	7	8	9		
I. School for General Education:										
1. Nursery (Pre-Primary)	3	5	8	16	3	10	11	24		
2. Lower Primary	259	344	8	611	243	362	9	614		
3. Upper Primary	70	153	1	224	75	160	1	236		
4. Secondary	27	115	5	147	40	137	5	182		
II. School for Professional Education:										
5. Engineering and Technology and Technical, Industrial, Arts and Crafts										
6. Teachers Training	2	2		4	4	3		7		
III. Schools for Special Education	3	10		13	3	10		13		
7. Music, Dancing & Other Fine Arts										
8. Physically Handicapped	1			1	1			1		
9. Reformatory										

IV. EDU
TABLE
Number of Scholars

TYPE OF SCHOOL	Number of					
	Government				Private	
	Boys		Girls		Boys	
1	65-66	70-71	65-66	70-71	65-66	70-71
	2	3	4	5	6	7
I. School for General Education:						
1. Nursery (Pre-primary)	72	66	49	52	124	160
2. Lower Primary	48450	61866	44935	57737	57244	84078
3. Upper Primary	25170	23505	22545	21089	40286	50044
4. Secondary *	15604	10180	12552	9090	38526	30365
II. School for Professional Education:						
5. Engineering and Technology and Technical, Industrial and Arts & Crafts	NA	701	NA	29	NA	46
6. Teachers Training	402	113	518	218	709	116
III. School for Special Education:						
7. Music, Dancing and other Fine Arts	—	—	—	—	—	—
8. Physically handicapped	NA	107	NA	65	—	—
9. Reformatory	—	132	—	—	—	—

* 65-66 figures includes the scholars in the Upper Primary classes attached to the High schools.

Source: Director of public Instruction.—Nil

NA—Not available.

CATION

4.4

(School Education)

Scholars

		Private not aided				Total			
Girls		Boys		Girls		Boys		Girls	
65-66	70-71	65-66	70-71	65-66	70-71	65-66	70-71	65-66	70-71
8	9	10	11	12	13	14	15	16	17
104	195	180	176	168	221	376	402	321	468
53766	80099	572	791	564	856	106266	146735	99265	138692
41123	50824	229	592	..	60	65685	74144	63668	71973
38976	34517	569	617	137	62	54699	41162	51665	43669
—	—	..	—	—	—	—	747	NA	29
1355	404	—	1111	229	1873	622
—	—	—	—	—	—	—	—	—	—
—	—	—	—	—	—	NA	107	—	65
—	—	—	—	—	—	—	132	—	—

No. of teachers 1965-1966

Type of School	Private not aided												Total			
	Untrained						Trained						Untrained		Total	
	Men	Women	Men	Women	Men	Women	Men	Women	Men	Women	Men	Women	Men	Women	Men	Women
63-66	18	19	20	21	22	23	24	25	26	27	28	29	30	31	32	33
70-71	NA	4	19	13	NA	—	NA	5	NA	—	NA	26	NA	—	NA	5
63-66	4	15	1	46	NA	8	..	10	1599	1974	2589	3246	89	34	225	91
70-71	5	15	1	1	6	8	..	—	1748	2147	1848	2305	226	153	238	153
63-66	24	27	3	3	10	9	5	..	12137	1912	1362	1304	246	21	230	13
70-71	NA	70	NA	3	NA	23	..	2
63-66	57	43	56	35	4	1	3	..
70-71	NA	4	NA	2
63-66	NA	4	NA	4
70-71

I. School for General Education

1. Nursery (Pre-primary)
2. Lower Primary
3. Upper Primary
4. Secondary

II. School for Professional Education :

5. Engineering and Technology and Technical, Industrial and Arts and Crafts
6. Teachers Training

III. School for Special Education

7. Music, Dancing and Other Fine Arts
8. Physically handicapped
9. Reformatory

Source : D. P. I.

— Nil.

N.A. Not available.

IV. EDUCATION

TABLE 4.6

Number of Institutions by type of management (Higher, Education)

Type of Institution	Number of Institutions					
	1965-66		1970-71			
	Government	Private	Total	Government	Private	Total
I. University Departments	2	3	4	5	6	7
II. Colleges for General Education including oriental studies	..	14	14	..	17	17
III. Colleges for Professional Education	..	4	4	..	4	4
1. Teachers Training	1	..	1	1	..	1
2. Engineering	..	1	1	..	1	1
3. Modern medicine
4. Ayurveda
5. Homoeo
6. Veterinary
7. Agriculture
8. Law
9. Commerce
10. Physical Education
IV. Colleges for Special Education;
11. Music, Dancing and other fine Arts	1	..	1
12. Others (Polytechnic)

Source: University

IV. EDUCATION

TABLE 4.7

Number of Scholars (Higher Education)

Type of Institutions	Number of Scholars										
	1970-71					Total					
	Government		Private			Total		Boys		Girls	
	Boys	Girls	Total	Boys	Girls	Total	Boys	Girls	Boys	Girls	Total
I	2	3	4	5	6	7	8	9	10		
II. University Departments Colleges for General Education (i) Arts and Science (ii) Education (Oriental Studies)	—	—	—	—	—	—	—	—	—	—	—
III. Colleges for professional Education:	—	—	—	14362	11852	26214	14362	11852	26214	—	—
1. Teachers Training	—	—	—	—	—	—	—	—	—	—	—
2. Engineering	—	—	—	225	283	508	225	283	508	—	—
3. Allopathic medicine	265	128	393	—	—	—	—	—	—	—	—
4. Ayurveda	—	—	—	—	—	—	—	—	—	—	—
5. Homoco	—	—	—	—	—	—	—	—	—	—	—
6. Veterinary Science	—	—	—	N.A.	N.A.	391	N.A.	N.A.	391	—	—
7. Agriculture	—	—	—	—	—	—	—	—	—	—	—

TABLE 4.7 (concl'd)

1	2	3	4	5	6	7	8	9	10
III	Colleges for professional education:								
8.	Law	—	—	—	—	—	—	—	—
9.	Commerce	—	—	—	—	—	—	—	—
10.	Physical Education	—	—	—	—	—	—	—	—
IV.	Colleges for Special Education:								
	Music, Dancing and other fine arts	—	—	—	—	—	—	—	—
	Others (Polytechnic)	273	16	289	—	—	273	16	289

Source: University

— Nil

IV. EDUCATION

TABLE 4.8

Number of Teachers (Higher Education)

Type of Institution	Number of Teachers											
	Government					Private					Total	
	Male	Female	Total	Male	Female	Total	Male	Female	Total	Male	Female	Total
1	2	3	4	5	6	7	8	9	10			
I. University Department												
II. Colleges for General Education:												
1. Arts and Science				796	314	1110	796	314	1110			
2. Oriental Studies												
III. Colleges for professional Education:												
1. Teachers Training				21	10	31	21	10	31			
2. Engineering			138									
3. Allopathic medicine	97	41					97	41			138	
4. Ayurveda												
5. Homoeo				13	1	14	13	1	14			
6. Veterinary Science												

TABLE 4.8 (concl'd)

1	2	3	4	5	6	7	8	9	10
III. Colleges for professional Education:									
7. Agriculture	—	—	—	—	—	—	—	—	—
8. Law	—	—	—	—	—	—	—	—	—
9. Commerce	—	—	—	—	—	—	—	—	—
10. Physical Education	—	—	—	—	—	—	—	—	—
IV. Colleges for Special Education:									
Music, Dancing and other fine Arts.	—	—	—	—	—	—	—	—	—
Others	—	—	—	—	—	—	—	—	—
(Polytechnic)	19	3	22	—	—	—	19	3	22

Source: University
— Nil

IV. EDUCATION

TABLE 4.9

Growth of Literacy

PERCENTAGE OF LITERACY

1	District			State		
	Male	Female	Total	Male	Female	Total
	2	3	4	5	6	7
1961	62.40	50.51	56.56	54.97	38.90	46.85
1971	71.77	63.59	67.72	66.63	54.31	60.42

Source: Census Reports

IV. EDUCATION AND CULTURAL EDUCATION

TABLE 4.10

Library and Reading rooms 1970-'71

Name of Taluk	Number of libraries	Members	No. of books
1	2	3	4
Changanacherry	56	11386	104340
Kottayam	102	20691	341747
Meenachil	96	19272	285692
Kanjirappally	33		
Peermedu	12	8860	99759
Devicolum	21	6973	34913
Udumbanchola	23	4018	23814
Vaikom	37	7147	70583
Kottayam District	380	78347	960848
STATE	3269	636087	6758223

Source: Kerala Grandasala Sangham

TABLE 4.10 (contd.)
Grant 1970-1971

Name of Taluk	No. of libraries	No. of benefited under each grade										Total No. Benefited	Amount	Building grant	
														No. benefited	Amount
		A	B	C	D	E	F	G	H	I	J				
1	2	3	4	5	6	7	8	9	10	11	12	13	14		
Changanacherry	56	—	4	4	11	3	12	5	5	44	16325	2	7539		
Kottayam	102	3	6	11	18	13	16	9	5	81	33635	—	—		
Mecnathil	96	2	2	13	8	27	13	14	8	87	31700	—	—		
Kanjirappally	33	1	2	4	7	1	5	3	1	24	10550	—	—		
Peermedu	12	—	—	1	—	—	—	2	2	5	1390	—	—		
Devicolum	21	—	—	—	2	—	1	1	5	9	2315	—	—		
Udumbanchola	23	—	—	—	—	1	5	7	1	14	3560	—	—		
Vaikom	37	—	—	3	5	5	8	6	3	30	9705	2	3925		
Kottayam District	380	6	14	36	51	50	60	47	20	294	109180	4	11464		
STATE	3269	31	95	223	362	523	647	494	196	2571	891080	37	107155		

Source: Kerala Granthasala Sangham.

Grade: A Rs. 1200, B Rs. 700, C Rs. 550, D Rs. 450, E Rs. 325, F Rs. 275, G Rs. 240, H Rs. 180.

IV. EDUCATION AND CULTURAL EDUCATION

TABLE 4.11

Cinema houses and talks — Number, seating capacity and tax collected

District/ State	Seating Capacity	No. of Cinema houses & talks					Tax collected (Rs)		
		1965-66	1969-70	1970-71	1965-66	1969-70	1970-71		
1	2	3	4	5	6	7	8		
	Permanent below	—	6	8	—	5275.34	54319.20		
	1000	8	16	17	15728.55	32652.56	33018.10		
	1500	5	11	11	33810.20	55735.94	58919.09		
	1500 & above	—	8	8	—	6043.99	8176.83		
	Sub Total	13	41	44	49538.75	146707.83	154433.22		
	Temporary Below	5	21	21	4032.97	43254.43	39897.00		
	1000	18	19	19	43369.67	143982.23	158768.75		
	1500	—	1	1	—	8453.70	98191.27		
	1500 & above	—	—	—	—	—	—		
	Sub Total	23	41	41	47402.64	195690.36	208485.02		
	Grand Total	36	82	85	96941.39	342398.19	362918.24		

Source: Municipalities and Panchayats.

EDUCATION AND CULTURAL EDUCATION

TABLE 4.12

Number of Printing Presses, News Papers and Periodicals by languages

Year	No. of printing presses	No of Dailies			No. of Weeklies			Fortnightlies		
		Malaya-lam	English	Others (Specify)	Malaya-lam	English	Others (Specify)	Malaya-lam	English	Others (Specify)
1	2	3	4	5	6	7	8	9	10	11
1965-66	N. A.	5	3
1969-70	24	4	21	2	1 (Hindi)	15	1	1 (Tamil) 1 (Hindi) 1 (Anglo-Malaya-lam) 1 (Sanskrit)
1970-71	40	7	17	2	..	5	1	..

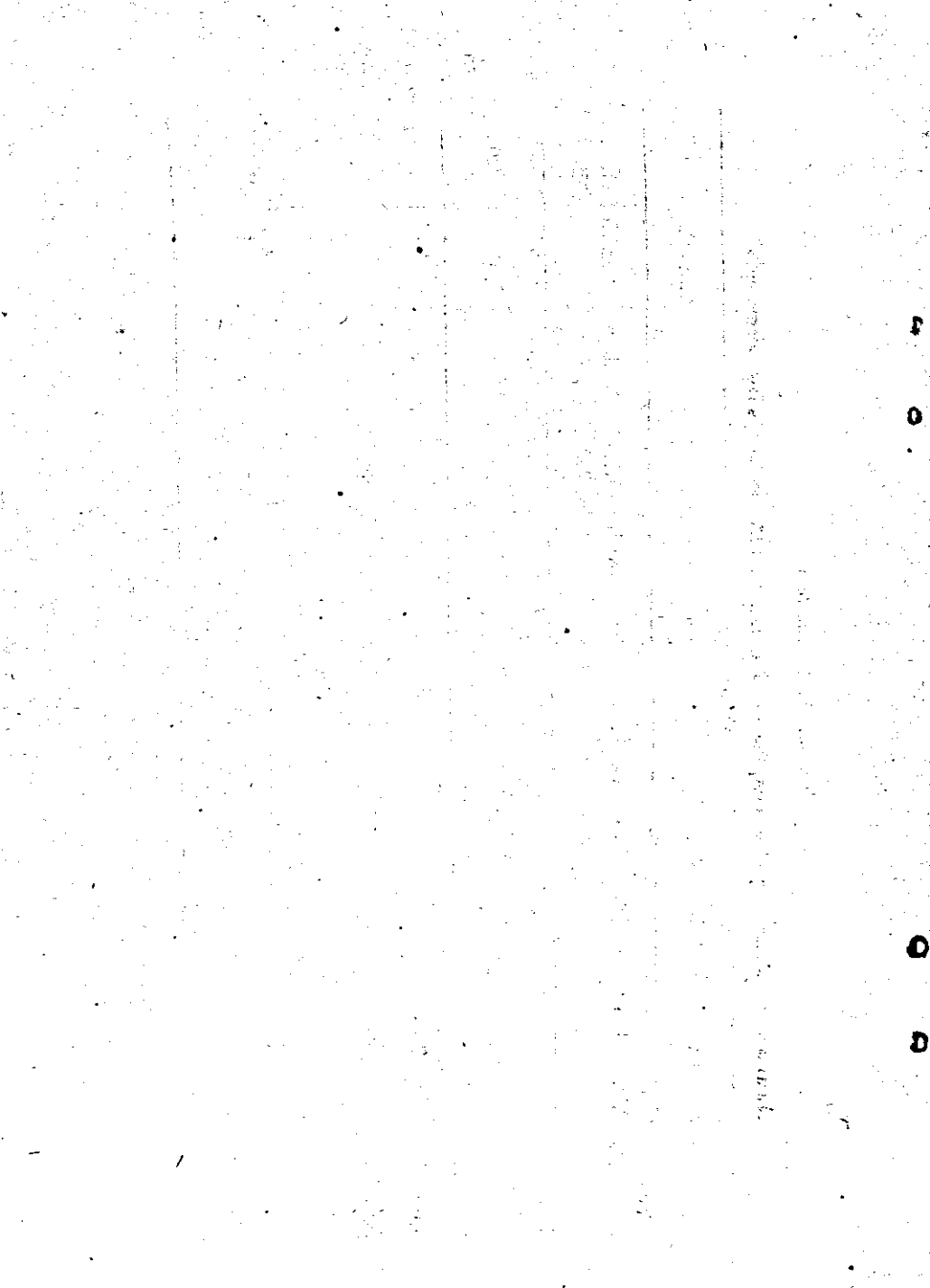
Source: Collectorate, Kottayam.

TABLE 4.12 (concl.d.)

Number of Printing Presses, News Papers and Periodicals by languages

Year	Monthlies & Bi-monthlies			Quarterlies				Annuals				
	Malayalam	English		Others (Specify)	Malayalam	English		Others (Specify)	Malayalam	English		Others (Specify)
		Malayalam	English			Malayalam	English			Malayalam	English	
1	12	13	14	15	16	17	18	19	20			
1965-66	7	9
1969-70	24	6	1 (Tamil)	1	1	1 (Tamil)
1970-71	34	4	1 (Tamil) 1 (Anglo-Malayalam)	3	2	..	4	4	1 (Hindi)			

Source: Collectorate, Kottayam.



V. AGRICULTURE

The Statistics relating to Agriculture have been furnished in the section. Tables on distribution of area according to utilisation, area and production of important crops, source-wise irrigation details, estimated mean yield of paddy, agricultural machinery and implements are incorporated in this section.

V. AGRICULTURE

TABLE 5.1

Distribution of area according to Land Utilisation (Area in Hectares)

Sl. No.	Classification	1965-66	1969-70	1970-71	State 1970-71
1	2	3	4	5	6
1	Total geographical area according to village papers	626225	626225	626225	3838523
2	Forest	251779	252694	252919	1054864
3	Land put to non-agricultural uses	15305	17312	18870	274525
4	Barren and uncultivable lands	17950	7585	7479	71646
5	Permanent pastures and other grazing lands	3500	3500	3500	27800
6	Land under miscellaneous tree crops not included in net area sown	14355	2242	3962	132176
7	Cultivable waste	18380	16075	14635	79519
8	Fallow lands other than current fallow	980	1291	1276	22678
9	Current fallow	2945	3258	3462	23633
10	Net area sown	310031	321998	320122	2171682
11	Area sown more than once	33682	50475	51937	760861
12	Total cropped area	344713	372473	372059	2932543

Source: B. E. & S.

V. AGRICULTURE
TABLE 5 2
Area and yield of principal crops

Sl. No.	Crops	District										State
		1965-66		1969-70		1970-71		1970-71		1970-71		
		Area (in hect.)	Yield (M. T.)	Area (in hect.)	Yield (M. T.)	Area (in hect.)	Yield (M. T.)	Area (in hect.)	Yield (M. T.)	Area (in hect.)	Yield (M. T.)	
1	2	3	4	5	6	7	8	9	10	10		
1	Rice	40530	37741	50081	72867	50033	85587	874.83	1298.01			
2	Pulses	776	337	662	198	401	90	39.53	13.98			
3	Sugar Crops	1440	5365	1048	7539	1573	5157	7.65	37.63			
4	Pepper	14448	4496	17028	5139	16858	5088	117.54	25.03			
5	Ginger	3667	3229	3585	4245	3729	6634	12.17	19.68			
6	Turmeric	1238	1065	1141	982	1130	1035	4.30	5.34			
7	Cardamom	24324	1362	42666	817	43093	991	47.49	1.25			
8	Betel nuts	4854	487	5299	532	5149	517	85.82	12738.00			
9	Mangoes	7861	NA	6809	NA	6497	NA	58.10	NA			
10	Bananas (including plantain)	4914	36985	6046	45646	6316	47786	48.76	368.98			
11	Cashewnuts	1503	1686	1490	1672	1311	1471	102.71	115.24			
12	Tapioca	43815	755809	37107	689819	37120	690432	293.55	4617.19			
13	Coconut	71618	346	75705	366	74839	362	719.14	3981.00			
14	Tea	28957	27495	27797	28716	27212	29888	37.59	41.45			
15	Coffee	1991	538	2131	984	2091	965	31.56	13.57			
16	Rubber	46958	15226	54231	23973	55444	24487	179.26	78.73			

Source: B. E. & S.

N. B.—Coconuts and Betel nuts are million nuts.

V AGRICULTURE

TABLE 5.3

Area irrigated by different sources (Hectares)

Sl. No.	Type	District		State
		1965-66	1967-68	1967-68
1	2	3	4	5
1	Minor	480	220	5612
2	Medium	—	—	3020
3	Major	—	—	99014
	Total	480	220	107646

Source: Chief Engineer, Irrigation & Projects.
Only departmental figures are included.

V. AGRICULTURE

TABLE 5.4

Estimated mean yield of dry paddy (Kg./ Hectare)-Taluk-wise.

Taluk/District	1969-70										1970-71							
	Virippu (Autum)			Mundakan (Winter)			Punja (Summer)			Virippu (Autum)			Mundakan (Winter)			Punja (Summer)		
	Cropped area (hectare)	Mean yield of dry paddy	Cropped area (hectare)	Mean yield of dry paddy	Cropped area (hectare)	Mean yield of dry paddy	Cropped area (hectare)	Mean yield of dry paddy	Cropped area (hectare)	Mean yield of dry paddy	Cropped area (hectare)	Mean yield of dry paddy	Cropped area (hectare)	Mean yield of dry paddy	Cropped area (hectare)	Mean yield of dry paddy	Cropped area (hectare)	Mean yield of dry paddy
1	2	3	4	5	6	7	8	9	10	11	12	13	14	15	16	17	18	19
1 Changanacherry	1818	2391	1488	2310	2889	6744	1818	2232	1488	2699	3553	3219						
2 Kanjurappally	50	2042	143	1765	2889	..	50	1915	143	1670						
3 Peermedu	..	1762	90	2486	90	3045						
4 Kottayam	2413	1457	6809	2291	11171	2449	2413	1908	6809	2746	11171	2783						
5 Vaikom	1441	1457	7175	1851	2339	2352	1441	1724	7175	2415	2292	3236						
6 Meenachil	1904	2027	2882	2304	440	2470	1904	1975	2882	2835	440	3080						
7 Devicolam	272	2475	4325	1642	272	2461	4325	2108						
8 Udumbanchola	1767	2731	1767	3089						
KOTTAYAM DISTRICT	7898	1941	24679	2081	17503	2626	7898	1984	24679	2565	17456	2938						
STATE	393747	2006	382171	2057	95063	2920	394798	2044	381971	2241	94987	3272						

Source: B. E. & S.

V. AGRICULTURE

TABLE 5.5

Agricultural Implements

Item	District		State
	1961	1966	1966
1	2	3	4
Ploughs			
Wooden	38802	24037	475930
Iron	232	660	17179
Carts	1676	1012	16309
Sugarcane crushers			
with power	16	48	457
with Bullocks	223	230	989
Oil Engines with pumps for irrigation	213	124	6824
Electric pumps for irrigation	294	258	4869
Tractors	93	61	418
Ghanies			
5 Kgs and more	137	28	692
Less than 5 kgs	141	52	628

Source: Live stock Census.

VI. LIVESTOCK STATISTICS

In this section information on live stock population, viterinary instituti-
ons and personnel and number of live stock slaughtered in Municipalities
and Panchayats are furnished.

Sl. No.	Name of Municipality or Panchayat	1951	1952	1953
1
2
3
4
5
6
7
8
9
10
11
12
13
14
15
16
17
18
19
20
21
22
23
24
25
26
27
28
29
30
31
32
33
34
35
36
37
38
39
40
41
42
43
44
45
46
47
48
49
50
51
52
53
54
55
56
57
58
59
60
61
62
63
64
65
66
67
68
69
70
71
72
73
74
75
76
77
78
79
80
81
82
83
84
85
86
87
88
89
90
91
92
93
94
95
96
97
98
99
100

VI. LIVESTOCK STATISTICS

TABLE 6.1

Livestock Population

Item	District		Kerala State
	1961	1966	1966
1	2	3	4
CATTLE			
a. Males over 3 years	34167	33561	519523
b. Females over 3 years	168605	183532	1219242
c. Young stock	156287	165177	1117962
BUFFALOES			
a. Males over 3 years	5806	5799	253859
b. Females over 3 years	6631	7911	134770
c. Young stock	2758	4500	82615
Sheep	1782	813	11519
Goats	137361	160023	1189218
Horses and Ponies	122	78	426
Mules	169	1	8
Donkeys		118	310
Pigs	61656	63515	111928
TOTAL LIVESTOCK:	575344	625028	4641375
POULTRY			
a. Fowls	1136275	1307984	9587286
b. Ducks	74040	59929	318751
c. Others	2906	690	2950

Source: Live stock Census.

VI. LIVESTOCK STATISTICS

TABLE 6.2

No. of Veterinary Hospitals/Dispensaries, Veterinary Officers and Livestock treated in Veterinary Institutions.

Sl. No.	Description	District		State
		1965-66	1969-70	1969-70
1	2	3	4	5
1	No. of Institutions:			
	Hospitals	8	8	61
	Dispensaries	18	27	232
2	No. of Veterinary Officers:	NA	31	428
3	Cases of anti-rabic treatment done post prophylactic.	616	1027	9760
4	Inpatients treated:	115	148	1229
5	Outpatients treated:	102817	126191	1703893
6	Total	102932	126339	1705122
7	No. of Obsterical cases:	1214	512	10313
8	No. of castrations	1763	1046	33120
9	Other operations.	911	1223	31691
10	Total	3888	2781	75124

Source: Director of Animal Husbandry.

VI. LIVESTOCK STATISTICS

TABLE 6.3

Livestock slaughtered in Municipalities

Sl. No.	Name of Municipality	1965-66										1970-71									
		Cow	Bull or Bullocks	Calves	Buffaloes	Sheep	Goats	Pigs	Total slaughtered	Cow	Bull or Bullocks	Calves	Buffaloes	Sheep	Goats	Pigs	Total slaughtered				
1	2	3	4	5	6	7	8	9	10	11	12	13	14	15	16	17	18				
1	Kottayam	116	977	170	10041	11304	21	1273	593	5866	2	7776									
2	Changanacherry	570	1154	821	6912	9457	1809	81	254	5759	7933										
3	Vaikom	22	70	378	2499	470	472	29	54	258	4	833									
4	Palai	247	864	594	2446	610	95	364	26	1095											

Source: Municipalities.

V I. LIVESTOCK STATISTICS

TABLE 6.4

Livestock slaughtered in Panchayats

		1970										Total sla- ughtered
1	2	3	4	5	6	7	8	9	10	11		
	Cow	Bull or Bullocks	Calves	Total	Buffaloes	Sheep	Goats	Pigs	Others			
District	9115	17958	3235	30308	15885	10372	11507	5861	313	74246		
State	29102	47317	4992	81411	53740	23898	100517	13068	703	273337		

Source : Veterinary College, Mannuthy, Data available for 79 Panchayats only.

1957-58

1958-59

1959-60

1960-61

1961-62

1962-63

1963-64

1964-65

1965-66

1966-67

1967-68

1968-69

1969-70

1970-71

Year
1957-58
1958-59
1959-60
1960-61
1961-62
1962-63
1963-64
1964-65
1965-66
1966-67
1967-68
1968-69
1969-70
1970-71

VII. BANKS AND CO-OPERATIVE SOCIETIES

This section deals with the working of commercial banks, the number and membership, of various types of Co-operative Societies and their working and the financial position.

VII. BANKS AND CO-OPERATIVE SOCIETIES

TABLE 7.1

Number of Commercial Banks registered in the District

(Amount in Rs. '000)

Type of banks	1960—61		1965—66		1966—67				
	No. of banks	Paidup Reserves capital	No. of banks	Paidup Reserves capital	No. of banks	Paidup Reserves capital			
1	2	3	4	5	6	7	8	9	10
I. Scheduled banks									
II. Non-scheduled banks									
(a) Non-scheduled banks having paidup capital and reserves of Rs. 5 lakhs and above									
(b) Non-scheduled banks having paidup capital and reserves of Rs. 1 lakh and above but not less than 5 lakhs									
(c) Non-scheduled banks having paidup capital and Reserves of Rs. 50,000 and above but less than Rs. 1 lakh									
(d) Non-scheduled banks having paidup capital and reserves of less than Rs. 50,000.									
Total (I&II)									

There is no commercial bank registered in the district

VII. BANKS AND CO-OPERATIVE SOCIETIES

TABLE 7.2

Co-operative Societies (Non-Industrial)

Sl. No.	Type of societies	Number of societies		Number of members	
		1965-66	1969-70	1965-66	1969-70
1	District Co-operative Bank	1	1	314	334
2	Primary Land mortgage Bank	2	2	4125	6507
3	Agricultural Credit Societies	305	239	132121	167139
4	Non-agricultural Credit Societies	22	31	11146	14235
5	Apex Marketing Societies	NIL	..
6	Central Marketing Societies
7	Primary Marketing Societies	9	12	2817	10323
8	Milk Supply Unions	3	1	1578	309
9	Milk Supply Societies	31	38	3710	6065
10	Farming Societies	24	23	1376	1278
11	Primary Consumer's Society	35	36	5135	7139
12	Housing Societies	11	10	471	567
13	Fishermen Co-operative Societies	..	NA	..	NA
14	Other non-credit Societies
	(a) Agricultural	NA	15	..	1596
	(b) Non-agricultural	NA	142	..	112571
15	Supervising Unions	5	NA	539	NA
16	State Co-operative Institute
17	Regional Co-operative Institute
18	Other Societies	NA	NA	NA	NA

Source : Registrar of Co-operative Societies.

VII. BANKS AND CO-OPERATIVE SOCIETIES

TABLE 7.3

Co-operative Societies in the District (Non-Industrial)

(Rs. in lakhs)

Sl. No.	Type of societies	Paid up share capital		Deposits		Borrowing		Reserve fund	
		1965-66	1969-70	1965-66	1969-70	1965-66	1969-70	1965-66	1969-70
1	2	3	4	5	6	7	8	9	10
1	District Co-operative Bank	23.42	37.41	67.18	152.14	55.14	78.51	0.96	2.07
2	Primary Land Mortgage Bank	NA	5.41	NA	0.04	NA	79.40	NA	0.08
3	Agricultural Credit Societies	49.59	92.99	63.07	132.38	67.26	161.17	2.64	5.22
4	Non-agricultural Credit Societies	8.70	15.37	19.17	36.46	1.43	12.79	0.89	1.24
5	Apex Marketing Societies	Nil
6	Central Marketing Societies	Nil
7	Primary Marketing Societies	4.14	10.59	0.23	*8.35	5.02	1.89
8	Milk Supply Unions	0.29	0.55	0.25	15.32	0.15	0.44
9	Milk Supply Societies	0.40	0.89	0.24	0.71	0.07	0.63
10	Farming Societies	0.89	0.90	..	1.58	1.36	..	0.01	0.14
11	Primary Consumer's Societies	1.45	2.58	0.63	1.59	0.59	1.55
12	Housing Societies	0.70	1.26	2.82	4.92	..	0.19

TABLE 7-3—contd.

1	2	3	4	5	6	7	8	9	10
13	Fishermen Co-operative Societies.	Nil
14	Other non-credit Societies:	1.65	0.94	0.40	0.88	..	0.18
	(a) Agricultural	10.19	14.77	0.74	5.60	0.05	6.21
	(b) Non-agricultural	..	NA
15	Supervising Unions	..	NA
16	State Co-operative Unions	..	NA
17	Regional Co-operative Institute	..	NA
18	Other Societies	1.92	NA	NA	NA	4.06	..	0.40	..

Source :

*Including Borrowings

Source : Registrar of Co-operative Societies.

TABLE 7.3—(cont'd.)

Co-operative Societies in the District (Non industrial)

Sl. No.	Type of Societies	Other funds			Total working capital			Loans issued *	
		1969-70		1965-66	1969-70		1965-66	1969-70	
		3	4	5	6	6	7		
1	2								
1	District Co-operative Bank	2.80	5.62	149.50	275.75	53.99	152.70		
2	Primary Land Mortgage Bank	NA	0.16	NA	85.09	NA	12.96		
3	Agricultural credit societies	8.22	19.54	190.78	411.30	87.19	268.27		
4	Non-agricultural credit societies	2.08	3.89	32.27	69.75	17.93	57.96		
5	Apex marketing societies	Nil	—	—	—	..	—		
6	Central marketing societies	Nil	—	..	20.83	2.02	1.14		
7	Primary marketing societies	0.36	—	0.69	16.31	0.05	Nil		
8	Milk supply Unions	—	—	0.71	2.23	0.38	—		
9	Milk supply societies	—	—	2.26	2.62	0.15	0.03		
10	Farming Societies	—	—	2.72	6.35	—	Nil		
11	Primary consumer's Societies	—	—	3.52	6.37	0.25	0.95		
12	Housing Societies	—	—	—	—	..	—		
13	Fishermen Co-operative	—	Nil	—	—	—	—		
14	Other non credit societies	—	—	—	—	—	—		
	(a) Agricultural	—	Nil	2.05	2.00	—	1.07		
	(b) Non-agricultural	—	Nil	10.98	26.58	0.48	3.87		
15	Supervising Unions	—	NA	—	NA	—	—		
16	State Co-operative Unions	—	NA	—	NA	—	—		
17	Regional Co-operative Institute	—	NA	—	NA	—	—		
18	Other Societies	0.01	NA	6.39	NA	—	—		

Source: Registrar of Co-operative Societies

* Excluding cash credit and over dra

VII. BANKS AND CO-OPERATIVE SOCIETIES

TABLE 7.4

Coir Co-operative Societies*

Sl. No.	Type of Societies	Number of Societies		Number of Members		Paid up share capital (Rs. in Lakhs)		Deposits (Rs. in Lakhs)	
		1965-66	1968-69	1965-66	1968-69	1965-66	1968-69	1965-66	1968-69
1	2	3	4	5	6	7	8	9	10
1	Primary Coir-Societies ..	20	NA	4678	NA	0.66	NA	0.07	NA
2	Thondu Vyvasaya Co-operative Societies ..	1	NA	237	NA	0.07	NA	—	NA
3	Central Coir Marketing Societies ..	—	NA	—	NA	—	NA	—	NA
4	Mats and Mattings-factory Co-operative Societies ..	1	NA	50	NA	0.03	NA	—	NA
5	Husk retting Union ..	—	NA	—	NA	—	NA	—	NA
	Total ..	22	NA	4965	NA	0.76	NA	0.07	NA

Source: Special Officer for Coir.

* The data for 1968-69 are not available separately for Kottayam District.

TABLE 7.4 (Concl'd.)
Coir Co-operative Societies (Industrial)

Sl. No.	Type of Societies	Borrowings (Rs. in lakhs)		Reserve Funds (Rs. in lakhs)		Other Funds (Rs. in lakhs)		Total working capital (Rs. in lakhs)	
		1965-66	1968-69	1965-66	1968-69	1965-66	1968-69	1965-66	1968-69
		11	12	13	14	15	16	17	18
1	2								
1	Primary Coir Societies ...	2.25	NA	0.08	NA	0.06	NA	3.12	NA
2	Thondu vyayasaya Co-operative Societies ..	0.17	NA	0.05	NA	—	NA	0.29	NA
3	Central Coir marketing Societies ..	—	NA	—	NA	—	NA	—	NA
4	Mats & Matings Factory Co-operative Societies ..	0.47	NA	—	NA	—	NA	0.50	NA
5	Husk retting Unions ..	—	NA	—	NA	—	NA	—	NA
	Total	2.89	NA	0.13	NA	0.06	NA	3.91	NA

VII. BANKS AND CO-OPERATIVE SOCIETIES

TABLE 715

Handloom Weaver's Co-operative Societies (Industrial)
(Rs. in lakhs)

Sl. No.	Items	Primary Weavers Co-operative Societies	
		1965-66	1969-70 *
1	2	3	4
1	No. of Societies ..	10	10
2	No. of Members ..	971	1080
3	Paid up share capital ..	0.79	1.14
4	Deposits ..	0.12	1.41
5	Borrowings ..	1.86	
6	Other Funds ..	0.11	
7	Total working capital ..	8.05	2.55
8	Loans issued to members ..	0.03	NA
9	Loans repaid ..	0.10	NA
10	Loans outstanding ..	0.49	NA

Source: Director of Industries & Commerce.

* Includes Industrial Weavers Co-operative Societies.

VIII. INDUSTRIAL STATISTICS

TABLE No. 8.1

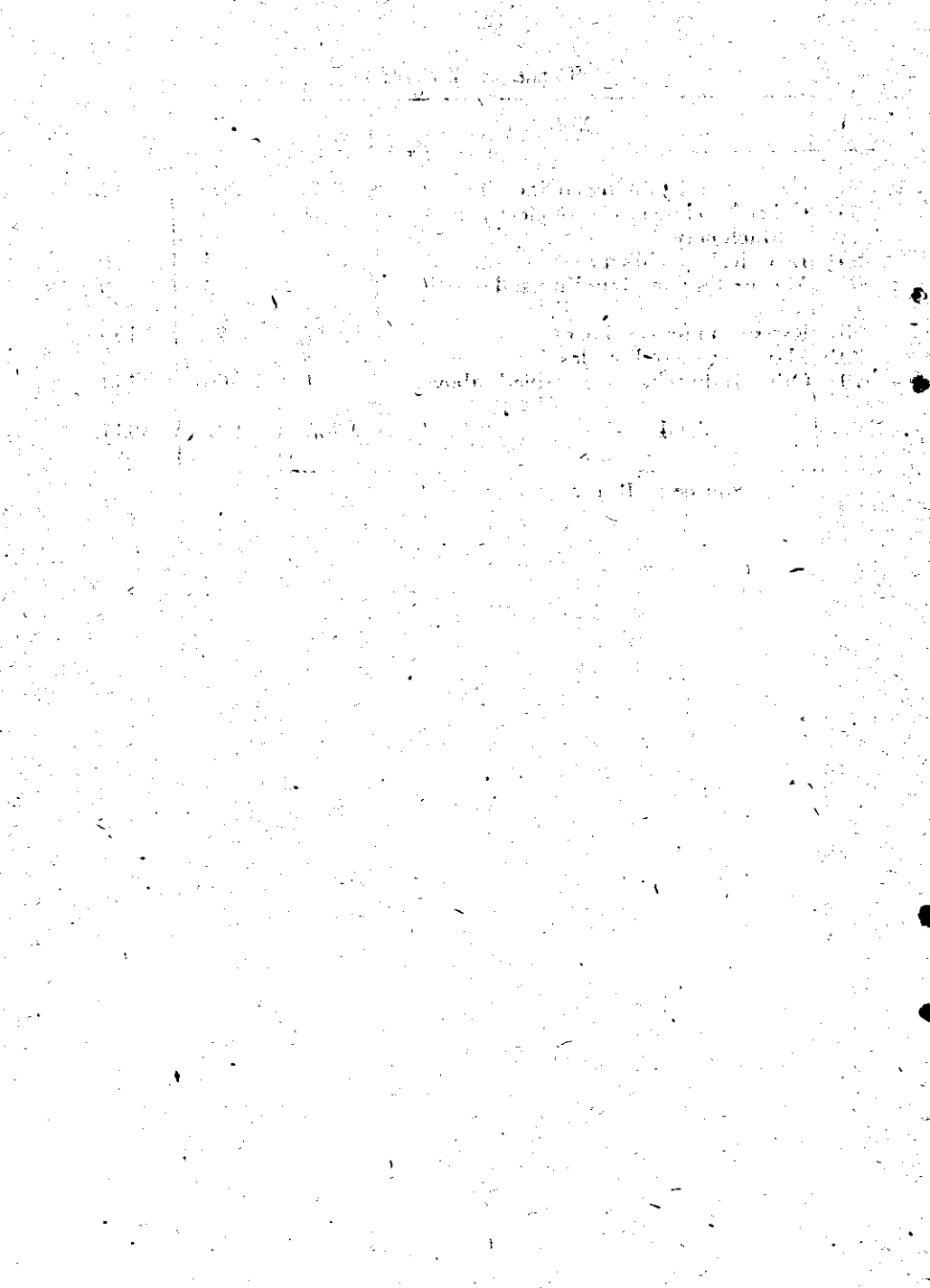
Distribution of working factories (Registered)

Sl. No.	Industry	District		State 1969
		1966	1969	
1	2	3	4	5
1	Canning and Preservation of fruits and vegetables	1	3	9
2	Do. fish and other sea food	—	—	27
3	Rice mills flour mills	—	—	85
4	Sugar	—	—	4
5	Oil Mills	13	16	260
6	Tea Factories	83	82	121
7	Cashew Factories	1	—	264
8	Other food articles except beverages	1	—	—
9	Beedi and Cigars	—	—	41
10	Cotton textiles	—	—	193
11	Knitting	—	1	9
12	Coir	1	1	144
13	Other textiles	—	—	1
14	Umbrellas	—	—	16
15	Saw mills	19	19	297
16	Plywood	5	5	14
17	Other Timber Industries	14	10	77
18	Paper Board Straw Board	2	1	5
19	Paper Mills	—	—	6
20	Printing and Binding	30	40	234
21	Rubber and rubber products	41	27	71
22	Artificial Manures	2	4	12
23	Pharmaceuticals	1	—	23
24	Soap	—	—	7
25	Other Chemicals including matches	3	5	69
26	Petroleum Refineries etc.	—	—	5
27	Bricks and Tiles	3	3	227
28	Glass	—	—	2
29	Pottery, China and Earthenware	—	—	8
30	Cement	1	1	3
31	Basic Metal Industries	1	1	36
32	Metal Product except Machinery and Transport equipment	9	9	32
33	Agricultural implement	—	—	9

TABLE 8.1 (contd.)

1	2	3	4	5
34	General and Jobbing engineering	9	12	95
35	Other Machinery except electrical Machinery	1	—	—
36	Electrical Machinery	3	1	10
37	Marine Engines, building and repair- ing	—	—	9
38	Repair of motor vehicles	17	21	154
39	Manufacture of Bicycles	—	—	6
40	Other Industries not classified above	4	66	450
	Total	265	288	3035

Source : B. E and S.



IX. LABOUR STATISTICS

Labour and employment details with special emphasis on industries and factories are given in this section. The tables covering on average daily number of workers in factories, employment in plantation, employment in shops and commercial establishments, industrial disputes, agricultural wages and employment exchange statistics etc., are furnished.

IX. LABOUR STATISTICS

TABLE 9.1

Average daily number of workers employed in Registered Factories

Sl. No.	Industry	District		State 1969
		1966	1969	
1	2	3	4	5
1	Canning and Preservation of fruits and vegetables	22	174	538
2	Do. Fish and other sea food	—	—	1535
3	Rice mills flour mills	—	—	997
4	Sugar	—	—	1100
5	Oil Mills	69	78	1613
6	Tea Factories	4185	3627	5131
7	Cashew factories	100	—	97494
8	Other food articles except beverages	18	—	—
9	Beedi and Cigar	—	—	1140
10	Cotton textiles	—	—	15192
11	Knitting	—	7	540
12	Coir	16	14	4247
13	Other textile	—	—	911
14	Umbrellas	—	—	374
15	Saw mills	280	157	4260
16	Plywood	370	416	1536
17	Other Timber Industries	358	122	1471
18	Paper Board Straw Board	44	9	128
19	Paper Mills	—	—	2690
20	Printing and Binding	710	757	5232
21	Rubber and rubber products	1199	1066	2710
22	Artificial Manures	104	160	4405
23	Pharmaceuticals	15	—	942
24	Soap	—	—	1027
25	Other Chemicals	80	180	8067
26	Petroleum Refineries etc.	—	—	609
27	Bricks and Tiles	68	64	12618
28	Glass	—	—	369
29	Pottery, China and Earthenware	—	—	786
30	Cement	399	307	307
31	Basic Metal Industries	9	9	2043
32	Metal Product except Machinery and Transport equipment	79	64	243
33	Agricultural implement	—	—	368

TABLE 9.1 (contd.)

1	2	3	4	5
34	General and Jobbing engineering	363	318	2579
35	Other Machinery except electrical Machinery	7	—	—
36	Electrical Machinery	149	6	1096
37	Marine Engines, building and Repairing	—	—	1380
38	Repair of Motor Vehicles	396	454	4794
39	Manufacture of Bicycles	—	—	130
40	Other Industries not classified above	154	580	13662
	Total	9194	8569	204264

Source : B. E. and S.

IX. LABOUR STATISTICS

TABLE 9.2

Employment in plantation (Daily average)

Sl. No.	Industry/Plantation	District		Kerala State
		1965-66	1969-70	1969-70
	1	2	3	4
	Plantation			
	Rubber Plantation			
	Garden labour permanent		15978	63876
	Outside labour do.		5066	26515
	Do. temporary		7904	39398
	Total	4518	28948	129789
	Coffee Plantation			
	Garden labour permanent		1875	19579
	Outside labour do.		175	16711
	Do. temporary		2031	5050
	Total	120	4081	41340
	Tea Plantation			
	Garden labour in field		43249	59653
	Do. factory		3653	5117
	Outside labour in field		4889	7905
	Do. factory		95	283
	Total	30440	51886	72958

Source: B. E. & S.

IX. LABOUR STATISTICS
Factory Employment
TABLE 9.3
Industrial Disputes

INDUSTRY	1966					1970					
	Number of					Number of					
	Disputes	Workers involved	Mandays lost	Disputes	Workers involved	Disputes	Workers involved	Mandays lost	Disputes	Workers involved	Mandays lost
1	2	3	4	5	6	7	8	9	10		
Plantation	601	11150	19076	17	2878	8716	12	4824	34203		
Toddy tapping	56	556	482	3	40	566	15	2023	43013		
Timber (Saw mills)	—	—	—	1	80	3660	—	—	—		
Rubber	14	150	8250	2	619	25394	1	500	8000		
Matches	4	55	—	—	—	—	—	—	—		
Tile	4	52	36	—	—	—	—	—	—		
Plywood	14	5	140	—	40	80	—	3000	15000		
Motor Transport	29	190	685	1	—	—	2	—	—		
Cement	—	—	—	—	—	—	—	—	—		
Coir	4	30	—	—	—	—	—	—	—		
Cashew nut	—	—	—	—	—	—	—	—	—		
Textiles	—	—	—	—	—	—	—	—	—		
Others	23	347	808	10	1424	31919	13	12725	25240		
Total	749	12535	29477	34	5001	70335	43	23072	125456		

Source: B. E. & S.

IX. LABOUR STATISTICS

A. Factory Employment

TABLE 9.4

Agricultural wages (daily average)

CATEGORY	Year	District		Kerala State	
		Normal hours of work	Average wages Rs.	Normal hours of work	Average wages Rs.
1	2	3	4	5	6
Carpenter	1965-66	8	5.75	8	7.51
	1970-71	8	7.63		
Mason	1965-66	8	5.66	8	7.48
	1970-71	8	7.67		
Field Labourer (Men)	1965-66	8	1.71	8	5.09
	1970-71	8	5.04		

Source: B. E. & S.

IX. LABOUR STATISTICS
B. Employment Exchange Statistics

TABLE 9.4

**Number of applicants on the Live Register by
 Main Occupational Groups
 (Category-wise)**

Occupation Category	District	
	1965-66	1970-71
1	2	3
1. Professional, Technical and related workers ..	1104	3245
2. Administrative, Executive and Managerial workers ..	78	383
3. Clerical and related workers ..	513	1999
4. Sales workers	4
5. Farmers, quarrymen and related workers ..	129	82
6. Miners, Quarrymen and related workers ..	1	..
7. Workers in transport and communications—occupations ..	344	905
8. Craftsmen, Production Process Workers and labour not elsewhere classified ..	702	1004
9. Service, Sports and Recreation workers ..	91	383
10. Workers not classifiable by occupation ..	8922	20626
Total ..	11884	28631

Source: Directorate of Employment Exchanges.

IX. LABOUR STATISTICS
B. Employment Exchange Statistics

TABLE 9.5

Registration and placements effected by Employment Exchange

District/ State	Total Number on live register		Number of fresh registration		No. of vacancies notified		Number of placements effected	
	1965-66	1970-71	1965-66	1970-71	1965-66	1970-71	1965-66	1970-71
1	2	3	4	5	6	7	8	9
Kottayam State	11884	24485	13161	18825	1539	1492	1383	1029
		300163		220952		24613		16951

Source: Directorate of Employment Exchanges.

X. PRICE STATISTICS

The whole prices of important commodities at various centres in the State and the consumer price indices for the working class are given in the following pages under this section. Monthwise details for the year 1971 are furnished.

X. PRICE STATISTICS

TABLE 10.1

Wholesale Prices of Important Commodities at Important Centres

Commodity	Centre	Unit	Ave- rage 1971	Wholesale prices during 1971			
				Jan.	Feb.	March	April
1	2	3	4	5	6	7	8
Copra	Kottayam	Qtl.	386.19	495.00	402.50	393.75	396.00
"	Changanacherry	"	384.31	484.00	400.00	386.25	393.00
Coconut oil	Kottayam	"	581.06	741.00	610.00	576.25	593.00
"	Changanacherry	"	579.90	725.00	625.00	571.67	595.00
"	Pala	"	576.30	735.00	612.50	578.75	595.00
Coconut oil cake	Changanacherry	"	78.22	110.42	85.00	85.00	83.45
Black pepper	Pala	"	632.23	608.00	620.50	648.75	696.00
Turmeric	Pala	"	113.89	..	100.00	116.67	125.00
Banana	Kottayam	1000 Nos.	194.88	133.00	160.00	200.00	200.00
"	Changanacherry	"	174.44	118.00	135.00	162.50	168.00
"	Pala	"	190.35	164.00	165.00	172.50	178.00
Coconut without husk	Kottayam	"	559.17	680.00	612.50	618.75	640.00
Rubber	Kottayam	Qtl.	429.26	475.50	467.50	463.13	453.00
Tapioca	Changanacherry	"	25.25	27.80	27.50	26.00	19.40

Source : BES

TABLE 10.1—(contd.)

Commodity	Centre	Unit	Average 1971	Wholesale prices during 1971			
				May	June	July	Aug.
1	2	3	4	9	10	11	12
Copra	Kottayam	Qtl.	386.19	368.75	366.25	375.00	391.25
"	Changanacherry	"	384.31	366.25	363.75	369.00	396.25
Coconut oil	Kottayam	"	581.06	556.25	533.75	565.00	588.75
"	Changanacherry	"	579.90	558.33	560.00	570.00	583.75
"	Pala	"	576.30	551.25	550.00	559.00	583.75
Coconut oil cake	Changanacherry	"	178.22	81.67	82.50	88.75	86.25
Black pepper	Pala	"	632.23	652.50	681.25	701.00	687.50
Turmeric	Pala	"	113.89				
Banana	Kottayam	1000 Nos.	194.88	255.00	240.00	200.00	207.50
"	Changanacherry	"	174.44	208.75	250.00	211.00	205.00
"	Pala	"	190.35	222.50	235.00	217.00	200.00
Coconut without husk	Kottayam	"	559.17	566.25	543.75	490.00	600.00
Rubber	Kottayam	Qtl.	429.26	443.75	436.25	434.00	411.88
Tapioca	Changanacherry	"	25.25	16.00	19.00	27.50	27.00

Source: BES

TABLE 10.1—(contd.)

Commodity	Centre	Unit	Average 1971	Wholesale prices during 1971			
				Sept.	Oct.	Nov.	Dec.
1	2	3	4	13	14	15	16
Copra	Kottayam	Qtl.	386.19	375.00	373.00	353.75	344.00
"	Changanacherry	"	384.31	378.75	370.00	357.50	347.00
Coconut oil	Kottayam	"	581.06	580.00	561.00	528.75	519.00
"	Changanacherry	"	579.06	580.00	552.50	532.50	514.95
"	Pala	"	576.30	572.50	550.00	518.75	509.00
Coconut oil cake	Changanacherry	"	78.22	82.50	79.38	82.50	91.25
Black pepper	Pala	"	632.23	642.50	598.00	558.75	492.00
Turmeric	Pala	"	113.89				
Banana	Pala	1000 Nos.	194.88	220.00	180.00	185.00	158.00
"	Kottayam	"	174.44	175.00	170.00	150.00	140.00
"	Changanacherry	"	190.35	196.25	176.00	190.00	168.00
Coconut without husk	Pala	"	559.17	568.75	475.00	450.00	465.00
Rubber	Kottayam	Qtl.	429.26	386.88	402.50	398.75	378.00
Tapioca	Changanacherry	"	25.25	27.00	27.80	30.00	28.00

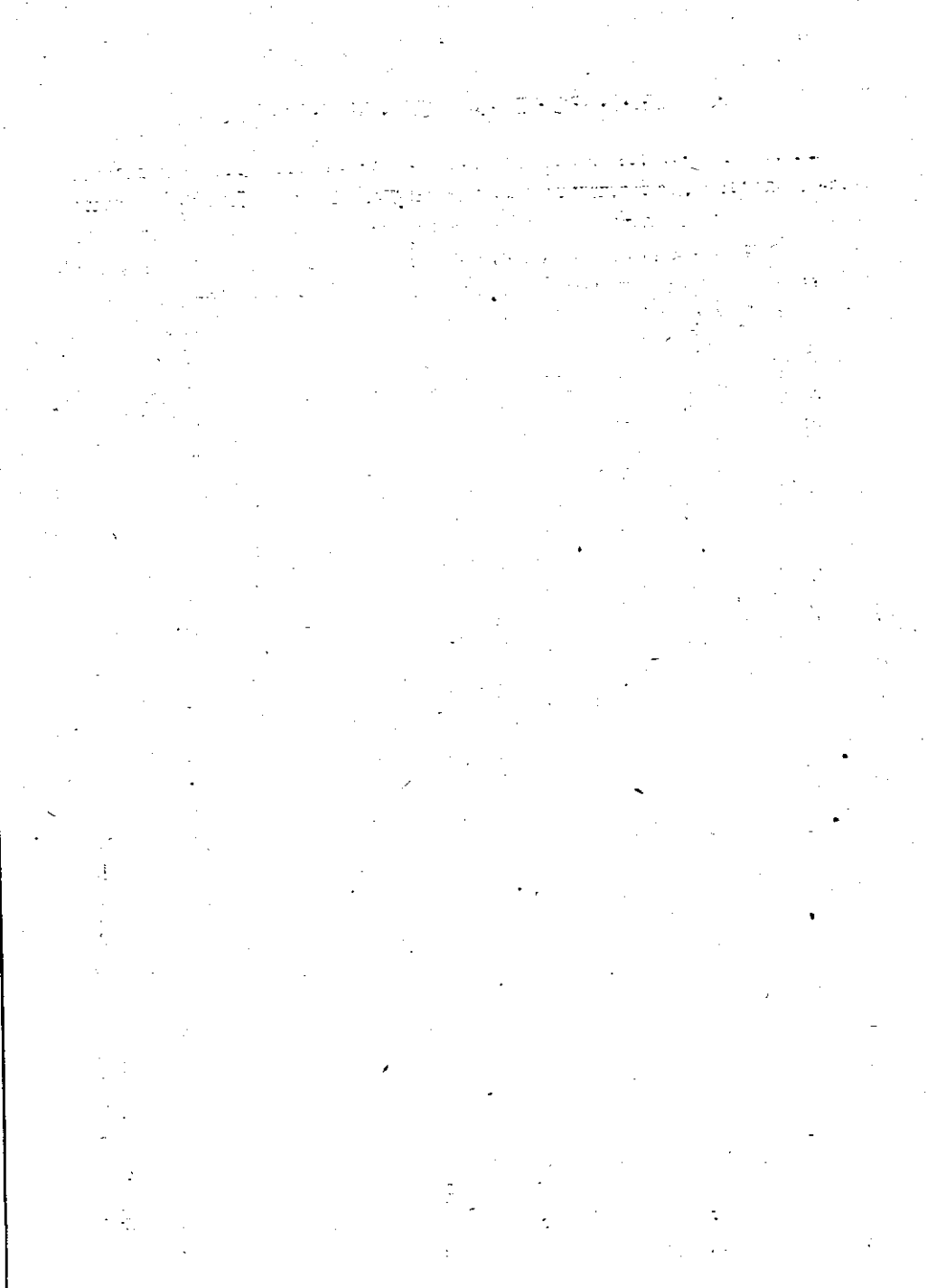
X. PRICES STATISTICS

TABLE 10.2

Consumer Price Indices for Working Class for the Centres in the District

Name of Centre/State	Average 1966	Average 1971	Working Class cost of living index number 1971											
			Jan.	Feb	Mar	Apr.	May	June	July	Aug	Sept	Oct.	Nov	Dec.
1	2	3	4	5	6	7	8	9	10	11	12	13	14	15
Kottayam	689	872	868	854	849	854	858	866	868	873	885	890	894	904
Changanacherry	691	851	849	836	832	836	840	845	847	851	863	866	871	881
Munnar	604	823	805	798	798	806	810	819	823	826	838	842	846	860
State	673	857	851	838	835	838	843	851	853	858	871	875	879	888

Source : BE & S
 Note. Base price in August 1939=100



XI. TRANSPORT AND COMMUNICATION

Details on various Statistics covering the various aspects of different types of transport and communications are given in this section. Information on length of metalled and non-metalled roads, number of motor vehicles, number of posts and telegraph offices and radio licenses, length of railway lines working of State Transport Corporation and accidents on road are included here.

XI. TRANSPORT AND COMMUNICATION
TABLE 11.1
Length of Metalled and Non-metalled Roads (in Kilometres)

Type of Road	District							
	Public works Department		Others			Total		
	1965-66	1967-68	1965-66	1967-68	1965-66	1967-68	1965-66	1967-68
1	2	3	4	5	6	7		
Cement or concrete	18.00	18.26	9.00	3.67	27.00	21.93		
Bituminous or tarred	441.00	607.03	143.00	109.20	584.00	716.23		
Water bound Macceadum	644.00	624.68	29.00	89.11	673.00	713.79		
Lower Type	292.00	278.84	225.00	208.76	517.00	487.60		
Total	1395.00	1528.81	406.00	410.74	1801.00	1939.55		
STATE		14653.76		3683.91		18337.67		

Source:—P. W. D., Irrigation, Electricity Board, Forest & Municipalities.
 Roads under Panchayats are not included.

XI. TRANSPORT AND COMMUNICATION

TABLE 11.2

Number of Registered Motor Vehicles on Road

Sl. No.	Type of vehicles	District		State
		1965-66	1970-71	1970-71
1.	Goods Vehicles	1339	1728	13162
2.	State Carriages (Buses)	359	971	6563
3.	Taxi Cars	672	1045	8848
4.	Cars (Private)	3877	4134	33294
5.	Motor cycles	1241	1464	15117
6.	Auto-rickshaws	20	93	1062
7.	Tractor Trailer	19	250	2046
8.	Others	1	1265	6142
	Total	7528	10950	86234

Source:—Economic Review Kerala, 1971.

XI. TRANSPORT AND COMMUNICATION
TABLE 11.3
(Posts and Telegraph Offices and Radio Licensees.)

		DISTRICT		STATE
		1965-66	1970-71	1970-71
(1)	(2)	(3)	(4)	(5)
1.	Number of Posts Offices:			
	(i) Head Post Offices	2	3	25
	(ii) Dept. Sub post offices	112	130	1058
	(iii) Experimental Dept. Branch Offices	256	339	2776
2.	Number of Telegraph offices	74	83	692
3.	Number of Telephone connections	NA	3875	37968
4.	Number of Telephone Exchanges	NA	35	234
5.	Number of Public Call Offices			
	(i) Trunk Call Offices	78	12	122
	(ii) Local Call Offices	5	112	814
6.	Number of letter boxes:			
	(i) Urban	411	273	2498
	(ii) Rural	324	817	7772
7.	Number of radio licensees	7342	23406	285224

Source: Post Master General, Kerala.

XI. TRANSPORT AND COMMUNICATION

TABLE 11.4

Length of Railways (in Kilometres)

Type of Gauge	District	Kerala State
	1969-70	1969-70
Broad gauge	..	553
Meter gauge	49	335
Mixed gauge
Total	49	888

Source: Divisional Manager, Olavakkot, Madurai

XI. TRANSPORT AND COMMUNICATION

TABLE 11.5

Working of State Road Transport Corporation

Description	District		Kerala State
	1965-66	1970-71	1970-71
(1)	(2)	(3)	(4)
No. of routes	29	155	1294
Route Distance (Kilometres)	1558	8421	51189
Gross Kilometres operated	6242544	17106298	106067184
Effective Kilometres operated	6225333	17051645	104509640
Dead Kilometres operated	17211	54653	1557544
Percentage of dead kilometres to effective kilometres	0.3	0.3	1.4

Source: K. S. R. T. C.

Note: KTM. Transport Dist. is given under KTM. Dist.

XI. TRANSPORT AND COMMUNICATION

TABLE 11.6

Number of Vehicles involved in Accidents on Road, persons injured, killed

District	No. of vehicles involved		No. of accidents		No. of persons injured		No. of persons killed	
	1969-70	1970-71	19-9-70	1970-71	1969-70	1970-71	1969-70	1970-71
1	2	3	4	5	6	7	8	9
District	500	567	461	527	607	638	70	62
State	4756	4902	4258	4387	4349	4785	621	627

Source: Inspector General of Police, Kerala.

THE UNIVERSITY OF CALIFORNIA LIBRARY

1000 UNIVERSITY AVENUE, LOS ANGELES, CALIF. 90024



XII. JUDICIAL AND ADMINISTRATIVE STATISTICS

This section mainly deals with the details on Police Statistics and outposts, strength of police force by categories, serious crimes and property stolen and recovered.

XII. JUDICIAL AND ADMINISTRATIVE STATISTICS

TABLE 12.1

Police Stations and Out posts

District	Number of police stations		No. of out posts	
	1965—66	1970	1965—66	1970
1	2	3	4	5
District	25	27	24	22
State		249		120

Source : Inspector General of Police, Kerala.

XII. JUDICIAL AND ADMINISTRATIVE STATISTICS

TABLE 12.2

Strength of Police Force in the District by Categories

Year	Deputy Inspector General	Superintendents	Assistant Superintendents	Deputy Superintendents	Inspectors	Sub-Inspectors	Sergents	Assistant Sub-Inspectors/Jamadar	Head Constables	Constables	Total
	2	3	4	5	6	7	8	9	10	11	12
1965-66	..	1	..	3	8	34	..	5	183	1275	1509
1969	..	1	2	1	9	34	..	8	189	1079	1323
State (1969)	3	18	6	36	119	417	..	66	1985	10804	13454

Source : Inspector General of Police Kerala.

XII. JUDICIAL AND ADMINISTRATIVE STATISTICS

TABLE 12.3

Serious Crimes

Sl. No.	Item of crime	District		Kerala State
		1965-66	1970	
1	2	3	4	5
1	Rioting	83	218	4268
2	Offences relating to Coins	1	7	59
3	Offences relating to currency and bank notes	36	53	372
4	Murder	1
5	Culpable homicide not amounting to murder	75
6	Administering of stupefying drugs	..	8	42
7	Kidnapping and abductions	3	5	154
8	Dacoity	4	25	3414
9	Robbery	235	368	196
10	House breaking and thefts	12	20	381
11	Cheating	34	38	5395
12	Breach of trust	334	498	17260
13	Thefts	324	1552	
14	Other crimes			
	Total	1066	2792	31617

Source : Inspector General of Police.

XII. JUDICIAL AND ADMINISTRATIVE STATISTICS

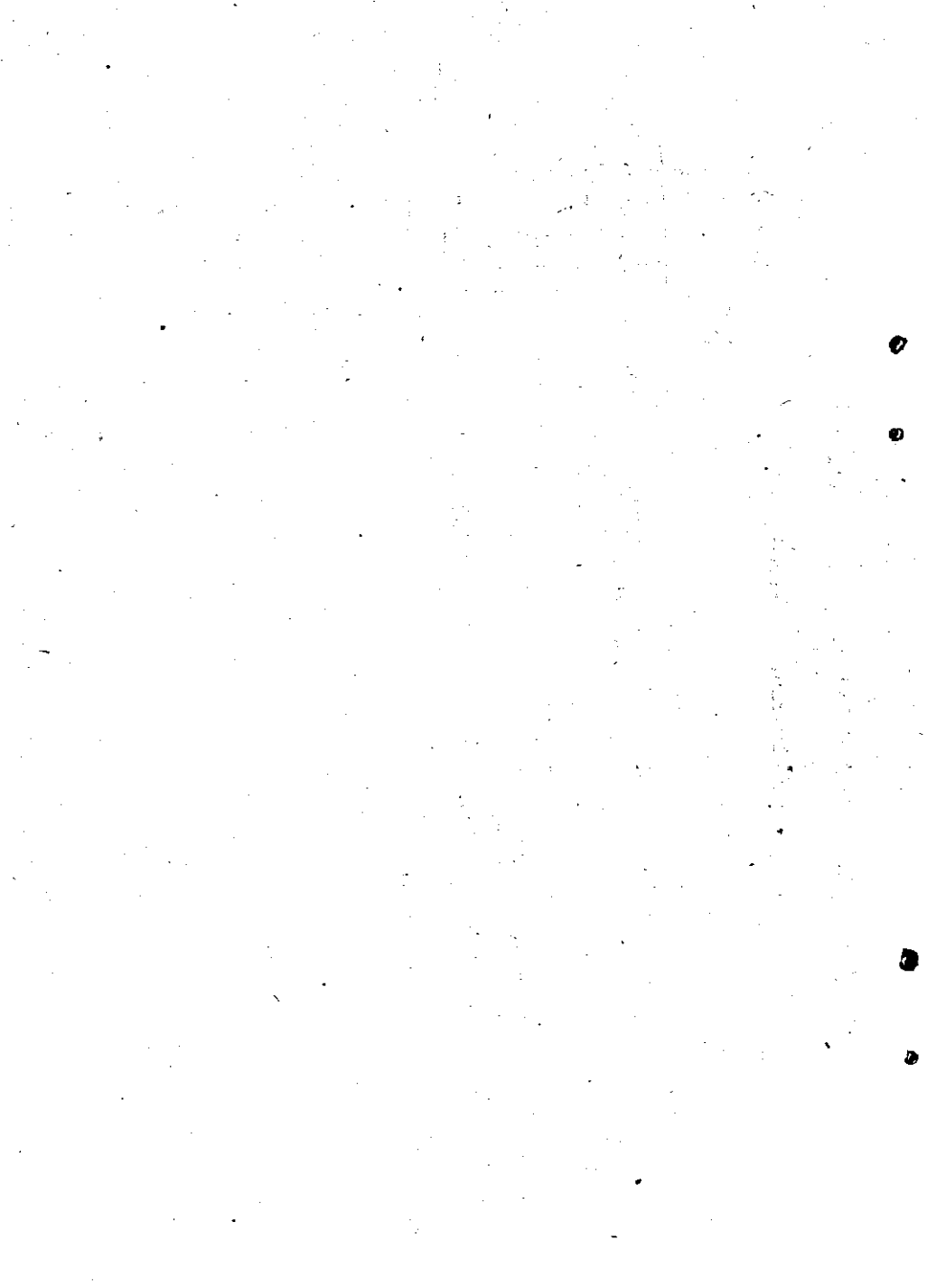
TABLE 12.4

Property Stolen and Recovered

(in Rs.)

Year	District			Kerala State		
	Stolen	Recovered	Percentage	Stolen	Recovered	Percentage
	1	2	3	4	5	6
1965-66	172220.00	43935.00	25.0			
1970	443325.00	143596.00	32.0	5427152.73	1394393.58	25.7

Source : Inspector General of Police.



XIII. LOCAL BODIES

The section on local bodies furnishes information relating to population, income and expenditure of Municipalities and Panchayats. The table covering the name & number of Panchayats and Villages with their population in the District is also included.

XIII. LOCAL BODIES

TABLE 13.1

Population Income and Expenditure of Municipalities

(Rs. in '000)

Name of Corporation/Municipality	Population 1971	Income									
		Municipal rates and taxes		Other receipts		Total Income		Opening balance		Grand total	
		65-66	70-71	65-66	70-71	65-66	70-71	65-66	70-71	65-66	70-71
1	2	3	4	5	6	7	8	9	10	11	12
Changana-cherry	48545	237.23	550.00	153.75	735.81	390.98	1285.81	233.29	272.12	624.27	1557.93
Kottayam	59714	1032.98	1513.75	917.58	1692.94	1950.56	3206.69	563.97	692.84	2514.53	3899.53
Palai	20273	119.15	214.69	168.22	688.88	287.37	903.57	221.36	71.86	508.73	975.43
Vaikom	20014	78.27	74.50	67.86	214.07	146.13	288.57	67.85	51.12	213.98	339.69

Source: Director of Municipalities.

TABLE 13.1 (Contd.)

Name of Corporation/ Municipality	Expenditure									
	Current expenditure		Capital expenditure and others		Total expenditure		Closing balance		Grand total	
	65-66	70-71	65-66	70-71	65-66	70-71	65-66	70-71	65-66	70-71
	13	14	15	16	17	18	19	20	21	22
Changanacherry	309.82	721.26	112.37	688.25	422.19	1409.51	202.07	148.42	624.27	1557.93
Kottayam	708.88	1881.16	1138.62	1336.87	1847.50	3218.03	667.03	681.50	2514.53	3899.53
Palai	144.92	316.50	193.74	578.03	338.66	894.53	170.07	80.90	508.73	975.43
Vaikom	124.69	230.34	35.17	54.50	159.86	284.84	54.12	54.85	213.98	339.69

XIII. LOCAL BODIES

TABLE 13.2

Income and Expenditure of Panchayats

(Rs. in '000)

Year	No. of Panchayats	Income			Expenditure			
		Opening balance	Receipts	Total	Expenditure	Closing balance		
		3	4	5	6	7		
1	2							
1965—66	89	1899.635	2780.607	4680.242	2709.876	1970.365		
1969—70	97	3205.489	5877.760	9083.249	5431.945	3651.304		
1970—71	98	2960.675	9544.851	12505.526	5217.530	7287.996		

Source: District Panchayat Office.

XIII. LOCAL BODIES

TABLE 13.3

Panchayats, Villages and Population

Name of Taluk	Name of Panchayat	Name of Village	Population (1971 census)
1	2	3	4
Kottayam	1. Vijayapuram	Vijayapuram	39608
	2. Ayarkunnam	Ayarkunnam, Manarkadu	24009
	3. Puthuppally	Puthuppally	23217
	4. Kumarakam	Kumarakam	18532
	5. Thiruvarpvu	Thiruvarpvu	22270
	6. Nattakom	Nattakom, Kottayam	32024
	7. Panachikadu	Panachikadu	27468
	8. Pampady	Pampady	32095
	9. Kooropadu	Kooropadu	17604
	10. Akalakunnam	Akalakunnam	18169
	11. Pallikkathodu	Akalakunnam, Anickadu	
		Elikulam	12117
	12. Elikulam	Elikulam	19943
	13. Arpookara	Kaipuzha	15959
	14. Athirampuzha	Athirampuzha	28299
	15. Aymanam	Aymanam	25756
	16. Ettumannur	Athirampuzha, Ettumanoor	32492
	17. Kumaranalloor	Perumpayikadu, Vijayapuram	29545
18. Neendoor	Kaipuzha, Onamthuruthu	18335	
Changanacherry	1. Kangazha	Kangazha, Vazhoor	16701
	2. Vazhoor	Vazhoor, Kangazha	19089
	3. Vellavoar	Vellavoar	13388
	4. Karukachal	Karukachal, Nedumkunnam	16022
	5. Kurichi	Kurichi	21785
	6. Madappally	Madappally	24104
	7. Paipadu	Changanacherry, Thrikodithanam	17051
	8. Vakathanam	Vakathanam	26398
	9. Vazhappally	Vazhappally west, Kurichi	25900
	10. Thrikodithanam	Trikodithanam	19212
	11. Nedumkunnam	Karukachal (Portion) Nedumkunnam	17152

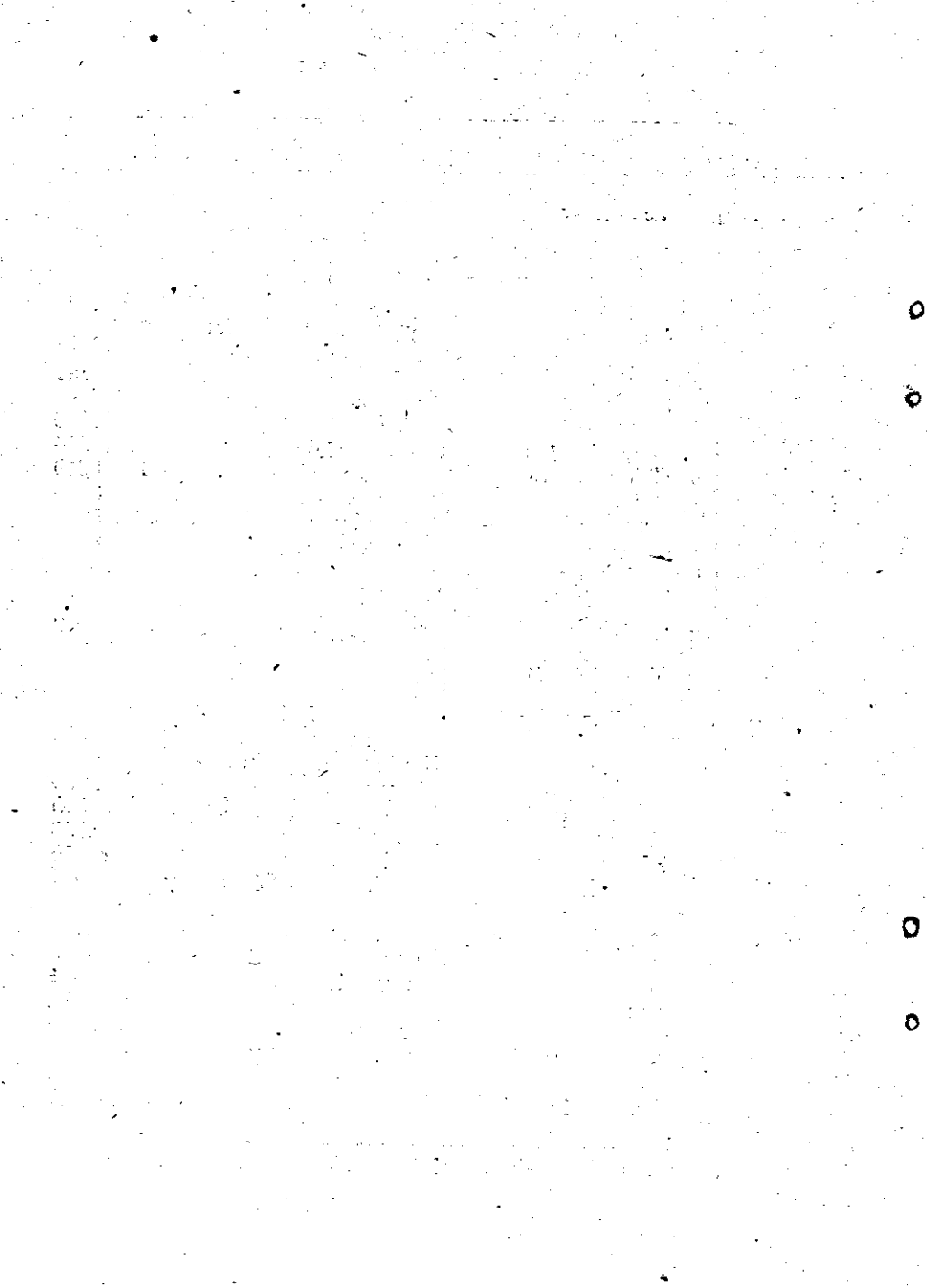
TABLE 13.3 (Contd.)

1	2	3	4
Vaikom	1. Kaduthuruthi	Kaduthuruthy	28218
	2. Manjoor	Manjoor	26110
	3. Kallara	Kallara	10629
	4. Thalayolaparmbu	Vadayar	17271
	5. Njeezhoor	Njeezhoor	16173
	6. Mulakulam	Mulakulam	19839
	7. Velloor	Velloor	15061
	8. Chempu	Champu	15644
	9. Maravanthuruthu	Kulasekharamangalam	17725
	10. Thalayazham	Thalayazham	16825
	11. T. V. Puram	Vaikom	16115
	12. Udayanapuram	Naduvilla, Vadakkemuri	20041
	13. Vechoor	Vechoor	12623
Meenachil	1. Kuravilangadu	Kurvilangadu	15071
	2. Kanakkary	Kanakkari	17376
	3. Kidangoor	Kidangoor	22323
	4. Elakkadu	Elakkadu, Kurichithanam	24110
	5. Uzhavoor	Uzhavoor, Veliyannur	25624
	6. Ramapuram	Ramapuram, Vellichira	27007
	7. Bharananganam	Bharananganam	15992
	8. Kodanadu	Kodanadu, Ramapuram, Vellilappally	16720
	9. Karoor (Puadu)	Lalam, Vellichira	18190
	10. Kozhuvanal	Meenachil, Puliyanur	11464
	11. Meenachil	Poovarani, Meenachil	15664
	12. Mutholi	Meenachil, Puliyanur	12828
	13. Erattupettah	Kondoor, Poonjarnadu- bhagom	12923
	14. Melukavu	Melukavu	8848
	15. Poonjar	Poonjar	9442
	16. Poonjarthekkekkara	Poonjarthekkekkara	15315
	17. Thalappalam	Thalappalam	13166
	18. Theekoyi	Thalappalam	8659
	19. Thidanadu	Kondoor	18227
	20. Valiyakumaramau- galam		5579
	21. Thalanadu	Thalanadu	7766
Devikulam	1. Munnar	K. D. H. Villages	65570
	2. Marayoor	Marayoor	4553
	3. Kanthalloor	Kanthalloor, Keezhanthoor	5156
	4. Vattavadu	Vattavadu, Kollakamloor	3033
	5. Pallivasal	Pallivasal	11276

TABLE 13.3 (Contd.)

1	2	3	4
Devikulam	6. Vellathooval	Vellathooval	19500
	7. Munnamkandam	Munnamkandam	14364
	8. Kattempuzha	Munnamkandam	10893
Udumbanchola	1. Rajakadu	Rajakadu	14631
	2. Ayyappancoil	Ayyappancoil, Chakkupal- lom, Kalkoonthal	26584
	3. Santhanpara	Santhanpara	10721
	4. Kuttappana	Ayyappancoil, Pampadum- para	32050
	5. Udumbanchola	Udumbanchola	15914
	6. Chinnakkanal	Chinnakkanal	8669
	7. Rajakumari	Rajakumari	8636
	8. Bysonvally	Bysonvally	5901
	9. Nedumkandam	Nedumkandam	16587
	10. Vathikudy	Konnathody	13071
	11. Konnathody	Konnathody	22972
	12. Pampadumpara	Pampadumpara	32002
	13. Kamakshy	Kamakshy	30519
	14. Vandanmedu	Vandanmedu	26656
Kanjirappally	1. Kanjirappally	Kanjirappally, Munda- kayam	33525
	2. Parathode	Kanjirappally, Munda- kayam	26934
	3. Mundakayam	Mundakayam, Manimala	33549
	4. Erumeli	Erumeli	32756
	5. Manimala	Manimala	16579
	6. Chirakkadavu	Chirakkadavu, Cheruvally	29017
Peermedu	1. Arudai (Peermedu)	Peerumedu	22614
	2. Elappara	Elappara	23029
	3. Koottickal	Peruvanthanam	20844
	4. Kumily	Elappara	30811
	5. Upputhara	Elappara, Pasuppara	19844
	6. Vandiperiyar	Peerumedu, Periyar, Elappara	22683
	7. Peruvanthanam	Peruvanthanam	16328

Source : District Panchayat Office and Census Reports.



XIV. FORESTS

This section gives information on area of reserved forests and reserved lands and out turn of Major Forests produce.

XIV. FORESTS

TABLE 14.1

Area for Reserved Forests and Reserved Lands

Name of Division	Reserved forest (in hectares)		Reserved lands (in hectares)		Total (in hectares)	
	1965-66	1969-70	1965-66	1969-70	1965-66	1969-70
1	2	3	4	5	6	7
Kottayam	87983.9	87983.90	525.7	†642.20	88509.6	88626.10
Munnar	NA	85012.69	NA	4725.66	NA	89738.35
Periyar Game Sanctuary		56461.40		..		56461.40
Kottayam Dist.	*87983.9	229457.99	525.7*	5367.86	88509.6*	234825.85
State		875177.00		18979.00		894156.00

Source: Forest Department.

† An area of 116.50 hectares of fuel and fodder reserve includes and also covers partly Ekm. Dist.

* Relate to Kottayam Forest Division only.

XIV. FOREST

TABLE 14.2

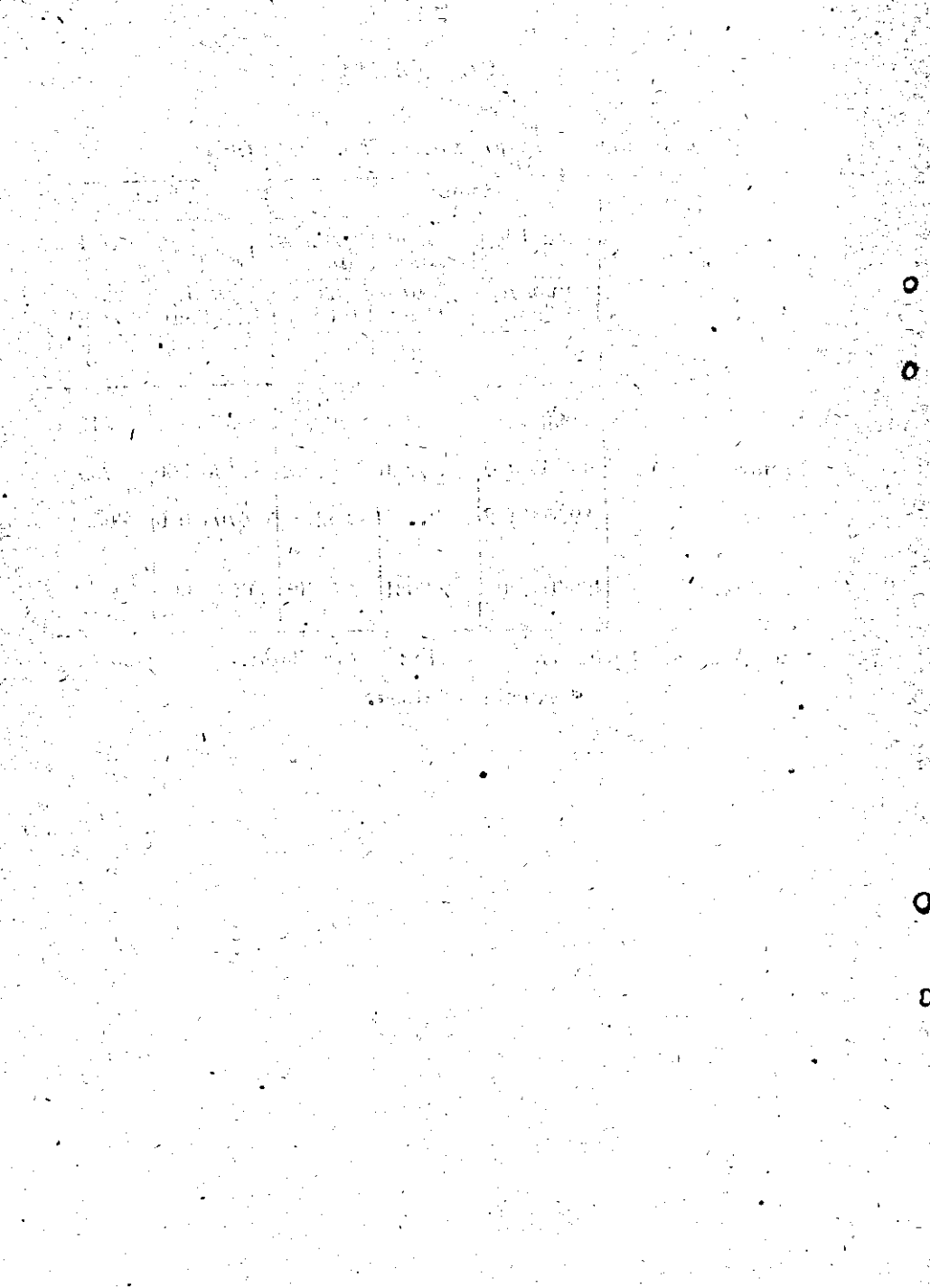
Out-turn of Major Forest Produce 1970-71

Division State	Timber			Fuel	
	Round log	Round poles	Sawn & Squared	Firewood	Firecharcoal
	Quantity (Cum.)	Quantity (No.)	Quantity (Cum.)	Quantity (M·Ton)	(No. of bags)
1	2	3	4	5	6
Kottayam	39903.192	3426	5259.782 370 *	14311.725	51256
Munnar	12935.707	7540	4.781	7198.000	73920
Hydel	39355.422	..	15252 *	110703.000	405410
STATE	498487.000	368081	5275.000	280070.000	NA

Source: Forest Department.

NA: Not available.

* Number of billets.



XV. POWER

The details on consumers and consumption of electricity are given in this section.

XV. POWER

TABLE 15.1

Consumers of Electricity

Sl. No.	Electrical Division	No. of Consumers of Electricity (excluding Street Light)		No. of Villages electrified		No. of Street Lights	
		1965-66	1970-71	1965-66	1970-71	1965-66	1970-71
1	2	3	4	5	6	7	8
1	Pallom	34716	28933	NA	10831
2	Gen: Chithirapuram	667	1987*	NA	..	NA	1574*
3	Kallarkutty	445				NA	
	Total	35828	30920	NA	88	NA	12405

* Included Peringal Kuthu Gen: Div:

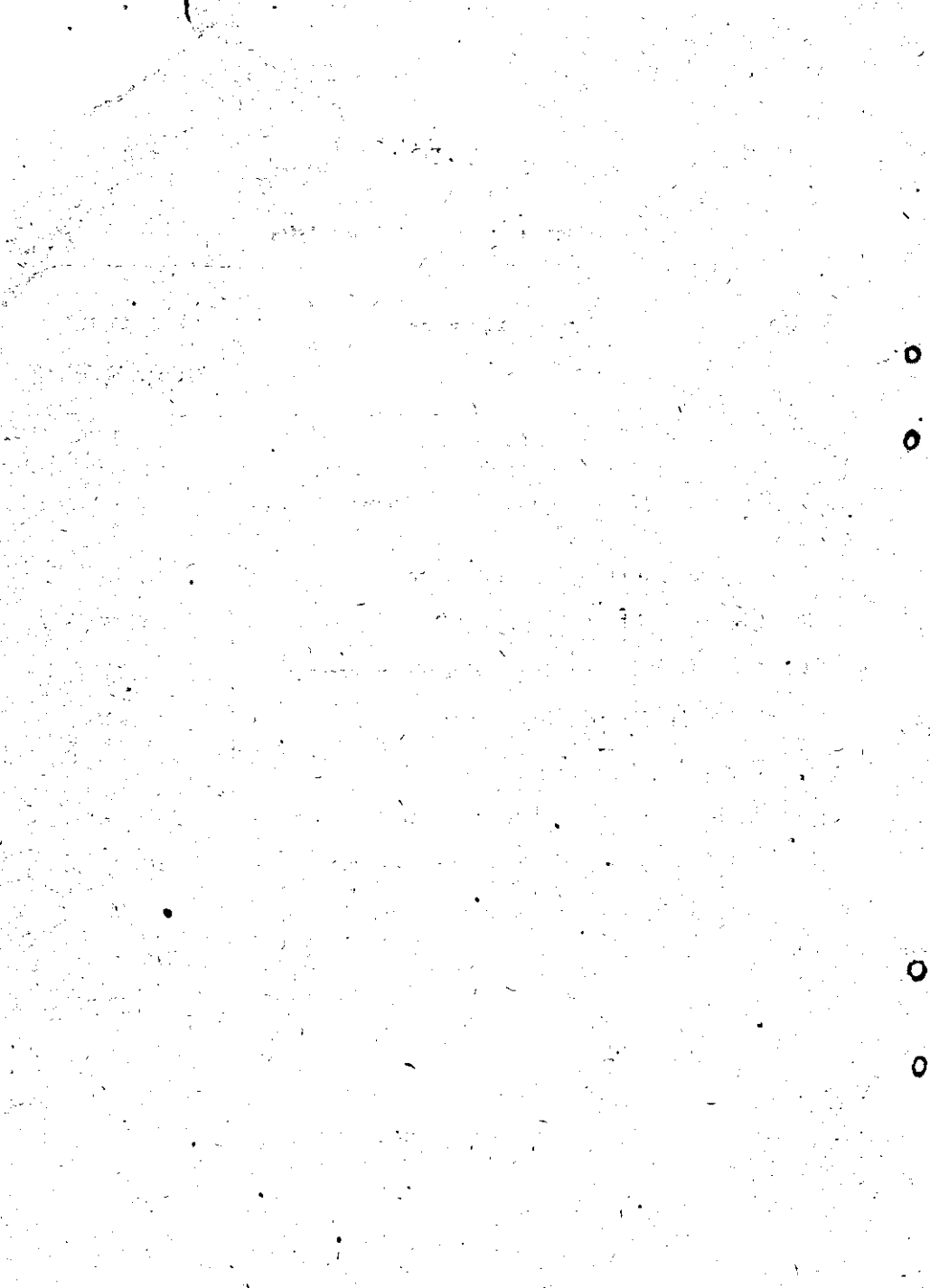
Source: K.S.E.Board.

XV. POWER
TABLE No. 15.2
Consumption of Electricity

Sl. No.	Classes of Consumers	1970-71 Million K.W.H.
1	2	3
1.	Domestic Heat & Small Power Domestic Lights and Fans	7.05
2.	Commercial Heat & Small Power	1.04
3.	Commercial Light and Small Power	4.29
4.	Industrial Power at low and medium Voltage	12.93
5.	Industrial Power at high Voltage	56.88
6.	Public Lighting	1.20
7.	Agriculture & Irrigation dewatering	10.15
8.	Public water works & Sewage pumping	0.46
9.	Bulk supplied to distributing licensees	40.24
	Total	104.24

Source: K.S.E. Board.

— Nil.



XVI: COMMUNITY DEVELOPMENT PROGRAMME

This section gives general information on C. D. Blocks with their financial achievement.

XVI. COMMUNITY DEVELOPMENT PROGRAMME

TABLE 16.1

General Details of N. E. S. Blocks—1970-71

Sl. No.	Name of Blocks	Block Headquarters	Present status as on 31-3-71	Month and Year of Opening	No. of Panchayats covered	No. of villages covered	Population (1971 census)	Area in Hectares
1	2	3	4	5	6	7	8	9
1	Uzhavoor	Kozha	Post Stage II	Oct: 1954	6	9	131511	14330
2	Pallom	Vadathoor	Do.	" 1956	7	8	187128	21618
3	Kaduthuruthy	Kaduthuruthy	Do.	April 1957	7	7	133301	18648
4	Kanjirappally	Kanjirappally	Do.	Oct: 1957	5	4	143343	32634
5	Madappally	Madappally	Do.	April 1958	6	8	150472	15005
6	Pampady	Anickadu	Do.	" 1958	5	5	99928	16435
7	Erattupettah	Erattupettah	Stage II	" 1959	8	6	99925	30550
8	Vaikom	Vaikom	Do.	Oct: 1959	6	7	98973	13002
9	Lalam	Pravithanam	Do.	April 1960	6	7	90858	18447.
10	Vazhoor	Chamampathal	Do.	" 1961	5	6	95347	22145
11	Ettumanoor	Mannanam	Do.	" 1962	6	6	150386	14652
12	Arudai	Peermedu	Do.	May 1963	11	11	303964	114314
13	Devicolam	Devicolam	Do.	" 1963	11	16	251452	165600

Source : C. D. Blocks & Census reports.

XVI. COMMUNITY DEVELOPMENT PROGRAMME

TABLE 16.2

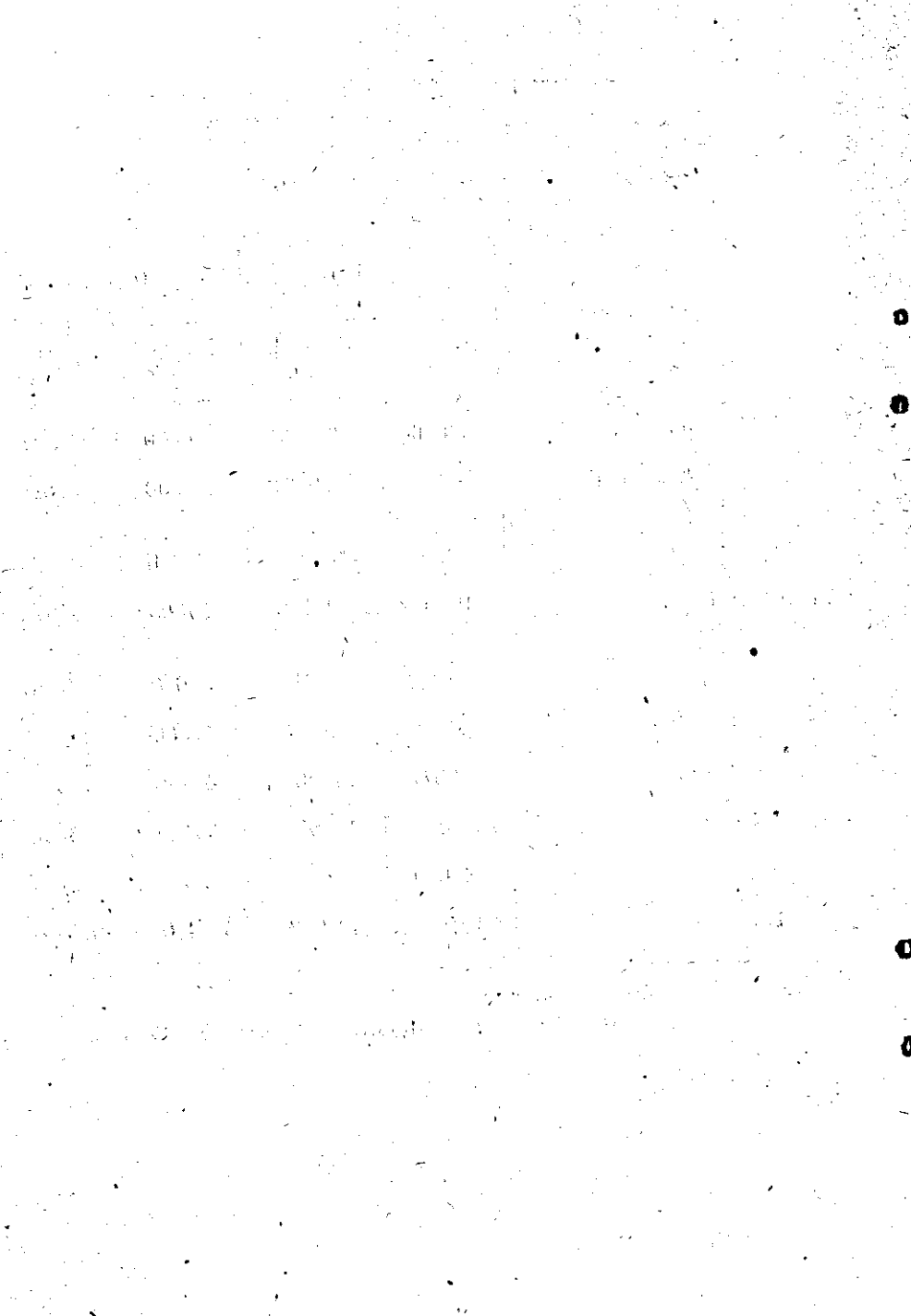
Actual Expenditure and Budget Provision of Blocks

(in Rs.)

Head of Account	1969-70		1970-71	
	Budget Provision	Expenditure	Budget Provision	Expenditure
Block Headquarters	570700	299496	130800	152710
Agriculture & Animal Husbandry	762862	460274	158500	135016
Irrigation	398769	164014	79200	49458
Health & Rural Sanitation	311469	95118	37800	24672
Education	111273	68612	18000	18158
Social Education	91139	86066	18000	20266
Communication	230877	142205	47700	57753
Industries	323407	154913	36400	23638
Housing	52000	11249	Nil	2223
Total	2822496	1481947	526400	483894

Source:—1970-71. Collectorate.

1969-70. Reports from the Block Development Officers.



XVII. REGISTRATION

Registration of documents and their value are given in this section in two tables.

XVII. REGISTRATION
TABLE 17.1
Registration of Documents

Sl. No.	Category	District		
		1965—66	1969—70	1970—71
1	2	3	4	5
1	Number of Sub Registry offices	14	17	17
2	Number of Documents presented for registration	48189	48114	47661
	Nature of Documents presented:			
3	Mortgages	11953	11048	11382
4	Sale deed	17115	19116	21082
5	Wills	509	534	596
6	Money Bonds	51	590	46
7	Other classes	18561	16826	14555
8	No. of Documents registered	48277	48121	47658
9	Value of Documents registered (Rs. in lakhs)	672.67	1459.29	1926.34

Source:—Inspector General of Registration.

XVII. REGISTRATION

TABLE 17.2

Documents Registered and Value

(Rs. in lakhs)

Sl. No.	Nature of documents	Number of documents registered					Value of documents registered		
		1965-66	1969-70	4	5	6	1965-66	1969-70	1970-71
1	2	3	4	5	6	7	8		
1	Mortgages	12103	11049	11382	615.28	344.77			
2	Sales deeds	17187	19119	21080	440.83	1126.27			
3	Wills	503	534	595	N. S. A.	..			
4	Money Bonds	50	590	46	24.31	0.95			
5	Other classes	18434	16829	14555	378.87	448.35			
	Total (District)	48277	48121	47658	672.67	1459.29	1926.34		

Source:—Inspector General of Registration.



XVIII. EXCISE

Tables giving particulars of Taluk-wise liquor shops, rentals obtained in auction details of tree tapped and tree tax collected and licence fee on foreign liquors.

XVIII. EXCISE

TABLE—18 I

Taluk wise Liquor Shops

Sl. No.	Name of Taluk	1965—66			1970—71		
		No. of toddy shops	No. of arrack shop	No. of foreign liquor shop (including wholesale shop)	No. of toddy shops	No. of arrack shops	No. of foreign liquor shop (including wholesale shop)
1	2	3	4	5	6	7	8
1	Meenachil	88	20	2	88	20	2
2	Kottayam	75	16	6	75	16	8
3	Changanacherry	28	7	2	28	7	2
4	Kanjirappally	16	6	3	16	6	3
5	Peermedu	3	8	7	1	12	7
6	Vaikom	52	9	1	51	9	1
7	Devicolam	..	11	3	—	12	3
8	Udumbanchola	..	6	..	4	8	1
	KTM. District	262	83	24	263	90	27
	State				2371	966	136

Source:—Board of Revenue

XVIII. EXCISE

TABLE 18.2

Rentals obtained in Auction sale of Abkari Shops

(in Rs.)

Sl. No.	Name of Taluk	1965-66			1970-71		
		Toddy shop	Arrack shop	Foreign liquor shop	Toddy shop	Arrack shop	Foreign liquor shop
1	2	3	4	5	6	7	8
1.	Meenachil	2122600	280100	6500	2347300	600100	51150
2.	Kottayam	2255900	225300	55200	2860300	721100	331650
3.	Changanacherry	893500	80500	25100	973000	190100	85150
4.	Kanjirappally	534100	225100	20000	621700	450100	73100
5.	Peermedu	80100	231000	11100	10100	740100	107950
6.	Vaikom	1072300	70200	7100	1231800	405100	15000
7.	Devicollam	..	592000	57000	..	1285100	110200
8.	Udumbanchola District	..	152000	..	61200	565000	30050
	STATE	8105400	4956700	804250
		39360317	27646124	3860900

Source: Board of Revenue

— Nil

XVIII. EXCISE
TABLE 18.3
Tree Tapped and Tree Tax Collected

Sl. No.	Name of Taluk	1965-66				1970-71			
		Coconut tree tapped (No.)	Choonda-patta tapped (No.)	Tree tax Rs.	Coconut tree tapped (No.)	Choonda-patta tapped (No.)	Tree tax Rs.		
1	2	3	4	5	6	7	8		
1.	Meenachil	2204	6421	150460	3592	8109	147580		
2.	Kottayam	13628	1516	166600	13897	1820	173340		
3.	Changanachery	4690	205	51000	5050	301	56300		
4.	Kanjirappally	2441	625	36910	276	999	42480		
5.	Peermedu	330	5	3400	60	592	600		
6.	Vaikom	8741	679	100185	9791	592	111960		
7.	Devicolan	240	33	3200		
8.	Udumpanchola	32906	11854	535460		
	District	32034	9451	508555	285119	37452	6515860		
	STATE		

Source: Board of Revenue.

— Nil.

XVIII. EXCISE

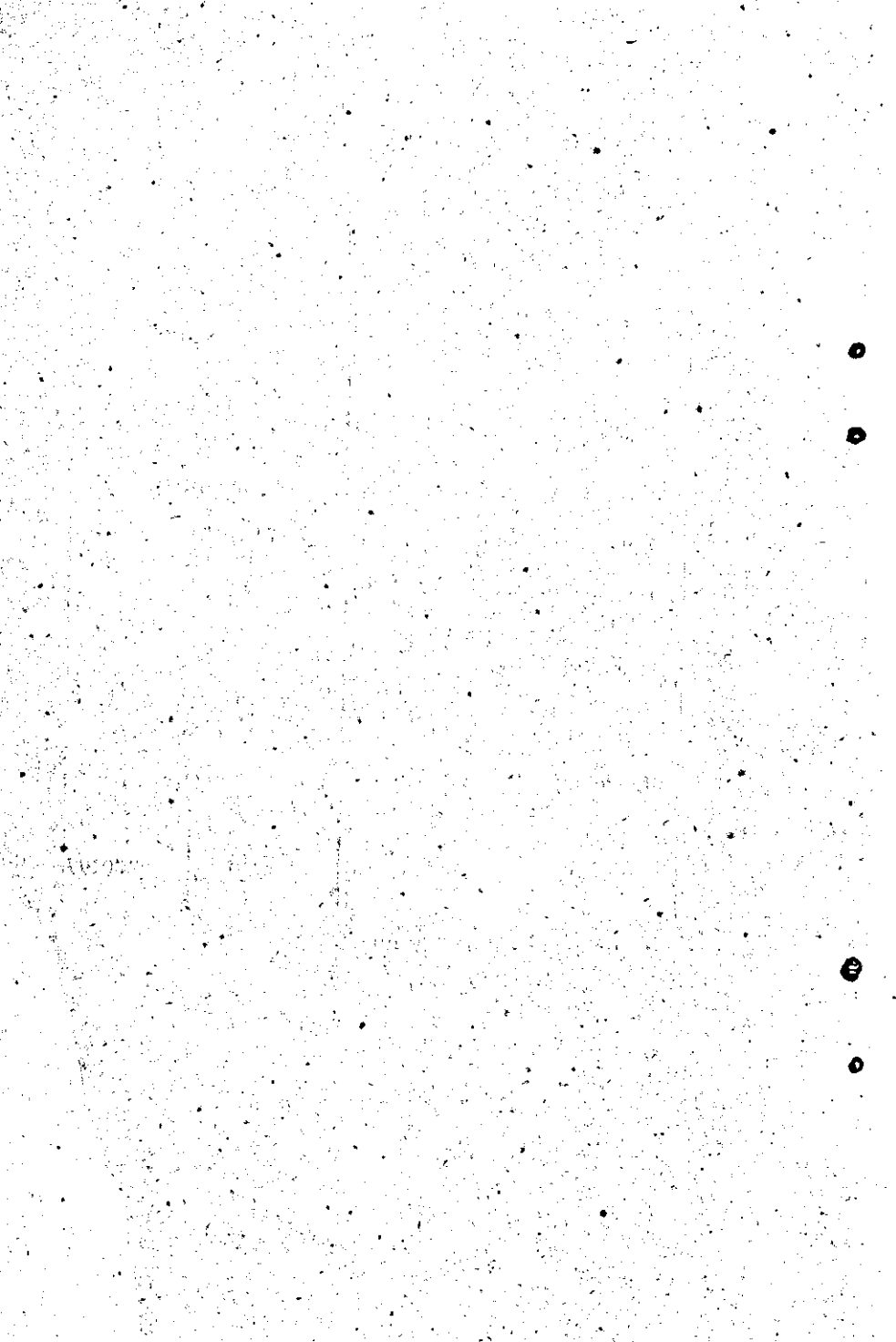
TABLE No. 18.4

Licence Fee on Foreign Liquors, Wine, etc.

(Rs.)

Sl. N.	Kind of fee	District		State
		1965-66	1970-71	1970-71
1	2	3	4	5
1.	Taveran (Retail)	182000
2.	Wholesale license fee	60000
3.	License fee for the sale of medicated wine
4.	Restaurant License fee	27000	1600	153600
5.	License fee for the sale of foreign liquor in clubs	1750	1750	7250
6.	Gallonage fee collected	480173	456297	3818005
	Others	..	530	4160
	Total	750923	460177	3983015

Source: Board of Revenue
— Nil.



XIX. SALESTAX

This section gives a comprehensive idea of the saletax collection of the district in 1969-70. Tables on Registered dealers, assesseees classified according to grade analysis of general saletax revenue, demand, collection, remission and balance under general and central saletax, arrears under sales tax and the stage of arrears are incorporated.

XIX. SALESTAX
TABLE No. 19.1
Registered Dealers in Kerala

Year	No. of assesses under rule 13, 14 & 15	No. of assesses under rule 21	Total No. of assesses	No. of non-assesses	Total No. of registered dealers	Registered dealers under central salestax
1	2	3	4	5	6	7
1965-66	3599	733	4382	2443	6825	1537
1969-70	3376	1077	4453	1735	6188	1905
State 1969-70	33463	10378	43841	14107	57948	18569

Source: Board of Revenue.

XIX. SALES TAX

TABLE 19.2

Classification of Assesseees according to Grade of
Turnover assessed to Sales-tax

Grade of turnover	No. of assessments in each Grade	
	1965-66	1969-70
1	2	3
Below Rs. 10000	1497	1131
Between Rs. 10001 & 15000	633	798
" Rs. 15001 & 20000	384	477
" Rs. 20001 & 25000	478	276
" Rs. 25001 & 30000	257	271
" Rs. 30001 & 40000	214	234
" Rs. 40001 & 50000	145	191
" Rs. 50001 & 60000	106	148
" Rs. 60001 & 70000	40	105
" Rs. 70001 & 80000	52	102
" Rs. 80001 & 90000	51	126
" Rs. 90001 & 100000	187	104
" Rs. 100001 & 200000	104	123
" Rs. 200001 & 300000	68	90
" Rs. 300001 & 400000	34	59
" Rs. 400001 & 500000	29	24
" Rs. 500001 & 600000	15	31
" Rs. 600001 & 700000	11	24
" Rs. 700001 & 800000	8	13
" Rs. 800001 & 900000	14	26
" Rs. 900001 & 1000000		10
Above 1000000	55	90
TOTAL	4382	4453

Source: Board of Revenue.

37/1315/B.

NIX. SALES TAX

TABLE 19.3

Analysis of Revenue under General Sales tax

(in '000 Rs.)

YEAR	REVENUE					
	Sales tax	Surcharge	Registration fee	Permit fee	Miscellaneous	Total
1	2	3	4	5	6	7
1965-66	12297.031	540.443	83.777	0.620	84.013	13005.884
1969-70	22787.836	1014.231	74.885	0.860	194.527	24072.339
State 1969-70	279873.460	12774.940	665.950	7.120	2407.690	29 335729.160

Source: Board of Revenue.

XIX. SALESTAX

TABLE 19.4

Demand, Collection, Remission and Balance under
General Salestax

Year	Demand	Collection	Remission	Balance
1	2	3	4	5
(Rs. in lakhs) 1965-66	159.57	124.65	5.58	29.34
(Rs. in thousands) 1969-70	28484.195	23058.107	810.839	4615.249
(Rs. in thousands) State 1969-70	352028.510	282954.310	17316.100	57758.100

Source:—Board of Revenue

XIX. SALES-TAX

TABLE 19.5

Demand, Collection, Remission and Balance under
Central Salestax

Rs.

Year	Demand	Collection	Remission	Balance
1	2	3	4	5
(Rs. in lakhs) 1965-66	21.80	17.24	1.29	3.26
(Rs. in thousands) 1969-70	2940.740	2554.031	34.490	352.219
(Rs. in thousands) State 1969-70	42247.480	28954.750	1334.260	11328.470

Source:—Board of Revenue

XIX. SALESTAX

TABLE 19-6

Arrears under Salestax Pending Collection (General Salestax,
Surcharge and Central Salestax)

Rs.

Year	Arrears during	Arrears upto
1	2	3
1965-66 (Rs. in lakhs)	12.20	33.60
1969-70 (Rs. in thousand)	2632.199	5120.558
State 1969-70 (Rs. in thousand)	24812.130	66290.940

Source:—Board of Revenue.

XIX. SALESTAX

TABLE 19.7

Stage of Arrears under Salestax (General Salestax, Surcharge and Central Salestax pending)

(Rs. in lakhs)

Sl. No.	Stages of action	Amount involved	
		1965-66	1969-70
1	2	3	4
1.	Revenue Recovery	23.41	14.79
2.	Prosecution	2.03	—
3.	Stay	27.96	6.92
4.	Notice alone issued	20.76	15.9
5.	Not ripe for collection
6.	Written off	0.26	11.22
7.	Other action	2.79	1.36
8.	Protective assesment	—	—
9.	Amount under application before the magistrates	61.66	0.93
	Total:	138.87	51.21

Source:—Board of Revenue.

XX. AGRICULTURAL INCOME-TAX

Agricultural Income-tax Statistics are furnished in this section in detail. Classification of persons assessed grade-wise number of assesses and tax demanded analysis of agricultural income tax revenue, demand, collection remission and balance under agricultural income-tax, agricultural income, tax and super tax demanded on different agricultural produce and stages of arrears under agricultural income-tax are the main tables included.

XX. AGRICULTURAL INCOME-TAX.

TABLE 20.1

Classification of Persons Assessed to
Agricultural Income-tax

Year	Individuals Companies	Registered firms	Non-Registered firms	Hindu undivided families	Tenents in common	Association of persons	Total
1	2	3	4	5	6	7	8
1965-66	3250	25	3	125	39	—	3442
1969-70	5818	26	1	153	125	2	6125

Source: Board of Revenue

—Nil.

XX. AGRICULTURAL INCOME TAX

TABLE-20.2

Number of Assessee according to Selected Grade of Income

Grade of Income	Individual		Hindu un-divided family		Tenants in common		Association of persons	
	1965-66	1969-70	1965-66	1969-70	1965-66	1969-70	1965-66	1969-70
	2	3	4	5	6	7	8	9
Up to Rs. 5,000	1648	1540	37	16	5	14	—	—
Rs. 5,001 to 10,000	1192	2908	58	81	9	43	—	1
Rs. 10,001 to 25,000	332	1071	19	42	18	48	—	1
Rs. 25,001 to 55,000	54	183	11	11	5	18	—	—
Rs. 55,001 to 1,00,000	2	43	—	1	—	—	—	—
Rs. 1,00,000 to 3,00,000	—	5	—	1	—	—	—	—
Above Rs. 3,00,000	—	—	—	1	—	—	—	—
Total	3228	5750	125	153	39	125	—	2

Source: Board of Revenue

—Nil

TABLE 20.2 (Contd.)

Grade of Income	Un-registered firms association of persons		Companies : nd other concerns assessable at company rate		Registered firms		Total	
	1965-66	1969-70	1965-66	1969-70	1965-66	1969-70		
	10	11	12	13	14	15	16	17
Upto Rs. 5000	1	—	7	1	—	—	1698	1571
Rs. 5001 to 10000	1	—	4	10	4	4	1268	3047
Rs. 10001 to 25000	1	1	6	10	7	8	383	1181
Rs. 25001 to 55000	—	—	5	15	8	8	83	235
Rs. 55001 to 100000	—	—	..	10	3	3	7	57
Rs. 100000 to 300000	—	—	..	10	2	2	2	20
Above Rs. 300000	—	—	..	12	1	1	1	14
Total	3	1	22	68	25	26	3442	6125

Source: Board of Revenue.

XX. AGRICULTURAL INCOME TAX

TABLE 20-3

Total Agricultural Income-tax demanded according to Selected Grades of Income and Classes of Assessee

(in Rs.)

Grade of Income	Individual		Hindu undivided family		Tenants in common			Registered firms		
	1965-66	1969-70	1965-66	1969-70	1965-66	1969-70	1965-66	1969-70	1965-66	1969-70
Up to Rs. 5000	188434.08	78060.05	1270.28	225.00	247.00
Rs. 5001 to 10000	490217.73	1823383.51	23332.57	18055.49	2715.77	10394.25
Rs. 10001 to 25000	772198.56	2052042.42	24075.45	53924.95	12299.96	104552.16	4172.43
Rs. 25001 to 55000	481737.33	790750.59	43751.37	39479.68	11790.42	30862.50
Rs. 55001 to 100000	162635.50	139655.73	51888.59	21284.32
Rs. 100001 to 300000	..	46750.00	..	33880.25
Above Rs. 300000	72315.59
Total	2095223.20	4930642.30	92429.67	217880.96	78941.74	167093.23	4172.43

TABLE 20.3 (Contd.)

Grade of Income	Unregistered firms association of persons		Companies and other concerns assessable at company rate		Association of persons		Total	
	1965-66	1969-70	1965-66	1969-70	1965-66	1969-70	1965-66	1969-70
	10	11	12	13	14	15	16	17
Up to Rs. 5000	78.75	..	12873.23	2854.11	202903.34	81139.16
Rs. 5001 to 10000	570.45	..	12330.05	12168.91	..	945.00	529166.57	1864947.16
Rs. 10001 to 25000	2800.61	..	42886.25	31373.35	..	12460.63	854260.83	2258525.94
Rs. 25001 to 55000	102590.11	122055.76	639869.23	983148.53
Rs. 55001 to 100000	31759.10	24092.05	246283.19	185032.10
Rs. 100001 to 300000	480363.02	560993.27
Above Rs. 300000	2221713.91	2294029.50
Total	3449.81	..	202438.74	2894621.11	..	13405.63	2472483.16	8227815.66

Source: Board of Revenue

..Nil

XX. AGRICULTURAL INCOME-TAX

TABLE 20.4

Analysis of Agricultural Income tax Revenue

(Rs. in lakhs)

Year	Agricultural Income-tax	Agricultural Supertax	Surcharge	Penalty	Total
1	2	3	4	5	6
1965-66	157.40	73.26	10.43	—	242.09
1969-70	66.81	24.88	5.20	0.18	97.07

Source: Board of Revenue.

XX. AGRICULTURAL INCOME-TAX

TABLE 20.5

**Demand, Collection, Remission and Balance under Agricultural
Income-tax (Including Surcharge)**

(Rs. in lakhs)

Year	Demand	Collection	Remission	Balance
1	2	3	4	5
1965-66	34.23	19.38	3.30	11.54
1969-70	172.19	97.07	14.68	60.44

Source: Board of Revenue.

XX. AGRICULTURAL INCOME-TAX

TABLE 20.6

**Total Agricultural Income tax and super tax demanded on
Different Agriculture Produce (in Rs.)**

Sl. No.	Classification of crops	Year	
		1965-66	1969-70
1	2	3	4
1	Tea	93,081.67	2,191,700.20
2	Rubber	745,784.63	5,425,255.80
3	Cardamom	1,122,081.28	3,364,290.09
4	Cocoanut	57,128.05	227,745.59
5	Paddy	63,445.25	287,789.02
6	Areca nut	21,632.05	78,258.13
7	Pepper	33,209.80	100,182.03
8	Coffee	21,813.49	21,319.00
9	Groundnut	—	—
10	Sugarcane	—	23,629.60
11	Chamba, Cholam	—	—
12	Tobacco	—	—
13	Pineapple	—	—
14	Lemongrass Oil	—	—
15	Ginger	23,171.96	8,368.35
16	Tapioca	11,707.19	23,133.44
17	Cashewnut	10,212.10	4,500.00
	Total	2,203,267.47	11,756,171.25

Source: Board of Revenue.

XX. AGRICULTURAL INCOME-TAX

TABLE 20.7

Stages of Arrears under Agricultural Income Tax Pending as on 31-3-1970

Sl. No.	Stages of action	Amount involved
1	2	3 Rs.
1	Amount Certified for Revenue Recovery	847,822.55
2	" under Penalties imposed	16,696.68
3	" Stayed by competent authorities	3,310,843.34
4	" Under notices issued	1,549,160.28
5	" to be written off	2,805.10
6	" under other actions	—
7	" not ripe for collection	316,772.71
	Total	6,044,100.66

Source: Board of Revenue

— Nil.

XXI. LAND REVENUE

A table showing demand, collection and balance of various land taxes is given in this section.

XXI. LAND REVENUE

TABLE 21.1

Demand, Collection and Balance of various Land Taxes (Amount in Rupees)

Sl. No.	Kind of Tax	1965-66						1970-71					
		Demand		Collection		Balance		Demand		Collection		Balance	
		3	4	5	6	7	8	9	10	11			
1	Basic Tax	2321919	2234274	87645	565518	565518	—	2471322	2471322	—	—	—	
2	Land Revenue other than basic tax	3583238	798684	2784554	183448	107667	75781	1612557	1127671	484888	484888	—	
3	Irrigation revenue	53375	33763	19612	8718	3069	5649	3246943	971784	2275159	2275159	—	
4	Capital revenue	—	—	—	—	—	—	—	—	—	—	—	
5	Kandukrishy Revenue	—	—	—	—	—	—	—	—	—	—	—	
6	Plantation additional tax	2854522	1857048	997474	1406498	1174801	231697	3598015	3121334	476681	476681	—	
	Total	8813054	4923769	3839285	2164182	1851055	313127	10928839	7692111	3236728	3236728	—	

Source: Board of Revenue

= Nil

XXII. MISCELLANEOUS

Information on loan sanctioned and amount disbursed by the K.F.C., small saving collection and the list of markets and the important commodities marketed in the district are given in this section.

XXII. MISCELLANEOUS

TABLE 22.1

**Loan Application Received, Sanctioned Amount Disbursed by
the Kerala Financial Corporation**

(Rs. in lakhs)

Year	Amount sanctioned		Amount disbursed		Balance outstan dig	
	No.	Amount	No.	Amount	No.	Amount
1	2	3	4	5	6	7
1965-66	23	11.10	19	9.04	NA	NA
1970-71	53	183.34	49	149.83	22	79.14
State 70-71	300	1013.15	258	818.75	154	600.85

Source:—K.S.F.C.

N.A.— Not available

XXII. MISCELLANEOUS

TABLE 22.2

Small Savings Collection in the District (Rs. in thousands)

Year	Postal certificate		Post Office Saving Bak		Defence deposit certificate		15 years Annuity certificate		Cumulative time deposit scheme		Post Office time deposit		Post Office Recurring deposit	
	Gross	Net	Gross	Net	Gross	Net	Gross	Net	Gross	Net	Gross	Net	Gross	Net
1	2	3	4	5	6	7	8	9	10	11	12	13	14	15
1965-66	1136	657	9295	2767	300	285	1133	928
1969-70	652	104	13057	1472	8	8	2284	544
1970-71	477	176	13654	449	..	13	2575	946	272	272	110	110
STATE 1970-71	9408	-716	127832	7472	..	-783	..	-38	16367	-5751	7355	7355	517	517

Source: Regional Director of National Savings.

.. = Nil.

XXII. MISCELLANEOUS

TABLE 22.3

List of Market and Important Commodities marketed 1970-71

Name of Taluk	Name of Important market	Daily/weekly/bi-weekly	Important Commodities marketed
1	2	3	4
I. Kottayam	1 Kottayam	Bi-weekly	Vegetables, Rice, Tapioca, Banana, Rubber, Coconut oil, Copra, Coconut, Tobacco, Fish, Eggs, etc.
2	Athirampuzha	Bi-weekly	Vegetables, Rice, Tapioca, Banana, Rubber, Coconut oil, Copra, Coconut, Tobacco, Fish, Eggs, Mutton, etc.
3	Pampady	Bi-weekly	Vegetables, Rice, Tapioca, Rubber, Banana, Plantain, etc.
4	Chingavanam	Bi-weekly	Tapioca, Banana, Vegetables, Plantain etc.
II. Changanacherry	Changanacherry	Bi-weekly	Vegetables, Rice, Tapioca, Coconut, Coconut oil and Banana, etc.
III. Vaikom	Thalayolaparambu	Bi-weekly	Rice, Vegetables, Banana, Tapioca, etc.
2	Kuruppumthara	Bi-weekly	Rice, Vegetables, Banana, Tapioca and Ginger.

1033