



GOVERNMENT OF KERALA

DES
LIBRARY

013-309

26

**FACT BOOK ON MAN POWER
KERALA**

NOVEMBER 1976

Issued by

Bureau of Economics and Statistics,
Kerala
Trivandrum

CONTENTS

Section		<i>Page</i>	<i>No.</i>
I	Population	..	1
II	Working Population	..	17
III	Sectoral Employment	..	31
IV	Unemployment and Under employment	..	55
V	Educated Man Power— General Education and Teachers Training	..	65
VI	Educated Man Power— Technical and Professional	..	87

1. Population

- 1.1 Area population and density of population by districts 1961 and 1971.
- 1.2 Distribution of population of Kerala by sex and district 1961 and 1971.
- 1.3 Density of rural and urban population by districts 1961 and 1971.
- 1.4 Population, sex ratio and percentage area of states in India 1971.
- 1.5 Population, decennial growth rate and density of population of Kerala 1901-1971.
- 1.6 Population of Kerala by sex and quinquennial age groups 1961.
- 1.7 Population of Kerala by sex and quinquennial age groups 1971.
- 1.8 Distribution of Rural and Urban population of Kerala 1901-1971.
- 1.9 Percentage of urban population by districts 1901 to 1971.
- 1.10 Distribution of population by sex and quinquennial age group—Rural 1961.
- 1.11 Do. Urban 1961.
- 1.12 Do. Rural 1971.
- 1.13 Do. Urban 1971.
- 1.14 Population in corporations and Municipalities 1901-1971.
- 1.15 Density and sex ratio in corporations and Municipalities 1961 and 1971.
- 1.16 Classification of Towns in Kerala based on population 1901-1971.
- 1.17 Projected population of Kerala 1972-1981.
- 1.18 Estimated mid-year population of India and Kerala 1961-1981.
- 1.19 Estimated population by age and sex Kerala 1976, 1979, 1981.
- 1.20 Scheduled Castes and Scheduled Tribes in Kerala by districts 1961 and 1971.
- 1.21 Land use pattern in Kerala.
- 1.22 Distribution of Land in Kerala according to use (in per cent)
- 1.23 Per capita income differences—India and Kerala.
- 1.24 Percentage distribution of Net Domestic Product—India and Kerala

2. Working Population

- 2.1 Working population of Kerala by industrial category and sex 1961 and 1971.
- 2.2 Do. Rural 1961 and 1971.
- 2.3 Do. Urban 1961 and 1971.
- 2.4 Distribution of workers in Kerala by districts 1961 and 1971 Rural and Urban.
- 2.5 Variation in working population in 1971 over 1961 in each district—Rural and Urban.
- 2.6 Work participation rates in each district 1961 and 1971.
- 2.7 Percentage distribution of workers in Kerala by industrial category and sex to total population 1901-1971.
- 2.8 Percentage distribution of workers by industrial category and by broad age-groups 1961.
- 2.9 Work participation rates in broad age groups, Rural and Urban 1961.
- 2.10 Work participation rates in different states—1961 and 1971.
- 2.11 Percentage distribution of working force by occupational division and sex—Rural and Urban 1961.
- 2.12 Percentage distribution of gainfully employed persons by occupation and sex—Rural and Urban—1958-59.

- 2.13 Percentage distribution of gainfully employed persons by occupation and sex—Rural and Urban 1960-61.
- 2.14 Percentage distribution of employed persons by occupation—1965.

3. Sectoral Employment

- 3.1 Percentage of agricultural labourers in Kerala to the total population—1901-1971.
- 3.2 Employment in working factories in Kerala in public and private sectors—1959-1974.
- 3.3 District-wise and Industry-wise distribution of registered working factories and workers in Kerala 1974.
- 3.4 Average daily employment in Plantation—Tea
- 3.5 Do. Rubber
- 3.6 Do. Coffee
- 3.7 Number of working factories and employment (State-wise) 1961 and 1971.
- 3.8 Employment in establishments (covered under E.M.I) in Kerala by industry division 1970 to 1974.
- 3.9 Do. in public sector—1970 to 1974
- 3.10 Employment in public and private sectors in Kerala 1961 to 1974.
- 3.11 Employment in public and private sectors in Kerala by Districts—1961 to 1975.
- 3.12 Employment in private sector by districts—1961 to 1975.
- 3.13 Employment in public sector (Total) by districts—1961 to 1975.
- 3.14 Employment in public sector (Central Government) by Districts—1961 to 1975.
- 3.15 Employment in public sector (State Government) by districts—1961 to 1975.
- 3.16 Employment in public sector (Local Bodies) by districts—1961 to 1975.
- 3.17 Employment in public sector (Quasi-Government) by district—1961 to 1975.
- 3.18 Employment in public sector in Kerala by different branches 1961 to 1975.
- 3.19 Employment in various organised industries in Kerala 1971.
- 3.20 Number of persons employed in organised industries in Kerala and India—1962 to 1970.

4. Unemployment and under employment

- 4.1 Number of applicants on Live Register of Employment Exchanges in Kerala 1960-1974.
- 4.2 Occupational distribution of applicants on Live Registers of Employment Exchanges in Kerala 1960-1974.
- 4.3 Number of work seekers in each district of Kerala 1961 to 1974.
- 4.4 Number of educated work seekers in Kerala 1966-1975.
- 4.5 Unemployed persons in Kerala as percentage of labour force by districts—1965.
- 4.6 Percentage distribution of unemployed persons in Kerala by sex and age group—1965
- 4.7 Distribution of unemployed persons in Kerala by general education and sex—1965.
- 4.8 Distribution of unemployed persons by general education and duration of unemployment—1965.
- 4.9 Percentage distribution of unemployed persons according to duration of unemployment (urban) July 1960—June 1961.

- 4.10 Percentage distribution of employed persons by hours at work during the reference week—1965.
- 4.11 Percentage distribution of employed persons reporting available for additional work in each weekly hours at work—1965.
- 4.12 Percentage distribution of gainfully employed persons during the week of hours at work and availability for additional work (urban) July 1958—June 1959.
- 4.13 Percentage distribution of working persons by weekly hours at work and availability for additional work (rural) July 1960—June 1961.

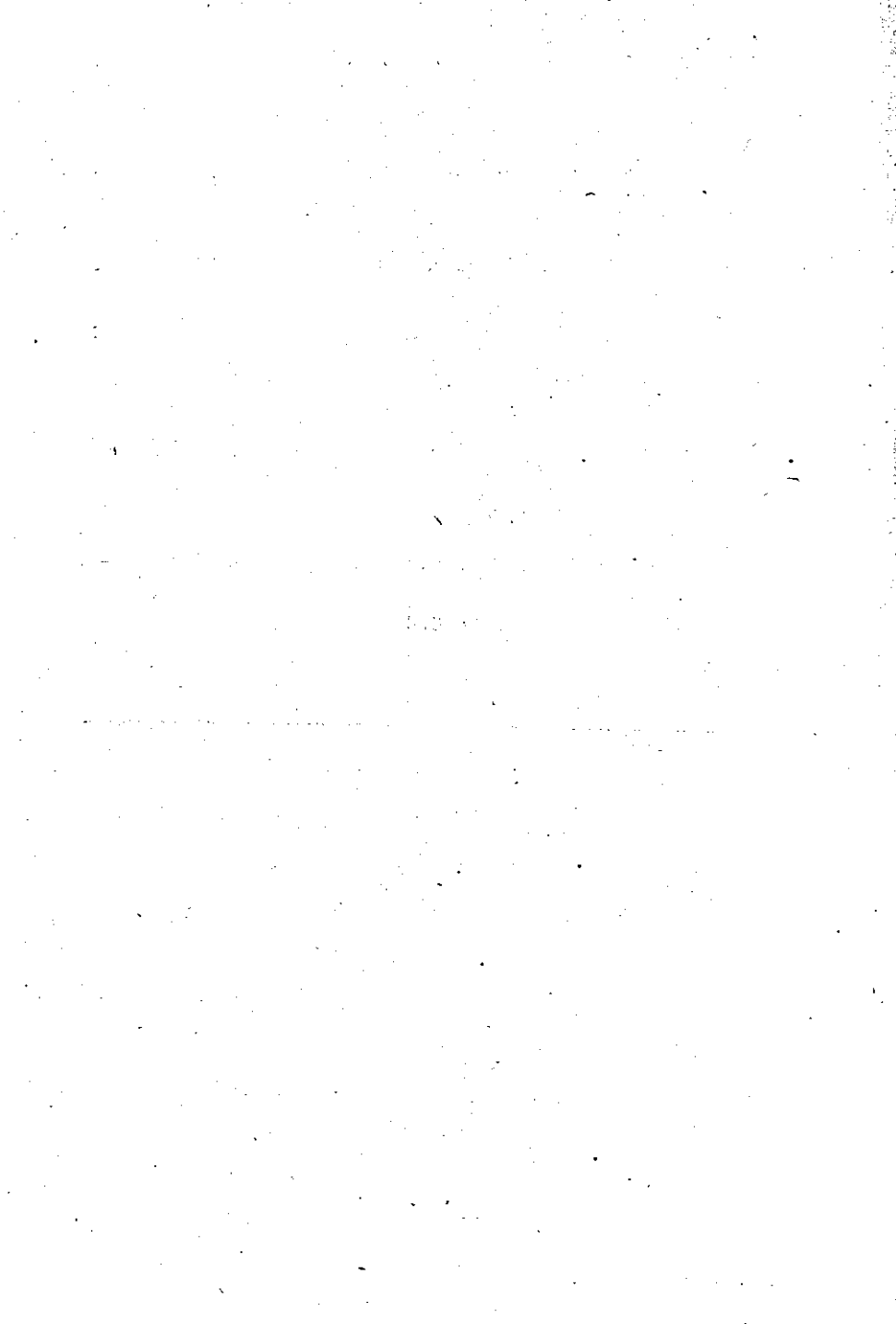
5. Educated manpower—General Education and Teachers' Training

- 5.1 Percentage of literates in Kerala and districts 1901—1971.
- 5.2 Percentage of literates in Kerala and in other states 1961—1971.
- 5.3 Distribution of schools in Kerala by types and districts 1974—75.
- 5.4 Progress of Primary and Secondary Educational Institutions in Kerala 1956—57 to 1974—75.
- 5.5 Progress of enrolment in the different stages of school education 1956—57 to 1975—76.
- 5.6 Standard-wise strength of students 1975—76.
- 5.7 Distribution of students according to school management 1966—67 to 1974—75.
- 5.8 Percentage distribution of students according to school management 1966—67 to 1974—75.
- 5.9 Enrolment of students as percentage to total population 1960—61 to 1974—75.
- 5.10 Number of students that passed S.S.L.C. Examination in Kerala 1961—62 to 1974—75.
- 5.11 Wastage in school education 1963—64 to 1972—73.
- 5.12 Wastage in school education—Boys.
- 5.13 Wastage in school education—Girls.
- 5.14 Number of students in Basic training schools 1961—62 to 1974—75.
- 5.15 Out-turn of T.T.C. holders 1961—62 to 1973—74.
- 5.16 Stock of teachers—Section-wise 1961—62 to 1974—75.
- 5.17 Stock of trained and untrained teachers—Section-wise 1974—75.
- 5.18 List of Training colleges in Kerala with sanctioned intake capacity 1974—75.
- 5.19 Distribution of training colleges by district and sanctioned intake 1974—75.
- 5.20 Sanctioned intake actual intake and out-turn of B.Ed. degree holders 1966—67 to 1974—75.
- 5.21 Number of Arts and Science colleges and enrolment by district 1973—74.
- 5.22 Progress in the number of Arts and Science colleges and enrolment 1956—57 to 1973—74.
- 5.23 Number of students in Arts and Science colleges by course of study 1973—74.
- 5.24 Number of teachers in Arts and Science colleges 1956—57 to 1973—74.
- 5.25 Out-turn of B.A., B.Sc. and B.Com. degree holders.
- 5.26 Out-turn of M.A., M.Sc. and M.Com. degree holders 1957, 61, 66 and 73.
- 5.27 Out-turn of Post Graduates in General education by subject and by class from Kerala University 1973—74.
- 5.28 Post Graduate courses and number of students in different Universities in Kerala 1974—75.
- 5.29 Number of students (sex-wise) appeared and passed in different courses of studies under Kerala University 1971—72 and 1972—73.

6. Educated manpower—Technical and Professional

- 6.1 Progress of Technical Educational Institutions in Kerala—Engineering Colleges
- 6.2 Do Polytechnics.
- 6.3 Do. Junior Technical Schools.
- 6.4 Intake capacity in Graduate courses in Engineering College-wise—1975.
- 6.5 Intake capacity in Diploma Courses in Engineering Institution-wise—1975.
- 6.6 Do. In Women's Polytechnics—1975.
- 6.7 Enrolment and staff in Polytechnics in each district—1974-75.
- 6.8 Enrolment and staff in Junior Technical Schools in each district—1974-75.
- 6.9 Number of Industrial Training Institutes and intake of trainees—District-wise 1974-75.
- 6.10 Distribution of Trainees according to intake in each trade in the I.T.I.—1974-75.
- 6.11 District-wise number of Private Commercial Institution and Private Industrial Schools recognised by the State Government—1974-75.
- 6.12 Intake of Engineering Graduates—Branch-wise,—1966-67 to 1974-75.
- 6.13 Out turn of Engineering Graduates—Branch-wise 1966-67 to 1974-75.
- 6.14 Intake of Engineering Diploma Holders Branch-wise—1966-67 to 1974-75.
- 6.15 Out-turn of Engineering Diploma Holders Branch-wise 1966-67 to 1974-75.
- 6.16 Sanctioned and actual intake of students in post-graduate courses in Engineering 1966-67 to 1974-75.
- 6.17 Intake and out-turn of Medical Graduates from Medical Colleges in Kerala 1966-1975.
- 6.18 Post-graduate Courses in Medical Colleges and sanctioned intake capacity 1974-75.
- 6.19 Post-graduate Diploma Courses in the Medical Colleges and sanctioned intake 1974-75.
- 6.20 Paramedical Graduate courses 1974-75.
- 6.21 School of Nursing and sanctioned intake 1974-75.
- 6.22 Other Paramedical Certificate courses in different centres 1974-75.
- 6.23 Intake and out turn of degree and diploma holders in Ayurveda 1966 to 1975.
- 6.24 Ayurveda Colleges and Research Centres and sanctioned intake in different courses of studies—1974-75.
- 6.25 Homoeopathic Colleges in the state and sanctioned intake 1974-75.
- 6.26 Intake and out-turn of Agricultural Graduates and Post-graduates 1961-62 to 1974-75.
- 6.27 Intake and out-turn of Veterinary Graduates and Post-graduates 1961-62 to 1975-76.
- 6.28 Institutions for studies in Agricultural and Veterinary subjects and intake Capacity 1974-75.
- 6.29 Enrolment of students and number of teachers in Law Colleges 1956-57 to 1973-74.
- 6.30 Law Colleges in the state and intake capacity 1974-75.
- 6.31 Institution for co-operative training and intake capacity 1974-75.
- 6.32 Progress in the number of Institutions, enrolment of students and teachers for oriental studies 1956-57 to 1973-74.
- 6.33 Institutions for Aesthetic Education in Kerala 1971-75
- 6.34 List of schools for the Handicapped 1974-75.

SECTION 1
POPULATION



1. POPULATION

TABLE 1.1

Area, Population and Density of Population by Districts 1961 and 1971

District	1961			1971	
	Area sq.km.	Population (No.)	Density (per sq. km.)	Population (No.)	Density (per sq. km.)
(1)	(2)	(3)	(4)	(5)	(6)
Trivandrum	2192	1744531	798	2198606	1003
Quilon	4623	1946963	410	2412821	522
Alleppey	1884	1805517	988	2125722	1128
Kottayam	2196	1320506	584	1539030	701
Idikki	5087	590328	114	765608	151
Ernakulam	2377	1681959	746	2163674	910
Trichur	3032	1588271	544	2128797	702
Palghat	4400	1369500	327	1685342	383
Malappuram	3638	1387378	360	1856362	510
Kozhikode	3729	1588468	430	2106249	565
Cannanore	5706	1780294	314	2365164	415
Total Kerala	38864	16903715	435	21347375	549

Source: Census of India 1961 and 1971.

TABLE 1.2

Distribution of Population of Kerala by Sex and Districts 1961 and 1971

District	1961			1971		
	Persons	Males	Females	Persons	Males	Females
(1)	(2)	(3)	(4)	(5)	(6)	(7)
Trivandrum	1744531	869884	874647	2198606	1095176	1103420
Quilon	1946963	975573	971390	2412821	1205720	1207101
Alleppey	1805517	890519	914998	2125722	1048082	4077640
Kottayam	1320506	664294	656212	1539030	773182	765848
Idikki	590328	308141	282187	765608	395297	370311
Ernakulam	1681959	841393	840566	2163674	1088432	1075242
Trichur	1688271	806608	881663	2128797	1022774	1106023
Palghat	1369500	659209	710291	1685342	819571	865771
Malappuram	1387378	674345	713033	1856362	903515	916847
Kozhikode	1538468	797234	791174	2106249	1057764	1048485
Cannanore	1780294	874667	905627	2365164	1172333	1192826
Total Kerala	16903715	8361927	8541788	21347375	10587851	10759524

TABLE 1.3
Density of Rural and Urban Population of Kerala by Districts
1961 and 1971 (per sq. km.)

District	1961			1971			Variation in 71 over 61		
	Total	Rural	Urban	Total	Rural	Urban	Total	Rural	Urban
(1)	(2)	(3)	(4)	(5)	(6)	(7)	(8)	(9)	[(10)
Trivandrum	798	638	2885	1003	799	3676	205	161	791
Quilon	410	383	3661	522	485	4820	112	102	1159
Alleppey	988	886	2211	1128	1013	2562	140	227	351
Kottayam	584	560	844	701	665	1065	117	105	221
Idikki	114	114	..	151	146	902	37	32	..
Ernakulam	746	599	3708	910	673	5944	164	74	2236
Trichur	564	516	2210	702	641	2464	138	125	254
Palghat	327	298	1667	383	343	1841	56	45	174
Malappuram	360	344	1899	510	486	1603	150	142	296
Kozhikode	430	846	1905	565	438	2819	135	92	914
Cannanore	314	269	1657	415	369	1794	101	100	137
Kerala	435	381	2074	549	477	2584	114	96	910

Source : Census of India 1961 and 1971

TABLE 1.4
Population Sex ratio and percentage Area of States in India 1971

Sl. No.	State	Population 1971 census (in lakhs)	Percentage of Area	Percentage of Population	Sex ratio (females per 1000 males)
(1)	(2)	(3)	(4)	(5)	(6)
	India	5479.50	100.00	100.00	930
1.	Andhra Pradesh	435.03	8.44	7.94	977
2.	Assam	149.56	3.04	2.23	897
3.	Bihar	563.53	5.30	10.28	954
4.	Gujarat	266.97	5.97	4.87	934
5.	Haryana	100.37	1.35	1.83	867
6.	Himachal Pradesh	34.60	1.70	0.63	958
7.	Jammu and Kashmir	46.17	6.77	0.84	878
8.	Kerala	213.47	1.18	3.90	1016
9.	Karnataka	292.99	5.85	5.35	957
10.	Madhy Pradesh	416.54	13.50	7.60	941
11.	Maharashtra	504.12	9.38	9.20	930
12.	Manipur	10.73	0.68	0.20	980
13.	Meghalaya	10.12	0.69	0.18	942
14.	Nagaland	5.16	0.50	0.09	871
15.	Orissa	219.45	4.75	4.00	988
16.	Punjab	135.51	1.54	2.47	865
17.	Rajasthan	257.66	10.43	4.70	911
18.	Tamilnadu	411.99	3.96	7.52	979
19.	Tripura	15.56	0.32	0.28	943
20.	Uttar Pradesh	893.41	8.97	16.12	879
21.	West Bengal	443.12	2.68	8.09	891
	Union Territories	63.42	3.00	1.18	..

TABLE 1.5

Population, decennial growth-rate and density of population of Kerala 1901-1971

<i>Year</i>	<i>Population (in lakhs)</i>	<i>Decennial growth-rate percentage</i>	<i>Density of population (per sq. km.)</i>
(1)	(2)	(3)	(4)
1901	63.96	9.84	165
1911	71.48	11.75	184
1921	78.02	9.16	201
1931	95.07	21.85	245
1941	110.31	16.04	284
1951	135.49	22.82	349
1961	169.04	24.76	435
1971	213.47	26.29	549

Source: Census of India 1971.

TABLE 1 6

Population of Kerala by Sex and quinquennial Age groups (smoothed) 1961 ('00)

<i>Age group</i>	<i>Persons</i>	<i>%</i>	<i>Male</i>	<i>%</i>	<i>Female</i>	<i>%</i>
(1)	(2)	(3)	(4)	(5)	(6)	(7)
0-14	69278	40.98	34805	41.62	37473	40.37
15-19	17373	10.28	8422	10.07	8951	10.48
20-24	15105	8.94	7283	8.71	7872	9.16
25-29	13002	7.69	6268	7.50	6734	7.88
30-34	11194	6.62	5437	6.50	5757	6.74
35-39	9567	5.66	4756	5.69	4811	5.63
40-44	7972	4.72	4022	4.81	3950	4.62
45-49	6642	3.94	3352	4.01	3290	3.85
50-54	5517	3.26	2754	3.29	2763	3.23
55-59	4452	2.63	2198	2.63	2254	2.64
60 and above	8935	5.28	4322	5.17	4613	5.40
Total	169037	100.00	83619	100.00	85418	100.00

Source: Census of India 1961.

TABLE 1.7

Population of Kerala by Sex and quinquennial Age groups—1971

<i>Age group</i>	<i>Persons</i>	<i>%</i>	<i>Male</i>	<i>%</i>	<i>Female</i>	<i>%</i>
(1)	(2)	(3)	(4)	(5)	(6)	(7)
0-14	8595262	40.27	4345415	41.04	4249847	39.50
15-19	2337305	10.95	1127098	10.65	1210207	11.25
20-24	1989901	9.32	977869	9.24	1012032	9.41
25-29	1387506	6.50	664368	6.28	723141	6.72
30-39	2487858	11.65	1205088	11.38	1282770	11.92
40-49	1956373	9.16	995745	9.40	960628	8.93
50-59	1264572	5.92	639945	6.04	624627	5.80
60+	1326695	6.22	631802	5.97	695893	6.47
Age not stated	903	..	524	..	379	..
Total	21347375	100.00	10587851	100.00	10759524	100.00

Source: Census of India 1971.

TABLE 1.8

Distribution of Rural and Urban population of Kerala 1901-1971

<i>Year</i>	<i>Rural population (in lakhs)</i>	<i>Urban population (in lakhs)</i>	<i>Percentage of urban population to total population</i>
(1)	(2)	(3)	(4)
1901	59.42	4.54	7.1
1911	66.23	5.25	7.3
1921	71.56	6.46	8.3
1931	86.40	8.67	9.1
1941	99.03	11.28	10.2
1951	119.58	15.91	11.7
1961	143.50	25.54	15.1
1971	178.81	34.66	16.2

Source: Census of India 1971.

TABLE 1.9

Percentage of Urban population by Districts 1901 to 1971

District	1901	1911	1921	1931	1941	1951	1961	1971
(1)	(2)	(3)	(4)	(5)	(6)	(7)	(8)	(9)
Trivandrum	11.9	11.2	14.8	15.1	17.0	19.5	25.7	26.0
Quilon	3.0	3.1	3.6	3.8	4.3	4.6	7.4	7.8
Alleppey	4.7	5.1	8.8	9.9	10.3	13.8	17.2	16.9
Kottayam	6.7	5.8	8.8	8.8	8.7	11.9	9.6	10.2
Ernakulam	11.1	11.4	11.6	14.6	15.2	17.5	21.3	27.6
Trichur	4.8	5.6	5.9	8.6	9.3	10.3	11.0	11.7
Palghat	7.1	7.4	7.5	7.4	8.8	10.9	10.9	12.7
Malappuram	5.5	6.7
Kozhikode	7.8	7.9	7.9	8.0	11.2	13.0	23.9	26.7
Cannanore	7.1	7.9	7.2	7.4	7.3	9.1	16.9	13.7
State	7.1	7.3	8.3	9.1	10.2	11.7	15.1	16.2

Note: Consequent on the formation of Idikki District in 1973, the percentage of urban population in Kottayam, Idikki and Ernakulam Districts in 1971 is re-worked as 13.4, 3.3 and 21.4 respectively.

TABLE 1.10

Distribution of population by sex and quinquennial Age group—Rural 1961

Age group	Persons	%	Male	%	Female	%
(1)	(2)	(3)	(4)	(5)	(6)	(7)
0—14	6171863	43.03	3121645	44.10	3050218	41.96
15—19	1202429	8.38	575933	8.14	626496	8.62
20—24	202709	8.38	563351	7.96	639358	8.80
25—29	1086681	7.57	504001	7.12	582680	8.02
30—39	1754763	12.23	861786	12.17	892977	12.29
40—49	1234180	8.60	621332	8.78	612848	8.43
50—59	848527	5.91	422140	5.97	426387	5.87
60 and above	844489	5.89	406851	5.75	437538	6.01
Age not stated	3933	0.01	2029	0.01	1904	..
Total	14349574	100.00	7079168	100.00	7270406	100.00

Source: Census of India 1961.

TABLE 1.11
Distribution of population by Sex and quinquennial Age group—Urban 1961

Age group	Persons	%	Male	%	Female	%
(1)	(2)	(3)	(4)	(5)	(6)	(7)
0—14	1033506	40.46	525410	40.96	508096	39.96
15—19	230418	9.02	114055	8.89	116363	9.15
20—24	230870	9.04	115001	8.97	115868	8.11
25—29	204642	8.01	100243	7.82	104399	8.20
30—39	3,96,555	12.91	168119	13.10	161536	12.71
40—49	229787	9.00	118512	9.24	111275	8.76
50—59	153250	6.00	76157	5.94	77093	6.07
60 and above	141894	5.56	65189	5.68	76705	6.04
Age not stated	119	..	73	..	46	..
Total	2554141	100.00	1282759	100.00	1271382	100.00

TABLE 1.12
Distribution of population by Sex and quinquennial Age group—Rural 1971

Age group	Persons	%	Male	%	Female	%
(1)	(2)	(3)	(4)	(5)	(6)	(7)
0—14	7272249	40.67	3674531	41.51	3597718	39.85
15—19	1946342	10.89	936740	10.58	1009602	11.18
20—24	1642337	9.18	802862	9.07	839475	9.30
25—29	1145198	6.40	544489	6.15	600709	6.65
30—39	2066647	11.56	993573	11.23	1073074	11.89
40—49	1630262	9.12	826322	9.34	803940	8.90
50—59	1057056	5.91	535280	6.05	521776	5.78
60+	1120107	6.27	538121	6.07	581986	6.45
Age not stated	728	..	432	..	296	..
Total	17880926	100.00	8852350	100.00	9028576	100.00

Source: Census of India 1971.

TABLE 1.13
Distribution of population by Sex and quinquennial Age group—Urban 1971

Age group	Persons	%	Male	%	Female	%
(1)	(2)	(3)	(4)	(5)	(6)	(7)
0—14	1323013	38.65	670884	38.66	652129	37.68
15—19	390963	11.28	190358	10.97	200605	11.59
20—24	347514	10.03	175007	10.08	172557	9.97
25—29	242308	6.99	119876	6.91	122432	7.07
30—39	421211	12.15	211515	12.19	209696	12.11
40—49	326111	9.40	169423	9.76	156688	9.05
50—59	207576	5.51	104665	6.03	102851	5.94
60+	207886	5.99	93681	5.40	113907	6.59
Age not stated	175	..	92	..	83	..
Total	3466449	100.00	1735501	100.00	1730948	100.00

Source: Census of India 1971.

TABLE 1.14

Population in Corporations and Municipalities 1931-1971 (Population in '000)

Corporations/ Municipalities	Population in							
	1901	1911	1921	1931	1941	1951	1961	1971
1. Cochin (C)	61.24	64.73	68.49	99.10	126.46	166.07	277.72	439.07
2. Trivandrum (C)	57.88	63.56	72.78	96.02	128.37	186.93	239.82	409.63
3. Calicut (C)	76.98	78.42	82.33	99.27	126.35	158.72	220.94	333.98
4. Alleppey	24.92	25.67	32.07	43.84	56.33	116.28	138.83	160.17
5. Quilon	15.69	18.84	25.14	33.74	49.50	66.13	91.02	124.21
6. Palghat	44.18	44.32	45.49	49.06	55.16	69.50	77.62	95.79
7. Trichur	15.59	23.57	27.00	45.66	57.52	69.52	73.04	76.24
8. Tellicherry	27.88	29.26	27.58	30.35	36.32	40.04	44.76	68.76
9. Kottayam	17.55	15.14	18.83	25.24	33.36	44.20	52.69	59.71
10. Cannanore	27.81	28.96	27.71	34.24	35.85	42.43	46.10	55.16
11. Kayamkulam	5.75	5.83	9.17	10.84	10.92	13.18	44.57	54.10
12. Badagara	11.32	11.15	9.80	11.26	17.92	20.96	43.91	53.94
13. Changanacherry	14.26	17.24	18.96	24.20	28.38	36.29	42.38	48.55
14. Chalakudy	5.89	7.43	10.85	16.86	37.56
15. Shertalai	4.78	5.94	6.77	7.12	31.16	36.75
16. Kasargod	..	8.30	7.31	9.17	11.57	22.71	27.64	34.98
17. Malappuram	32.00
18. Chittur Thatha- mangalam	14.32	14.71	18.15	18.92	21.11	23.75	26.46	28.51
19. Attingal	11.05	10.61	16.24	18.67	22.05	27.05
20. Thiruvalla	..	7.97	12.01	14.49	18.00	20.71	24.24	26.68
21. Navelikkara	12.21	14.19	16.02	17.27	18.97	25.65
22. Irinjalakuda	8.42	8.70	9.46	11.05	17.33	19.80	22.34	25.41
23. Parur	12.96	13.78	11.95	15.18	16.18	18.24	20.85	24.39
24. Alwaye	..	3.87	6.77	7.62	9.74	16.35	20.86	24.07
25. Neyattinkara	8.03	9.26	13.83	16.38	20.27	23.98
26. Muvattupuzha	4.52	5.63	9.08	10.16	22.90	22.14
27. Perumbavoor	5.86	7.76	8.02	16.15	20.89
28. Palai	2.20	2.63	3.04	13.42	15.46	20.27
29. Vaikom	11.26	13.81	15.25	15.65	17.42	20.01
30. Kunnankulam	7.19	8.34	8.52	13.82	12.21	15.36	16.27	18.37
31. Guruvayoor Township	15.86
32. Punalur	38.18
33. Tirur	32.27

Note: The names of Corporations and Municipalities are arranged according to the magnitude of populations as per 1971 Census (except the last two which are new Municipalities).

(C) Corporations. The population of Cochin and Calicut Corporations for earlier decades have been built up by adding the population of the towns which have been entirely merged into it.

Source: Census of India—1971 General Population Table Part II A
Table A IV pages 86-94.

TABLE 1.15

**Density and sex ratio in Corporations and Municipalities in the State
1961 and 1971**

Corporations/ Municipalities	Density per Sq km.		Sex ratio (No. of females per 1000 males)	
	1961	1971	1961	1971
1. Cochin	4260	4628	930	951
2. Trivandrum*	5387	5467	961	988
3. Calicut*	5021	40.0	972	988
4. Alleppey	2968	3425	984	994
5. Quilon*	5570	6721	945	986
6. Palghat	2918	3601	1000	1005
7. Trichur	5765	6027	1012	1042
8. Tellicherry*	5739	4479	1044	1038
9. Kottayam	3390	3840	962	986
10. Cannanore*	4257	5001	988	977
11. Kaya mkulam	2046	2483	1014	1027
12. Badagara	2058	2528	998	1005
13. Changanacherry	3196	3596	981	1006
14. Chalakudy*	1893	1489	977	1006
15. Shertalai	1924	2270	1025	1023
16. Kasargod	1657	2097	1026	988
17. Malap uram	..	952	..	1014
18. Chittur-Thatha- mangalam	1799	1938	1061	1033
19. Attingal	1556	1908	1020	1038
20. Thiruvalla	1674	1844	1063	1067
21. Mavelikkara*	2036	2028	1071	1065
22. Irinjalakuda**	1846	2260	1078	1063
23. Parur**	2419	2701	1057	1040
24. Alwaye	2910	3352	875	931
25. Neyyattinkara	2027	2472	983	1005
26. Moovattupuzha*	1159	1680	935	943
27. Perumbavoor**	1404	1537	933	942
28. Palai**	1062	1273	947	970
29. Vaikom	1995	2293	1006	1031
30. Guruvayoor Township	..	2444	..	1129
31. Kunnamkulam	2334	2639	1150	1130
32. Punalur	..	1104	..	N.A.
33. Tirur	..	1944	..	N.A.

Source: Worked out from Table A-IV Census of India—1971. General Population Tables Part II-A pages 86-94.

Note: *Changes in area due to changes in jurisdiction between 1961 and 1971.

**Changes in area due to revised computation.

TABLE 1.16

Classification of Towns in Kerala based on population 1901-1971

Size town	1901	1911	1921	1931	1941	1951	1961	1971
(1)	(2)	(3)	(4)	(5)	(6)	(7)	(8)	(9)
1 lakh and above	2	3	4	5
50000-99999	2	2	2	2	4	5	5	7
20000-49999	6	8	9	11	7	12	31	40
10000-19999	9	7	9	15	20	29	32	29
5000-9999	3	6	14	17	20	27	16	5
Less than 5000	..	2	10	8	9	18	1	2
Total	20	25	44	53	62	94	89	88

Source: Director of census operation, Kerala.

TABLE 1.17

Projected population of Kerala 1972-1981 ('000)

Year	Persons	Male	Female	Growth rate
(1)	(2)	(3)	(4)	(5)
1972	21736	10780	10956	2.34
1973	22235	11402	11193	2.30
1974	22739	113.6	11433	2.27
1975	23245	11572	11673	2.23
1976	23737	11830	11907	2.12
1977	24166	12057	12109	1.81
1978	24584	12279	12305	1.73
1979	24990	12494	12466	1.65
1980	25384	12703	12681	1.58
1981	25767	12906	12861	1.51

Source: Population projections for India and State—Revised after 1971 census—Registrar General of India.

TABLE 1.18
Estimated mid-year population of India and Kerala 1961-1981
 (In millions)

Year	India	Kerala
1961	442.37	17.05
1962	452.21	17.48
1963	462.03	17.88
1964	472.13	18.29
1965	482.53	18.72
1966	493.21	19.15
1967	504.16	19.59
1968	515.41	20.04
1969	526.99	20.51
1970	538.88	20.99
1971	550.82	21.47
1972	562.47	21.97
1973	574.22	22.47
1974	586.06	22.98
1975	597.87	23.48
1976	609.27	23.98
1977	621.09	24.38
1978	630.71	24.80
1979	641.12	25.20
1980	651.32	25.59
1981	661.38	25.98

Source: Registrar General of India.

TABLE 1.19
Estimated population by age and sex—Kerala 1976, 1979 and 1981 ('000)

Age group	1976			1979			1981		
	Male	Female	Total	Male	Female	Total	Male	Female	Total
(1)	(2)	(3)	(4)	(5)	(6)	(7)	(8)	(9)	(10)
0-4	1739	1658	3397	1639	1562	3201	1577	1503	3080
5-9	1630	1549	3179	1668	1578	3246	1691	1596	3287
10-14	1446	1390	2836	1540	1467	3007	1599	1515	3114
15-19	1219	1199	2418	1342	1298	2640	1418	1359	2777
20-24	1052	1055	2107	1138	1125	2263	1191	1168	2359
25-29	895	939	1834	976	992	1968	1026	1025	2051
30-34	764	827	1591	831	879	1710	873	912	1785
35-39	657	715	1372	711	769	1480	744	802	1546
40-44	560	606	1166	607	658	1265	637	691	1328
45-49	177	508	985	515	554	1069	539	582	1121
50-54	404	415	819	434	457	891	453	483	936
55-59	324	329	653	356	366	722	376	389	765
60-64	250	258	508	276	285	561	292	301	593
65-69	183	196	379	203	214	417	215	225	440
70 and above	230	263	493	258	292	550	275	310	585
Total	11830	11907	23737	12494	12496	24 90	12906	12861	25767

Source: Population projections for India and State revised after 1971 census—Registrar General of India.

TABLE 1.20

Scheduled Caste and Scheduled Tribe in Kerala by districts 1961 and 1971

District	1961				1971				Variation in 1971 over 1961				
	(1)	(2)	(3)	(4)	(5)	(6)	(7)	(8)	(9)	(10)	(11)	(12)	(13)
	Scheduled Caste to total population	% of S.C. Scheduled Tribe to total population	% of S.T. Scheduled Tribe to total population	Scheduled Caste to total population	% of S.T. Scheduled Caste to total population	% of S.C. Scheduled Caste to total population	Scheduled Tribe to total population	% of S.C. Scheduled Tribe to total population	% of S.C. Scheduled Tribe to total population	Scheduled Caste to total population	% of S.C. Scheduled Caste to total population	Scheduled Tribe to total population	% of S.T. Scheduled Tribe to total population
Trivandrum	161982	9.29	9784	0.56	219741	9.72	11059	0.50	51759	11.40	1275	0.28	
Quilon	227263	11.67	3799	0.19	280632	11.63	3737	0.15	53367	11.32	-62	-0.01	
Alleppey	166521	9.22	584	0.03	200770	9.44	435	0.02	34249	10.89	-143	-0.05	
Kottayam	73195	5.54	10769	0.82	94528	6.14	11059	0.72	21333	9.76	290	0.13	
Idikki	91843	15.56	19886	3.37	97819	12.78	23181	3.03	5976	2.73	3295	1.88	
Ernakulam	143463	8.53	766	0.05	182775	8.45	580	0.03	39312	3.16	-186	-0.01	
Trichur	174893	10.36	6271	0.37	216237	10.16	9383	0.44	41344	9.39	3112	0.71	
Palghat	176199	12.87	19423	1.42	210765	12.51	25594	1.52	34566	10.94	6171	1.95	
Malappuram	111409	8.03	6716	0.48	140826	7.59	8382	0.48	29417	6.27	2166	0.46	
Kozhikode	64527	4.06	63859	4.02	76338	3.62	84932	4.03	11811	2.28	21123	4.08	
Cannanore	43520	2.44	70505	3.58	57737	2.44	90464	3.82	14217	2.43	19559	3.31	
Kerala	1434817	8.49	212762	1.26	1772168	8.30	269356	1.26	337351	7.59	56594	1.26	

Source: 1961 and 1971 census figures.

TABLE 1.21
Land use pattern in Kerala (Area in '000 hectares)

Sl. No.	Mode of utilisation	1956-57	1961-62	1966-67	1971-72	1972-73	1973-74
(1)	(2)	(3)	(4)	(5)	(6)	(7)	(8)
1.	Area according to Census Department	NA.	NA.	NA.	3886.40	3886.40	3886.40
2.	Geographical area according to State Survey Department	3885.67	3885.67	3885.67	3885.67	3885.67	3885.67
3.	Area according to village papers	3809	3858	3858	3858	3858	3858
4.	Forests	1018	1056	1055	1055	1054	1053
5.	Land put to non-agricultural uses	203	209	235	276	276	286
6.	Barren & uncultivable land	201	146	101	69	69	65
7.	Permanent pastures and grazing land	49	45	28	28	28	28
8.	Land under miscellaneous tree crops	206	202	182	121	115	100
9.	Cultivable waste	177	141	106	78	74	74
10.	Fallow other than current fallow	84	61	34	21	20	22
11.	Current fallows	63	66	26	23	26	20
12.	Net area sown	1808	1932	2091	2187	2197	2202
13.	Total cropped area	2178	2341	2622	2958	2896	2999
14.	Area sown more than once	370	409	531	771	789	797

TABLE 1.22
Distribution of land according to use (in per cent)

Classification	1956-57	1961-62	1966-67	1971-72	1972-73	1973-74
(1)	(2)	(3)	(4)	(5)	(6)	(7)
Total area according to village papers	100.00	100.00	100.00	100.00	100.00	100.00
Forests	26.73	27.37	27.36	27.36	27.36	27.29
Land put to non-agricultural uses	5.35	5.43	6.09	7.10	7.10	7.41
Barren and uncultivable land	5.28	3.79	2.62	1.85	1.75	1.68
Permanent pastures and grazing land	1.28	1.15	0.72	0.72	0.72	0.73
Land under miscellaneous tree crops	5.40	5.24	4.72	3.19	2.98	2.59
Cultivable waste	4.65	3.65	2.75	2.01	1.91	1.92
Current fallow	1.64	1.58	0.88	0.60	0.66	0.57
Other fallows	2.20	1.72	0.67	0.55	0.54	0.73
Net area sown	47.47	50.07	54.19	56.62	56.98	57.08
Total cropped area	57.19	60.68	67.96	76.50	77.40	77.73
Area sown more than once	9.72	10.61	13.76	19.90	20.40	20.66

TABLE 1-23

Per-capital income differences—India and Kerala

(Rs.)

Year	At current prices			1960-61 prices		
	India	Kerala	Income differences	India	Kerala	Income differences
(1)	(2)	(3)	(4)	(5)	(6)	(7)
1960-61	306	259	47	306	259	47
1965-66	425	380	45	311	261	50
1668-69	357	496	61	332	286	46
1969-70	604	542	62	343	291	52
1970-71	640	586	54	352	297	55
1971-72	661	572	89	348	302	46
1972-73	698	647	51	337	302	35
1973-74	850	785	65	340	300	40

TABLE 1-24

Percentage distribution of net domestic product—India and Kerala

Sector	India			Kerala		
	1960-61	1968-69	1973-74	1960-61	1968-69	1973-74
(1)	(2)	(3)	(4)	(5)	(6)	(7)
<i>At current prices</i>						
Primary sector	52.2	51.1	52.8	56.0	54.0	57.5
Secondary sector	19.1	18.9	18.3	15.2	14.6	10.9
Tertiary sector	28.7	30.0	28.9	28.8	31.4	31.6
<i>At 1960-61 prices</i>						
Primary sector	52.2	44.4	42.8	56.0	50.2	47.9
Secondary sector	19.1	23.2	22.4	15.2	17.3	16.7
Tertiary sector	28.7	32.4	34.8	28.8	32.5	33.4



SECTION 2
WORKING POPULATION

SECRET

TOP SECRET - COMINT

TABLE 2-1

Working population of Kerala by industrial category and sex—1961 and 1971

Industrial category	1961			1971		
	Persons	Males	Females	Persons	Males	Females
(1)	(2)	(3)	(4)	(5)	(6)	(7)
Total workers	5630333 (100)	3947038 (100)	1683295 (100)	6216459 (100)	4764582 (100)	1451877 (100)
1. Cultivators	1178103 (20·92)	904502 (22·91)	273601 (16·25)	1106663 (17·80)	1039331 (21·81)	67332 (4·64)
2. Agricultural labourers	978396 (17·38)	516914 (13·10)	461482 (27·41)	1908114 (30·69)	1195755 (25·10)	712359 (49·06)
3. Mining, Quarrying, Livestock, Forestry, Fishing, Plantation and Allied Activities	487359 (8·65)	398622 (10·10)	88737 (5·27)	464715 (7·47)	384021 (8·06)	80694 (5·56)
4. Household Industry	488562 (8·68)	188654 (4·78)	299908 (17·82)	265892 (4·27)	147625 (3·09)	118267 (8·15)
5. Manufacturing other than household Industry	529472 (9·40)	392950 (9·96)	136522 (8·11)	711962 (11·46)	533353 (11·19)	178609 (12·30)
6. Construction	70702 (1·26)	67664 (1·71)	3038 (0·18)	107449 (1·73)	103098 (2·16)	4351 (0·30)
7. Trade and Commerce	321933 (5·72)	298218 (7·56)	23715 (1·41)	565648 (9·10)	536887 (11·28)	28761 (1·98)
8. Transport, storage and communication	152513 (2·71)	144913 (3·67)	7600 (0·45)	242089 (3·89)	227576 (4·78)	14513 (1·00)
9. Other services	1423293 (25·28)	1034601 (26·21)	388692 (23·10)	843927 (13·59)	596936 (12·53)	246991 (17·01)

Source: Census reports 1961 and 1971.

TABLE 2-2

Distribution of working force by industrial category and sex—Rural
1961 and 1971

Industrial category	1961			1971		
	Persons	Male	Female	Persons	Male	Female
(1)	(2)	(3)	(4)	(5)	(6)	(7)
Total workers	4875201 (100)	3357206 (100)	1517995 (100)	5281004 (100)	4009495 (100)	1271509 (100)
1. Cultivators	1141391 (23·41)	877346 (26·13)	264045 (17·40)	1068823 (20·24)	1004486 (25·05)	64337 (5·06)
2. Agricultural labourers	947978 (19·44)	501978 (14·95)	446000 (29·38)	1814824 (34·37)	1134946 (28·31)	679878 (53·47)
3. Mining, Quarrying Livestock, Forestry, Fishing, Plantations Orchards and Allied Activities	444335 (9·11)	357149 (10·64)	87186 (5·74)	415609 (7·87)	336543 (8·39)	79066 (6·21)
4. Household Industry	441003 (9·05)	168672 (5·03)	272331 (17·94)	231691 (4·39)	126551 (3·16)	105140 (8·27)
5. Manufacturing other than Household Industry	393915 (8·08)	280911 (8·37)	113004 (7·44)	536195 (10·16)	336379 (9·64)	149816 (11·78)
6. Construction	56858 (1·17)	54451 (1·62)	2407 (0·16)	84744 (1·60)	81785 (2·04)	2959 (0·23)
7. Trade and Commerce	221140 (4·54)	205039 (6·11)	16101 (1·06)	391854 (7·42)	373553 (9·32)	18301 (1·44)
8. Transport, Storage and Communication	94971 (1·95)	89397 (2·66)	5574 (0·37)	149728 (2·83)	139337 (3·48)	10391 (0·82)
9. Other services	1133610 (23·25)	822263 (24·49)	311347 (20·51)	587536 (11·12)	425915 (10·61)	161621 (12·72)

TABLE 2.3

**Distribution of working force by industrial category and sex—Urban
1961 and 1971**

<i>Industrial category</i>	1961			1971		
	<i>Persons</i>	<i>Male</i>	<i>Female</i>	<i>Persons</i>	<i>Male</i>	<i>Female</i>
(1)	(2)	(3)	(4)	(5)	(6)	(7)
Total workers	755132 (100)	589832 (100)	165300 (100)	935455 (100)	755087 (100)	180368 (100)
1. Cultivators	36712 (4.86)	27156 (4.60)	9556 (5.78)	37840 (4.05)	34845 (4.61)	2995 (1.66)
2. Agricultural labourers	30418 (4.03)	14936 (2.53)	15482 (9.37)	93290 (9.97)	60809 (8.05)	32481 (18.00)
3. Mining, Quarrying, Livestock, Forestry, Fishing, Plantations, Orchards and Allied Activities	43024 (5.70)	41473 (7.03)	1551 (0.94)	49106 (5.25)	47478 (6.29)	1628 (0.90)
4. Household Industry	47559 (6.30)	19982 (3.39)	27577 (16.68)	34201 (3.66)	21074 (2.79)	13127 (7.27)
5. Manufacturing other than Household Industry	135557 (17.95)	112039 (19.00)	23518 (14.23)	175767 (18.79)	146974 (19.46)	28793 (15.97)
6. Construction	13844 (1.83)	13213 (2.24)	631 (0.38)	22705 (2.43)	21313 (2.82)	1392 (0.77)
7. Trade & Commerce	100793 (13.35)	93179 (15.80)	7614 (4.61)	173794 (18.57)	163334 (21.64)	10460 (5.80)
8. Transport, Storage and Communication	57542 (7.62)	55516 (9.41)	2026 (1.22)	92361 (9.87)	88239 (11.69)	4122 (2.30)
9. Other services	289683 (38.36)	212338 (36.00)	77345 (46.79)	256391 (27.41)	171021 (22.65)	85370 (47.33)

TABLE 2.4
Distribution of workers in Kerala by districts 1961 and 1971
Rural & Urban

Sl. No.	District	1961			1971		
		Total	Rural	Urban	Total	Rural	Urban
(1)	(2)	(3)	(4)	(5)	(6)	(7)	(8)
1.	Trivandrum	540891	410001	130890	628293	470801	157492
2.	Quilon	631350	586654	44696	690283	637496	52787
3.	Alleppey	610424	518814	91610	598468	504619	93849
4.	Kottayam	387179	340208	46971	420659	363861	52798
5.	Idikki	230782	230782	..	265090	257562	7528
6.	Ernakulam	564437	449529	114908	621117	446075	175042
7.	Trichur	559034	504539	54515	603551	538506	65045
8.	Palghat	550375	502596	47779	604825	541055	63770
9.	Malappuram	447248	424053	23195	502644	470780	31864
10.	Kozhikode	478874	372103	106771	566936	428280	138656
11.	Cannanore	629719	535922	93797	714593	621969	92624
	Total—Kerala	5630333	4875201	755132	6216459	5281004	935455

Source: Census records 1961 and 1971.

TABLE 2.5
Variation in working population in 1971 over 1961 in each district
Rural & Urban

Sl. No.	District	Absolute variation			Percentage variation		
		Total	Rural	Urban	Total	Rural	Urban
(1)	(2)	(3)	(4)	(5)	(6)	(7)	(8)
1.	Trivandrum	87402	60800	26602	16.1	14.8	20.3
2.	Quilon	58933	50842	8091	9.3	8.7	18.1
3.	Alleppey	-11956	-14195	+2239	-2.0	-2.7	+2.4
4.	Kottayam	33480	23653	9827	8.6	7.0	20.9
5.	Idikki	34308	26780	7528	14.9	11.6	100.0
6.	Ernakulam	56680	-3454	60134	10.0	-0.8	5.8
7.	Trichur	44497	33967	10530	7.9	6.7	19.3
8.	Palghat	54450	38459	15991	9.3	7.7	33.5
9.	Malappuram	55396	46727	8669	12.4	11.0	37.4
10.	Kozhikode	88062	56177	31885	18.4	15.1	29.9
11.	Cannanore	84874	86047	-1173	13.5	16.1	-1.2
	Total—Kerala	586126	405803	180323	10.4	8.3	23.9

Source: Census figures.

TABLE 2.6

Work participation rates in each district in 1961 and 1971

Sl. No.	District	Participation rate	
		1961	1971
(1)	(2)	(3)	(4)
1.	Trivandrum	31.0	28.6
2.	Quilon	32.4	28.6
3.	Alleppey	33.8	28.2
4.	Kottayam	29.1	27.3
5.	Idikki	39.1	34.6
6.	Ernakulam	33.6	28.7
7.	Trichur	33.1	28.4
8.	Palghat	40.2	35.9
9.	Malappuram	32.2	27.1
10.	Kozhikode	30.1	26.9
11.	Cannanore	35.4	30.2
Total--Kerala		33.3	29.1

Source: Census figures.

TABLE 2.7
Percentage distribution of workers in Kerala by industrial category and sex to total population 1901-1971

Year	Sex	Total population	Total workers	I	II	III	IV	V	VI	VII	VIII	IX
(1)	(2)	(3)	(4)	(5)	(6)	(7)	(8)	(9)	(10)	(11)	(12)	(13)
				Cultivators	Agricultural Labourers	Mining, Quarrying, Livestock, Poultry	Household industry	Manufacturing other than household industry	Construction	Trade and Commerce	Transport, storage & communication	Other workers
1901	Persons	100.0	44.5	16.3	7.8	3.7	..	7.6	0.3	4.5	1.0	3.3
	Male	100.0	56.3	19.9	10.2	6.7	..	7.1	0.6	5.4	1.9	4.5
1911	Female	100.0	32.7	12.7	5.3	0.8	..	8.2	0.1	3.5	0.1	2.0
	Persons	100.0	41.3	11.5	10.2	3.9	..	7.3	0.5	3.9	0.8	3.2
1921	Male	100.0	53.8	18.4	9.8	6.8	..	6.8	0.9	5.0	1.6	4.5
	Female	100.0	28.9	4.5	10.7	1.0	..	7.8	0.1	2.8	0.1	1.9
1931	Persons	100.0	37.9	10.8	8.7	3.6	..	6.6	0.3	3.8	0.8	3.3
	Male	100.0	51.1	16.9	8.9	6.3	..	7.0	0.5	5.2	1.5	4.8
1941	Female	100.0	24.9	4.7	8.4	1.0	..	6.3	0.1	2.5	0.2	1.7
	Persons	100.0	42.9	8.9	4.1	4.1	..	6.2	0.6	3.3	0.7	12.0
1951	Male	100.0	50.0	15.2	8.1	6.6	..	6.5	1.0	5.5	1.5	5.6
	Female	100.0	35.9	2.7	6.2	1.7	..	5.8	0.1	1.1	N	18.3
1961	Persons
	Male
1971	Female	100.0	32.3	7.5	8.2	2.4	..	6.1	0.5	2.1	1.0	4.5
	Persons	100.0	46.7	12.0	10.6	3.5	..	7.3	0.9	3.9	1.9	6.6
1971	Male	100.0	18.3	3.1	5.9	1.4	..	4.9	0.1	0.4	0.1	2.4
	Female	100.0	33.3	7.0	5.8	2.8	2.9	3.2	0.4	1.9	0.9	8.4
1971	Persons	100.0	47.2	10.8	6.2	4.8	2.2	4.7	0.8	3.6	1.7	12.4
	Male	100.0	19.7	3.2	5.1	1.0	3.5	1.6	N*	0.3	0.1	4.6
1971	Female	100.0	29.1	5.2	8.9	2.2	1.2	3.3	0.5	2.6	1.2	4.0
	Persons	100.0	45.0	9.8	11.3	3.6	1.4	5.0	1.0	5.1	2.2	5.6
1971	Male	100.0	13.5	0.6	6.6	0.7	1.1	1.7	N*	0.3	0.2	2.3
	Female	100.0

Source: Census of India 1961 Vol. VII and 1971 Census figures.

N.—Negligible

TABLE 2.8
Percentage distribution of workers by industrial category and by broad age-groups 1961

Industrial category	Total						Age not specified						
	0-14		15-34		35-59		60 & above		Male		Female		
	(1)	(2)	(3)	(4)	(5)	(6)	(7)	(8)	(9)	(10)	(11)	(12)	(13)
Total workers	100.00	100.00	2.02	4.10	48.35	53.01	38.34	41.75	38.34	7.85	4.51	0.03	0.04
I. Cultivators	100.00	100.00	0.92	1.53	38.93	49.05	44.01	44.01	40.22	16.12	9.18	0.02	0.02
II. Agricultural labourers	100.00	100.00	2.37	2.59	52.65	55.60	39.13	38.46	5.82	3.32	0.03	0.03	0.03
III. Mining etc.	100.00	100.00	3.49	4.22	46.27	57.87	42.57	34.43	7.65	3.45	0.03	0.03	0.03
IV. Household Industry	100.00	100.00	4.63	6.84	47.97	51.65	39.03	36.62	8.32	4.84	0.05	0.05	0.05
V. Manufacturing other than Household Industry	100.00	100.00	2.47	4.28	56.23	63.92	37.52	29.81	3.75	1.96	0.03	0.03	0.03
VI. Construction	100.00	100.00	0.93	7.14	53.00	65.31	40.90	26.27	5.14	1.28	0.03
VII. Trade & Commerce	100.00	100.00	0.89	1.37	49.35	38.66	44.54	52.67	5.18	7.27	0.04	0.03	0.03
VIII. Transport & Communication	100.00	100.00	0.65	2.00	51.64	63.39	45.16	33.25	2.52	1.33	0.03	0.03	0.03
IX. Other services	100.00	100.00	2.21	5.67	51.25	53.66	41.62	37.20	4.88	3.43	0.04	0.04	0.04

TABLE 2.9
Work participation rates in broad age-groups—Rural and urban 1961

Age group	Total			Rural			Urban		
	Persons (2)	Male (3)	Female (4)	Persons (5)	Male (6)	Female (7)	Persons (8)	Male (9)	Female (10)
0-14	2.07	2.19	1.94	2.07	2.19	1.96	2.03	2.24	1.82
15-34	54.68	76.48	32.61	55.23	77.75	35.00	44.63	70.13	19.49
35-59	65.96	94.39	37.29	67.27	94.95	39.53	58.84	91.38	24.89
15-59	59.18	83.85	34.42	60.05	84.87	36.76	50.21	78.62	21.57
60 & above	39.11	65.64	14.76	40.72	67.82	15.53	29.54	52.07	10.39
Age not specified	46.42	61.37	30.31	46.10	60.92	30.30	57.14	73.97	39.43
Total	33.31	47.20	19.71	33.97	47.42	20.88	29.57	45.98	13.00

Source: Census of India 1961 Vol. VII.

TABLE 2.10

Work participation rates in different States 1961 & 1971

State	1961	1971
(1)	(2)	(3)
INDIA	42.98	32.92
Andhra	51.87	41.39
Assam	42.65	28.35
Bihar	41.40	31.03
Gujarat	41.07	31.45
Haryana	37.92	26.44
Himachal Pradesh	53.90	36.94
Jammu and Kashmir	42.79	29.76
Karnataka	45.48	34.74
Kerala	33.31	29.12
Madhya Pradesh	52.30	36.72
Maharashtra	47.91	36.48
Manipur	45.89	34.57
Meghalaya	52.49	44.17
Nagaland	59.40	50.78
Orissa	43.66	31.22
Punjab	31.13	28.88
Rajasthan	47.55	31.24
Tamil Nadu	45.57	35.78
Tripura	38.29	27.79
Uttar Pradesh	39.12	30.94
West Bengal	33.16	27.91

Source: Indian Labour Statistics 1974.

TABLE 2.11
Percentage distribution of working force by occupational division and sex—Rural and urban 1961

Occupational	Total						Rural				Urban								
	(1)	(2)		(3)		(4)		(5)		(6)		(7)		(8)		(9)		(10)	
		Persons	Male	Female	Persons	Male	Female	Persons	Male	Female	Persons	Male	Female	Persons	Male	Female	Persons	Male	Female
All Division	100.00	100.00	100.00	100.00	100.00	100.00	100.00	100.00	100.00	100.00	100.00	100.00	100.00	100.00	100.00	100.00	100.00	100.00	100.00
0. Professional, Technical and related works	6.24	6.16	6.43	5.91	6.11	5.43	7.54	6.36	12.15										
1. Administrative, Executive and Managerial workers	3.47	4.59	0.49	3.25	4.39	0.46	4.37	5.32	0.68										
2. Clerical and related workers	3.10	4.02	0.66	2.02	2.73	0.30	7.48	8.68	2.78										
3. Sales workers	8.32	10.61	2.24	7.49	9.80	1.83	11.70	13.50	4.65										
4. Farmers, Fishermen and related workers	13.99	15.56	9.83	15.79	17.70	11.10	6.74	7.83	2.47										
5. Miners, quarrymen and related workers	0.49	0.66	0.05	0.59	0.80	0.06	0.10	0.12	0.01										
6. Works in Transport and Communication	2.57	3.50	0.10	2.11	2.94	0.07	4.46	5.54	0.24										
7. Craftsmen, production process workers and labourers N.C.C.	53.83	48.48	68.06	56.16	50.07	71.08	44.35	42.75	50.61										
8. Service, sports and recreation workers	7.73	6.03	12.11	6.54	5.27	9.65	12.54	9.02	26.29										
9. Workers not classified by occupation	0.26	0.34	0.03	0.14	0.19	0.02	0.72	0.88	0.12										

Source: Census of India 1961 Vol. VII.

TABLE—2.12

Percentage distribution of gainfully employed persons by occupation and sex—rural and urban July 1958—June 1959

Occupational Group	Urban			Rural		
	Persons	Male	Female	Persons	Male	Female
(1)	(2)	(3)	(4)	(5)	(6)	(7)
1. Professional, Technical and related works	5.95	5.76	6.68	3.12	3.68	1.87
2. Administrative, executive managerial, clerical and related works	9.45	11.35	..	1.23	1.73	0.13
3. Distribution and financial service occupation	8.59	16.85	3.52	6.88	8.90	2.44
4. Agricultural, animal husbandry, forestry, fishing and hunting	17.33	18.28	13.76	57.41	58.79	54.48
5. Miners and related workers	0.21	0.26	..	0.39	0.57	..
4. Transport and Communication works	4.01	5.06	..	1.46	1.96	0.36
7. Crafts and production process	27.50	25.68	34.45	22.90	19.48	30.34
8. Domestic and personal and other miscellaneous service	26.87	16.05	41.59	6.35	4.73	9.93
9. Not recorded	0.09	0.11	..	0.26	0.16	0.48
Total	100.00	100.00	100.00	100.00	100.00	100.00

Source: Fourteenth round of N. S. S. report No. I and V Kerala Bureau of Economics and Statistics.

TABLE—2.13
 Percentage distribution of gainfully employed persons by
 occupation and sex—rural and urban July 1960—June 1961

Occupational group (1)	Urban			Rural		
	Persons (2)	Male (3)	Female (4)	Persons (5)	Male (6)	Female (7)
1. Professional, technical and related works	6.04	NA	NA	2.17	2.44	1.55
2. Administrative, executive and managerial	3.13	NA	NA	0.70	0.97	..
3. Clerical and related workers	7.64	NA	NA	1.74	2.40	..
4. Sales workers	11.41	NA	NA	7.30	9.24	2.21
5. Farms, Fishermen, hunters and related workers	17.91	NA	NA	51.46	53.48	46.19
6. Miners, quarrymen and related workers	0.06	NA	NA	0.49	0.67	..
7. Workers in transport and communication	4.99	NA	NA	0.92	1.22	0.11
8. Craftsmen production process workers and labourers not classified elsewhere	34.29	NA	NA	25.11	22.69	31.49
9. Services, sports and other related workers	12.77	NA	NA	3.91	2.49	7.62
10. Non-classified occupation	1.35	NA	NA	2.32	2.02	3.09
11. Not recorded	0.41	NA	NA	3.88	2.41	7.74
Total	100.00	NA	NA	100.00	100.00	100.00

Source: N.S.S. reports 4 and 12 based on 16th round of N.S.S. Bureau of Economics and Statistics.

TABLE—2.14
 Percentage distribution of employed persons by occupation 1965

Occupation (1)	Persons (2)	Male (3)	Female (4)
1. Professional, technical and related workers	3.75	3.61	4.12
2. Administrative, executive and managerial workers	1.13	1.45	0.27
3. Clerical and related workers	2.72	3.42	0.88
4. Sales workers	7.84	9.88	2.43
5. Farmers, fishermen, hunters, loggers and related workers	52.69	53.24	51.23
6. Miners, quarrymen and related workers	0.84	1.01	0.37
7. Workers in transport and communications	2.32	3.06	0.34
8. Craftsmen and production process workers	21.13	18.16	29.04
9. Service, sports and related workers	7.58	6.17	11.82
Total	100.00	100.00	100.00

Source: Survey of Employment and Unemployment Kerala—1965.

SECTION 3

SECTORAL EMPLOYMENT



TABLE 3-1

Percentage of agricultural labourers in Kerala to the total population 1901-1971

<i>Year</i>	<i>Persons</i>	<i>Male</i>	<i>Female</i>
1901	7.8	10.2	5.3
1911	10.2	9.8	10.7
1921	8.7	8.9	8.4
1931	7.1	8.1	6.2
1941
1951	8.2	10.6	5.9
1961	5.8	6.2	5.4
1971	8.9	11.4	6.6

Source: Census of India 1961—Volume VII and 1971 Census figures.

TABLE 3-2

Employment in working factories in Kerala in public and private sectors—1959-1974

<i>Year</i>	<i>Public Sector</i>		<i>Private Sector</i>		<i>Total</i>	
	<i>Number</i>	<i>Employment ('000)</i>	<i>Number</i>	<i>Employment ('000)</i>	<i>Number</i>	<i>Employment ('000)</i>
(1)	(2)	(3)	(4)	(5)	(6)	(7)
1959	35	6	2223	154	2258	160
1960	36	7	2364	160	2400	167
1961	38	5	2436	166	2474	171
1962	53	6	2506	169	2559	175
1963	55	7	2532	169	2587	176
1964	74	12	2598	174	2672	186
1965	75	15	2745	180	2820	195
1966	79	16	2832	183	2911	199
1967	84	16	2761	186	2845	202
1968	87	18	2785	186	2872	204
1969	91	19	2944	185	3035	204
1970	94	18	2946	187	3040	205
1971	124	29	2900	178	3024	207
1972	142	41	3357	185	3499	226
1973	156	45	4890	199	5046	244
1974	173	52	5863	207	6036	259

Source: Bureau of Economics and Statistics.

TABLE 3.3
District-wise and industry-wise distribution of registered working factories and workers in Kerala 1974

Industry	Trivandrum		Quilon		Alleppey		Kottayam		Idikki		Ernakulam	
	A	B	A	B	A	B	A	B	A	B	A	B
(1)	(2)	(3)	(4)	(5)	(6)	(7)	(8)	(9)	(10)	(11)	(12)	(13)
Oil	26	150	19	113	52	359	18	72	8	64	46	248
Tea	5	171	8	228	5	34	77	3555
Cashew	20	7670	229	101923	4	5116	4	939
Beedi	3	36
Cotton textiles	10	1453	1	1139	3	454	1	239	1	10	5	1155
Coir	4	95	1	52	191	3075	2	33	20	424
Saw mills	6	37	59	419	24	140	47	315	2	39	132	1193
Plywood & splints and veneers	5	231	29	1163	11	701	19	616	2	82	22	627
Printing	45	1576	26	394	24	158	67	862	3	25	87	1310
Rubber	4	475	20	528	3	158	125	2077	6	57	15	190
Chemical and Chemical Products	5	606	2	81	8	161	13	472	2	57	27	5252
Matches	2	62	7	87	5	84	2	59	2	98
Soaps	2	21	2	5	16	1003
General Engineering	7	387	8	325	10	90	12	86	3	176	58	584
Tiles	1	48	43	2268	3	78	15	149	29	682
Automobile repairing	24	2324	17	265	8	290	44	581	8	239	43	864
Other Industries	76	1630	169	5056	118	2834	168	2183	12	291	457	18285
Total	240	16855	638	114041	466	13719	540	7783	124	4598	966	32830

TABLE 3.3—(cont.)

Industry	Trichur		Palghat		Malappuram		Kozhikode		Cannanore		Total	
	A	B	A	B	A	B	A	B	A	B	A	B
(1)	(14)	(15)	(16)	(17)	(18)	(19)	(20)	(21)	(22)	(23)	(24)	(25)
Oil	99	690	10	52	8	74	32	185	18	119	336	2136
Tea	1	78	3	128	13	745	5	141	117	5080
Cashew	4	1983	1	958	3	1410	265	119999
Beedi	3	58	15	543	1	25	10	337	32	999
Cotton textiles	7	2596	11	865	1	180	40	1844	295	8771	375	18706
Coir	7	52	1	5	2	18	28	575	4	44	260	4313
Saw mills	100	1026	73	477	22	124	92	1398	60	863	617	6031
Plywood & splints and veneers	27	712	43	1110	10	222	46	1116	30	2003	244	8583
Printing	57	796	28	340	11	80	61	1121	40	277	449	6939
Rubber	13	331	10	100	5	113	23	320	3	55	227	4404
Chemical and Chemical Products	20	366	8	167	2	448	16	358	4	41	107	8029
Matches	27	366	10	254	9	133	2	21	66	1164
Soaps	7	111	2	10	12	388	2	14	43	1552
General Engineering	40	676	13	197	1	4	25	324	21	147	198	2996
Tiles	135	4480	13	614	2	310	31	3411	8	649	280	12689
Automobile repairing	35	402	31	254	9	75	88	1211	58	458	365	6963
Other Industries	209	4740	274	4092	29	229	354	6914	148	2130	2055	48387
Total	832	19483	545	9208	102	1877	872	21026	711	17480	6036	258960

A. Number of factories.

B. Average daily employment.

TABLE 3.4

Average daily employment in plantation—Tea

District	1970						1971						1972					
	Garden Labour		Outside Labour		Total		Garden Labour		Outside Labour		Total		Garden Labour		Outside Labour		Total	
	(2)	(3)	(4)	(5)	(6)	(7)	(8)	(9)	(10)	(11)	(12)	(13)	(14)	(15)	(16)			
(1)	Field	Factory	Field	Factory	Field	Factory	Field	Factory	Field	Factory	Field	Factory	Field	Factory	Field	Factory	Field	Factory
Trivandrum	1995	143	185	18	2343	1672	134	159	24	1989	1716	131	109	16	1972			
Quilon	3073	229	370	14	3686	3381	174	210	7	3772	3334	169	276	11	3790			
Alleppey			
Kottayam and Idikki	43997	3577	4529	229	52332	43688	3553	19513	156	66910	43918	3330	1216	157	48621			
Ernakulam	328	34	34	..	396	328	34	34	..	396	328	34	34	..	396			
Trichur	1025	72	1097	1041	68	1109	820	62	882			
Palghat	257	21	143	13	434	1314	87	158	31	1590	1372	120	123	8	1623			
Malappuram	136	19	16	5	176	171	20	24	4	219	171	20	24	4	219			
Kozhikode	7094	384	1349	49	9076	720	545	1327	65	2657	7145	488	1449	90	9172			
Cannanore	1527	136	796	24	2483	1793	142	788	199	2928	2118	155	650	27	2950			
Total—Kerala	59432	4817	7422	352	72023	54114	4757	22213	486	81570	60922	4509	3881	313	69625			

Source: Bureau of Economics and Statistics (Provisional).

TABLE 3.5

Average daily employment in plantation—Rubber

District	1970				1971				1972				1973			
	Garden Labour		Outside Labour		Total Garden Labour		Total Outside Labour		Total Garden Labour		Total Outside Labour		Total Garden Labour		Total Outside Labour	
	Per- manent	P	T	(4)	(5)	(6)	(7)	(8)	(9)	(10)	(11)	(12)	(13)	(14)	(15)	(16)
Trivandrum	2738	2097	3383	8218	2881	2206	3539	8646	2965	2270	3662	8897	2973	2276	3572	8821
Quilon	16647	7948	8115	32710	17000	8117	8287	33404	17255	8239	8411	33905	17459	8336	8510	34305
Alleppey	1787	856	880	3523	1854	888	913	3655	1893	907	932	3732	1888	905	930	3723
Kottayam	16320	5175	8073	29568	16605	5265	8214	30084	16937	5370	8378	30685	15165	4809	7480	27454
Idikki	8345
Ernakulam	7703	2442	3774	13919	7859	2492	3851	14202	8016	2542	3928	14486	5892	1869	2906	10667
Trichur	3885	1950	5852	11687	4144	2080	6242	12466	4514	2265	6799	13578	4129	2072	6219	12420
Palghat	1840	752	1162	3754	2076	849	1312	4237	2512	1025	1586	5123	2557	1043	1614	5214
Malappuram	5599	2230	3537	11426	5706	2334	3605	11645	5997	2453	3789	12239	5742	2348	3624	11717
Kozhikode	5088	2080	3215	10383	5305	2169	3352	10826	5501	2249	3476	11226	5649	2310	3570	11529
Cannanore	5157	2109	3270	10536	5219	2134	3309	10662	5527	2260	3504	11291	6674	2729	4231	13634
Total— Kerala	66764	27699	41261	135724	68649	28534	42644	139827	71117	29580	44465	145162	72683	30141	45005	147829

Provisional—Source: Bureau of Economics and Statistics.

P. Permanent.

T. Temporary.

TABLE 3.6

Average daily employment in plantation—Coffee

District	1971-72				1972-73				1973-74				
	Garden Labour		Outside labour		Garden Labour		Outside labour		Garden Labour		Outside labour		Total
	P	T	P	T	P	T	P	T	P	T	P	T	(13)
(1)	(2)	(3)	(4)	(5)	(6)	(7)	(8)	(9)	(10)	(11)	(12)	(13)	
Trivandrum	1	1	1	3	15	15	15	45	15	15	15	45	
Quilon	76	2	224	302	76	2	224	302	78	2	230	310	
Alleppey
Kottayam	1856	174	2010	4040	1858	174	2012	4044	712	64	719	1495	
Idikki	1226	110	1237	2573	
Ernakulam	151	6	16	173	151	6	16	173	60	5	61	126	
Trichur
Palghat	7722	420	235	8377	8479	461	258	9198	9309	506	283	10098	
Kozhikode	9933	15555	2401	27889	10450	16364	2526	29340	10575	16560	2556	29691	
Cannanore	1657	3373	596	5626	1743	3548	627	5918	1910	3887	687	6484	
Total—Kerala	21396	19531	5483	46410	22772	20570	5678	49020	23885	21149	5788	50822	

Provisional Estimate—Source: Bureau of Economics and Statistics.

P. Permanent.

T. Temporary.

TABLE 3.7

**Number of working Factories and Employment in India State-wise—
Employment in '000**

Sl. No.	State	1961		1971	
		No. of Factories	Average daily employment	No. of Factories	Average daily employment
(1)	(2)	(3)	(4)	(5)	(6)
1.	Andhra Pradesh	4984	228	7695	266
2.	Assam	1250	80	1434	77
3.	Bihar	6058	192	18041	285
4.	Gujarat	3841	361	5819	445
5.	Haryana	1459	94
6.	Himachal Pradesh	27	2	169 E	11 E
7.	Jammu and Kashmir	220	11
8.	Karnataka	2311	178	3806	280
9.	Kerala	2468	172	3033	208
10.	Madhya Pradesh	1947	169	3332	222
11.	Maharashtra	8308	827	10327	1050
12.	Manipur	34	..	205 E	2 E
13.	Orissa	494	38	938	71
14.	Punjab	3510*	132*	4561	119
15.	Rajasthan	915	57	2028	88
16.	Tamil Nadu	5626	330	5961	460
17.	Tripura	57	2	67	2
18.	Uttar Pradesh	2837	338	4052	420
19.	West Bengal	4333	739	5597	839
	All India (including Union Territories)	50095	3918	80996	5079

E—Estimated.

*—Includes Haryana also.

Source: Indian Labour Statistics 1974.

TABLE 3.8

Employment in establishments (covered under EMI) in Kerala by industry division—1970-74

Industry Division	March											
	1970		1971		1972		1973		1974		1974	
	No.	%	No.	%	No.	%	No.	%	No.	%	No.	%
(1)	(2)	(3)	(4)	(5)	(6)	(7)	(8)	(9)	(10)	(11)	(12)	(13)
0. Agriculture, Forestry etc.	92931	13.2	92055	12.6	87741	11.7	89112	11.5	87328	11.2		
1. Mining and Quarrying	557	0.1	610	0.2	614	0.1	829	0.1	749	0.1		
2 & 3. Manufacturing.	200380	28.5	188924	26.7	221475	29.4	233230	30.1	224436	28.9		
4. Construction	22263	3.2	23562	3.4	24711	3.3	24144	3.1	25536	3.3		
5. Electricity, Gas, Water and Sanitary services	11076	1.6	11850	1.7	12443	1.6	12922	1.6	12979	1.7		
6. Trade and Commerce	22077	4.0	30312	4.3	30562	4.1	31719	4.1	32219	4.2		
7. Transport & Communications	53001	7.5	54212	7.7	55103	7.3	58197	7.4	57381	7.4		
8. Services	294495	41.9	307470	43.4	320330	42.5	326133	42.1	335965	43.2		
Total	702880	100.00	707965	100.00	752979	100.00	776286	100.00	776593	100.00		

Source: Directorate of Employment, Trivandrum.

Note.—In the private sector only establishments employing 10 or more persons are covered.

TABLE 3.9

Employment in establishments in public sector in Kerala by industry division—1970-74

Industry Division	March											
	1970		1971		1972		1973		1974		1974	
	No.	%	No.	%	No.	%	No.	%	No.	%	No.	%
(1)	(2)	(3)	(4)	(5)	(6)	(7)	(8)	(9)	(10)	(11)	(10)	(11)
0. Agriculture, Livestock, Forestry, Fishing, etc.	10481	3.6	11304	3.6	11795	3.5	11982	3.4	12525	3.4	12525	3.4
1. Mining and Quarrying	14
2 & 3. Manufacturing	18216	6.2	20868	6.6	31548	9.4	38461	11.0	42656	11.6	42656	11.6
4. Construction	18376	6.3	19428	6.2	19722	5.9	18920	5.4	21104	5.8	21104	5.8
5. Electricity, Gas, Water and Sanitary services	10690	3.6	11633	3.7	12206	3.6	12552	3.6	12728	3.5	12728	3.5
6. Trade & Commerce	10868	3.7	12847	4.1	14060	4.2	14718	4.2	15441	4.2	15441	4.2
7. Transport, Storage and Communications	45832	15.6	48260	15.4	48846	14.5	51746	14.8	51997	14.2	51997	14.2
8. Service	178855	61.0	189752	60.4	198174	58.9	201873	57.6	210201	57.3	210201	57.3
Total	293318	100.00	314092	100.00	336365	100.00	350252	100.00	366652	100.00	366652	100.00

Source: Directorate of Employment.

TABLE 3-10
Employment in the public and private sectors in Kerala.

<i>Period ending</i>	<i>Public Sector</i>	<i>Private Sector</i>	<i>Total</i>
(1)	(2)	(3)	(4)
31-12-1961	209423	330131	539554
31-12-1962	228338	388982	617320
31-12-1963	238544	405174	643718
31-12-1964	249638	443583	692221
31-12-1965	261892	460225	722117
31-12-1966	261321	434562	695883
31-12-1967	266366	425851	692217
31-12-1968	279475	438672	718147
31-12-1969	291082	427715	718797
31-12-1970	293318	409562	702880
30-6-1971	319926	406114	726040
31-12-1971	333247	415105	748352
30-6-1972	338145	420045	758190
31-12-1972	350070	427375	777445
30-6-1973	357658	421917	779575
31-12-1973	365445	413230	778675
30-6-1974	368132	414368	782500
31-12-1974	375943	414477	790420

Source: Directorate of Employment, Trivandrum

TABLE 3.11
Employment in the public and private sectors in Kerala by District
 as on 31st March 1961-1975

District	1961	1962	1963	1964	1965	1966	1967	1968	1969	1970	1971	1972	1973	1974	1975
(1)	(2)	(3)	(4)	(5)	(6)	(7)	(8)	(9)	(10)	(11)	(12)	(13)	(14)	(15)	(16)
Trivandrum	67754	72866	75243	79647	80878	82121	81207	81535	85164	86488	87580	96362	101359	98795	98922
Quilon	115303	113572	114475	121129	141832	142479	126682	121390	120825	104216	98357	117945	128856	123290	121746
Alleppey	38465	40462	40598	55941	48130	48310	49313	48812	49009	48265	46847	51551	52179	52585	53382
Kottayam	55434	62872	71370	88367	91347	96809	93837	93624	94000	92808	92382	91379	43162	42269	42119
Idikki	55619	60055 60651
Ernakulam	63969	59719	66401	66944	78162	83943	82567	96198	99514	101381	104728	106805	96297	97835	98187
Trichur	53435	54236	56213	61282	63509	63117	64252	63052	63832	63112	65302	68065	68852	68693	68838
Palghat	43428	48612	57308	56609	55229	57357	53442	58222	55318	59931	54811	54378	54513	55077	56789
Malappuram	15962	26095	28173	28803	30592
Kozhikode	67629	77035	84432	87459	90821	90654	92275	93467	95261	93469	78175	78712	79466	81976	80037
Cannanore	32397	37965	41420	41568	44201	44617	45592	46499	46394	53210	57612	62430	64002	67412	69867
Kerala	537814	567069	607450	658946	694139	709407	689167	702797	715317	702880	701766	753722	775478	776790	781130

Source: Directorate of Employment, Trivandrum.

TABLE 3.12

Employment in the private sector by District as on 31st March 1961-1975

District	1961	1962	1963	1964	1965	1966	1967	1968	1969	1970	1971	1972	1973	1974	1975
(1)	(2)	(3)	(4)	(5)	(6)	(7)	(8)	(9)	(10)	(11)	(12)	(13)	(14)	(15)	(16)
Trivandrum	29545	31309	32392	30384	32265	31452	29748	28596	29036	26917	24306	28638	29511	25536	23700
Quilon	93194	92707	93810	98835	118195	118485	101639	96131	94401	77207	66217	79984	85066	77408	749277
Alleppey	21350	22410	23113	38316	29697	29962	29845	28685	28388	26394	22980	23684	23730	22447	2323
Kottayam	33523	46284	53776	65560	72771	77738	75129	74590	73431	71718	70973	69296	24827	23372	23448
Idikki	53347	51224	51232
Ernakulam	38888	30656	31496	31496	37111	39526	39161	48620	49138	48528	49056	48847	40536	41038	40897
Trichur	36000	36906	38566	40635	44172	42253	43814	43527	43009	41398	41377	43214	43279	41782	41877
Palghat	11342	16166	22644	21754	15415	19925	19197	23950	23681	23663	20247	18953	18563	18859	19069
Malappuram	3373	12794	13150	12852	13040
Kozhikode	47073	54483	58189	65015	60880	60377	60404	60242	62200	59408	50104	49713	50243	51625	48886
Cannanore	21858	24931	27620	27547	29304	29177	29564	30506	31083	34329	37101	41491	40533	42748	45127
Kerala	338773	355852	381606	417542	443810	448895	423501	434887	434467	409562	386434	416614	423185	409891	405440

Source: Directorate of Employment, Trivandrum.

TABLE 3.13

Employment in the public sector (Total) by Districts as on 31st March 1961-1975

District	1961	1962	1963	1964	1965	1966	1967	1968	1969	1970	1971	1972	1973	1974	1975
(1)	(2)	(3)	(4)	(5)	(6)	(7)	(8)	(9)	(10)	(11)	(12)	(13)	(14)	(15)	(16)
Trivandrum	38209	41567	42851	49263	48613	50669	51459	52937	56128	59571	63284	67724	71848	73259	75222
Quilon	22109	20865	20665	22294	23637	23994	25043	25259	26424	27003	32140	37961	43790	45892	46819
Alleppey	17115	18052	17475	17625	18463	18348	19468	20127	20621	21871	23867	27867	28449	29138	30145
Kottayam	15911	16588	17594	18807	18576	19071	17780	19034	20569	21090	21409	22083	18335	18897	18671
Idikki	5272	8831	9419
Ernakulam	25081	29063	34905	35448	41051	44417	43406	47578	50376	52853	55672	57958	55761	56797	57290
Trichur	17435	17330	17647	20647	19337	20864	20438	19525	20823	21714	23925	24851	25573	26911	26961
Palghat	32086	32446	34664	34855	35814	37432	34245	34232	35637	36268	34564	35425	35550	36218	37720
Malappuram	12589	13301	15023	15951	17552
Kozhikode	20556	22552	26243	28444	29941	30277	31871	33225	32961	34061	28071	28999	29223	30351	31151
Cannanore	10539	12764	13800	14071	14897	15440	16028	15993	17311	18881	19311	20939	23469	24664	24740
Kerala	199041	211217	225844	241404	250329	260512	260666	267910	280850	293318	315332	337108	352293	366899	375690

Source: Directorate of Employment, Trivandrum.

TABLE 3.14

Employment in the public sector (Central Government) by Districts as on 31st March 1961-1975

District	1961	1962	1963	1964	1965	1966	1967	1968	1969	1970	1971	1972	1973	1974	1975
(1)	(2)	(3)	(4)	(5)	(6)	(7)	(8)	(9)	(10)	(11)	(12)	(13)	(14)	(15)	(16)
Trivandrum	2712	3477	3851	3913	3707	4230	4491	4548	4664	5118	6025	5620	7639	7794	7847
Quilon	1032	911	978	1003	1100	1193	1273	727	805	727	720	776	829	962	981
Alleppey	161	162	228	202	188	152	142	496	492	879	1672	1649	1662	1694	1699
Kottayam	756	837	869	824	763	795	800	838	1874	1982	1994	2143	2276	1590	1684
Idikki	573	764
Ernakulam	6442	6805	7218	7758	6321	6909	7503	8666	8868	9107	9784	10369	10468	10387	10679
Trichur	2461	2069	2329	3447	2708	3065	2629	2800	2989	3116	3312	3403	3586	2750	2851
Palghat	16084	15663	17705	18244	18176	18292	18556	18445	18567	18708	18753	18540	18730	18790	18966
Malappuram	1168	1174	1239
Kozhikode	1979	2392	3620	3829	4083	4260	4548	4749	4936	4293	4485	3850	3912	3992	4171
Cannanore	218	1555	1693	1758	1844	1868	1900	1914	1958	2078	2140	2115	2003	2022	2108
Kerala	31845	33871	38491	40978	38890	40764	41842	43183	45153	46008	48885	48465	52268	51728	52989

Source: Directorate of Employment, Trivandrum.

TABLE 3.15

Employment in the public sector (State Government) by Districts as on 31st March 1961-1975

District	1961	1962	1963	1964	1965	1966	1967	1968	1969	1970	1971	1972	1973	1974	1975
(1)	(2)	(3)	(4)	(5)	(6)	(7)	(8)	(9)	(10)	(11)	(12)	(13)	(14)	(15)	(16)
Trivandrum	30092	32782	33484	38882	37606	35831	31871	34994	36006	37062	38442	40123	40437	40411	41396
Quilon	15233	15775	16345	16774	16648	16503	16905	17412	17857	18275	18761	19166	19428	19799	20324
Alleppey	18635	14723	13864	14017	14885	14743	15332	15570	16209	16638	17191	17288	17660	17648	18312
Kottayam	11879	12480	13343	14463	14319	13995	13756	13114	13313	13320	13695	13881	11685	12276	11938
Idikki	2787	4428	4950
Ernakulam	13142	15033	18176	18176	18261	18536	18244	19105	19419	19899	20714	20672	20024	20284	20493
Trichur	12365	12571	12284	14186	13332	14105	14402	13264	14210	14406	15254	15601	15844	16409	15985
Palghat	14977	15464	15221	14946	15893	17265	13625	13803	14794	14637	13248	14226	14383	14778	15302
Malappuram	11285	11889	12333	12832	14334
Kozhikode	16391	17727	19452	21137	22185	21813	22881	23285	22736	23828	18138	19542	19101	19731	19997
Cannanore	9006	9883	10209	11027	11222	11642	12288	12126	13239	14313	14865	15643	16411	17274	17034
Kerala	136720	146438	152378	163608	164351	164433	162304	162673	167783	172438	181693	188031	190093	193870	200065

Source: Directorate of Employment, Trivandrum.

TABLE 3.16

Employment in the public sector (Local bodies) by Districts as on 31st March 1961-1975

District	1961	1962	1963	1964	1965	1966	1967	1968	1969	1970	1971	1972	1973	1974	1975
(1)	(2)	(3)	(4)	(5)	(6)	(7)	(8)	(9)	(10)	(11)	(12)	(13)	(14)	(15)	(16)
Trivandrum	1732	1675	1612	1899	2101	2143	3348	3384	4498	5584	6163	7226	7759	8263	8344
Quilon	1708	652	967	919	865	963	1061	1064	1212	1317	1450	1512	1597	1661	1689
Alleppey	919	922	912	928	925	983	995	1045	1135	1170	1190	1225	1267	1314	1331
Koottayam	709	716	806	787	855	904	1005	1050	1144	1195	1219	1247	817	973	997
Idikki	501	533	536
Ernakulam	732	1420	1434	1434	1744	1809	1914	1953	1930	2124	2158	2182	2069	2157	2147
Trichur	1145	1087	1089	1069	1033	1038	1090	1087	1137	1171	1248	1279	1296	1384	1401
Palghat	328	932	1146	1072	1108	1113	1138	1093	1117	1145	1010	1027	1031	1096	1431
Malappuram	432	440	495	568	600
Kozhikode	1212	1354	1744	1686	1743	1800	1849	1955	1990	2066	1765	2172	2256	2352	2388
Cannanore	516	522	1198	589	1114	1144	1136	1168	1183	1187	1232	1228	1293	1362	1355
Kerala	9071	9330	10908	10383	11488	11897	13536	13799	15346	16959	17867	19333	20331	21663	22219

Source: Directorate of Employment, Trivandrum.

TABLE 3-17

Employment in the public sector (Quasi Government) by Districts as on 31st March
1961-1975

District	1961	1962	1963	1964	1965	1966	1967	1968	1969	1970	1971	1972	1973	1974	1975
(1)	(2)	(3)	(4)	(5)	(6)	(7)	(8)	(9)	(10)	(11)	(12)	(13)	(14)	(15)	(16)
Trivandrum	3673	3623	3504	4569	5199	8465	8749	10011	10960	11807	12654	14755	15913	16544	17724
Quilon	4136	3527	2375	3598	5024	5335	5804	6056	6550	6690	11318	15766	20988	23357	23825
Alleppey	2400	2245	2471	2478	2465	2470	2999	3016	2785	3189	3813	7353	7927	8482	8803
Kottayam	2567	2555	2576	2733	2639	3377	3147	4032	4238	4593	4293	4812	3758	4058	4052
Idikki	1984	3300	3169
Ernakulam	4765	5805	8080	8080	14725	17163	15745	17854	20159	21723	23016	24735	23605	23975	23971
Trichur	1464	1603	1945	1945	2264	2656	2317	2374	2487	2031	4111	4570	4847	6469	6724
Palghat	627	337	589	593	637	762	926	891	1159	1544	1553	1632	1583	1794	1913
Malappuram	872	972	1230	1377	1379
Kozhikode	947	1079	1427	1792	1930	2404	2593	3236	3299	4053	3683	3435	3954	4276	4595
Cannanore	779	804	700	647	717	786	704	785	931	1303	1574	3044	3762	4006	4262
Kerala	21405	21578	24067	26435	35600	43418	42984	48255	52568	56913	66887	81074	89551	97638	100417

Source: Directorate of Employment, Trivandrum.

TABLE 3-18

Employment in public sector in Kerala by different branches

<i>Date of reference</i>	<i>Central Government</i>	<i>State Government</i>	<i>Quasi Government</i>	<i>Local Bodies</i>	<i>Total</i>
(1)	(2)	(3)	(4)	(5)	(6)
31-3-1961	31845	136720	21405	9071	199041
30-6-1961	31819	138886	21549	9505	201759
30-9-1961	31160	128336*	20963*	6396*	186855
31-12-1961	33572	149586	23156	8782	215096
31-3-1962	33872	146438	21578	9330	211217
30-6-1962	34631	148045	22319	10586	215581
30-9-1962	36589	150992	21958	10966	220505
31-12-1962	37093	157341	22556	11261	228251
31-3-1963	38491	152378	24067	10908	225844
30-6-1963	38242	157612	23982	11035	230871
30-9-1963	38932	160300	26818	1115	237165
31-12-1963	40154	161998	26665	9727	238544
31-3-1964	40378	163608	26435	10383	241404
30-6-1964	37938	161252	30580	10520	240290
30-9-1964	37910	161907	34402	10572	244791
31-12-1964	37948	165694	35238	10758	249638
31-3-1965	38890	164351	35600	11488	250329
30-6-1965	39188	160577	43153	11463	254381
30-9-1965	39688	162951	43561	11671	257871
31-12-1965	40494	165128	44425	11845	261892
31-3-1966	40764	164433	43418	11897	260512
30-6-1966	40923	158041	41572	13173	253709
30-9-1966	41479	161469	42450	13281	258679
31-12-1966	41944	161580	44218	13579	261321
31-3-1967	41842	162304	42984	13536	260666
30-6-1967	41994	160816	46329	13550	262689
30-9-1967	42370	162762	45837	13734	264703
31-12-1967	42736	162884	47060	13686	266366
31-3-1968	43183	162673	48255	13799	267910
30-6-1968	42986	162499	50702	13990	270177
30-9-1968	44713	162274	51440	14153	272580
31-12-1968	44689	167776	51736	15274	279475
31-3-1969	45153	167783	52568	15346	280850
30-6-1969	45587	168638	53690	15771	283686
30-9-1969	45840	171112	55390	16249	288591
31-12-1969	46046	171443	56863	16730	291082
31-3-1970	46008	172438	56913	16959	293318

TABLE 3.18 (cont.)

<i>Date of reference</i>	<i>Central Government</i>	<i>State Government</i>	<i>Quasi Government</i>	<i>Local Bodies</i>	<i>Total</i>
(1)	(2)	(3)	(4)	(5)	(6)
30-6-1970	47180	174266	61204	17077	299727
30-9-1970	47963	178782	63553	17197	307495
31-12-1970	48306	180948	64366	17598	311218
31-3-1971	48885	181693	66887	17867	315332
30-6-1971	49634	182646	69509	18137	319926
30-9-1971	49339	184115	75999	18626	328079
31-12-1971	50030	186837	77561	18819	333247
31-3-1972	48465	183031	81074	19538	337108
30-6-1972	48772	187838	81695	19840	338145
30-9-1972	50802	188127	86162	20221	345312
31-12-1972	51390	189214	89262	20204	350070
31-3-1973	52263	190093	89551	20381	352293
30-6-1973	52138	191223	93387	20910	357658
30-9-1973	52176	193631	95330	21320	362457
31-12-1973	51732	196088	96156	21469	365445
31-3-1974	51728	195870	97638	21663	366899
30-6-1974	52038	196124	98241	21729	368132
30-9-1974	52585	197965	99447	21901	371898
31-12-1974	52730	200600	100462	22151	375943
31-3-1975	52989	200065	100417	22219	375690
30-6-1975	53143	200066	101011	22555	376775

* In these figures the estimated employment is not added for lack of information.

Source: Directorate of Employment, Trivandrum.

TABLE 3.19
Employment in various organised industries in Kerala
1971

Sl. No.	Code	Name of Industries	All employees		
			Census	Sample	Total
(1)	(2)	(3)	(4)	(5)	(6)
1	203	Canning and preservation of fruits and vegetables	641	80	721
2	204	Canning and preservation of fish and other sea foods	2390	585	2975
3	205	Manufacture of grain mill products	158	1177	1335
4	207	Sugar factories and refineries	1092	..	1092
5	209	Manufacture of miscellaneous food preparations	92270	9288	101558
6	211	Distilling and rectifying of spirits	73	21	94
7	220	Tobacco manufactures	31	600	631
8	231	Spinning and weaving of textiles	14620	2746	17366
9	232	Knitting mills	260	..	260
10	239	Manufacture of other textiles	2241	2670	4911
11	243	Manufacture of wearing apparatus except footwear	71	450	521
12	251	Saw mills and other wood mills	5898	4774	10672
13	260	Manufacture of furniture and fixtures	1173	1304	2477
14	271	Manufacture of paper and paper products	1108	256	1364
15	280	Printing and publishing industries	5587	1477	7064
16	300	Manufacture of rubber products	3344	897	4241
17	311	Basic industrial chemicals	8653	775	9428
18	319	Miscellaneous chemical products	2138	1209	3347
19	331	Manufacture of structural clay products	9344	2848	12192
20	333	Manufacture of pottery and earthenware	851	588	1439
21	341	Iron and steel basic industries	913	277	1190
22	350	Manufacture of metal products	859	1208	2067
23	360	Manufacture of machinery except electrical	3265	1175	4440
24	370	Manufacture of electrical machinery	2840	233	3073
25	381	Manufacture of transport equipment	1477	126	1603
26	384	Repair of motor vehicles	2526	1280	3806
27	385	Manufacture of motor cycles and bicycles	178	73	251
28	391	Miscellaneous manufacturing industries	700	..	700
29	399	Manufacturing industries not elsewhere classified	247	143	390
30	511	Electrical light and power	19162	..	19162
31	521	Water and sanitary services	..	164	164
32		Other Industries	2723	197	2920
State total			186833	36621	223454

Source: Annual Survey of Industries 1971 (Census and Sample)

TABLE 3.20

Number of persons employed in organised industries in Kerala and India 1962 to 1970

<i>Year</i>	<i>Kerala</i>	<i>India</i>
(1)	(2)	(3)
1962	137013	3267433
1963	141271	3445432
1964	145494	3797657
1965	156720	3984734
1966	162141	3946632
1967	158150	3932371
1968	154823	3950081
1969	171678	4151025
1970	164565	4259945

Source: Annual Survey of Industries (Census sector)



SECTION 4

UNEMPLOYMENT AND UNDER EMPLOYMENT

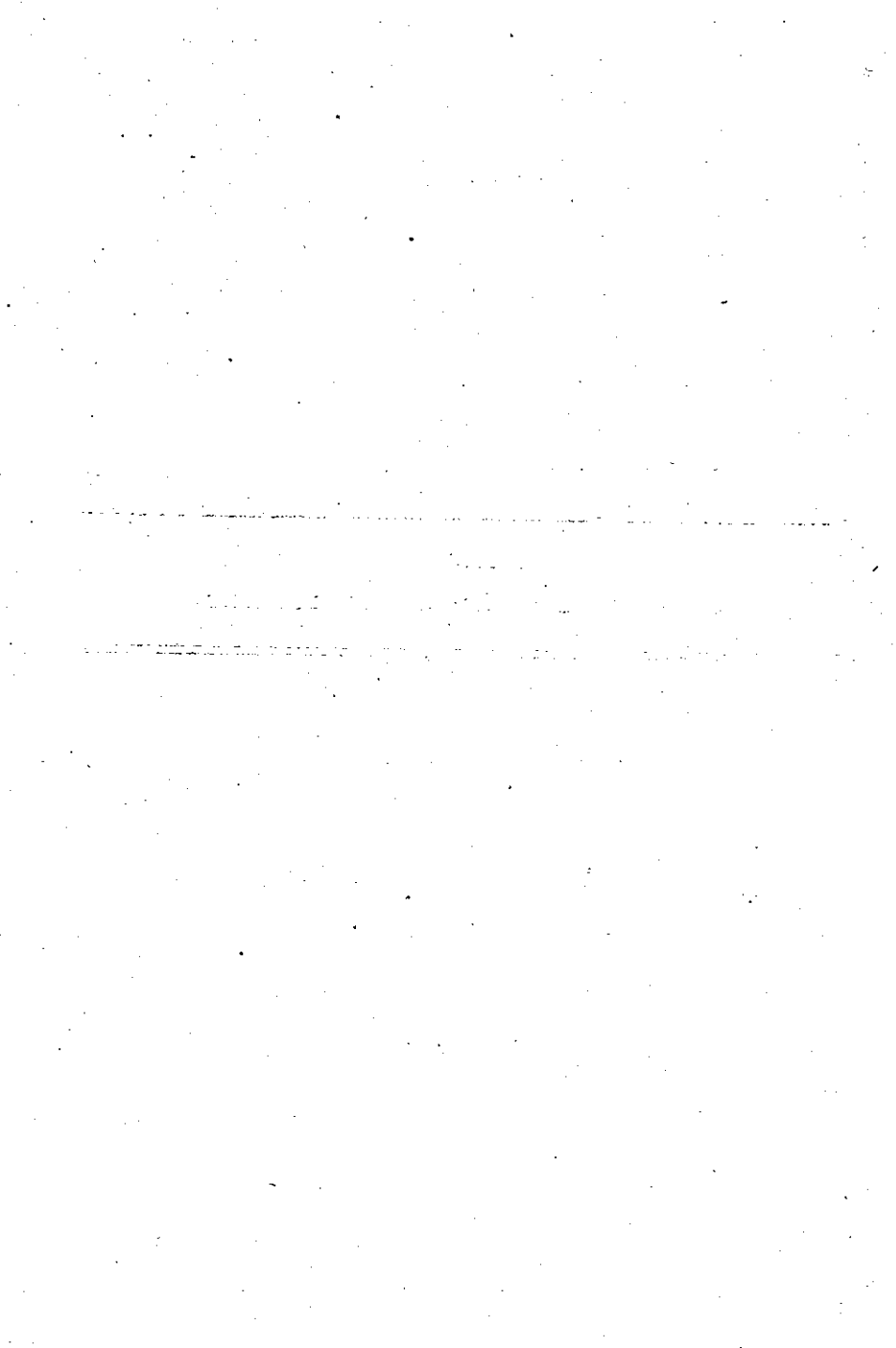


TABLE 4.1
Number of applicants on Live Register of Employment Exchange in Kerala 1960 to 1974

Year	(2) No. of exchanges of the end of the period	(3) Average monthly No. of employers using the exchange	(4) No. of vacancies notified during the period	(5) No. of registration during the period	(6) No. of placements effected during the period	(7) No. of applicants on Live Registers at the end of the period
31-12-1960	9	198	NA	105775	11631	151469
31-12-1961	9	238	22089	105885	14526	140809
31-12-1962	9	323	25580	151883	18822	201810
31-12-1963	9	366	20112	141878	18187	128544
31-12-1964	9	337	20210	147399	14024	140523
31-12-1965	9	434	24744	140350	18378	140592
31-12-1966	9	464	24941	137030	16904	157156
31-12-1967	9	506	22768	154918	15617	179479
31-12-1968	9	492	22324	161609	15658	201876
31-12-1969	9	526	24255	168162	17864	239586
31-12-1970	10	563	24654	210872	17939	293754
31-12-1971	10	563	21805	203208	16537	367381
31-3-1972	11	492	23530	222148	17450	375901
31-3-1973	12	356	19566	225854	11408	466130
31-3-1974	13	513	24400	253159	16016	548783

Source: Directorate of Employment, Trivandrum.

TABLE 4.2
Occupational distribution of applicants on Live Register of Employment Exchanges in Kerala
1960-1974

Period ending	(2) Professional, Technical and related workers	(3) Administrative, executive & managerial workers	(4) Clerical related workers	(5) Sales workers	(6) Farmers fishermen & related workers	(7) Miners & quarrymen & related workers	(8) Workers in transport communication occupation	(9) Craftsmen production process workers labourers N.E.C.	(10) Service sports recreation workers	(11) Workers elsewhere classified by occupation	(12) Total
30-9-1960	10358	187	7439	69	1515	149	2936	29717	8626	90392	151388
30-9-1961	11100	164	10754	42	1473	100	3070	21476	8054	93889	150062
31-12-1962	15319	283	13673	58	1836	133	5368	23466	11218	130456	201810
31-12-1963	9974	173	3970	17	682	41	3549	11061	6160	92917	128544
31-12-1964	14227	315	12072	22	1358	68	3468	10239	7632	89922	140523
31-12-1965	16342	405	11415	35	1858	32	4176	11028	8180	87111	140592
31-12-1966	17178	486	10562	25	1716	9	4702	11705	8821	101952	157156
31-12-1967	23177	759	13500	28	1636	12	6988	15293	10999	107087	179479
31-12-1968	24891	829	16839	44	1540	19	8434	17839	12930	118511	201876
31-12-1969	29040	955	19877	70	1971	194	9139	18872	14077	145391	239586
31-12-1970	30593	1319	22682	79	1581	24	9846	25654	14899	187077	293754
31-12-1971	31451	1353	31675	115	1727	34	9688	31668	25056	234614	367381
31-3-1972*	25.1	1.1	31.2	0.1	2.1	0.04	11.8	22.9	2.0	245.6	377.9
31-3-1973*	33.3	1.7	34.9	0.1	2.1	0.2	14.7	23.7	2.9	314.8	466.1
31-3-1974*	34.2	1.9	35.8	0.2	2.0	0.8	15.1	22.1	9.0	386.6	548.8

Source: Directorate of Employment, Trivandrum.

* Figures are in thousand.

TABLE 4.3
Number of seekers in each District of Kerala 1961 to 1974 (Number as on 31st December)

District	1961	1962	1963	1964	1965	1966	1967	1968	1969	1970	1971	1972	1973	1974
(1)	(2)	(3)	(4)	(5)	(6)	(7)	(8)	(9)	(10)	(11)	(12)	(13)	(14)	(15)
Trivandrum	31578	38126	30247	36980	35905	38768	46125	52513	55592	70778	92112	102253	119318	120503
Quilon	16779	22249	17176	17830	17478	19338	22570	26229	28692	36450	40134	45896	55269	60714
Alleppey	14783	25171	12642	12501	12338	12948	15410	19193	23430	25638	26396	31141	39707	42659
Kottayam	11978	14124	10520	12752	12794	13070	13336	15406	19620	24260	28632	33285	10690	11305
Idikki	6825	44288
Ernakulam	28867	41762	19479	20381	20143	23313	27465	27491	32604	47608	65443	87889	94981	105684
Trichur	8568	12850	9540	9994	10873	12000	13352	12969	16896	18323	24829	34943	40148	50464
Palghat	6814	13874	6994	6609	6751	9001	9414	10191	12481	13245	16384	18129	21223	28346
Malappuram	11847	14611	19242	17574	22215
Kozhikode	13377	17976	14824	15828	16519	19513	21091	23699	35027	25316	31829	38108	44963	52248
Cannanore	8065	15678	7122	7648	7791	9205	10716	14185	15304	20289	27011	36203	35721	43256
Kerala	140809	201810	128544	140523	140592	157156	179479	201876	239586	293754	367381	453914	523882	587935

Source: Directorate of Employment, Trivandrum

Note.—Malappuram District formed by delimiting the districts Palghat and Kozhikode and Idikki by delimiting Ernakulam and Kottayam Districts.

TABLE 4.4
Number of educated work seekers in Kerala 1966 to 1975

Period	Educational level				Total
	S.S.L.C.	Pre-degree	Graduate	Post-graduate and above	
(1)	(2)	(3)	(4)	(5)	(6)
30-6-1966	73497	2653	3167	637	79954
31-12-1966	79261	2923	3581	445	86210
30-6-1967	89762	3111	4052	510	97435
31-12-1967	83616	3558	4822	631	92627
30-6-1968	93525	4001	5359	594	103479
31-12-1968	89487	3893	6615	832	109827
30-6-1969	112809	4577	6989	772	125247
31-12-1969	124469	6275	11002	1687	143433
30-6-1970	133070	6141	11351	1712	152274
31-12-1970	151279	7469	17708	1994	178450
30-6-1971	161015	9706	18506	2119	191346
31-12-1971	167814	10168	20841	2253	201076
31-12-1972	218880	16457	26454	3333	265124
30-6-1973	210289	16269	27640	2742	256940
31-12-1973	226783	18695	34327	4156	283961
30-6-1974	235061	18334	35445	3720	292560
31-12-1974	252423	20075	36947	3870	313315
30-6-1975	268312	25801	41829	5063	341005

Source: Directorate of Employment, Trivandrum.

TABLE 4.5
Unemployed persons in Kerala as percentage of labour force by District 1965

District*	Unemployed as percentage of labour force		
	Male	Female	Persons
(1)	(2)	(3)	(4)
Trivandrum	10.32	24.76	14.73
Quilon	7.11	17.93	10.14
Alleppey	8.53	14.11	10.41
Kottayam	5.69	9.97	6.80
Ernakulam	7.07	12.07	8.35
Trichur	8.22	18.31	11.98
Palghat	5.40	9.47	6.98
Kozhikode	8.41	10.91	8.96
Cannanore	3.01	3.73	3.17

*Malappuram and Idikki not formed.

Source: Survey of employment and unemployment, Kerala 1965.

TABLE 4.6

Percentage distribution of unemployed persons in Kerala by sex and age-group 1965

Age-group (years)	Male	Female	Persons
(1)	(2)	(3)	(4)
15—19	35.17	34.03	34.67
20—24	31.13	30.08	30.66
25—29	13.00	11.19	12.20
30—34	6.22	7.09	6.60
35—39	4.29	6.43	5.24
40—59	10.06	11.10	10.53
Wrong entries	0.13	0.08	0.10
Total	100.00	100.00	100.00

Source: Survey of employment and unemployment, Kerala 1965.

TABLE 4.7

Distribution of unemployed persons in Kerala by general education and sex—1965

General education	No. unemployed			Percentage distribution		
	Male	Female	Persons	Male	Female	Persons
(1)	(2)	(3)	(4)	(5)	(6)	(7)
Illiterate	31330	66430	97760	10.30	27.38	17.88
Literate below middle	131350	79810	211160	43.17	32.89	38.61
Middle below matric	59350	33800	93150	19.51	13.93	17.03
Matric	77440	60160	137600	25.45	24.79	25.16
Graduate	4610	1890	6500	1.52	0.78	1.19
Post-graduate	160	560	720	0.05	0.23	0.13
Total	304240	242650	546890	100.00	100.00	100.00

Source: Survey of employment and unemployment 1965.

TABLE 4.8

Distribution of unemployed persons by general education and duration of unemployment 1965

General education	Duration of unemployment	
	Up to one year	One year or more
(1)	(2)	(3)
Below middle	214600	94320
Middle below matric	40230	52920
Matric	59390	78210
Graduate	3600	2900
Post-graduate	720	..
Total	318540	228350

Source: Survey of employment and unemployment 1965.

TABLE 4.9

Percentage distribution of unemployed persons according to duration of unemployment (urban) July 1960—June 1961

Duration of unemployment (in months)	Male	Female	Persons
(1)	(2)	(3)	(4)
0 (less than one month)	11.44	11.66	11.50
1	8.48	15.22	10.16
2	5.53	9.48	6.52
3—5	6.91	5.53	6.56
6—11	14.74	13.83	14.51
12—23	23.42	19.37	22.41
24 and above	29.48	24.91	28.34
Total unemployed	100.00	100.00	100.00

Source: 16th round of N.S.S.

TABLE 4.10

Percentage distribution of employed persons by hours at work during the reference week—1965

Weekly hours at work	Employed		
	Male	Female	Persons
(1)	(2)	(3)	(4)
0—14	9.87	15.21	11.33
15—28	16.48	21.71	17.91
29—42	25.16	26.29	25.47
43—56	29.85	26.09	28.82
57 and above	18.64	10.70	16.47
Total	100.00	100.00	100.00

Source: Survey of employment and unemployment, Kerala, 1965.

TABLE 4.11

Percentage distribution of employed persons reporting available for additional work in each weekly hours at work—1965

Weekly hours at work	Number in lakhs			Persons available for work as percentage of total employed		
	Male	Female	Persons	Male	Female	Persons
(1)	(2)	(3)	(4)	(5)	(6)	(7)
0—14	1.30	0.54	1.84	3.27	3.64	3.37
15—28	3.50	1.64	5.14	8.82	11.00	9.42
29—42	4.95	1.85	6.80	12.44	12.37	12.41
43—56	2.02	0.61	2.63	5.09	4.05	4.81
57 and above	0.61	0.10	0.71	1.54	0.68	1.31
Total	12.38	4.74	17.12	31.16	31.74	31.32

Source: Survey of employment and unemployment, Kerala, 1965.

TABLE 4.12

Percentage distribution of gainfully employed persons during the week by hours at work and availability for additional work (Urban) July 1958—June 1959

<i>Hours of work during the week</i>	<i>Percentage distribution of employed persons</i>	<i>Percentage of employed reporting availability for additional work</i>	<i>Percentage of total employed reporting availability for additional work</i>
(1)	(2)	(3)	(4)
0	7.87	13.08	1.03
1-14	5.93	51.36	3.05
15-28	14.25	56.42	8.03
29-42	21.02	39.80	8.37
43-56	27.49	20.44	5.62
57 and above	23.44	4.59	1.08
Total	100.00	27.18	27.18

Source: 14th Round of N.S.S.

TABLE 4.13

Percentage distribution of working persons by weekly hours at work and availability for additional work (Rural) July 1960—June 1961

<i>Weekly hours of work</i>	<i>Male</i>		<i>Female</i>		<i>Persons</i>	
	<i>Percentage of persons</i>	<i>Percentage reporting available for additional work</i>	<i>Percentage of persons</i>	<i>Percentage reporting available for additional work</i>	<i>Percentage of persons</i>	<i>Percentage reporting available for additional work</i>
(1)	(2)	(3)	(4)	(5)	(6)	(7)
0	7.09	16.67	8.95	6.17	7.60	13.25
1-14	6.28	69.80	7.51	45.59	6.62	62.21
15-28	16.58	50.73	16.02	38.62	16.42	47.02
29-42	27.20	31.47	27.29	26.72	27.23	30.15
43-56	26.95	18.94	33.71	9.51	28.82	15.89
57 and above	15.90	7.69	6.52	3.39	13.31	7.11
Total	100.00	28.75	100.00	20.88	100.00	26.59

Source: 16th Round of N.S.S.

SECTION 5

**EDUCATED MAN POWER—GENERAL EDUCATION AND
TEACHERS' TRAINING**



TABLE 5.1

Percentage of literates in Kerala and districts 1901 to 1971

Districts	1901	1911	1921	1931	1951	1961	1971
(1)	(2)	(3)	(4)	(5)	(6)	(7)	(8)
Cannanore	11.12	14.09	15.58	19.47	40.15	48.45	54.84
Kozhikode	11.25	12.53	14.20	16.09	33.65	47.83	57.23
Malappuram	47.90
Palghat	9.54	12.03	13.74	15.19	30.18	39.89	46.69
Trichur	13.76	17.74	21.32	32.85	48.24	57.15	61.61
Ernakulam	14.21	15.56	24.06	29.98	54.12	59.53	65.29
Kottayam	19.03	21.80	33.20	36.29	62.66	66.64	67.92
Alleppey	17.36	19.99	33.04	35.73	61.94	66.07	70.44
Quilon	10.62	13.51	25.34	26.08	53.38	59.74	64.97
Trivandrum	13.21	16.70	27.07	26.05	49.90	53.43	62.54
State	12.85	15.45	21.95	25.58	47.37	55.08	60.42

Source: 1. Census of India, 1961—Volume VII—General report Part I-A(i).

2. Census—Final Population Totals 1971.

Note. 1. 1901 to 1961—Population in the age group (0.4) is excluded for calculating literacy rate.

2. 1971—Population in the age group (0.4) is included for calculating literary rate.

3. The figures for 1941 census are not available.

4. Idikkı district was not formed in the 1971 census period and the details are not separately worked out.

TABLE 5.2

Percentage of literates in Kerala and in other States 1961 and 1971

State	Percentage of literates	
	1961	1971
(1)	(2)	(3)
Andhra Pradesh	21.2	24.56
Assam	27.4	29.81
Bihar	18.4	19.79
Gujarat	30.5	35.72
Haryana	N.A.	26.69
Himachal Pradesh	N.A.	31.32
Jammu and Kashmir	11.0	18.30
Kerala	48.8	60.42
Madhya Pradesh	17.1	22.12
Maharashtra	29.8	39.08
Mysore	26.4	31.54
Nagaland	N.A.	27.33
Orissa	21.7	26.12
Punjab	24.2	33.39
Rajasthan	15.2	18.79
Thamil Nadu	31.4	39.39
Uttar Pradesh	17.6	21.64
West Bengal	29.3	33.05
India	24.2	29.32

Source: Census records.

TABLE 5.3

Distribution of Schools in Kerala by type and districts 1974-75

Revenue District	High School			U. P. School			L. P. School			
	All types	Government	Private	Total	Government	Private	Total	Government	Private	Total
(1)	(2)	(3)	(4)	(5)	(6)	(7)	(8)	(9)	(10)	(11)
Trivandrum	875	70	73	143	95	103	198	358	176	534
Quilon	1161	65	120	185	86	184	270	418	288	706
Alleppey	1054	41	141	182	97	132	229	289	354	643
Kottayam	879	32	127	159	62	139	201	210	309	519
Idikki	326	21	33	54	37	39	76	96	100	196
Ernakulam	911	50	139	189	82	118	200	238	284	522
Trichur	946	53	110	163	50	172	222	142	419	561
Palghat	856	41	54	95	56	159	215	192	354	546
Malappuram	1158	61	30	91	101	133	234	387	446	833
Kozhikode	1312	51	61	112	93	229	322	288	590	878
Cannanore	1705	66	64	130	145	327	472	346	757	1103
Total Kerala	11183	551	952	1503	904	1735	2639	2964	4077	7041

Source: Director of Public Instruction.

TABLE 5.4
**Progress of Primary and Secondary Educational Institutions in Kerala
 1956-57 to 1974-75**

Year	All types Total	High Schools			U. P. Schools			L. P. Schools		
		Government	Private	Total	Government	Private	Total	Government	Private	Total
(1)	(2)	(3)	(4)	(5)	(6)	(7)	(8)	(9)	(10)	(11)
1956-57	9510	140	623	763	259	1406	1665	1644	5438	7082
1960-61	9533	244	651	895	530	1402	1932	2719	3987	6706
1965-66	10552	345	806	1151	761	1686	2447	2904	4050	6954
1966-67	10688	391	884	1275	778	1697	2475	2201	4072	6938
1967-68	10701	304	883	1282	782	1697	2479	2864	4076	6940
1968-69	10833	440	941	1381	797	1783	2535	2805	4112	6917
1969-70	10842	441	941	1382	797	1735	2532	2805	4123	6928
1970-71	10322	442	942	1384	809	1734	2543	2804	4091	6895
1971-72	10839	446	947	1393	811	1740	2551	2804	4091	6895
1972-73	10836	448	951	1399	811	1739	2550	2798	4089	6887
1973-74	10856	452	952	1404	809	1739	2548	2807	4097	6904
1974-75	11183	551	952	1503	904	1735	2639	2964	4077	7041

TABLE 5.5

Progress of enrolment in the different stages of school education 1956-57 to 1975-76

Year	No. of students in Primary stage	Index of growth	No. of students in Secondary stage	Index of growth	Total	Index of growth
1956-57	2492557	100	216714	100	2709271	100
1957-58	2594715	104	218988	101	2813703	104
1958-59	2817019	113	219607	101	3036626	112
1959-60	2784696	112	347826	160	3132522	116
1960-61	2939408	118	330893	153	3270301	121
1961-62	3041388	122	416363	192	3457752	128
1962-63	3131503	126	490564	226	3622067	134
1963-64	3424765	131	554819	256	3818436	141
1964-65	3263617	137	585336	270	4010101	149
1965-66	3552693	143	615143	284	4167836	151
1966-67	3688679	148	639959	295	4328638	160
1967-68	3784864	152	666773	308	4451637	165
1968-69	3912820	157	702384	324	4615204	170
1969-70	3989963	160	709290	327	4698653	173
1970-71	4074808	163	724724	334	4799532	177
1971-72	4229533	170	750198	346	4979731	184
1972-73	4375389	176	780886	360	5156275	190
1973-74	4404716	177	865861	399	5270577	195
1974-75	4423247	178	936042	432	5359289	198
1975-76	4377461	176	907896	419	5285357	195

Primary:

From 1956-57 to 1958-59 the primary section consisted of Standard I to VIII, from 1959-60 onwards primary stage consists of Standard I to VII. Hence the decrease in the year 1959-60 compared to the previous year.

Secondary:

From 1956-57 to 1958-59 secondary section consists of Standard IX to XI. During 1959-60 it was Standard VII to XI. Hence abnormal increase in strength of students. From 1960-61 onwards Standard VIII to X was the secondary stage and hence the decrease during 1960-61.

TABLE 5-6
Standard-wise strength of students 1975-76

Standards	Government		Private aided		Private unaided		Total	
	Boys	Girls	Boys	Girls	Boys	Girls	Boys	Girls
I	144322	133549	190999	179506	2999	2774	338320	315829
II	153747	141822	190003	178889	3051	2652	346801	323363
III	150001	137661	184816	172891	2812	2546	337629	313098
IV	163176	144526	199525	183742	2467	2341	365618	330609
Lower Primary section Total	611246	557558	763343	715028	11329	10313	1387918	1282899
V	141943	123783	223782	206842	2341	2205	373066	332830
VI	99036	85122	179108	160717	2208	2007	280352	247846
VII	85732	73030	163577	146538	1884	1889	251193	221457
Upper Primary section Total	326711	281935	571467	514097	6433	6101	904611	802193
VIII	84172	68710	132594	114892	2270	2310	219036	187912
IX	64011	54222	103506	95579	1813	1905	169330	151706
X	34092	29584	58450	55276	1246	1264	93788	86126
High School section Total	182275	152516	294550	267747	5329	5479	482154	425742
All sections Total	1129232	992009	1631360	1496782	23091	21893	2774683	2510774

Source: Director of Public Instruction.

TABLE 5-7

Distribution of students according to school management 1966-67 to 1974-75

Year	Total		High School		Primary	
	Government	Private	Government	Private	Government	Private
(1)	(2)	(3)	(4)	(5)	(6)	(7)
1966-67	1815976	2512662	227780	412179	1588196	2100483
1967-68	1822818	2628819	230937	434836	1591881	2193983
1968-69	1872579	2742625	241587	460797	1630992	2281828
1969-70	1911763	2786890	245593	463697	1666170	2323193
1970-71	1948645	2850887	250228	474496	1698417	2376391
1971-72	1987128	2992603	260199	489999	1726929	2502604
1972-73	2084368	3071907	267904	512982	1816464	2558925
1973-74	2109531	3161046	301590	564271	1807941	2596775
1974-75	2136486	3222803	351603	604439	1804883	2618364

Source: Director of Public Instruction.

TABLE 5-8

Percentage distribution of students according to school management 1966-67 to 1974-75

Year	Total		High School		Primary	
	Government	Private	Government	Private	Government	Private
(1)	(2)	(3)	(4)	(5)	(6)	(7)
1966-67	41.95	58.05	35.59	64.41	43.06	56.94
1967-68	40.95	59.05	34.69	65.31	42.05	57.95
1968-69	40.57	59.43	34.40	65.60	41.68	58.32
1969-70	40.69	59.31	34.63	65.37	41.77	58.23
1970-71	40.60	59.40	34.53	65.47	41.68	58.32
1971-72	39.90	60.10	34.68	65.32	40.83	59.17
1972-73	40.42	59.58	34.31	65.69	41.52	58.48
1973-74	40.02	59.98	34.83	65.17	41.45	58.55
1974-75	39.87	60.13	35.43	64.57	40.80	59.20

Source: Director of Public Instruction.

TABLE 5.9
Enrolment of students as percentage to total population
1960-61 to 1974-75

Year	Population in lakhs	Enrolment	Enrolments as percentage to total population
(1)	(2)	(3)	(4)
1960-61	169.04	3270301	19.35
1961-62	173.02	3457752	19.99
1962-63	177.02	3622067	20.45
1963-64	181.26	3818436	21.06
1964-65	185.52	4010101	21.61
1965-66	189.82	4157836	21.90
1966-67	194.35	4328632	22.27
1967-68	198.92	4452637	22.39
1968-69	203.48	4615204	22.68
1969-70	208.15	4698653	22.58
1970-71	213.47	4799532	22.48
1971-72	217.36	4979731	22.91
1972-73	222.35	5156275	23.19
1973-74	227.39	5270577	23.18
1974-75	232.45	5359289	23.06

Source: Director of Public Instruction.

TABLE 5.10
Number of students that passed S.S.L.C. Examination in Kerala
1961-62 to 1974-75

Year	Boys	Girls	Total
(1)	(2)	(3)	(4)
1961-62 (September & March)	37713	20863	58575
1962-63	47044	24542	71586
1963-64	50924	30103	81027
1964-65	54120	36711	90831
1965-66	52589	33934	88493
1966-67	55387	41117	96504
1967-68	49281	38685	87966
1968-69	51183	36985	87939
1969-70	53721	40060	93781
1970-71	50417	38591	89008
1971-72	48186	36720	84906
1972-73	34377	27767	62144
1973-74	29617	26734	56351
1974-75	59524	57739	117283
- Total	674083	492511	1166594

Source: Director of Public Instruction.

TABLE 5- 11
Wastage in school education 1963-64 to 1972-73 batch

<i>Year</i>	<i>Standard</i>	<i>No. of students</i>	<i>Index of failure and drop out</i>
(1)	(2)	(3)	(4)
1963-64	I	674731	1000
1964-65	II	613256	909
1965-66	III	574931	852
1966-67	IV	540723	801
1967-68	V	440757	653
1968-69	VI	376510	558
1969-70	VII	324819	481
1970-71	VIII	308697	458
1971-72	IX	265925	394
1972-73	X	156116	231
Passed S.S.L.C. April 1973		42467	63*

*Out of every 1000 students admitted in Standard I in 1963-64 only 63 came out successful by completing the course.

Source: Director of Public Instruction.

TABLE 5-12
Wastage in school education—Boys—1963-64 to 1972-73 batch

<i>Year</i>	<i>Standard</i>	<i>No. of boys</i>	<i>Index of failure or drop out</i>
(1)	(2)	(3)	(4)
1963-64	I	355084	1000
1964-65	II	325097	916
1965-66	III	307428	866
1966-67	IV	290483	818
1967-68	V	241921	681
1968-69	VI	206402	581
1969-70	VII	175722	495
1970-71	VIII	166237	468
1971-72	IX	142850	402
1972-73	X	83390	235
Passed S.S.L.C. April 1973		23628	67*

*Out of 1000 boys admitted in 1963-64 in Standard I only 67 passed completing the course.

Source: Director of Public Instruction.

TABLE 5.13
Wastage in school education—Girls—1963-64 to 1972-73

<i>Year</i>	<i>Standard</i>	<i>No. of girls</i>	<i>Index of failure and drop out</i>
(1)	(2)	(3)	(4)
1963-64	I	319547	1000
1964-65	II	288159	901
1965-66	III	267503	837
1966-67	IV	250240	783
1967-68	V	198836	622
1968-69	VI	170108	532
1969-70	VII	149097	466
1970-71	VIII	142460	446
1971-72	IX	123075	385
1972-73	X	72726	228
Passed S.S.L.C. April 1973		18839	59*

*Out of 1000 girls admitted in Standard I only 59 came out successful after completing the course.

Source: Director of Public Instruction.

TABLE 5.14
Number of students in basic training schools 1961-62 to 1974-75

<i>Year</i>	<i>No. of schools</i>	<i>Boys</i>	<i>Girls</i>	<i>Total</i>
(1)	(2)	(3)	(4)	(5)
1961-62	80	3830	3205	7035
1962-63	80	4404	3999	8403
1963-64	105	4910	5819	10728
1964-65	105	5200	7557	12757
1965-66	105	5222	8630	13852
1966-67	105	5288	9238	14526
1967-68	105	4623	8865	13485
1968-69	105	3523	7064	10587
1969-70	105	2660	4255	6915
1970-71	105	1747	2459	4206
1971-72	105	1239	907	2145
1972-73	105	N.A.	N.A.	1720
1973-74	105	N.A.	N.A.	1720
1974-75	105			No selection

No admission during 1971-72. During 1972-73 admission was confined to twelve Government Basic Training schools and in private training schools admission was restricted for only 20 candidates per institution. Admission discontinued since 1973-74.

Source: Director of Public Instruction.

TABLE 5-15
 Outturn of T.T.C. holders 1961-62 to 1973-74

<i>Year</i>	<i>Boys</i>	<i>Girls</i>	<i>Total</i>
(1)	(2)	(3)	(4)
1961-62 (September & March)	2096	1529	3625
1962-63	2687	1724	4411
1963-64	2530	2415	4945
1964-65	2270	2702	4972
1965-66	2263	3535	5798
1966-67	1858	2607	4465
1967-68	2953	3935	6888
1968-69	2754	3674	6428
1969-70	2072	2259	4331
1970-71	2580	4046	6626
1971-72	1099	1309	2408
1972-73	1027	1547	2574
1973-74	649	942	1591
Total	26838	32224	59062

Source: Director of Public Instruction.

TABLE 5-16
 Stock of Teachers—Section-wise 1960-61 to 1974-75

<i>Year</i>	<i>High School section</i>	<i>Upper Primary section</i>	<i>Lower Primary section</i>	<i>Total</i>
(1)	(2)	(3)	(4)	(5)
1960-61	13675	33027	62155	108867
1961-62	15901	35084	63996	114981
1962-63	19679	32739	63540	115958
1963-64	19929	35081	62131	117141
1964-65	21192	36244	63862	121298
1965-66	22496	37756	64570	124822
1966-67	24334	38886	66028	129248
1967-68	25036	40452	67424	132912
1968-69	25692	41696	68054	135442
1969-70	26392	43065	68813	138270
1970-71	28471	44140	69694	142305
1971-72	29470	44731	72233	146134
1972-73	30723	45495	74550	150768
1973-74	31376	47392	73621	152389
1974-75	32816	49173	76275	158264

Source: Director of Public Instruction.

TABLE 5-17
 Stock of trained and untrained teachers—Sections-wise-1974-75

Section	Trained			Untrained			Total		
	Men (2)	Women (3)	Total (4)	Men (5)	Women (6)	Total (7)	Men (8)	Women (9)	Total (10)
(1)									
High School section—Total	18217	14223	32440	183	193	376	18400	14416	32816
Regular teachers	16809	13244	30053	71	52	123	16880	13296	30176
Special teachers	1408	979	2387	112	141	253	1520	1120	2640
Upper Primary section—Total	23995	22194	46189	1423	1561	2984	25418	23755	49173
Regular teachers	20731	19562	40293	966	1086	2052	21697	20648	42345
Special teachers	3264	2632	5896	457	475	932	3721	3107	6828
Lower Primary section—Total	35723	38424	74147	1355	773	2128	37078	39197	76275
Regular teachers	35507	36120	71627	1312	316	1628	36819	36436	73255
Special teachers	216	2304	2520	43	457	500	259	2761	3020
Training School section—Total	308	208	516	308	208	516
Regular teachers	291	191	482	291	191	482
Special teachers	17	17	34	17	17	34
ALL SECTIONS	78243	75049	153292	2961	2527	5488	81204	77576	158780

Source: Director of Public Instruction.

TABLE 5-18

List of Teachers' Training Colleges in Kerala with sanctioned intake capacity 1974-75

Name of Training College		District which located	Sanctioned intake
(1)		(2)	(3)
<i>A. Government</i>			
1.	Government Training College, Trivandrum	Trivandrum	150
2.	" " Trichur	Trichur	120
3.	" " Calicut	Calicut	100
4.	" " Tellicherry	Cannanore	100
<i>B. Private</i>			
1.	Mar Theophilus Training College, Trivandrum	Trivandrum	100
2.	S. N. Training College, Nedunganda	Trivandrum	100
3.	Karmala Rani Training College, Quilon	Quilon	100
4.	Mount Tabor Training College, Pathanapuram	Quilon	100
5.	Titus II Training College, Thiruvalla	Alleppey	100
6.	N. S. S. Training College, Pandalam	Alleppey	100
7.	Peet Memorial Training College, Mavelikkara	Alleppey	100
8.	St. Thomas Training College, Palai	Kottayam	100
9.	Mt. Carmel Training College, Kottayam	Kottayam	100
10.	St. Thomas Training College, Mannanam	Kottayam	100
11.	N. S. S. Training College, Changanacherry	Kottayam	100
12.	S. N. M. Training College, Moothakunnam	Ernakulam	100
13.	St. Joseph's Training College, Ernakulam	Ernakulam	100
14.	N. S. S. Training College, Ottappalam, Palghat	Palghat	100
15.	Feroke Training College, Kozhikode	Kozhikode	100

TABLE 5-19

Distribution of Training Colleges by District and sanctioned intake 1974-75

District	Government		Private		Total	
	Number	Sanctioned intake	Number	Sanctioned intake	Number	Sanctioned intake
(1)	(2)	(3)	(4)	(5)	(6)	(7)
Trivandrum	1	150	2	200	3	350
Quilon	2	200	2	200
Alleppey	3	300	3	300
Kottayam	4	400	4	400
Idikki
Ernakulam	2	200	2	200
Trichur	1	120	1	120
Palghat	1	100	1	100
Malappuram
Kozhikode	1	100	1	100	2	200
Cannanore	1	100	1	100
Total	4	470	15	1500	19	1970

Source: Training Colleges.

TABLE 5-20
Sanctioned intake, actual intake and outturn of B. Ed. degree holders
1965-66 to 1974-75

<i>Year</i>	<i>Sanctioned intake capacity</i>	<i>Actual intake</i>	<i>Outturn</i>
(1)	(2)	(3)	(4)
1965-66	2380	2394	2177
1966-67	2380	2398	2173
1967-68	2380	2401	2178
1968-69	2400	2483	2172
1969-70	2400	2417	2144
1970-71	2400	2429	2127
1971-72	2380	2400	2138
1972-73	1970	1982	1689
1973-74	1970	1882	1507
1974-75	1970	1994	1690
Total	22630	22780	19995

Source: Principals Training Colleges.

TABLE 5-21
Number of Arts and Science Colleges and Enrolment by District
1973-74

<i>District</i>	<i>Government</i>		<i>Private</i>		<i>Total</i>	
	<i>Number</i>	<i>Enrolment</i>	<i>Number</i>	<i>Enrolment</i>	<i>Number</i>	<i>Enrolment</i>
(1)	(2)	(3)	(4)	(5)	(6)	(7)
Trivandrum	4	7603	11	13811	15	21414
Quilon	13	19574	13	19574
Alleppey	14	19134	14	19134
Kottayam	1	743	16	23765	17	24508
Idikki	2	1953	2	1953
Ernakulam	2	3274	15	19179	17	22453
Trichur	2	1010	12	15003	14	16013
Palghat	3	4539	5	3851	8	8390
Malappuram	1	433	4	2670	5	3103
Kozhikode	2	2670	7	7806	9	10476
Cannanore	2	3755	6	5806	8	9561
Total	17	24027	105	132552	122	156579

Source: Annual report of Kerala and Calicut Universities, 1973.

TABLE 5-22

Progress in the number of Arts and Science Colleges and Enrolment
1956-57 to 1973-74

<i>Year</i>	<i>Number of Colleges</i>	<i>Number of Students</i>
(1)	(2)	(3)
1956-57	28	25254
1961-62	47	41739
1965-66	100	102841
1971-72	117	153437
1973-74	122	156579

TABLE 5-23

Number of students in Arts and Science Colleges by course of study
1973-74

<i>Course</i>	<i>Number of colleges*</i>	<i>Number of students**</i>
(1)	(2)	(3)
Pre Degree	119*	82882
Degree	92	69402
Post Graduate	42	4295
Total	..	156579†

* 27 are Junior Colleges.

** Mutually exclusive.

†66464 are women

Source; Annual reports of Kerala and Calicut Universities.

TABLE 5-24
**Number of Teachers in Arts and Science Colleges
 1956-57 to 1973-74**

<i>Year</i>	<i>Number of Teachers</i>
(1)	(2)
1956-57	1262
1961-62	2336
1965-66	4553
1971-72	7267
1973-74	7565*

* of which 2140 are women.

TABLE 5-25
Outturn of B.A., B.Sc. and B.Com. Degree holders

<i>Year</i>	<i>B.A.</i>		<i>B.Sc.</i>		<i>B. Com.</i>	
	<i>No. appeared</i>	<i>No. passed</i>	<i>No. appeared</i>	<i>No. passed</i>	<i>No. appeared</i>	<i>No. passed</i>
(1)	(2)	(3)	(4)	(5)	(6)	(7)
1957 March	2603	795	2672	961	464	207
1961 March	3421	1112	5275	2082	604	356
1966 March	3386	1994	7971	4404	1087	705
*1973 June	7192	3942	8182	5052	1445	648

*Excluding Calicut University total final year students in all branches being 5646.

TABLE 5.26

Outturn of M.A., M.Sc. and M. Com. Degree holders

Year	M. A.		M. Sc.		M. Com.	
	No. appeared	No. passed	No. appeared	No. passed	No. appeared	No. passed
(1)	(2)	(3)	(4)	(5)	(6)	(7)
1957	95	79	104	101
1961	364	315	193	166
1966	641	572	538	436	81	74
*1973	1091	717	893	773	77	71

* Excludes examination under Calicut University, Final year Post-graduate students in all branches being 83.

TABLE 5.27

Outturn of Post-Graduates in general Education by subject and by class from Kerala University 1973-74

Subject	No. appeared	No. passed			
		I Class	II Class	III Class	Total
(1)	(2)	(3)	(4)	(5)	(6)
<i>M.A.</i>					
History	123	11	78	26	115
Economics	278	14	99	113	226
Philosophy	51	8	6	14	28
Politics	83	12	68	2	82
Psychology	14	4	9	1	14
English	349	8	105	160	273
Oriental studies	193	49	93	37	179
M. Com.	77	3	38	30	71
M.S.W.	40	4	36	..	40
<i>M.Sc.</i>					
Mathematics	243	45	53	67	165
Statistics	35	8	15	9	32
Physics	157	63	66	20	149
Botany	159	40	101	16	157
Zoology	117	42	69	4	32
Geology	5	3	1	1	5
Chemistry	143	20	77	23	120
Analytical and applied chemistry	27	10	9	4	23
Biochemistry	7	6	1	..	7

Source: Annual report of Kerala University.

TABLE 5.28
Post graduate courses and number of students in different Universities of Kerala 1974-75

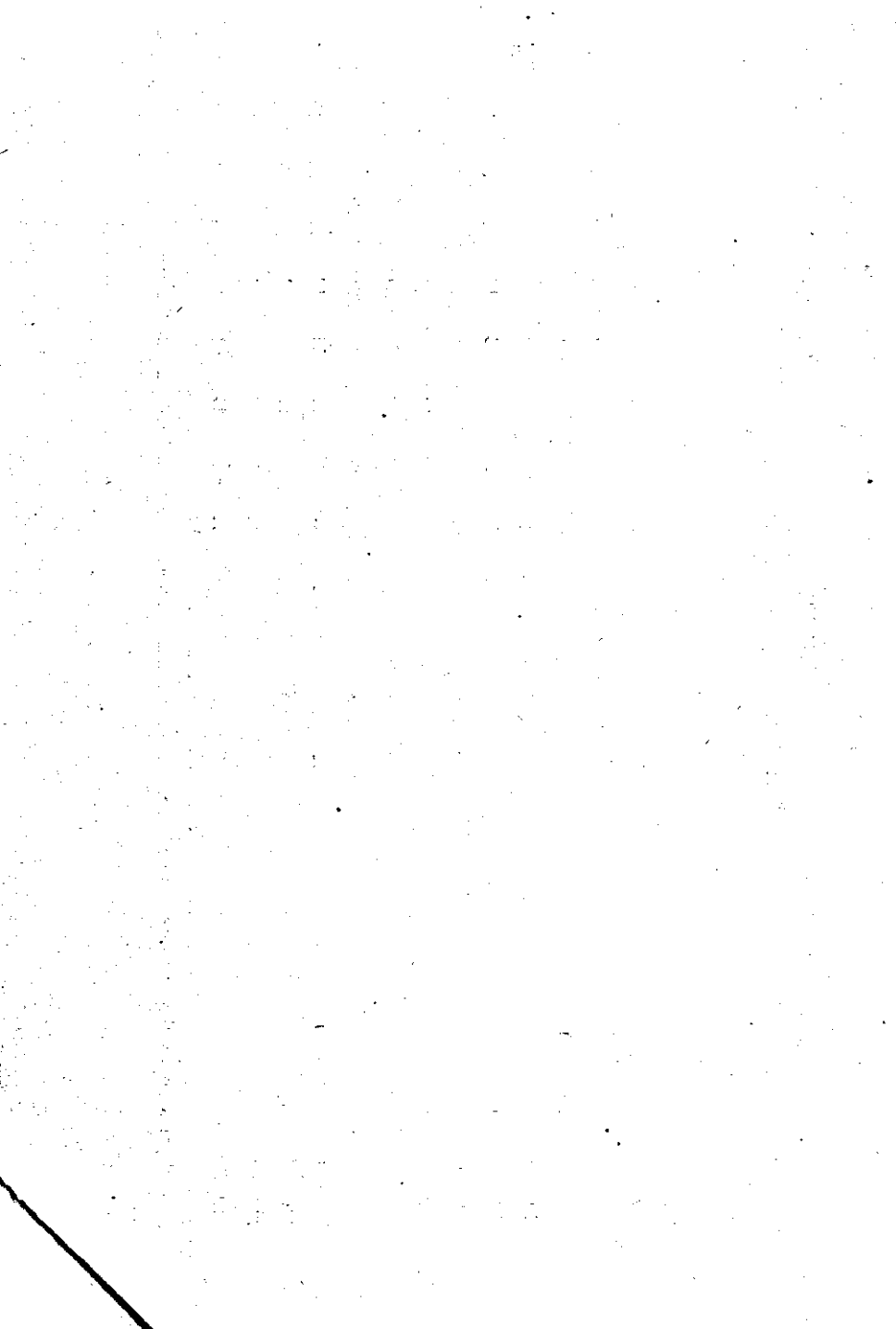
Name of Department	Kerala University		Calicut University		Cochin University		Total	
	Boys	Girls	Total	Boys	Girls	Total	Boys	Girls
1. Department of Economics	38	10	48	38	10
2. " Politics	35	11	46	35	11
3. " Psychology	12	21	33	12	21
4. " Sociology	12	26	38	12	26
5. " Lib. Science	7	23	30	7	23
6. " English	18	32	50	11	5	16	29	37
7. " German	91	18	109	91	18
8. " Russian	72	29	101	72	29
9. " Malayalam	16	13	29	11	10	21	27	23
10. " Tamil	7	14	21	7	14
11. " Linguistics	14	21	35	14	21
12. " Mathematics	11	22	33	11	22
13. " Statistics	10	14	24	10	14
14. " Physics	13	4	17	27	11
15. " Chemistry	10	9	19
16. " Biochemistry	8	6	14	8	6
17. " Botany	13	10	23	7	9	16	20	19
18. " Zoology	5	9	14
19. " Geology	11	..	11	5	9
20. " Education	16	14	30	8	7	15	11	11
21. " Hindi	16	14	30	10	18
22. " Arabics	13	..	13
23. " Commerce	26	..	26
(i) M. Com.	26	..
(ii) M.B.A.	163	8	171	163	8
24. " History	7	21	28	7	21
25. " Marine Science	19	9
26. " Law	33	3
Total	391	284	675	127	88	215	252	49
							301	421
							770	1191

TABLE 5.29

*Number of students appeared and passed in different courses of studies under Kerala University in 1971-72 and 1972-73

Name of course	1971-72						1972-73					
	No. appeared			No. passed			No. appeared			No. passed		
	M	F	T	M	F	T	M	F	T	M	F	T
(1)	(2)	(3)	(4)	(5)	(6)	(7)	(8)	(9)	(10)	(11)	(12)	(13)
Pre-Degree	31470	22998	54466	11298	8902	20200	35859	27307	63166	9628	7812	17440
B.A.	5427	4703	10130	3014	2915	5929	4361	3904	8265	2474	2266	4740
B.Sc.	5388	3868	9256	3212	2718	5930	5937	3962	9899	3368	2415	5783
B.Sc. (Home Science)	..	205	205	..	194	194	..	201	201	..	191	191
B.L./LL.B.	413	42	455	220	21	241	392	40	432	260	29	289
B.A. (Music)	..	11	11	..	10	10	..	13	13	..	13	13
B.Com.	2059	215	2274	841	60	901	2076	201	2277	905	70	975
B. Lib. Science	18	13	31	15	13	28	10	19	29	9	17	26
M.A.	779	603	1382	521	506	1027	743	659	1402	586	550	1136
M.Sc.	486	398	884	411	353	764	445	429	874	379	393	772
M.Sc. (Home Science)	..	21	21	..	20	20	..	19	19	..	19	19
M.A. (Music)	..	3	3	..	3	3	..	2	2	..	2	2
M.Com.	86	11	97	74	11	85	73	5	78	65	6	71
M.L./LL.M	26	5	31	6	..	6	11	2	13	3	1	4

*Both for March and September Examinations. No Examination in September for Post-Graduate Courses.



SECTION 6

EDUCATED MAN POWER—TECHNICAL AND PROFESSIONAL



TABLE 6.1
Progress of Technical Education Institutions in Kerala—Engineering Colleges

(1) Name of Institution	(2) Year of establishment	(3) Government or private	(4) Courses started during the year of establishment	(5) New courses started	(6) Year of new courses started
1. Engineering College, Trivandrum	1939-40	Government	Graduate courses in Civil, Mechanical and Electrical Engineering	1. Post-Graduate courses in Civil, Mechanical and Electrical Engineering 2. Graduate courses in Architecture 3. Graduate courses in Telecommunication 4. Post-Graduate courses in Micro Wave Engineering	1958-59 1962-63 1964-65 1973-74
2. T.K.M. Engineering College, Quilon	1958-59	Private	Graduate courses in Civil, Mechanical and Electrical Engineering
3. Mar Athanasius College of Engineering, Kothamangalam	1961-62	Private	Graduate courses in Civil, Mechanical and Electrical Engineering
4. Engineering College, Trichur	1958-59	Government	Graduate courses in Civil, Mechanical and Electrical Engineering	1. Graduate course in Chemical Engineering 2. Post-Graduate courses in Civil, Mechanical and Electrical Engineering 3. Post-Graduate course in Chemical Engineering	1962-63 1971-72 1973-74
5. N.S.S. Engineering College, Palghat	1960-61	private	Graduate courses in Civil, Mechanical and Electrical Engineering
6. Regional Engineering College, Calicut	1960-61	Government	Graduate courses in Civil, Mechanical and Electrical Engineering	Post-Graduate courses in Civil, Mechanical and Electrical Engineering	1972-73

Source: Department of Technical Education.

TABLE 6.2
Progress of Technical Education Institutions in Kerala—Polytechnics

Name of Institution	Year of establishment	Government/ Private	Courses started during the year of establishment	New courses started	Year of new courses started
(1)	(2)	(3)	(4)	(5)	(6)
1. Kerala Government Polytechnic, Calicut	1946-47	Government	Diploma courses in Civil, Mechanical, Electrical and Chemical Engineering
2. Maharajas Technological Institute, Trichur	1947-48	Government	Diploma courses in Civil, Mechanical and Electrical Engineering
3. Government Polytechnic, Kalamassery	1951-52	Government	Diploma courses in Civil, Mechanical, Electrical, Automobile and Chemical Technology
4. Thyagarajas Polytechnic, Alagappanagar	1956-57	Private	Diploma courses in Civil, Mechanical and Electrical Engineering
5. Sree Narayana Polytechnic, Kottiyam, Quilon	1957-58	Private	Diploma courses in Civil, Mechanical and Electrical Engineering
6. Central Polytechnic, Trivandrum	1958-59	Government	Diploma courses in Civil, Mechanical, Electrical Engineering and Textile Technology	Diploma course in Electronics	1971-72
7. Government Polytechnic, Cannanore	1958-59	Government	Diploma courses in Civil, Mechanical and Electrical Engineering and Textile Technology
8. Carnal Polytechnic, Alleppey	1958-59	Private	Diploma courses in Civil, Mechanical and Electrical Engineering
9. N.S.S. Polytechnic, Pandalam	1958-59	Private	Diploma courses in Civil, Mechanical and Electrical Engineering
10. Sree Rama Polytechnic, Valapad	1958-59	Private	Diploma courses in Civil, Mechanical and Electrical Engineering

TABLE 6.2 (cont.)

(1)	(2)	(3)	(4)	(5)	(6)
11. Government Polytechnic, Kottayam	1960-61	Government	Diploma courses in Civil, Mechanical and Electrical Engineering
12. Government Polytechnic, Perinthalmanna	1961-62	Government	Diploma courses in Civil, Mechanical and Electrical Engineering
13. Women's Polytechnic, Trivandrum	1961-62	Government	Costume Design, Dress Making and Commercial Practice	Instrument Technology	1973-74
14. S.S.M. Polytechnic, Tirur	1962-63	Private	Diploma courses in Civil, Mechanical and Electrical Engineering	Diploma courses in Electronics	1971-72
15. Women's Polytechnic, Trichur	1962-63	Government	Diploma courses in Costume Design, Dress Making, Electronics and Commercial Practice
16. Women's Polytechnic, Calicut	1963-64	Government	Diploma courses in Costume Design, Dress Making and Commercial Practice
17. Swami Nityananda Polytechnic, Kanhangad	1966-67	Private	Diploma courses in Mechanical and Automobile Engineering
18. Institute of Printing Technology, Shoranur	1967-68	Government	Diploma course in Printing Technology

Source: Department of Technical Education.

TABLE 6.3
Progress of Technical Education Institutions in Kerala—Junior Technical Schools

	(1) Name of Institution	(2) Year of establishment	(3) Government/ Private		(4) Courses started during the year of establishment	(5) Intake capacity 1974-75
			Government	Private		
1.	Junior Technical School, Attingal	1960-61	Government		J.T.S.L.C. (specialisation in various work-shop trades such as Foundry, Smithy, Pattern Making, Fitting, Sheet Metal Work, Welding and Turning given)	60
2.	Do.	"	"	"	"	60
3.	Pampady	"	"	"	"	60
4.	Sertallai	"	"	"	"	60
5.	Perumbavoor	"	"	"	"	60
6.	Kunnankulam	"	"	"	"	60
7.	Shoranur	"	"	"	"	60
8.	Manjeri	"	"	"	"	60
9.	Cheruvathur	"	"	"	"	60
10.	Palai	1961-62	"	"	"	60
11.	Koratty	"	"	"	"	60
12.	Chittur	"	"	"	"	60
13.	Kodungallur	"	"	"	"	60
14.	Nedumangad	1962-63	"	"	"	60
15.	Krishnapuram	"	"	"	"	60
16.	Ezhukonc	"	"	"	"	60
17.	Mattannur	"	"	"	"	60
18.	Cannanore	1963-64	"	"	"	60
19.	Trichur	"	"	"	"	60
20.	Calicut	"	"	"	"	30
21.	Badagara	1968-69	"	"	"	1230

Source: Department of Technical Education.

TABLE 6.4

Intake Capacity in Graduate Courses in Engineering—College-wise—1975

Name of the College	Intake capacity in each course						Total
	Civil	Mechanical	Electrical	Telecommu- nication	Chemical	Architecture	
(1)	(2)	(3)	(4)	(5)	(6)	(7)	(8)
1. *College of Engineering, Trivandrum	51	41	45	45	..	15	197
2. T.K.M. College of Engineering, Quilon	52	44	48	144
3. Mar Athanasius College of Engineering, Kothamangalam, Ernakulam	36	28	32	96
4. *Engineering College, Trichur	37	29	33	..	40	..	139
5. N.S.S. College of Engineering, Palghat	36	28	32	96
6. Regional Engineering College, Calicut	66	94	90	250
Total	278	264	280	45	40	15	922

*In addition to the regular course there are part-time courses in Civil, Mechanical and Electrical Engineering intake capacity being 15 candidates for each course.

Source: Department of Technical Education.

TABLE 6.5
Intake Capacity in Diploma Course in Engineering—Institution-wise 1975

Sl. No.	Name of Institution	Intake capacity in each Course							Total
		Civil/ Mechanical/ Electrical	Automobile	Textile Technology	Chemical Engineering	Electronics	Chemical Technology		
(1)	(2)	(3)	(4)	(5)	(6)	(7)	(8)	(9)	
1.	*Central Polytechnic, Trivandrum	96	..	30	..	20	..	146	
2.	S.N. Polytechnics, Kottiyam, Quilon	144	144	
3.	Government Polytechnic, Kottayam	96	96	
4.	Carmel Polytechnic, Alleppey	144	144	
5.	N.S.S. Polytechnic, Pandalam, Alleppey	144	144	
6.	Thyagaraja, Alagappanagar, Puthukkad	144	144	
7.	*Government Polytechnic, Kalamasserry	132	30	20	182	
8.	*Maharajas Technological Institute, Trichur	96	96	
9.	Sree Rama Polytechnic, Valapad	96	96	
10.	Government Polytechnic, Perinthalmanna	96	96	
11.	Institute of Printing Technology, Shoranur	30 (Printing Technology)	
12.	S.S.M. Polytechnic, Tirur	96	24	..	120	
13.	*Kerala Government Polytechnic, Calicut	168	30	198	
14.	Government Polytechnic, Cannanore	108	..	30	138	
15.	Swamy Nithyananda Polytechnic, Kanhangad	30	30	60	
Total		1590	60	60	30	44	20	1834	

*In addition to the regular course there are part-time courses in Civil, Electrical and Mechanical Engineering intake capacity being 16 for each.

TABLE 6.6

Intake capacity in Diploma Courses Conducted in Women's Polytechnics 1975

Name of Institution	Intake capacity in each course				
	Costume design and dress making	Electronics	Commercial practice	Instrument technology	Total
(1)	(2)	(3)	(4)	(5)	(6)
1. Women's Polytechnic, Trivandrum	30	..	50	30	110
2. ,, Trichur	30	40	50	..	120
3. ,, Calicut	30	..	50	..	80
Total	90	40	150	30	310

Source: Department of Technical Education

TABLE 6.7

Enrolment and Staff in Polytechnics in each District 1974-75

District	No. of Institution	Students	Teachers
(1)	(2)	(3)	(4)
1. Trivandrum	2	853	72
2. Quilon	1	332	76
3. Alleppey	2	766	78
4. Kottayam	1	238	47
5. Idikki
6. Ernakulam	1	622	131
7. Trichur	4	1250	177
8. Palghat	1	84	14
9. Malappuram	2	506	96
10. Kozhikode	2	787	102
11. Cannanore	2	374	95
Total	18	5812	888

TABLE 6.8

Enrolment and Staff in Junior Technical Schools in each District 1974-75

District	No. of Institution	Students	Teachers
(1)	(2)	(3)	(4)
1. Trivandrum	2	353	54
2. Quilon	2	360	57
3. Alleppey	2	333	57
4. Kottayam	2	330	52
5. Idikki
6. Ernakulam	1	170	28
7. Trichur	4	682	112
8. Palghat	2	312	57
9. Malappuram	1	163	28
10. Kozhikode	2	262	49
11. Cannanore	3	420	75
• Total	21	3385	569

TABLE 6.9

Number of Industrial Training Institutes and Intake of Trainees District-wise 1974-75

District	Government		Private		Total	
	No. of I.T. I.	Intake of Trainees	No. of I. T. I.	Intake of Trainees	No. of I.T.I.	Intake of Trainees
(1)	(2)	(3)	(4)	(5)	(6)	(7)
Trivandrum	3	1872	4	352	7	2224
Quilon	1	648	3	272	4	920
Alleppey	1	648	8	1040	9	1688
Kottayam	1	632	2	88	3	720
Idikki	1	32	1	32
Ernakulam	1	704	8	512	9	1216
Trichur	1	656	1	52	2	708
Palghat	1	672	1	672
Malappuram	1	160	1	16	2	176
Kozhikode	1	376	1	376
Cannanore	1	680	1	32	2	712
Total	12	7048	29	2396	41	9444

TABLE 6.10

Distribution of Trainees according to intake in each trade in the I.T.I.—1974-75

Trade	Number of Trainees		
	Government	Private	Total
(1)	(2)	(3)	(4)
1. Draftsman (Civil)	160	288	448
2. Draftsman Mechanic	256	304	560
3. Draftsman Electrician	544	128	672
4. Electronics	64	..	64
5. Electroplating	16	..	16
6. Refrigeration and Air Conditioning	128	..	128
7. Mechanic (Instrument)	160	..	160
8. Mechanic (Radio and Telecommunication)	192	176	368
9. Surveyor	128	96	224
10. Fitter	1152	928	2080
11. Turner	600	72	672
12. Machinist	672	24	696
13. Wireman	432	..	432
14. Tractor Mechanic	64	..	64
15. Motor Mechanic	368	48	416
16. Mechanic Diesel	80	..	80
17. Moulder	272	32	304
18. Pattern Maker	..	32	32
19. Welder	672	188	860
20. Sheet Metal Worker	256	32	288
21. Carpenter	368	16	384
22. Blacksmith	272	32	304
23. Painter	32	..	32
24. Plumber	160	..	160
Total	7048	2396	9444

TABLE 6.11

District-wise number of private commercial institutions and private industrial schools recognised by the State Government 1974-75

District	Number of Private Institutions	
	Commercial Institute	Industrial School
(1)	(2)	(3)
Trivandrum	125	30
Quilon	134	11
Alleppey	130	4
Kottayam	81	15
Idikki	10	1
Ernakulam	118	10
Trichur	147	10
Palghat	65	7
Malappuram	34	3
Kozhikode	47	5
Cannanore	59	3
Total	950	99

Source: Director of Technical Education.

TABLE 6.12

Intake of Engineering Graduates—Branch-wise 1966-67 to 1974-75

Year	Branch-wise actual intake								Total
	Sanctioned intake	Civil	Mechanical	Electrical	Architecture	Telecommunication	Chemical Engineering		
(1)	(2)	(3)	(4)	(5)	(6)	(7)	(8)	(9)	
1966-67	1064	272	349	311	58	10	30	1030	
1967-68	1159	270	366	345	58	10	30	1079	
1968-69	946	187	313	278	58	10	30	876	
1969-70	875	98	330	290	44	10	45	817	
1970-71	836	83	317	216	45	10	45	716	
1971-72	830	96	279	172	45	5	45	642	
1972-73	830	95	275	181	45	43	45	684	
1973-74	922	267	287	287	10	45	36	932	
1974-75	922	260	264	230	15	45	40	854	

Source: Director of Technical Education.

TABLE 6.13
Outturn of Engineering Graduates—Branch-wise 1956-67 to 1974-75

Year	Branch-wise outturn							Total
	Civil	Mechanical	Electrical	Architecture	Telecommu- nication	Chemical Engineering	(8)	
(1)	(2)	(3)	(4)	(5)	(6)	(7)	(8)	
1966-67	204	282	229	17	31	22	785	
1967-68	198	379	297	17	36	25	952	
1968-69	262	433	363	26	46	15	1145	
1969-70	328	533	542	30	88	32	1553	
1970-71	175	327	302	34	57	30	925	
1971-72	80	234	162	18	29	29	552	
1972-73	67	230	80	8	22	20	527	
1973-74	57	245	185	..	28	29	544	
1974-75	45	180	115	3	38	33	414	

The five year Engineering course started during the year 1962-63 was discontinued from the year 1966-67 and three year Engineering Degree course was also discontinued from the year 1968-69. No examination for them was conducted from 1971-72.

Source: Director of Technical Education.

TABLE 6.14

Intake of Diploma Holders—Branch-wise 1966-67 to 1974-75

Year	Sanctioned intake	Branch-wise actual intake									Total
		Civil	Mechanical	Electrical	Tele- communi- cation	Chemical Engineering	Chemical Technology	Automobile Engineering	Textile Technology		
(1)	(2)	(3)	(4)	(5)	(6)	(7)	(8)	(9)	(10)	(11)	
1966-67	2469	767	702	618	30	29	20	30	57	2253	
1967-68	2294	787	690	609	30	26	20	60	60	2282	
1968-69	1921	568	620	522	30	26	20	63	60	1906	
1969-70	1968	566	626	521	40	28	20	60	60	1921	
1970-71	1869	568	587	484	60	30	20	60	60	1869	
1971-72	1905	561	591	495	85	30	20	59	60	1901	
1972-73	1804		*1577		50	30	20	60	60	1797	
1973-74	1804		*1395		61	30	20	60	63	1629	
1974-75	1804		*1568		52	30	20	50	60	1780	

* Civil, Mechanical and Electrical.

Note:—The Institute of Printing Technology which was started in 1967-68 with intake capacity 30 students is excluded.

* Source:—Director of Technical Education.

TABLE 6.15
Outturn of Diploma Holders—Branch-wise 1966-67 to 1974-75

Year	Branch-wise actual outturn										Total
	(1)	(2)	(3)	(4)	(5)	(6)	(7)	(8)	(9)	(10)	
	Civil	Mechanical	Electrical	Telecommu- nication	Chemical Engineering	Chemical Technology	Automobile Engineering	Textile Technology			
1966-67	406	521	414	24	3	11	16	20	1415		
1967-68	441	657	447	23	20	24	16	32	1660		
1968-69	377	654	424	21	27	11	30	46	1590		
1969-70	348	617	331	30	26	11	38	24	1425		
1970-71	233	383	291	28	22	21	35	23	1036		
1971-72	134	293	225	32	18	11	35	24	772		
1972-73	110	200	185	16	10	11	21	26	579		
1973-74	124	145	175	15	10	7	5	21	502		
1974-75	87	139	132	13	3	8	24	29	435		

Printing Technology excluded (intake capacity 30).

Source: Director of Technical Education.

[TABLE 6.16
Sanctioned and actual intake of students in post-graduate courses in Engineering 1966-67 to 1974-75

Year	Sanctioned intake (2)	Actual intake						Total (8)
		Civil (3)	Mechanical (4)	Electrical (5)	Chemical Engineering (6)	Electronics (7)		
1966-67	50	12	16	22	50	
1967-68	50	10	18	21	49	
1968-69	50	6	14	8	28	
1969-70	50	13	16	21	50	
1970-71	50	11	17	22	50	
1971-72	85	22	28	33	6	..	89	
1972-73	104	36	31	31	6	..	104	
1973-74	114	36	31	31	6	10	114	
1974-75	114	36	31	31	6	10	114	

Source: Director of Technical Education.

TABLE 6.17

Intake and outturn of Medical graduates (M.B.B.S.) from the Medical Colleges in Kerala 1966-1975

<i>Year</i>	<i>No. of Colleges</i>	<i>Intake</i>	<i>Outturn</i>
(1)	(2)	(3)	(4)
1966	4	543	342
1967	4	585	370
1968	4	537	397
1969	4	543	361
1970	4	544	397
1971	4	542	426
1972	4	543	488
1973	4	541	486
1974	4	521	483
1975	4	525	464

Source: Medical Colleges.

TABLE 6.18

Post-graduate courses in Medical Colleges and sanctioned intake capacity 1974-75

<i>Name of College</i>	<i>Name of Course</i>	<i>Sanctioned intake</i>
(1)	(2)	(3)
Medical College, Trivandrum	M.D. General Medicine	13
	” Obst. and Gynaecology	8
	” Paediatrics	3
	” Anatomy	2
	” Physiology	2
	” Biochemistry	2
	” Pathology	6
	” Pharmacology	4
	” Forensic Medicine	2
	M.S. General Surgery	20
	” Ophthalmology	4
” Orthopaedics	2	
Medical College, Kottayam	M.D. General Medicine	2
	” Physiology	2
	M.S. General Surgery	2

Source: Medical College.

TABLE 6.19

Post-graduate Diploma courses in the Medical Colleges and sanctioned intake 1974-75

<i>Name of College</i>	<i>Name of Course</i>	<i>Sanctioned intake</i>
(1)	(2)	(3)
Medical College, Trivandrum	Diploma in General Pathology	3
	Obst. and Gynaccology	6
	Child Health	6
	Ophthalmology	3
	Orthopaedic Surgery	3
	Laryngology and Otology	3
	Public Health	12
	Anaesthesiology	4
	Medical Radiology	3
Medical College, Calicut	Gynaecology and Obstetrics (D.G.O.)	8
	Child Health	6
	Veneral Disease	2
	Ophthalmology	6

Source: Director of Health Services.

TABLE 6.20

Paramedical graduate courses 1974-75

<i>Name of College</i>	<i>Name of Course</i>	<i>Sanctioned intake</i>
(1)	(2)	(3)
Medical College, Trivandrum	B.D.S.	30
	B. Pharm.	25
	B.Sc. Nursing	25

Source: Director of Health Services.

TABLE 6.21
School of Nursing and sanctioned intake 1974-75

<i>Name of Institution</i>		<i>Sanctioned intake*</i>
(1)		(2)
GOVERNMENT		
1.	School of Nursing, Trivandrum	30
2.	" Quilon	..
3.	" Alleppey	..
4.	" Kottayam	..
5.	" Idikki	Not started
6.	" Ernakulam	25
7.	" Trichur	..
8.	" Palghat	..
9.	" Malappuram	Not started
10.	" Kozhikode	..
11.	" Cannanore	30
PRIVATE		
1.	Holy Cross Hospital, Kottiyam, Quilon	25
2.	Benzagar Hospital, Quilon	17
3.	S.S. Memorial Hospital, Quilon	10
4.	Medical Mission Hospital, Thiruvalla	15
5.	Pushpagiri Hospital, Thiruvalla	14
6.	St. Thomas Hospital, Changanacherry	12
7.	Cerithas Hospital, Thellakom, Kottayam	12
8.	Mandiram Hospital, Manganam, Kottayam	12
9.	I.H.M. Hospital, Bharananganam, Palai	15
10.	M.M.M. Hospital, Kolencherry, Ernakulam	20
11.	Green gardens, Cherthalay	12
12.	Lissie Hospital, Ernakulam	26
13.	Lourde Hospital, Ernakulam	15
14.	Little Flower Hospital, Ankamaly, Ernakulam	15
15.	Jubilee Mission Hospital, Trichur	15
16.	Nirmala Hospital, Calicut	12
17.	Malik Deenar Charitable Hospital, Kasargode	15

*No. of seats in Government Nursing School will vary according to necessity and availability of fund.

Source: Director of Health Services.

TABLE 6.22

Other Para Medical certificate courses in different centres and sanctioned intake 1974-75

<i>Name of Institution</i>	<i>Sanctioned intake</i>
(1)	(2)
A.N.M. TRAINING	
1. W. & C. Hospital, Thycaud	Not fixed
2. Government Hospital, Peroorkada	10
3. Government Hospital, Calicut	10
4. Government Hospital, Palghat	Not started
5. Sri Ramakrishna Asrom Hospital, Trivandrum	15
6. S.N.M.H., Sivagiri, Varkala	15
7. St. Thomas Mission Hospital, Kattanam	15
8. L.M.S. Hospital, Kundara	15
9. S.N.M.M. Hospital, Cherthala	12
10. N.S.S. Medical Mission, Pandalam	15
MEDICAL LABORATORY TECHNICIAN COURSE	
1. Trivandrum Medical College	24
2. Calicut Medical College	24
3. S.N.M.H. Sivagiri, Varkala	6
4. Mar Gee Varghese Memorial Hospital, Kangazha	4
5. Mandiram Hospital, Manganam	6
PHARMACIST COURSE	
1. T.D. Medical College, Alleppey	50
2. Medical College, Kottayam	50
3. Medical College, Calicut	80
HEALTH INSPECTORS TRAINING COURSE	
1. Medical College, Trivandrum	60
2. Medical College, Kottayam	60
3. Medical College, Calicut	60
4. Rural Institute, Thavanoor	30

Source: Director of Health Services.

TABLE 6-23

**Intake and outturn of Degree and Diploma holders in
Ayurveda 1966 to 1975**

Year	Sanctioned intake		Actual intake		Outturn	
	B.A.M.	D.A.M.	B.A.M.	D.A.M.	B.A.M.	D.A.M.
(1)	(2)	(3)	(4)	(5)	(6)	(7)
1966-67	50	130	50	126	18	81
1967-68	50	130	50	130	20	56
1968-69	50	140	50	140	17	50
1969-70	50	140	50	148	19	55
1970-71	50	140	50	140	25	59
1971-72	80	40	80	40	23	51
1972-73	110	..	110	..	21	51
1973-74	110	..	111	..	11	51
1974-75	110	..	110	..	38	66

Source: Ayurveda Colleges.

TABLE 6-24

**Ayurveda Colleges and Research Centres and sanctioned intake in different
courses of studies 1974-75**

Name of Institutions	Course of study	Sanctioned intake
(1)	(2)	(3)
1. Post-graduate Research Centre, Poojappura, Trivandrum	M.D. (Ay.) (Kayachikitsa)	20
	M.D. (Ay.) (Dravyaguna)	20
2. Government Ayurveda College, Trivandrum	B.A.M.	50
3. Government Ayurveda College, Trippunithura	B.A.M.	30
4. Ayurveda College, Kottakkal	B.A.M.	30

Diploma courses were discontinued since 1971-72.

Source: Institutions.

TABLE 6-25

Homoeopathic Colleges in the State and sanctioned intake 1974-75

Name of Institutions*	Course of study	Sanctioned intake
(1)	(2)	(3)
1. Athurasram Homoeopathic Medical College, Kuruchy, Kottayam	D.H.M.S. (Diploma in Homoeo Medicine and Surgery)	100
2. Homoeo Medical College, Trivandrum	do.	60
3. Royal College of Homoeopathic Physicians, Cochin-11	do.	60

*All are private aided institutions. Government have started Homoeopathic College for degree course at Calicut in 1976.

Source: Director of Homoeopathic Medicines.

TABLE 6-26

Intake and outturn of Agricultural graduates and post-graduates 1961-62 to 1974-75

Year	Actual intake			Outturn		
	B.Sc. (Agrl.)	M.Sc. (Agrl.)	Ph. D.	B.Sc. (Agrl.)	M.Sc. (Agrl.)	Ph. D.
(1)	(2)	(3)	(4)	(5)	(6)	(7)
1961-62	80	26	..	78
1962-63	51	23	..	59	22	..
1963-64	72	30	..	60	21	..
1964-65	71	28	4	54	24	..
1965-66	97	30	2	46	30	..
1966-67	101	50	..	55	27	..
1967-68	67	22	..	69	30	..
1968-69	57	20	..	79	48	..
1969-70	53	20	..	56	21	..
1970-71	58	21	..	52	20	..
1971-72	50	32	22	2
1972-73	83	24	10	53	17	..
1973-74	83	10	18	56	17	..
1974-75	83	10	11	60	15	..

Four year B.Sc. (Horticulture) started in 1972-73 at Mannuthi, intake being 20 in every year.

Source: College of Agriculture, Vellayani.

TABLE 6-27

**Intake and outturn of Veterinary graduates and post-graduates
1961-62 to 1975-76**

Year	Intake			Outturn		
	B.V.Sc.	M.V.Sc.	Ph.D.	B.V.Sc.	M.V.Sc.	Ph.D.
(1)	(2)	(3)	(4)	(5)	(6)	(7)
1961-62	50	64
1962-63	47	70
1963-64	54	72
1964-65	48	4	..	64
1965-66	36	8	..	57	2	..
1966-67	50	8	..	35	4	..
1967-68	50	9	..	42	9	..
1968-69	46	7	..	42	5	..
1969-70	33	13	..	31	5	..
1970-71	39	6	..	36	7	..
1971-72	40	7	..	42	8	..
1972-73	40	13	..	32	9	..
1973-74	62	18	2	41	6	1
1974-75	59	13	2	36	7	1
1975-76	43	10	2	31	7	..

Source: Veterinary College, Mannuthi, Trichur.

TABLE 6-28

**Institution for studies in Agricultural and Veterinary subjects and
intake capacity 1974-75**

Name of Institution*	Course of study	Intake capacity
(1)	(2)	(3)
1. College of Agriculture, Vellayani, Trivandrum	B.Sc. (Agrl.)	80
	M.Sc. (Agrl.)	24
	Ph.D.	10
2. College of Veterinary and Animal Science, Mannuthy, Trichur	B.V.Sc.	40
	M.V.Sc.	22
	Ph.D.	9
3. College of Horticulture, Mannuthy, Trichur	B.Sc. (Hort.)	20

*These institutions are under Kerala Agricultural University, Mannuthy, Trichur, established in 1971.

Source: Agricultural University.

TABLE 6.29

Enrolment of students and number of teachers in Law Colleges
1956-57 to 1973-74

<i>Year</i>	<i>No. of Colleges</i>	<i>No. of teachers</i>	<i>Enrolment</i>
(1)	(2)	(3)	(4)
1956-57	2	12	540
1961-62	2	12	409
1965-66	2	13	450
1971-72	4	40	1632
1973-74	4	40	1601

TABLE 6.30

Law Colleges in the State and intake capacity 1974-75

<i>Name of Institution</i>	<i>Name of Course</i>	<i>Intake capacity</i>
(1)	(2)	(3)
1. Government Law College, Trivandrum	LL.B.	100
	LL.M.	10
2. Government Law College, Ernakulam	LL.B.	200
	LL.M.	6
3. Government Law College, Calicut	LL.B.	278
4. The Kerala Law Academy, Trivandrum (Private)	LL.B.	200

TABLE 6.31

Institution for Co-operative Training and Intake Capacity 1974-75

<i>Name of Institution</i>	<i>Name of Course</i>	<i>Intake capacity</i>	
(1)	(2)	(3)	
1. Co-operative College,	Trivandrum	H.D.C.	150
2. " "	Trichur	"	150
3. " "	Kozhikode	"	150
4. " "	Kottayam	"	150
5. Co-operative Training Centre,	Trivandrum	J.D.C.	175
6. " "	Trichur	"	150
7. " "	Kozhikode	"	175

TABLE 6.32

Progress in the number of Institutions, enrolment of students and teachers for Oriental Studies 1956-57 to 1973-74

<i>Year</i>	<i>No. of Institutions</i>	<i>No. of teachers</i>	<i>Enrolment of students</i>
(1)	(2)	(3)	(4)
1956-57	1	22	126
1960-61	7	44	523
1965-66	7	31	374
1971-72	7	34	643
1973-74	11	46	653

TABLE 6.33
Institutions for Aesthetic Education in Kerala 1974-75

<i>Name of Institution</i>	<i>Course of study</i>
(1)	(2)
1. S.S.T. College of Music, Trivandrum	Ganabhooshanam, Natanabhooshanam
2. Music Academy, Palghat	Ganabhooshanam
3. R.L.V. Academy of Fine Arts, Trippunithura	Ganabhooshanam, Kathakali, Bharatha Natyam, Drawing and Painting
4. School of Arts, Trivandrum	Drawing, Painting, Clay Modelling, Ivory and Wood Carving, Silver-smithy and Kustigary work. Ratten and Basket Making Carpet and Durrie Weaving
5. Ravi Varma School of Painting, Mavelikkara	Drawing and Painting Modelling and Sculpture
6. Government Occupational Institute, Trichur	Drawing, Painting and Engraving
7. Kerala Kala Mandalam, Cheruthurthy, Trichur.	Kathakali, Bharatha Natyam and other Arts connected with Kathakali like Kathakali Vocal.

TABLE 6.34
List of Schools for the Handicapped 1974-75

<i>Name of School</i>	<i>Type of Management</i>
(1)	(2)
1. School for the Blind, Deaf and Dumb, Trivandrum-14	Government
2. School for the Blind, Olassa, Kottayam	"
3. School for the Blind, Deaf and Dumb, Kunnankulam	"
4. School for the Deaf, Mutes, Ottappalam	"
5. School for the Blind, Kasargode	"
6. School for the Deaf Children, Thiruvalla	Private
7. Kerala School for the Blind, Mankada, Pallippuram	"
8. School for the Deaf and the Blind, Assisi Mount, Thalayolapparambu.	"

Source : Director of Public Instruction.

10/6/75

