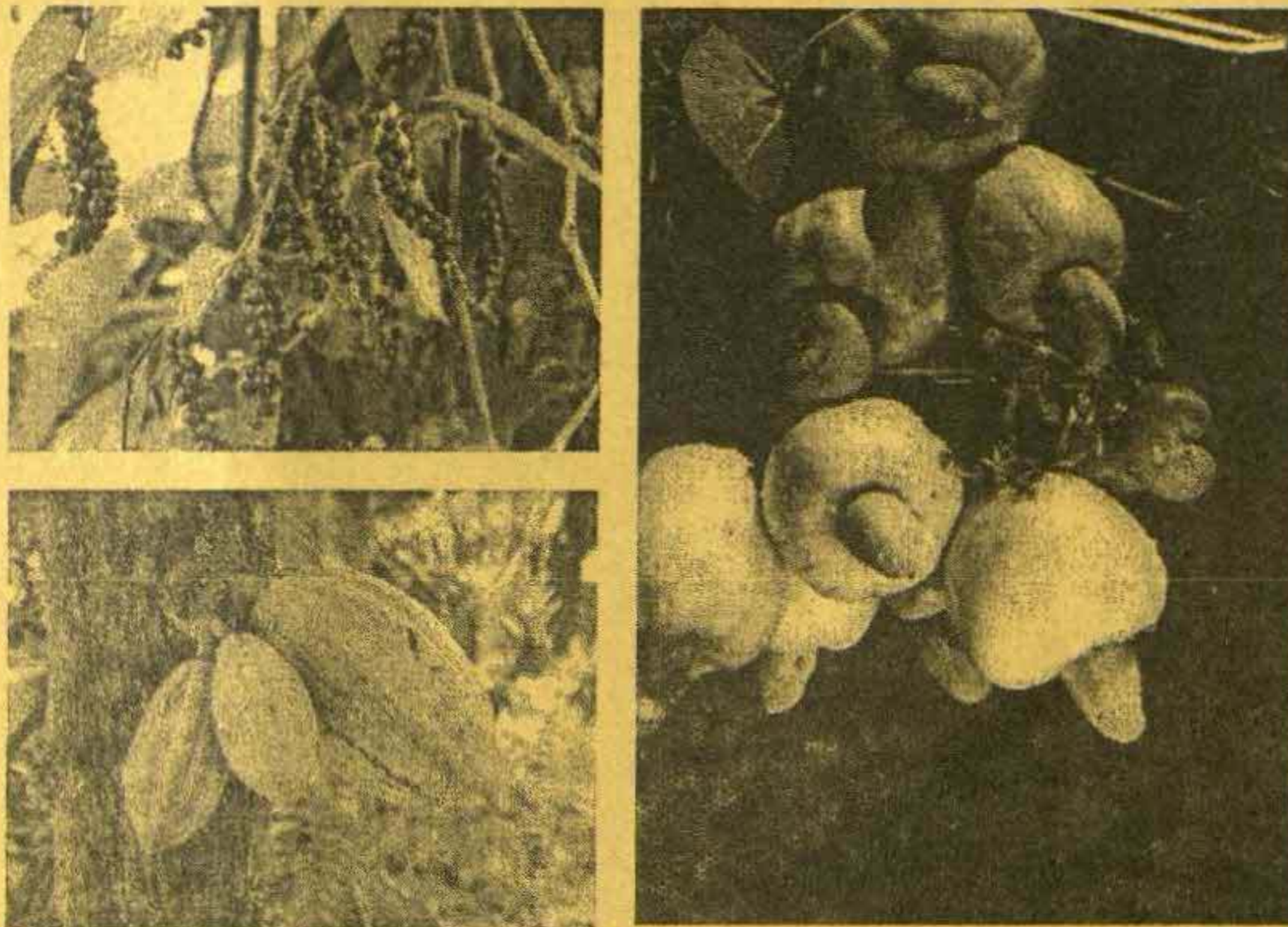


89 no. 1437



kerala
2005 **fast
forward**



**WHOLESALE PRICES OF IMPORTANT
AGRICULTURAL COMMODITIES
FROM 1998-99 TO 2003-04**

**Department of Economics and Statistics
Thiruvananthapuram**

June 2005



Government of Kerala

***WHOLESALE PRICES OF
IMPORTANT AGRICULTURAL
COMMODITIES
FROM 1998-99 TO 2003-04***

**Department of Economics & Statistics
Thiruvananthapuram
JUNE 2005**

PREFACE

The Department of Economics and Statistics is the authorized agency for collection of various types of prices data, its compilation and dissemination to different Government and other Agencies. The prices data are generally classified into three viz. Farm price, Wholesale price and Retail price. These prices are utilised for a variety of purposes from common man's use to the nations economic development.

The collection of Wholesale prices is being done under the Market Intelligence Scheme. The Scheme was administered by the Agriculture Department till April 1966. Afterwards, the work under this scheme was transferred to this Department. The term 'Market Intelligence' relates to information on prices, estimated production, marketable surplus, arrivals, despatches, stocks, losses in storage, Government purchases, issues, demands, market sentiments Etc, which together lead to the interpretation of the market behaviour.

The publication titled "Wholesale Prices of Important Agricultural Commodities from 1998-99 to 2003-04" include prices data of Rice, Arecanut Ripe, Lemongrass oil, Coconut with Husk, Coffee, Cocoa, Tobacco, Tea, Tapioca Raw, Pepper, Banana, Rubber, Turmeric, Sugar, Cardamom, Ginger-Dry, Pineapple, Cashew nut, and Groundnut for the last 6 agriculture years. So far, no publication on Market Intelligence prices data has been brought out independently. I appreciate the efforts done by Shri Sreekumar .B, Assistant Director (Regional Statistical Officer in charge) with the assistance of Smt Alice Cheriyan, Research Assistant, Smt.T.J Santhakumari, U.D. Compiler of M.I. Division, Smt K. Shanthi, Research Officer, Shri K.Soman Nadar, Research Assistant, Smt Ushakumari Kacherivil, I.D.Compiler, of Prices Division and Shri S.Saseedran, U.D Typist of Computer Division, under the supervision and control of Shri D.Rajan, Additional Director (prices). I hope that this publication will be of immense use to public as well as Researchers.

M.R. Balakrishnan
Director

Thiruvananthapuram
Date: 29/06/05

CONTENTS

Sl. No	ITEMS	Page No
	<i>MONTHLY AVERAGE MARKET WHOLESAL PRICE OF</i>	
1	Rice	1
2	Sugar	13
3	Ginger Dry	19
4	Pepper	25
5	Turmeric	37
6	Rubber	43
7	Banana	49
8	Lemon grass oil	61
9	Groundnut	64
10	Pineapple	67
11	Cashew nut	73
12	Tapioca Raw	77
13	Cardamom	89
14	Tobacco	92
15	Tea	104
16	Coffee	107
17	Arecanut Ripe	110
18	Cocoa	122
19	Coconut with husk	128

MONTHLY AVERAGE MARKET WHOLESALE PRICE OF RICE

Rs/Qtl

YEAR: 1998-99

CENTRES	VARIETY	JUL	AUG	SEP	OCT	NOV	DEC	JAN	FEB	MAR	APR	MAY	JUN	AVG
Thiruvananthapuram	Rose	947	973	1004	1055	1101	1115	1126	1135	1143	1146	1140	1145	1086
	Chempa	975	1000	1044	1083	1123	1138	1143	1150	1163	1166	1160	1145	1108
Kollam	Nadan	1180	1158	1186	1238	1250	1250	1200	1288	1250	1240	1225	1250	1226
	Jaya	954	968	1018	1088	1100	1140	1125	1140	1130	1118	1100	1110	1083
Alappuzha	Falgunna	1112	1120	1206	1300	1290	1294	1300	1375	1325	1420	1388	1385	1293
	Punja	918	933	948	1060	990	984	1053	1218	1113	1072	1038	1078	1034
Kottayam	Andhra	1044	1125	1143	1163	1163	1150	1089	1223	1200	1220	1220	1224	1164
	Culture	943	1008	1040	1087	1025	998	1042	1185	1123	1080	1075	1142	1062
Ernakulam	Matta	1034	1080	1180	1200	1200	1160	1156	1259	1256	1245	1225	1266	1188
	Chempa	1100	1135	1160	1200	1200	1200	1250	1289	1336	1290	1250	1256	1222
Thrissur	Matta	1058	1100	1050	1056	1088	1114	1144	1200	1200	1200	1200	1200	1134
	Jaya	930	950	970	1000	1000	1000	1038	1144	1150	1140	1100	1100	1044
Palakkad	Matta	1090	1094	1025	1105	1138	1188	1146	1200	1156	1183	1200	1200	1144
	Bodhana	1085	1100	1125	1195	1238	1288	1290	1300	1213	1242	1213	1250	1212
	Jaya	950	975	1000	1065	1050	1106	1110	1158	1094	1117	1063	1100	1066
	api	1000	1025	1069	1100	1088	1125	1150	1192	1130	1142	1088	1138	1104
	Ponni	1095	1148	1175	1180	1213	1263	1360	1383	1217	1233	1200	1213	1223

(Rice 1998-99 Contd....)

CENTRES	VARIETY	JUL	AUG	SEP	OCT	NOV	DEC	JAN	FEB	MAR	APR	MAY	JUN	AVG
Kozhikode	Bodhana	2100	2138	2138	2175	2200	2213	2200	2250	2250	2317	2263	2300	2212
	Palakkad Matta	1034	1075	1081	1115	1120	1120	1126	1267	1231	1225	1225	1250	1156
Kannur	Rose	1000	1110	1035	1094	1095	1065	1060	1133	1175	1213	1210	1223	1118
Chittoor	Matta	1000	1000	968	1030	1013	1025	1080	1167	1063	1083	1150	1138	1060
	masoori	1000	1000	1000	1080	1100	1100	1180	1267	1138	1183	1250	1250	1129
	Jaya	970	963	950	1030	1013	1000	1050	1167	1075	1033	1000	1000	1021
	API	960	950	950	1030	1013	1000	1050	1133	1050	1033	1000	1000	1014
Alathur	Matta	948	983	1040	1085	1063	1058	1066	1080	1113	1123	1115	1120	1066
	API	914	940	965	995	955	950	956	970	1005	1023	1015	1038	977
	AVERAGE	1052	1079	1095	1147	1147	1156	1173	1241	1204	1211	1197	1212	1159

(Rice Cont....)

YEAR: 1999-2000

		Rs/Qtl												
CENTRES	VARIETY	JUL	AUG	SEP	OCT	NOV	DEC	JAN	FEB	MAR	APR	MAY	JUN	AVG
Thiruvananthapuram	Rose	1149	1155	1155	1167	1170	1194	1200	1200	1192	1208	1211	1222	1185
	Chempa	1140	1140	1140	1154	1180	1208	1220	1225	1215	1223	1230	1238	1193
Kollam	Nadan	1300	1350	1305	1290	1248	1250	1219	1200	1200	1285	1320	1294	1272
	jaya	1124	1213	1235	1233	1155	1165	1156	1160	1168	1195	1193	1156	1179
Alappuzha	Falguna	1350	1300	1300	1290	1250	1250	1288	1300	1310	1326	1286	1260	1293
	Punja	1125	1150	NT	1125	1134	1075	1100	1100	1065	1133	1119	1156	1117
Kottayam	Andhra	1237	1220	1220	1224	1211	1200	1183	1150	1162	1229	1200	1200	1203
	Culture	1188	1212	1224	1185	1117	1120	1166	1152	1116	1145	1130	1167	1160
Ernakulam	Matta	1300	1315	1313	1274	1253	1252	1253	1220	1208	1265	1275	1267	1266
	Chempa	1275	1275	1271	1260	1261	1240	1216	1200	1200	1253	1240	1218	1242
Thrissur	Matta	1210	1250	1250	1180	1150	1170	1200	1200	1200	1213	1250	1250	1210
	Jaya	1090	1050	1070	1014	1025	1050	1075	1000	1000	1100	1100	1090	1055
Palakkad	Matta	1240	1250	1188	1160	1150	1200	-	-	-	-	-	-	1198
	Bodhana	1250	1250	1213	1180	1250	1250	-	-	-	-	-	-	1232
	Jaya	1140	1150	1081	1085	1125	1125	-	-	-	-	-	-	1118
	api	1160	1175	1106	1120	1175	1175	-	-	-	-	-	-	1152
	Ponni	1230	1250	1163	1170	1213	1240	-	-	-	-	-	-	1211

(Rice 1999-2000 Contd....)

CENTRES	VARIETY	JUL	AUG	SEP	OCT	NOV	DEC	JAN	FEB	MAR	APR	MAY	JUN	AVG
Kozhikode	Jeerakasala	2250	2463	2500	2500	2500	2460	-	-	-	-	-	-	2446
	PalakkadMatta	1275	1290	1288	1244	1240	1234	-	-	-	-	-	-	1262
Kannur	Rose	1230	1235	1230	1170	1160	1170	-	-	-	-	-	-	1199
	Matta	1150	1150	1100	1055	1088	1170	-	-	-	-	-	-	1119
Chittoor	masoori	1200	1200	1150	1100	1138	1200	-	-	-	-	-	-	1165
	Jaya	1050	1100	1050	1010	1038	1070	-	-	-	-	-	-	1053
Alathur	Ponmani	1050	1100	1050	1010	1038	1100	-	-	-	-	-	-	1058
	Matta	1133	1150	1110	1138	1187	1208	-	-	-	-	-	-	1154
	api	1057	1080	1050	1060	1057	1058	-	-	-	-	-	-	1060
AVERAGE		1227	1249	1230	1208	1212	1224	1190	1176	1170	1215	1213	1210	1216

(Rice Contd...).

YEAR: 2000-01

Rs/Qtl

CENTRES	VARIETY	JUL	AUG	SEP	OCT	NOV	DEC	JAN	FEB	MAR	APR	MAY	JUN	AVG
Thiruvananthapuram	Rose	1215	1200	1200	1200	1150	1172	1180	1175	1128	1080	1080	1070	1154
Kollam	Chempa	1240	1230	1230	1230	1178	1176	1200	1195	1148	1100	1100	1090	1176
	local	1255	1263	1189	1119	1115	1118	1180	1126	1075	1069	1050	1075	1136
Alappuzha	Jaya	1063	1050	1050	1006	1038	1048	1138	1110	1030	1000	978	963	1040
	Falguna	1225	1164	1150	1145	1200	1197	1275	1275	1275	1206	1175	1175	1205
Kottayam	Punja	1113	1050	NT	1083	1050	1025	1063	1063	NT	NT	925	964	1037
	Andhra	1175	1180	1168	1173	1200	1188	1188	1138	1124	1105	1144	1125	1159
Ernakulam	Culture	1132	1146	1156	1124	1080	1118	1097	1080	1013	986	979	1007	1077
	Matta	1238	1238	1240	1188	1163	1200	1200	1161	1135	1100	1100	1100	1172
Thrissur	Chempa	1200	1206	1205	1200	1213	1210	1190	1156	1140	1138	1175	1175	1184
	Matta	1225	1200	1180	1150	1113	1200	1225	1200	1150	1150	1150	1150	1174
Palakkad	Jaya	1063	1100	1110	1125	1163	1165	1138	1075	1000	1000	1000	1019	1080
	Matta	-	-	-	-	-	-	1175	NT	1070	1038	1088	1125	1099
	Bodhana	-	-	-	-	-	-	1163	1150	1110	1125	1100	1175	1137
	Jaya	-	-	-	-	-	-	1075	1113	960	925	944	988	1001
	api	-	-	-	-	-	-	1125	1056	990	950	969	1025	1019
	Ponni	-	-	-	-	-	-	1175	NT	1090	1100	1110	NT	1119

(Rice 2000-01 Contd....)

CENTRES	VARIETY	JUL	AUG	SEP	OCT	NOV	DEC	JAN	FEB	MAR	APR	MAY	JUN	AVG
Kozhikode	Jecrakasala	-	-	-	-	-	-	2000	1975	1900	1800	1800	1755	1872
	Palakkad Matta	-	-	-	-	-	-	1200	1198	1174	1138	1120	1120	1158
Kannur	Rose	-	-	-	-	-	-	1100	1100	1080	1035	1000	1026	1057
Chittoor	Matta	-	-	-	-	-	-	1100	1057	1006	990	1000	1040	1032
	masoori	-	-	-	-	-	-	1100	1093	1016	990	1038	1020	1043
	Jaya	-	-	-	-	-	-	1050	1000	925	903	908	954	957
	Ponmani	-	-	-	-	-	-	1050	NT	935	903	915	980	957
Alathur	Matta	-	-	-	-	-	-	1168	1144	1084	1055	1060	1016	1088
	Api	-	-	-	-	-	-	1110	1073	1032	1013	988	986	1034
	AVERAGE	1179	1169	1171	1145	1139	1151	1179	1161	1104	1076	1073	1085	1127

(Rice Contd....)

YEAR: 2001-02

CENTRES	VARIETY	Rs/Qtl												
		JUL	AUG	SEP	OCT	NOV	DEC	JAN	FEB	MAR	APR	MAY	JUN	AVG
Thiruvananthapuram	Rose	1080	1096	1083	1069	1070	1078	1100	1100	1070	1070	1070	1093	1082
	Chempa	1100	1116	1106	1093	1100	1106	1125	1125	1100	1100	1100	1119	1108
	Local	1079	1070	1019	978	957	986	990	955	955	938	990	1060	998
Kollam	Jaya	950	1055	1050	1081	1078	1070	1123	1100	1017	1000	1016	1000	1045
	Falgunna	1188	1175	1165	1158	1160	1163	1186	1200	1200	1200	1208	1235	1187
Alappuzha	Punja	900	900	NT	1075	NT	NT	1008	975	950	919	950	NT	960
	Andra	1125	1150	1170	1173	1154	1144	1125	1125	1108	1100	1100	1125	1133
Kottayam	Culture	1007	1036	1034	1057	1038	1015	958	937	951	930	999	1053	1001
	Matta	1094	1060	1050	1050	1050	1050	1050	1050	1050	1050	1050	1063	1056
Ernakulam	Chempa	1175	1160	1150	1150	1150	1150	1150	1150	1125	1125	1125	1125	1145
	Matta	1125	1100	1050	1044	1070	1094	1100	1100	1050	1088	1100	1088	1084
Thrissur	Jaya	1088	1100	1050	1063	1110	1063	1050	1000	950	1000	1000	1000	1040
	Matta	1125	1030	988	994	1015	1081	1036	1000	967	1006	1050	1025	1026
Palakkad	Bodhana	1125	1100	1100	1113	1130	1150	1138	1150	1100	1100	1100	1100	1117
	ponni	NT	1100	1100	NT	NT	1150	1038	1150	1100	1100	1100	1100	1104
Kottayam	Jaya	1025	990	994	1000	1025	1031	981	950	875	894	920	944	969
	API	1075	1030	1030	1044	1060	1069	1038	975	900	918	945	981	1005

(Rice 2001-02 Contd....)

CENTRES	VARIETY	JUL	AUG	SEP	OCT	NOV	DEC	JAN	FEB	MAR	APR	MAY	JUN	AVG
Kozhikode	Jeerakasala	2000	1970	2000	2000	1950	1950	1900	1850	1800	1800	1800	1800	1902
	Palakkadmatta	1108	1114	1085	1070	1064	1080	1080	1080	1080	1080	1080	1080	1083
Kannur	Rose	1065	1076	1075	1078	1060	1030	1030	1030	1030	1030	1026	1020	1046
	Matta	1025	1002	963	970	970	1000	1000	980	960	970	982	995	985
Chittoor	Masoori	1150	1050	1088	1100	1110	1100	1100	1100	1100	1100	1110	1150	1105
	Jaya	983	984	985	985	984	980	978	970	910	915	922	928	960
Alathur	Ponmani	995	1000	1000	1050	1000	1000	1038	1000	930	930	950	950	987
	Matta	1015	1020	990	988	1012	1038	1040	1020	997	1010	1034	1095	1022
	Api	993	988	993	1003	1010	1003	1023	1000	987	965	996	1025	999
AVERAGE		1104	1095	1093	1095	1097	1103	1092	1052	1049	1051	1066	1086	1080

(Rice Contd....)

Rs/Qtl

YEAR: 2002-03

CENTRES	VARIETY	JUL	AUG	SEP	OCT	NOV	DEC	JAN	FEB	MAR	APR	MAY	JUN	AVG
Thiruvananthapuram	Rose	1100	1130	1150	1173	1196	1200	1204	1220	1190	1179	1175	1175	1174
	Chempa	1125	1155	1175	1194	1216	1220	1227	1240	1220	1205	1200	1200	1198
Kollam	Local	1155	1276	1257	1393	1387	1348	1330	1320	1305	1290	1311	1350	1310
	Jaya	1105	1080	1053	1088	1194	1225	1320	1340	1333	1340	1412	1463	1246
Alappuzha	Falgun	1266	1208	1173	1175	1210	1225	1212	1224	1221	1224	1208	1205	1213
	Punja	NT	NT	NT	NT	NT	NT	NT	NT	1092	NT	NT	NT	1092
Kottayam	Andra	1150	1150	1143	1128	1190	1200	1200	1225	1221	1230	1238	1242	1193
	Culture	1121	1167	1178	1165	1074	1053	1036	1038	1092	1035	1090	1133	1099
Ernakulam	Matta	1131	1175	1275	1275	1265	1256	1250	1200	1238	1238	1220	1200	1227
	Chempa	1125	1125	1150	1150	1170	1175	1175	1175	1344	1151	1158	1200	1175
Thrissur	Matta	1088	1200	1200	1213	1240	1225	1200	1225	1200	1200	1205	1250	1204
	Jaya	988	1061	1038	1056	1131	1133	1050	1075	1031	963	980	1100	1051
Palakkad	Matta	1092	1150	1113	1100	1405	1163	1105	1100	1100	NT	NT	NT	1148
	Bodhana	1100	1138	1113	1150	1240	1200	1170	1213	1150	1135	1190	1225	1169
	Jaya	958	1018	1044	1063	1150	1130	1090	1081	1025	1000	1070	1100	1061
	Api	983	1044	1069	1063	1150	1136	1095	1113	1025	1013	1025	1125	1070
	Ponni	1100	1150	1125	1125	1210	1200	1200	1200	1150	NT	NT	NT	1162

(Rice 2002-03 Contd....)

CENTRES	VARIETY	JUL	AUG	SEP	OCT	NOV	DEC	JAN	FEB	MAR	APR	MAY	JUN	AVG
Kozhikode	Jecrakasala	1800	1800	1925	1850	1900	1900	1900	1913	1950*	NT	NT	NT	1882
	PalakkadMatta	1138	1200	1213	1225	1225	1225	1225	1225	1225	1200	1210	1238	1212
Kannur	Rose	1040	1100	1100	1150	1150	1175	1150	1150	1150	1150	1187	1265	1147
	Matta	1040	1065	1138	1113	1110	1163	1130	1083	1012	1088	1104	1150	1100
Chittoor	Masoori	1150	1150	1150	1150	1170	1200	1200	1155	1100	1128	1150	1150	1154
	Jaya	953	1000	1005	1000	1040	1060	1092	1058	950	993	1050	NT	1018
Alathur	Ponmani	1000	1000	1000	1000	1020	1066	1070	1050	1000	1038	1063	1090	1033
	Matta	1100	1137	1173	1215	1192	1163	1206	1230	1212	1200	1202	1215	1187
	Api	993	1013	1027	1040	1078	1035	1042	1103	1135	1095	1110	1125	1066
	AVERAGE	1112	1148	1159	1170	1213	1203	1195	1198	1180	1141	1162	1200	1174

(Rice Contd....)

YEAR: 2003-04

Rs/Qtl

CENTRES	VARIETY	JUL	AUG	SEP	OCT	NOV	DEC	JAN	FEB	MAR	APR	MAY	JUN	AVG
Thiruvananthapuram	Rose	1198	1224	1280	1280	1295	1300	1308	1305	1300	1300	1325	1325	1287
	Champa	1235	1264	1320	1320	1325	1325	1333	1330	1325	1325	1350	1350	1317
Kollam	Local	1363	1492	1480	1480	1425	1405	1391	1350	1238	1360	1350	1350	1390
	Jaya	1505	1500	1500	1500	1500	1480	1445	1419	1319	1240	1218	1250	1406
Alappuzha	Falgunna	1269	1265	1223	1190	1150	1153	1194	1225	1215	1226	1260	1250	1218
	Punja	NT	NT	NT	NT	NT	NT	NT	1175	1175	NT	NT	NT	1175
Kottayam	Andra	1335	1343	1235	1200	1170	1150	1245	1265	1243	1232	1290	1315	1252
	Culture	1160	1192	1170	1152	1138	1125	1114	1105	1105	1142	1168	1160	1144
Ernakulam	Matta	1200	1200	1200	1200	1150	1150	1190	1238	1225	1225	1238	1275	1208
	Champa	1213	1250	1300	1300	1200	1200	1200	1200	1200	1200	1213	1250	1227
Kochi	Fine	NT	NT	NT	1200	1250	1200	1220	1200	1200	1238	1300	1338	1238
	common	NT	NT	NT	1100	1150	1100	1200	1150	1150	1188	1200	1256	1168
	Superfine	NT	NT	NT	NT	NT	NT	NT	NT	NT	NT	NT	NT	NT
Thrissur	Matta	1275	1285	1250	1250	1275	1300	1300	1263	1225	1235	1263	1275	1266
	Jaya	1100	1115	1111	1111	1111	1063	1050	1073	1038	1090	1156	1175	1099
	Jaya	NT	NT	NT	NT	NT	NT	1400	1400	1333	1216	1210	1240	1300
Palakkad	Bodhana	1250	1240	1250	1250	1225	1250	1250	1225	1200	1250	1300	1300	1249
	Jaya	1150	1150	1106	1125	1100	1075	1100	1075	1050	1100	1163	1200	1116
	API	1175	1175	1138	1150	1150	1150	1130	1069	1050	1100	1188	1200	1140

(Rice 2003-04 Contd....)

CENTRES	VARIETY	JUL	AUG	SEP	OCT	NOV	DEC	JAN	FEB	MAR	APR	MAY	JUN	AVG
Palakkad	Matta	1263	1240	1150	1200	1200	1233	1230	1200	1200	1230	1275	1300	1227
	Ponni	1256	1235	1200	1200	1188	1150	1150	1150	1150	1200	1250	1250	1198
Chittoor	Matta	1175	1228	1200	1135	1150	1225	1220	1200	1200	1200	1250	1300	1207
	Massori	1170	1200	1200	1200	1225	1213	NT	1200	1188	1180	1250	1250	1203
	Api	1110	1176	1150	1120	1200	NT	1180	1163	1138	1190	1163	1188	1167
Alathur	Ponnari	NT	NT	NT	1150	1150	1150	1150	1150	1150	1150	1150	1200	1156
	Vellaponni	NT	NT	NT	NT	1250	1250	1250	1200	1217	1267	1300	1300	1254
	Jaya	NT	NT	NT	NT	1150	1188	1180	1163	1113	1100	1075	1050	1127
	Massori	NT	1200	NT	NT	NT	1150	NT	NT	NT	NT	NT	NT	1175
	Matta	1215	1212	1215	1202	1215	1225	1218	1190	1230	1224	1240	1258	1220
Kozhikode	Jaya	NT	1193	1128	NT	1133	1124	1124	1060	1113	1128	1140	1158	1130
	Api	1120	1174	1125	1146	1140	1110	1132	1090	1120	1136	1145	1158	1133
	Bodhana	1180	1158	1113	1100	1128	1110	1076	1100	1100	1122	1210	1200	1133
	Coarse Matta	1255	1294	1280	1280	1280	1280	1280	1300	1300	1300	1320	1320	1291
Kannur	Jeerakasala	2200	2200	2150	2000	2013	2050	2050	2088	2075	2060	2138	2150	2098
	Rose	1250	1250	1250	1250	1250	1250	1250	1243	1220	1220	1227	1240	1242
AVERAGE		1271	1280	1263	1252	1237	1239	1244	1229	1215	1230	1260	1276	1245

MONTHLY AVERAGE MARKET WHOLESAL PRICE OF SUGAR

		Rs/QH												
YEAR: 1998-99		JUL	AUG	SEP	OCT	NOV	DEC	JAN	FEB	MAR	APR	MAY	JUN	AVG
CENTRES														
	Thiruvananthapuram	1518	1481	1453	1462	1469	1472	1474	1481	1501	1577	1507	1460	1488
	Kollam	1522	1490	1451	2907	1456	1466	1466	1469	1485	1551	1500	1453	1601
	Alappuzha	1510	1469	1448	1453	1446	1447	1449	1456	1480	1548	1479	1431	1468
	Kottayam	1501	1461	1437	1450	1443	1444	1455	1451	1483	1548	1479	1439	1466
	Ernakulam	1505	1470	1446	1449	1445	1449	1450	1455	1485	1547	1479	1448	1469
	Thrissur	1514	1415	1449	1466	1448	1459	1461	1471	1495	1554	1479	1449	1472
	Palakkad	1489	1446	1416	1446	1436	1434	1440	1447	1468	1540	1476	1433	1456
	Kozhikode	1512	1488	1446	1464	1443	1454	1448	1442	1473	1523	1494	1447	1470
	Kannur	1512	1503	1455	1472	1453	1458	1448	1445	1471	1513	1491	1450	1473
	AVERAGE	1509	1469	1445	1619	1449	1454	1455	1457	1482	1545	1487	1446	1485

(Sugar Contd..)

YEAR: 1999 -2000

CENTRES	Rs/Qtl												
	JUL	AUG	SEP	OCT	NOV	DEC	JAN	FEB	MAR	APR	MAY	JUN	AVG
Thiruvananthapuram	1449	1439	1431	1466	1485	1465	1462	1437	1519	1599	1534	1457	1479
Kollam	1446	1435	1421	1456	1471	1456	1444	1434	1527	1589	1524	1465	1472
Alappuzha	1431	1426	1411	1453	1456	1434	1430	1409	1498	1563	1499	1420	1453
Kottayam	1433	1415	1411	1448	1459	1433	1425	1408	1494	1580	1495	1426	1452
Ernakulam	1434	1420	1423	1479	1460	1434	1428	1408	1502	1563	1498	1430	1457
Thrissur	1436	1423	1412	1460	1452	1433	1427	1409	1503	1567	1501	1433	1455
Palakkad	1432	1411	1406	1439	1447	1416	-	-	-	-	-	-	1425
Kozhikode	1439	1435	1420	1468	1460	1439	-	-	-	-	-	-	1444
Kannur	1430	1439	1430	1474	1456	1435	-	-	-	-	-	-	1444
AVERAGE	1437	1427	1418	1460	1461	1438	1436	1418	1507	1577	1509	1439	1456

(Sugar Contd..)

YEAR: 2000-01

CENTRES	Rs/Qu												
	JUL	AUG	SEP	OCT	NOV	DEC	JAN	FEB	MAR	APR	MAY	JUN	AVG
Thiruvananthapuram	1525	1576	1587	1597	1506	1480	1468	1450	1507	1582	1539	1544	1530
Kollam	1528	1568	1567	1519	1494	1477	1465	1449	1508	1580	1538	1532	1519
Alappuzha	1511	1548	1528	1502	1463	1458	1434	1419	1474	1546	1503	1502	1491
Kottayam	1510	1549	1532	1485	1459	1445	1429	1413	1473	1553	1505	1503	1488
Ernakulam	1526	1565	1552	1503	1413	1468	1440	1419	1489	1566	1509	1506	1496
Thrissur	1526	1565	1547	1498	1478	1451	1437	1418	1481	1561	1515	1504	1498
Palakkad	-	-	-	-	-	-	1425	1425	1464	1534	1495	1493	1473
Kozhikode	-	-	-	-	-	-	1434	1425	1462	1541	1511	1498	1479
Kannur	-	-	-	-	-	-	1428	1400	1450	1536	1508	1492	1469
AVERAGE	1521	1562	1552	1517	1469	1463	1440	1424	1479	1555	1514	1508	1498

(Sugar Contd..)

Rs/Qtl

YEAR: 2001-02

CENTRES	JUL	AUG	SEP	OCT	NOV	DEC	JAN	FEB	MAR	APR	MAY	JUN	AVG
Thiruvananthapuram	1505	1462	1509	1513	1499	1485	1476	1495	1517	1488	1471	1435	1488
Kollam	1490	1460	1506	1501	1496	1471	1490	1518	1495	1488	1464	1433	1484
Alappuzha	1470	1437	1480	1466	1465	1444	1463	1488	1472	1455	1433	1401	1456
Kottayam	1461	1438	1480	1464	1463	1433	1458	1483	1470	1456	1425	1390	1452
Ernakulam	1466	1440	1493	1468	1472	1446	1469	1493	1477	1463	1439	1400	1461
Thrissur	1472	1456	1501	1475	1473	1449	1471	1483	1483	1462	1450	1401	1465
Palakkad	1456	1424	1469	1461	1448	1426	1444	NT	1462	1445	1422	1391	1441
Kozhikode	1473	1464	1488	1470	1463	1441	1455	NT	1462	1455	1431	1390	1454
Kannur	1476	1452	1490	1486	1473	1445	1450	NT	1470	1468	1452	1399	1460
AVERAGE	1474	1448	1491	1478	1472	1449	1464	1493	1479	1464	1443	1404	1463

(Sugar Contd.)

YEAR: 2002-03

Rs/Qtl

CENTRES	JUL	AUG	SEP	OCT	NOV	DEC	JAN	FEB	MAR	APR	MAY	JUN	AVG
Thiruvananthapuram	1419	1418	1420	1401	1350	1308	1311	1305	1290	1294	1302	1290	1342
Kollam	1420	1418	1418	1388	1334	1299	1310	1293	1281	1294	1298	1298	1338
Alappuzha	1394	1382	1384	1360	1302	1266	1279	1263	1253	1275	1264	1271	1308
Kottayam	1388	1380	1379	1354	1294	1261	1275	1254	1251	1269	1261	1269	1303
Ernakulam	1395	1390	1390	1364	1295	1268	1274	1263	1256	1320	1260	1263	1312
Thrissur	1393	1387	1386	1361	1298	1276	1287	1264	1250	1285	1264	1279	1311
Palakkad	1381	1371	1370	1350	1286	1569	1255	1244	1230	1253	1245	1254	1317
Kozhikode	1389	1380	1373	1354	1283	1253	1268	1248	1245	1273	1245	1276	1299
Kannur	1389	1385	1374	1345	1271	1250	1262	1231	1228	1256	1232	1280	1292
AVERAGE	1396	1390	1388	1364	1301	1306	1280	1263	1254	1280	1263	1276	1313

(Sugar Contd...)

Rs/Qtl

YEAR: 2003-04

CENTRES	JUL	AUG	SEP	OCT	NOV	DEC	JAN	FEB	MAR	APR	MAY	JUN	AVG
Thiruvananthapuram	1424	1519	1449	1429	1424	1389	1380	1541	1540	1597	1650	1644	1499
Kollam	1415	1485	1428	1424	1403	1355	1358	1521	1505	1575	1628	1628	1477
Alappuzha	1423	1462	1411	1397	1369	1324	1346	1506	1494	1570	1625	1616	1462
Kottayam	1400	1466	1407	1392	1365	1325	1356	1498	1504	1574	1610	1606	1459
Ernakulam	1443	1458	1418	1393	1373	1340	1359	1505	1495	1566	1613	1613	1465
Thrissur	1431	1472	1419	1411	1378	1340	1373	1519	1518	1584	1625	1623	1474
Palakkad	1388	1450	1395	1385	1364	1319	1337	1495	1479	1555	1596	1598	1447
Kozhikode	1375	1443	1398	1385	1351	1310	1352	1520	1489	1556	1595	1614	1449
Kannur	1409	1451	1393	1392	1363	1319	1340	1525	1475	1551	1592	1601	1451
Kochi	1440	1488	1423	1422	1400	1348	1374	1525	1515	1587	1638	1636	1483
AVERAGE	1415	1469	1414	1403	1379	1337	1358	1516	1501	1572	1617	1618	1467

MONTHLY AVERAGE MARKET WHOLESAL PRICE OF GINGER DRY

YEAR: 1998-99	CENTRES	Rs/Qt														
		JUL	AUG	SEP	OCT	NOV	DEC	JAN	FEB	MAR	APR	MAY	JUN	AVG		
	PATHANAMTHITTA															
	Adoor	NT	4900	4800	5025	NT	5750	5740	6100	7650	7275	NT	NT	5905		
	ALAPPUZHA															
	Alappuzha	5200	4975	5050	5380	5325	5600	5880	6600	7875	7500	6975	7433	6149		
	KOTTAYAM															
	Pala	4780	4600	NT	NT	NT	NT	NT	6133	7200	7080	6400	6975	6167		
	ERNAKULAM															
	Kochi	5060	4900	4975	5460	5600	5625	5900	5675	6850	7280	6475	7033	6048		
	Moovattupuzha	4750	4625	4650	5100	5288	5000	5300	6025	7200	6960	6800	7167	5671		
	Kothamangalam	5175	5000	5300	5420	5525	5567	5520	6025	7500	7340	7000	7500	6073		
	IDUKKI															
	Thodupuzha	4740	4675	4800	5440	5400	5150	5180	6133	6600	7500	7175	7650	5795		
	Kattappana	4760	4450	4400	4760	5350	5100	5100	5688	6375	6900	6875	7500	5603		
	PALAKKAD															
	Palakkad	4540	4500	4500	4830	5000	5000	5000	5300	6437	6750	6625	7000	5457		
	KOZHIKODE															
	Kozhikode	5000	5000	4867	5275	5325	5425	5400	5567	6863	6833	6388	7000	5745		
	KANNUR															
	Thalassery	4640	4600	4500	4820	4775	4625	4840	5267	7050	6933	6225	6325	5383		
	Thaliparambu	4700	4500	4475	4680	5000	5000	5040	5467	7175	7100	6250	6900	5524		
	AVERAGE	4850	4711	4752	5117	5259	5209	5316	5807	7011	7107	6653	7135	5776		

(Ginger Dry Contd..)

YEAR: 1999-2000	CENTRES	Rs/QH															
		JUL	AUG	SEP	OCT	NOV	DEC	JAN	FEB	MAR	APR	MAY	JUN	AVG			
	PATHANAMTHITTA																
	Adoor	NT	NT	NT	NT	7000	NT	6167	NT	6933	6800	NT	6725				
	ALAPPUZHA																
	Alappuzha	7400	NT	NT	NT	NT	NT	NT	NT	NT	NT	8400	7900				
	KOTTAYAM																
	Pala	NT	NT	NT	NT	NT	5800	5675	6270	6750	6475	6140	6185				
	ERNAKULAM																
	Kochi	7800	8167	8050	7780	7500	6925	6575	6920	7275	7125	7020	7395				
	Moovattupuzha	7500	7500	7500	7500	6700	6000	6000	6500	NT	NT	NT	6911				
	Kothamangalam	7500	7625	8000	NT	6800	6750	6250	6800	7050	6875	6700	7077				
	IDUKKI																
	Thodupuzha	7200	7300	7175	7000	6760	5875	5800	6420	6725	6325	6260	6655				
	Kattappana	7020	7025	7050	7000	7000	6500	5850	6340	6950	6375	6080	6683				
	PALAKKAD																
	Palakkad	7000	7188	7188	7000	6250	5425	5625	6600	6575	6000	6000	6467				
	KOZHIKODE																
	Kozhikode	6960	7000	6938	7000	6438	6250	6313	6550	6500	6500	5800	6599				
	KANNUR																
	Thalassery	7025	7075	7175	7150	6625	6200	5800	5725	5675	6200	6075	6485				
	Thaliparambu	7075	7100	7100	7080	6125	5700	5875	6540	6675	6200	5300	6498				
	AVERAGE	7248	7331	7353	7189	6720	6143	5994	6467	6711	6488	6378	6735				

(Ginger Dry Contd.)

YEAR: 2000-01

Rs/QH

CENTRES	JUL	AUG	SEP	OCT	NOV	DEC	JAN	FEB	MAR	APR	MAY	JUN	AVG
PATHANAMTHITTA													
Adoor	NT	NT	NT	NT	NT	5767	4900	4525	4500	NT	4100	NT	4758
ALAPPUZHA													
Alappuzha	8375	8100	8340	7775	7300	6680	6550	6400	6160	5775	5975	6260	6974
KOTTAYAM													
Pala	6000	NT	NT	NT	NT	NT	4900	4275	3900	3425	3350	3500	4193
ERNAKULAM													
Kochi	6575	6725	6680	6600	6900	6560	5575	4975	4440	4175	4300	4460	5664
Moovattupuzha	NT	NT	NT	NT	NT	NT	5150	4167	NT	NT	NT	4000	4439
Kothamangalam	NT	7500	6500	6500	6500	6000	5225	4300	4260	4025	4075	4540	5402
IDUKKI													
Thodupuzha	6300	6425	6400	6425	6050	5800	5075	4100	4000	3525	3600	3640	5112
Kattappana	5950	6267	6000	6200	6000	5840	5125	3900	4050	3300	3550	3700	5402
PALAKKAD													
Palakkad	5875	6000	6000	6000	5125	5300	4625	4000	4000	3650	3625	3660	4822
KOZHIKODE													
Kozhikode	5500	5575	5500	5500	5688	4640	4225	3775	3600	3225	3325	3500	4504
KANNUR													
Thalassery	6175	5500	5720	5675	5400	5500	4550	3725	3540	3150	3400	3440	4648
Thaliparambu	5200	5150	5040	5200	5200	5180	4325	3675	3640	3063	3150	3360	4349
AVERAGE	6217	6360	6242	6208	6018	5727	5019	4318	4190	3731	3859	4005	5071

(Ginger Dry Contd.)

YEAR: 2001-02

CENTRES	Rs/Qtl												
	JUL	AUG	SEP	OCT	NOV	DEC	JAN	FEB	MAR	APR	MAY	JUN	AVG
PATHANAMTHITTA													
Adoor	NT	NT	NT	NT	NT	3650	3350	3875	3800	4050	3940	3625	3756
ALAPPUZHA													
Alappuzha	6275	6200	6050	6000	5320	5000	4250	2850	2833	3400	3400	NT	4689
KOTTAYAM													
Pala	NT	NT	NT	NT	NT	NT	NT	NT	2433	2725	2760	2700	2655
ERNAKULAM													
Kochi	3850	3800	3800	3800	3560	3625	3450	3300	3300	3700	3660	3500	3007
Moovattupuzha	3000	3250	3500	3167	3100	3125	3125	2950	2700	3000	3040	3000	3083
Kothamangalam	5000	4500	4500	3032	NT	4200	3875	3100	3040	3300	3200	3125	3007
IDUKKI													
Thodupuzha	3425	3420	3350	3200	3180	3225	2950	2800	2730	3050	2860	2800	3080
Kattappana	3575	3420	3250	3000	3000	3000	2900	2750	2620	2925	2940	2700	3716
PALAKKAD													
Palakkad	3500	3500	3438	3288	3100	3100	2750	2500	2267	2550	2500	2300	2899
KOZHIKODE													
Kozhikode	3400	3280	3250	3075	3000	3000	2838	2500	2400	2600	2440	2200	2832
KANNUR													
Thalassery	3425	3200	3050	2975	2940	2900	3000	2200	2367	2475	2560	2350	2787
Thaliparambu	3300	3300	3225	3000	NT	NT	2500	2500	2300	2675	2700	2325	2783
AVERAGE	3875	3787	3741	3454	3400	3483	3181	2848	2733	3038	3000	2784	3250

YEAR: 2002-03

Rs/Qtl

(Ginger Dry Contd..)

CENTRES	JUL	AUG	SEP	OCT	NOV	DEC	JAN	FEB	MAR	APR	MAY	JUN	AVG
ALAPPUZHA													
Alappuzha	3900	4380	4275	4375	5020	4875	5120	5150	4637
PATHANAMTHITTA													
Adoor	NT	NT	3200	NT	NT	NT	..	4800	5500	5400	5220	5275	4899
KOTTAYAM													
Pala	NT	NT	NT	NT	NT	NT	4200	4100	4200	4225	4320	4400	4241
ERNAKULAM													
Kochi	3525	4180	3825	4225	4340	4850	4820	5000	5500	5500	5500	5500	4730
Moovattupuzha	3000	3120	3000	3375	3500	NT	4000	4200	4400	4400	4500	..	3750
Kothamangalam	3325	3960	3667	4250	NT	NT	4800	5000	5000	5000	5000	5125	4513
IDUKKI													
Thodupuzha	2800	2880	2875	3200	3520	3625	3980	4000	4275	4425	4680	4875	3761
Kattappana	2650	2500	2700	2700	2980	3375	3440	4325	4275	4025	4080	4200	3438
PALAKKAD													
Palakkad	2300	2500	2500	2750	3500	3500	3500	4000	4375	4500	4500	4125	3504
KOZHIKODE													
Kozhikode	2100	2425	2613	3425	3438	3500	3600	4500	4250	4250	4380	4475	3580
KANNUR													
Thalassery	2350	2325	2700	2900	2975	3225	3560	3975	4125	4425	4460	4325	3445
Thaliparambu	2200	2200	2350	2500	2500	NT	4067	4250	4275	4225	4225	4275	3370
AVERAGE	2815	3047	3064	3370	3530	3850	4099	4442	4561	4580	4624	4658	3912

(Ginger Dry Contd..)

YEAR: 2003-04

Rs/Oil

CENTRES	JUL	AUG	SEP	OCT	NOV	DEC	JAN	FEB	MAR	APR	MAY	JUN	AVG
ALAPPUZHA													
Alappuzha	5050	5900	6250	6220	6875	7675	9440	10050	12125	11900	14125	16375	9332
PATHANAMTHITTA													
Adoor	NT	NT	NT	NT	NT	NT	NT	NT	NT	NT	NT	NT	NT
KOTTAYAM													
Pala	NT	NT	NT	NT	NT	NT	8250	8025	10275	10820	12250	14667	10715
IDUKKI													
Kattappana	4200	4200	4200	4200	4200	4400	7800	7925	9700	10700	11875	12500	7158
Thodupuzha	5100	5360	5500	5460	6000	6863	8820	9125	10425	11400	13375	14500	8494
ERNAKULAM													
Kochi	5600	5980	5800	5600	5850	6750	9060	9375	10250	11900	13650	17000	8901
Moovattupuzha	NT	NT	NT	NT	NT	NT	10000	8750	11375	11000	12750	15875	11625
Kothamangalam	5000	5000	NT	NT	NT	NT	8000	9000	10750	11500	13500	15000	9719
PALAKKAD													
Palakkad	4250	4700	4725	4680	5000	6625	8100	8250	9750	10500	11750	12500	7569
KOZHIKODE													
Kozhikode	4225	4420	4800	4880	5000	5900	6400	7125	9375	10000	10000	10000	6844
KANNUR													
Thalassery	4200	4520	4625	4670	4600	5913	7810	7625	9875	10400	11333	13500	7423
Thaliparambu	4300	4500	4500	4500	4500	4500	7750	7425	8900	9500	10000	10000	6698
AVERAGE	4658	4953	5050	5026	5253	6078	8312	8425	10255	10875	12237	13811	8283

MONTHLY AVERAGE MARKET WHOLESAL PRICE OF PEPPER

YEAR: 1998-99	CENTRES	Rs/Qtl															
		JUL	AUG	SEP	OCT	NOV	DEC	JAN	FEB	MAR	APR	MAY	JUN	AVG			
	THIRUVANANTHAPURAM																
	Nedumangad	19750	20250	19625	19450	19125	19200	17500	16750	15700	15750	17000	18071				
	KOLLAM																
	Kadakkal	20500	21225	20200	19950	20000	20375	18600	17688	16820	16550	17850	18958				
	PATHANAMTHITTA																
	Adoor	20520	21025	20400	19940	19400	19575	18500	17200	16960	16750	17825	18798				
	ALAPPUZHA																
	Alappuzha	21080	21800	20800	20700	19900	20525	19820	17700	17500	17525	18800	19504				
	KOTTAYAM																
	Kottayam	NT	NT	NT	NT	NT	NT	NT	NT	NT	NT	NT	NT				
	Pala	19920	20450	19975	19860	19100	19700	18620	17075	17040	16525	17850	18616				
	IDUKKI																
	Kattappana	20620	21125	20300	20320	19625	20150	18860	17338	17260	17100	18300	19052				
	Thodupuzha	20380	20800	20050	20020	19225	19675	18760	17025	16880	16700	17825	18726				
	ERNAKULAM																
	Kochi (Ungarbled)	20840	21450	20500	20400	19925	20300	19100	17500	17320	17300	18300	19220				
	Kochi (Garbled)	21540	22150	21200	21100	20650	21000	19800	18200	18320	18300	19300	20015				
	Aluva	20180	21000	20350	19980	19525	19875	18440	17150	17340	16800	17800	18824				
	Moovattupuzha	20310	20638	19925	19960	19150	19900	18200	16988	17438	16250	17825	18615				
	Kothamangalam	20075	20850	20425	20220	19613	19667	18460	17325	17475	16625	17900	18828				

(Pepper Contd.)

Rs/Qtl

YEAR: 1998-99

CENTRES	JUL	AUG	SEP	OCT	NOV	DEC	JAN	FEB	MAR	APR	MAY	JUN	AVG
THRISSUR													
Kunnankulam	NT	NT	NT	NT	NT	NT	NT	NT	NT	NT	NT	NT	NT
Thrissur	20240	20725	20233	19925	19550	19950	18380	17150	17400	16875	16725	17725	18740
Irinjalakuda	20100	20525	20025	19840	19525	19950	18560	17000	17413	16860	16575	17775	18679
MALAPPURAM													
Manjeri	NT	NT	20000	NT	NT	18000	NT	NT	NT	17230	NT	NT	18410
KOZHIKODE													
Kozhikode-new	19760	20325	20000	20113	19500	19325	18050	16833	17175	16833	16550	17750	18518
Kozhikode-old	20800	21325	21000	20938	20500	20267	18375	17000	18233	17667	17550	18750	19367
KANNUR													
Thaliparambu	19980	20600	20113	20200	19800	19850	17900	16700	17175	16583	16650	17575	18594
Thalassery	19720	20150	19725	19900	19350	19300	16650	16700	17175	16500	16250	17325	18229
KASARAGOD													
Kanjangad	19780	20325	19925	19920	19725	19650	18740	17067	17125	16700	16225	17375	18546
Kasaragod	19850	20550	19750	19900	19625	19800	19500	16967	16750	16333	16250	17500	18565
AVERAGE	20297	20864	20215	20132	19641	19811	18541	17168	17464	16991	16748	17918	18818

(Pepper Contd..)

YEAR: 1999-2000

Rs/QH

CENTRES	JUL	AUG	SEP	OCT	NOV	DEC	JAN	FEB	MAR	APR	MAY	JUN	AVG
THIRUVANANTHAPURAM													
Nedumangad	16300	18875	19750	21700	23126	20400	19500	19750	19000	21375	20375	20000	20013
KOLLAM													
Kadakkal	17480	19650	20575	22640	24125	21000	20813	21250	20280	22450	21500	21060	21069
PATHANAMTHITTA													
Adoor	17360	19575	20425	22480	23325	20940	20800	20300	19560	22300	21000	20860	20744
ALAPPUZHA													
Alappuzha	18240	20480	21300	23480	24824	22580	21550	21000	20500	22875	22425	21660	21743
KOTTAYAM													
Kottayam	17420	19425	20500	22760	23375	20600	20000	20250	19500	22125	21125	20700	20648
Pala	17500	19725	20675	22780	24000	20800	20350	20450	19440	21925	21475	20860	20832
IDUKKI													
Kattappana	17890	20050	21025	23400	24275	21820	21025	20675	20090	22600	21800	20960	21301
Thodupuzha	17540	20075	20575	22600	24050	21260	20675	20500	19790	22250	21625	20620	20963
ERNAKULAM													
Kochi (Ungarbled)	18020	20425	21300	23580	24300	22300	21475	21050	20300	22875	22125	21280	21586
Kochi (Garbled)	19020	21425	22300	24580	25300	23300	22475	22050	21300	23875	23125	22280	22586
Aluva	17480	19550	20525	22740	23750	20660	20600	20575	19920	22625	21363	20900	20891
Moovattupuzha	17340	19425	20325	22460	23750	20700	20375	20313	19750	22375	21225	20850	20741
Kothamangalam	17720	19375	20250	20500	22700	21900	20000	20525	20020	22625	21600	21200	20701

(Pepper 1999-2000 Contd.)

CENTRES	JUL	AUG	SEP	OCT	NOV	DEC	JAN	FEB	MAR	APR	MAY	JUN	AVG
THRISSUR													
Kunnankulam	NT	NT	NT	22620	23675	20600	20275	20600	19840	22025	21325	20920	21320
Thrissur	17460	19800	20500	22560	23675	20740	20450	20650	19980	22300	21325	20940	20865
Irinjalakuda	17420	19550	20425	22840	23925	20860	20300	20700	19760	21975	21175	20680	20801
MALAPPURAM													
Manjeri	NT	NT	20000	NT	NT	NT	NT	NT	19200	NT	NT	NT	19600
KOZHIKODE													
Kozhikode-new	17580	19850	20475	22560	23167	21500	20750	20375	19670	22250	20875	20400	20788
Kozhikode-old	18580	20850	21500	23620	24000	22600	22000	21625	20740	23750	22750	22300	22026
KANNUR													
Thaliparambu	17420	19300	20367	22780	23775	21775	21025	20400	19960	22850	21750	20800	21017
Thalassery	17400	19533	20200	23600	23500	21400	21000	20550	19440	22425	21325	20750	20927
KASARAGOD													
Kanjanagad	17280	19500	20050	22100	23500	21200	20875	20625	19680	22125	20950	20600	20707
Kasaragod	17340	19600	20150	22280	23500	21000	20875	20550	19740	22333	20950	20560	20740
AVERAGE	17609	19811	20600	22757	23801	21361	20781	20671	19890	22469	21509	20963	21032

(Pepper Contd.)

YEAR: 2000-01

Rs/Qtl

CENTRES	JUL	AUG	SEP	OCT	NOV	DEC	JAN	FEB	MAR	APR	MAY	JUN	AVG
THIRUVANANTHAPURAM													
Nedumangad	18667	18983	16300	15250	11625	11600	8775	8650	8400	6313	8250	8280	11758
KOLLAM													
Kadakkal	20013	20000	16900	16625	12200	12500	12250	10188	9850	8300	9175	8960	13080
PATHANAMTHITTA													
Adoor	19725	19775	16800	16450	12225	11980	11850	9875	9660	8125	9100	8960	12877
ALAPPUZHA													
Alappuzha	20600	20575	18080	17575	13325	13660	12825	10950	10320	8825	10100	9660	13875
KOTTAYAM													
Kottayam	19625	20000	NT	NT	NT	NT	NT	NT	NT	NT	NT	NT	19813
Pala	19875	20100	17380	16175	12000	12300	11550	9075	9600	7700	9275	9060	12841
IDUKKI													
Kattappana	20163	20333	17440	16200	12525	12780	12275	10425	9675	8238	9675	9200	13244
Thodupuzha	19775	19800	17060	16250	12175	12600	11975	9925	9460	7950	9300	9000	12939
ERNAKULAM													
Kochi (Ungarbled)	20425	20325	17840	16600	12567	13400	12400	10650	9900	8450	9850	9320	13477
Kochi (Garbled)	21425	21325	18660	17400	13367	14200	13050	11150	10400	8950	10350	9820	14175
Aluva	19975	20100	17600	16300	12375	12540	12075	9900	9620	8100	9325	9060	13081
Moovattupuzha	19625	19675	16600	16500	12000	12200	12000	9875	9500	8188	9000	8950	12843
Kothamangalam	20000	20375	17875	16175	12250	12380	12450	9950	10000	8350	9175	9220	13183

(Pepper 2000-01 Contd..)

CENTRES	JUL	AUG	SEP	OCT	NOV	DEC	JAN	FEB	MAR	APR	MAY	JUN	AVG
THRISSUR													
Kunnankulam	19875	19900	17320	16413	12625	12580	12000	9950	9640	8000	9350	9000	13054
Thrissur	20125	20025	17380	16275	12550	12900	12200	10100	9640	8050	9525	9140	13159
Irinjalakuda	19675	19800	17220	16150	12550	12060	11875	9900	9420	8000	9225	8800	12890
MALAPPURAM													
Manjeri	NT	NT	NT	NT	NT	NT	NT	NT	NT	7500	NT	NT	7500
KOZHIKODE													
Kozhikode-new	19750	19575	16500	16125	12500	12300	11125	9800	9520	8075	9175	8980	12785
Kozhikode-old	21375	21075	18500	18250	14250	14100	13375	11250	11300	8950	10425	10090	14412
KANNUR													
Thaliparambu	20025	19825	17340	16200	12850	12920	11775	10200	9680	8125	9575	9220	13145
Thalassery	19833	19625	NT	15333	12325	13200	12025	10000	9480	7975	9350	8960	12555
KASARAGOD													
Kanjangad	19450	19750	16675	15750	12050	11820	11750	9825	9520	8175	9350	9010	12760
Kasaragod	19750	19650	16375	15925	12825	12300	11875	9850	9560	8050	9475	9160	12900
AVERAGE	19989	20027	17292	16377	12531	12682	11975	10071	9721	8109	9430	9136	13130

(Pepper Contd.)

YEAR: 2001-02

Rs/QH

CENTRES	JUL	AUG	SEP	OCT	NOV	DEC	JAN	FEB	MAR	APR	MAY	JUN	AVG
THIRUVANANTHAPURAM													
Nedumangad	7050	6550	6375	6213	5750	6500	5488	5300	5960	8188	7610	6875	6488
KOLLAM													
Kadakkal	8025	7460	6975	6975	6380	6925	6050	5675	6300	8750	8320	7525	7113
PATHANAMTHITTA													
Adoor	7900	7200	7075	6975	6500	7100	6125	6075	6250	8375	8380	7525	7123
ALAPPUZHA													
Alappuzha	8750	8100	7550	7675	7080	7825	6700	6363	6580	9300	8980	7925	7736
KOTTAYAM													
Kottayam	NT	NT	NT	NT	NT	NT	NT	NT	NT	NT	NT	NT	NT
Pala	7700	7460	7075	6967	6420	6950	6025	5325	6100	8275	8220	7500	7001
IDUKKI													
Kattappana	8075	7500	7250	7200	6680	7250	6100	5762	6350	8875	8200	7600	7237
Thodupuzha	8025	7480	7088	7125	6560	6975	6300	5763	6200	8650	8160	7550	7156
ERNAKULAM													
Kochi (Ungarbled)	8200	7600	7350	7350	6800	7450	6325	5600	6400	8800	8400	7750	7335
Kochi (Garbled)	8700	8100	7850	7850	7300	7950	6775	6000	6800	9200	8800	8150	7790
Aluva	7950	7440	7125	7075	6500	7000	6025	5500	6200	8500	8300	7525	7095
Moovattupuzha	7900	7520	6900	7000	6290	6625	6300	5800	6200	8500	8320	7375	7061
Kothamangalam	8425	7640	7150	7100	6640	6988	6025	5675	6160	8125	8190	7463	7132

(Pepper 2001-02 Contd..)

CENTRES	JUL	AUG	SEP	OCT	NOV	DEC	JAN	FEB	MAR	APR	MAY	JUN	AVG
THRISSUR													
Kunnankulam	8075	7625	6933	6900	6460	6750	6050	5875	6160	8650	8033	7450	7080
Thrissur	8050	7600	7050	7050	6440	6950	6025	5800	6220	8800	8100	7550	7136
Irinjalakuda	7750	7340	6900	6800	6260	6900	5850	5600	6020	8475	7860	7200	6913
MALAPPURAM													
Manjeri	8000	7000	NT	6700	NT	NT	NT	NT	6200	NT	NT	NT	6975
KOZHIKODE													
Kozhikode-new	8075	7460	7075	7000	6580	6925	6300	5600	6467	8925	8380	7650	7203
Kozhikode-old	8925	8460	7900	8050	7700	8350	6267	NT	NT	9550	9320	8500	8302
KANNUR													
Thaliparambu	8125	7520	6925	6975	6540	7075	6025	5500	6333	8825	8320	7625	7149
Thalassery	7875	7200	6850	6825	6320	7050	6075	5600	6467	8625	8140	7675	7059
KASARAGOD													
Kanjanagad	7963	7340	6800	6800	6300	6950	5925	5500	6200	8575	8100	7425	6990
Kasaragod	8125	7360	6925	7000	6380	7100	6250	5700	6333	8750	8280	7575	7148
AVERAGE	8076	7498	7101	7073	6566	7123	6143	5701	6281	8701	8305	7591	7190

(Pepper Contd.)

YEAR: 2002-03

Rs/Qtl

CENTRES	JUL	AUG	SEP	OCT	NOV	DEC	JAN	FEB	MAR	APR	MAY	JUN	AVG
THIRUVANANTHAPURAM													
Nedumangad	6625	7500	9038	9550	8640	7313	7140	7325	7000	6825	6380	7000	7528
KOLLAM													
Kadakkal	7300	8020	9133	9900	9300	7850	7930	7625	7500	7450	7025	-	8094
Puthur													
PATHANAMTHITTA													
Adoor	7350	8020	9375	10000	9300	8000	7800	7875	7550	7467	7200	7700	8136
ALAPPUZHA													
Alappuzha	7775	8520	9575	10250	9880	8900	8420	8250	8000	7775	7340	7850	8545
KOTTAYAM													
Kottayam	NT	NT	NT	NT	NT	NT	NT	NT	NT	NT	NT	NT	NT
Pala	7000	7840	8950	9700	9180	8150	7600	7575	7450	7200	6940	7575	7930
IDUKKI													
Kattiappana	7325	8120	9313	9975	9430	8275	7840	7713	7575	7350	7060	7575	8129
Thodupuzha	7300	8040	9125	9825	9390	8200	7760	7650	7525	7313	7080	7525	8061
ERNAKULAM													
Kochi (Ungarbled)	7425	8240	9325	9925	9560	8375	7960	7875	7725	7475	7240	7675	8233
Kochi(Garbled)	7825	8640	9725	10325	9960	8775	8360	8275	8150	7875	7600	7975	8624
Aluva	7125	8040	9175	9775	9320	8125				7325	7120	7475	8164
Moovattupuzha	7500	8060	9500	9375	9560	8425	7660	7600	7350	7367	7070	7375	8054
Kothamangalam	7050	8040	9000	9625	9340	8025	7860	8000	7625	7450	7100	7600	8060

(Pepper 2002-03 Contd..)

CENTRES	JUL	AUG	SEP	OCT	NOV	DEC	JAN	FEB	MAR	APR	MAY	JUN	AVG
THRISSUR													
Kunnankulam	7050	7880	8950	9650	9080	7925	7400	7750	7500	7325	NT	7525	8003
Thrissur	7225	7960	9076	9575	9220	8050	7560	7700	7625	7425	7220	7575	8018
Irinjalakuda	7025	7720	9025	9600	8920	7750	7560	7550	7475	7300	6960	7475	7863
MALAPPURAM													
Manjeri	NT	7930	NT	NT	8776	7800	7440	7675	7400	7275	7020	7600	7657
KOZHIKODE													
Kozhikode-new	7275	8075	9125	9700	9230	7800	7850	7700	7375	7425	7120	7700	8031
Kozhikode-old	8125	9100	10000	10500	10120	9000	9100	8875	8325	8525	8100	8550	9027
KANNUR													
Thaliparambu	7250	7975	9100	9850	9000	7825	7790	7600	7588	7600	7450	7875	8075
Thalassery	7400	8025	9175	9975	9090	7938	7680	7425	7475	7425	7180	7625	8034
KASARAGOD													
Kanjangad	7150	7925	9175	9775	9060	7900	7340	7475	7550	7350	7420	7625	7979
Kasaragod	7275	8150	9300	9950	9180	7975	7580	7600	7575	7525	7150	7750	8084
AVERAGE	7294	8083	9246	9848	9297	8108	7792	7767	7588	7457	7180	7649	8111

(Pepper Contd..)

YEAR: 2003-04

Rs./Qtl

CENTRES	JUL	AUG	SEP	OCT	NOV	DEC	JAN	FEB	MAR	APR	MAY	JUN	AVG
THIRUVANANTHAPURAM													
Nedumangad	7050	6400	6275	6280	5800	5875	6440	6250	6700	6820	6525	6325	6395
KOLLAM													
Kadakkal					5800	6375	6900	6750	7100	7260	7025	6850	6758
PATHANAMTHITTA													
Adoor	7575	7120	6875	6920	6275	6275	6860	6725	7050	7300	7075	6825	6906
ALAPPUZHA													
Alappuzha(Pala)	7900	7460	7225	7320	6675	6775	7300	6850	7050	7400	7225	7075	7188
KOTTAYAM													
Pala	7475	6960	6750	6720	6300	6275	6760	6375	7100	7140	6925	6825	6800
IDUKKI													
Kattappana	7550	7080	6900	6770	6288	6425	6920	6713	7175	7250	7138	6938	6929
Thodupuzha	7550	7080	6863	6860	6300	6388	6900	6700	7075	7250	7113	6863	6912
ERNAKULAM													
Kochi (Ungarbled)	7600	7220	7000	6920	6400	6550	7080	6850	7275	7360	7200	6950	7034
Kochi (Garbled)	7967	7520	7325	7220	6700	6850	7328	7150	7575	7660	7500	7250	7337
Aluva	7500	7080	6900	6820	6325	6375	6880	6675	7000	7375	7100	6850	6907
Kothamangalam	7600	7100	6850	6830	6425	6375	6950	6650	7050	7300	7100	6975	6934
Moovattupuzha	7450	7000	6725	6740	6325	6225	6840	6550	6975	7320	7013	7038	6850

(Pepper 2003-04 Contd..)

CENTRES	JUL	AUG	SEP	OCT	NOV	DEC	JAN	FEB	MAR	APR	MAY	JUN	AVG
THRISSUR													
Kunnamkulam	7415	7120	6950	6780	-	6400	6780	6475	6900	7160	7025	6800	6891
Thrissur	7550	7160	6925	6820	6400	6450	6900	6625	7038	7120	7125	7325	6953
Irinjalakuda	7400	6900	6700	6640	6175	6275	6800	6475	6850	7140	7000	6675	6753
MALAPPURAM													
Manjeri	7675	7150	6933	6840	6400	6500	6825	6600	7233	7180	7000	6817	6929
KOZHIKODE													
Kozhikode-Nadan/Old	7525	7220	6975	6800	6400	6475	6900	6625	7075	7300	7125	6825	6937
Kozhikode-New/Nadan	8325	8000	7725	7680	7467	7650	7940	7600	7925	7980	7950	7888	7844
KANNUR													
Thalassery (old)	-	-	-	-	-	-	6940	6725	-	-	-	-	6833
Thalassery (new)	7650	7020	6700	6540	6225	6425	6875	6575	6950	7280	7100	6850	6849
Thaliparambu	7750	7120	6888	6650	6375	6513	6875	6725	7125	7270	7300	6963	6963
Thaliparambu (old)	-	-	-	-	-	-	6990	6763	7125	7270	7300	6963	7069
KASARAGOD													
Kanjangad	7600	7040	6775	6640	6300	6300	6760	6625	6950	7220	7067	6800	6840
Kasaragod	7725	7120	6875	6800	6325	6575	6900	6750	7050	7360	7167	6950	6966
AVERAGE	7611	7137	6911	6838	6366	6469	6943	6700	7102	7292	7135	6940	6954

MONTHLY AVERAGE MARKET WHOLESale PRICE OF TURMERIC

YEAR: 1998-99	CENTRES	Rs/Qtl															
		JUL	AUG	SEP	OCT	NOV	DEC	JAN	FEB	MAR	APR	MAY	JUN	AVG			
	ALAPPUZHA																
	Alappuzha	4280	4000	3800	3980	4200	4133	4500	4200	3825	3500	3500	3575	3958			
	KOTTAYAM																
	Pala	5500	NT	NT	NT	NT	NT	NT	4667	4925	4370	4000	3650	4519			
	ERNAKULAM																
	Kochi	6080	6300	6400	6500	6150	6000	4825	4167	5150	4880	4375	4200	5419			
	Kothamangalam	NT	NT	NT	NT	NT	NT	4750	4663	4750	4500	4500	NT	4633			
	IDUKKI																
	Thodupuzha	NT	NT	NT	NT	NT	NT	4300	4550	4875	4520	4100	3925	4378			
	Kattappana	4960	5150	5500	5600	6000	6000	6000	4700	4550	4180	3600	3225	4955			
	KOZHIKODE																
	Kozhikode	5000	4725	4700	4500	4275	4400	4500	4000	4500	3767	3163	3325	4238			
	AVERAGE	5164	5044	5100	5145	5156	5133	4813	4421	4654	4245	3891	3650	4606			

(Turmeric Contd.)

YEAR: 1999-2000

Rs/Qtl

CENTRES	JUL	AUG	SEP	OCT	NOV	DEC	JAN	FEB	MAR	APR	MAY	JUN	AVG
ALAPPUZHA													
Alappuzha	3500	3500	3500	3540	3600	3640	3725	3525	3500	3350	3275	3000	3471
KOTTAYAM													
Pala	NT	NT	NT	NT	NT	NT	3300	3025	2960	3013	2913	2625	2973
ERNAKULAM													
Kochi	4320	4300	4300	4580	4575	4520	4150	4000	3420	3200	3225	3260	3988
Kothamangalam	NT	NT	NT	NT	NT	3500	3600	3475	3040	3150	3100	2933	3257
IDUKKI													
Thodupuzha	4020	3950	4050	4380	4450	4160	3725	3375	3040	3150	3100	2920	3693
Kattappana	3140	3375	3500	3600	3400	3520	3500	3200	3000	2825	2850	2620	3211
KOZHIKODE													
Kozhikode	3360	3250	3463	3460	3450	3320	3275	2250	2500	2369	2600	2460	2980
AVERAGE	3668	3675	3763	3912	3895	3777	3611	3264	3066	3008	3009	2831	3407

(Turmeric Contd..)

YEAR: 2000-01

Rs/QH

CENTRES	JUL	AUG	SEP	OCT	NOV	DEC	JAN	FEB	MAR	APR	MAY	JUN	AVG
ALAPPUZHA													
Alappuzha	2900	2625	2440	2300	2267	2280	2100	2100	2140	2050	1600	2020	2235
KOTTAYAM													
Pala	NT	NT	NT	NT	NT	NT	2700	2688	2080	1750	1825	2033	2179
ERNAKULAM													
Kochi	3150	3075	3000	3150	3275	3100	3100	3125	2840	2400	2100	2480	2900
Kothamangalam	NT	3000	3000	3000	3000	3000	3000	3000	2680	2300	2050	2370	2764
IDUKKI													
Thodupuzha	2800	2825	2780	2750	2800	2800	2800	2775	2360	2075	2050	2240	2588
Kattappana	2325	2433	2340	2500	2500	2500	2538	2350	2100	1500	1500	2020	2217
KOZHICODE													
Kozhikode	2350	2288	2060	2150	2100	1840	1800	1850	1840	1525	1500	1820	1927
AVERAGE	2705	2708	2603	2642	2657	2587	2577	2555	2291	1943	1804	2140	2414

(Turmeric Contd.)

CENTRES	YEAR: 2001-02												AVG	
	JUL	AUG	SEP	OCT	NOV	DEC	JAN	FEB	MAR	APR	MAY	JUN		Rs/QH
ALAPPUZHA														
Alappuzha	2100	1920	2000	2050	2120	2125	2150	2800	2600	2450	3440	3200	2413	
KOTTAYAM														
Pala	NT	NT	NT	NT	NT	NT	NT	NT	3567	3625	3600	3600	3598	
ERNAKULAM														
Kochi	2500	2500	2625	2525	2880	2925	2900	3500	3567	3775	4000	3950	3137	
Kothamangalam	2575	2340	2325	NT	NT	2650	NT	3100	3580	4000	3980	3425	3108	
IDUKKI														
Thodupuzha	2238	2200	2250	2550	2620	2550	2700	3025	3380	3750	3780	3675	2893	
Kattappana	2100	2000	1850	2000	2000	2000	2000	2825	3060	3150	3200	3200	2449	
KOZHIKODE														
Kozhikode	1700	1600	1600	1525	1780	1800	1875	2500	2967	3450	3200	3200	2266	
AVERAGE	2202	2093	2108	2130	2280	2342	2325	2958	3246	3457	3600	3464	2743	

(Turmeric Contd..)

YEAR: 2002-03

Rs/QH

CENTRES	JUL	AUG	SEP	OCT	NOV	DEC	JAN	FEB	MAR	APR	MAY	JUN	AVG
ALAPPUZHA													
Alappuzha	3200	3380	3300	3125	3380	3400	3560	3763	3900	3900	4200	3925	3586
KOTTAYAM													
Pala	NT	NT	NT	NT	NT	NT	4350	5350	4625	4500	4500	4500	4638
ERNAKULAM													
Kochi	3775	3840	4000	4025	4120	4550	4700	5375	5100	4950	4980	4800	4518
Kothamangalam	3567	NT	NT	NT	NT	NT	4433	5275	4800	4733	4900	4900	4658
IDUKKI													
Thodupuzha	3600	3600	3750	3850	4000	4300	4180	5225	4750	4675	4540	4525	4250
Kattappana	3200	3200	3200	3200	3240	3625	3860	3650	4025	4000	3800	3500	3542
KOZHIKODE													
Kozhikode	2933	2550	2575	2700	2840	3075	3440	4450	4275	4200	4240	4250	3461
AVERAGE	3379	3314	3365	3380	3516	3790	4075	4727	4496	4423	4451	4343	4010

(Turmeric Contd..)

YEAR: 2003-04

Rs/QH

CENTRES	JUL	AUG	SEP	OCT	NOV	DEC	JAN	FEB	MAR	APR	MAY	JUN	AVG
ALAPPUZHA													
Alappuzha	4150	4200	4200	4200	4125	4125	4240	4300	4375	4400	4400	4500	4268
KOTTAYAM													
Pala	NT	NT	NT	NT	NT	NT	4650	4900	5150	5300	5300	5200	5083
ERNAKULAM													
Kochi	4800	4840	5000	4840	4800	4863	4960	5150	5000	5450	5450	5533	5057
Kothamangalam	4900	NT	NT	NT	NT	NT	4733	4950	5225	5300	5300	5300	5101
IDUKKI													
Thodupuzha	4675	4680	4600	4620	4625	4625	4640	4875	5125	5200	5250	5150	4839
Kattappana	3500	3500	3500	3500	3500	3450	4160	4613	4500	4540	4525	4500	3982
KOZHIKODE													
Kozhikode	3900	3840	3800	3400	3675	4050	4362	4163	4650	4880	4700	4525	4162
KANNUR													
Thaliparambu	-	-	-	-	-	-	-	4067	4425	4600	4600	4800	4498
AVERAGE	4321	4212	4220	4112	4145	4223	4535	4627	4806	4959	4941	4939	4569

MONTHLY AVERAGE MARKET WHOLESAL PRICE OF RUBBER

YEAR: 1998-1999

Rs/Qtl

CENTRES	JUL	AUG	SEP	OCT	NOV	DEC	JAN	FEB	MAR	APR	MAY	JUN	AVG
THIRUVANANTHAPURAM													
Nedumangad	2790	2550	2575	2750	2563	2463	2330	2313	2413	2450	2788	2912	2575
KOLLAM													
Kadakkal	2635	2269	2253	2815	2313	2206	2065	2144	2371	2455	2669	2788	2415
Punalur	2643	2279	2261	2581	2315	2231	2070	2130	2331	2384	2731	2800	2396
KOTTAYAM													
Kottayam	2895	2719	2750	2925	2775	2575	2440	2388	2500	2580	2994	3106	2721
Pala	2810	2688	2725	2950	2775	2588	2410	2369	2494	2565	2931	3075	2698
IDUKKI													
Thodupuzha	2840	2694	2669	2860	2775	2538	2400	2344	2488	2545	2931	3050	2678
ERNAKULAM													
Kochi	2645	2288	2306	2580	2338	2238	2085	2163	2381	2445	2763	2769	2417
Moovattupuzha	2835	2688	2669	2880	2775	2581	2415	2356	2481	2505	2925	3050	2680
Kothamangalam	3100	2900	2763	3060	3050	2800	2540	2488	2638	2630	2913	3250	2844
KOZHIKODE													
Kozhikode	2900	2738	2683	3000	2763	2588	2430	2317	2513	2558	3000	3075	2714
KANNUR													
Thalassery	2910	2813	2750	3000	2875	2700	2490	2367	2563	2550	2925	3150	2758
Thaliparambu	2920	2750	2750	2930	2856	2675	2470	2342	2531	2600	3000	3063	2741
KASARAGOD													
Karjangad	2910	2800	2738	2880	2625	2700	2480	2333	2563	2600	2838	2963	2703
AVERAGE	2833	2629	2607	2862	2677	2529	2356	2312	2481	2528	2878	3004	2641

(Rubber Contd.)

YEAR: 1999-2000

CENTRES	Rs/Qtl												
	JUL.	AUG	SEP	OCT	NOV	DEC	JAN	FEB	MAR	APR	MAY	JUN	AVG
THIRUVANANTHAPURAM													
Nedumangad	2670	2563	2488	2545	2563	2440	2638	2675	2770	2950	3063	2960	2694
KOLLAM													
Kadakkal	2470	2413	2338	2445	2488	2365	2506	2588	2715	2838	2900	2790	2571
Punalur	2485	2431	2363	2460	2488	2335	2525	2656	2787	2969	3119	2952	2631
KOTTAYAM													
Kottayam	2970	2819	2638	2735	2738	2625	2756	2750	2830	3044	3181	3040	2846
Pala	2935	2831	2625	2715	2731	2595	2725	2738	2800	2988	3169	3020	2823
IDUKKI													
Thodupuzha	2910	2794	2575	2685	2675	2595	2700	2706	2760	2975	3119	2975	2789
ERNAKULAM													
Kochi	2490	2406	2319	2490	2525	2350	2588	2569	2715	2894	2931	2830	2592
Moovattupuzha	2890	2769	2588	2670	2675	2590	2719	2688	2785	2975	3150	2985	2790
Kothamangalam	3120	3150	2950	2840	2913	2760	3025	3025	2920	3038	3213	3110	3005
KOZHIKODE													
Kozhikode	2960	2775	2613	2720	2738	2644	2775	2763	2855	3044	3250	3100	2853
KANNUR													
Thalassery	2988	2913	2788	2788	2800	2650	2733	2775	2820	3025	3201	3100	2882
Thaliparambu	3000	2850	2675	2780	2788	2625	2756	2750	2825	3019	3175	3045	2857
KASARAGOD													
Kanjanagad	2913	2825	2675	2738	2775	2625	2688	2713	2790	2950	3150	3100	2829
AVERAGE	2832	2734	2587	2662	2684	2554	2703	2723	2798	2978	3125	3001	2782

(Rubber Contd.)

YEAR: 2000-01

Rs/Qtl

CENTRES	JUL	AUG	SEP	OCT	NOV	DEC	JAN	FEB	MAR	APR	MAY	JUN	AVG
THIRUVANANTHAPURAM													
Nedumangad	2833	2750	2700	2750	2563	2515	2513	2425	2440	2375	2763	2885	2626
KOLLAM													
Kadakkal	2606	2519	2520	2544	2200	2275	2369	2306	2395	2344	2631	2670	2448
Punalur	2831	2719	2670	2650	2544	2513	2456	2413	2415	2450	2831	2850	2612
KOTTAYAM													
Kottayam	2988	2906	2840	2831	2600	2550	2563	2481	2480	2513	2931	3000	2724
Pala	2981	2906	2820	2819	2600	2550	2550	2481	2470	2506	2913	3005	2717
IDUKKI													
Thodupuzha	2938	2850	2780	2775	2556	2480	2481	2375	2395	2431	2881	2925	2656
Kochi													
ERNAKULAM													
Moovattupuzha	2625	2594	2545	2531	2225	2275	2375	2325	2375	2263	2550	2580	2439
Kothamangalam	3075	3000	2975	2900	2875	2730	2813	2625	2560	2563	3125	3270	2876
KOZHIKODE													
Kozhikode	3038	2913	2860	2875	2625	2555	2556	2456	2480	2531	2963	3010	2739
KANNUR													
Thalassery	3031	2969	2880	2894	2644	2580	2550	2525	2470	2469	2950	3020	2749
Thaliparambu	2975	2894	2845	2844	2625	2550	2556	2463	2470	2463	2950	3010	2720
KASARAGOD													
Kanjanagad	3012	2963	2863	2825	2600	2540	2563	2450	2440	2488	2950	3050	2729
AVERAGE	2914	2835	2776	2773	2556	2509	2527	2447	2450	2452	2870	2941	2671

(Rubber Contd.)

YEAR: 2001-02

Rs/Qtl

CENTRES	JUL	AUG	SEP	OCT	NOV	DEC	JAN	FEB	MAR	APR	MAY	JUN	AVG
THIRUVANANTHAPURAM													
Nedumangad	2850	2870	2669	2650	2480	2281	2450	2663	2720	2975	3085	3488	2765
KOLLAM													
Kadakkal	2725	2780	2563	2631	2415	2213	2238	2625	2670	2838	2920	3238	2655
Punalur	2819	2840	2700	2633	2495	2313	2425	2575	2705	2913	3040	3375	2736
KOTTAYAM													
Kottayam	3075	3150	2990	3080	2712	2388	2500	2665	2785	2989	3155	3525	2918
Pala	3031	3100	2925	2800	2605	2394	2475	2650	2770	3013	3140	3500	2867
IDUKKI													
Thodupuzha	2925	3025	2717	NT	NT	NT	NT	NT	NT	3025	3210	3488	3065
ERNAKULAM													
Kochi	2603	2620	2575	2583	2325	2106	2263	2575	2650	2831	2880	3094	2597
Moovattupuzha	2909	3040	2825	2800	2570	2363	2425	2600	2750	2950	3075	3463	2819
Kothamangalam	3103	3340	2975	3040	2920	2625	2638	2931	3040	3238	3450	3900	3105
KOZHIKODE													
Kozhikode	3038	3140	2817	NT	NT	NT	2600	2900	2817	3063	3200	3625	3023
KANNUR													
Thalassery	3088	3150	2900	2838	2640	2450	2500	2725	2783	3063	3180	3575	2908
Thaliparambu	3075	3180	2875	2775	2595	2425	2494	2725	2816	3019	3175	3550	2892
KASARAGOD													
Kanjangad	3119	3195	2944	2831	2630	2456	2563	2825	2841	3113	3250	3663	2953
AVERAGE	2965	3033	2806	2787	2581	2365	2464	2705	2779	3002	3135	3499	2858

YEAR: 2002 - 03

Rs/QH

(Rubber Contd.)

CENTRES	JUL.	AUG.	SEP.	OCT.	NOV.	DEC.	JAN.	FEB.	MAR.	APR.	MAY.	JUN.	AVG.
THIRUVANANTHAPURAM													
Nedumangad	3325	3240	3381	3269	3310	3719	3920	4100	4150	4725	4550	4531	3852
KOLLAM													
Kadakkal	3175	3170	3283	3263	3240	3500	3876	4075	4150	4675	4600	4556	3797
Punalur	3231	3250	3381	3206	3275	3525	3895	4094	4219	4650	4556	4456	3812
KOTTAYAM													
Kottayam	3413	3360	3563	3363	3405	3863	4040	4207	4275	4838	4688	4550	3964
Pala	3400	3250	3563	3413	3335	3813	4050	4225	4238	4863	4650	4638	3953
IDUKKI													
Thodupuzha	3331	3250	3406	3300	3325	3744	3920	4131	4225	4688	4531	4519	3864
ERNAKULAM													
Kochi	2956	3040	3219	3100	3220	3538	3540	3731	3963	4625	4563	4613	3676
Moovattupuzha	3256	3210	3425	3294	3280	3713	3920	4138	4231	4700	4588	4538	3858
Kothamangalam	3675	3560	3667	3588	3570	4063	4290	4275	4413	4975	4783	4831	4141
KOZHIKODE													
Kozhikode	3500	3425	3588	3425	3481	3813	4020	4275	4338	4863	4630	4625	3999
KANNUR													
Thalassery	3438	3388	3600	3450	3419	3900	4120	4250	4288	4838	4735	4700	4011
Thaliparambu	3450	3363	3556	3350	3400	3913	4040	4225	4269	4875	4794	4613	3987
KASARAGOD													
Kanjanagad	3519	3438	3638	3400	3513	3981	4100	4294	4419	5000	4850	4625	4065
AVERAGE	3359	3303	3482	3340	3367	3776	3979	4155	4244	4793	4655	4600	3921

YEAR: 2003 - 04

(Rubber Contd.)

Rs/Oil

CENTRES	JUL	AUG	SEP	OCT	NOV	DEC	JAN	FEB	MAR	APR	MAY	JUN	AVG
THIRUVANANTHAPURAM													
Nedumangad	4025	4265	4450	4795	4875	4875	4800	4913	5206	5510	5638	5913	4939
KOLLAM													
Kadakkal	4044	4245	4469	4805	4850	4831	4815	4925	5200	5515	5625	5856	4932
Punalur	3894	4095	4356	4765	4825	4788	4830	4875	5138	5440	5556	5838	4867
KOTTAYAM													
Kottayam	4125	4300	4550	4835	4925	4913	4850	5019	5263	5585	5663	5950	4998
Pala	4158	4310	4500	4820	4913	4888	4860	4925	5300	5550	5763	6038	5000
IDUKKI													
Thodupuzha	4000	4180	4413	4705	4825	4825	4765	4888	5113	5420	5531	5819	4874
ERNAKULAM													
Kochi	3975	4175	4431	4720	4794	4694	4705	4800	5050	5390	5581	5856	4848
Moovattupuzha	4013	4190	4413	4740	4825	4813	4735	4863	5175	5400	5563	5850	4882
Kothamangalam	4303	4555	4744	5065	5213	5175	5110	5188	5500	5694	5775	6150	5211
KOZHIKODE													
Kozhikode	4475	4675	4850	5170	5388	5313	5145	5231	5538	5775	5869	6338	5314
KANNUR													
Thalassery	4225	4320	4600	4890	4888	4963	4930	4969	5231	5560	5767	6038	5032
Thaliparambu	4150	4360	4563	4870	4900	4900	4840	4975	5238	5590	5717	6006	5009
KASARAGOD													
Kanjangad	4258	4415	4650	4940	4925	4913	4930	4963	5225	5600	5817	5925	5045
AVERAGE	4128	4314	4538	4855	4934	4915	4870	4964	5244	5541	5682	5967	4996

MONTHLY AVERAGE MARKET WHOLESale PRICE OF BANANA

YEAR: 1998-99

Rs/Qtl

CENTRES	JUL	AUG	SEP	OCT	NOV	DEC	JAN	FEB	MAR	APR	MAY	JUN	AVG
THIRUVANANTHAPURAM													
Thiruvananthapuram	1350	1213	1233	1160	1025	1000	1130	1013	913	870	850	1175	1078
Neyyattinkara	1310	1275	1250	1070	913	988	1150	1138	1131	1120	1044	888	1106
Nedumangad	1410	1375	1250	1080	1013	963	1050	1125	975	820	850	1213	1094
KOLLAM													
Punahur	1320	1375	1300	930	888	925	990	938	825	730	938	1138	1025
Kadakkal	1100	1125	1175	1090	938	933	1010	1038	925	880	825	1000	1008
PATHANAMTHITTA													
Adoor	1100	1250	1200	1020	963	900	960	1075	900	720	913	1150	1015
Thiruvalla	1200	1363	1400	1080	950	925	1020	1000	788	730	925	1200	1048
ALAPPUZHA													
Chengannur	1150	1338	1338	970	875	844	970	1025	788	640	900	1038	990
KOTTAYAM													
Kottayam	1340	1500	1438	1160	919	900	1020	1063	825	800	988	1250	1100
Changanassery	1100	1338	1263	990	800	875	930	950	775	650	883	1088	975
Pala	-	-	-	1050	863	850	970	988	875	735	938	1213	942
ERNAKULAM													
Ernakulam	1300	1413	1375	1090	900	875	1080	1063	750	670	925	1200	1058
Aluva	1210	1463	1488	890	750	883	1030	1075	813	580	888	1188	1022
Moovattupuzha	1100	1300	1269	1100	963	825	890	1100	900	700	856	1038	1011
North-Paravoor	1200	1350	1163	815	738	825	980	925	603	585	913	1200	951

(Banana 1998-99 Contd.)

CENTRES	JUL	AUG	SEP	OCT	NOV	DEC	JAN	FEB	MAR	APR	MAY	JUN	AVG
IDUKKI													
Thodupuzha	-	1363	1275	1070	850	825	940	1013	875	780	950	1163	1009
THRISSUR													
Thrissur	1180	1325	1250	900	775	888	1070	975	725	630	963	1188	989
Kodungalloor	1310	1445	1188	910	813	913	1060	1013	688	640	970	1238	1016
Kunnamkulam	1440	1575	1567	1090	850	888	980	1056	774	640	888	1250	1083
Irinjalakuda	1180	1325	1225	960	838	838	930	975	863	620	1050	1188	999
PALAKKAD													
Palakkad	1160	1375	1175	763	788	800	990	967	750	667	863	1113	951
MALAPPURAM													
Manjeri	-	-	-	-	-	-	-	-	-	650	900	-	775
KOZHIKODE													
Kozhikode	1180	1300	1200	858	725	850	940	1017	825	783	975	1075	977
KANNUR													
Thalassery	1246	1363	1263	913	833	900	1012	1033	788	700	950	1188	1016
Kannur	1224	1375	1275	918	753	865	1010	1050	788	700	913	1125	1000
Thaliparambu	1136	1263	1188	838	763	850	998	1033	775	700	888	1050	957
KASARAGOD													
Kanjanagad	1190	1263	1225	875	850	900	1020	1050	875	750	988	1113	1008
Kasaragod	1180	1275	1200	850	775	875	980	967	750	700	875	975	942
AVERAGE	1235	1343	1276	979	856	852	1004	1025	827	721	922	1135	1010

YEAR: 1999-2000

Rs/Qtl

(Banana Contd.)

CENTRES	JUL	AUG	SEP	OCT	NOV	DEC	JAN	FEB	MAR	APR	MAY	JUN	AVG
THIRUVANANTHAPURAM													
Thiruvananthapuram	1030	975	925	1100	1125	1160	1050	963	910	1025	1125	1300	1057
Neyyattinkara	913	831	790	832	845	893	940	937	875	914	925	1003	892
Nedumangad	1260	1100	1013	1160	1200	1130	1213	1125	1013	1150	1175	1280	1152
KOLLAM													
Punalur	1050	975	900	980	995	1000	1000	900	890	913	1025	1180	984
Kadakkal	1150	1125	1013	1060	1100	1030	1038	1013	910	863	938	1220	1038
PATHANAMTHITTA													
Adoor	960	987	850	930	1000	930	1013	950	900	963	1050	1080	968
Thiruvalla	950	900	925	1010	975	980	1075	975	860	925	1125	1170	989
ALAPPUZHA													
Chengannur	920	944	825	990	950	930	1000	917	800	838	1013	1075	934
KOTTAYAM													
Kottayam	920	1175	1050	1110	1025	960	1063	1000	900	1000	1163	1220	1049
Changanassery	860	775	650	840	913	900	1025	917	738	863	1067	1110	888
Pala	1040	1013	938	995	975	880	963	975	865	950	1100	1210	992
ERNAKULAM													
Ernakulam	880	838	725	1100	863	930	1013	950	810	863	1163	1300	953
Aluva	930	988	838	950	925	910	963	940	775	818	988	1280	942
Moovattupuzha	1040	1050	925	980	913	770	925	950	840	813	938	1050	933
North-Paravoor	940	950	750	975	938	930	969	963	715	775	1088	1230	935

(Banana 1999-2000 Contd.)

CENTRES	JUL	AUG	SEP	OCT	NOV	DEC	JAN	FEB	MAR	APR	MAY	JUN	AVG
IDUKKI													
Thodupuzha	1015	875	813	890	925	900	950	988	890	913	1050	1240	954
THRISSUR													
Thrissur	950	1025	700	1000	825	850	1000	913	760	838	1100	1170	928
Kodungalloor	992	1088	720	1060	1000	940	988	1000	785	863	1113	1200	979
Kunnamkulam	1440	1575	1038	980	900	900	1025	925	800	838	1075	1220	1060
Irinjalakuda	1010	1025	700	910	938	880	1025	983	813	788	1125	1230	952
PALAKKAD													
Palakkad	760	913	725	910	850	880	913	900	760	813	1025	1000	871
MALAPPURAM													
Manjeri	NT	NT	725	NT	NT	NT	NT	NT	800	900	NT	NT	808
KOZHIKODE													
Kozhikode	990	1013	750	910	800	800	933	895	700	783	1069	1150	899
KANNUR													
Thalassery	975	950	825	888	900	930	1013	938	780	813	950	1263	935
Kannur	825	813	813	863	800	830	988	900	802	813	1113	1060	885
Thaliparambu	850	825	800	920	825	880	963	875	770	825	1088	1090	893
KASARAGOD													
Kanjangad	935	988	763	838	825	890	975	1000	938	900	1150	1188	949
Kasaragod	785	900	713	870	838	860	938	875	860	867	1000	1080	882
AVERAGE	977	986	829	965	932	921	999	951	831	880	1064	1170	958

(Banana Contd.)

YEAR: 2000-01

Rs/Qtl

CENTRES	JUL.	AUG	SEP	OCT	NOV	DEC	JAN	FEB	MAR	APR	MAY	JUN	AVG
THIRUVANANTHAPURAM													
Thiruvananthapuram	1250	1425	1660	1750	1675	1420	1200	1050	720	963	1100	1200	1284
Neyyattinkara	1178	1344	1490	1471	1450	1335	1231	1156	886	979	1196	1261	1248
Nedumangad	1425	1550	1750	1575	1575	1240	1250	1100	830	913	1100	1150	1288
KOLLAM													
Punalur	1213	1325	1613	1567	1550	1200	1213	1100	1050	1050	1050	1100	1253
Kadakkal	1238	1225	1520	1625	1575	1300	1213	1125	870	938	1025	1050	1225
PATHANAMTHITTA													
Adoor	1025	1200	1470	1350	1325	1160	1088	950	730	838	1125	980	1103
Thiruvalla	1088	1375	1580	1463	1413	1240	1175	1013	780	938	1150	1030	1187
ALAPPUZHA													
Chengannur	981	1206	1613	1313	1275	1080	1038	913	710	800	1075	930	1078
KOTTAYAM													
Kottayam	1125	1388	1650	1500	1388	1210	1163	1075	800	944	1175	1170	1216
Changanassery	1000	1263	1513	1400	1425	1170	1138	938	680	888	1113	990	1127
Pala	1200	1300	1510	1388	1225	1000	1000	900	770	838	1150	1060	1112
ERNAKULAM													
Ernakulam	1238	1488	1650	1438	1288	1110	1100	950	640	913	1175	1070	1172
Aluva	1213	1288	1350	1375	1338	1180	1050	1000	840	875	1088	1090	1141
Moovattupuzha	1050	1150	1200	1150	1150	1030	1000	1025	790	813	1050	1070	1040
North-Paravoor	1175	1350	1470	1400	1275	1090	1000	913	630	800	1050	1010	1097

(Banana 2000-01 Contd.)

CENTRES	JUL	AUG	SEP	OCT	NOV	DEC	JAN	FEB	MAR	APR	MAY	JUN	AVG
IDUKKI													
Thodupuzha	1125	1263	1360	1325	1275	1180	1250	1088	785	800	1100	1060	1134
THRISSUR													
Thrissur	1225	1388	1480	1388	1275	1050	1038	925	640	850	1100	1000	1113
Kodungalloor	1175	1388	1560	1388	1325	1060	1038	1000	725	799	1063	1000	1127
Kunnankulam	1300	1488	1650	1388	1363	1110	1063	975	720	838	1075	1060	1169
Irinjalakuda	1075	1288	1388	1313	1363	1050	1025	963	740	800	1025	950	1082
PALAKKAD													
Palakkad	1038	1338	1440	1388	1250	1020	938	875	675	775	1050	930	1060
MALAPPURAM													
Manjeri	NT	NT	NT	NT	NT	NT	NT	NT	NT	750	NT	NT	750
KOZHIKODE													
Kozhikode	1113	1281	1415	1306	1088	1085	888	863	685	750	1100	970	1045
KANNUR													
Thalassery	1213	1375	1540	1488	1363	1170	1100	938	750	844	1200	1100	1173
Kannur	1025	1288	1380	1413	1419	1140	988	900	710	800	1100	950	1093
Thaliparambu	1083	1263	1410	1300	1288	1080	963	875	700	825	1075	1000	1072
KASARAGOD													
Kanjangad	1200	1338	1380	1313	1300	1120	1088	975	820	825	1200	1060	1135
Kasaragod	1050	1250	1375	1475	1350	1200	1088	825	710	763	1113	940	1095
AVERAGE	1149	1327	1497	1417	1355	1149	1086	978	755	854	1105	1044	1142

YEAR: 2001-02

(Banana Contd.)

Rs/QH

CENTRES	JUL	AUG	SEP	OCT	NOV	DEC	JAN	FEB	MAR	APR	MAY	JUN	AVG
THIRUVANANTHAPURAM													
Thiruvananthapuram	1275	1520	1500	1575	1500	1000	900	1125	1120	1250	1200	1100	1255
Neyyattinkara	1113	1225	1425	1219	1212	1043	984	940	934	1180	1302	1008	1132
Nedumangad	1200	1460	1650	1450	1340	1000	825	875	880	1150	1160	1000	1166
KOLLAM													
Punalur	1050	1300	1300	1300	1130	963	950	963	1000	1025	1160	1075	1101
Kadakkal	1175	1235	1450	1225	1170	1025	963	906	870	981	1060	1063	1094
PATHANAMTHITTA													
Adoor	958	1230	1250	1150	1130	975	900	900	930	1000	1080	1025	1042
Thiruvalla	925	1230	1475	1288	1160	950	863	850	967	1000	1120	975	1067
ALAPPUZHA													
Chengannur	900	1130	1225	1163	990	794	800	813	845	863	920	934	948
KOTTAYAM													
Kottayam	1113	1340	1425	1288	1130	925	838	813	905	1025	1060	963	1069
Changanassery	883	1200	1275	1213	1110	850	844	856	895	963	1030	988	1009
Pala	944	1215	1294	1250	1080	875	863	888	913	956	1070	1031	1032
ERNAKULAM													
Ernakulam	963	1360	1338	1250	1060	900	875	825	870	925	1040	950	1030
Aluva	963	1180	1200	1163	1030	838	838	750	783	813	950	875	949
Moovattupuzha	1000	1160	1175	1100	1070	950	888	900	890	913	960	913	993
North-Paravoor	1038	1280	1175	1163	940	800	831	763	830	875	1030	975	975

(Banana 2001-02 Contd.)

CENTRES	JUL	AUG	SEP	OCT	NOV	DEC	JAN	FEB	MAR	APR	MAY	JUN	AVG
IDUKKI													
Thodupuzha	915	1080	1163	1100	1030	813	775	806	860	869	1020	825	938
THRISSUR													
Thrissur	975	1380	1188	1150	970	813	825	833	810	838	1030	975	982
Kodungalloor	1025	1330	1063	1250	1090	838	838	875	850	888	1060	1013	1010
Kunnamkulam	1175	1600	1363	1238	1100	913	900	881	855	831	1060	1125	1087
Irinjalakuda	938	1180	1063	1075	1010	800	738	838	870	913	1100	913	953
PALAKKAD													
Palakkad	888	1240	1250	1175	920	738	763	800	883	900	974	950	957
MALAPPURAM													
Manjeri	NF	1400	NT	NT	NT	NT	NT	NT	900	NT	NT	NT	1150
KOZHIKODE													
Kozhikode	931	1170	1150	1125	882	739	758	725	833	855	875	856	908
KANNUR													
Thalassery	975	1225	1200	1250	1050	850	850	850	833	913	1140	1050	1016
Kannur	863	1060	1163	1263	1020	813	825	800	800	850	990	775	935
Thaliparambu	938	1110	1186	1175	980	825	813	775	800	875	1005	863	945
KASARAGOD													
Kanjangad	1000	1200	1200	1200	1060	1025	900	800	900	900	1080	975	1020
Kasaragod	875	1120	1125	1125	1020	888	800	800	800	900	1010	850	943
AVERAGE	999	1256	1269	1219	1081	887	850	850	880	943	1055	965	1021

(Banana Contd.)

YEAR: 2002-03

Rs/Qtl

CENTRES	JUL	AUG	SEP	OCT	NOV	DEC	JAN	FEB	MAR	APR	MAY	JUN	AVG
THIRUVANANTHAPURAM													
Thiruvananthapuram	1250	1400	1200	1150	1140	1250	1240	1275	1200	1400	1160	1400	1255
Neyyattinkara	1015	1130	1096	1015	931	958	1128	1210	1194	1149	1050	1056	1078
Nedumangad	1150	1440	1200	1167	1000	1050	1220	1213	1150	1225	1110	1138	1172
KOLLAM													
Punalur	1175	1200	1000	1000	990	1000	1120	1100	1163	1175	1160	1200	1107
Kadakkal	1100	1150	1167	1038	1020	950	1080	1250	1163	1200	1180	1250	1129
PATHANAMTHITTA													
Adoor	895	990	938	925	900	950	1120	1213	1200	1283	1290	1300	1084
Thiruvalla	975	1140	1075	1000	1010	963	1220	1200	1138	1150	970	988	1069
ALAPPUZHA													
Chengannur	906	1075	975	894	870	863	1035	1133	1063	1042	863	938	971
KOTTAYAM													
Kottayam	1113	1270	988	975	940	850	1165	1288	1200	1250	1020	1150	1101
Changanassery	888	1045	1063	1000	950	863	1175	1155	1100	1125	770	950	1007
Pala	1006	1165	975	900	830	825	1090	1200	1113	1100	960	1025	1016
ERNAKULAM													
Ernakulam	1100	1200	950	975	950	975	1270	1138	1025	1000	850	925	1030
Aluva	980	1080	875	950	890	819	1160	1100	1038	1025	970	988	990
Moovattupuzha	913	980	875	850	850	819	930	1050	1050	1050	990	950	942
North-Paravoor	1088	1160	975	975	950	913	1260	1163	1038	875	800	1100	1025

(Banana 2002-03 Contd.)

CENTRES	JUL	AUG	SEP	OCT	NOV	DEC	JAN	FEB	MAR	APR	MAY	JUN	AVG
IDUKKI													
Thodupuzha	888	1030	863	819	860	763	1070	1125	1088	1050	820	925	942
THRISSUR													
Thrissur	1113	1160	963	1038	960	913	1280	1238	1075	1075	880	1063	1063
Kodungalloor	1050	1170	933	1075	980	988	1160	1200	1075	975	900	1000	1042
Kunnankulam	1238	1530	1175	1075	1050	975	1240	1250	1075	933	840	1200	1132
Irinjalakuda	888	1080	813	1009	810	713	1050	1138	1013	1038	810	925	941
PALAKKAD													
Palakkad	1013	1163	925	875	845	844	1140	1200	1100	850	830	925	976
MALAPPURAM													
Manjeri	NT	1000	NT	NT	747	718	975	1100	1000	1033	840	938	928
KOZHIKODE													
Kozhikode	940	1000	888	813	850	763	1081	1138	1001	938	700	838	913
KANNUR													
Thalassery	1100	1175	1013	950	930	900	1230	1275	1125	1125	970	1113	1076
Kannur	850	988	825	875	920	838	1150	1250	1038	988	800	838	947
Thaliparambu	900	1029	938	913	920	844	1155	1200	1050	1055	869	906	982
KASARAGOD													
Kanjangad	1000	1050	1025	1000	1000	1000	1140	1200	1175	1150	980	900	1052
Kasaragod	850	975	950	1000	960	900	1040	1100	1000	1025	990	938	977
AVERAGE	1014	1135	988	972	930	900	1140	1182	1095	1082	942	1031	1035

(Banana Contd.)

YEAR: 2003-04

Rs/Qtl

CENTRES
THIRUVANANTHAPURAM

	JUL	AUG	SEP	OCT	NOV	DEC	JAN	FEB	MAR	APR	MAY	JUN	AVG
Thiruvananthapuram	1450	1480	1625	1500	1575	1625	1740	1650	1500	1280	1600	2150	1598
Neyyattinkara	1244	1306	1344	1350	1481	1425	1345	1550	1369	1220	1225	1563	1369
Nedumangad	1450	1320	1600	1470	1475	1500	1500	1500	1400	1230	1400	1638	1457

KOLLAM

Punalur	1213	1215	1300	1220	1275	1413	1350	1375	1263	1270	1375	1575	1320
Kadakkal	1238	1190	1350	1220	1325	1350	1360	1400	1400	1370	1513	1725	1370

PATHANAMTHITTA

Adoor	1325	1286	1294	1140	1238	1238	1300	1400	1400	1400	1488	1650	1347
Thiruvalla	1325	1090	1438	1200	1350	1363	1500	1425	1213	1190	1500	1638	1353

ALAPPUZHA

Chengannur	992	970	1175	1030	1169	1225	1290	1250	1263	1044	1338	1475	1185
------------	-----	-----	------	------	------	------	------	------	------	------	------	------	------

KOTTAYAM

Kottayam	1050	1110	1475	1110	1275	1250	1440	1413	1213	1190	1488	1713	1311
Changanassery	1000	1060	1363	1140	1313	1363	1460	1425	1138	1138	1444	1588	1286
Pala	1113	1155	1325	1020	1200	1200	1310	1413	1188	1195	1488	1600	1267

ERNAKULAM

Ernakulam	1063	1140	1225	1110	1425	1425	1490	1375	1075	1210	1513	1713	1314
Aluva	1025	1020	1300	1030	1263	1200	1180	1238	975	1150	1325	1500	1184
Moovattupuzha	1025	1070	1119	930	1019	1100	1270	1300	1150	1120	1213	1500	1151
North-Paravoor	1150	1120	1263	1063	1363	1350	1420	1313	1100	1130	1413	1550	1270

(Banana 2003-04 Contd.)

CENTRES	JUL	AUG	SEP	OCT	NOV	DEC	JAN	FEB	MAR	APR	MAY	JUN	AVG
IDUKKI													
Thodupuzha	903	1060	1238	940	1075	1131	1255	1238	1150	1165	1413	1506	1178
THRISSUR													
Thrissur	1175	1180	1400	1130	1388	1400	1480	1338	1025	1150	1513	1650	1319
Kodungalloor	1088	1180	1325	1160	1338	1325	1440	1338	1113	1100	1400	1588	1283
Kunnamkulam	1288	1330	1613	1230	1363	1413	1450	1350	1131	1160	1450	1613	1366
Irinjalakuda	988	970	1288	1020	1225	1150	1230	1200	1025	1113	1463	1538	1184
PALAKKAD													
Palakkad	981	1060	1263	1000	1250	1243	1265	1350	1100	1220	1488	1513	1228
MALAPPURAM													
Manjeri	988	1050	1217	970	1175	1167	1220	1150	1113	1180	1445	1453	1177
KOZHIKODE													
Kozhikode	1000	1025	1175	998	1244	1206	1240	1219	981	1110	1388	1400	1166
KANNUR													
Thalassery	1125	1140	1375	1210	1375	1363	1394	1363	1125	1210	1583	1563	1319
Kannur	850	970	1225	1070	1350	1325	1330	1188	1000	1130	1483	1400	1193
Thaliparambu	950	1010	1256	1085	1300	1313	1340	1225	1044	1150	1408	1400	1207
KASARAGOD													
Kanjangad	1075	1070	1300	1220	1375	1500	1500	1425	1238	1320	1517	1588	1344
Kasaragod	925	1080	1225	1100	1325	1300	1320	1250	1025	1160	1333	1500	1212
AVERAGE	1109	1131	1325	1131	1305	1317	1372	1345	1168	1189	1436	1582	1284

MONTHLY AVERAGE MARKET WHOLESALE PRICES OF LEMON GRASS OIL

YEAR: 1998-99

CENTRES	Rs/Qtl												
	JUL	AUG	SEP	OCT	NOV	DEC	JAN	FEB	MAR	APR	MAY	JUN	AVG
ERNAKULAM													
Aluva	43400	43000	45000	47000	46500	-	47000	47000	46750	46540	47000	46750	45995
Moovattupuzha													
Kothamangalam	45000	46125	48250	47500	46625	-	48000	49500	48000	46000	45000	45000	46818
Kochi	44000	44500	44000	44600	46500	-	46500	46500	46500	45800	45500	45500	46406
KANNUR													
Thalassery	43000	45000	45750	47000	47000	47000	47000	47000	47125	47500	47500	46875	47167
AVERAGE	44150	44656	45750	46525	46656	47000	47125	47500	47094	46460	46250	46031	46596

YEAR: 1999-2000

CENTRES	Rs/Qtl												
	JUL	AUG	SEP	OCT	NOV	DEC	JAN	FEB	MAR	APR	MAY	JUN	AVG
ERNAKULAM													
Aluva	46000	46000	46000	46000	46000	46000	46000	46000	46000	46000	46000	46000	46000
Moovattupuzha													
Kothamangalam	45000	44000	44500	45600	46000	46500	46625	47375	47500	45500	46500	47400	46042
Kochi	45000	45000	45000	45000	45000	45000	45000	45000	45000	45000	45000	45000	45000
KANNUR													
Thalassery	46000	44000	44750	45625	46000	46000	46000	46000	46000	46000	46000	46000	45698
AVERAGE	45500	44750	45063	45556	45750	45875	45906	46094	46125	45625	45875	46100	45685

(Lemon Grass Oil Contd...)

YEAR: 2000-01

Rs/Qtl

CENTRES

ERNAKULAM

	JUL	AUG	SEP	OCT	NOV	DEC	JAN	FEB	MAR	APR	MAY	JUN	AVG
Aluva	45000	45000	45000	45000	45000	45000	45000	45000	44000	40000	40000	40000	43667
Kochi	46000	46000	46000	46000	47000	47000	46250	46000	45600	45500	46000	46000	46113
Kothamangalam	45875	46000	45250	44250	44125	43900	44000	42500	43100	44000	42625	42300	43994

KANNUR

	JUL	AUG	SEP	OCT	NOV	DEC	JAN	FEB	MAR	APR	MAY	JUN	AVG
Thalassery	45500	45000	45000	45000	45000	44000	43000	43000	42600	40000	40000	41000	43258
AVERAGE	45594	45500	45313	45063	45281	44975	44563	44125	43825	42375	42156	42325	44258

YEAR: 2001-02

Rs/Qtl

CENTRES

ERNAKULAM

	JUL	AUG	SEP	OCT	NOV	DEC	JAN	FEB	MAR	APR	MAY	JUN	AVG
Aluva	40000	40000	40000	40000	40000	41000	41000	41000	41600	42000	42000	42000	40883
Kochi	43500	42000	42000	42000	41600	41000	42000	42000	42000	42000	42000	42000	42008
Kothamangalam	41500	41200	40500	41250	41500	42500	43000	45000	42000	42500	42900	43000	42238

KANNUR

	JUL	AUG	SEP	OCT	NOV	DEC	JAN	FEB	MAR	APR	MAY	JUN	AVG
Thalassery	40250	40000	40000	40000	40000	41000	41500	41500	41500	41500	41300	41000	40796
AVERAGE	41313	40800	40625	40813	40775	41375	41875	42375	41775	42000	42050	42000	41481

(Lemon Grass Oil Contd...)

YEAR: 2002-03

Rs/Oil

CENTRES	JUL	AUG	SEP	OCT	NOV	DEC	JAN	FEB	MAR	APR	MAY	JUN	AVG
ERNAKULAM													
Aluva	42000	42000	42000	42000	42000	42000	42000	42000	42000	42000	42000	42000	42000
Moovattupuzha													
Kothamangalam	43000	43200	45000	44750	44400	45000	44400	44000	44000	44750	44750	42500	44146
Kochi	42000	42000	42000	42000	42000	42000	42300	42500	42750	43000	42200	42000	42229
KANNUR													
Thalassery	41000	41250	42000	42000	42000	42750	43000	43000	43000	43000	42400	40000	42117
AVERAGE	42000	42113	42750	42688	42600	42938	43133	43000	43000	43250	43050	41500	42623

YEAR: 2003-04

Rs/Oil

CENTRES	JUL	AUG	SEP	OCT	NOV	DEC	JAN	FEB	MAR	APR	MAY	JUN	AVG
ERNAKULAM													
Aluva	42000	42000	42000	42000	42000	42000	42000	42000	42000	42000	42000	42000	42000
Moovattupuzha													
Kothamangalam	41025	41500	42000	41600	39667	40000	37300	37625	37000	37000	37000	37000	39110
Kochi	42000	42000	42000	42000	42000	42000	38000	37500	35500	37000	42750	42000	40396
KANNUR													
Thalassery	40000	40000	40000	39800	39000	38500	38000	38000	37250	34900	32500	32500	37538
AVERAGE	41406	41375	41500	41350	40667	40625	38825	38781	37938	37725	38563	38375	39761

MONTHLY AVERAGE MARKET WHOLESALe PRICES OF GROUND NUT

YEAR: 1998-99

CENTRES	Rs/Qtl												
	JUL	AUG	SEP	OCT	NOV	DEC	JAN	FEB	MAR	APR	MAY	JUN	AVG
ERNAKULAM				2400	2200	2200	2200		2200	2000	1950	2150	2163
Ernakulam				2400	2200	2200	2200		2200	2000	1950	2150	2163
PALAKKAD													
Palakkad	2507	2817	2184	2840	2326	2306	2328	2383	2152	2138	2170	2185	2361
Chittoor	2448	2575	2800	2900	2700	2533	2460	2500	2450	2400	2400	2325	2541
AVERAGE	2478	2696	2492	2713	2409	2346	2329	2442	2267	2179	2173	2220	2379

YEAR: 1999-2000

CENTRES	Rs/Qtl												
	JUL	AUG	SEP	OCT	NOV	DEC	JAN	FEB	MAR	APR	MAY	JUN	AVG
ERNAKULAM													
Ernakulam	2080	1975	2075	1920	1925	1980	1950	2000	2000	2000	2000	2600	2340
PALAKKAD													
Palakkad	2114	2094	2320	2267	2267	2267	2291	2334	2220	2197	2188	2494	2304
Chittoor	2300	2300	2325	2500	2450	2380	2300	2300	2300	2275	2200	2380	2340
AVERAGE	2097	2035	2198	2094	2096	2124	2121	2167	2110	2099	2094	2547	2210

(Groundnut Contd...)

YEAR: 2000-01

Rs/Qtl

CENTRES	JUL	AUG	SEP	OCT	NOV	DEC	JAN	FEB	MAR	APR	MAY	JUN	AVG
ERANAKULAM													
Eranakulam	2075	2300	2300	1975	2300	2300	2300	2150	1840	1788	1875	1940	2008
PALAKKAD													
Palakkad	2509	2552	2480	2467	2276	2133	2158	2140	2088	2047	2153	2462	2516
Chittoor	2500	2450	2400	2325	2300	2360	2300	2300	2260	2200	2100	2360	2430
AVERAGE	2381	2434	2393	2256	2292	2264	2253	2197	2063	2012	2043	2254	2237

YEAR: 2001-02

Rs/Qtl

CENTRES	JUL	AUG	SEP	OCT	NOV	DEC	JAN	FEB	MAR	APR	MAY	JUN	AVG
ERANAKULAM													
Eranakulam	1800	2020	2125	2038	NT	2000	2000	2000	2000	2200	2200	2233	2017
PALAKKAD													
Palakkad	2420	2409	2325	2410	2465	2290	2267	2267	2347	2508	2622	-	2420
Chittoor	2400	2400	2300	2300	2480	2400	2300	2300	2500	2500	2540	-	2400
AVERAGE	2207	2276	2250	2249	2473	2230	2189	2189	2282	2403	2454	2233	2398

Groundnut Comtd...)

YEAR: 2002-03

CENTRES	Rs/Qtl												
	JUL	AUG	SEP	OCT	NOV	DEC	JAN	FEB	MAR	APR	MAY	JUN	AVG
ERANAKULAM													
Eranakulam	2300	2300	2375	2600	2600	2600	2400	2450	2500	2500	2400	2525	2483
PALAKKAD													
Palakkad	2413	2874	2999	2901	2987	2966	2967	3000	3000	3000	3000	3000	2980
Chittoor	2800	2800	3000	3000	3000	3000	3000	3100	3125	3120	3120	3100	3061
AVERAGE	2504	2658	3000	2759	2862	2855	2789	2850	2867	2875	2840	2875	2806

YEAR: 2003-04

CENTRES	Rs/Qtl												
	JUL	AUG	SEP	OCT	NOV	DEC	JAN	FEB	MAR	APR	MAY	JUN	AVG
ERANAKULAM													
Eranakulam	2875	2660	2625	2600	2575	2600	2600	2600	2575	2600	2600	2600	2626
KOTTAYAM													
Kottayam				3100			3100	3075	3038	3020	3100	3100	3072
PALAKKAD													
Palakkad	3000	2934	2668	2907	2900	2900	2900	2900	2800	2765	2900	2800	2865
Chittoor	3200	3120	3025	3000	3000	2975	2920	3000	3000	3000	3000	3005	3020
KOZHIKODE													
Kozhikode	-	-	-	-	-	-	2970	2768	2725	2750	2920	2813	2824
Vadakara	-	-	-	-	-	-	3150	3150	2917	2800	2833	2938	2965
AVERAGE	3025	2905	2773	2836	2825	2825	2940	2916	2843	2823	2892	2876	2876

MONTHLY AVERAGE MARKET WHOLESALe PRICES OF PINEAPPLE

Rs/Qtl

YEAR: 1998-99

CENTRES	JUL	AUG	SEP	OCT	NOV	DEC	JAN	FEB	MAR	APR	MAY	JUN	AVG
THIRUVANANTHAPURAM													
Thiruvananthapuram	-	-	-	-	-	-	940	900	800	960	588	513	784
KOLLAM													
Punalur	1000	1400	-	1300	825	800	1200	788	775	630	575	488	889
KOTTAYAM													
Kottayam	-	-	-	-	-	-	860	850	800	880	675	475	757
ERANAKULAM													
Eranakulam	-	-	-	-	-	-	860	775	788	890	638	575	754
THRISSUR													
Thrissur	-	-	-	-	-	-	1020	850	775	940	625	575	798
KOZHIKODE													
Kozhikode	730	875	825	833	775	733	879	800	800	900	1000	525	806
AVERAGE	865	1138	825	1067	800	767	960	827	790	867	684	525	809

(Pineapple Contd...)

YEAR: 1999-2000

CENTRES	Rs/QH												
	JUL	AUG	SEP	OCT	NOV	DEC	JAN	FEB	MAR	APR	MAY	JUN	AVG
THIRUVANANTHAPURAM													
Thiruvananthapuram	900	838	938	750	600	800	563	763	950	688	863	1040	808
KOLLAM													
Punalur	610	938	1350	950	900	794	913	825	890	888	638	620	860
KOTTAYAM													
Kottayam	730	838	863	730	538	650	488	550	680	500	575	610	646
ERANAKULAM													
Eranakulam	780	763	900	660	513	710	538	750	850	738	825	930	746
THRISSUR													
Thrissur	880	875	1000	760	613	820	600	775	920	800	1025	1080	846
KOZHIKODE													
Kozhikode	680	850	900	780	667	800	-	-	-	-	-	-	780
AVERAGE	763	850	992	772	639	762	620	733	858	723	785	856	781

(Pineapple Contd...)

YEAR: 2000-01

CENTRES	Rs/Oil												
	JUL	AUG	SEP	OCT	NOV	DEC	JAN	FEB	MAR	APR	MAY	JUN	AVG
THIRUVANANTHAPURAM													
Thiruvananthapuram	850	875	710	613	913	750	900	875	850	1050	1025	1100	876
KOLLAM													
Punalur	838	800	1000	NT	900	800	688	750	770	825	575	530	771
KOTTAYAM													
Kottayam	550	550	560	513	663	670	675	688	690	900	713	660	653
ERANAKULAM													
Eranakulam	713	725	640	575	675	720	725	775	770	1000	863	860	753
THRISSUR													
Thrissur	850	863	720	650	838	750	850	850	860	1175	925	960	858
KOZHIKODE													
Kozhikode													
AVERAGE	760	763	726	588	798	738	768	788	788	990	820	822	782

(Pineapple Contd...)

YEAR: 2001-02	Rs/Qtl												
CENTRES	JUL	AUG	SEP	OCT	NOV	DEC	JAN	FEB	MAR	APR	MAY	JUN	AVG
THIRUVANANTHAPURAM													
Thiruvananthapuram	1050	1140	1033	1150	1180	875	713	713	980	1375	1180	1400	1066
KOLLAM													
Punalur	688	1000	900	NT	875	900	750	900	900	1133	800	700	868
KOTTAYAM													
Kottayam	738	870	775	863	1040	700	663	650	900	1088	780	1050	843
ERANAKULAM													
Eranakulam	900	1060	775	900	960	700	588	663	880	1075	890	1100	874
THRISSUR													
Thrissur	1025	1080	900	1000	1100	825	725	883	1180	1263	1060	1400	1037
KOZHIKODE													
Kozhikode	880	1030	877	978	1031	800	688	762	968	1187	942	1130	939
AVERAGE													

(Pineapple Contd...)

YEAR: 2002-03

CENTRES	Rs/QH												
	JUL	AUG	SEP	OCT	NOV	DEC	JAN	FEB	MAR	APR	MAY	JUN	AVG
THIRUVANANTHAPURAM													
Thiruvananthapuram	1350	810	1175	1000	820	875	710	1150	950	1025	740	1275	990
KOLLAM													
Punalur	1033	1200	900	NT	1000	933	1000	900	875	1000	600	525	906
KOTTAYAM													
Kottayam	1000	770	900	925	770	800	650	900	888	775	560	825	814
ERANAKULAM													
Eranakulam	1100	700	975	838	720	738	560	900	725	800	540	825	785
THRISSUR													
Thrissur	1275	800	1225	1075	820	850	640	1100	900	900	660	1100	945
KOZHIKODE													
Kozhikode													
AVERAGE	1152	856	1035	960	826	839	712	990	868	900	620	910	888

(Pineapple Contd...)

CENTRES	YEAR: 2003-04												AVG			
	JUL	AUG	SEP	OCT	NOV	DEC	JAN	FEB	MAR	APR	MAY	JUN				
THIRUVANANTHAPURAM																
Thiruvananthapuram	825	880	925	790	875	775	840	1000	975	1340	950	1100	950	1100	950	950
KOLLAM																
Punalur	650	900	NT	825	867	813	810	867	663	1130	563	463	563	463	790	790
KOTTAYAM																
Kottayam	600	630	775	660	713	588	560	700	800	880	600	713	600	713	693	693
ERANAKULAM																
Eranakulam	575	620	663	650	725	588	610	700	763	720	550	825	550	825	674	674
THRISSUR																
Thrissur	875	860	900	760	825	750	740	925	1025	1260	775	1050	775	1050	897	897
KOZHIKODE																
Kozhikode	-	-	-	-	-	-	720	850	850	1100	600	825	600	825	824	824
AVERAGE	705	778	816	737	801	703	713	840	846	1072	673	829	673	829	796	796

MONTHLY AVERAGE MARKET WHOLESALe PRICES OF CASHEW NUT

YEAR: 1998-99

Rs/Oil

CENTRES	JUL	AUG	SEP	OCT	NOV	DEC	JAN	FEB	MAR	APR	MAY	JUN	AVG
THIRUVANANTHAPURAM													
Nedumangad	-	-	-	-	-	-	-	-	-	-	-	-	-
KOLLAM													
Kollam	-	-	-	-	-	-	-	-	-	-	-	-	-
Kadakkal	-	-	-	-	-	-	-	-	-	-	-	-	-
PATHANAMTHITTA													
Adoor	-	-	-	-	-	-	-	-	-	-	-	-	-
THRISSUR													
Irinjalakuda	-	-	-	-	-	-	-	-	-	4400	3700	-	4050
AVERAGE	-	-	-	-	-	-	-	-	-	4400	3700	-	4050

(Cashew nut Contd...)

YEAR: 1999-2000		Rs/Qtl												
CENTRES		JUL.	AUG.	SEP.	OCT.	NOV.	DEC.	JAN.	FEB.	MAR.	APR.	MAY.	JUN.	AVG.
THIRUVANANTHAPURAM														
Nedumangad		-	-	-	-	-	-	-	-	-	-	3200	2550	2875
KOLLAM														
Kollam		-	-	-	-	-	-	-	-	-	-	-	-	-
Kadakkal		-	-	-	-	-	4700	4738	4280	3625	3433	3000	3963	
PATHANAMTHITTA														
Adoor		-	-	-	-	-	NT	4525	4040	3200	3033	2900	3540	
AVERAGE		-	-	-	-	-	4700	4632	4160	3413	3222	2817	3633	

YEAR: 2000-01		Rs/Qtl												
CENTRES		JUL.	AUG.	SEP.	OCT.	NOV.	DEC.	JAN.	FEB.	MAR.	APR.	MAY.	JUN.	AVG.
THIRUVANANTHAPURAM														
Nedumangad		NT	NT	NT	NT	NT	NT	NT	2800	2350	2075	2075	NT	2213
KOLLAM														
Kollam		NT	NT	NT	NT	NT	NT	NT	NT	NT	NT	NT	NT	NT
Kadakkal		NT	NT	NT	NT	NT	NT	NT	2967	2738	2000	1733	2157	
PATHANAMTHITTA														
Adoor		2750	NT	NT	NT	NT	NT	NT	2800	2575	1800	2188		
THRISSUR														
Irinjalakuda		NT	NT	NT	NT	NT	NT	NT	2890	2545	1813	2179		
AVERAGE		2750	NT	NT	NT	NT	NT	NT	2767	2554	1958	1733	2462	

(Cashew nut Contd...)

YEAR: 2001-02

Rs/Qtl

CENTRES	JUL	AUG	SEP	OCT	NOV	DEC	JAN	FEB	MAR	APR	MAY	JUN	AVG
THIRUVANANTHAPURAM													
Nedumangad	NT	NT	NT	NT	NT	NT	NT	NT	NT	2200	NT	NT	2200
KOLLAM													
Kadakkal	NT	NT	NT	NT	NT	NT	2800	3075	3100	3000	2200	2450	2771
PATHANAMTHITTA													
Adoor	NT	NT	NT	NT	NT	NT	2200	2800	2880	2725	2400	NT	2601
THRISSUR													
Irinjalakuda	NT	NT	NT	NT	NT	NT	NT	NT	2983	2800	2550	NT	2778
AVERAGE	NT	NT	NT	NT	NT	NT	2500	2938	2988	2681	2383	2450	2717

YEAR: 2002-03

Rs/Qtl

CENTRES	JUL	AUG	SEP	OCT	NOV	DEC	JAN	FEB	MAR	APR	MAY	JUN	AVG
THIRUVANANTHAPURAM													
Nedumangad	-	-	-	-	-	-	-	3125	2975	2700	2000	-	2700
KOLLAM													
Kayamkulam	-	-	-	-	-	-	-	-	2975	2938	2567	-	2827
Kadakkal	-	-	-	-	-	-	3375	3250	3100	3033	2420	-	2951
PATHANAMTHITTA													
Adoor	-	-	-	-	-	-	3200	3300	3075	2817	2467	-	2915
THRISSUR													
Irinjalakuda	-	-	-	-	-	-	-	-	-	2900	2600	-	2750
AVERAGE	-	-	-	-	-	-	3288	3275	3018	2917	2496	-	2829

(Cashew nut Contd...)

YEAR: 2003-04

CENTRES	JUL	AUG	SEP	OCT	NOV	DEC	JAN	FEB	MAR	APR	MAY	JUN	AVG
THIRUVANANTHAPURAM													
Nedumangad	-	-	-	-	-	-	3000	3225	3325	3025	2550	-	3025
KOLLAM													
Kayamkulam	-	-	-	-	-	-	2975	3213	3163	3040	2700	-	3018
Kadakkal(Puthur)	-	-	-	-	-	-	NT	3333	3225	2980	2350	-	2972
PATHANAMTHITTA													
Adoor	-	-	-	-	-	-	3000	3263	3175	2980	2450	-	2974
THRISSUR													
Irinjalakuda	-	-	-	-	-	-	NT	NT	3150	3000	2850	-	3000
KANNUR													
Thaliparambu	-	-	-	-	-	-	3425	3413	3338	NT	NT	1400	2894
KASARAGOD													
Kasaragod	-	-	-	-	-	-	NT	NT	3100	NT	NT	3000	3050
AVERAGE	-	-	-	-	-	-	3100	3289	3211	3005	2580	2200	2987

MONTHLY AVERAGE MARKET WHOLESale PRICES OF TAPIOCA RAW

YEAR: 1998-99

Rs/QH

CENTRES	JUL	AUG	SEP	OCT	NOV	DEC	JAN	FEB	MAR	APR	MAY	JUN	AVG
THIRUVANANTHAPURAM													
Neyyattinkara	350	319	338	325	325	369	385	400	413	465	456	383	377
Nedumangad	330	350	338	320	350	350	388	400	400	400	400	400	369
KOLLAM													
Kadakkal	NT	263	308	300	333	326	330	325	319	340	300	294	313
PATHANAMTHITTA													
Adoor.	250	250	319	325	325	325	325	325	325	325	350	350	316
Thiruvalla	300	350	350	350	350	350	350	350	350	350	393	369	351
ALAPPUZHA													
Alappuzha	300	300	300	304	305	300	300	300	300	300	300	300	301
Chengannur	320	338	350	350	350	350	350	350	350	350	350	350	347
Kayamkulam	300	300	300	300	303	300	300	300	305	308	300	306	302
KOTTAYAM													
Changanassery	300	300	300	300	305	300	300	300	300	310	350	350	310
ERANAKULAM													
Eranakulam	300	267	300	293	380	380	280	280	280	296	300	300	305
North-Paravoor	318	310	301	300	310	294	298	300	320	338	360	340	316

(Tapioca Raw 1998-99 Contd...)

CENTRES	JUL	AUG	SEP	OCT	NOV	DEC	JAN	FEB	MAR	APR	MAY	JUN	AVG
THRISSUR													
Thrissur	230	206	206	205	213	206	213	213	263	231	225	213	219
Kodungalloor	318	300	295	276	273	298	280	263	305	316	295	320	295
Irinjalakuda	280	293	398	300	300	308	308	300	318	336	385	383	326
MALAPPURAM													
Ponnani	273	270	270	273	270	275	-	-	-	-	-	-	272
KOZHIKODE													
Kozhikode	379	375	363	350	350	357	347	380	376	413	475	475	387
KANNUR													
Kannur	400	400	400	400	400	400	400	400	400	417	460	450	411
AVERAGE	309	305	320	310	320	323	322	324	333	343	356	349	326

(Tapioca Raw Contd...)

YEAR: 1999-2000

Rs/Qtl

CENTRES	JUL	AUG	SEP	OCT	NOV	DEC	JAN	FEB	MAR	APR	MAY	JUN	AVG
THIRUVANANTHAPURAM													
Neyyattinkara	357	379	371	371	366	396	403	398	400	403	410	409	389
Nedumangad	400	400	400	400	425	450	450	450	450	450	450	450	431
KOLLAM													
Kadakkal	285	313	350	345	350	400	438	431	415	375	381	350	369
PATHANAMTHITTA													
Adoor	350	350	350	370	375	375	375	375	375	375	375	365	368
Thiruvalla	350	400	400	410	450	450	400	413	450	438	400	400	413
ALAPPUZHA													
Alappuzha	300	300	325	400	400	412	415	425	440	438	425	360	387
Chengannur	350	350	388	400	400	400	400	400	400	400	400	400	391
Kayamkulam	321	325	315	340	350	350	350	358	379	379	375	375	351
KOTTAYAM													
Changanassery	355	388	400	400	400	400	400	400	400	400	400	390	394
ERANAKULAM													
Eranakulam	300	300	300	380	475	496	483	450	450	450	450	430	414
North-Paravoor	319	388	408	435	415	412	430	414	420	420	398	406	405

(Tapioca Raw 1999-2000 Contd...)

CENTRES	JUL	AUG	SEP	OCT	NOV	DEC	JAN	FEB	MAR	APR	MAY	JUN	AVG
THRISSUR													
Thrissur	250	288	231	255	263	265	288	300	290	300	400	300	286
Kodungalloor	330	430	375	442	415	410	421	435	386	388	353	358	396
Irinjalakuda	365	365	409	412	400	400	423	430	430	430	400	400	405
MALAPPURAM													
Ponnani	400	NA	NA	NA	350	NA	NA	NA	NA	NA	NA	NA	375
KOZHIKODE													
Kozhikode	475	500	500	500	500	550	438	400	450	419	344	350	452
KANNUR													
Kannur	463	500	500	500	500	500	500	513	550	550	550	550	515
AVERAGE	352	374	376	398.	402	417	413	412	418	413	407	398	398

(Tapioca Raw Contd...)

YEAR: 2000-01

Rs/QH

CENTRES	JUL	AUG	SEP	OCT	NOV	DEC	JAN	FEB	MAR	APR	MAY	JUN	AVG
THIRUVANANTHAPURAM													
Neyyattinkara	400	385	386	380	388	385	380	389	385	390	400	392	388
Nedumangad	418	375	350	350	350	350	350	363	350	338	300	300	351
KOLLAM													
Kadakkal	325	313	330	356	325	330	313	300	310	294	325	370	324
PATHANAMTHITTA													
Adoor	350	350	350	350	350	350	350	350	310	300	300	300	334
Thiruvalla	400	400	400	400	400	400	400	400	400	400	400	300	392
ALAPPUZHA													
Alappuzha	363	398	390	400	400	400	378	378	360	375	325	300	372
Chengannur	400	400	400	400	400	400	400	400	400	400	400	400	400
Kayamkulam	376	380	380	350	350	350	325	300	300	300	310	300	335
KOTTAYAM													
Changanassery	400	394	400	400	400	400	400	363	350	325	319	300	371
ERANAKULAM													
Eranakulam	408	430	430	435	450	442	430	400	400	388	375	320	409
North-Paravoor	429	403	418	393	394	418	340	373	386	348	365	330	383

(Tapioca Raw 2000-01 Contd...)

CENTRES	JUL	AUG	SEP	OCT	NOV	DEC	JAN	FEB	MAR	APR	MAY	JUN	AVG
THRISSUR													
Thrissur	313	313	310	300	331	285	281	263	275	275	288	265	292
Kodungalloor	393	395	398	388	370	394	390	300	328	330	328	311	360
Irinjalakuda	400	400	400	400	400	400	400	400	400	384	366	278	386
MALAPPURAM													
Ponnani	NA	NA	350	313	NA	NA	NA	NA	NA	NA	NA	213	292
KOZHIKODE													
Kozhikode	338	313	310	288	306	310	300	300	300	300	300	300	305
KANNUR													
Kannur	550	550	550	550	550	550	550	550	550	550	463	440	534
AVERAGE	393	387	385	380	385	385	374	364	363	356	348	319	370

(Tapioca Raw Contd...)

YEAR: 2001-02

Rs/Qtl

CENTRES	JUL	AUG	SEP	OCT	NOV	DEC	JAN	FEB	MAR	APR	MAY	JUN	AVG
THIRUVANANTHAPURAM													
Neyyattinkara	368	381	383	348	359	383	425	450	466	450	450	440	409
Nedumangad	300	300	300	300	300	300	388	400	400	400	400	400	349
KOLLAM													
Kadakkal	338	360	313	283	392	350	338	348	345	375	365	344	346
PATHANAMTHITTA													
Adoor	300	320	350	350	350	350	315	313	310	323	329	348	330
Thiruvalla	280	293	298	288	283	298	400	400	400	400	400	400	345
ALAPPUZHA													
Alappuzha	300	300	300	295	304	310	320	313	356	350	330	395	323
Chengannur	263	310	313	325	300	300	350	350	350	350	350	350	326
Kayamkulam	325	360	400	400	400	400	300	300	300	314	332	350	348
KOTTAYAM													
Changanassery	300	300	300	300	350	369	356	363	430	400	400	400	356
ERANAKULAM													
Eranakulam	300	350	400	400	390	400	400	400	400	400	430	475	395
North-Paravoor	355	346	356	365	296	323	323	300	342	358	300	300	330

(Tapioca Raw 2001-02 Contd...)

CENTRES	JUL	AUG	SEP	OCT	NOV	DEC	JAN	FEB	MAR	APR	MAY	JUN	AVG
THRISSUR													
Thrissur	288	294	256	300	275	294	288	292	290	325	315	344	297
Kodungalloor	315	328	320	315	322	300	320	300	310	300	306	338	314
Irinjalakuda	280	300	310	315	320	328	330	313	313	368	400	438	335
MALAPPURAM													
Ponnani	257	-	-	250	250	-	-	-	-	-	-	-	252
KOZHIKODE													
Kozhikode	300	340	325	300	300	300	300	300	317	400	390	475	337
KANNUR													
Kannur	450	450	450	450	450	450	450	450	550	550	550	563	484
AVERAGE	312	333	336	328	332	341	350	350	367	379	378	398	350

(Tapioca Raw Contd...)

YEAR: 2002-03

Rs/Qtl

CENTRES	JUL.	AUG.	SEP.	OCT.	NOV.	DEC.	JAN.	FEB.	MAR.	APR.	MAY.	JUN.	AVG.
THIRUVANANTHAPURAM													
Neyyattinkara	428	434	435	480	480	500	500	500	500	495	480	485	476
Nedumangad	400	400	400	400	400	400	400	400	400	400	400	400	400
KOLLAM													
Kadakkal	363	385	400	400	400	413	355	350	288	350	361	325	366
PATHANAMTHITTA													
Adoor	350	350	350	350	350	350	436	413	425	450	430	393	387
Thiruvalla	450	450	450	450	470	425	400	438	450	450	440	438	443
ALAPPUZHA													
Alappuzha	430	450	490	468	470	445	350	350	350	350	350	350	404
Kayamkulam	369	378	383	385	390	384	400	400	400	413	419	425	396
Chengannur	350	370	381	400	400	400	383	395	390	385	371	359	382
KOTTAYAM													
Changanassery	419	445	450	488	500	463	400	400	400	400	400	400	430
ERANAKULAM													
Eranakulam	513	570	588	575	600	600	600	588	517	500	500	500	554
North-Paravoor	394	440	431	483	508	500	510	518	510	527	512	500	486

(Tapioca Ray 2002-03 Contd...)

CENTRES	JUL.	AUG	SEP	OCT	NOV	DEC	JAN	FEB	MAR	APR	MAY	JUN	AVG
THRISSUR													
Thrissur	350	340	350	425	450	450	450	444	444	450	450	413	418
Kodungalloor	320	409	500	500	504	505	500	493	500	500	500	500	478
Irinjalakuda	450	425	488	500	500	500	500	500	500	500	475	450	482
MALAPPURAM													
Ponnani	-	-	-	-	-	-	-	-	-	-	-	-	-
KOZHIKODE													
Kozhikode	475	500	363	350	350	394	480	450	513	550	460	425	443
KANNUR													
Kannur	550	550	550	550	550	588	575	600	600	600	600	563	573
AVERAGE	413	431	438	450	458	457	452	452	449	458	447	433	445

(Tapioca Raw Contd...)

YEAR: 2003-04

Rs/QHl

CENTRES	JUL	AUG	SEP	OCT	NOV	DEC	JAN	FEB	MAR	APR	MAY	JUN	AVG
THIRUVANANTHAPURAM													
Neyyattinkara	480	480	490	448	455	480	460	460	460	464	460	453	466
Nedumangad	400	400	400	400	400	400	400	400	413	450	450	413	411
KOLLAM													
Kadakkal	294	370	338	350	331	325	310	325	325	310	295	300	323
PATHANAMTHITTA													
Adoor	350	350	350	376	400	388	350	350	350	350	350	350	360
Thiruvalla	450	450	450	450	450	450	420	400	400	450	438	400	434
ALAPPUZHA													
Alappuzha	395	408	410	400	400	388	360	350	400	400	388	375	390
Chengannur	425	425	425	425	413	413	400	400	400	400	400	400	411
Kayamkulam	362	375	368	358	360	360	356	350	350	356	370	370	361
KOTTAYAM													
Changanassery	400	400	450	400	400	400	400	400	400	400	400	400	404
ERANAKULAM													
Eranakulam	500	500	500	500	505	500	500	500	500	500	500	500	500
North-Paravoor	515	440	508	515	515	523	518	490	515	506	500	463	501

(Tapioca Raw 2003-04 Contd...)

CENTRES	JUL	AUG	SEP	OCT	NOV	DEC	JAN	FEB	MAR	APR	MAY	JUN	AVG
THRISSUR													
Thrissur	510	420	438	430	438	450	405	400	413	408	400	400	425
Kodungalloor	510	486	500	506	500	513	514	491	500	507	505	485	501
Irinjalakuda	510	450	450	500	500	500	500	468	450	463	438	406	469
MALAPPURAM													
Ponnani	NT	350	450	NT	NT	NT	NT	NT	NT	NT	NT	NT	400
KOZHIKODE													
Kozhikode	417	380	363	320	300	400	400	413	425	413	400	350	382
KANNUR													
Kannur	550	550	550	550	550	550	550	550	550	550	550	550	550
AVERAGE	440	426	438	433	432	440	428	422	428	433	428	413	430

MONTHLY AVERAGE MARKET WHOLESALe PRICES OF CARDAMOM

YEAR: 1998-99

CENTRES	Rs/Kg												
	JUL	AUG	SEP	OCT	NOV	DEC	JAN	FEB	MAR	APR	MAY	JUN	AVG
IDUKKI													
Thodupuzha	NT	332	328	340	494	525	505	481	506	505	525	525	461
Kattappana	410	398	395	443	678	619	596	570	594	584	613	623	543
ERANAKULAM													
Kochi	375	381	429	425	554	563	520	525	550	550	550	538	497
THRISSUR													
Kozhikode	310	400	400	425	563	750	620	600	700	700	700	750	581
AVERAGE	378	378	388	408	572	614	560	544	588	585	597	609	521

YEAR: 1999-2000

CENTRES	Rs/Kg												
	JUL	AUG	SEP	OCT	NOV	DEC	JAN	FEB	MAR	APR	MAY	JUN	AVG
IDUKKI													
Thodupuzha	543	475	353	308	276	272	321	431	458	563	431	350	398
Kattappana	614	561	455	352	353	364	429	581	630	673	531	445	501
ERANAKULAM													
Kochi	580	588	550	470	388	400	438	525	598	756	638	500	536
THRISSUR													
Kozhikode	780	800	600	500	450	400	413	525	600	713	819	760	613
AVERAGE	634	606	490	408	367	359	400	516	572	676	605	514	512

(Cardamom Contd...)

YEAR: 2000-01

CENTRES	Rs/Kg												
	JUL	AUG	SEP	OCT	NOV	DEC	JAN	FEB	MAR	APR	MAY	JUN	AVG
IDUKKI													
Thodupuzha	370	421	447	391	393	431	475	540	522	511	506	480	457
Kattappana	506	557	595	500	500	527	619	601	604	568	538	539	555
ERANAKULAM													
Kochi	481	538	580	488	470	518	591	600	592	585	525	539	542
THRISSUR													
Kozhikode	700	650	600	600	488	530	625	725	710	700	688	700	643
AVERAGE	514	542	556	495	463	502	578	617	607	591	564	565	549

YEAR: 2001-02

CENTRES	Rs/Kg												
	JUL	AUG	SEP	OCT	NOV	DEC	JAN	FEB	MAR	APR	MAY	JUN	AVG
IDUKKI													
Thodupuzha	520	539	529	534	506	494	511	569	607	NT	NT	615	542
Kattappana	595	612	598	595	581	545	619	664	696	698	743	739	640
ERANAKULAM													
Kochi	554	565	545	528	532	545	589	625	683	685	732	750	611
THRISSUR													
Kozhikode	700	700	700	700	680	650	675	800	750	750	720	775	717
AVERAGE	592	604	593	589	575	559	599	665	684	711	732	720	631

(Cardamom Contd...)

YEAR: 2002-03

CENTRES	Rs/Kg												
	JUL	AUG	SEP	OCT	NOV	DEC	JAN	FEB	MAR	APR	MAY	JUN	AVG
IDUKKI													
Thodupuzha	696	642	640	576	452	409	467	475	450	433	390	325	496
Kattappana	796	707	750	643	525	488	577	550	474	474	452	400	570
ERANAKULAM													
Kochi	755	703	735	644	524	470	565	500	471	440	388	319	543
THRISSUR													
Kozhikode	712	850	788	788	513	400	580	600	625	613	595	488	629
AVERAGE													

YEAR: 2003-04

CENTRES	Rs/Kg												
	JUL	AUG	SEP	OCT	NOV	DEC	JAN	FEB	MAR	APR	MAY	JUN	AVG
IDUKKI													
Thodupuzha	275	275	296	294	273	274	278	274	261	269	268	275	276
Kattappana	354	346	399	435	353	355	352	324	311	320	345	340	353
ERANAKULAM													
Kochi	307	304	300	310	350	338	340	306	305	300	300	300	313
THRISSUR													
Kozhikode	413	440	413	450	419	400	375	363	375	395	400	388	403
AVERAGE	337	341	352	372	349	342	336	317	313	321	328	326	336

MONTHLY AVERAGE MARKET WHOLESALe PRICES OF TOBACCO

YEAR: 1998-99	CENTRES	Rs/Qtl														
		JUL	AUG	SEP	OCT	NOV	DEC	JAN	FEB	MAR	APR	MAY	JUN	AVG		
	THIRUVANANTHAPURAM															
	Thiruvanthapuram	4100	4100	4100	4100	4100	4100	4100	4100	4100	4100	4100	4100	4100	4100	4100
	KOLLAM															
	Kollam	1800	1800	1800	1800	1800	1800	1800	1800	1800	1800	1800	1800	1800	1800	1800
	Punalur	2500	2500	2500	2500	2500	2500	2500	2500	2500	2500	2500	2875	3000	2573	
	PATHANAMTHITTA															
	Adoor	2500	2500	2500	2500	2550	2700	2700	2700	2650	2600	2600	2600	2625	2594	
	ALAPPUZHA															
	Alappuzha (Ready)	3400	3400	3400	3080	3000	2800	2800	2800	2800	2800	2800	2800	2800	2800	3003
	Chengannur	2500	2500	2500	2500	2500	2800	2800	2800	2800	2800	2800	2800	2600	2646	
	KOTTAYAM															
	Kottayam	3200	2725	2200	2500	2750	2900	2340	2300	2300	2300	2300	2300	2300	2300	2510
	Changanassery	2000	2000	2000	2000	2000	2000	2000	2000	2000	2000	2000	2000	2000	2000	2000
	ERANAKULAM															
	Eranakulam	5500	5500	5500	5000	5000	5000	5000	5000	5000	5000	5000	5000	5000	5250	5146
	Kochi (Ready)	3000	3000	3000	3100		3500	3540	3600	3600	3600	3600	4075	4138	3468	
	Aluva	3700	3725	3850	4000	4000	3800	3620	3700	4000	4100	4625	5000	5000	4010	
	North Paravoor	3800	3800	3800	3840	4200	4275	4500	4750	5000	5000	5125	5500	5500	4466	
	Moovattupuzha	3000	3000	3000	3000	3000	3000	3000	3000	3000	3000	3000	3000	3000	3000	3000
	Kothamangalam	2000	2000	2000	2000	2000	2000	2000	2000	2000	2000	2000	2250	2000	2021	

(Tobacco 1998-99 Contd..)

CENTRES	JUL	AUG	SEP	OCT	NOV	DEC	JAN	FEB	MAR	APR	MAY	JUN	AVG
IDUKKI													
Thodupuzha	2000	2000	2000	2000	2000	2000	2000	2000	2000	2000	2000	2500	2042
THRISSUR													
Thrissur	5000	5013	5013	5040	5200	5100	5000	5000	5000	5000	5000	5000	5031
Kodungalloor	3190	3213	3238	3160	3775	3950	4000	4000	4075	4166	4270	4290	3777
Irinjalakuda	2900	2900	3000	3000	3000	3000	3000	3000	3225	3450	3450	3450	3115
Kunnankulam	3460	3500	3500	3500	3550	3650	3700	3700	3700	3700	3700	3700	3613
PALAKKAD													
Palakkad	4500	4500	4875	5000	4875	5000	5300	6000	6425	6167	6000	6500	5429
KOZHIKODE													
Kozhikode	5000	5075	5050	5053	5000	5000	5000	5000	5600	5567	5550	5825	5227
KANNUR													
Kannur	6320	6200	6200	6200	6200	6200	6200	6300	6300	6300	6300	6300	6252
AVERAGE	3426	3407	3410	3403	3476	3503	3495	3548	3631	3634	3710	3804	3538

(Tobacco Contd.)

YEAR: 1999-2000

Rs/Qtl

CENTRES

THIRUVANANTHAPURAM

Thiruvananthapuram

JUL 4100 AUG 4050 SEP 4000 OCT 4000 NOV 4000 DEC 4000 JAN 4000 FEB 4000 MAR 4000 APR 4000 MAY 4000 JUN 4000 AVG 4013

KOLLAM

Kollam

JUL 1800 AUG 1800 SEP 1800 OCT 1800 NOV 1800 DEC 1640 JAN 1625 FEB 1600 MAR 1560 APR 1550 MAY 1600 JUN 1600 AVG 1681

Punalur

JUL 3000 AUG 3000 SEP 3000 OCT 3000 NOV 3000 DEC 3000 JAN 3000 FEB 3000 MAR 3000 APR 3000 MAY 3000 JUN 3000 AVG 3000

PATHANAMTHITTA

Adoor

JUL 2700 AUG 2700 SEP 2740 OCT 2900 NOV 2750 DEC 2700 JAN 2750 FEB 2800 MAR 2800 APR 2800 MAY 2850 JUN 2960 AVG 2788

ALAPPUZHA

Alappuzha (Ready)

JUL 2880 AUG 3200 SEP 3200 OCT 3200 NOV 3200 DEC 3040 JAN 2800 FEB 2800 MAR 2800 APR 2800 MAY 2800 JUN 2800 AVG 2960

Chengannur

JUL 2600 AUG 2600 SEP 2600 OCT 2600 NOV 2600 DEC 2600 JAN 2600 FEB 2600 MAR 2600 APR 2600 MAY 2500 JUN 2400 AVG 2575

KOTTAYAM

Kottayam

JUL 2300 AUG 2450 SEP 2538 OCT 2750 NOV 2500 DEC 2460 JAN 2588 FEB 2650 MAR 2880 APR 3150 MAY 3200 JUN 3200 AVG 2722

Changanassery

JUL 2000 AUG 2000 SEP 2000 OCT 2000 NOV 2000 DEC 2000 JAN 2000 FEB 2000 MAR 2000 APR 2000 MAY 2000 JUN 2000 AVG 2000

ERANAKULAM

Eranakulam

JUL 6000 AUG 6000 SEP 6000 OCT 5800 NOV 5500 DEC 5500 JAN 5500 FEB 5500 MAR 5000 APR 5000 MAY 5000 JUN 5000 AVG 5483

Kochi (Ready)

JUL 4250 AUG 4250 SEP 4063 OCT 3820 NOV 3600 DEC 3300 JAN 3300 FEB 3300 MAR 3300 APR 3300 MAY 3300 JUN 3300 AVG 3590

Aluva

JUL 5000 AUG 5000 SEP 5000 OCT 4900 NOV 4500 DEC 4500 JAN 4500 FEB 4500 MAR 4500 APR 4500 MAY 4500 JUN 4500 AVG 4658

North Paravoor

JUL 5500 AUG 5500 SEP 5438 OCT 5050 NOV 5000 DEC 5000 JAN 5000 FEB 5000 MAR 5000 APR 5000 MAY 5000 JUN 5000 AVG 5124

Moovattupuzha

JUL 3000 AUG 3000 SEP 3000 OCT 3000 NOV 3000 DEC 3000 JAN 3000 FEB 3000 MAR 3000 APR 3000 MAY 3000 JUN 3000 AVG 3000

Kothamangalam

JUL 2000 AUG 2000 SEP 2000 OCT 2000 NOV 2000 DEC 2400 JAN 2500 FEB 2500 MAR 2500 APR 2500 MAY 2500 JUN 2500 AVG 2283

(Tobacco 1999-2000 Contd....)

CENTRES	JUL	AUG	SEP	OCT	NOV	DEC	JAN	FEB	MAR	APR	MAY	JUN	AVG
IDUKKI													
Thodupuzha	3000	3000	3000	3000	3000	3000	5000	3000	3000	3000	3000	3000	3000
THRISSUR													
Thrissur	5000	5000	5000	5000	4925	4900	4900	4975	5000	5000	5000	5000	4975
Kodungalloor	4310	4310	4153	4100	4025	4000	3600	3700	4000	4000	4000	3500	3975
Irinjalakuda	3420	3350	3150	3100	3100	3100	3100	3100	3100	3100	3100	3100	3152
Kunnankulam	3700	3750	3875	3900	3900	3900	3900	3900	3900	3900	3900	3900	3869
PALAKKAD													
Palakkad	6100	6000	6000	6000	6000	5500	5625	6000	6000	6000	6000	6000	5935
KOZHIKODE													
Kozhikode	5600	5700	5700	5700	5700	5600	5600	5600	5560	5500	5500	5500	5605
KANNUR													
Kannur	6300	6300	6300	6000	6000	6000	6000	6000	6000	6000	6000	6000	6075
AVERAGE	3844	3862	3844	3801	3732	3688	3677	3706	3705	3714	3716	3694	3748

(Tobacco Contd.)

YEAR: 2000-01

Rs/QH

CENTRES	JUL	AUG	SEP	OCT	NOV	DEC	JAN	FEB	MAR	APR	MAY	JUN	AVG
THIRUVANANTHAPURAM													
Thiruvananthapuram	4000	4000	4000	4000	3775	3700	3700	3700	3620	3225	3000	3000	3643
KOLLAM													
Kollam	1525	1400	1400	1400	1400	1400	1400	1400	1410	1463	1500	1500	1433
Punalur	3000	3000	3000	3000	3000	3000	3000	3000	3000	3000	3000	3000	3000
PATHANAMTHITTA													
Adoor	2800	2800	2804	2800	2875	3000	3000	3000	3000	3000	3000	3020	2925
ALAPPUZHA													
Alappuzha (Ready)	2800	2800	2800	2800	2800	2800	2800	2800	2720	2400	2400	2400	2693
Chengannur	2400	2400	2400	2400	2400	2400	2400	2400	2400	2400	2400	2400	2400
KOTTAYAM													
Kottayam	2575	1925	2120	2400	2875	3440	3500	3200	2800	2600	2600	2570	2717
Changanassery	2000	2000	2000	2000	2000	2000	2000	2000	2000	2000	2000	2000	2000
ERANAKULAM													
Eranakulam	5000	5000	5000	5000	5000	5000	3300	3300	3300	3300	3300	3300	4150
Kochi (Ready)	3300	3300	3300	3300	3300	3300	3300	3300	3300	3300	3300	3300	3300
Aluva	4500	4500	4500	4500	4500	4500	4500	4500	4500	4500	4500	4500	4500
North Paravoor	5000	5000	5000	5000	5000	4600	4500	4500	4500	4500	4500	4500	4717
Moovattupuzha	3000	3000	3000	3000	3000	3000	3000	3000	3000	3000	3000	3000	3000
Kothamangalam	2500	2500	2500	2500	2500	2500	2500	2500	2500	2500	2500	2450	2496

(Tobacco 2000-01 Contd.)

CENTRES	JUL	AUG	SEP	OCT	NOV	DEC	JAN	FEB	MAR	APR	MAY	JUN	AVG
IDUKKI													
Thodupuzha	3000	3000	3000	3000	3000	3000	3000	3000	3000	3000	3000	3000	3000
THRISSUR													
Thrissur	5000	5000	5000	5000	5000	5000	5000	5000	5000	5000	5000	50000	8750
Kodungalloor	3250	3000	3410	3500	3450	3500	3500	3675	3800	3850	3800	3640	3531
Irinjalakuda	3100	3100	3100	3100	3100	3100	3100	3100	3150	3150	3150	3150	3117
Kunnamkulam	3900	3900	3900	3600	3000	3000	3000	3000	3000	3000	3000	3000	3275
PALAKKAD													
Palakkad	5750	4750	4500	5500	5875	6000	6000	6000	6000	6000	6000	6000	5698
KOZHIKODE													
Kozhikode	5500	5500	5500	5475	5400	5400	5400	5400	5400	5430	5300	5300	5417
KANNUR													
Kannur	6000	6000	6000	6000	6000	6000	6000	6000	6000	6000	6000	6000	6000
AVERAGE	3632	3540	3556	3603	3602	3620	3541	3535	3518	3483	3466	5501	3716

(Tobacco Contd.)

YEAR: 2001-02

CENTRES	Rs/Qtl												
	JUL	AUG	SEP	OCT	NOV	DEC	JAN	FEB	MAR	APR	MAY	JUN	AVG
THIRUVANANTHAPURAM													
Thiruvananthapuram	3000	3000	3000	3000	3000	3000	3000	3000	3000	3000	3000	3000	3000
KOLLAM													
Kollam	1500	1540	1725	1650	1600	1638	1675	1650	1650	1650	1620	1700	1633
Punalur	3000	3000	3000	3000	3000	3000	3000	3000	3000	2950	3000	3000	2996
PATHANAMTHITTA													
Adoor	3100	3140	3450	3500	3760	4000	4000	4000	3900	3800	3800	3675	3677
ALAPPUZHA													
Alappuzha (Ready)	2400	2400	2600	2900	3000	3000	3000	3000	3000	3000	3000	3100	2867
Chengannur	2400	2560	2850	3000	3000	3000	3000	3000	3000	3000	3000	3000	2901
KOTTAYAM													
Kottayam	2500	2600	2800	3000	3200	3200	3125	2800	2680	2375	2660	2700	2803
Changanassery	2000	2000	2250	2500	2500	2500	2500	2500	2500	2500	2500	2500	2396
ERANAKULAM													
Eranakulam	5000	5000	5000	5000	5000	5000	5000	5000	5000	5000	5000	5000	5000
Kochi (Ready)	3300	3300	3300	3300	3300	3300	3300	3300	3300	3500	3700	3700	3383
Aluva	4500	4500	4500	4500	4500	4500	4500	4500	4500	4925	5000	5000	4619
North Paravoor	4500	4680	4800	4800	4800	4800	4800	4800	4800	4800	4960	5000	4795
Moovattupuzha	3000	3000	3000	3000	3000	3000	3000	3000	3000	3000	3000	3000	3000
Kothamangalam	2500	2500	2500	2500	2500	2450	2500	2500	2500	2775	2800	2725	2563

(Tobacco 2001-02 Contd.)

CENTRES	JUL	AUG	SEP	OCT	NOV	DEC	JAN	FEB	MAR	APR	MAY	JUN	AVG
IDUKKI													
Thodupuzha	3000	300	3000	3000	3000	3000	3000	3000	3000	3000	3000	3000	2775
THRISSUR													
Thrissur	5000	5000	5000	5000	4700	5500	5500	5500	5500	5375	5500	5500	5256
Kodungalloor	3525	3580	3475	3438	3390	3700	4000	3738	3620	3800	4200	4150	3718
Irinjalakuda	3000	3000	3000	3000	3000	2863	3100	3138	3120	3100	3180	3200	3058
Kunnankulam	3125	3100	3100	3100	3100	3100	2538	2500	2500	2500	2570	2613	2821
PALAKKAD													
Palakkad	6000	6000	6000	6000	6000	6000	6000	6000	6000	6000	6400	6800	6100
KOZHIIKODE													
Kozhikode	5300	5420	5500	5725	5800	5800	5800	5800	6000	6000	6140	6750	5836
KANNUR													
Kannur	6000	6000	6000	6000	6000	6000	6000	6000	6000	6000	6000	6000	6000
AVERAGE	3530	3437	3630	3678	3689	3743	3743	3715	3708	3730	3820	3869	3691

(Tobacco Contd.)

YEAR: 2002-03

Rs/Qtl

CENTRES		JUL	AUG	SEP	OCT	NOV	DEC	JAN	FEB	MAR	APR	MAY	JUN	AVG
THIRUVANANTHAPURAM														
Thiruvananthapuram		3000	3000	3000	3000	3000	3000	3000	3000	3000	3000	3000	3000	3000
KOLLAM														
Kollam		1700	1690	1713	1700	1700	1663	1670	1750	1725	1850	1830	1800	1733
Punalur		3000	3000	3000	3000	3000	3000	3000	3000	3000	3000	3000	3000	3000
PATHANAMTHITTA														
Adoor		3600	3600	3600	3800	3800	3800	3800	4000	4000	4000	4000	4000	3833
ALAPPUZHA														
Alappuzha (Ready)		3100	3100	3100	3100	3100	3100	3100	3100	3100	3100	3100	3100	3100
Chengannur		3000	3000	3000	3075	3300	3325	3400	3400	3400	3400	3400	3400	3258
KOTTAYAM														
Kottayam		2650	2685	2775	3050	3200	3200	3340	3700	3625	3600	3600	3625	3254
Changanassery		2700	2900	2925	3000	3000	3000	3000	3000	3000	3000	3000	3000	2960
ERANAKULAM														
Eranakulam		5800	5800	5800	5800	5800	5800	5800	5800	5800	5800	5840	6250	5841
Kochi (Ready)		3700	3700	3700	3700	3700	3700	3820	4000	4188	4250	4210	4200	3906
Aluva		5000	5000	5000	5000	5000	5000	5100	5525	5750	6000	6000	6000	5365
North Paravoor		4950	5500	5500	5250	5000	5000	5000	5000	5000	5300	5300	5300	5175
Moovattupuzha		3000	3000	3000	3000	3000	3000	3000	3000	3000	3000	3000	3000	3000
Kothamangalam		2500	2300	2400	2400	2400	2200	2240	2400	2400	2500	2800	2800	2445

(Tobacco 2002-03 Contd..)

CENTRES	JUL	AUG	SEP	OCT	NOV	DEC	JAN	FEB	MAR	APR	MAY	JUN	AVG
IDUKKI													
Thodupuzha	3000	3000	3000	3000	3000	3000	3000	3000	3000	3000	3000	3000	3000
THRISSUR													
Thrissur	5500	5500	5500	5500	5500	5500	5000	5000	5000	4500	4500	4750	5146
Kodungalloor	4000	3760	3600	4000	4260	4575	4800	4800	4800	4950	4760	4500	4400
Irinjalakuda	3200	3200	3200	3225	3460	3500	3500	3525	3600	3600	3600	3600	3434
Kunnamkulam	2600	2600	2613	2650	2650	2688	2700	2700	2700	2763	2800	2800	2689
PALAKKAD													
Palakkad	7000	6750	7000	8000	8000	8000	8000	8250	8500	8500	8300	8000	7858
KOZHIKODE													
Kozhikode	7100	7150	7275	7500	7500	7500	7500	7500	7500	7500	7500	7500	7419
KANNUR													
Thalassery	6000	6000	6000	6000	6200	6500	6500	6500	6500	6500	6500	6500	6308
AVERAGE	3914	3920	3941	4034	4071	4093	4103	4180	4209	4232	4229	4233	4097

(Tobacco Contd.)

YEAR: 2003-04

Rs/Qtl

CENTRES	JUL	AUG	SEP	OCT	NOV	DEC	JAN	FEB	MAR	APR	MAY	JUN	AVG
THIRUVANANTHAPURAM													
Thiruvananthapuram	3000	3000	3000	3160	3200	3200	3200	3200	3200	3200	3200	3200	3147
KOLLAM													
Kollam	1800	1840	2000	2000	2000	2000	2000	2000	2000	2000	2000	2000	1970
Punalur	3000	3000	3000	3000	3000	3000	3000	3000	3000	3000	3000	3000	3000
PATHANAMTHITTA													
Adoor	4000	4040	3950	3680	3600	3600	3700	3700	3700	3700	3700	3700	3756
ALAPPUZHA													
Alappuzha (Ready)	3100	3100	3100	3100	3100	3100	3100	3100	3100	3100	3100	3100	3100
Chengannur	3400	3400	3400	3400	3400	3400	3400	3400	3400	3400	3400	3400	3400
KOTTAYAM													
Kottayam	3450	3260	3100	3000	2850	2700	2720	2800	2800	2680	2600	2750	2893
Changanassery	3000	3000	3000	3000	2700	2700	2700	2700	2700	2700	2700	2700	2800
ERANAKULAM													
Eranakulam	6375	6000	6000	6000	6000	6000	6000	6000	6000	6000	6000	6000	6031
Kochi (Ready)	4200	4200	4050	3840	3600	3600	3600	3375	3300	3120	3250	3800	3661
Aluva	6125	5500	4950	4380	4100	4000	3840	3800	3800	4025	4500	4500	4460
North Paravoor	5300	5120	5000	5000	4550	4700	4900	4275	4200	4360	4400	4400	4684
Moovattupuzha	3000	3000	3000	3000	3000	3000	3000	3000	3000	3000	3000	3000	3000
Kothamangalam	2800	2800	2200	1900	1750	1750	1750	1750	1638	1600	1600	2900	2037

(Tobacco 2003-04 Contd.)

CENTRES	JUL	AUG	SEP	OCT	NOV	DEC	JAN	FEB	MAR	APR	MAY	JUN	AVG
IDUKKI													
Thodupuzha	3100	3200	3200	3200	3200	3200	3200	3200	3200	3200	3200	3200	3192
THRISSUR													
Thrissur	5000	5000	5000	5000	5000	5000	5000	5000	5000	5000	5000	5000	5000
Kodungalloor	4300	4280	3850	3640	3525	3500	3480	3425	3400	3480	3550	3400	3653
Irinjalakuda	3600	3600	3600	3600	3600	3600	3480	3400	3400	3400	3400	3400	3507
Kunnamkulam	2800	2750	2750	2750	2750	2750	2750	2750	2750	2690	2650	2650	2733
PALAKKAD													
Palakkad	8000	8000	8150	6600	6250	6000	6000	5500	4625	4500	4500	4500	6052
KOZHIKODE													
Kozhikode	7500	7440	7400	7240	6575	6500	6320	6175	6125	6020	6050	6075	6618
KANNUR													
Thalassery	6500	6500	6500	6500	6500	6000	5700	5500	5500	5500	6000	6000	6058
AVERAGE	4243	4183	4100	3954	3830	3786	3765	3684	3629	3622	3673	3758	3852

MONTHLY AVERAGE MARKET WHOLESALe PRICES OF TEA

YEAR: 1998-99

CENTRES	Rs/Qtl												
	JUL	AUG	SEP	OCT	NOV	DEC	JAN	FEB	MAR	APR	MAY	JUN	AVG
KOTTAYAM													
Kottayam.	9100	9900	9600	9600	9600	9700	9910	9650	9400	9650	9100	8050	9438
ERANAKULAM													
Kochi	7000	7200	6800	7200	7300	7200	7250	6750	6650	6820	6700	6525	6950
AVERAGE	8050	8550	8200	8400	8450	8450	8580	8200	8025	8235	7900	7288	8194
KOZHIKODE													
Kozhikode(Rs./Kg)	116	133	133	134	137	137	140	141	136	139	141	143	136

YEAR: 1999-2000

CENTRES	Rs/Qtl												
	JUL	AUG	SEP	OCT	NOV	DEC	JAN	FEB	MAR	APR	MAY	JUN	AVG
KOTTAYAM													
Kottayam.	8840	9300	9450	9540	9750	9380	9250	8825	8100	7725	7150	6620	8661
ERANAKULAM													
Kochi	6800	6800	7375	6720	6938	6580	6675	6350	6520	6325	5825	5740	6554
AVERAGE	7820	8050	8413	8130	8344	7980	7963	7588	7310	7025	6988	6180	7608
KOZHIKODE													
Kozhikode(Rs./Kg)	152	157	157	156	138	131	131	127	125	118	110	81	132

(Tea Contd.)

YEAR: 2000-01		Rs/Qtl											
CENTRES	JUL	AUG	SEP	OCT	NOV	DEC	JAN	FEB	MAR	APR	MAY	JUN	AVG
KOTTAYAM													
Kottayam.	6650	6950	7140	6800	6150	6300	6725	6800	6720	6550	6300	6120	6600
ERANAKULAM													
Kochi	6275	6275	6540	6025	5550	6240	6500	6600	6500	5950	5500	5300	6105
AVERAGE	6463	6613	6840	6413	5850	6270	6613	6700	6610	6250	5900	5710	6353
KOZHIKODE													
Kozhikode(Rs./Kg)	90	80	82	80	76	79	70	84	75	71	70	70	77

YEAR: 2001-02		Rs/Qtl											
CENTRES	JUL	AUG	SEP	OCT	NOV	DEC	JAN	FEB	MAR	APR	MAY	JUN	AVG
KOTTAYAM													
Kottayam.	6500	7100	6975	6800	6560	6600	6700	6400	6700	6725	6780	6825	6722
ERANAKULAM													
Kochi	6050	6520	6250	5650	5580	5700	5250	5100	6800	6250	5880	5800	5903
AVERAGE	6275	6810	6613	6225	6070	6150	5975	5750	6750	6488	6330	6313	6312
KOZHIKODE													
Kozhikode(Rs./Kg)	78	83	90	80	79	79	78	76	80	78	80	73	80

(Tea Contd.)

YEAR: 2002-03

CENTRES	Rs/Qtl												
	JUL	AUG	SEP	OCT	NOV	DEC	JAN	FEB	MAR	APR	MAY	JUN	AVG
KOTTAYAM													
Kottayam.	6525	6600	7150	7050	6580	6300	6340	6900	6750	6775	6520	6275	6647
ERANAKULAM													
Kochi	5425	5640	6000	5850	5420	5400	5620	5925	5400	5700	5280	5050	5559
AVERAGE	5975	6120	6575	6450	6000	5850	5980	6413	6075	6238	5900	5663	6103
KOZHIKODE													
Kozhikode(Rs./Kg)	65	65	65	65	61	60	60	60	60	60	60	60	62

YEAR: 2003-04

CENTRES	Rs/Qtl												
	JUL	AUG	SEP	OCT	NOV	DEC	JAN	FEB	MAR	APR	MAY	JUN	AVG
KOTTAYAM													
Kottayam.	6350	6440	6425	6400	6375	6450	6600	6550	6900	7400	7200	7300	6699
ERANAKULAM													
Kochi	5067	5225	4800	4760	4700	4800	5160	4950	5600	5575	5375	5400	5118
AVERAGE	5709	5833	5613	5580	5538	5625	5880	5750	6250	6488	6288	6350	5908
KOZHIKODE													
Kozhikode(Rs./Kg)	60	58	54	49	45	52	65	65	78	83	71	70	63

MONTHLY AVERAGE MARKET WHOLESale PRICES OF COFFEE

YEAR: 1998-99

CENTRES	Rs/QHl												
	JUL	AUG	SEP	OCT	NOV	DEC	JAN	FEB	MAR	APR	MAY	JUN	AVG
KOTTAYAM													
Kottayam	7000	7100	7500	7500	7300	7000	7000	7000	6150	5700	5700	5700	6721
IDUKKI													
Kattappana	6200	6500	6700	6400	6200	6400	6320	5750	5375	5180	5063	5130	5935
AVERAGE	6600	6800	7100	6950	6750	6700	6660	6375	5762.5	5440	5382	5415	6328
KOZHIKODE													
Kozhikode (Rs/Kg)	130	130	130	130	130	130	130	130	130	137	140	140	132

YEAR: 1999-2000

CENTRES	Rs/QHl												
	JUL	AUG	SEP	OCT	NOV	DEC	JAN	FEB	MAR	APR	MAY	JUN	AVG
KOTTAYAM													
Kottayam	5700	5700	5700	5700	5600	5200	4475	3875	3560	3400	3400	3480	4649
IDUKKI													
Kattappana	5000	5050	5000	4860	4850	4520	3750	3375	3020	3200	3275	3310	4101
AVERAGE	5350	5375	5350	5280	8225	4860	4113	3625	3290	3300	3338	3395	4375
KOZHIKODE													
Kozhikode(Rs/Kg)	140	140	140	140	140	148	148	138	135	129	127	127	138

(Coffee Contd.)

YEAR: 2000-01

Rs/Qtl

CENTRES	JUL	AUG	SEP	OCT	NOV	DEC	JAN	FEB	MAR	APR	MAY	JUN	AVG
KOTTAYAM													
Kottayam	3625	3650	3720	3700	3550	3130	2750	2400	2300	2300	2375	2660	3013
IDUKKI													
Kattappana	3300	3367	3600	3600	3350	2940	2538	2175	2300	2250	2363	2580	2864
AVERAGE	3463	3509	3660	3650	3450	3035	2644	2288	2300	2275	2369	2620	2938
KOZHIKODE													
Kozhikode (Rs/Kg)	136	140	140	140	-	150	140	140	140	140	140	140	141

YEAR: 2001-02

Rs/Qtl

CENTRES	JUL	AUG	SEP	OCT	NOV	DEC	JAN	FEB	MAR	APR	MAY	JUN	AVG
KOTTAYAM													
Kottayam	2575	2420	2400	2400	2400	2325	1950	1825	2390	2413	2410	2400	2326
IDUKKI													
Kattappana	2513	2350	2225	2263	2220	2025	1775	1750	2140	2225	2170	2175	2153
AVERAGE	2544	2385	2313	2332	2310	2175	1863	1788	2265	2319	2290	2288	2239
KOZHIKODE													

(Coffee Contd.)

YEAR: 2002-03

CENTRES	Rs/Qtl												
	JUL	AUG	SEP	OCT	NOV	DEC	JAN	FEB	MAR	APR	MAY	JUN	AVG
KOTTAYAM													
Kottayam	2338	2260	2400	2425	3070	3100	3120	3325	3100	3000	3080	2825	2837
IDUKKI													
Kattappana	2150	2120	2200	2313	2820	2800	2990	3125	2875	2800	2820	2638	2638
AVERAGE	2244	2190	2300	2369	2945	2950	3055	3225	2988	2900	2950	2732	2737
KOZHIKODE													
Kozhikode (Rs/Kg)	138	138	120	120	120	120	120	120	120	120	120	120	123

YEAR: 2003-04

CENTRES	Rs/Qtl												
	JUL	AUG	SEP	OCT	NOV	DEC	JAN	FEB	MAR	APR	MAY	JUN	AVG
KOTTAYAM													
Kottayam	2800	2860	3000	3000	2900	2800	2880	2925	2825	2860	2925	3150	2910
IDUKKI													
Kattappana	2700	2780	2850	2840	2638	2638	2760	2713	2738	2765	2813	3000	2770
AVERAGE	2750	2820	2925	2920	2769	2719	2820	2819	2782	2813	2869	3075	2840
KOZHIKODE													
Kozhikode Rs/Kg)	120	120	120	120	120	120	120	120	120	120	120	125	120

MONTHLY AVERAGE MARKET WHOLESALe PRICES OF ARECANUT RIPE

YEAR: 1998-99	CENTRES	Rs/coccones															
		JUL	AUG	SEP	OCT	NOV	DEC	JAN	FEB	MAR	APR	MAY	JUN	AVG			
	THIRUVANANTHAPURAM																
	Nedumangad	510	538	588	510	525	575	590	763	850	1200	1350	1988	832			
	KOLLAM																
	Kadakkal	510	525	538	460	438	450	510	625	750	875	888	1600	681			
	PATHANAMTHITTA																
	Adoor	500	538	588	590	625	NT	625	700	900	1086	1225	1650	821			
	ALAPPUZHA																
	Alappuzha	600	613	600	540	538	467	590	738	913	1163	1500	1863	844			
	Chengannur	530	575	538	580	550	575	610	663	850	1100	1175	1875	802			
	KOTTAYAM																
	Pala	775	600	633	620	600	600	900	NT	900	1000	1038	1950	874			
	ERANAKULAM																
	Eranakulam	610	525	524	590	613	675	675	719	875	980	1225	1500	793			
	Kochi	670	600	600	600	625	NT	700	700	875	1110	1333	2000	892			
	North-Paravoor	580	513	600	550	588	625	610	688	819	1080	1300	1800	813			

(Areca nut Ripe 1998-99 Contd.)

CENTRES	JUL	AUG	SEP	OCT	NOV	DEC	JAN	FEB	MAR	APR	MAY	JUN	AVG
THRISSUR													
Thrissur	570	573	559	565	624	690	714	748	853	1050	1275	1750	831
Kodungalloor	670	663	625	600	614	650	600	663	763	840	925	1063	723
Kunnamkulam	613	588	625	600	675	694	710	788	958	1350	NT	NT	760
PALAKKAD													
Palakkad	415	488	488	550	613	567	665	717	889	1017	1275	1550	770
MALAPPURAM													
Manjeri	NT	NT	NT	NT	NT	NT	NT	NT	NT	685	NT	NT	685
Ponnani	664	485	485	600	648	743	748	763	881	1050	1175	1525	814
KOZHIKODE													
Kozhikode	490	475	475	533	588	475	700	866	900	1167	1450	1825	829
KANNUR													
Thalassery	310	400	400	410	420	440	437	517	813	1000	1225	1338	643
KASARAGOD													
Kasaragod	560	600	600	588	600	683	630	700	888	850	975	1125	733
AVERAGE	563	547	557	558	581	594	648	710	863	1034	1208	1650	790

(Areca nut Ripe Contd.)

YEAR: 1999-2000

Rs/1000 Nos

CENTRES	JUL	AUG	SEP	OCT	NOV	DEC	JAN	FEB	MAR	APR	MAY	JUN	AVG
THIRUVANANTHAPURAM													
Nedumangad	1960	1038	688	590	513	500	613	750	813	888	813	850	835
KOLLAM													
Kadakkal	1720	813	688	690	650	630	688	713	690	625	663	610	765
PATHANAMTHITTA													
Adoor	1820	925	800	790	525	500	688	788	750	763	875	890	843
ALAPPUZHA													
Alappuzha	1960	1175	938	720	475	500	750	700	720	700	738	840	851
Chengannur	2120	1063	800	730	500	500	538	683	625	613	725	850	812
KOTTAYAM													
Pala	2100	1500	850	800	725	540	563	713	820	875	800	790	923
ERANAKULAM													
Eranakulam	1900	925	838	830	775	620	575	650	740	750	813	850	856
Kochi	2390	1238	761	790	788	680	850	863	830	825	975	1104	1008
North-Paravoor	2000	1450	950	780	725	640	675	731	800	788	850	800	932

(Areca nut Ripe 1999-2000 Contd.)

CENTRES	JUL	AUG	SEP	OCT	NOV	DEC	JAN	FEB	MAR	APR	MAY	JUN	AVG
THRISSUR													
Thrissur	1900	1025	850	820	838	830	888	863	890	850	1000	950	975
Kodungalloor	1964	1675	1050	800	813	730	775	825	840	900	925	860	1013
Kunnankulam	2125	1325	913	935	925	870	900	888	850	863	967	NT	1051
PALAKKAD													
Palakkad	2160	1175	763	900	863	830	825	844	740	831	863	720	960
MALAPPURAM													
Manjeri	NT	NT	525	NT	NT	NT	NT	NT	NT	NT	NT	NT	525
Ponnani	2380	1567	925	900	813	890	850	913	830	875	850	760	1046
KOZHIKODE													
Kozhikode	2000	1250	950	760	888	760	850	775	655	713	813	670	924
KANNUR													
Thalassery	1288	675	513	600	550	420	467	538	680	750	825	725	669
KASARAGOD													
Kasaragod	1550	1275	1050	980	875	680	700	775	740	700	663	700	891
AVERAGE	1961	1182	825	789	720	654	717	765	765	783	833	811	901

(Areca nut Ripe Contd.)

Rs/1000 Nos

YEAR: 2000-01

CENTRES	JUL	AUG	SEP	OCT	NOV	DEC	JAN	FEB	MAR	APR	MAY	JUN	AVG
THIRUVANANTHAPURAM													
Nedumangad	700	600	400	363	250	320	388	413	530	563	775	630	494
KOLLAM													
Kadakkal	625	475	410	388	363	420	488	525	500	488	525	600	484
PATHANAMTHITTA													
Adoor	700	500	470	425	481	520	481	453	494	553	750	640	539
ALAPPUZHA													
Alappuzha	775	588	480	413	375	430	475	500	480	538	650	680	532
Chengannur	725	550	500	413	413	410	425	388	400	425	550	520	477
KOTTAYAM													
Pala	800	638	600	500	400	325	388	400	460	525	600	560	516
ERANAKULAM													
Eranakulam	850	688	520	425	413	450	438	444	485	525	675	600	543
Kochi	975	575	530	456	438	430	438	500	510	563	725	850	583
North-Paravoor	750	550	500	450	400	390	400	444	520	525	600	520	504

(Areca nut Ripe 2000-01 Contd.)

CENTRES	JUL	AUG	SEP	OCT	NOV	DEC	JAN	FEB	MAR	APR	MAY	JUN	AVG
THRISSUR													
Thrissur	788	563	450	444	456	510	521	475	498	565	718	554	545
Kodungalloor	800	575	440	400	388	400	413	438	500	613	800	690	538
Kunnamkulam	750	600	510	431	475	520	475	463	570	600	638	580	551
PALAKKAD													
Palakkad	525	475	440	400	456	410	450	413	470	538	525	420	460
MALAPPURAM													
Manjeri	NT	NT	NT	NT	NT	NT	NT	NT	NT	NT	NT	NT	NT
Ponnani	613	513	525	488	438	480	513	488	520	588	563	460	516
KOZHIKODE													
Kozhikode	600	400	320	244	288	310	325	358	430	450	513	400	387
KANNUR													
Thalassery	513	338	286	239	250	296	275	300	420	450	513	330	351
KASARAGOD													
Kasaragod	663	700	550	500	388	372	425	355	350	350	413	350	451
AVERAGE	715	549	467	411	392	411	430	433	479	521	620	552	498

(Areca nut Ripe Contd.)

Rs/1000Nas

YEAR: 2001-02

CENTRES	JUL	AUG	SEP	OCT	NOV	DEC	JAN	FEB	MAR	APR	MAY	JUN	AVG
THIRUVANANTHAPURAM													
Nedumangad	563	460	313	263	200	294	300	300	370	375	640	650	394
KOLLAM													
Kadakkal	575	384	333	278	264	310	308	315	374	425	584	713	405
PATHANAMTHITTA													
Adoor	538	380	375	313	315	438	444	444	450	575	870	763	492
ALAPPUZHA													
Alappuzha	550	410	375	288	260	288	400	400	500	588	870	738	472
Chengannur	538	410	356	294	250	300	344	350	390	475	620	563	408
KOTTAYAM													
Pala	500	430	381	300	270	250	300	320	400	525	910	863	454
ERANAKULAM													
Eranakulam	600	430	373	345	324	325	350	400	400	438	820	750	463
Kochi	600	410	400	350	400	400	458	400	450	488	990	800	512
North-Paravoor	463	370	350	338	290	369	388	400	450	475	660	738	441

(Areca nut Ripe 2001-02 Contd.)

CENTRES	JUL	AUG	SEP	OCT	NOV	DEC	JAN	FEB	MAR	APR	MAY	JUN	AVG
THRISSUR													
Thrissur	513	430	430	388	300	438	450	450	450	488	720	750	484
Kodungalloor	513	390	388	369	306	415	433	500	600	600	870	800	515
Kunnankulam	488	325	288	256	300	363	375	400	433	450	533	NT	383
PALAKKAD													
Palakkad	318	250	300	281	249	375	400	400	427	500	620	563	390
MALAPPURAM													
Manjeri	NT	NT	NT	131	NT	NT	NT	NT	750	NT	NT	NT	441
Ponnani	375	320	338	350	340	450	400	400	450	450	590	500	414
KOZHIKODE													
Kozhikode	313	225	231	201	585	863	875	800	950	1150	1780	1500	794
KANNUR													
Thalassery	325	213	200	200	200	225	263	250	367	430	590	425	307
KASARAGOD													
Kasaragod	310	300	338	313	300	350	350	350	317	300	520	475	351
AVERAGE	478	361	339	292	303	380	402	405	474	514	776	724	452

Rs/1000 Nos

YEAR: 2002-03

(Areca nut Ripe Contd.)

CENTRES	JUL	AUG	SEP	OCT	NOV	DEC	JAN	FEB	MAR	APR	MAY	JUN	AVG
THIRUVANANTHAPURAM													
Nedumangad	550	420	375	233	230	250	330	375	325	338	480	800	392
KOLLAM													
Kadakkal	NT	NT	NT	NT	NT	NT	340	320	350	467	740	825	507
Puthur	720	590	400	315	278	308	340	NT	NT	NT	NT	NT	435
PATHANAMTHITTA													
Adoor	613	450	350	338	290	288	365	362	356	467	660	775	443
ALAPPUZHA													
Alappuzha	638	550	408	300	250	238	330	375	388	413	700	713	442
Chengannur	513	430	356	313	235	225	240	308	338	356	481	569	364
KOTTAYAM													
Pala	763	460	383	350	290	263	330	400	400	450	700	850	470
ERANAKULAM													
Eranakulam	638	500	363	355	340	325	300	388	363	450	500	788	443
Kochi	688	500	425	400	380	300	380	400	400	400	425	450	429
North-Paravoor	613	500	375	300	300	250	270	300	413	513	610	725	431

(Areca nut Ripe 2002-03 Contd.)

CENTRES	JUL	AUG	SEP	OCT	NOV	DEC	JAN	FEB	MAR	APR	MAY	JUN	AVG
THRISSUR													
Thrissur	700	600	450	388	360	388	380	400	400	450	620	700	486
Kodungalloor	700	580	433	400	320	300	300	300	400	575	750	788	487
Kunnamkulam	600	430	400	400	400	400	400	350	381	500	600	700	463
PALAKKAD													
Palakkad	650	470	395	375	550	351	365	343	389	438	572	632	461
MALAPPURAM													
Manjeri	NT	530	NT	NT	694	725	720	713	681	783	NT	1467	789
Ponnani	563	500	416	400	400	400	400	375	350	388	555	556	442
KOZHIKODE													
Kozhikode	925	713	625	588	590	588	700	713	725	900	1460	1475	834
KANNUR													
Thalassery	350	313	250	200	192	200	252	300	325	375	500	463	310
KASARAGOD													
Kasaragod	400	375	350	400	300	275	300	300	350	350	440	563	367
AVERAGE	625	495	397	356	356	337	371	390	407	479	635	769	467

Rs/1000 Nos

(Areca nut Ripe Contd.)

YEAR: -2003-04

CENTRES	JUL	AUG	SEP	OCT	NOV	DEC	JAN	FEB	MAR	APR	MAY	JUN	AVG
THIRUVANANTHAPURAM													
Nedumangad	513	460	400	330	225	233	340	375	413	480	625	725	427
KOLLAM													
Kadakkal	600	490	400	400	400	400	430	575	600	600	825	875	550
Puthur													
PATHANAMTHITTA													
Adoor	575	370	375	395	300	250	320	488	488	525	788	863	478
ALAPPUZHA													
Alappuzha	538	420	400	360	275	263	390	500	500	500	700	863	476
Chengannur	500	360	325	330	263	250	350	438	450	456	588	713	419
KOTTAYAM													
Pala	725	420	350	350	NT	300	300	400	450	460	750	850	487
ERANAKULAM													
Eranakulam	638	530	495	432	350	350	414	500	500	530	550	725	501
Kochi	450	500	500	500	500	500	380	500	300	600	600	800	511
North-Paravoor	625	540	475	425	375	350	370	463	488	530	563	675	490

(Arecanut Ripe 2003-04 Contd.)

CENTRES	JUL	AUG	SEP	OCT	NOV	DEC	JAN	FEB	MAR	APR	MAY	JUN	AVG
THRISSUR													
Thrissur	625	460	450	420	400	400	400	425	500	504	650	688	494
Kodungalloor	525	490	500	400	395	450	440	500	500	700	725	800	535
Kunnamkulam	500	360	350	350	363	419	450	500	550	550	550	.	449
PALAKKAD													
Palakkad	575	379	360	345	350	374	403	425	460	444	581	463	430
MALAPPURAM													
Manjeri	875	685	725	745	783	1008	1025	1025	950	981	NA	1246	913
Ponnani	525	440	400	400	375	388	420	443	450	450	538	500	444
KOZHIKODE													
Kozhikode	988	820	763	780	750	775	1040	1025	1000	1060	1388	1438	986
KANNUR													
Thalassery	338	350	325	288	223	265	298	356	375	420	500	550	357
KASARAGOD													
Kasaragod	325	430	413	425	350	300	380	400	400	410	417	513	397
AVERAGE	580	472	445	426	393	404	453	519	521	567	667	782	518

MONTHLY AVERAGE MARKET WHOLESALe PRICES OF COCOA

YEAR: 1998-99

Rs/Qtl

CENTRES	JUL	AUG	SEP	OCT	NOV	DEC	JAN	FEB	MAR	APR	MAY	JUN	AVG
THIRUVANANTHAPURAM													
Nedumangad	NT	NT	NT	NT	NT	NT	NT	NT	NT	NT	NT	NT	NT
ALAPPUZHA													
Pulinkunnu	1660	1600	1600	1600	1600	1675	1700	1600	1600	1600	1600	1600	1620
PATHANAMTHITTA													
Thiruvalla	1600	1600	1600	1620	1738	1768	1830	1850	1850	1880	1900	1900	1761
KOTTAYAM													
Kottayam	1600	1600	1600	1600	1600	1725	1980	1950	2000	2000	2000	1950	1800
Pala	1650	1650	1675	1690	1963	2150	2150	2150	2100	2120	2150	1962	1951
IDUKKI													
Kattappana	NT	NT	NT	NT	NT	NT	2160	2300	2300	2220	2200	2000	2197
Thodupuzha	1600	1600	1600	1600	1600	1600	2060	2000	2050	2160	2100	1937	1826
ERANAKULAM													
Moovattupuzha	NT	NT	NT	1650	NT	1950	1940	1900	1875	1980	2000	2000	1912
Kothamangalam	1650	1650	1650	1690	1875	2000	2040	2100	2100	2100	2100	1887	1904
THRISSUR													
Thrissur	1600	1600	1600	1600	1600	1650	1700	1700	1800	1800	1800	1800	1688
AVERAGE	1623	1614	1618	1631	1711	1815	1951	1950	1964	1984	1983	1893	1827

(Cocoa Contd.)

YEAR: 1999 -2000

Rs/Qtl

CENTRES	JUL	AUG	SEP	OCT	NOV	DEC	JAN	FEB	MAR	APR	MAY	JUN	AVG
THIRUVANANTHAPURAM													
Nedumangad	NT	NT	NT	NT	NT	NT	NT	NT	NT	NT	NT	NT	NT
ALAPPUZHA													
Pulinkunnu	1600	1600	1600	1600	1600	1600	1500	1500	1500	1500	1500	1500	1550
PATHANAMTHITTA													
Thiruvalla	1900	1700	1600	1600	1600	1600	1600	1600	1600	1600	1600	1570	1631
KOTTAYAM													
Kottayam	1840	1775	1760	1780	1700	1700	1700	1675	1660	1650	1625	1570	1703
Pala	1840	1675	1690	1680	1575	1650	1638	1613	1620	1588	1525	1490	1632
IDUKKI													
Kattappana	1700	1630	1600	1700	1625	1600	1600	1625	1650	1613	1575	1570	1624
Thodupuzha	1780	1800	1730	1700	1700	1660	1650	1650	1650	1650	1600	1600	1681
ERANAKULAM													
Moovattupuzha	1740	1680	1580	1600	1600	1600	1600	1550	1560	1550	1550	1490	1592
Kothamangalam	1650	1640	1600	1600	1600	1600	1600	1600	1550	1550	1550	1490	1586
THRISSUR													
Thrissur	1740	1650	1600	1600	1600	1600	1600	1600	1615	1600	1600	1540	1612
AVERAGE	1754	1683	1640	1651	1622	1623	1610	1601	1600	1589	1569	1536	1623

(Cocoa Contd.)

YEAR: 2000-01

Rs/QH

CENTRES	JUL	AUG	SEP	OCT	NOV	DEC	JAN	FEB	MAR	APR	MAY	JUN	AVG
THIRUVANANTHAPURAM													
Nedumangad	NT	NT	NT	NT	NT	NT	NT	NT	NT	NT	NT	NT	NT
ALAPPUZHA													
Pulinkunnu	1300	1200	1200	1100	1000	1000	1000	1100	1100	1100	1100	1040	1103
PATHANAMTHITTA													
Thiruvalla	1525	1463	1430	1400	1400	1400	1400	1000	1400	1200	1050	1000	1306
KOTTAYAM													
Kottayam	1488	1450	1410	1350	1275	1200	1163	1150	1150	1150	1150	1150	1257
Pala	1400	1338	1270	1200	1200	1120	1188	1288	1280	1313	1363	1380	1278
IDUKKI													
Kattappana	1375	1317	1240	1200	1200	1240	1300	1375	1400	1400	1400	1380	1319
Thodupuzha	1488	1413	1360	1300	1250	1280	1350	1388	1400	1450	1450	1460	1382
ERANAKULAM													
Moovattupuzha	1375	1300	1140	1050	1175	1170	1100	1150	1180	1200	1225	1280	1191
THRISSUR													
Thrissur	1475	1400	1300	1300	1250	1200	1300	1325	1400	1400	1400	1400	1346
AVERAGE	1424	1359	1294	1233	1208	1188	1222	1233	1296	1285	1276	1270	1274

(Cocoa Contd.)

YEAR: 2001-02

Rs/Qtl

CENTRES	JUL	AUG	SEP	OCT	NOV	DEC	JAN	FEB	MAR	APR	MAY	JUN	AVG
THIRUVANANTHAPURAM													
Nedumangad	NT	NT	NT	NT	NT	NT	NT	NT	NT	NT	NT	NT	NT
ALAPPUZHA													
Pulinkunnu	1017	1050	1013	1000	1100	1100	1100	1100	1100	1100	1350	1350	1115
PATHANAMTHITTA													
Thiruvalla	1400	1400	1400	1000	900	900	900	900	900	900	1060	1450	1093
KOTTAYAM													
Kottayam	NT	NT	NT	NT	NT	NT	NT	NT	NT	NT	NT	NT	NT
Pala	1263	1220	1263	1300	1340	1350	1450	1575	1650	1650	2000	2050	1509
IDUKKI													
Kattappana	1275	1200	1225	1300	1310	1350	1375	1550	1680	1850	2100	2200	1535
Thodupuzha	1313	1300	1300	1375	1400	1425	1513	1600	1680	1875	2040	2200	1585
ERANAKULAM													
Moovattupuzha	1213	1160	1200	1100	1120	1200	1225	1200	1450	1725	2038	2188	1402
Kothamangalam	1250	1250	1250	1275	1300	1313	1350	1538	1650	1800	2075	2288	1528
THRISSUR													
Thrissur	1300	1300	1300	1300	1300	1300	1300	1300	1300	1300	1300	1300	1300
AVERAGE	1254	1235	1244	1206	1221	1242	1277	1345	1426	1525	1745	1878	1383

(Cocoa Contd.)

YEAR: 2002-03

CENTRES	Rs/Qtl												
	JUL	AUG	SEP	OCT	NOV	DEC	JAN	FEB	MAR	APR	MAY	JUN	AVG
THIRUVANANTHAPURAM													
Nedumangad	NT	NT	NT	NT	NT	NT	NT	NT	NT	NT	NT	NT	NT
ALAPPUZHA													
Pulinkunnu	1388	1400	1400	1438	1840	2150	1980	1975	2000	20000	2000	2200	3314
PATHANAMTHITTA													
Thiruvalla	1900	2100	2150	2825	2720	2375	2120	1725	1675	2250	2280	2225	2195
KOTTAYAM													
Kottayam	NT	NT	NT	NT	NT	NT	NT	NT	NT	NT	NT	NT	NT
Pala	2150	2150	2450	2725	2520	2325	2300	2633	2625	2625	2340	2150	2416
IDUKKI													
Kattappana	2200	2240	2500	2875	2780	2538	3100	3050	2600	2500	2340	2100	2569
Thodupuzha	2238	2360	2600	2825	2720	2375	2660	2750	2775	2700	2420	2250	2556
ERANAKULAM													
Moovattupuzha	2300	2240	2550	2850	2660	2475	2840	3063	2900	2663	2360	2125	2586
Kothamangalam	2238	2240	2500	2967	2680	2367	2900	3075	2950	2700	2433	2200	2604
THRISSUR													
Thrissur	1650	2000	2000	2150	2440	2200	2360	2400	2450	2500	2500	2500	2263
AVERAGE	2008	2091	2269	2582	2545	2351	2533	2584	2497	4742	2334	2219	2563

(Cocoa Contd.)

YEAR: 2003-04

CENTRES	Rs/Qu												
	JUL	AUG	SEP	OCT	NOV	DEC	JAN	FEB	MAR	APR	MAY	JUN	AVG
THIRUVANANTHAPURAM													
Nedumangad	NT	NT	NT	NT	NT	NT	NT	NT	NT	NT	NT	NT	NT
ALAPPUZHA													
Pulinkunnu	2200	2000	2000	1840	1850	1800	1800	1800	1800	1800	1800	1800	1874
PATHANAMTHITTA													
Thiruvalla	2225	1880	1800	1730	1550	1875	1880	1800	1800	1900	1950	2000	1866
KOTTAYAM													
Kottayam	NT	NT	NT	NT	NT	NT	NT	NT	NT	NT	NT	NT	NT
Pala	1975	1780	1750	1750	1900	1900	2050	2200	2125	2270	2275	2300	2023
IDUKKI													
Kattappana	1900	1700	1725	1870	2075	2513	2380	2300	2300	2400	2400	2350	2159
Thodupuzha	2000	1840	1788	1920	2163	2425	2380	2625	2500	2500	2500	2425	2256
ERANAKULAM													
Moovattupuzha	1850	1800	1813	1910	2075	2300	2400	2400	2400	2467	2450	2313	2182
Kaladi	NT	NT	NT	NT	NT	NT	600	600	600	NT	575	363	548
Kothamangalam	1950	1825	1800	1900	2100	2300	2400	2400	2400	2400	2500	2350	2194
THRISSUR													
Thrissur	2125	1860	1800	1860	1900	2050	2100	2100	2100	2210	2267	2275	2058
AVERAGE	2028	1836	1810	1848	1952	2145	1999	2025	2008	2243	2080	2020	2001

MONTHLY AVERAGE MARKET WHOLESALE PRICES OF COCONUT WITH HUSK

Rs/1000 Nos.

YEAR: 1998-99

CENTRES	JUL	AUG	SEP	OCT	NOV	DEC	JAN	FEB	MAR	APR	MAY	JUN	AVG
THIRUVANANTHAPURAM													
Thiruvananthapuram	3560	3538	3650	4225	4163	4388	4520	4600	4638	4860	4450	4563	4263
Neyyattinkara	3330	3350	3400	4020	3763	3600	4130	4300	4275	4660	4530	4338	3975
KOLLAM													
Kollam	5120	5367	5375	5900	5788	6188	6070	6063	5938	6410	6125	6250	5883
PATHANAMTHITTA													
Adoor	4030	3975	NT	4650	4688	4938	5120	5125	5000	5350	5313	5375	4869
ALAPPUZHA													
Alappuzha	4000	NT	4250	4580	4450	4700	5000	4875	4967	5275	5050	5100	4750
Kayamkulam	4360	4425	4550	5010	4950	5225	5380	5513	5600	5790	5433	5550	5149
Pulinkunnu	3580	3525	3625	3930	3925	4200	4100	4150	4338	4720	4500	4575	4097
ERANAKULAM													
Eranakulam	4380	4413	NT	5065	4888	5313	NT	5313	5413	5710	5325	5456	5128
AVERAGE	4045	4085	4142	4673	4577	4819	4903	4992	5021	5347	5091	5151	4755

(Coconut With Husk Contd..)

YEAR: 1999-2000

Rs/1000 Nos.

CENTRES	JUL	AUG	SEP	OCT	NOV	DEC	JAN	FEB	MAR	APR	MAY	JUN	AVG
THIRUVANANTHAPURAM													
Thiruvananthapuram	4510	4825	5088	5350	5588	5450	4975	4125	3800	3463	3288	2920	4449
Neyyattinkara	4110	4348	4469	4626	4848	4818	4575	3913	3485	3125	2933	2732	3999
KOLLAM													
Kollam	6390	6838	6938	7250	7300	6850	6063	5625	5150	4750	4688	4350	6016
PATHANAMTHITTA													
Adoor	5300	5688	5513	5950	6438	5470	5250	4638	4090	3700	3600	3100	4895
ALAPPUZHA													
Alappuzha	5080	5475	5425	5620	5675	5440	5025	4688	4500	4275	4075	3340	4885
Kayamkulam	5470	5588	5250	5870	6050	6010	5775	5150	4520	4000	3775	3400	5072
Pulinkunnu	4660	5063	4820	5030	5475	5340	4913	4025	3690	3363	3100	2820	4358
ERANAKULAM													
Eranakulam	5485	5875	5750	6030	6013	5740	5269	4450	4005	3806	3554	3380	4946
AVERAGE	5126	5463	5407	5716	5923	5640	5231	4577	4155	3810	3627	3255	4827

(Coconut With Husk Contd..)

YEAR: 2000-01

Rs/1000 Nos

CENTRES	JUL	AUG	SEP	OCT	NOV	DEC	JAN	FEB	MAR	APR	MAY	JUN	AVG
THIRUVANANTHAPURAM													
Thiruvananthapuram	2425	2750	2900	2513	2525	2690	2725	2850	2840	2675	2450	2650	2666
Neyyattinkara	2338	2425	2508	2253	2194	2237	2243	2438	2520	2581	2263	2510	2376
KOLLAM													
Kollam	3875	4375	3800	3813	3750	3700	3875	3963	3700	3438	3525	3650	3789
PATHANAMTHITTA													
Adoor	2663	2775	3060	2813	2938	3040	2950	3013	3250	2950	2913	3260	2969
ALAPPUZHA													
Alappuzha	3100	3400	3720	3675	3550	3520	3175	3250	3220	3000	2925	3240	3315
Kayamkulam	3000	3025	3210	2850	3088	2980	2938	3200	3280	3150	2975	3460	3096
Puhinkunnu	2413	2525	2470	2263	2350	2490	2444	2556	2500	2350	2300	2490	2429
ERANAKULAM													
Eranakulam	3131	3338	3150	3018	3078	3081	2969	3175	3135	3008	3025	3275	3115
AVERAGE	2868	3077	3102	2900	2934	2967	2915	3056	3056	2894	2797	3067	2969

(Coconut With Husk Contd..)

YEAR: 2001-02

Rs/1000 Nos.

CENTRES	JUL	AUG	SEP	OCT	NOV	DEC	JAN	FEB	MAR	APR	MAY	JUN	AVG
THIRUVANANTHAPURAM													
Thiruvananthapuram	2775	2940	3000	3000	3270	3875	3750	3363	3250	3438	3500	3800	3330
Neyyattinkara	2481	2494	2410	2618	2810	3458	3825	3688	3430	3413	3500	3513	3137
KOLLAM													
Kollam	3625	4100	4188	4250	4780	5225	4950	4800	4620	4600	4490	4788	4535
PATHANAMTHITTA													
Adoor	3313	3360	3400	3500	3650	4363	4275	3950	3720	3850	4000	4238	3802
ALAPPUZHA													
Alappuzha	3400	3280	3225	3275	3500	4300	4225	4350	4100	4175	4700	5500	4003
Kayamkulam	3050	3200	3138	2988	3480	4188	4238	4075	3430	3900	4190	4513	3699
Pulinkunnu	2500	2540	2463	2575	2800	3575	3513	3363	3030	3300	3340	3650	3054
ERANAKULAM													
Eranakulam	3219	3280	3150	3144	3290	4031	3894	3769	3592	3981	4045	4519	3660
AVERAGE	3045	3149	3122	3169	3448	4127	4084	3920	3647	3832	3971	4315	3652

Rs/1000 Nos.

(Coconut With Husk Contd..)

YEAR: 2002-03

CENTRES	JUL	AUG	SEP	OCT	NOV	DEC	JAN	FEB	MAR	APR	MAY	JUN	AVG
THIRUVANANTHAPURAM													
Thiruvananthapuram	4075	4000	3975	3900	4650	4813	4750	4750	4750	4750	4480	4063	4413
Neyyattinkara	3783	3600	3575	3538	4070	4738	4660	4903	4795	4588	4320	3775	4195
KOLLAM													
Kollam	5000	5110	4750	5275	6260	6800	6280	6800	6450	6500	6285	5950	5955
PATHANAMTHITTA													
Adoor	4750	4830	4900	4925	5320	5625	5520	5300	5225	5100	5000	5075	5131
ALAPPUZHA													
Alappuzha	5650	5500	5100	5050	6080	5925	5500	5800	5713	5588	5860	5638	5617
Kayamkulam	4963	4920	4713	4809	5672	5713	5790	6150	6163	5925	5600	5275	5474
Pulinkunnu	4038	4170	4113	4031	4920	5200	5130	5113	5038	4750	4680	4363	4629
ERANAKULAM													
Eranakulam	4781	4865	4706	4718	5565	5675	5600	5888	5838	5800	5335	5119	5324
AVERAGE	4630	4624	4479	4531	5317	5561	5404	5588	5497	5375	5195	4907	5092

(Coconut With Husk Contd.)

YEAR: 2003-04

Rs/1000 Nos.

CENTRES	JUL	AUG	SEP	OCT	NOV	DEC	JAN	FEB	MAR	APR	MAY	JUN	AVG
THIRUVANANTHAPURAM													
Thiruvananthapuram	4125	4810	5163	5510	6288	5475	5700	5275	5125	5100	5000	5700	5273
Neyyattinkara	3838	4210	4575	4840	5413	5088	4980	4725	4825	4800	4725	5025	4754
KOLLAM													
Kollam	6000	6420	6775	7080	7500	7225	6580	6500	6975	7040	6400	6650	6762
Kadakkal	5563	5800	6563	6800	8063	7575	7150	7425	7000	6950	6875	7250	6918
PATHANAMTHITTA													
Thiruvalla	5150	5470	5625	6250	6750	6938	6450	5938	6250	6100	6125	6794	6153
ALAPPUZHA													
Alappuzha	5588	5960	6650	6650	6638	6425	6040	5800	5588	5530	5575	6088	6044
Kayamkulam	5467	6017	6467	6933	-	6700	6320	5900	NT	5950	6263	6958	6298
Chengannur	5525	5800	6163	6570	6888	6825	6700	6313	6313	6000	6025	6538	6305
KOTTAYAM													
Kottayam	5488	6040	6475	6920	7038	6400	6050	5925	6163	5800	5825	6500	6219
ERANAKULAM													
Eranakulam	5556	5855	6275	6675	6925	6763	6370	6081	6100	6050	6219	6719	6299
Aluva	6050	6320	7000	7300	7925	7500	7250	6938	7000	7000	7125	7500	7076
North Paravoor	5075	5360	5650	5910	6250	6313	6070	5400	5400	5350	5463	5775	5668

(Coconut With Husk 2003-04 Contd..)

CENTRES	JUL	AUG	SEP	OCT	NOV	DEC	JAN	FEB	MAR	APR	MAY	JUN	AVG
IDUKKI	6550	6720	7000	7040	7275	7525	7760	7300	7350	7240	7100	7200	7172
Thodupuzha													
THRISSUR	5000	5270	5525	6140	6300	6100	5840	5625	5675	5400	5550	5950	5698
Thrissur	4875	5000	4950	5500	5525	5519	5090	5045	5013	5130	5263	5600	5209
Kodungalloor	5263	5590	5700	6320	6750	6450	6350	6150	6000	6000	6063	6338	6081
Irinjalakuda													
PALAKKAD	5625	5840	6075	6460	6500	6225	6100	6225	6225	6080	6100	6200	6138
Palakkad	4000	4520	4625	5230	5450	5100	5080	5325	5188	5180	5150	5350	5017
Ponnani													
MALAPPURAM	-	1125	1233	1356	1350	1275	1250	1288	1308	1220	1219	1248	1261
Manjeri (Qul)													
KOZHICODE	3833	4260	4775	4880	5150	5100	4840	4900	4775	4600	4663	4900	4723
Kozhikode													
KANNUR	3875	4000	4000	4300	4875	5125	5480	5688	5763	5800	5800	6050	5063
Kannur	4475	4960	5100	5680	6000	5888	6000	6000	6000	5960	5500	5500	5589
Thalassery	-	-	-	-	-	-	NT	NT	6219	6180	6092	6493	6246
Thaliparambu													
KASARAGOD	4200	4800	5000	5100	5875	6125	6500	6500	6500	6500	6533	6525	5847
Kasaragod	5051	5224	5538	5889	6215	6072	5911	5751	5772	5707	5694	6035	5740
AVERAGE													

