

87 no. 1394



GOVERNMENT OF KERALA

REPORT ON THE  
RESULTS OF  
CROP CUTTING SURVEY  
ON PADDY-AUTUMN  
1988-89

DEPARTMENT OF  
ECONOMICS & STATISTICS  
THIRUVANANTHAPURAM  
1990



GOVERNMENT OF KERALA

\*  
\*\*  
\*\*\*  
\*\*\*\*  
\*\*\*\*\*  
\*\*\*\*\*  
\*\*\*\*\*  
\*\*\*  
\*\*  
\*

REPORT ON AUTUMN PADDY 1988-'89

\*  
\*\*  
\*\*\*  
\*\*\*\*  
\*\*\*\*\*  
\*\*\*\*\*  
\*\*\*  
\*\*  
\*

DEPARTMENT OF ECONOMICS AND STATISTICS

THIRUVANANTHAPURAM

1990



## FOREWORD

Since 1950, Crop Estimation Surveys on Paddy are being conducted by the Department regularly, separately for each season viz. Autumn (Virippu), Winter (Mundakan) and Summer (Punja). This report pertains to the period of Autumn paddy crop of 1988-'89. It deals with the object, area covered by the survey, the sampling techniques adopted, the results of the analysis of the data and the reliability of the results obtained from the survey.

This report was prepared in the Agricultural Statistics Division of the Department of Economics and Statistics.

Suggestions for the improvement of the report are welcome.

P.L. SREEDEVI AMMA,  
Director of Economics and Statistics.

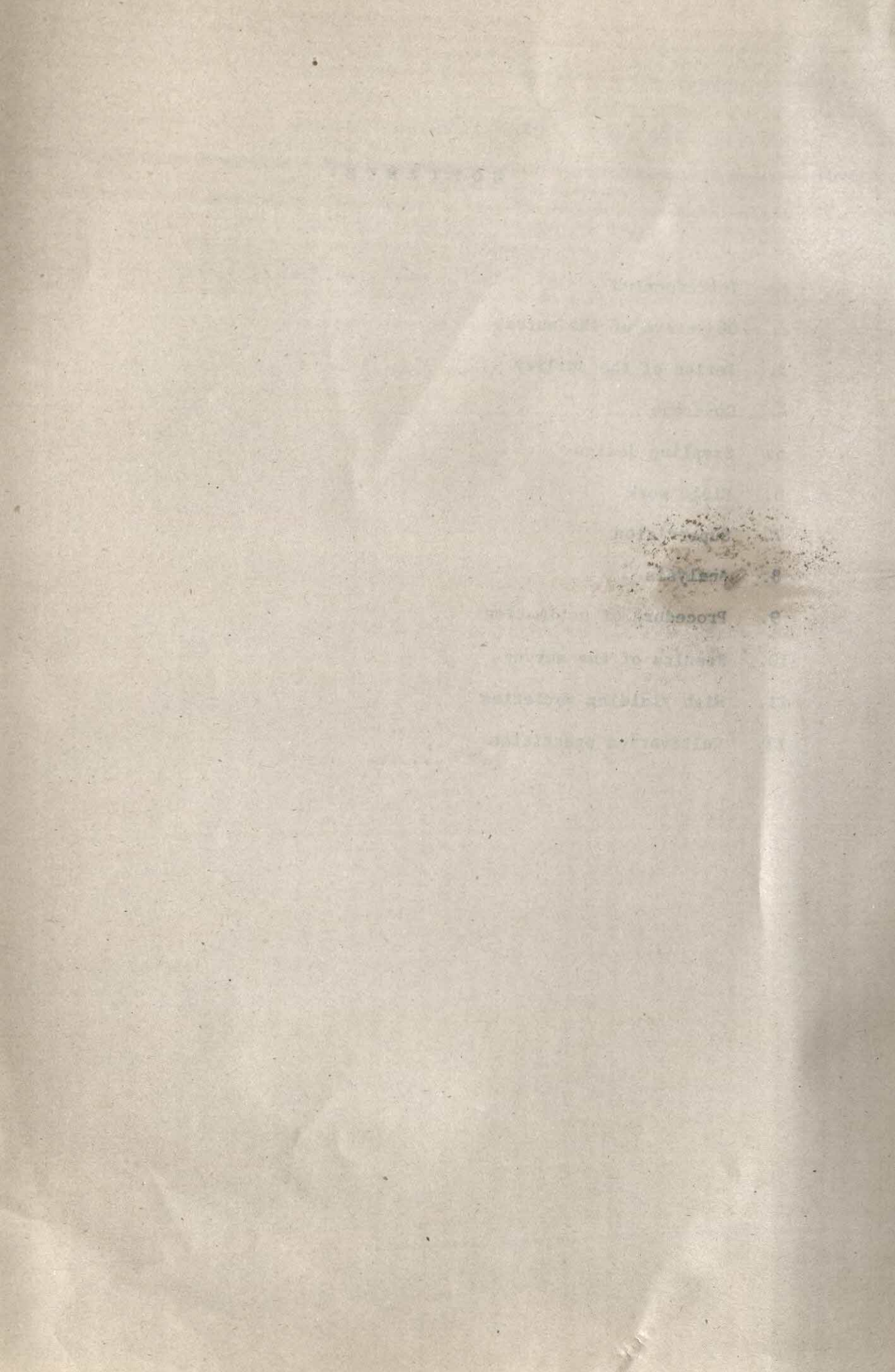
Thiruvananthapuram,  
6.6.1990.



## C O N T E N T S

1. Introduction
2. Objective of the survey
3. Period of the survey
4. Coverage
5. Sampling design
6. Field work
7. Supervision
8. Analysis
9. Procedure of estimation
10. Results of the survey
11. High yielding varieties
12. Cultivation practices

.....





## A P P E N D I X

1. Table 1. Block-wise estimates of area, meanyield and production of rice - Autumn 1988.
2. Table 2. Taluk-wise estimated meanyield of dry paddy - Autumn 1982-'88.
3. Table 3. District-wise estimated area, meanyield and production of high yielding and other varieties of paddy Autumn 1988.
4. Table 4. Block-wise number of experiments and meanyield of paddy according to cultural practicies - Autumn 1988.

.....



## 1. Introduction

The Department of Economics and Statistics is regularly conducting yield estimation surveys on the most important food crop viz. paddy in the state every year. The main objective of the sample survey is to estimate the meanyield as well as the total production in the state. The survey is conducted separately during each of the three seasons viz. Autumn (Virippu), Winter (Mundakan) and Summer (Punja) in a year.

This report deals with the survey on the Autumn crop of paddy in the agricultural year 1988-'89.

## 2. Objectives of the survey

The main objectives of the survey were:-

1. To estimate the meanyield per hectare of dry paddy at the Block, District and the State level for each season.
2. To estimate the meanyield per hectare of high yielding varieties of paddy at the district level.
3. To study the difference in yield of paddy according to various cultivation practices.

## 3. Period of the survey

The period of the survey was from July 1988 to October 1988. The field work for the survey was conducted during the period in all the Blocks where the crop was raised during the season.

## 4. Coverage

The survey was covered the whole state except the forest area.

## 5. Sampling design

The survey was conducted on a stratified sampling design. This is the second round since the sampling design was changed for framing block level estimates under the Scheme Establishment of an Agency for Reporting Agricultural Statistics. Prior to that the sampling design followed was Taluk-wise estimates.

Under the new system, Blocks are considered as strata and investigator zones in each block forming sub strata and the first stage unit. Paddy growing survey sub-divisions in the selected cluster for from the second stage unit. In each zone, a list of survey sub-divisions of wet and dry land plots growing paddy under HYV irrigated, HYV un-irrigated, local irrigated and local un-irrigated are

The Department of Economics and Statistics is regularly conducting yield estimation surveys on the most important food crop viz. paddy in the state every year. The main objective of the sample survey is to estimate the yield of the crop by using circular systematic sampling method from the list. One kandom each was chosen by simple random method after serially numbering them anti-clockwise starting from the southwest corner from the survey sub-divisions. The form the third stage unit. A square plot of side 5 meters located in the selected kandom formed the ultimate sample unit and the crop in the demarcated plot harvested, threshed, winnowed and weighed. The weight of the cleaned grains and other relevant details such as irrigation status, application of fertilizers, manure, insecticides, pesticides etc. were recorded in the prescribed schedule. In each investigator zone, 6 crop cutting experiments per season are to be conducted. However, in corporations to be conducted in a season are restricted to 5 and 10 respectively.

The district is divided into blocks in rural areas and Municipalities and Corporations in the Urban areas which are treated as stratum. These blocks are again divided into a number of investigator zones depending on the area of the block, nature of land etc. corporation area is divided into 3 investigator zones and Municipality with an area of 10 sq. kilometres and above are treated as one investigator zone. These investigator zones formed for the EARAS survey are treated as sub-stratum for the survey. The remaining small Municipalities are grouped with the adjoining blocks.

In each investigator zone, 100 clusters of 5 survey sub-division numbers as in the basic tax register are selected for the survey. These 100 clusters are allocated among the wet lands and dry lands in proportion to the area under these categories in the zone.

In each investigator zone, list of wet land survey sub-divisions and dry land survey sub-divisions as per the basic tax register is prepared separately in an orderly manner (one village after the other). For getting the required number of clusters from each list, equal number of survey sub-divisions from each list is selected using circular systematic sampling method. These plots will be the key plots for forming clusters. These key plots together with the two other adjacent plots on either side (left and right in the horizontal direction) stand facing it in south north direction from the cluster. The wet land clusters of 5 survey sub-divisions each are visited every paddy season in an agricultural year in an investigator zone for the collection of area under paddy during the season. From these paddy growing plots in a season, 6 survey sub-division numbers are selected for crop cutting survey.

From every block, three samples each weighing 250 gram of wet paddy were collected at the time of harvest for conducting drilage experiments. The first sample was taken at the beginning, the second towards the middle and the third towards the end of the harvest season.

These samples were dried and weighed. The drilage ratio thus obtained was utilized for the estimation of dry weight.

## 6. Field work

The field work of the survey was attended to by the investigators under the immediate supervision of the Taluk Statistical Inspectors and Taluk Statistical Officers. The Deputy Directors of the Districts were in overall charge for the proper and timely conduct of the survey assisted by the District Officers and Additional District Officers.

The total number of crop cutting experiments planned in the state during Autumn 1988 was 4419 and the percentage response was 96.65.

## 7. Superivision

The yield estimation survey was inspected at three stages ie. pre-harvest, harvest and post harvest by the Taluk level and District level Officers. The Statistical Inspectors and Taluk Statistical Officers were made responsible to inspect atleast one experiment in each investigator zone and Deputy Director, District Officer and Additional District Officer atleast one experiment in a block at the harvest stage. The Statistical Inspector/Additional Statistical Inspectors had to conduct atleast one harvest stage inspection in each investigator zone subject to a minimum of 5 experiments in a zone. Harvest stage inspections were conducted during Autumn 1988 to the extend of 20% of the experiments analysed. The percentage inspection at the pre-harvest stage during the season was 6.49.

## 8. Analysis

On completion of the surveys, for each season in each block the data collected were transmitted to the concerned district office of the Department, and the consolidated data were forwarded to the headquarters by the Deputy Directors. Tabulation and analysis of the data so collected were done in the Agricultural Statistics Division of the Directorate. The procedure adopted for estimation of various parameteres at Block, District and State level is described in the ensuring paragraphs.

## 9. Estimation

Mean yield of paddy, its Standard Error and production of rice were estimated from the data collected through the surveys and estimation of meanyield has been done separately for the following categories of paddy and weighted average is computed to obtain the meanyield of all varieties together.

1. Paddy High Yielding Varieties - Irrigated (HYV-I)
2.     -do-                             Un-irrigated (HYV-UI)
3. Paddy local varieties - Irrigated (L-I)
4.     -do-                             Un-irrigated (L-UI)

(i) Meanyield of paddy at Block Level:-

The following formula has been utilised to estimate meanyield of paddy at Block level.

$$\bar{x}_p = \frac{\sum_{j=1}^{np} x_{pj}}{np} \times 400 \times d, \text{ where}$$

np number of crop cutting experiments conducted on the Pth category paddy in the block.  $x_{pj}$  = weight of paddy (in Kg.) obtained from the jth experiment on the pth category paddy of the Block.

p = 1, 2, 3, 4 represents HYV-I, HYV-UI, Local-I, Local-UI respectively.

d = The weight of dry paddy per kg. of the harvested produce obtained through drriage experiments.

The experimental plot is  $\frac{1}{400}$  of a hectare and hence  $\frac{\bar{x}_p}{400}$  gives the meanyield of dry paddy per hectare of the pth category at block level.

Mean yield of dry paddy of the block for all categories taken together is obtained by computing the weighted average of the mean yield of all the four categories, weights being the proportion of area under paddy of the respective classification. This meanyield of dry paddy (all categories together) in Kg. per hectare of the Block is given by

$$\bar{x} = \frac{\sum_{p=1}^4 a_p \bar{x}_p}{\sum_{p=1}^4 a_p} \text{ where}$$

$$p = a_p$$

$a_p$  is the area under the pth category paddy in the Block. Meanyield of paddy for the district is obtained as the weighted average of the meanyield of the Blocks in the District, weights being the proportion of area under the crop in the respective blocks. So also mean yield of paddy for the state is computed as the weighted average meanyield of the districts, weights being the proportion of area under the crop in the respective districts.

(ii) Standard Error of Block meanyield

Standard error of meanyield - per hectare of the pth category of the block is computed using the following formula.

$$S_p = \frac{M.S.S}{np} \times 400 \times d, \text{ where}$$

$np$  = no. of crop cutting experiments conducted on  $p$ th category paddy of the block.

$$Mss = \frac{TSS}{np - 1}$$

$$TSS = \sum_{j=1}^{np} x_{pj}^2 - \frac{(\sum x_{pj})^2}{np}$$

$x_{pj}$  = The weight of harvested produce obtained from  $j$ th cut on the  $p$ th category paddy of the Block.

Then Standard of Error of the Block meanyield is given by

$$\sum_{p=1}^4 a_p \sqrt{\frac{\sum_{p=1}^4 (a_p s_p)^2}{p}}$$

Where  $a_p$  represents the area of  $p$ th category paddy in the block.

The Standard Error of the District meanyield is obtained similarly which is given by

$$S = \sqrt{\frac{\sum_{i=1}^n (a_i s_i)^2}{(\sum_{i=1}^n a_i)^2}}$$

$n$  = Number of Blocks in the District.

$a_i$  = Area under paddy in the  $i$ th block of the District.

$s_i$  = Standard Error of the  $i$ th Block meanyield.

Computation of the Standard Error of the State meanyield is also done utilising the same formula where  $n$  will represent the number of districts in the State,  $(a_i)$  area under paddy under  $i$ th district and ' $s_i$ ' the standard error of meanyield of the  $i$ th district.

## (iii) Production of rice

The estimate of meanyield obtained from crop cutting survey and that of area obtained from area enumeration under EARAS were utilised for computation of estimates on production of rice. The weight of clear rice is reckoned as 65.7% of dry paddy.

## 10. Results of the survey

## General

The total production of rice in the state during Autumn 1987 estimated was 387804 tonnes. The corresponding figure for the previous year was 422599 tonnes. It shows that the rice production in the state has declined under Autumn season to the tune of about 34795 tonnes which represent about 8.23%. This is mainly due to the decrease in the area of paddy cultivation from 240445 hectares in Autumn 1987 to 233172 hectares in Autumn 1988.

The estimated area, meanyield and its standard error and production of rice together with the number of crop cutting experiments analysed in each block during Autumn 1988 are given in Table 1 in the Appendix.

For facilitating comparison, the meanyield of paddy during the Autumn season in the state for 1987-'88 and 1988-'89 are furnished below and that of taluks and districts for the last six years are given in table 2 in the appendix.

Year	Crop season	Area under paddy	Meanyield Kg./hect.	Production of rice (tonnes)
1	2	3	4	5
1987	Autumn	240445	2661	420343
1988	Autumn	233172	2482	380244

During the period, the lowest yield rate of wet paddy obtained per hectare was 396 Kg. and in about 10% of the experimental plots had the highest yield rate of about 4000 Kg./hectare.

With a view to find out the driage ratio of dry paddy 502 driage experiments were conducted. The lowest driage ratio of 0.82 was obtained from Quilon District and the highest ratio of 0.93 from Kasaragode district. The driage ratio for the State for Autumn was estimated as 0.89.

## 11. High Yielding Varieties

Table 3 in the Appendix gives the estimated area, meanyield and



production of high yielding varieties and other varieties of paddy in each district and state during Autumn 1988. About 27% of the total area under paddy was brought under High Yielding Varieties. About 28% of the total out turn of rice in the state during the season was from the High Yielding Varieties. The average yield of high yielding varieties in the State showed an increased of about 9% over other varieties. The district-wise yield rates of High Yielding Varieties varied from 1845 Kg./hectare in Kozhikode district to 3548 Kg./hectare in Idukky district.

About 35% of the experimental plots covered by the survey were grown with High Yielding Varieties of paddy during Autumn 1988. High yielding varieties of paddy used in the order of cultivators preference were Jyothi, Jaya and Pavizham. The highest state average yield of 5276 Kg./hectare was from H4 cultivated in Idukky district. This was followed by 4789 Kg./hectare from the I.R.8 variety in Thiruvananthapuram district and 3834 Kg./hectare from 12x85 in Kottayam district. The names of HYV of paddy corresponding to the highest district average together with the highest mean yield and the number of experimental plots where the crop was raised in each district during Autumn 1988 are indicated in the table given below:

**District-wise high yielding varieties with highest average yield autumn 1988-'89**

S1. District No.	HYV corresponding to the highest average	Highest average yield of dry paddy Kg./hectare	No. of experimental plots where HYV is raised
1	2	3	4
1. Thiruvananthapuram	IR.8	4789	1
2. Kollam	Bharathi	3432	2
3. Pathanamthitta	Culture 28	3158	2
4. Alappuzha	Badra	3687	3
5. Kottayam	12x85	3834	12
6. Idukky	H4	5276	2
7. Ernakulam	Culture 3	4436	1
8. Thrissur	Triveni	2610	7
9. Palakkad	Triveni	3664	1
10. Malappuram	Sabari	3769	1
11. Kozhikode	Pavizham	2133	4
12. Wayanad	No Autumn Paddy		-
13. Kannur	Triveni	3374	1
14. Kasaragode	Triveni	3583	1

## 12. Cultivation practices

Autumn crop of paddy is considered to be mainly a rain crop. But irrigation is usually resorted to pre-sowing field operations of Autumn crop in certain parts of the State depending upon the availability of the rain.

It was reported that 10% of the experimental plots were irrigated during Autumn 1988. Chemical fertilizers were applied to about 98% of the irrigated plots. 2% of the irrigated plots were provided with other types of manures like farmyard manure, green manure, composit manure etc. Only negligible percentage of irrigated plots were left unmanured during the season.

As far as un-irrigated plots are concerned, nearly 85% of them, found to have been applied with chemical fertilizers; other types of manures were applied to about 13% of the plots and the remaining 3% of the plots received no manure of any sort.

It was reported that crops in about 45% of the experimental plots were treated with insecticides and pesticides though there was no report of severe attack of pests and diseases from any part of the state during the season under reference.

In the case of plots where high yielding varieties were grown, it was found that about 8% of them received irrigation during Autumn 1988. About 98% of the irrigated plots with High Yielding Varieties have been brought under chemical fertilizers. About 94% of the un-irrigated plots with High Yielding Varieties have received chemical fertilizers while other manures were applied to about 4% of the un-irrigated plots. However about 2% of the unirrigated plots with HYV are covered no manure during Autumn 1988.

Though there was no report of disease or pest attack of a considerable nature on the HYV crops in the state, it was found that 60% of the HYV plots were treated with pesticides or insecticides during the season under reference.

The estimated average yield of high yielding and other varieties of paddy in irrigated and un-irrigated plots, manured and un-manured plots and plots treated and not treated with insecticides and pesticides together with the number of experiments obtained in the survey under each of the categories in respect of Autumn crop of paddy 1988 are given in Table 4 in the Appendix.

Table 1 - Block-wise estimates of area, meanyield and production of rice Autumn 1988-'89

Sl. No.	Block and district	Planned	No. of experiments analysed	Area in hectare paddy	Mean-yield of dry paddy Kg./ha.	Standard error	Production of rice in tonnes
1	2	3	4	5	6	7	8
1.	Athiyannoor	18	17	362	2069	244	492
2.	Nemom	30	30	636	1989	121	831
3.	Parasala	24	24	859	2268	162	1280
4.	Perumkadavila	30	27	822	2935	151	1585
5.	Kazhakoottam	36	36	1056	2656	184	1843
6.	Thiruvananthapuram Rural	18	18	178	3181	153	372
7.	Nedumangad	30	28	426	2233	210	625
8.	Vellandadu	30	24	736	2606	229	1260
9.	Vamanapuram	30	30	1284	2531	158	2135
10.	Chirayinkil	18	18	657	2616	130	1129
11.	Varkala	24	23	885	2410	224	1401
12.	Kilimanoor	36	35	1800	2707	101	3201
	<b>Municipalities</b>						
13.	Attingal	10	10	176	3961	187	458
14.	Nedumangad	10	10	78	2576	146	132
15.	Varkala	10	10	70	2228	268	102
	<b>Corporation</b>						
16.	Thiruvananthapuram	18	18	175	3809	165	438
	<b>Thiruvananthapuram dist.</b>	<b>372</b>	<b>358</b>	<b>10200</b>	<b>2579</b>	<b>48</b>	<b>17284</b>
17.	Anchalaummoodu	12	12	43	1841	293	52
18.	Chittumala	18	17	364	2237	278	535
19.	Ithikara	28	28	949	2860	114	1783
20.	Mukhathala	18	18	603	1479	131	586
21.	Karunagappally	13	13	683	1659	662	475
22.	Chavara	23	23	266	1556	146	272
23.	Ochira (Portion)	12	12	451	1421	526	421
24.	Sasthamcotta (Portion)	24	24	1386	1814	127	1652
25.	Kottarakara	30	30	1508	2987	157	2959
26.	Vettikkavala	30	30	1902	2835	156	3543
27.	Chadayamangalam	30	30	1867	2689	142	3298
28.	Anchal	30	28	1586	2464	155	2567
29.	Pathanapuram	30	30	1306	2951	110	2532
	<b>Municipalities</b>						
30.	Punalur	10	10	348	2163	140	495
31.	Kollam	-	-	-	-	-	-
	<b>Kollam dist.</b>	<b>308</b>	<b>305</b>	<b>13262</b>	<b>2430</b>	<b>59</b>	<b>21170</b>
32.	Parakkode	24	24	1527	2666	173	2675

(Contd.)

1	2	3	4	5	6	7	8
33.	Pandalam(Portion)	18	18	399	1689	184	443
34.	Sasthamcotta(Portion)	6	6	366	2212	254	532
35.	Kulanada (Portion)	36	36	139	2738	138	250
36.	Konni	24	24	696	2517	159	1151
37.	Elanthoor	24	22	507	2771	140	923
38.	Ranni	18	18	2	2342	284	3
39.	Mallappally	24	23	175	2322	229	267
40.	Koipuram	24	24	76	2684	322	134
41.	Pulikeezh	18	18	184	1381	150	167
<b>Municipalities</b>							
42.	Pathanamthitta	10	10	149	2317	135	227
43.	Thiruvalla	10	9	14	1087	323	10
<b>Pathanamthitta dist.</b>		<b>236</b>	<b>232</b>	<b>4234</b>	<b>2438</b>	<b>87</b>	<b>6782</b>
44.	Thycattussery	18	17	568	1049	255	391
45.	Pattanakkad	18	17	1100	1286	215	929
46.	Kanjikuzhy	18	18	827	787	102	428
47.	Aryad	18	18	346	929	246	211
48.	Ambalapuzha	18	15	2107	2348	290	3251
49.	Haripad	18	18	2143	2254	326	3174
50.	Muthukulam	18	17	755	1350	223	670
51.	Ochira (Portion)	6	6	147	1294	288	125
52.	Chengannur	18	17	1235	2669	265	2166
53.	Kulanada (Portion)	6	6	298	3034	89	594
54.	Mavelikara	24	21	1168	1562	164	1199
55.	Bharanikavu	12	12	1169	1204	146	925
56.	Pandalam (Portion)	6	6	354	1942	192	452
57.	Veliyanad	18	15	3620	2947	327	7008
58.	Chamabakulam	18	16	7855	2848	120	14697
<b>Municipalities</b>							
59.	Alapuzha	10	9	276	2702	184	490
60.	Chengannur	10	10	73	2294	110	110
61.	Kayamkulam	10	10	145	897	289	85
62.	Mavelikara	10	9	38	1122	225	28
63.	Sherthalai	10	9	119	493	137	39
<b>Alapuzha dist.</b>		<b>284</b>	<b>266</b>	<b>24343</b>	<b>2312</b>	<b>76</b>	<b>36972</b>
64.	Madappally	29	28	502	2120	210	699
65.	Vazhoor	14	14	17	2282	169	25
66.	Kanajirappally	-	-	-	-	-	-
67.	Pampady	26	26	168	2401	295	265
68.	Ettumannur	30	30	2693	3263	243	5774
69.	Pallom	30	24	1271	2909	338	2429
70.	Uzhavoor	30	29	1436	2805	143	2646
71.	Lalam	30	30	463	2952	139	898
72.	Erattupettah	11	11	21	2827	133	39
73.	Vaikom	30	29	1298	2297	168	1959
74.	Kaduthuruthy	30	30	2151	2625	150	3710

(Contd.)

(Table 1 contd.)

1	2	3	4	5	6	7	8
	<b>Municipalities</b>						
75.	Changanacherry	7	7	16	2814	573	30
76.	Kottayam	-	-	-	-	-	-
77.	Palai	6	6	14	2718	273	25
	<b>Kottayam dist.</b>	<b>273</b>	<b>264</b>	<b>10050</b>	<b>2802</b>	<b>88</b>	<b>18499</b>
78.	Thodupuzha	30	30	688	3214	132	1433
79.	Elamdesom	30	26	1152	2975	136	2252
80.	Idukky	12	12	12	3678	252	29
81.	Arudai	-	-	13	3661	0	31
82.	Adimali	6	6	95	4518	97	282
83.	Devicolam	-	-	-	-	-	-
84.	Kattappana	-	-	-	-	-	-
85.	Nedumkandom	-	-	-	-	-	-
	<b>Municipalities</b>						
86.	Thodupuzha	10	9	212	2857	374	398
	<b>Idukky dist.</b>	<b>88</b>	<b>83</b>	<b>2172</b>	<b>3115</b>	<b>91</b>	<b>4445</b>
87.	Alangad	12	12	2064	2281	233	3093
88.	Angamaly	30	30	3200	2349	77	4938
89.	Edappally	12	12	1192	1747	243	1368
90.	Koovappady	30	30	2720	2495	113	4458
91.	Kothamangalam	36	36	2147	2919	105	4118
92.	Mulamthuruthy	24	23	976	2002	114	1284
93.	Muvattupuzha	30	30	1579	3248	129	3369
94.	Palluruthy	12	12	310	2105	212	429
95.	Pampakuda	36	36	1602	3223	127	3392
96.	Parakadavu	18	18	1749	2462	149	2829
97.	Parur	18	18	884	1558	123	905
98.	Vadavukode	30	30	2927	2341	117	4501
99.	Vazhakulam	34	34	2879	2349	144	4444
100.	Vypeen	18	18	512	2773	182	933
101.	Vyttila	12	12	75	2126	327	105
	<b>Municipalities</b>						
102.	Angamaly	10	10	330	2560	121	555
103.	Kothamangalam	10	10	215	1989	299	281
104.	Muvattupuzha	10	10	25	3105	942	51
105.	Perumbavoor	10	10	175	2322	179	267
106.	Thripunithura	10	10	68	1994	236	89
	<b>Corporation</b>						
107.	Cochin	18	18	35	1534	136	35
	<b>Ernakulam dist.</b>	<b>420</b>	<b>419</b>	<b>25664</b>	<b>2458</b>	<b>39</b>	<b>41444</b>
108.	Anthicaud	24	24	191	2239	42	281
109.	Cherpu	24	24	690	1935	231	877
110.	Ollukkara	30	27	2486	1963	166	3206
111.	Puzhakkal	36	29	1453	2450	188	2339
112.	Chowannur	24	24	3101	1995	174	4065
113.	Pazhayannur	30	30	4314	2048	137	5804
114.	Wadakkancherry	36	35	4874	2047	154	6554

(Contd.)

(Table 1 contd.)

1	2	3	4	5	6	7	8
115.	Chavakkadu	24	22	77	1285	117	65
116.	Mullassery	15	14	627	1517	183	625
117.	Thalikulam	18	18	43	1416	301	40
118.	Chalakydy	36	36	1242	2097	141	1711
119.	Irinjalakuda	24	23	414	1691	124	460
120.	Kodakara	24	23	1442	2275	146	2155
121.	Mala	30	30	2023	1874	102	2491
122.	Vellangallur	24	24	1228	1494	63	1205
123.	Kodungallur	6	6	5	357	136	1
124.	Mathilakom	18	18	62	678	151	28
<b>Municipalities</b>							
125.	Chowghat	-	-	120	1750	-	138
126.	Chalakydy	-	-	337	2060	-	456
127.	Irinjalakuda	-	-	120	1687	-	133
128.	Kodungallur	10	10	6	1201	187	5
129.	Thrissur	-	-	65	1967	-	84
	<b>Thrissur dist.</b>	<b>433</b>	<b>417</b>	<b>24920</b>	<b>1999</b>	<b>51</b>	<b>32723</b>
130.	Alathur	48	47	9890	3151	174	20475
131.	Kuzhalmannam	48	48	9890	3092	133	20090
132.	Palghat	42	42	9552	2897	160	18181
133.	Kollengode	48	47	12655	3794	306	31544
134.	Nenmara	18	18	2634	3521	305	6094
135.	Chittur	42	43	4881	3634	224	11654
136.	Mannarghat	54	52	4617	2371	138	7192
137.	Attappadi	-	-	-	-	-	-
138.	Sreekrishnapuram	42	34	4122	1968	166	5329
139.	Pattambi	48	37	4716	2051	78	6354
140.	Ottappalam	36	34	4594	2360	171	7122
141.	Thrithala	36	27	2484	1587	140	2590
<b>Municipalities</b>							
142.	Chitturthathamangalam	10	10	1527	3867	291	3880
143.	Palakkat	10	10	955	3548	423	2226
144.	Shornur	10	7	579	1611	260	613
	<b>Palakkad dist.</b>	<b>492</b>	<b>456</b>	<b>73096</b>	<b>2985</b>	<b>70</b>	<b>143344</b>
145.	Malappuram	36	36	1314	2065	103	1783
146.	Manjerry	30	29	1276	1892	136	1586
147.	Kondotty	42	42	1359	1665	102	1487
148.	Vandoor	48	48	2990	1951	100	3832
149.	Nilambur	24	24	2164	2593	115	3687
150.	Andathode	30	30	844	2182	139	1210
151.	Ponnani	24	24	923	1872	198	1135
152.	Perinthalmanna	42	41	2095	2042	75	2810
153.	Mankada	30	30	2230	2373	158	3477
154.	Thirurangadi	30	30	722	1408	107	668
155.	Vengara	36	36	494	1824	113	592

(Contd.)

(Table 1 contd.)

1	2	3	4	5	6	7	8
156.	Tirur	30	29	1672	1604	139	1762
157.	Kuttipuram	30	29	1097	1843	138	1328
158.	Thanur	30	29	981	1313	119	846
	<b>Municipalities</b>						
159.	Manjeri	10	10	512	2369	55	797
160.	Malappuram	10	10	76	2984	171	149
161.	Tirur	10	10	88	1381	118	80
	<b>Malappuram dist.</b>	<b>492</b>	<b>487</b>	<b>20837</b>	<b>1989</b>	<b>42</b>	<b>27229</b>
162.	Balussery	30	27	338	928	134	206
163.	Perambra	24	23	176	1401	211	162
164.	Meladi	24	22	108	832	119	59
165.	Panthalayini	18	14	162	658	102	70
166.	Kozhikode	24	22	176	1539	140	178
167.	Chelannur	24	22	173	933	102	106
168.	Koduvally	30	27	555	1635	175	596
169.	Kunnamangalam	30	27	646	1362	142	578
170.	Badagara	18	18	144	1501	237	142
171.	Thuneri	30	27	210	1225	119	169
172.	Kunnummel	28	25	25	1339	146	22
173.	Thodannur	24	23	59	1084	142	42
	<b>Municipalities</b>						
174.	Badagara	6	6	7	1305	170	6
	<b>Corporation</b>						
	Calicut	12	11	67	1136	111	50
	<b>Kozhikode dist.</b>	<b>322</b>	<b>294</b>	<b>2846</b>	<b>1276</b>	<b>55</b>	<b>2386</b>
176.	Kalpetta	-		No Autumn Paddy			
177.	Mananthavady			-do-			
178.	Sultan Battery			-do-			
	<b>Wayanad dist.</b>						
179.	Kuthuparambu	42	42	682	2223	93	996
180.	Peravoor	48	47	588	1913	97	739
181.	Iritty	54	54	1014	1957	85	1304
182.	Tellicherry	24	24	663	1793	154	781
183.	Kannur	12	12	293	2805	175	540
184.	Edakkad	36	36	813	2887	107	1542
185.	Thaliparambu	66	66	2888	2471	90	4689
186.	Payyannur	73	73	3825	2451	80	6159
187.	Irikkur	54	54	1216	2234	79	1785
	<b>Municipalities</b>						
188.	Tellicheery	10	10	3	1881	210	4
189.	Kannur	-	-	-	-	-	-
	<b>Kannur dist.</b>	<b>419</b>	<b>418</b>	<b>11985</b>	<b>2354</b>	<b>38</b>	<b>18539</b>

(Contd.)

(Table 1 contd.)

1	2	3	4	5	6	7	8
190.	Kanhangad	60	60	1319	2817	172	2441
191.	Neeleswar	72	72	2600	2390	109	4082
192.	Manjeswar	60	54	3024	2832	91	5627
193.	Kasaragode	78	76	1669	2829	113	3102
	<b>Municipalities</b>						
194.	Kasaragode	-	-	340	2713	0	606
195.	Kanhangad	10	10	611	2812	216	1129
	<b>Kasaragode dist.</b>	<b>280</b>	<b>272</b>	<b>9563</b>	<b>2704</b>	<b>52</b>	<b>16987</b>
	<b>Kerala State</b>	<b>4419</b>	<b>4271</b>	<b>233172</b>	<b>2531</b>	<b>25</b>	<b>387804</b>

Table 2 - Taluk-wise estimates of mean-yield of dry paddy (Kg./hect.) during autumn season from 1982-'88

Sl. No.	Taluk and district	1982	1983	1984	1985	1986	1987	1988
	1	2	3	4	5	6	7	8
1.	Neyyattinkara	2640	2671	2887	3430	3719	3210	2376
2.	Thiruvananthapuram	2500	2214	3084	3293	2670	2027	2919
3.	Nedumangad	2093	2201	2705	2541	2340	2653	2523
4.	Chirayinkil	2497	2255	2516	3441	2556	2547	2717
	<b>Thiruvananthapuram district</b>	<b>2419</b>	<b>2338</b>	<b>2761</b>	<b>3188</b>	<b>2826</b>	<b>2658</b>	<b>2620</b>
5.	Kollam	1858	1768	2003	1884	1931	2509	2202
6.	Kottarakara	2883	2387	2394	3490	2761	3333	2835
7.	Kunnathur	2659	1681	1716	2172	2302	2534	1814
8.	Pathanamparam	3525	3239	2945	3452	3156	3460	2633
9.	Pathanamthitta	2820	3174	-	-	-	-	-
10.	Karunagappally	2643	2410	1754	2078	1992	2041	1267
	<b>Kollam district</b>	<b>2715</b>	<b>2344</b>	<b>2219</b>	<b>2833</b>	<b>2534</b>	<b>2964</b>	<b>2420</b>
11.	Kozhencherry	-	-	2859	2662	3065	3456	2608
12.	Ranni	-	-	3224	2781	2891	2706	2545
13.	Adoor	-	-	3031	2132	2213	3435	2294

(Contd..)



(Table 2 contd.)

	1	2	3	4	5	6	7	8
14.	Thiruvalla	-	-	2336	1841	1220	2586	1648
15.	Mallappally	-	-	2464	1756	1383	2959	2373
	<b>Pathanamthitta dist.</b>	-	-	<b>2801</b>	<b>2167</b>	<b>2111</b>	<b>3316</b>	<b>2384</b>
16.	Karthigappally	1971	2822	1967	806	1811	2284	1585
17.	Mavelikkara	2090	2522	1742	1575	1562	2597	1524
18.	Chengannur	2872	2927	2090	2310	2053	2841	2610
19.	Thiruvalla	2577	2550	-	-	-	-	-
20.	Kuttanad	2902	2238	4297	2525	1490	4013	2784
21.	Ambalapuzha	630	3593	1999	2143	1358	2096	1867
22.	Sherthalai	1140	1214	1544	725	886	1156	957
	<b>Alappuzha district</b>	<b>2153</b>	<b>2464</b>	<b>2866</b>	<b>1492</b>	<b>1487</b>	<b>2758</b>	<b>2175</b>
23.	Changanacherry	3443	2708	2749	2044	1736	2565	2264
24.	Kanjirappally	2854	3905	2202	2558	3545	3801	1127
25.	Kottayam	3361	3980	3287	2178	2441	3880	2929
26.	Vaikom	3401	3314	3768	1298	2440	3141	2475
27.	Meenachil	2888	2488	2784	2702	2810	3128	2827
	<b>Kottayam district</b>	<b>3300</b>	<b>3391</b>	<b>3295</b>	<b>1881</b>	<b>2428</b>	<b>3391</b>	<b>2714</b>
28.	Peermade	3044	-	-	-	-	-	3661
29.	Devicolum	4498	2180	2526	3062	3573	2741	4502
30.	Udumbanchola	2995	-	2516	3064	3512	-	-
31.	Thodupuzha	3157	2712	3327	3042	3338	3476	3153
	<b>Idukky district</b>	<b>3603</b>	<b>2529</b>	<b>3071</b>	<b>3049</b>	<b>3406</b>	<b>3424</b>	<b>3215</b>
32.	Kothamangalam	2621	2619	2881	2539	2739	2946	2696
33.	Moovattupuzha	3258	2998	2894	2931	3309	3001	3227
34.	Cochin	2453	1844	1755	2199	1539	1254	2409
35.	Kanayannur	1593	2235	1995	2128	2206	1800	1886
36.	Kunnathunad	2371	1885	2517	2583	2465	2381	2412
37.	Alwaye	2620	2404	2892	2939	2151	2466	2381
38.	Parur	2248	1169	2276	2391	2108	2245	1908
	<b>Ernakulam district</b>	<b>2485</b>	<b>2172</b>	<b>2573</b>	<b>2625</b>	<b>2394</b>	<b>2357</b>	<b>2421</b>
39.	Cranganore	1420	905	358	657	971	1151	830
40.	Mukundapuram	2135	2174	2002	2112	2343	1946	1944
41.	Thrissur	2359	2392	1893	1787	2315	2418	2152
42.	Thalappally	1913	2173	1849	1992	2355	2205	2045
43.	Chowghat	1066	1811	1010	1600	1756	2090	1282
	<b>Thrissur district</b>	<b>1966</b>	<b>2144</b>	<b>1823</b>	<b>1951</b>	<b>2310</b>	<b>2163</b>	<b>1991</b>
44.	Chittur	45459	3791	4648	3601	3843	3859	3478
45.	Alathur	4150	3748	4006	3878	4226	4134	3106

(Contd.)

(Table 2 contd.)

	1	2	3	4	5	6	7	8
46.	Palakkad	3933	2956	3474	2956	2628	2568	3150
47.	Ottappalam	2079	1989	2137	2146	1908	1914	1985
48.	Mannarghat	2035	1836	1887	1810	1789	1799	2371
	<b>Palakkad district</b>	<b>3560</b>	<b>3040</b>	<b>3455</b>	<b>3058</b>	<b>3105</b>	<b>3044</b>	<b>2905</b>
49.	Perumthalmanna	1909	1883	2143	1798	2795	2090	2156
50.	Ponmani	2053	1912	1841	2063	2239	2113	2059
51.	Tirur	1444	1729	1816	1595	1683	1671	1601
52.	Ernad	1636	1619	1938	2072	2151	2116	2023
	<b>Malappuram dist.</b>	<b>1687</b>	<b>1726</b>	<b>1945</b>	<b>1906</b>	<b>2201</b>	<b>1996</b>	<b>1952</b>
53.	Kozhikode	1380	1490	1329	1882	1417	1573	1375
54.	Quilandy	1315	1393	1421	1110	1187	1316	976
55.	Badagara	1584	1242	863	2039	1587	1727	1235
56.	South Wayanad	-	-	-	-	-	-	-
	<b>Kozhikode district</b>	<b>1405</b>	<b>1406</b>	<b>1259</b>	<b>1661</b>	<b>1367</b>	<b>1526</b>	<b>1243</b>
57.	Vythiri	1377	-	-	-	1377	-	-
58.	Sultan Battery	-	-	1377	1377	1377	-	-
59.	Mananthody	1377	-	-	-	1377	-	-
	<b>Wayanad district</b>	<b>1377</b>	<b>-</b>	<b>1377</b>	<b>1377</b>	<b>1377</b>	<b>-</b>	<b>-</b>
60.	North Wayanad	-	-	-	-	-	-	-
61.	Tellicherry	1954	1634	1478	2401	18010	2428	1975
62.	Kannur	2191	1926	1952	2409	2543	2211	2715
63.	Taliparamba	1800	2041	1693	2251	2312	2178	2357
64.	Hosdurg	2326	2205	1969	2120	-	-	-
65.	Kasaragode	2112	2213	2376	2873	-	-	-
	<b>Kannur district</b>	<b>2071</b>	<b>2027</b>	<b>1935</b>	<b>2408</b>	<b>2278</b>	<b>2252</b>	<b>2380</b>
66.	Hosdurg	-	-	-	-	2164	2594	2604
67.	Kasaragode	-	-	-	-	2552	2799	2786
	<b>Kasaragode district</b>	<b>-</b>	<b>-</b>	<b>-</b>	<b>-</b>	<b>2361</b>	<b>2700</b>	<b>2700</b>
	<b>Kerala State</b>	<b>2571</b>	<b>2417</b>	<b>2623</b>	<b>2514</b>	<b>2488</b>	<b>2661</b>	<b>2482</b>

Table 3 - District-wise estimated area, mean-yield and production of high yielding and other varieties of paddy (autumn 1988-'89)

District/State	High yielding varieties			Other varieties			All varieties			
	Area (Hect.)	Mean-yield of dry paddy (Kg./Hect.)	Production of rice (in tonnes)	Area (hect.)	Mean-yield of dry paddy (Kg./Hect.)	Production of rice (in tonnes)	Area (hect.)	Mean-yield of dry paddy (Kg./Hect.)	Production of rice (in tonnes)	
	1	2	3	4	5	6	7	8	9	10
Thiruvananthapuram	2440	3052	4892	7760	2484	12666	10200	2620	17558	
Kollam	9847	2656	17182	3415	1739	3902	13262	2420	21084	
Pathanamthitta	2375	2558	3991	1859	2162	2641	4234	2884	6632	
Alappuzha	9470	1998	12432	14873	2288	22359	24343	2175	34791	
Kottayam	6869	2789	12585	3181	2554	5338	10050	2714	17923	
Idukki	323	3548	753	1849	3157	3835	2172	3215	4588	
Ernakulam	8178	2538	13634	17486	2367	27193	25664	2421	40827	
Thrissur	2934	2264	4364	21986	1954	28229	24920	1991	32593	
Palakkad	8855	3137	18249	64241	2873	121251	73096	2905	139500	
Malappuram	3881	2611	6658	16956	1801	20058	20837	1952	26716	
Kozhikode	626	1845	759	2220	1074	1566	2846	1243	2325	
Wayanad	-	-	-	-	-	-	-	-	-	-
Kannur	4965	2724	8886	7020	2137	9858	11985	2380	18744	
Kasaragode	1591	3480	3638	7972	2544	13325	9563	2700	16963	
<b>Kerala State</b>	<b>62354</b>	<b>2637</b>	<b>108023</b>	<b>170818</b>	<b>2426</b>	<b>272221</b>	<b>233172</b>	<b>2482</b>	<b>380244</b>	

Table 4 - BLOCK-WISE NUMBER OF EXPERIMENTS AND MEAN-YIELD OF PADDY (KG./HE.) ACCORDING TO VARIOUS CULTIVATION PRACTICES

(1988-'89)

District/ Block	Variety	I r r i g a t e d		U n - i r r i g a t e d														Treated		Mean- No. of yield	Mean- No. of yield		
		Chemically manured	Other manured	Chemically manured	Other manured	Total	Not manured	Not manured	Total	Chemicals with protection	Not treated with plant protection chemicals												
		No. of exp- eri- ments	Mean- No. of yield	No. of exp- eri- ments	Mean- No. of yield	No. of exp- eri- ments	Mean- No. of yield	No. of exp- eri- ments	Mean- No. of yield	No. of exp- eri- ments	Mean- No. of yield	No. of exp- eri- ments	Mean- No. of yield	No. of exp- eri- ments	Mean- No. of yield	No. of exp- eri- ments	Mean- No. of yield	No. of exp- eri- ments	Mean- No. of yield				
		1	2	3	4	5	6	7	8	9	10	11	12	13	14	15	16	17	18	19	20	21	22
Athiyanoor	HVV	1	3301	-	-	-	-	-	-	1	3301	1	2268	-	-	-	-	1	2268	1	3301	1	2268
	Local	8	1830	-	-	-	-	2	2503	10	1966	5	3298	-	-	-	-	5	3298	1	1596	14	2467
	Total	9	1994	-	-	-	-	2	2503	11	2086	6	3126	-	-	-	-	6	3126	2	2449	15	2454
Nemom	HVV	1	2249	-	-	-	-	-	-	1	2249	-	-	-	-	-	-	-	-	-	-	1	2249
	Local	29	1981	-	-	-	-	-	-	29	1981	-	-	-	-	-	-	-	-	14	1959	15	2004
	Total	30	1991	-	-	-	-	-	-	30	1991	-	-	-	-	-	-	-	-	14	1959	16	2019
Parassala	HVV	-	-	-	-	-	-	-	-	-	-	-	-	-	-	-	-	-	-	-	-	-	-
	Local	24	2268	-	-	-	-	-	-	24	2268	-	-	-	-	-	-	-	-	21	2281	3	2171
	Total	24	2268	-	-	-	-	-	-	24	2268	-	-	-	-	-	-	-	-	21	2281	3	2171
Perumkadavila	HVV	-	-	1	3048	-	-	-	-	1	3048	-	-	-	-	-	-	-	-	1	3048	-	-
	Local	26	2928	-	-	-	-	-	-	26	2928	-	-	-	-	-	-	-	-	14	3042	12	2798
	Total	26	2928	1	3048	-	-	-	-	27	2933	-	-	-	-	-	-	-	-	15	3043	12	2796
Kazhakkuttam	HVV	-	-	-	-	-	-	-	-	-	-	10	3066	-	-	-	-	-	-	6	3098	1	2775
	Local	-	-	-	-	-	-	-	-	-	-	26	2478	-	-	-	-	-	-	10	2361	16	2553
	Total	-	-	-	-	-	-	-	-	-	-	36	2642	-	-	-	-	-	-	19	2710	17	2566

(Contd.)

(Table 4 contd.)

1	2	3	4	5	6	7	8	9	10	11	12	13	14	15	16	17	18	19	20	21	22
Thiruvananthapuram (Rural)	HYV	-	-	-	-	-	-	-	-	2	3240	-	-	-	-	2	3240	-	-	2	3240
	Local	-	-	-	-	-	-	-	-	12	3026	-	-	4	3533	16	3156	9	3444	7	2783
	Total	-	-	-	-	-	-	-	-	14	3059	-	-	4	3533	18	3181	9	3444	9	2384
Nedumangad	HYV	-	-	-	-	-	-	-	-	5	2463	-	-	-	-	5	2463	4	2562	1	2068
	Local	-	-	-	-	-	-	-	-	20	2228	1	816	2	2195	23	2162	12	2178	11	2148
	Total	-	-	-	-	-	-	-	-	25	2275	1	816	2	2195	28	2217	16	2274	12	2141
Vellianad	HYV	-	-	-	-	-	-	-	-	2	4038	-	-	-	-	2	4038	2	4038	-	-
	Local	-	-	-	-	-	-	-	-	22	2485	-	-	-	-	22	2485	20	2527	2	2077
	Total	-	-	-	-	-	-	-	-	24	2606	-	-	-	-	24	2606	22	2664	2	2077
Vamanapuram	HYV	-	-	-	-	-	-	-	-	7	2604	-	-	-	-	7	2604	5	2608	2	2594
	Local	1	2612	-	-	-	-	1	2612	22	2404	-	-	-	-	22	2404	13	2487	10	2318
	Total	1	2612	-	-	-	-	1	2612	29	2453	-	-	-	-	29	2453	18	2520	12	2364
Chirayinkil	HYV	-	-	-	-	-	-	-	-	4	3472	-	-	-	-	4	3472	2	3949	2	2993
	Local	-	-	-	-	-	-	-	-	14	2463	-	-	-	-	14	2463	4	2771	10	2340
	Total	-	-	-	-	-	-	-	-	18	2687	-	-	-	-	18	2687	6	3164	12	2449
Varkala	HYV	-	-	-	-	-	-	-	-	4	3316	-	-	-	-	4	3316	-	-	4	3316
	Local	-	-	-	-	-	-	-	-	18	2249	1	1832	-	-	19	2228	-	-	19	2228
	Total	-	-	-	-	-	-	-	-	22	2443	1	1832	-	-	23	2410	-	-	23	2410
Kilimanoor	HYV	-	-	-	-	-	-	-	-	25	2899	-	-	-	-	15	2899	13	2946	2	2589
	Local	-	-	-	-	-	-	-	-	20	2576	-	-	-	-	20	2576	9	2822	11	2375
	Total	-	-	-	-	-	-	-	-	35	2707	-	-	-	-	35	2707	22	2896	13	2408

(Contd.)

(Table 4 contd.)

	1	2	3	4	5	6	7	8	9	10	11	12	13	14	15	16	17	18	19	20	21	22	
<b>Municipalities</b>																							
Attungal																							
	HYV										6	4121					6	4121	5	4205	1	3701	
	Local										4	3766					4	3766			4	3766	
Total											10	3951					10	3951	5	4205	5	3751	
Nedumangal																							
	HYV										3	3029					3	3029	3	3029			
	Local										7	2355					7	2355	7	2355			
Total											10	2576					10	2576	10	2576			
Varkala																							
	HYV																						
	Local										10	2228					10	2228	3	2800	7	1982	
Total											10	2228					16	2228	3	2800	7	1982	
Thiruvananthapuram Corporation																							
	HYV																						
	Local										17	3809					17	3809	6	3937	12	3744	
Total											17	3809					17	3809	6	3937	12	3744	
Thiruvananthapuram District																							
	HYV										3	2697						59	2963	45	3154	17	2891
	Local										90	2363					7	3203	206	2618	143	2574	
Total										93	2373						7	3203	265	2617	188	2713	
Anchalaimood																							
	HYV										7	2053						8	1919	5	2235	3	1395
	Local										2	2655						4	1714			4	1714
Total											9	2187					12	1841	5	2235	7	1576	
Chittumala																							
	HYV										2	1479						2	1479	1	1621	1	1333
	Local										15	2309						15	2309	2	1373	13	2401
Total											17	2237					17	2237	3	1456	14	2325	

(Contd.)

(Table 4 contd.)

1	2	3	4	5	6	7	8	9	10	11	12	13	14	15	16	17	18	19	20	21	22	
	HYV	-	-	-	-	-	-	-	-	12	3291	-	-	1	2878	13	3258	3	2339	10	3356	
	Local	-	-	-	-	-	-	-	-	5	2448	-	-	-	-	15	2448	5	2468	10	2438	
	Total	-	-	-	-	-	-	-	-	17	2823	-	-	1	2878	28	2860	8	2645	20	2897	
	HYV	-	-	-	-	-	-	-	-	5	1776	-	-	-	-	5	1776	1	1158	4	1931	
	Local	-	-	-	-	-	-	-	-	9	1421	-	-	4	1204	13	1353	-	-	13	1354	
	Total	-	-	-	-	-	-	-	-	14	1548	-	-	4	1204	18	1479	1	1158	17	1490	
	HYV	-	-	-	-	-	-	-	-	7	751	-	-	-	-	7	751	-	-	7	751	
	Local	-	-	-	-	-	-	-	-	11	1108	-	-	-	-	11	1108	2	648	9	1210	
	Total	-	-	-	-	-	-	-	-	18	1059	-	-	-	-	18	1059	2	648	16	1009	
	HYV	-	-	-	-	-	-	-	-	12	747	-	-	-	-	12	1747	1	695	11	1843	
	Local	-	-	-	-	-	-	-	-	4	1298	1	1456	1	404	6	1174	1	1125	5	1186	
	Total	-	-	-	-	-	-	-	-	16	1635	1	1456	1	404	18	1556	2	910	16	1637	
	HYV	-	-	-	-	-	-	-	-	8	1377	1	1350	-	-	-	9	1373	2	1657	7	1292
	Local	-	-	-	-	-	-	-	-	3	1515	-	-	-	-	3	1515	1	1528	2	1507	
	Total	-	-	-	-	-	-	-	-	11	1427	1	1350	-	-	12	1421	3	1614	9	1340	
	HYV	-	-	-	-	-	-	-	-	2	2342	-	-	-	-	2	2342	2	2342	-	-	
	Local	-	-	-	-	-	-	-	-	21	1810	1	1075	-	-	22	1776	3	1808	19	1772	
	Total	-	-	-	-	-	-	-	-	23	1857	1	1075	-	-	24	1814	5	2022	19	1772	
	HYV	-	-	-	-	-	-	-	-	30	2987	-	-	-	-	30	2987	12	3196	18	2848	
	Local	-	-	-	-	-	-	-	-	-	-	-	-	-	-	-	-	-	-	-	-	
	Total	-	-	-	-	-	-	-	-	30	2987	-	-	-	-	30	2987	12	3196	18	2848	

(Contd.)

(Table 4 contd.)

	2	3	4	5	6	7	8	9	10	11	12	13	14	15	16	17	18	19	20	21	22	
<b>Vettikkavala</b>																						
HYV																						
Local										29	2838					29	2838	7	2631	22	2906	
Total										29	2838					29	2838	7	2631	22	2906	
										1	2494					1	2494			1	2494	
										30	2835					30	2835	7	2631	23	2888	
<b>Chadayamangalam</b>																						
HYV																						
Local										30	2689					30	2689	14	3041	16	2380	
Total										30	2689					30	2689	14	3041	16	2380	
<b>Anchal</b>																						
HYV																						
Local										28	2464					28	2464	17	2703	11	2093	
Total										28	2464					28	2464	17	2703	11	2093	
<b>Pathanampuram</b>																						
HYV																						
Local										30	2951					30	2951	13	2722	17	3125	
Total										30	2951					30	2951	13	2722	17	3125	
<b>Municipalities</b>																						
<b>Punalur</b>																						
HYV																						
Local										10	2163					10	2163	9	2147	1	2316	
Total										10	2163					10	2163	9	2147	1	2316	
<b>Quilon</b>																						
HYV																						
Local																						
Total																						
<b>Quilon District</b>																						
HYV																						
Local										212	2544	2	1168	1	2878	215	2669	87	2661	128	2446	
Total										212	2544	2	1168	1	2878	215	2669	87	2661	128	2446	
										81	1875	4	1018	5	1044	90	1739	14	1747	76	1799	
										293	2480	6	1088	6	1350	305	2430	101	2534	204	2221	

(Contd.)



(Table 4 contd.)

	2	3	4	5	6	7	8	9	10	11	12	13	14	15	16	17	18	19	20	21	22	
Paracode																						
HYV											7	2657				7	2657	7	2657			
Local											17	2672				17	2672	12	3302	5	2072	
Total											24	2666				24	2666	19	2325	5	2072	
Pandalam (Portion)																						
HYV																						
Local											18	1689				18	1689	11	1799	7	1520	
Total											18	1639				18	1689	11	1799	7	1520	
Sasthamcotta (Portion)																						
HYV											1	2306				1	2306	1	2306			
Local											5	2175				5	2175	1	1264	4	1903	
Total											6	2212				6	2212	2	2785	4	1903	
Kulanada (Portion)																						
HYV											32	2764				32	2764	31	2754	1	3051	
Local											4	2387				4	2387	4	2387			
Total											36	2738				36	2738	35	2712	1	3051	
Konni																						
HYV											22	2556			1	2317	23	2547	21	2517	2	2874
Local											1	1118				1	1118			1	1118	
Total											23	2523			1	2377	24	2517	21	2517	3	2288
Elanthoor																						
HYV											21	2775				21	2775	15	2938	6	2365	
Local											1	2626				1	2626			1	2626	
Total											22	2771				22	2771	15	2938	7	2403	
Ranni																						
HYV											18	2342				18	2342	17	2279	1	3371	
Local																						
Total											18	2342				18	2342	17	2279	1	3371	
Malappally																						
HYV											10	2086				10	2086	10	2086			
Local											13	2650				13	2650	9	2996	4	1872	
Total											23	2322				23	2322	19	2516	4	1872	

(Contd.)

(Table 4 contd.)

	2	3	4	5	6	7	8	9	10	11	12	13	14	15	16	17	18	19	20	21	22
<b>Koipuram</b>																					
HYV		3	2484	-	-	-	-	3	2484	5	3140	-	-	-	-	5	3140	5	3140	-	-
Local		-	-	-	-	-	-	-	-	5	1972	-	-	1	1242	16	1927	13	1745	3	2712
Total		3	2484	-	-	-	-	3	2484	20	2264	-	-	1	1242	21	2215	18	2133	3	2712
<b>Pulikeezhu</b>																					
HYV		-	-	-	-	-	-	-	-	9	1483	-	-	-	-	9	1483	5	1607	4	1328
Local		-	-	-	-	-	-	-	-	9	1260	-	-	-	9	1260	5	1291	4	1220	-
Total		-	-	-	-	-	-	-	-	18	1381	-	-	-	18	1381	10	1449	8	1247	-
<b>Municipalities</b>																					
<b>Pathanamthitta</b>																					
HYV		-	-	-	-	-	-	-	-	10	2317	-	-	-	-	10	2317	8	2270	2	2501
Local		-	-	-	-	-	-	-	-	-	-	-	-	-	-	-	-	-	-	-	-
Total		-	-	-	-	-	-	-	-	10	2317	-	-	-	-	10	2317	8	2270	2	2501
<b>Thiruvalla</b>																					
HYV		-	-	-	-	-	-	-	-	3	1100	-	-	-	-	3	1100	1	958	2	1171
Local		-	-	-	-	-	-	-	-	6	1114	-	-	-	6	1114	1	671	5	1201	-
Total		-	-	-	-	-	-	-	-	9	1109	-	-	-	9	1109	2	814	7	1192	-
<b>Pathanamthitta</b>																					
HYV		3	2484	-	-	-	-	3	2484	138	2547	-	-	1	2377	139	2546	124	2465	18	2582
Local		-	-	-	-	-	-	-	-	89	2313	-	-	1	1242	90	2301	56	2222	34	1731
Total		3	2484	-	-	-	-	3	2484	227	2455	-	-	2	1809	229	2306	180	2390	52	2025
<b>Thycattusserry</b>																					
HYV		-	-	-	-	-	-	-	-	-	-	-	-	-	-	-	-	-	-	-	-
Local		-	-	-	-	-	-	-	-	7	1577	7	623	3	862	17	1050	2	3366	15	741
Total		-	-	-	-	-	-	-	-	7	1577	7	623	3	862	17	1050	2	3366	15	741
<b>Pattanakkad</b>																					
HYV		-	-	-	-	-	-	-	-	-	-	-	-	-	-	-	-	-	-	-	-
Local		-	-	-	-	-	-	-	-	6	256	6	2278	5	1335	17	1286	3	1368	14	1269
Total		-	-	-	-	-	-	-	-	6	256	6	2278	5	1335	17	1286	3	1368	14	1269

(Contd.)

(Table 4 contd.)

	2	3	4	5	6	7	8	9	10	11	12	13	14	15	16	17	18	19	20	21	22		
Kanjikuzhy	HYV	-	-	-	-	-	-	-	-	-	-	-	-	-	-	-	-	-	-	-	-	-	
	Local	-	-	-	-	-	-	-	-	5	558	9	992	4	576	18	787	-	-	-	18	787	
	Total	-	-	-	-	-	-	-	-	5	558	9	992	4	576	18	787	-	-	-	18	787	
Aryad	HYV	-	-	-	-	-	-	-	-	-	-	-	-	-	-	-	-	-	-	-	-	-	
	Local	-	-	-	-	-	-	-	-	14	1104	4	317	-	-	-	18	929	8	1556	10	428	
	Total	-	-	-	-	-	-	-	-	14	1104	4	317	-	-	-	18	929	8	1556	10	428	
Ambalapuzha	HYV	-	-	-	-	-	-	-	-	3	2949	-	-	-	-	3	2949	3	2949	-	-	-	
	Local	-	-	-	-	-	-	-	-	11	2386	1	248	-	-	12	2211	11	2388	1	248	1	248
	Total	-	-	-	-	-	-	-	-	14	2508	1	245	-	-	15	2348	14	2508	1	248	1	248
Haripad	HYV	-	-	-	-	-	-	-	-	17	2290	1	1630	-	-	18	2254	15	2219	15	2219	3	2424
	Local	-	-	-	-	-	-	-	-	-	-	-	-	-	-	-	-	-	-	-	-	-	
	Total	-	-	-	-	-	-	-	-	17	2290	1	1630	-	-	18	2254	15	2219	15	2219	3	2424
Muthukulam	HYV	-	-	-	-	-	-	-	-	15	1423	1	1471	1	159	17	1350	7	1683	7	1683	10	1120
	Local	-	-	-	-	-	-	-	-	-	-	-	-	-	-	-	-	-	-	-	-	-	
	Total	-	-	-	-	-	-	-	-	15	1423	1	1471	1	159	17	1350	7	1683	7	1683	10	1120
Ochira (Portion)	HYV	-	-	-	-	-	-	-	-	3	1159	-	-	-	-	3	1159	3	1159	-	-	-	-
	Local	-	-	-	-	-	-	-	-	3	1683	-	-	-	-	3	1683	-	-	-	3	1683	
	Total	-	-	-	-	-	-	-	-	6	1294	-	-	-	-	6	1294	3	1159	3	1683	3	1683
Chengannur	HYV	-	-	-	-	-	-	-	-	11	2527	-	-	-	-	11	2527	10	2591	10	2591	1	1878
	Local	-	-	-	-	-	-	-	-	6	2853	-	-	-	-	6	2853	5	3310	5	3310	1	567
	Total	-	-	-	-	-	-	-	-	17	2663	-	-	-	-	17	2663	15	2830	15	2830	2	1223

(Contd.)

(Table 4 contd.)

	2	3	4	5	6	7	8	9	10	11	12	13	14	15	16	17	18	19	20	21	22
Kulanada (Portion)	HYV	-	-	-	-	-	-	-	-	3	3105	-	-	-	-	3	3105	3	3105	-	-
	Local	-	-	-	-	-	-	-	-	3	2970	-	-	-	-	3	2970	3	2970	-	-
	Total	-	-	-	-	-	-	-	-	6	3034	-	-	-	-	6	3034	6	3034	-	-
Mavelikara	HYV	-	-	-	-	-	-	-	-	11	1545	-	-	-	-	11	1545	7	1455	4	1708
	Local	-	-	-	-	-	-	-	-	10	1613	-	-	-	-	10	1613	6	1894	4	1187
	Total	-	-	-	-	-	-	-	-	21	1562	-	-	-	-	21	1562	13	1657	8	1448
Bharanicut	HYV	-	-	-	-	-	-	-	-	1	1754	-	-	-	-	1	1754	-	-	1	1754
	Local	-	-	-	-	-	-	-	-	11	1191	-	-	-	-	11	1191	4	1442	7	1046
	Total	-	-	-	-	-	-	-	-	12	1204	-	-	-	-	12	2404	4	1442	8	1134
Pandalam (Portion)	HYV	-	-	-	-	-	-	-	-	-	-	-	-	-	-	-	-	-	-	-	-
	Local	-	-	-	-	-	-	-	-	6	1942	-	-	-	-	6	1942	2	2330	4	1750
	Total	-	-	-	-	-	-	-	-	6	1942	-	-	-	-	6	1942	2	2330	4	1750
Vellayanad	HYV	-	-	-	-	-	-	-	-	4	2981	-	-	-	-	4	2981	3	2540	1	4306
	Local	-	-	-	-	-	-	-	-	11	2920	-	-	-	-	11	2920	3	2540	2	3517
	Total	-	-	-	-	-	-	-	-	15	2947	-	-	-	-	15	2947	12	2726	3	3780
Chmapakulam	HYV	-	-	-	-	-	-	-	-	7	1673	-	-	-	-	7	1673	7	1673	-	-
	Local	-	-	-	-	-	-	-	-	9	3402	-	-	-	-	9	3402	9	3402	-	-
	Total	-	-	-	-	-	-	-	-	16	2848	-	-	-	-	16	2848	16	2848	-	-
<b>Municipalities</b>																					
Alapuzha	HYV	-	-	-	-	-	-	-	-	4	3847	-	-	-	-	4	3847	4	3847	-	-
	Local	-	-	-	-	-	-	-	-	5	2406	-	-	-	-	5	2406	5	2406	-	-
	Total	-	-	-	-	-	-	-	-	9	2702	-	-	-	-	9	2702	9	2702	-	-

(Contd.)

(Table 4 contd.)

	2	3	4	5	6	7	8	9	10	11	12	13	14	15	16	17	18	19	20	21	22	
Chengannur																						
HYV	-	-	-	-	-	-	-	-	-	2	2403	-	-	-	-	2	2403	2	2403	-	-	-
Local	-	-	-	-	-	-	-	-	-	8	2279	-	-	-	-	8	2279	-	-	8	2279	-
Total	-	-	-	-	-	-	-	-	-	10	2294	-	-	-	-	10	2294	2	2403	8	2279	-
Kayamkulam																						
HYV	-	-	-	-	-	-	-	-	-	7	1277	3	12	-	-	10	897	5	1445	5	351	-
Local	-	-	-	-	-	-	-	-	-	-	-	-	-	-	-	-	-	-	-	-	-	-
Total	-	-	-	-	-	-	-	-	-	7	1277	3	12	-	-	10	897	5	1445	5	351	-
Mavelikara																						
HYV	6	1115	1	638	-	-	-	7	1045	-	-	-	-	-	-	-	-	5	1206	2	649	-
Local	2	1403	-	-	-	-	-	2	1403	-	-	-	-	-	-	-	-	-	-	2	1403	-
Total	8	1186	1	638	-	-	-	9	1125	-	-	-	-	-	-	-	-	5	1206	4	1025	-
Sherthala																						
HYV	-	-	-	-	-	-	-	-	-	-	-	-	-	-	-	-	-	-	-	-	-	-
Local	-	-	-	-	-	-	-	-	-	4	411	5	559	-	-	9	493	-	-	9	493	-
Total	-	-	-	-	-	-	-	-	-	4	411	5	559	-	-	9	493	-	-	9	493	-
Atapuzha																						
HYV	6	1115	1	638	-	-	-	7	1045	88	2227	5	627	1	159	94	2120	74	2083	27	1344	-
Local	2	1403	-	-	-	-	-	2	1403	119	2978	32	977	12	964	163	2437	67	2456	98	1069	-
Total	8	1186	1	638	-	-	-	9	1125	207	2658	37	930	13	902	257	2312	141	2260	125	1128	-
Madappally																						
HYV	-	-	-	-	-	-	-	-	-	27	2099	1	2680	-	-	28	2120	25	2177	3	1638	-
Local	-	-	-	-	-	-	-	-	-	-	-	-	-	-	-	-	-	-	-	-	-	-
Total	-	-	-	-	-	-	-	-	-	27	2099	1	2680	-	-	28	2120	25	2177	3	1638	-
Vazhoor																						
HYV	-	-	-	-	-	-	-	-	-	13	2277	-	-	1	2347	14	2282	13	2277	1	2347	-
Local	-	-	-	-	-	-	-	-	-	-	-	-	-	-	-	-	-	-	-	-	-	-
Total	-	-	-	-	-	-	-	-	-	13	2277	-	-	1	2347	14	2282	13	2277	1	2347	-

(Contd.)

(Table 4 contd.)

	2	3	4	5	6	7	8	9	10	11	12	13	14	15	16	17	18	19	20	21	22
Kanjirappally	HYV	-	-	-	-	-	-	-	-	-	-	-	-	-	-	-	-	-	-	-	-
	Local	-	-	-	-	-	-	-	-	-	-	-	-	-	-	-	-	-	-	-	-
	Total	-	-	-	-	-	-	-	-	-	-	-	-	-	-	-	-	-	-	-	-
Pampady	HYV	-	-	-	-	-	-	-	-	15	2285	-	-	-	-	15	2285	12	2574	3	1111
	Local	-	-	-	-	-	-	-	-	9	3267	-	-	-	-	9	3267	9	3267	-	-
	Total	-	-	-	-	-	-	-	-	24	2401	-	-	-	-	24	2401	21	2871	3	1111
Ettumanur	HYV	-	-	-	-	-	-	-	-	29	3264	-	-	-	-	29	3264	23	3310	6	3095
	Local	-	-	-	-	-	-	-	-	1	2089	-	-	-	-	1	2089	1	2089	-	-
	Total	-	-	-	-	-	-	-	-	30	3263	-	-	-	-	30	3263	24	3259	6	3095
Pallom	HYV	-	-	-	-	-	-	-	-	21	2914	-	-	-	-	21	2914	20	2971	1	1735
	Local	-	-	-	-	-	-	-	-	3	2704	-	-	-	-	3	2704	3	2704	-	-
	Total	-	-	-	-	-	-	-	-	24	2909	-	-	-	-	24	2909	23	2936	1	1735
Uzhavoor	HYV	4	2804	-	-	-	-	4	2804	6	2722	1	2457	-	-	7	2684	10	2755	1	2464
	Local	-	-	-	-	-	-	-	-	18	2900	-	-	-	-	18	2900	18	2900	-	-
	Total	4	2804	-	-	-	-	4	2804	24	2855	1	2457	-	-	25	2839	28	2848	1	2464
Latham	HYV	1	739	-	-	-	-	1	739	15	2859	1	2319	-	-	16	2824	15	2783	2	2105
	Local	5	3405	-	-	-	-	5	3405	8	2828	-	-	-	-	8	2828	13	3050	-	-
	Total	6	2961	-	-	-	-	6	2961	23	2849	1	2319	-	-	24	2827	28	2907	2	2105
Erattupetta	HYV	-	-	-	-	-	-	-	-	7	2828	-	-	-	-	7	2828	3	2692	4	2929
	Local	-	-	-	-	-	-	-	-	4	2659	-	-	-	-	4	2659	2	2440	2	2878
	Total	-	-	-	-	-	-	-	-	11	2827	-	-	-	-	11	2827	5	2591	6	2912

(Contd.)

(Table 4 contd.)

Year	1993	1994	1995	1996	1997	1998	1999	2000	2001	2002						
Vaikom	HVV	-	-	-	-	22	2550	-	-	-	22	2550	21	2514	1	3264
	Local	-	-	-	-	7	2237	-	-	-	7	2237	7	2237	-	-
	Total	-	-	-	-	29	2297	-	-	-	29	2297	28	2444	1	3264
Kaduthuruthy	HVV	1	1993	-	-	9	2876	-	-	-	9	2876	9	2876	1	1993
	Local	-	-	-	-	20	2457	-	-	-	20	2457	18	2405	2	2936
	Total	1	1993	-	-	29	2588	-	-	-	29	2588	27	2563	3	2622
<b>Municipality</b>																
Changanacherry	HVV	-	-	-	-	7	2814	-	-	-	7	2814	4	2165	3	3682
	Local	-	-	-	-	-	-	-	-	-	-	-	-	-	-	-
	Total	-	-	-	-	7	2814	-	-	-	7	2814	4	2165	3	3682
Kottayam	HVV	-	-	-	-	-	-	-	-	-	-	-	-	-	-	-
	Local	-	-	-	-	-	-	-	-	-	-	-	-	-	-	-
	Total	-	-	-	-	-	-	-	-	-	-	-	-	-	-	-
Palai	HVV	3	2845	-	-	3	2845	-	-	-	3	2845	-	-	3	2845
	Local	3	2519	-	-	3	2519	-	-	-	3	2519	3	2519	-	-
	Total	6	2718	-	-	6	2718	-	-	-	6	2718	3	2519	3	2845
Kottayam District	HVV	9	2430	-	-	9	2430	175	2938	-	175	2938	155	2679	29	2556
	Local	8	2415	-	-	8	2415	70	2542	-	70	2542	74	2711	4	2907
	Total	17	2769	-	-	17	2769	245	2668	-	245	2668	229	2709	33	2598
Thodupuzha	HVV	2	2338	-	-	2	2338	6	3633	-	6	3633	7	3217	1	3938
	Local	2	3094	-	-	2	3094	20	3150	-	20	3150	11	1209	11	3174
	Total	4	2714	-	-	4	2714	26	3262	-	26	3262	18	3157	12	3238

(Contd.)

(Table 4 contd.)

	2	3	4	5	6	7	8	9	10	11	12	13	14	15	16	17	18	19	20	21	22
Elamdesam	HYV	-	-	-	-	-	-	-	-	-	2	2408	-	-	-	2	2408	1	1925	1	2888
	Local	3	2812	-	-	-	1	2555	4	2748	20	3066	-	-	-	20	3066	20	3091	4	2625
	Total	3	2812	-	-	-	1	2555	4	2748	22	3006	-	-	-	22	3006	21	3035	5	2678
Idukki	HYV	-	-	-	-	-	-	-	-	4	3486	-	-	-	-	4	3486	3	3156	1	4480
	Local	-	-	-	-	-	-	-	-	8	3735	-	-	-	-	8	3735	6	3557	2	4272
	Total	-	-	-	-	-	-	-	-	12	3678	-	-	-	-	12	3678	9	3423	3	4341
Arudai	HYV	-	-	-	-	-	-	-	-	-	-	-	-	-	-	-	-	-	-	-	-
	Local	-	-	-	-	-	-	-	-	-	-	-	-	-	-	-	-	-	-	-	-
	Total	-	-	-	-	-	-	-	-	-	-	-	-	-	-	-	-	-	-	-	-
Adimalai	HYV	-	-	-	-	-	-	-	-	2	5278	-	-	-	-	2	5278	-	-	2	5278
	Local	-	-	-	-	-	-	-	-	4	3661	-	-	-	-	4	3661	-	-	4	3661
	Total	-	-	-	-	-	-	-	-	6	4518	-	-	-	-	6	4518	-	-	6	4518
Devicottam	HYV	-	-	-	-	-	-	-	-	-	-	-	-	-	-	-	-	-	-	-	-
	Local	-	-	-	-	-	-	-	-	-	-	-	-	-	-	-	-	-	-	-	-
	Total	-	-	-	-	-	-	-	-	-	-	-	-	-	-	-	-	-	-	-	-
Kattappana	HYV	-	-	-	-	-	-	-	-	-	-	-	-	-	-	-	-	-	-	-	-
	Local	-	-	-	-	-	-	-	-	-	-	-	-	-	-	-	-	-	-	-	-
	Total	-	-	-	-	-	-	-	-	-	-	-	-	-	-	-	-	-	-	-	-
Nedumkantom	HYV	-	-	-	-	-	-	-	-	-	-	-	-	-	-	-	-	-	-	-	-
	Local	-	-	-	-	-	-	-	-	-	-	-	-	-	-	-	-	-	-	-	-
	Total	-	-	-	-	-	-	-	-	-	-	-	-	-	-	-	-	-	-	-	-

(Contd.)



(Table 4 contd.)

	2	3	4	5	6	7	8	9	10	11	12	13	14	15	16	17	18	19	20	21	22	
<b>Municipality</b>																						
<b>Thodupuzha</b>																						
HYV		1	4235	-	-	-	-	1	4235	1	2132	-	-	-	-	-	1	2132	1	4235	1	2132
Local		4	2671	-	-	-	-	4	2671	3	3003	-	-	-	-	-	3	3063	7	2837	-	-
Total		5	2982	-	-	-	-	5	2982	4	2830	-	-	-	-	-	4	2830	8	3012	1	2132
<b>Idukky district</b>																						
HYV		3	3081	-	-	-	-	3	3081	15	3476	-	-	-	-	-	15	3476	12	3179	6	3998
Local		9	2811	-	-	1	2555	10	2734	55	3119	-	-	-	-	-	55	3119	44	3121	21	3267
Total		12	2830	-	-	1	2555	13	2827	70	3304	-	-	-	-	-	70	3304	56	3133	27	3429
<b>Atangad</b>																						
HYV		-	-	-	-	-	-	-	-	3	2446	-	-	-	-	-	3	2446	-	-	3	2446
Local		4	2188	-	-	-	-	4	2188	5	2105	-	-	-	-	-	5	2105	8	2072	1	2694
Total		4	2188	-	-	-	-	4	2188	8	2233	-	-	-	-	-	8	2233	8	2072	4	2509
<b>Angamaly</b>																						
HYV		3	2364	-	-	-	-	3	2364	8	2619	-	-	-	-	-	8	2619	10	2523	1	2802
Local		3	2004	-	-	-	-	3	2004	16	2360	-	-	-	-	-	16	2360	19	2303	-	-
Total		6	2184	-	-	-	-	6	2184	24	2445	-	-	-	-	-	24	2445	29	2379	1	2802
<b>Edappally</b>																						
HYV		-	-	-	-	-	-	-	-	-	-	1	1904	1	934	2	1419	-	-	-	2	1419
Local		-	-	-	-	-	-	-	-	4	1150	3	1826	3	2611	10	1792	-	-	-	10	1792
Total		-	-	-	-	-	-	-	-	4	1150	4	1845	4	2192	12	1747	-	-	-	12	1747
<b>Koovappady</b>																						
HYV		14	2543	-	-	-	-	14	2543	13	1455	-	-	-	-	-	13	1453	23	2573	4	2276
Local		1	2511	-	-	-	-	1	2511	15	2533	-	-	-	-	-	15	2533	23	2573	3	2263
Total		15	2541	-	-	-	-	15	2541	15	2533	-	-	-	-	-	15	2533	23	2573	7	2271
<b>Kothamangalam</b>																						
HYV		6	2514	-	-	-	-	6	2514	9	3136	-	-	-	-	-	9	3136	13	2795	2	3490
Local		6	2910	-	-	-	-	6	2910	15	2956	-	-	-	-	-	15	2956	17	2897	4	3139
Total		12	2713	-	-	-	-	12	2713	24	3024	-	-	-	-	-	24	3024	30	2853	6	3256

(Contd.)

(Table 4 contd.)

1	2	3	4	5	6	7	8	9	10	11	12	13	14	15	16	17	18	19	20	21	22
Milanthuruthy	HV	-	-	-	-	-	-	-	-	7	2724	1	1203	1	1710	9	2417	8	2480	1	1904
	Local	-	-	-	-	-	-	-	-	9	2135	5	1323	-	-	14	1846	7	2132	7	1559
	Total	-	-	-	-	-	-	-	-	16	2393	6	1264	1	1710	23	2069	15	2318	8	1602
Muvattupuzha	HV	11	3208	-	-	-	-	11	3208	-	-	-	-	-	-	-	-	10	3085	1	4436
	Local	19	3265	-	-	-	-	19	3265	-	-	-	-	-	-	-	-	14	3204	5	3433
	Total	30	3244	-	-	-	-	30	3244	-	-	-	-	-	-	-	-	24	3154	6	3600
Palluruthy	HV	-	-	-	-	-	-	-	-	-	-	-	-	-	-	-	-	-	-	-	-
	Local	-	-	-	-	-	-	-	-	12	2105	-	-	-	-	12	2105	2	2399	10	2044
	Total	-	-	-	-	-	-	-	-	12	2105	-	-	-	-	12	2105	2	2399	10	2044
Pampakuda	HV	24	3150	-	-	-	-	24	3150	-	-	-	-	-	-	-	-	23	3146	1	3233
	Local	12	3344	-	-	-	-	12	3344	-	-	-	-	-	-	-	-	11	3372	1	3053
	Total	36	3223	-	-	-	-	36	3223	-	-	-	-	-	-	-	-	34	3219	2	3143
Parakkadavu	HV	1	3053	-	-	-	-	1	3053	-	-	-	-	-	-	-	-	1	3053	-	-
	Local	12	2381	-	-	-	-	12	2381	5	2575	-	-	-	-	5	2575	12	2329	5	2700
	Total	13	2433	-	-	-	-	13	2433	5	2575	-	-	-	-	5	2575	13	2385	5	2700
Parur	HV	-	-	-	-	-	-	-	-	4	1663	-	-	-	-	4	1663	4	1663	-	-
	Local	-	-	-	-	-	-	-	-	9	1542	1	2191	4	1419	14	1552	4	1868	10	1427
	Total	-	-	-	-	-	-	-	-	13	1579	1	2191	41	1419	18	1558	8	1765	10	1427
Vadavucode	HV	1	2299	-	-	-	-	1	2299	11	2435	-	-	-	-	11	2435	10	2324	2	2917
	Local	8	2076	-	-	-	-	8	2076	10	2493	-	-	-	-	10	2493	14	2246	4	2630
	Total	9	2101	-	-	-	-	9	2101	21	2465	-	-	-	-	21	2463	24	2293	6	2726

(Contd.)

Table 4 contd.)

1	2	3	4	5	6	7	8	9	10	11	12	13	14	15	16	17	18	19	20	21	22	
Vazhakulam	HYV	5	2202	-	-	-	-	5	2202	3	1894	-	-	-	-	3	1894	4	1757	4	2414	
	Local	14	2730	-	-	-	-	14	2730	8	2398	4	1625	-	-	12	2141	19	2509	7	2013	
	Total	19	2478	-	-	-	-	19	2478	11	2260	4	1625	-	-	15	2091	23	2379	11	2159	
Vypeen	HYV	-	-	-	-	-	-	-	-	-	-	-	-	-	-	-	-	-	-	-	-	
	Local	-	-	-	-	-	-	-	-	18	2773	-	-	-	-	18	2773	-	-	18	2773	
	Total	-	-	-	-	-	-	-	-	18	2773	-	-	-	-	18	2773	-	-	18	2773	
Vythila	HYV	-	-	-	-	-	-	-	-	-	-	-	-	-	-	-	-	-	-	-	-	
	Local	-	-	-	-	-	-	-	-	1	259	-	-	-	11	2295	12	2126	-	-	12	2126
	Total	-	-	-	-	-	-	-	-	1	259	-	-	-	11	2295	12	2126	-	-	12	2126
<b>Municipalities</b>																						
Angamaly	HYV	3	2590	-	-	-	-	3	2590	-	-	-	-	-	-	-	-	3	2590	-	-	
	Local	7	2554	-	-	-	-	7	2554	-	-	-	-	-	-	-	-	7	2554	-	-	
	Total	10	2560	-	-	-	-	10	2560	-	-	-	-	-	-	-	-	10	2560	-	-	
Kothamangalam	HYV	-	-	-	-	-	-	-	-	5	2443	-	-	-	-	5	2443	5	2443	-	-	
	Local	-	-	-	-	-	-	-	-	5	1458	-	-	-	-	5	1458	3	2293	2	207	
	Total	-	-	-	-	-	-	-	-	10	1989	-	-	-	-	10	1989	8	2386	2	207	
Muvattupuzha	HYV	8	3259	-	-	-	1	1297	8	3042	-	-	-	-	-	-	-	8	3021	1	3200	
	Local	1	3355	-	-	-	-	-	1	3355	-	-	-	-	-	-	-	1	3355	-	-	
	Total	9	3270	-	-	-	1	1297	9	3105	-	-	-	-	-	-	-	9	3058	1	3200	

(Contd.)

(Table 4 contd.)

1	2	3	4	5	6	7	8	9	10	11	12	13	14	15	16	17	18	19	20	21	22
Perumbavoor	HV	2	3107	-	-	-	-	2	3107	-	-	-	-	-	-	-	-	2	3107	-	-
	Local	8	2170	-	-	-	-	8	2170	-	-	-	-	-	-	-	-	6	2314	2	1733
	Total	10	2322	-	-	-	-	10	2322	-	-	-	-	-	-	-	-	8	2512	2	1733
Thripunithura	HV	-	-	-	-	-	-	-	-	-	-	-	-	-	-	-	-	-	-	-	-
	Local	-	-	-	-	-	-	-	-	-	-	5	2148	5	1839	10	1994	4	2021	6	1976
	Total	-	-	-	-	-	-	-	-	-	-	5	2148	5	1839	10	1994	4	2021	6	1976
Corporation of Cochin	HV	-	-	-	-	-	-	-	-	-	-	-	-	-	-	-	-	-	-	-	-
	Local	-	-	-	-	-	-	-	-	16	1593	2	1069	-	-	18	1534	2	1123	16	1586
	Total	-	-	-	-	-	-	-	-	16	1593	2	1069	-	-	18	1534	2	1123	16	1586
Ernakulam District	HV	78	2886	-	-	1	1297	79	2708	63	2532	2	1437	2	1322	67	2464	124	2694	22	2606
	Local	95	2588	-	-	-	-	95	2588	135	2205	20	1683	23	2085	178	2131	150	2519	123	2117
	Total	173	2800	-	-	1	1297	174	2791	198	2309	22	1661	25	2024	245	2222	274	2599	145	2191
Anthi/aud	HV	-	-	-	-	-	-	-	-	22	2443	-	-	-	-	22	2443	19	2520	3	1947
	Local	-	-	-	-	-	-	-	-	2	1165	-	-	-	-	2	1165	1	1064	1	1263
	Total	-	-	-	-	-	-	-	-	24	2239	-	-	-	-	24	2239	20	2447	4	1776
Cherpu	HV	-	-	-	-	-	-	-	-	11	2647	1	1782	1	902	13	2446	12	2575	1	902
	Local	-	-	-	-	-	-	-	-	10	1880	-	-	1	758	11	1779	9	1961	2	956
	Total	-	-	-	-	-	-	-	-	21	2282	1	1782	2	830	24	1935	21	2312	3	938
Ollurkara	HV	1	2637	-	-	-	-	1	2637	6	2214	1	1840	-	-	7	2122	5	2217	3	2225
	Local	1	1147	-	-	-	-	1	1147	16	1980	1	2706	1	79	18	1916	11	1995	8	1709
	Total	2	1892	-	-	-	-	2	1892	22	2044	2	2273	1	79	25	1983	16	2064	11	1850
Puzhakkal	HV	-	-	-	-	-	-	-	-	8	2024	-	-	-	-	8	2024	7	2085	1	1595
	Local	-	-	-	-	-	-	-	-	21	2518	-	-	-	-	21	2518	13	2861	8	1963
	Total	-	-	-	-	-	-	-	-	29	2450	-	-	-	-	29	2450	20	2589	9	1922

(Contd.)

(Table 4 contd.)

1	2	3	4	5	6	7	8	9	10	11	12	13	14	15	16	17	18	19	20	21	22
Chowammur	HW	-	-	-	-	-	-	-	-	8	1725	-	-	-	-	8	1725	8	1725	-	-
	Local	-	-	-	-	-	-	-	-	14	2063	2	2011	-	-	16	2057	6	2354	10	1878
	Total	-	-	-	-	-	-	-	-	22	1940	2	2011	-	-	24	1995	14	1994	10	1878
Pazhayammur	HW	-	-	-	-	-	-	-	-	4	2490	-	-	-	-	4	2490	2	2648	2	2331
	Local	-	-	-	-	-	-	-	-	25	2033	1	2006	-	-	26	2031	12	2221	14	1870
	Total	-	-	-	-	-	-	-	-	29	2096	1	2006	-	-	30	2048	14	2282	16	1928
Wadakkancherry	HW	-	-	-	-	-	-	-	-	2	2771	-	-	-	-	2	2771	1	2425	1	3117
	Local	2	2641	-	-	-	-	2	2641	16	1816	14	2279	1	2244	31	2039	7	1979	26	2101
	Total	2	2641	-	-	-	-	2	2641	18	1922	14	2279	1	2244	33	2083	8	2035	27	2139
Chavaghat	HW	-	-	-	-	-	-	-	-	11	2277	-	-	-	-	11	2277	5	2137	6	2390
	Local	-	-	-	-	-	-	-	-	10	1131	1	307	-	-	11	1057	1	4528	10	709
	Total	-	-	-	-	-	-	-	-	21	1730	1	307	-	-	22	1285	6	2536	16	1339
Mullasserry	HW	-	-	-	-	-	-	-	-	2	2078	-	-	-	-	2	2078	2	2078	-	-
	Local	-	-	-	-	-	-	-	-	12	1476	-	-	-	-	12	1476	4	1663	8	1380
	Total	-	-	-	-	-	-	-	-	14	1517	-	-	-	-	14	1517	6	1802	8	1380
Thalikulam	HW	-	-	-	-	-	-	-	-	2	4763	4	1404	-	-	6	2526	2	4763	4	1404
	Local	-	-	-	-	-	-	-	-	4	1407	4	189	4	482	12	693	2	1434	10	546
	Total	-	-	-	-	-	-	-	-	6	2526	8	796	4	482	18	1416	4	2196	14	791
Chalakydy	HW	1	2850	-	-	-	-	1	2850	4	3136	-	-	1	1533	5	2814	6	2821	-	-
	Local	4	2259	-	-	-	-	4	2259	25	2061	1	180	-	-	26	1988	20	1283	10	3507
	Total	5	2376	-	-	-	-	5	2376	29	2209	1	180	1	1533	31	2122	26	1638	10	3507
Irinjalakuda	HW	-	-	-	-	-	-	-	-	2	1757	-	-	-	-	2	1757	1	1544	1	1966
	Local	-	-	-	-	-	-	-	-	21	1689	-	-	-	-	21	1689	9	1910	12	1523
	Total	-	-	-	-	-	-	-	-	23	1691	-	-	-	-	23	1691	10	1873	13	1557

(Contd.)

(Table 4 contd.)

1	2	3	4	5	6	7	8	9	10	11	12	13	14	15	16	17	18	19	20	21	22	
Kodakara	HW	-	-	-	-	-	-	-	-	7	2570	1	2237	-	-	8	2529	6	2695	2	2030	
	Local	-	-	-	-	-	-	-	-	15	2212	-	-	-	-	15	2212	14	2156	1	2984	
	Total	-	-	-	-	-	-	-	-	22	2325	1	2237	-	-	23	2275	20	2317	3	2348	
Mala	HW	-	-	-	-	-	-	-	-	4	2061	-	-	-	-	4	2061	2	1873	2	2246	
	Local	-	-	-	-	-	-	-	-	25	1939	1	563	-	-	26	1856	17	2509	9	710	
	Total	-	-	-	-	-	-	-	-	29	1956	1	563	-	-	30	1874	19	2442	11	990	
Vellangallur	HW	-	-	-	-	-	-	-	-	7	1988	-	-	-	-	7	1988	6	2019	1	1793	
	Local	-	-	-	-	-	-	-	-	16	1355	-	-	1	1753	17	1378	11	1527	6	1107	
	Total	-	-	-	-	-	-	-	-	23	1548	-	-	1	1753	24	1494	17	1701	7	1205	
Kodungallur	HW	-	-	-	-	-	-	-	-	-	-	-	-	-	-	-	-	-	-	-	-	
	Local	-	-	-	-	-	-	-	-	5	423	1	29	-	-	6	357	-	-	6	357	
	Total	-	-	-	-	-	-	-	-	5	423	1	29	-	-	6	357	-	-	6	357	
Mathilakom	HW	-	-	-	-	-	-	-	-	-	-	-	-	-	-	-	-	-	-	-	-	
	Local	-	-	-	-	-	-	-	-	3	722	7	383	8	778	18	678	2	11	16	762	
	Total	-	-	-	-	-	-	-	-	3	722	7	383	8	778	18	678	2	11	16	762	
Municipalities																						
Chavaghat																						
Chalakydy																						
Irinjalakuda																						
N.I.																						
Kodungallur	HW	-	-	-	-	-	-	-	-	-	-	-	-	-	-	-	-	-	-	-	-	
	Local	-	-	-	-	-	-	-	-	1	758	1	1263	8	1249	10	1201	-	-	10	1201	
	Total	-	-	-	-	-	-	-	-	1	758	1	1263	8	1249	10	1201	-	-	10	1201	
Thrissur District	HW	2	2375	-	-	-	-	2	2375	100	2365	7	1640	2	1218	109	2171	84	2391	27	2039	
	Local	7	2283	-	-	-	-	7	2283	237	2186	34	1399	28	892	299	1975	139	2007	167	1506	
	Total	9	2327	-	-	-	-	9	2327	337	2239	41	1440	30	914	408	2027	223	2152	194	1580	

(Contd.)

(Table 4 contd.)

	1	2	3	4	5	6	7	8	9	10	11	12	13	14	15	16	17	18	19	20	21	22	
Alathur	HWV	1	3175	-	-	-	-	-	1	3175	-	-	-	-	-	-	-	-	1	3175	-	-	
	Local	4	2999	-	-	-	-	-	4	2999	42	3154	-	-	-	-	42	3154	17	3352	29	3015	
	Total	5	3035	-	-	-	-	-	5	3035	42	3154	-	-	-	-	42	3154	18	3342	29	3015	
Kuzhalmanmam	HWV	1	4077	-	-	-	-	-	1	4077	4	3071	-	-	-	-	4	3071	2	4169	3	2676	
	Local	11	3064	-	-	-	-	-	11	3064	30	3042	1	762	1	837	32	2902	13	2830	30	2992	
	Total	12	3148	-	-	-	-	-	12	3148	34	3045	1	762	1	837	36	2912	15	3009	33	2963	
Palakkad	HWV	-	-	-	-	-	-	-	-	-	3	3244	-	-	-	-	3	3244	-	-	3	3244	
	Local	-	-	-	-	-	-	-	-	-	37	2827	-	-	-	2	3439	39	2859	8	2901	31	2848
	Total	-	-	-	-	-	-	-	-	-	40	2859	-	-	-	2	3439	42	2897	8	2901	34	2883
Kollencode	HWV	1	3017	-	-	-	-	-	1	3017	1	6537	-	-	-	-	1	6537	1	3017	1	6537	
	Local	18	3513	-	-	-	-	-	18	3513	27	3215	-	-	-	-	27	3215	19	4035	26	2821	
	Total	19	3487	-	-	-	-	-	19	3487	28	3332	-	-	-	-	28	3332	20	3984	27	2958	
Nermara	HWV	-	-	-	-	-	-	-	-	-	1	3664	-	-	-	-	1	3664	1	3664	-	-	
	Local	-	-	-	-	-	-	-	-	-	17	3520	-	-	-	-	17	3520	12	3793	5	2861	
	Total	-	-	-	-	-	-	-	-	-	18	3528	-	-	-	-	18	3528	13	3783	5	2861	
Chittur	HWV	-	-	-	-	-	-	-	-	-	-	-	-	-	-	-	-	-	-	-	-	-	
	Local	37	3752	-	-	-	-	1	2917	38	3675	5	2809	-	-	-	5	2809	20	3351	23	3859	
	Total	37	3752	-	-	-	-	1	2917	38	3675	5	2809	-	-	-	5	2809	20	3351	23	3859	
Manmarghat	HWV	1	984	-	-	-	-	-	1	984	6	3332	2	2080	-	-	8	3021	1	2399	8	2842	
	Local	-	-	-	-	-	-	-	-	-	30	2543	13	1832	-	-	43	2328	12	2282	31	2352	
	Total	1	984	-	-	-	-	-	1	984	36	2675	15	1865	-	-	51	2137	13	2291	39	2448	
Attappadi	HWV																						
	Local																						
	Total																						

Nil

(Contd.)

(Table 4 contd.)

1	2	3	4	5	6	7	8	9	10	11	12	13	14	15	16	17	18	19	20	21	22	
Sreekrishnapuram	HYV	-	-	-	-	-	-	-	-	4	3014	-	-	-	-	4	3014	2	3369	2	2660	
	Local	-	-	-	-	-	-	-	-	15	2015	13	1551	2	2712	30	1861	1	5298	29	1742	
	Total	-	-	-	-	-	-	-	-	19	2226	13	1551	2	2712	34	1968	3	4012	31	1801	
Pattambi	HYV	1	3161	-	-	-	-	1	3161	9	2580	-	-	3	1657	12	2349	3	2730	10	2316	
	Local	4	1674	-	-	-	-	4	1674	16	2012	2	1685	2	1688	20	1947	1	2514	23	1892	
	Total	5	2410	-	-	-	-	5	2410	25	2216	2	1685	5	1670	32	2041	4	2676	33	2020	
Ottapalam	HYV	-	-	-	-	-	-	-	-	10	2425	-	-	-	-	10	2425	2	2622	8	2375	
	Local	-	-	-	-	-	-	-	-	15	2157	9	2658	-	-	24	2346	2	1185	22	2450	
	Total	-	-	-	-	-	-	-	-	25	2264	9	2658	-	-	34	2360	4	1904	30	2430	
Thiruthala	HYV	1	1706	-	-	-	-	1	1706	1	3628	1	2550	-	-	2	3089	2	2667	1	2550	
	Local	3	2216	-	-	-	-	3	2216	9	1571	9	1169	3	2095	21	1473	5	2028	19	1445	
	Total	4	2089	-	-	-	-	4	2089	10	1776	10	1307	3	2095	23	1614	7	2211	20	1500	
<b>Municipalities</b>																						
Chittur-	HYV	1	1149	-	-	-	-	1	1149	-	-	-	-	-	-	-	-	6	3893	1	1149	
	Local	9	4023	-	-	-	-	9	4023	-	-	-	-	-	-	-	-	6	3893	3	4230	
	Total	10	3867	-	-	-	-	10	3867	-	-	-	-	-	-	-	-	6	3893	4	3498	
Palakkad	HYV	-	-	-	-	-	-	-	-	3	3800	-	-	-	-	3	3800	-	-	3	3800	
	Local	-	-	-	-	-	-	-	-	7	3459	-	-	-	-	7	3459	2	3768	5	3333	
	Total	-	-	-	-	-	-	-	-	10	3548	-	-	-	-	10	3548	2	3768	8	3508	
Shornur	HYV	-	-	-	-	-	-	-	-	1	1807	-	-	-	-	1	1807	-	-	1	1807	
	Local	-	-	-	-	-	-	-	-	6	1584	-	-	-	-	6	1584	-	-	6	1584	
	Total	-	-	-	-	-	-	-	-	7	1611	-	-	-	-	7	1611	-	-	7	1611	
Palakkad District	HYV	7	3695	-	-	-	-	7	3695	43	4088	3	2237	3	1657	49	3826	15	3073	41	2718	
	Local	86	3507	-	-	-	1	2917	87	3513	256	3984	47	1756	10	2280	313	2715	118	3261	282	2585
	Total	93	3521	-	-	-	1	2917	94	3527	299	3999	50	1785	13	2136	362	3626	133	3240	323	2602

(Contd.)



(Table 4 contd.)

1	2	3	4	5	6	7	8	9	10	11	12	13	14	15	16	17	18	19	20	21	22
Malappuram	HWV	-	-	-	-	-	-	-	-	9	2286	1 1105	-	-	-	10	2167	6	2096	4	2276
	Local	-	-	-	-	-	-	-	-	28	2215	5 1395	2	2211	2	26	2033	8	2061	18	2020
	Total	-	-	-	-	-	-	-	-	28	2215	6 1347	2	2211	2	36	2065	14	2076	22	2067
Manjeri	HWV	-	-	-	-	-	-	-	-	3	2827	-	-	-	-	3	2827	3	2827	-	-
	Local	-	-	-	-	-	-	-	-	13	1987	11 1360	2	2011	2	26	1725	9	1684	17	1745
	Total	-	-	-	-	-	-	-	-	16	2145	11 1360	2	2011	2	29	1892	12	1970	17	1745
Kondotty	HWV	-	-	-	-	-	-	-	-	10	2267	2 1595	-	-	-	12	2156	6	2577	6	1733
	Local	-	-	-	-	-	-	-	-	11	1584	18 1420	1	1522	1	30	1482	8	1592	22	1444
	Total	-	-	-	-	-	-	-	-	21	1909	20 1437	1	1522	1	42	1665	14	2014	28	1606
Vandoor	HWV	-	-	-	-	-	-	-	-	4	2507	-	-	1	1884	5	2381	2	2492	3	2310
	Local	-	-	-	-	-	-	-	-	39	2264	4 1491	-	-	-	43	1877	16	2075	27	1758
	Total	-	-	-	-	-	-	-	-	33	2568	4 1491	1	1884	1	48	1951	18	2121	30	1813
Nilambur	HWV	-	-	-	-	-	-	-	-	11	3247	-	-	-	-	11	3247	8	3115	3	3606
	Local	-	-	-	-	-	-	-	-	13	2229	-	-	-	-	13	2229	9	2389	4	1871
	Total	-	-	-	-	-	-	-	-	24	2593	-	-	-	-	24	2593	17	2730	7	2614
Andathode	HWV	-	-	-	-	-	-	-	-	-	-	-	-	-	-	-	-	-	-	-	-
	Local	-	-	-	-	-	-	-	-	25	2176	5 2211	-	-	-	30	2182	26	2126	4	2473
	Total	-	-	-	-	-	-	-	-	25	2176	5 2211	-	-	-	30	2182	26	2136	4	2473
Ponnani	HWV	-	-	-	-	-	-	-	-	2	2790	-	-	-	-	2	2790	2	2790	-	-
	Local	-	-	-	-	-	-	-	-	17	1933	4 1108	1	2283	1	22	1789	6	2357	16	1589
	Total	-	-	-	-	-	-	-	-	19	2023	4 1108	1	2283	1	24	1872	8	2466	16	1589
Perinthalmanna	HWV	-	-	-	-	-	-	-	-	9	2398	5 2319	-	-	-	14	2370	5	2417	9	2313
	Local	-	-	-	-	-	-	-	-	12	1960	15 1955	-	-	-	27	1957	8	963	19	2377
	Total	-	-	-	-	-	-	-	-	21	2038	20 2046	-	-	-	41	2042	13	1545	28	2356

(Contd.)

(Table 4 contd.)

1	2	3	4	5	6	7	8	9	10	11	12	13	14	15	16	17	18	19	20	21	22
Mankada	HWV	1	3443	-	-	-	-	1	3443	6	3664	1	1848	-	-	7	3403	5	3955	3	2501
	Local	3	1065	-	-	-	-	3	1065	10	2192	9	2153	-	-	19	2174	8	2502	14	1749
	Total	4	1661	-	-	-	-	4	1661	16	2744	10	2123	-	-	26	2505	13	3061	17	1881
Thirurangadi	HWV	-	-	-	-	-	-	-	-	4	2225	-	-	-	-	4	2225	3	2197	1	2301
	Local	-	-	-	-	-	-	-	-	22	1663	3	1069	1	272	26	1287	10	1440	16	1191
	Total	-	-	-	-	-	-	-	-	26	1495	3	1069	1	272	30	1408	13	1615	17	1256
Vengara	HWV	-	-	-	-	-	-	-	-	4	3146	-	-	-	-	4	3146	2	2090	2	2502
	Local	-	-	-	-	-	-	-	-	18	1668	9	1653	5	1910	22	1703	5	323	27	1957
	Total	-	-	-	-	-	-	-	-	22	1937	9	1653	5	1910	36	1824	7	1313	29	1995
Thirur	HWV	-	-	-	-	-	-	-	-	3	2120	-	-	-	-	3	2120	2	1741	1	2881
	Local	-	-	-	-	-	-	-	-	21	1658	5	1130	-	-	26	1555	14	1704	12	1384
	Total	-	-	-	-	-	-	-	-	24	1716	5	1130	-	-	29	1604	16	1708	13	1499
Kuttiapuram	HWV	-	-	-	-	-	-	-	-	4	2508	-	-	-	-	4	2508	1	2377	3	2550
	Local	-	-	-	-	-	-	-	-	18	1949	6	1168	1	1631	25	1747	5	2638	20	1526
	Total	-	-	-	-	-	-	-	-	22	2050	6	1168	1	1631	29	1843	6	2595	23	1659
Tamar	HWV	1	2595	-	-	-	-	1	2595	2	1402	-	-	-	-	2	1402	2	2024	1	1352
	Local	-	-	-	-	-	-	-	-	19	1363	7	1089	-	-	26	1290	1	1602	25	1277
	Total	1	2595	-	-	-	-	1	2595	21	1367	7	1089	-	-	28	1297	3	1885	26	1280
<b>Municipalities</b>																					
Manjeri	HWV	-	-	-	-	-	-	-	-	4	2479	-	-	-	-	4	2479	1	2627	3	2428
	Local	1	2330	-	-	-	-	1	2330	5	2330	-	-	-	-	5	2330	5	2312	1	2356
	Total	1	2330	-	-	-	-	1	2330	9	2369	-	-	-	-	9	2369	6	2365	4	2410
Malappuram	HWV	2	2787	-	-	-	-	2	2787	8	2993	-	-	-	-	8	2993	9	3025	1	2301
	Local	-	-	-	-	-	-	-	-	-	-	-	-	-	-	-	-	-	-	-	-
	Total	2	2787	-	-	-	-	2	2787	8	2993	-	-	-	-	8	2993	9	3025	1	2301

(Contd.)

(Table 4 contd.)

	1	2	3	4	5	6	7	8	9	10	11	12	13	14	15	16	17	18	19	20	21	22
Thrur	HVV	-	-	-	-	-	-	-	-	-	-	-	-	-	-	-	-	-	-	-	-	-
	Local	-	-	-	-	-	-	-	-	-	6	1557	4	1119	-	-	10	1381	1	2087	9	1309
	Total	-	-	-	-	-	-	-	-	-	6	1557	4	1119	-	-	10	1381	1	2087	9	1309
Malappuram Dist.	HVV	4	3070	-	-	-	-	-	4	3070	83	2768	9	1971	1	1884	93	2682	57	2774	40	2358
	Local	4	1344	-	-	-	-	-	4	1344	268	1858	105	1528	13	1823	386	1837	139	1905	251	1684
	Total	8	2135	-	-	-	-	-	8	2135	351	2073	114	1563	14	1828	479	1927	196	2157	291	1777
Balussery	HVV	-	-	-	-	-	-	-	6	1548	8	1184	10	750	2	526	20	902	1	958	19	899
	Local	-	-	-	-	-	-	-	8	1184	14	1340	11	821	2	526	27	928	7	1464	20	930
	Total	-	-	-	-	-	-	-	14	1340	22	2526	21	1571	4	1052	47	1830	8	2422	39	1829
Perambra	HVV	-	-	-	-	-	-	-	8	1383	12	1352	-	-	3	1613	15	1404	3	1984	5	1021
	Local	-	-	-	-	-	-	-	20	1364	7	945	-	-	3	1613	16	836	4	940	12	800
	Total	-	-	-	-	-	-	-	28	2728	19	2300	-	-	6	3226	31	2240	7	2924	17	1821
Meladi	HVV	-	-	-	-	-	-	-	6	805	7	945	6	812	3	626	6	805	1	568	5	851
	Local	-	-	-	-	-	-	-	13	880	6	812	6	812	3	626	16	836	4	940	12	800
	Total	-	-	-	-	-	-	-	19	1765	13	1757	12	1624	6	1252	22	1641	5	1508	17	1651
Panthaleypini	HVV	-	-	-	-	-	-	-	4	709	4	709	8	686	2	406	14	652	-	-	14	652
	Local	-	-	-	-	-	-	-	4	709	8	686	8	686	2	406	14	652	-	-	14	652
	Total	-	-	-	-	-	-	-	8	1418	12	1395	16	1372	4	812	28	1304	-	-	28	1304
Kozhikode	HVV	-	-	-	-	-	-	-	8	2242	9	1386	1	836	2	906	13	1244	2	2160	20	835
	Local	-	-	-	-	-	-	-	17	1789	2	941	3	906	2	906	22	1539	2	2160	20	843
	Total	-	-	-	-	-	-	-	25	4031	11	2327	4	1742	4	1812	35	2783	4	4320	40	1678
Cholannur	HVV	-	-	-	-	-	-	-	2	2160	10	908	7	720	3	913	20	843	2	2160	20	843
	Local	-	-	-	-	-	-	-	12	1116	7	720	7	720	3	913	22	933	2	2160	20	843
	Total	-	-	-	-	-	-	-	14	3276	17	1828	14	1440	6	1826	42	1776	4	4320	40	1686

(Contd.)

(Table 4 contd.)

	1	2	3	4	5	6	7	8	9	10	11	12	13	14	15	16	17	18	19	20	21	22
Koduvally	HVV	-	-	-	-	-	-	-	-	-	-	-	-	-	-	-	-	-	-	-	-	-
	Local	-	-	-	-	-	-	-	-	-	-	-	-	-	-	-	-	-	-	-	-	-
	Total	-	-	-	-	-	-	-	-	-	-	-	-	-	-	-	-	-	-	-	-	-
Kumamangalam	HVV	-	-	-	-	-	-	-	-	-	-	-	-	-	-	-	-	-	-	-	-	-
	Local	-	-	-	-	-	-	-	-	-	-	-	-	-	-	-	-	-	-	-	-	-
	Total	-	-	-	-	-	-	-	-	-	-	-	-	-	-	-	-	-	-	-	-	-
Badagara	HVV	-	-	-	-	-	-	-	-	-	-	-	-	-	-	-	-	-	-	-	-	-
	Local	-	-	-	-	-	-	-	-	-	-	-	-	-	-	-	-	-	-	-	-	-
	Total	-	-	-	-	-	-	-	-	-	-	-	-	-	-	-	-	-	-	-	-	-
Thuneri	HVV	-	-	-	-	-	-	-	-	-	-	-	-	-	-	-	-	-	-	-	-	-
	Local	-	-	-	-	-	-	-	-	-	-	-	-	-	-	-	-	-	-	-	-	-
	Total	-	-	-	-	-	-	-	-	-	-	-	-	-	-	-	-	-	-	-	-	-
Kunnammel	HVV	-	-	-	-	-	-	-	-	-	-	-	-	-	-	-	-	-	-	-	-	-
	Local	-	-	-	-	-	-	-	-	-	-	-	-	-	-	-	-	-	-	-	-	-
	Total	-	-	-	-	-	-	-	-	-	-	-	-	-	-	-	-	-	-	-	-	-
Thodannur	HVV	-	-	-	-	-	-	-	-	-	-	-	-	-	-	-	-	-	-	-	-	-
	Local	-	-	-	-	-	-	-	-	-	-	-	-	-	-	-	-	-	-	-	-	-
	Total	-	-	-	-	-	-	-	-	-	-	-	-	-	-	-	-	-	-	-	-	-
Corporation of Calicut	HVV	-	-	-	-	-	-	-	-	-	-	-	-	-	-	-	-	-	-	-	-	-
	Local	-	-	-	-	-	-	-	-	-	-	-	-	-	-	-	-	-	-	-	-	-
	Total	-	-	-	-	-	-	-	-	-	-	-	-	-	-	-	-	-	-	-	-	-
										1	7	8	2	1	1	1	2	1	1	1	2	11
										976	1241	208	139	784	462	1219	557	1188	1136	557	1188	1136
										1	7	8	2	1	1	1	2	1	1	1	2	11
										976	1241	208	139	784	462	1219	557	1188	1136	557	1188	1136

(Contd.)

(Table 4 contd.)

	1	2	3	4	5	6	7	8	9	10	11	12	13	14	15	16	17	18	19	20	21	22
<b>Municipalities</b>																						
<b>Badagara</b>																						
HVV	-	-	-	-	-	-	-	-	-	-	1	1847	1	857	-	-	2	1352	1	1847	1	857
Local	-	-	-	-	-	-	-	-	-	-	2	1471	2	751	-	-	4	1111	-	-	4	1111
Total	-	-	-	-	-	-	-	-	-	-	3	1596	3	786	-	-	6	1305	1	1847	5	1060
<b>Kozhikode District</b>																						
HVV	-	-	-	-	-	-	-	-	-	-	66	2093	8	1172	6	934	80	1914	32	1876	48	1564
Local	-	-	-	-	-	-	-	-	-	-	120	1259	69	850	25	794	214	1096	24	1027	190	1078
Total	-	-	-	-	-	-	-	-	-	-	186	1458	77	883	31	821	294	1276	56	1512	238	1176
<b>Kalpeta</b>																						
HVV	-	-	-	-	-	-	-	-	-	-	1	381	1	381	1	381	2	762	-	-	3	1143
<b>Mananthody</b>																						
HVV	-	-	-	-	-	-	-	-	-	-	1	381	1	381	1	381	2	762	-	-	3	1143
<b>Sultanbattary</b>																						
HVV	-	-	-	-	-	-	-	-	-	-	1	381	1	381	1	381	2	762	-	-	3	1143
<b>Weyanad Dist.</b>																						
HVV	-	-	-	-	-	-	-	-	-	-	1	381	1	381	1	381	2	762	-	-	3	1143
<b>Kuthuparaba</b>																						
HVV	-	-	-	-	-	-	-	-	-	-	16	2612	1	2880	-	-	17	2628	1	2645	16	2612
Local	-	-	-	-	-	-	-	-	-	-	19	1969	6	1532	-	-	25	1864	-	-	25	1864
Total	-	-	-	-	-	-	-	-	-	-	35	2263	7	1725	-	-	42	2223	1	2645	41	2162
<b>Paravoor</b>																						
HVV	-	-	-	-	-	-	-	-	-	-	26	2517	-	-	4	2394	30	2501	14	2704	16	2323
Local	-	-	-	-	-	-	-	-	-	-	8	1618	9	1303	-	-	17	1452	1	1080	16	1474
Total	-	-	-	-	-	-	-	-	-	-	34	2305	9	1303	4	2394	47	1913	15	2596	32	1898
<b>Iritty</b>																						
HVV	-	-	-	-	-	-	-	-	-	-	25	2210	2	3101	-	-	27	2283	4	2169	23	2305
Local	-	-	-	-	-	-	-	-	-	-	15	1762	11	1670	1	920	27	1694	-	-	27	1693
Total	-	-	-	-	-	-	-	-	-	-	40	2048	13	1890	1	920	54	1957	4	2169	50	1974
<b>Tellicherry</b>																						
HVV	-	-	-	-	-	-	-	-	-	-	9	2098	1	2454	1	2835	11	2198	-	-	11	2198
Local	-	-	-	-	-	-	-	-	-	-	9	1679	2	872	2	1408	13	1513	-	-	11	1513
Total	-	-	-	-	-	-	-	-	-	-	18	1888	3	1400	3	1883	24	1793	-	-	24	1793

(Contd.)

(Table 4 contd.)

	1	2	3	4	5	6	7	8	9	10	11	12	13	14	15	16	17	18	19	20	21	22
Cannur	HVV	-	-	-	-	-	-	-	-	-	4	2804	1	2324	-	-	5	2709	2	2837	3	2622
	Local	-	-	-	-	-	-	-	-	-	3	3767	4	2256	-	-	7	2904	2	4241	3	2369
	Total	-	-	-	-	-	-	-	-	-	7	3217	5	2270	-	-	12	2805	4	3539	8	2464
Bakked	HVV	-	-	-	-	-	-	-	-	-	18	3159	-	-	-	-	18	3159	-	-	18	3159
	Local	-	-	-	-	-	-	-	-	-	14	2656	4	2237	-	-	18	2563	-	-	18	2563
	Total	-	-	-	-	-	-	-	-	-	32	2938	4	2237	-	-	36	2887	-	-	36	2887
Thepparamba	HVV	3	2638	-	-	-	-	-	3	2638	31	2992	-	-	-	-	31	2992	12	3348	22	2744
	Local	1	2184	-	-	-	-	-	1	2184	22	2170	9	2093	-	-	31	2147	5	449	27	2460
	Total	4	2457	-	-	-	-	-	4	2457	53	2651	9	2093	-	-	62	2570	17	2495	49	2587
Payannur	HVV	-	-	-	-	-	-	-	-	-	21	2954	11	2797	-	-	32	2897	4	3210	28	2852
	Local	-	-	-	-	-	-	-	-	-	16	2367	25	2044	-	-	41	2171	1	3136	40	2147
	Total	-	-	-	-	-	-	-	-	-	37	2700	36	2271	-	-	73	2451	5	3189	68	2437
Irikkur	HVV	-	-	-	-	-	-	-	-	-	20	2329	2	2493	-	-	22	2945	6	1895	16	2512
	Local	-	-	-	-	-	-	-	-	-	16	2228	16	2092	-	-	32	2161	3	2141	29	2162
	Total	-	-	-	-	-	-	-	-	-	36	2284	18	2137	-	-	54	2234	9	1977	45	2286
Municipalities	HVV	-	-	-	-	-	-	-	-	-	6	1556	-	-	-	-	6	1556	-	-	6	1556
	Local	-	-	-	-	-	-	-	-	-	10	1881	1	1244	-	-	10	1881	10	1881	12	1881
	Total	-	-	-	-	-	-	-	-	-	16	2228	1	1244	-	-	16	2228	10	1881	18	2228
Tellicherry	HVV	-	-	-	-	-	-	-	-	-	10	1881	-	-	-	-	10	1881	10	1881	10	1881
	Local	-	-	-	-	-	-	-	-	-	21	1167	-	-	-	-	21	1167	-	-	21	1167
	Total	-	-	-	-	-	-	-	-	-	31	1881	-	-	-	-	31	1881	10	1881	31	1881
Corporation of Calicut	HVV	-	-	-	-	-	-	-	-	-	1	976	1	139	-	-	2	57	-	-	2	57
	Local	-	-	-	-	-	-	-	-	-	7	1241	1	784	-	-	9	1188	-	-	9	1188
	Total	-	-	-	-	-	-	-	-	-	8	208	2	462	-	-	11	1136	-	-	11	1136
Cannur District	HVV	3	2638	-	-	-	-	-	3	2638	180	2757	18	2750	5	2482	203	2750	53	2604	153	2624
	Local	1	2184	-	-	-	-	-	1	2184	122	2145	86	1888	3	1245	211	2075	12	1778	200	2043
	Total	4	2457	-	-	-	-	-	4	2457	302	2510	104	2038	8	2018	414	2354	65	2452	353	2295

(Contd.)

(Table 4 contd.)

	1	2	3	4	5	6	7	8	9	10	11	12	13	14	15	16	17	18	19	20	21	22
Kasaragod	HWV	-	-	-	-	-	-	-	-	-	24	3613	-	-	-	-	24	3613	10	4034	14	2430
	Local	-	-	-	-	-	-	-	-	-	42	2545	-	-	-	-	42	2545	11	2721	31	2511
	Total	-	-	-	-	-	-	-	-	-	66	2817	-	-	-	-	66	2817	21	3346	45	2486
Neelേശ്വര	HWV	-	-	-	-	-	-	-	-	-	23	2835	1	3415	-	-	24	3079	9	2431	15	3390
	Local	-	-	-	-	-	-	-	-	-	20	2639	20	1922	2	2125	42	2273	-	-	42	2222
	Total	-	-	-	-	-	-	-	-	-	43	2455	21	1979	2	2125	66	2390	9	2431	57	2529
Mun. Jeswar	HWV	-	-	-	-	-	-	-	-	-	6	3669	-	-	-	-	6	3669	4	3837	2	3331
	Local	-	-	-	-	-	-	-	-	-	42	2655	6	3512	-	-	48	2762	25	2798	23	2724
	Total	-	-	-	-	-	-	-	-	-	48	2782	6	3512	-	-	54	2932	29	2941	25	2772
Kasaragod	HWV	-	-	-	-	-	-	-	-	-	30	3646	-	-	-	-	20	3646	7	3902	13	3506
	Local	-	-	-	-	-	-	-	-	-	54	2566	2	1661	-	-	56	2554	8	2768	48	2495
	Total	-	-	-	-	-	-	-	-	-	84	2858	2	1661	-	-	76	2829	15	3297	61	3242
Municipalities	HWV	-	-	-	-	-	-	-	-	-	-	-	-	-	-	-	-	-	-	-	-	-
	Local	-	-	-	-	-	-	-	-	-	-	-	-	-	-	-	-	-	-	-	-	-
	Total	-	-	-	-	-	-	-	-	-	-	-	-	-	-	-	-	-	-	-	-	-
Kasaragod	HWV	-	-	-	-	-	-	-	-	-	-	-	-	-	-	-	-	-	-	-	-	-
	Local	-	-	-	-	-	-	-	-	-	-	-	-	-	-	-	-	-	-	-	-	-
	Total	-	-	-	-	-	-	-	-	-	-	-	-	-	-	-	-	-	-	-	-	-
Kannhangad	HWV	-	-	-	-	-	-	-	-	-	1	3433	-	-	-	-	1	3433	-	-	1	3433
	Local	-	-	-	-	-	-	-	-	-	9	2792	-	-	-	-	9	2792	-	-	9	2792
	Total	-	-	-	-	-	-	-	-	-	10	2812	-	-	-	-	10	2812	-	-	10	2812
Kasaragode District	HWV	-	-	-	-	-	-	-	-	-	74	3417	1	3415	-	-	75	3417	30	3566	45	3123
	Local	-	-	-	-	-	-	-	-	-	167	2598	28	2374	2	2125	197	2561	44	2773	153	2475
	Total	-	-	-	-	-	-	-	-	-	241	2745	29	2410	2	2125	272	2704	74	3094	198	2622
KERALA STATE	HWV	117	2698	2	1807	1	1297	120	2933	1296	2801	55	1963	22	1635	1373	2749	892	2630	601	2508	
	Local	300	2761	-	-	4	2589	304	3011	1916	2594	427	1518	129	1444	2472	2348	1024	2416	1752	1937	
	Total	417	2743	2	1807	5	2327	424	2989	3212	2678	482	1569	151	1472	3845	2531	1916	2516	2353	2083	

Typed by K. Ravendran, U.D. Typist.

Printed at DES Offset Press, Tvm.







